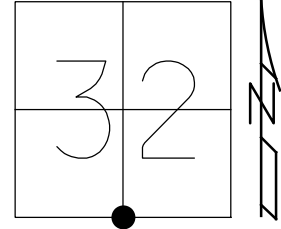


O.D.O.T. DISTRICT 2 SURVEY OFFICE (USE ONLY)

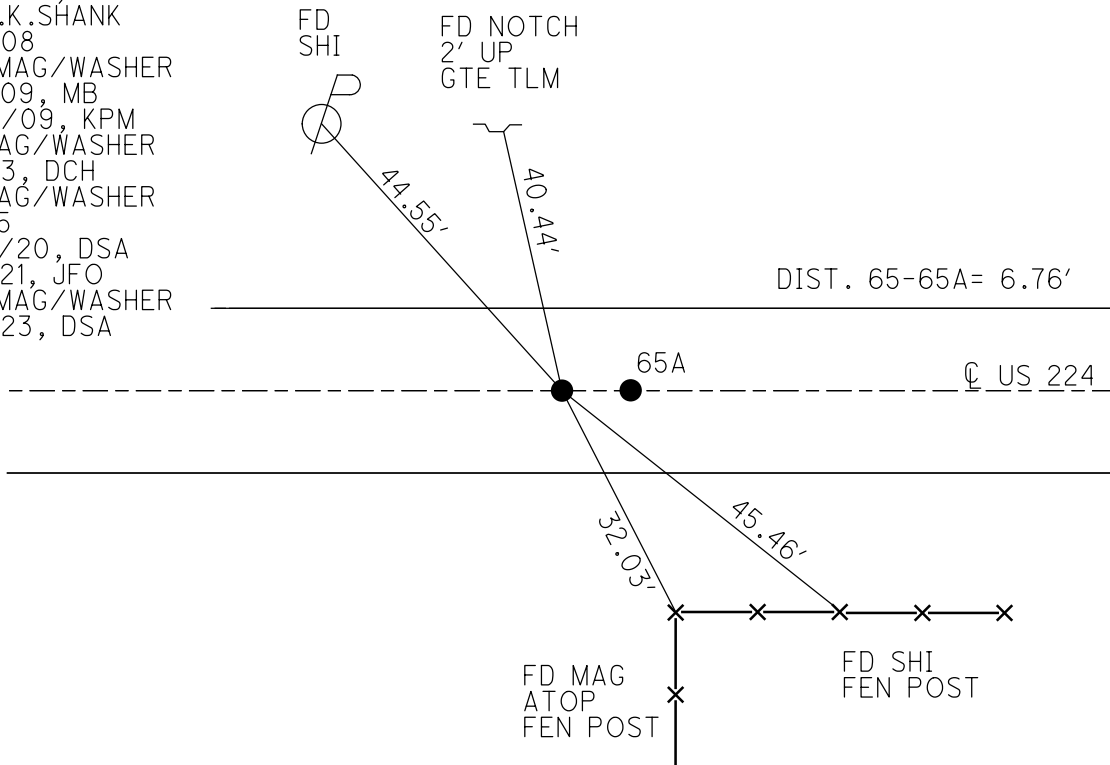
PERSONNEL _____ REFERENCE NO. 65 SHEET 6 OF 37
 NOTES RHOADES DATE 11/7/23 ROUTE US 224
 H.C. AUBLE WEATHER CLOUDY COUNTY SENECA
 R.C. ASTON TEMP. 54° TOWNSHIP SCIPIO
 NIESE SECTION 32
 DWG BY RHOADES PID 101217 T 2 N R 16 E

TYPE MONUMENT MAG/WASHER
 ON SURFACE - ~~BELOW~~ ON
 OFFSET 0.6' LT : RT
10.8' TO RT EDGE PAVEMENT
 STATION: 1079+31.77



HORZ.DATUM: NAD83 2011 GEOID: NAVD88 2018
 GRID: NORTHING: 515731.314 EASTING: 1818519.011

RECORD: P.I.
 STA. 1129+47.48
 FD BOAT SPIKE/WASHER
 ATOP P.K.NAIL
 SET P.K./WASHER
 10/28/82
 FD P.K./WASHER
 6/30/92, JLR
 SET P.K./WASHER
 11/30/92, JLR
 FD P.K.SHANK
 1/17/08
 SET MAG/WASHER
 8/3/09, MB
 10/14/09, KPM
 FD MAG/WASHER
 2/1/13, DCH
 FD MAG/WASHER
 REF65
 8/24/20, DSA
 3/7/21, JFO
 SET MAG/WASHER
 11/7/23, DSA



O.D.O.T. DISTRICT 2 SURVEY OFFICE (USE ONLY)

PERSONNEL _____

REFERENCE NO. 65

SHEET 5 OF 33

NOTES RHOADES DATE 3/17/21

H.C. O'DONNELL WEATHER FAIR

R.C. _____ TEMP. 45°

ROUTE US 224

COUNTY SENECA

TOWNSHIP SCIPIO

SECTION 32

DWG BY NIESE PID PAVE TRAIN

T 2 N R 16 E

TYPE MONUMENT MAG/WASHER

ON SURFACE - ~~BELOW~~ ON

OFFSET C PAVEMENT 0.6' ~~RT~~ : RT

10.8' TO RT EDGE PAVEMENT

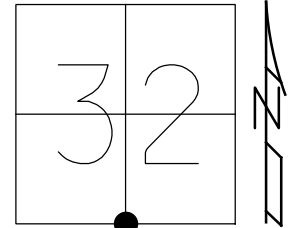
STATION: 1079+31.77

HORIZ.DATUM: NAD83 2011

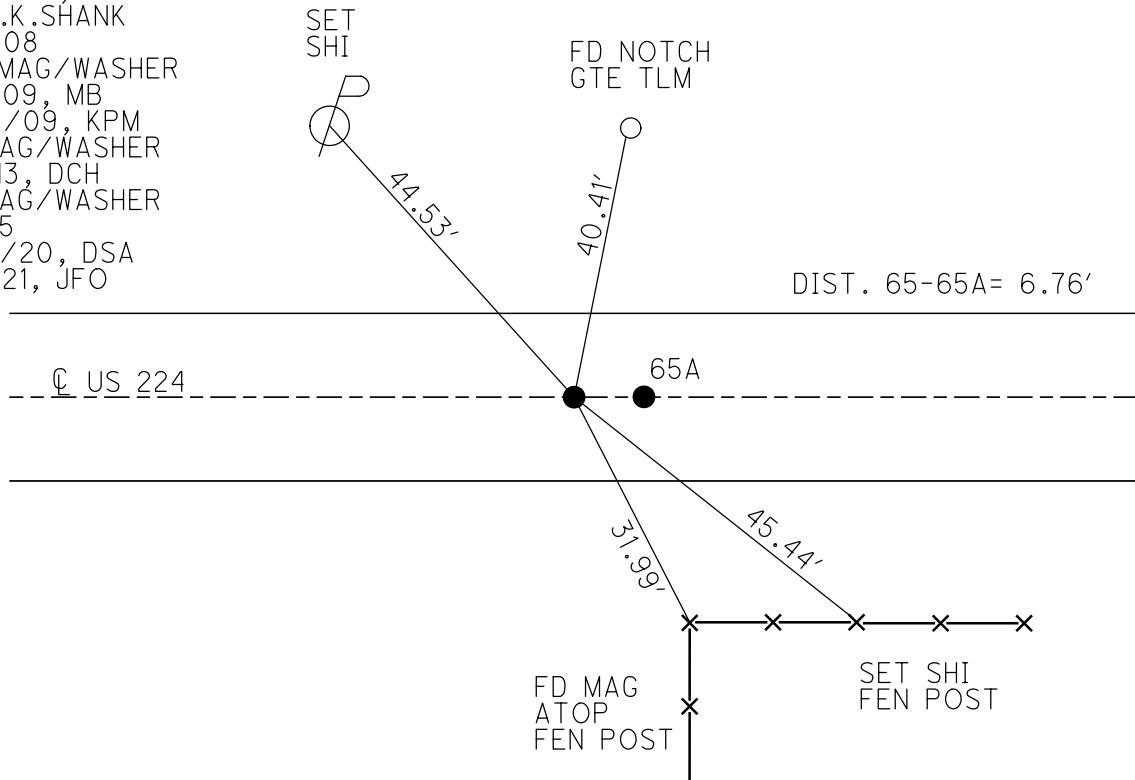
GEOID: NAVD88 2012A

GRID: NORTHING: 515731.348

EASTING: 1818518.940



RECORD: P.I.
 STA. 1129+47.48
 FD BOAT SPIKE/WASHER
 ATOP P.K.NAIL
 SET P.K./WASHER
 10/28/82
 FD P.K./WASHER
 6/30/92, JLR
 SET P.K./WASHER
 11/30/92, JLR
 FD P.K.SHANK
 1/17/08
 SET MAG/WASHER
 8/3/09, MB
 10/14/09, KPM
 FD MAG/WASHER
 2/1/13, DCH
 FD MAG/WASHER
 REF65
 8/24/20, DSA
 3/7/21, JFO



O.D.O.T. DISTRICT 2 SURVEY OFFICE

PERSONNEL

REFERENCE NO. 65

SHEET 5 OF 35

NOTES MOSER
 H.C. MOSER
 R.C. PIETKOWSKI
 GOLDBERG

DATE 8-4-09
 WEATHER FAIR
 TEMP. +40°

ROUTE U.S. 224
 COUNTY SENECA
 TOWNSHIP SCIPIO
 SECTION 32
 T 2 N R 16 E

TYPE MONUMENT MAG./WASHER

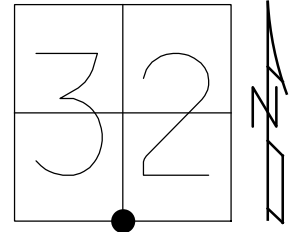
ON SURFACE - ~~BELOW~~ ON

LEFT - PAV'T - RIGHT ON

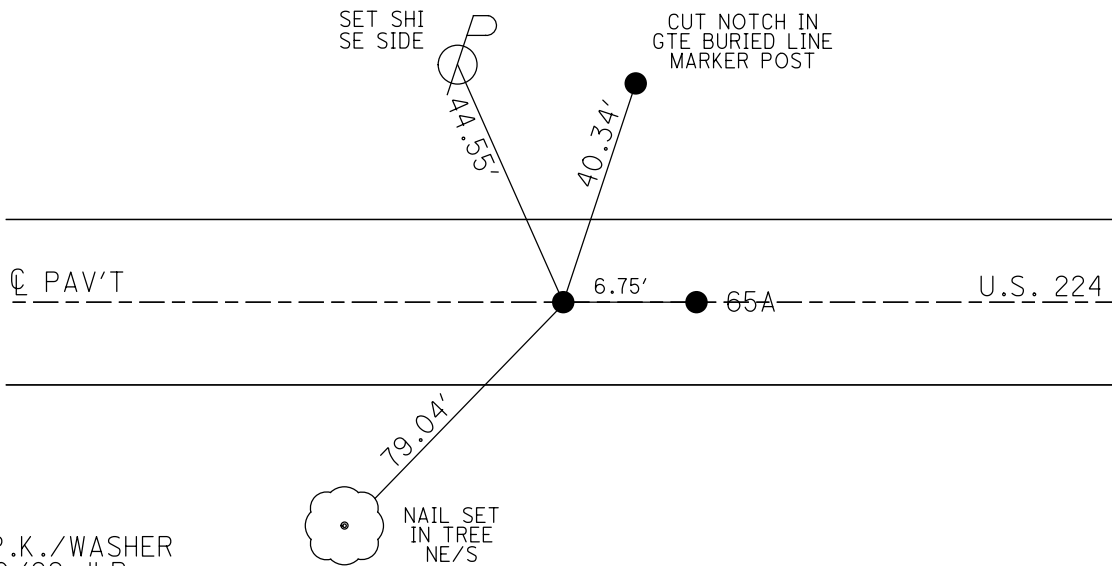
10.8' TO RT EDGE PAVEMENT

S.L.M. 1079+31.77

GRID: NORTHING: 515731.348 EASTING: 1818518.940



RECORD: 10-28-52
 PI STA 1129+4748
 SET PK&WASHER ATOP
 BOAT SPK&WASHER ATOP PK
 HUB FIELD BOOK #54(FROM LOFT).



FD P.K./WASHER
 6/30/92 JLR

SET P.K./WASHER
 11/30/92 JLR

FD SHANK
 1/17/08

SET MAG/WASHER
 8/3/09 MB

RESET MAG/WASHER
 10/14/09 KPM

FD MAG/WASHER
 1/15/13, SDC
 GPS, REF65
 2/1/13, DCH

O.D.O.T. DISTRICT 2 SURVEY OFFICE

PERSONNEL

REFERENCE NO. 65

SHEET 5 OF 35

NOTES Moser

DATE 8-4-09

ROUTE U.S. 224

H.C. Moser

WEATHER Fair

COUNTY SENECA

R.C. Pietkowski

TEMP. +40°

TOWNSHIP SCIPIO

Goldberg

SECTION 32

T. 2 N R. 16 E

TYPE MONUMENT MAG./WASHER

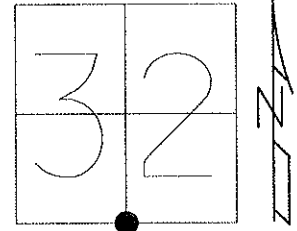
ON SURFACE - ~~BELOW~~ ON

LEFT - ☉ PAV'T - RIGHT ON

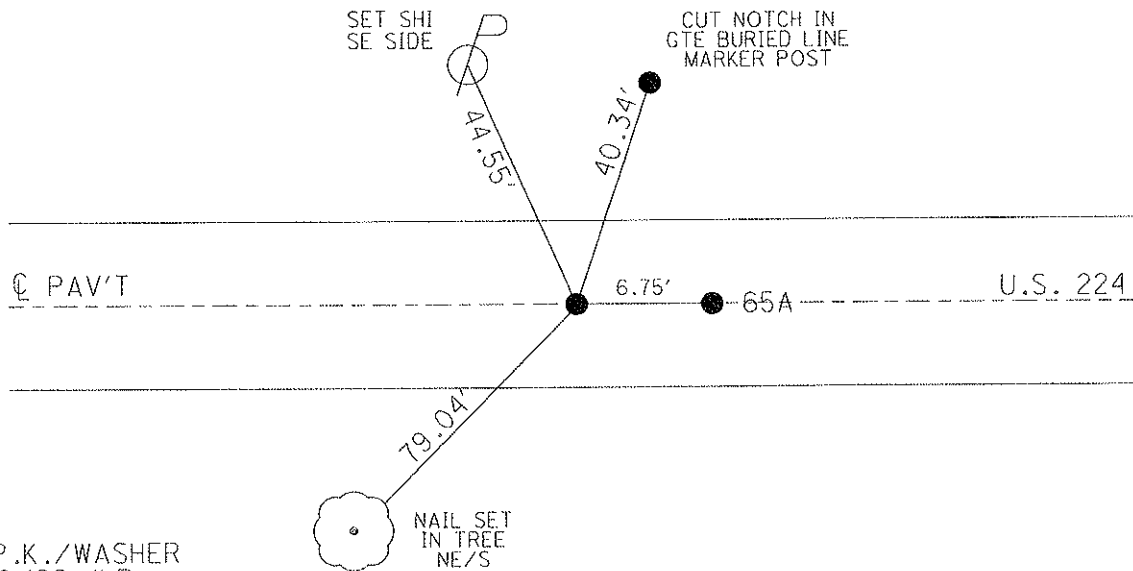
10.8' TO RT EDGE PAVEMENT

S.L.M. 1079 + 05.12

Grid: Northing: 515731.348 Easting: 1818518.977



RECORD: 10-28-52
 PI STA 1129+4748
 SET PK&WASHER ATOP
 BOAT SPK&WASHER ATOP PK
 HUB FIELD BOOK #54(FROM LOFT).



FD P.K./WASHER
 6/30/92 JLR

SET P.K./WASHER
 11/30/92 JLR

FD SHANK
 1/17/08

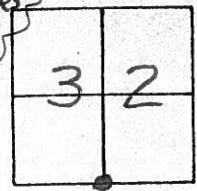
SET MAG/WASHER
 8/3/09 MB

RESET MAG/WASHER
 10/14/09 KPM

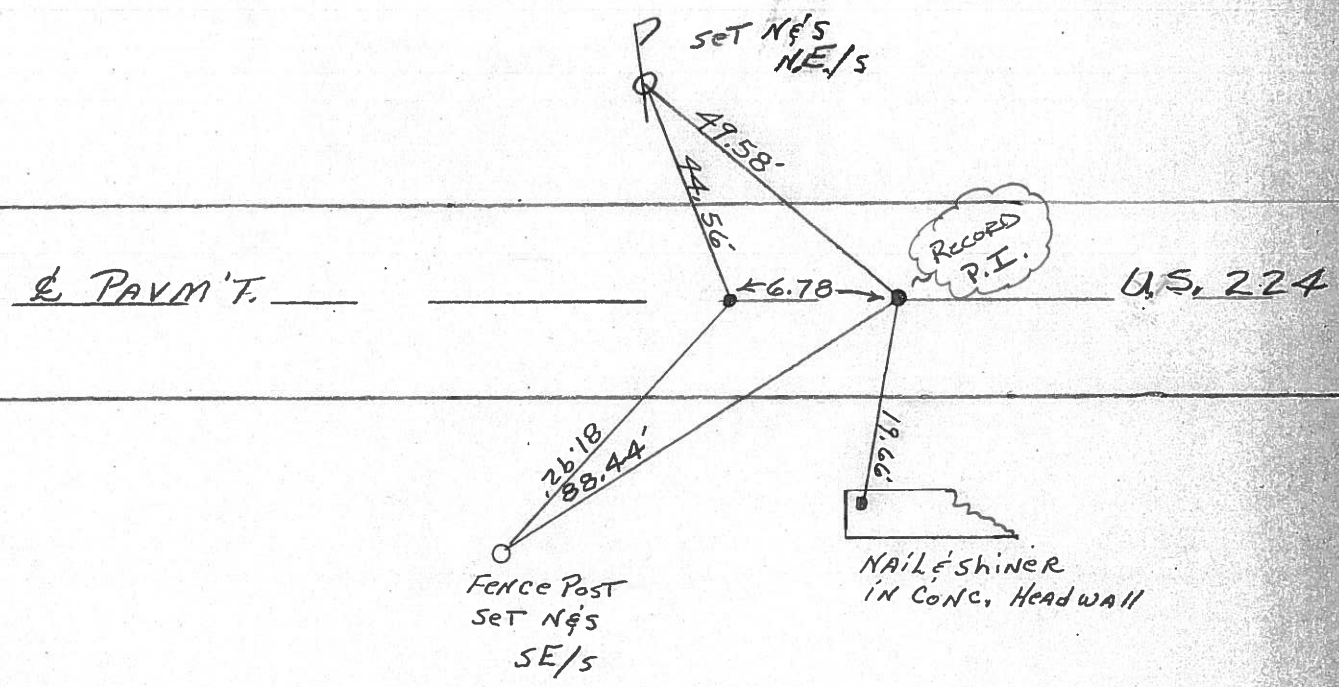
O.D.O.T. DISTRICT 2 SURVEY OFFICE

PERSONNEL _____ REFERENCE NO. 65 SHEET 4 OF 32
 NOTES Cheney
 H.C. RIPPLE DATE 10-30-92 ROUTE U.S. 224
 R.C. BARBOUR WEATHER Cloudy COUNTY Seneca
Geyman TEMP. 55° TOWNSHIP Scipio
 SECTION 32
 T. 2 N. R 16. E

TYPE MONUMENT ⁶⁻³⁰⁻⁹² F.d. P.K. & Washers ^{set P.K. & Washers 11-30-92 J.L.R.}
 ON SURFACE - BELOW yes
~~LEFT~~ C PAV'T. - ~~RIGHT~~ yes
10' TO RT. EDGE PAVEMENT
 S.L.M. 1078+60



Record: 10-28-52
P.I. STA. 1129+4748
set P.K. & washer at top
boat spike & washer at top P.K.
Hub Field Book #54 (from left)



County Seneca S.R. 224

Township Scipio

Section 32

T2N, R16E

Personnel Cronin

Ripple

Geyman

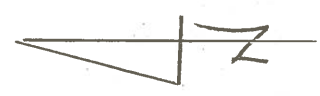
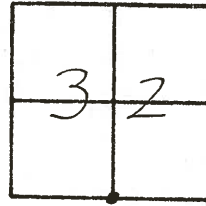
Mosser

Barbour

Date 10/28/52 Drawn 11/02/82

Weather sunny

Temp. 55°



65

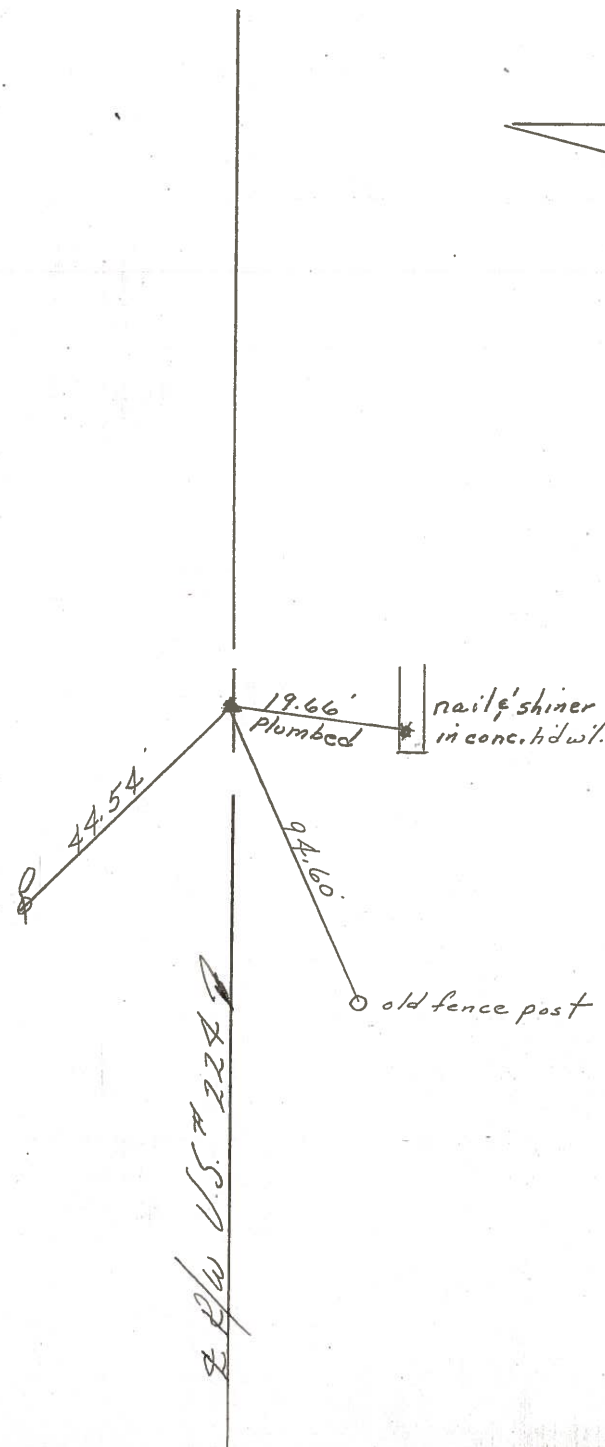
P.I.

129 + 47.48

set P.K. & washer a top boat

dike & washer a top P.K.

Job-Field Book #54 from left



PERSONNEL TITLE PERSONNEL TITLE

COUNTY Seneca DATE 3-25-68

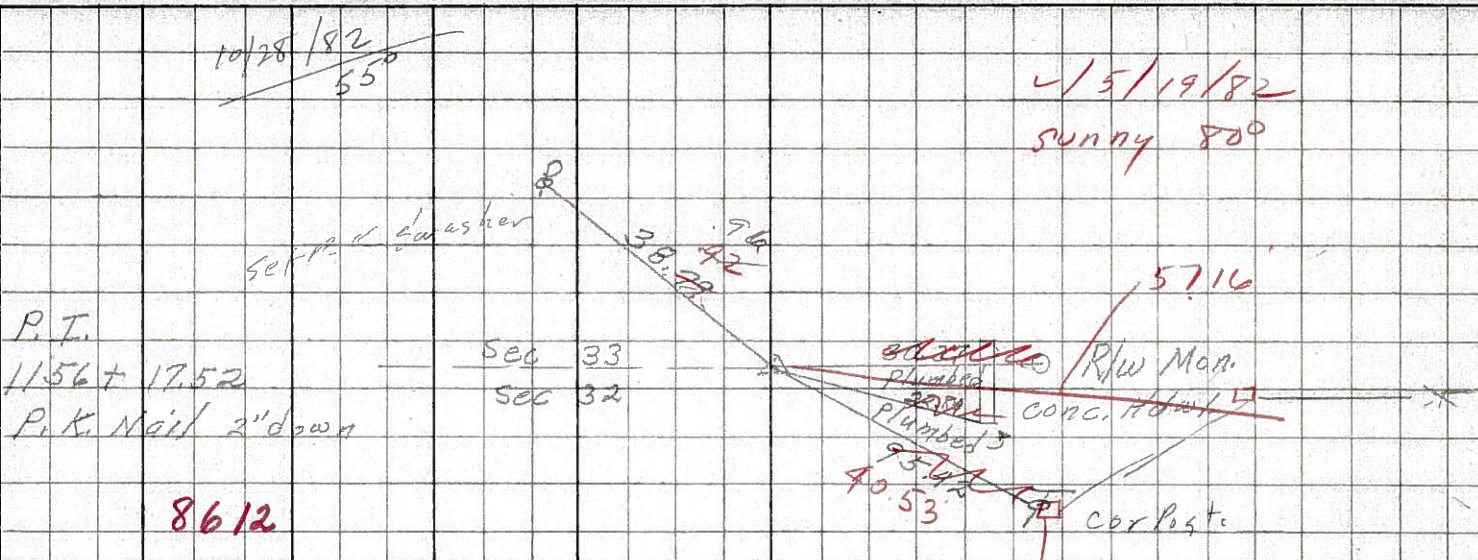
Schneider
Mossler
Barbour
Potts

S. R. U.S. #229 WEATHER Fair
SEC. S.R. #100 to Attica TEMP. 90°

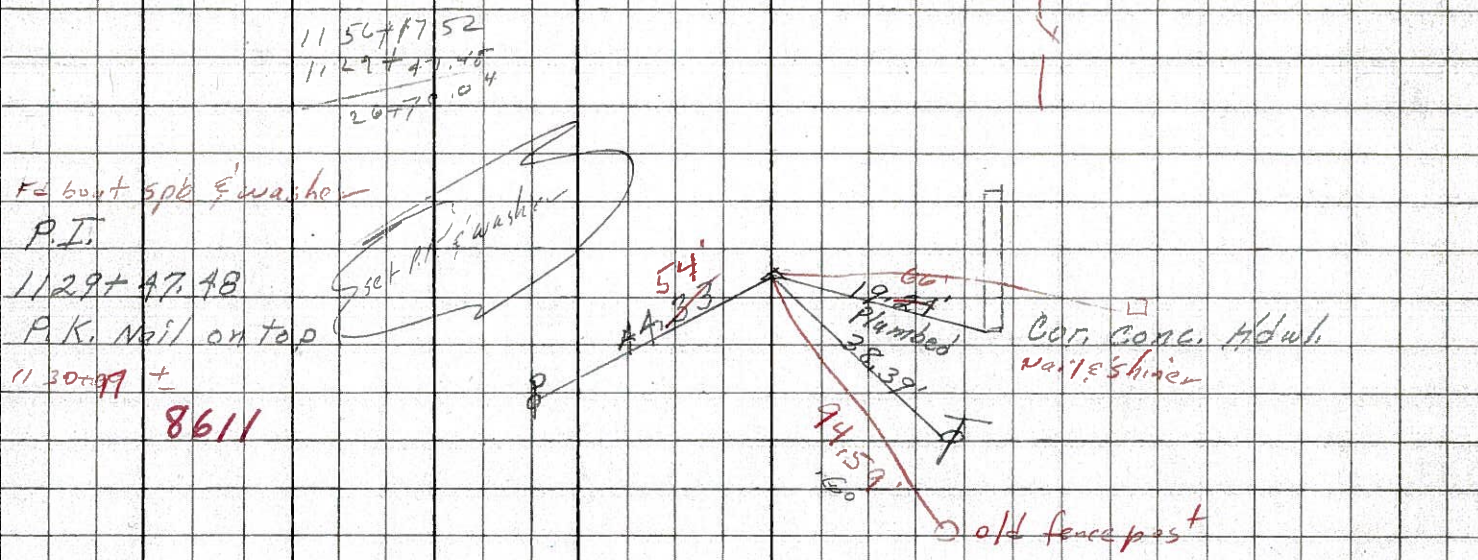
DESCRIPTION Ties for Control Points JOB NO.

LEFT CENTER LINE RIGHT

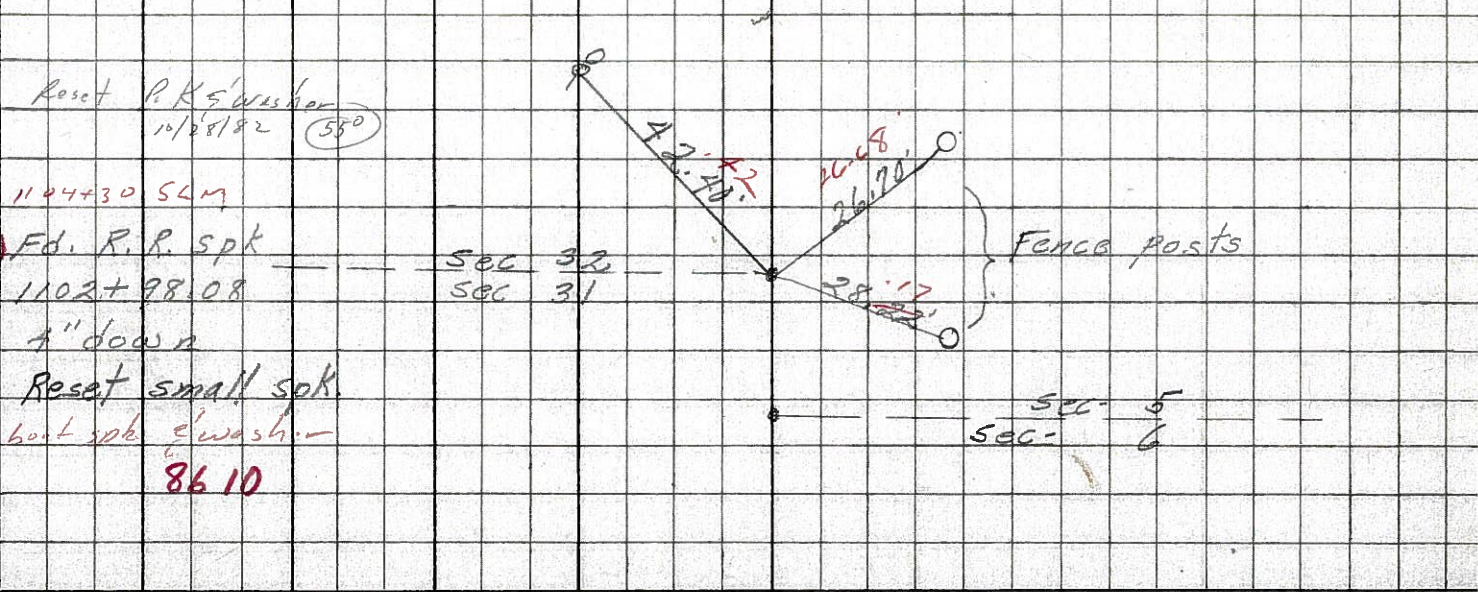
(66)



(65)



(64-A)



PERSONNEL TITLE PERSONNEL TITLE

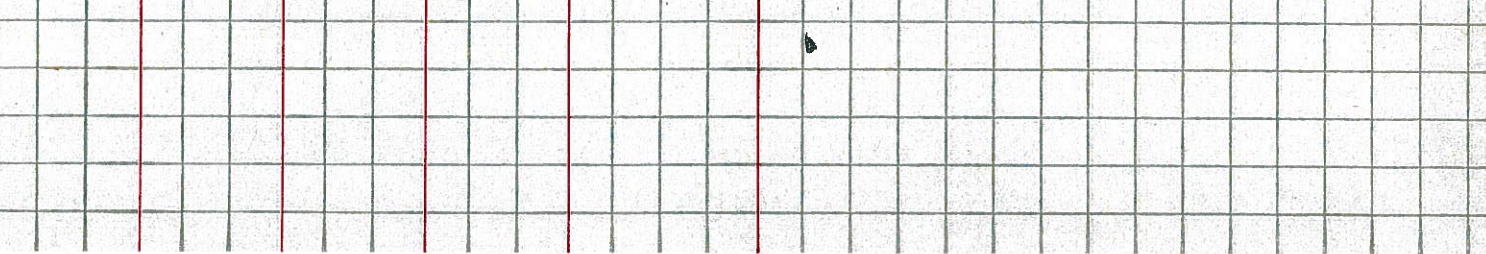
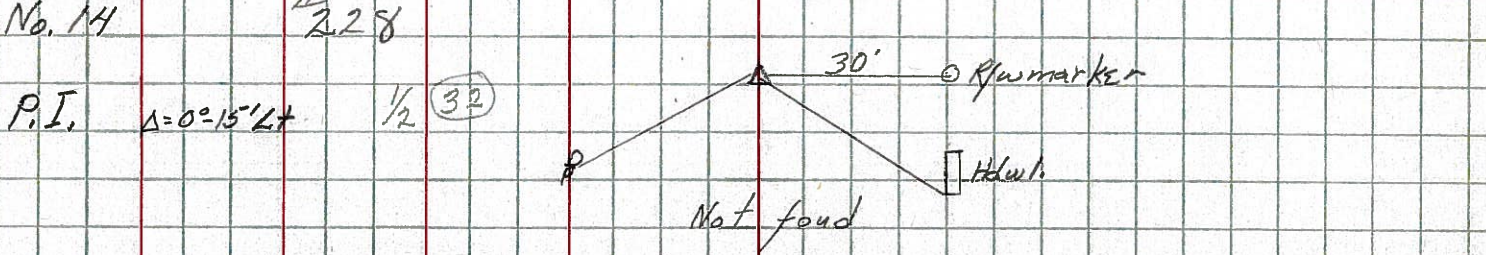
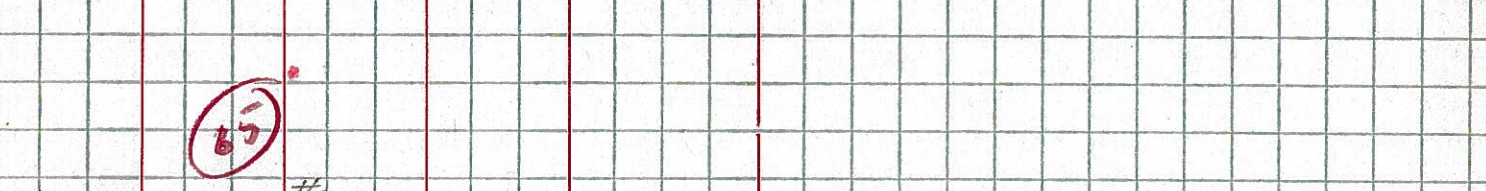
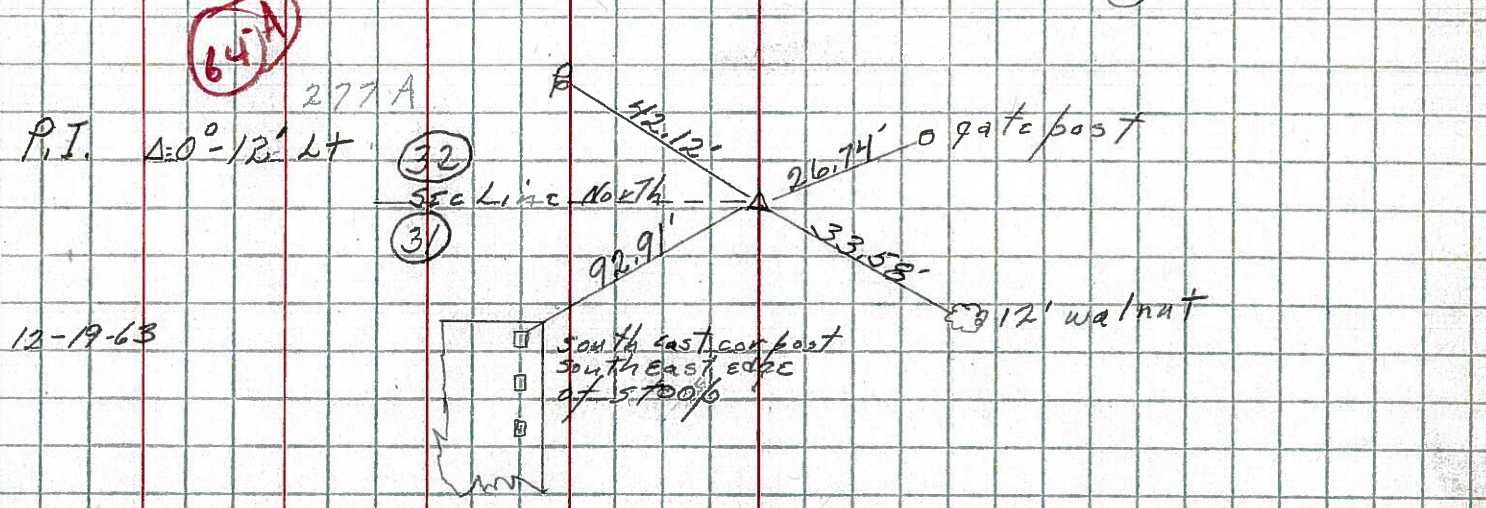
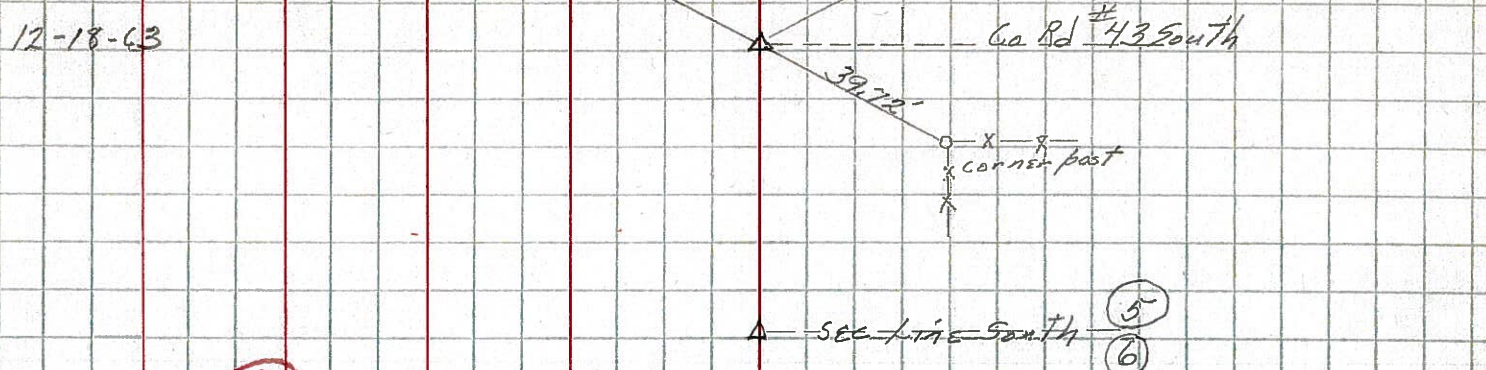
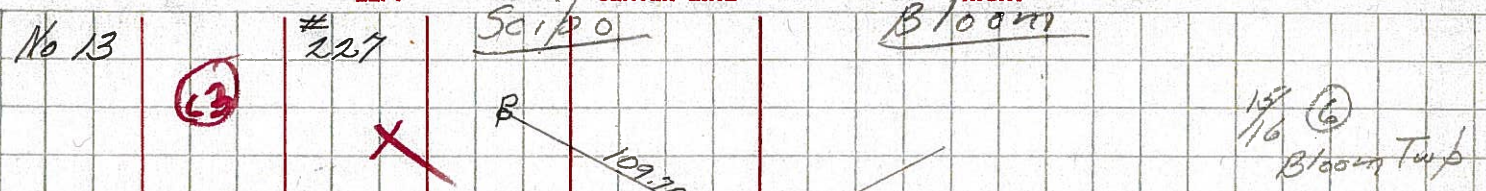
COUNTY Seneca DATE _____

Bill Lowaleski
Brooks

S. R. 224 WEATHER _____

SEC. _____ TEMP. _____

DESCRIPTION LEFT CENTER LINE RIGHT JOB NO.



PERSONNEL TITLE PERSONNEL TITLE

COUNTY Seneca

DATE 11-24-53

S. R. #224

WEATHER

SEC. A

TEMP.

DESCRIPTION SH. 272

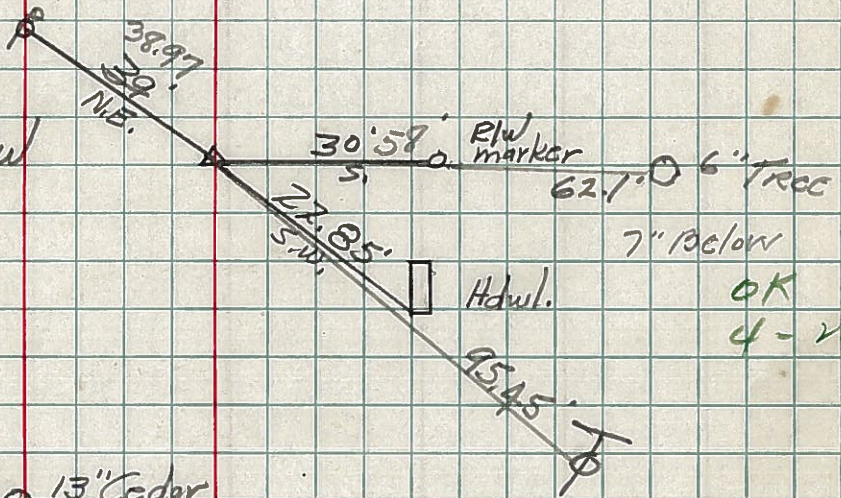
JOB NO.

LEFT

CENTER LINE

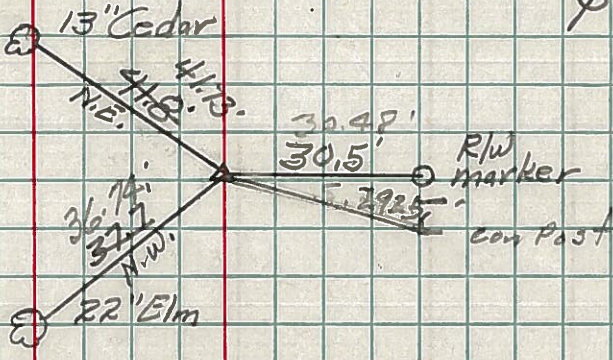
RIGHT

No. 15
R.R. Spike on $\frac{1}{2}$ of R/W
#229



6" Tree
7" below
Hdw. OK
4-26-60

No. 16
R.R. Spike on $\frac{1}{2}$ of R/W
#230



13" Cedar
R/W marker
con Post
OK
4-26-60
55-RR-Spike