

O.D.O.T. DISTRICT 2 SURVEY OFFICE (USE ONLY)

PERSONNEL

REFERENCE NO. 66

SHEET 8 OF 37

NOTES RHOADES

DATE 11/7/23

ROUTE US 224

H.C. AUBLE

WEATHER CLOUDY

COUNTY SENECA

R.C. ASTON

TEMP. 54°

TOWNSHIP SCIPIO

NIESE

SECTION 32

DWG BY RHOADES PID 101217

T 2 N R 16 E

TYPE MONUMENT MAG/WASHER

ON SURFACE - ~~BELOW~~ ON

OFFSET CL PAVEMENT ON LT : RT

10.4' TO RT EDGE PAVEMENT

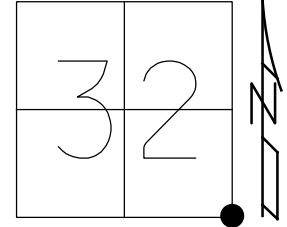
STATION: 1105+75.05

HORIZ. DATUM: NAD83 2011

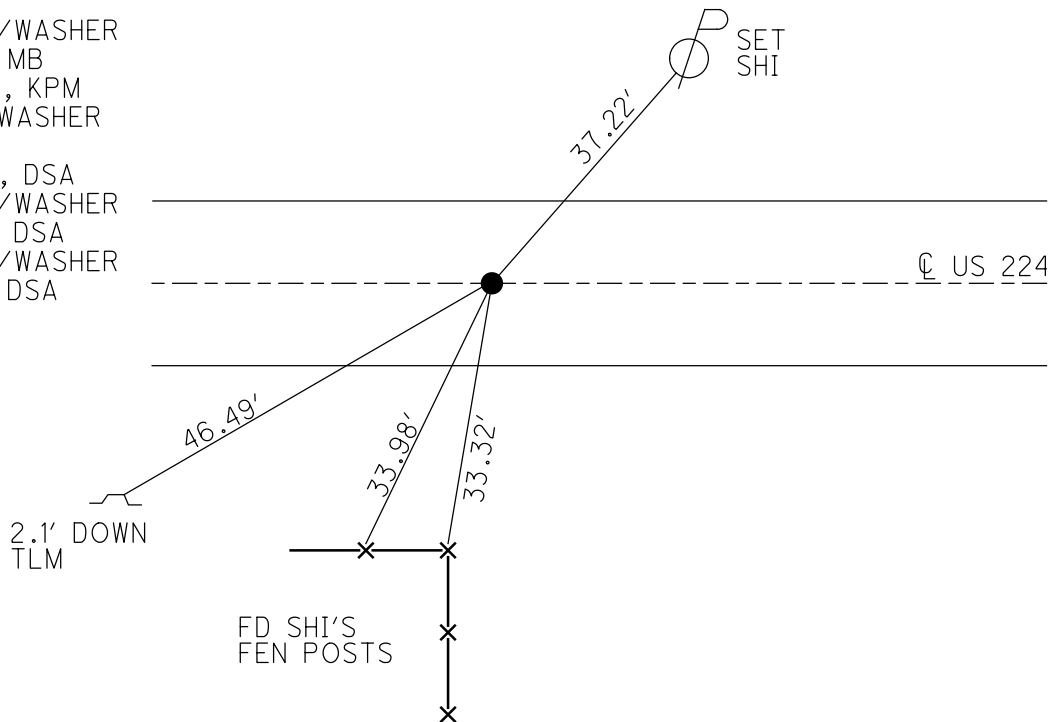
GEOID: NAVD88 2018

GRID: NORTHING: 515752.955

EASTING: 1821188.958



RECORD: P.I.
 STA. 1156+17.52
 FD P.K.NAIL
 SET P.K./WASHER
 10/28/82
 FD P.K./WASHER
 6/30/92, JLR
 SET P.K./WASHER
 11/30/92, JLR
 FD P.K./WASHER
 2" DOWN
 6/16/08
 SET MAG/WASHER
 8/4/09, MB
 10/14/09, KPM
 FD MAG/WASHER
 REF66
 8/24/20, DSA
 SET MAG/WASHER
 7/27/21, DSA
 SET MAG/WASHER
 11/7/23, DSA



O.D.O.T. DISTRICT 2 SURVEY OFFICE (USE ONLY)

PERSONNEL

REFERENCE NO. 66

SHEET 7 OF 33

NOTES RHOADES
 H.C. AUBLE
 R.C. RHOADES

DATE 8/24/20
 WEATHER FAIR
 TEMP. 80°

ROUTE US 224
 COUNTY SENECA
 TOWNSHIP SCIPIO
 SECTION 32
 T 2 N R 16 E

DWG BY NIESE PID PAVE TRAIN

TYPE MONUMENT MAG/WASHER

ON SURFACE - ~~BELOW~~ ON

OFFSET 0 PAVEMENT ON LT : RT
10.4' TO RT EDGE PAVEMENT

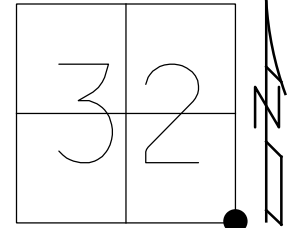
STATION: 1105+75.05

HORIZ.DATUM: NAD83 2011

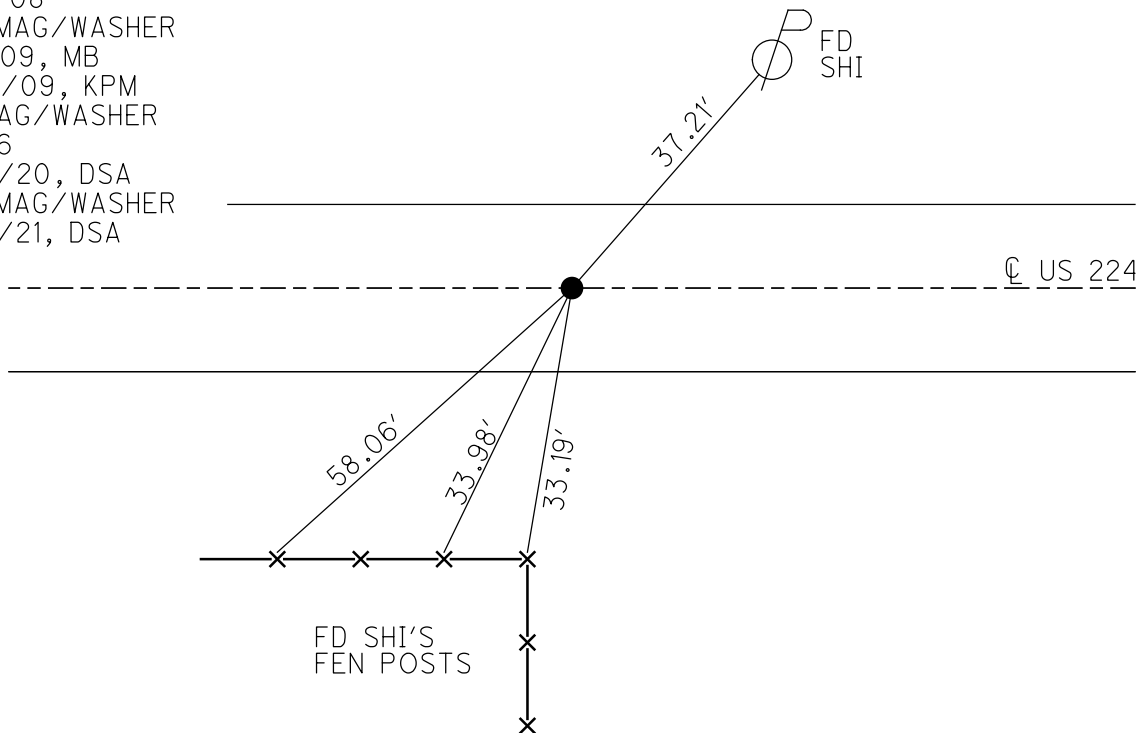
GEOID: NAVD88 2012A

GRID: NORTHING: 515753.020

EASTING: 1821188.897



RECORD: P.I.
 STA. 1156+17.52
 FD P.K.NAIL
 SET P.K./WASHER
 10/28/82
 FD P.K./WASHER
 6/30/92, JLR
 SET P.K./WASHER
 11/30/92, JLR
 FD P.K./WASHER
 2" DOWN
 6/16/08
 SET MAG/WASHER
 8/4/09, MB
 10/14/09, KPM
 FD MAG/WASHER
 REF66
 8/24/20, DSA
 SET MAG/WASHER
 7/27/21, DSA



O.D.O.T. DISTRICT 2 SURVEY OFFICE

PERSONNEL

REFERENCE NO. 66

SHEET 7 OF 35

NOTES Moser

DATE 8-4-09

ROUTE U.S. 224

H.C. Moser

WEATHER Fair

COUNTY SENECA

R.C. Pietkowski

TEMP. +40°

TOWNSHIP SCIPIO

Goldberg

SECTION 32

T 2 N R 16 E

TYPE MONUMENT P.K./WASHER

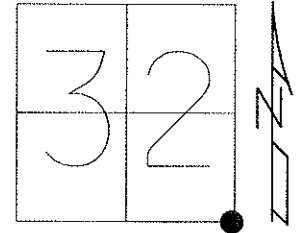
~~ON SURFACE~~ - BELOW 2"

LEFT - ☉ PAV'T - RIGHT ON

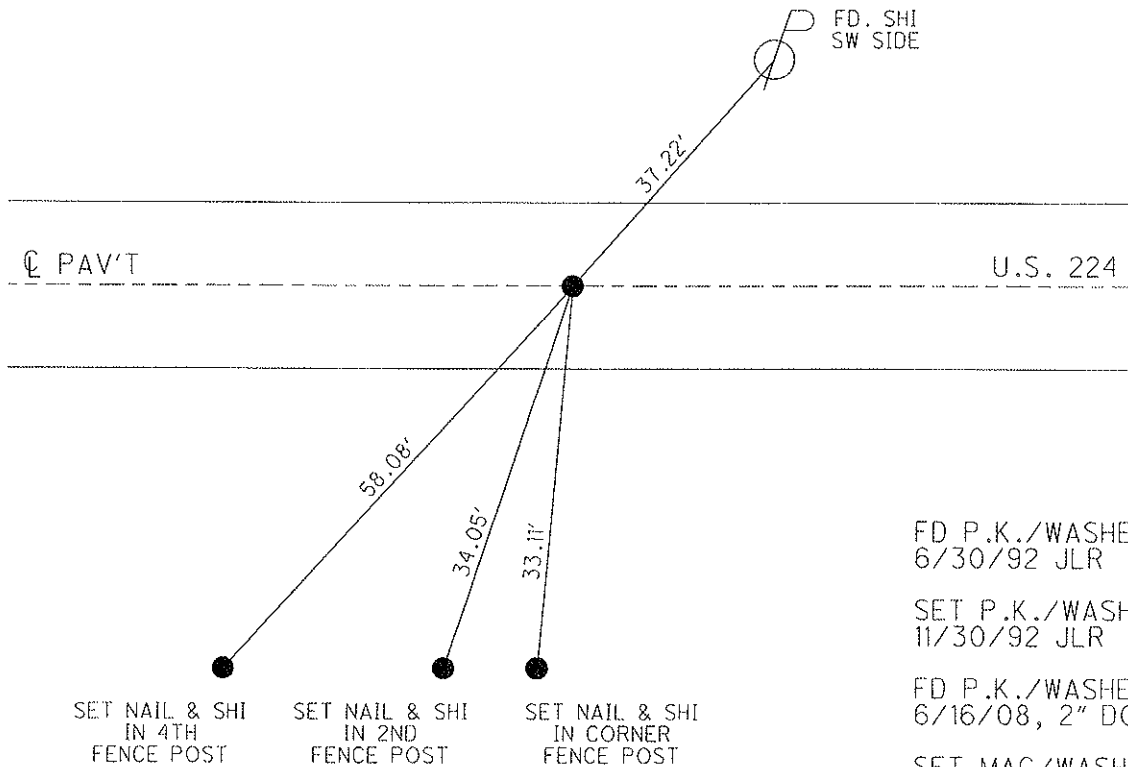
10.4' TO RT EDGE PAVEMENT

S.L.M. 1105 + 75.06

Grid: Northing: 515753.020 Easting: 1821188.897



RECORD: 10-28-82
 PI STA 1156+17.52
 SET PK&WASHER ATOP PK
 HUB-FIELD BOOK 54(FROM LOFT)
 ALSO HUB 20' WEST FOR GOVT OFFSET.



FD P.K./WASHER
6/30/92 JLR

SET P.K./WASHER
11/30/92 JLR

FD P.K./WASHER
6/16/08, 2" DOWN

SET MAG/WASHER
8/4/09 MB

RESET MAG/WASHER
10/14/09 KPM

O.D.O.T. DISTRICT 2 SURVEY OFFICE

PERSONNEL

REFERENCE NO. 66

SHEET 50 OF 32

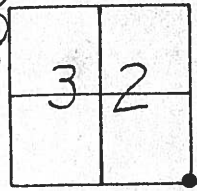
NOTES Cheney
 H.C. RIPPLE
 R.C. BARBOUR
Geyman

DATE 6-30-92
 WEATHER Cloudy
 TEMP. 55°

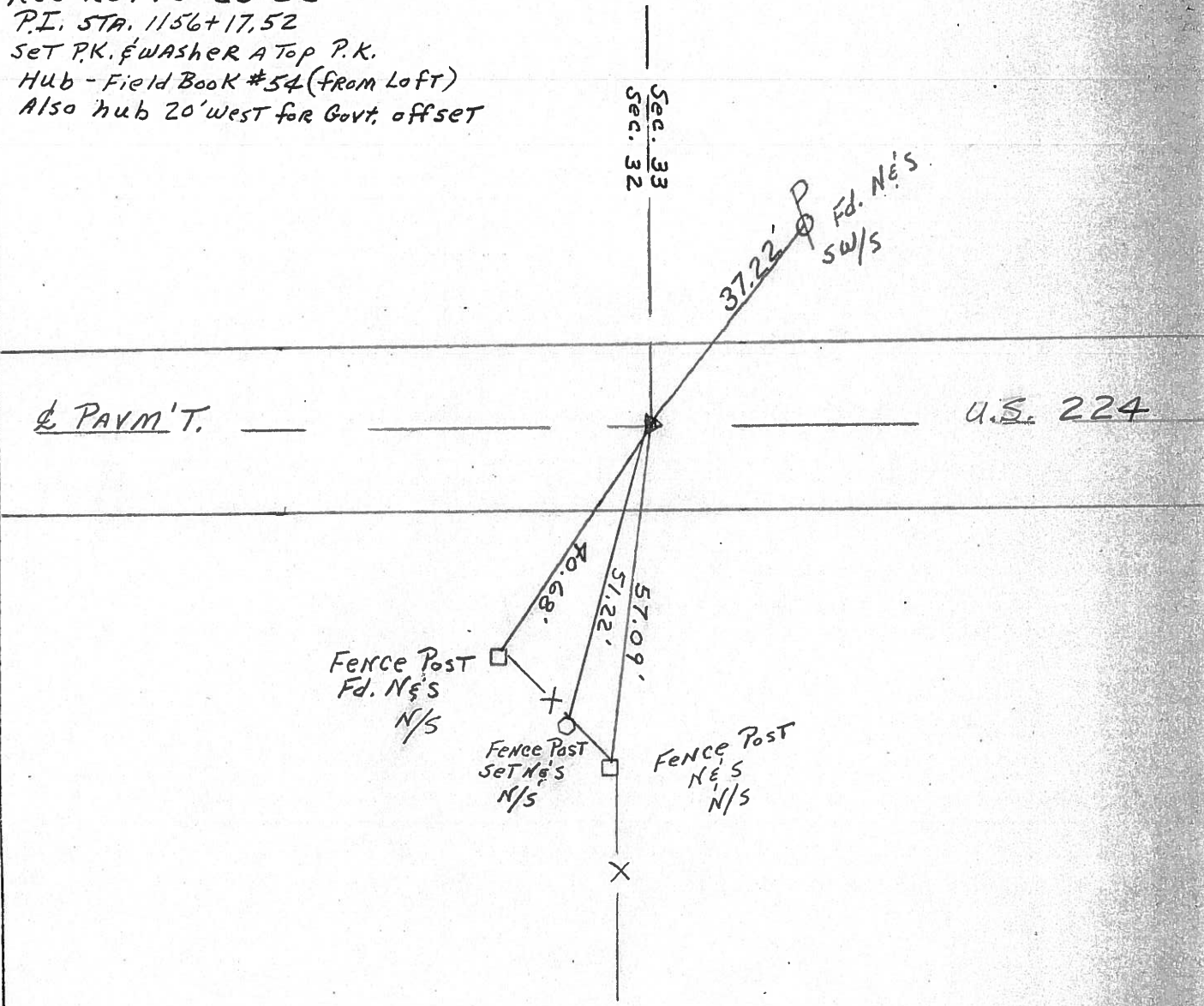
ROUTE U.S. 224
 COUNTY SENeca
 TOWNSHIP Scipio
 SECTION 32
T 2 N R 16 E

TYPE MONUMENT ⁶⁻³⁰⁻⁹² F.d. P.K. & Washer Set P.K. & Washer
 ON SURFACE - ~~BELOW~~ yes
~~LEFT - & PAV'T. - RIGHT~~ yes
10' TO RT. EDGE PAVEMENT
 S.L.M. 1105+32

SET P.K. & WASHER
 11-30-92
 J.L.R.



Record: 10-28-82
 P.I. STA. 1156+17.52
 SET P.K. & WASHER AT OP P.K.
 Hub - Field Book #54 (from Loft)
 Also hub 20' west for Govt. offset



County Seneca S.R. 224

Township Scipio

Section 32

T2N, R1E

Personnel Cronin

Ripple

Geyman

Mosser

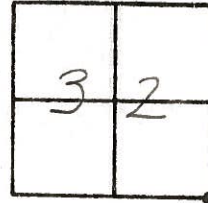
Barbour

66^A

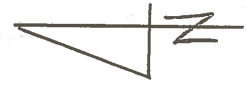
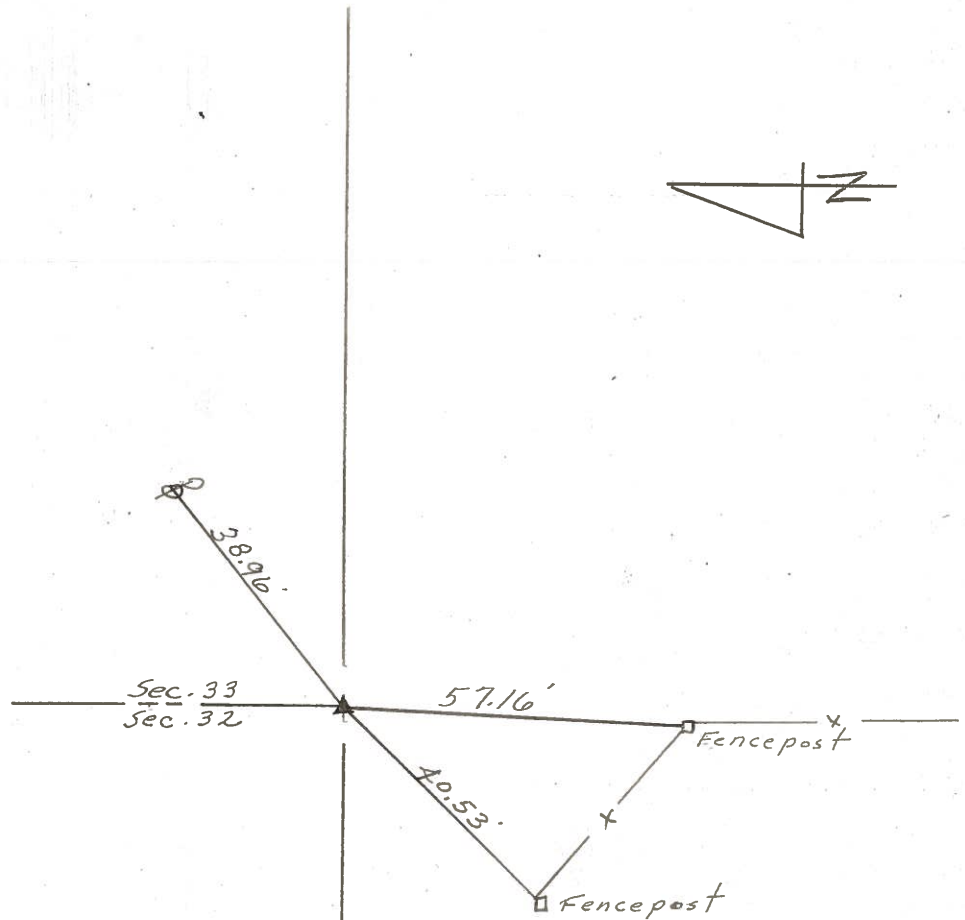
Date 10/28/82 Drawn 11/02/82

Weather sunny

Temp. 55°



P.I.
156 + 17.52
 set P.K. & washer at top
 P.K. - Hub-Field Book
 #54 (from left) also
 sub 20' west for Govt. offset



S.R. U.S. # 2247

PERSONNEL TITLE PERSONNEL TITLE

COUNTY Seneca DATE 3-25-68

Schneider

Mosser

Barbour

Potts

S. R. U.S. #221

WEATHER Fair

SEC. S.R. #100 to Attica

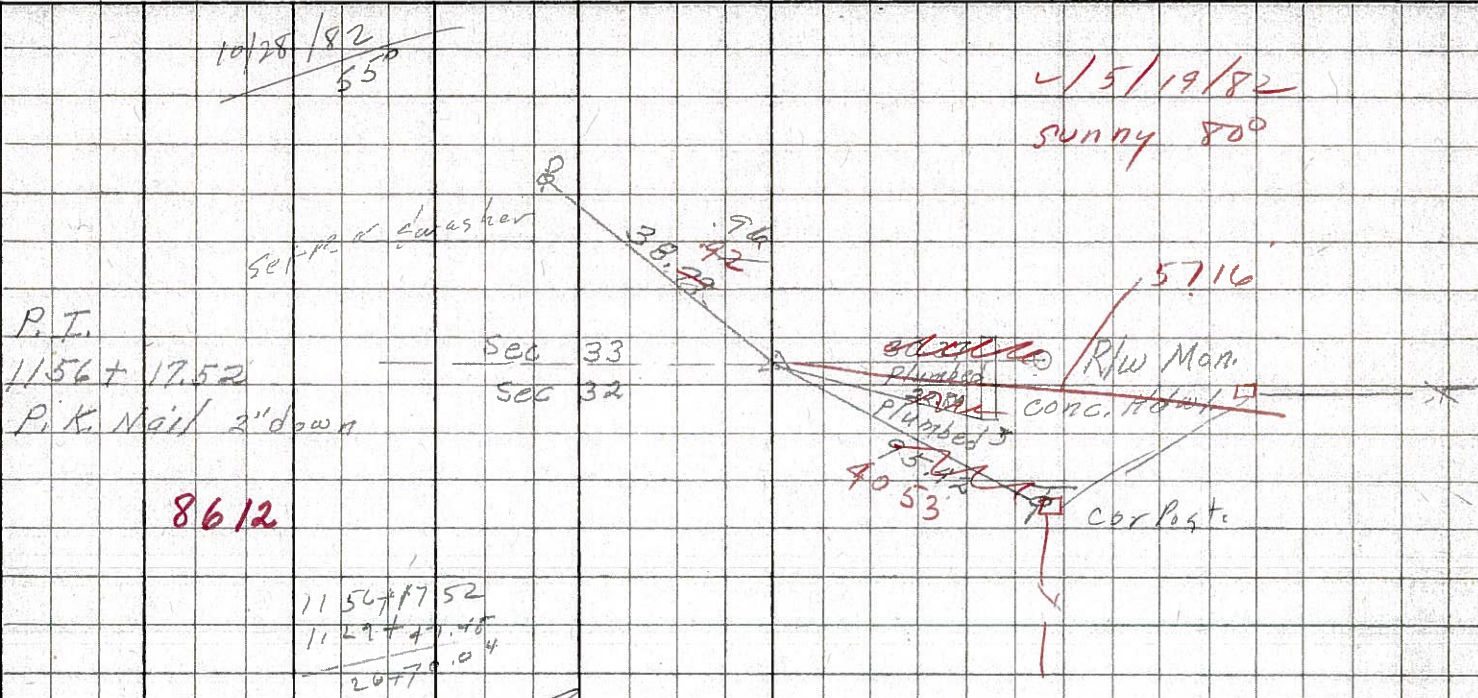
TEMP. 90°

DESCRIPTION Ties for Control Points

JOB NO.

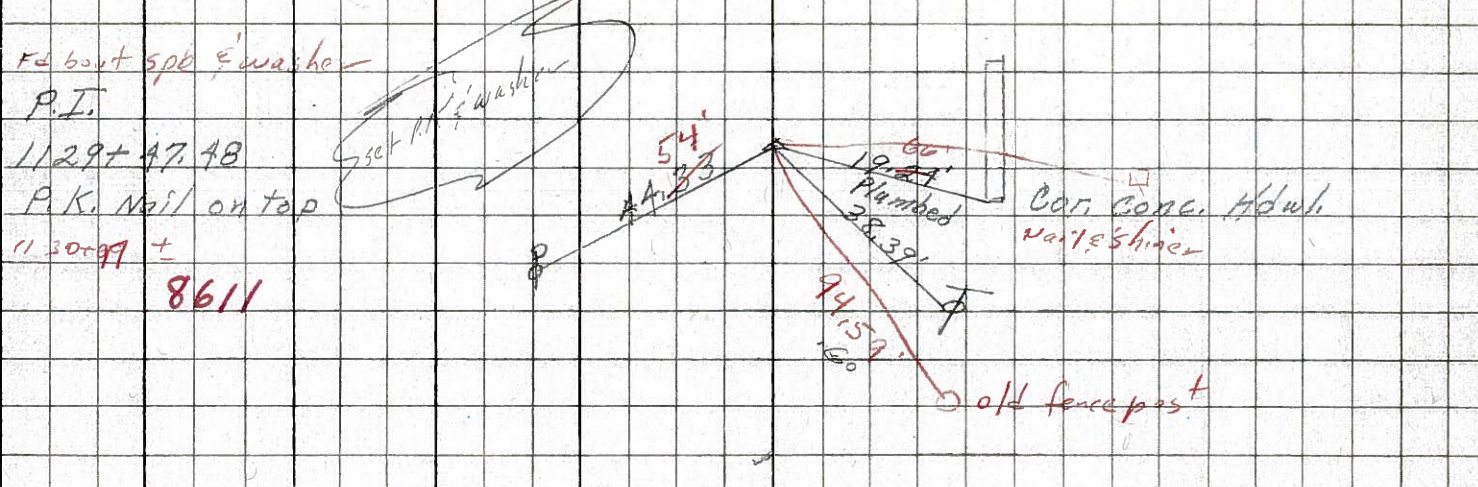
LEFT CENTER LINE RIGHT

(66)

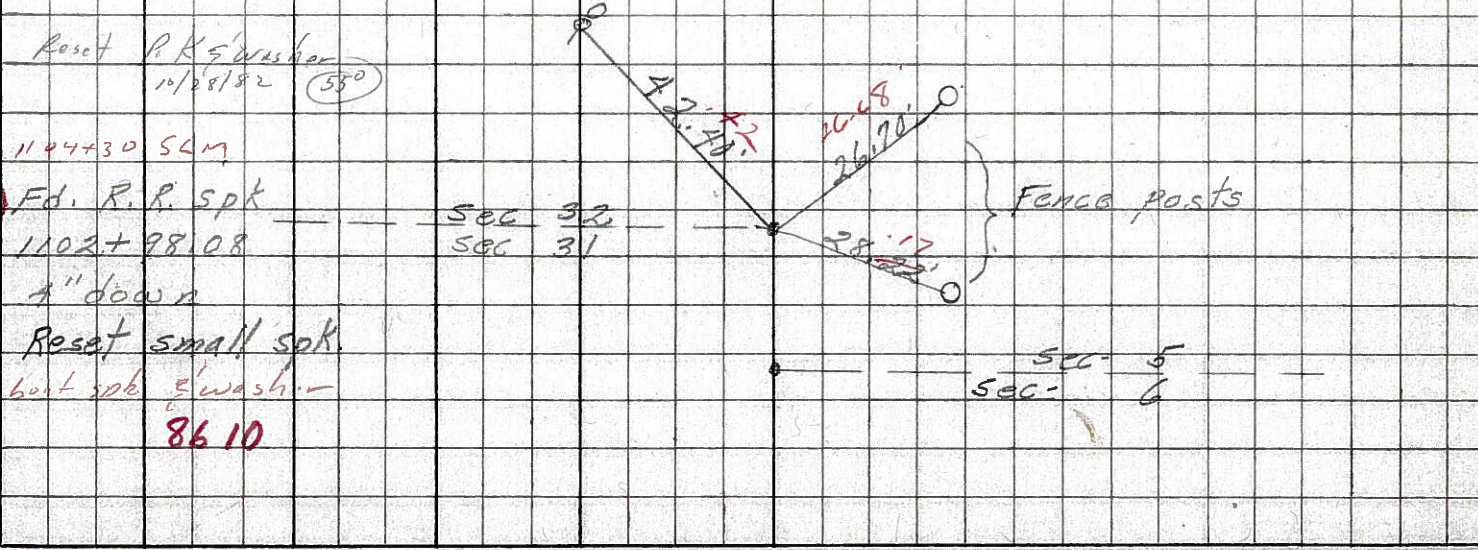


1/5/19/82
sunny 80°

(65)



(64-A)



PERSONNEL TITLE PERSONNEL TITLE

Krabill
Kowaleski
Brooks

COUNTY Seneca DATE _____

S. R. 224 WEATHER _____

SEC. _____ TEMP. _____

DESCRIPTION LEFT CENTER LINE RIGHT JOB NO.

