

O.D.O.T. DISTRICT 2 SURVEY OFFICE (USE ONLY)

PERSONNEL

REFERENCE NO. 66 A

SHEET 9 OF 37

NOTES RHOADES DATE 11/7/23

ROUTE US 224

H.C. AUBLE WEATHER CLOUDY

COUNTY SENECA

R.C. ASTON TEMP. 54°

TOWNSHIP BLOOM

NIESE

SECTION 4

DWG BY RHOADES PID 101217

T 1 N R 16 E

TYPE MONUMENT MAG/WASHER

ON SURFACE - ~~BELOW~~ ON

OFFSET \odot PAVEMENT ON LT : RT

10.7' TO RT EDGE PAVEMENT

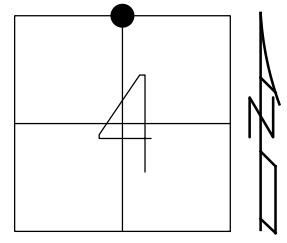
STATION: 1131+98.71

HORZ. DATUM: NAD83 2011

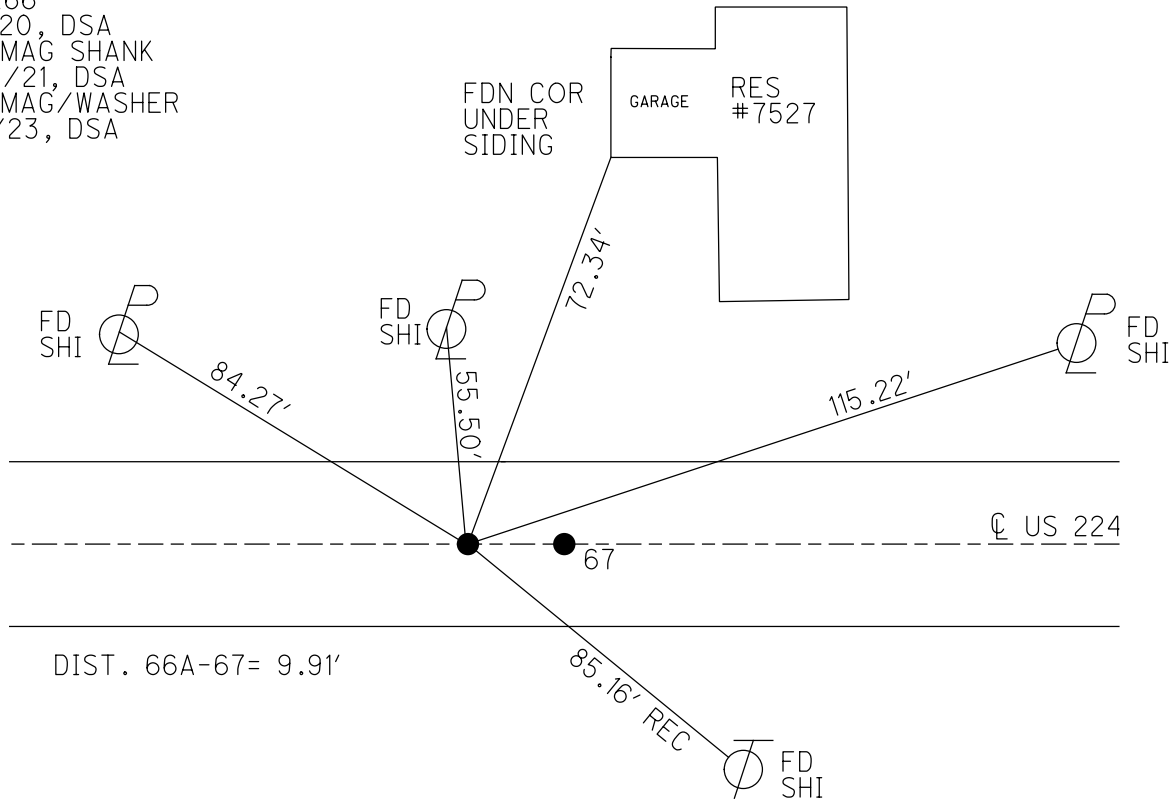
GEOID: NAVD88 2018

GRID: NORTHING: 515752.791

EASTING: 1823812.530



RECORD:
 UNKNOW ORIGIN
 FD MAG/WASHER
 REFA66
 9/1/20, DSA
 SET MAG SHANK
 7/27/21, DSA
 SET MAG/WASHER
 11/7/23, DSA



O.D.O.T. DISTRICT 2 SURVEY OFFICE (USE ONLY)

PERSONNEL _____

REFERENCE NO. 66 A

SHEET 8 OF 33

NOTES RHOADES DATE 9/1/20

ROUTE US 224

H.C. AUBLE WEATHER HAZE

COUNTY SENECA

R.C. RHOADES TEMP. 72°

TOWNSHIP BLOOM

SECTION 4

DWG BY NIESE PID PAVE TRAIN

T 1 N R 16 E

TYPE MONUMENT MAG/WASHER

ON SURFACE - ~~BELOW~~ ON

OFFSET CL PAVEMENT ON LT : RT

10.7' TO RT EDGE PAVEMENT

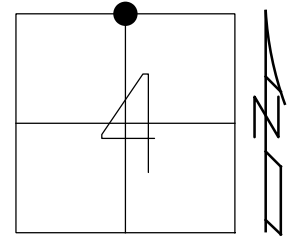
STATION: 1131+98.71

HORIZ.DATUM: NAD83 2011

GEOID: NAVD88 2012A

GRID: NORTHING: _____

EASTING: _____



RECORD:
 UNKNOW ORIGIN
 FD MAG/WASHER
 REFA66
 9/1/20, DSA
 SET MAG SHANK
 7/27/21, DSA

RES
 #7527

