

O.D.O.T. DISTRICT 2 SURVEY OFFICE (USE ONLY)

PERSONNEL

REFERENCE NO. 68

SHEET 11 OF 37

NOTES RHOADES

DATE 11/7/23

ROUTE US 224

H.C. AUBLE

WEATHER CLOUDY

COUNTY SENECA

R.C. ASTON

TEMP. 54°

TOWNSHIP SCIPIO

NIESE

SECTION 34

DWG BY RHOADES

PID 101217

T 2 N R 16 E

TYPE MONUMENT MAG/WASHER

ON SURFACE - ~~BELOW~~ ON

OFFSET 0.5' LT : ~~RT~~

10.5' TO LT EDGE PAVEMENT

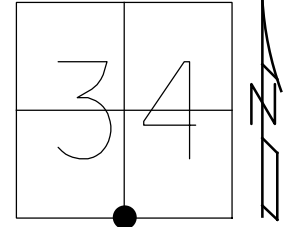
STATION: 1158+47.52

HORZ.DATUM: NAD83 2011

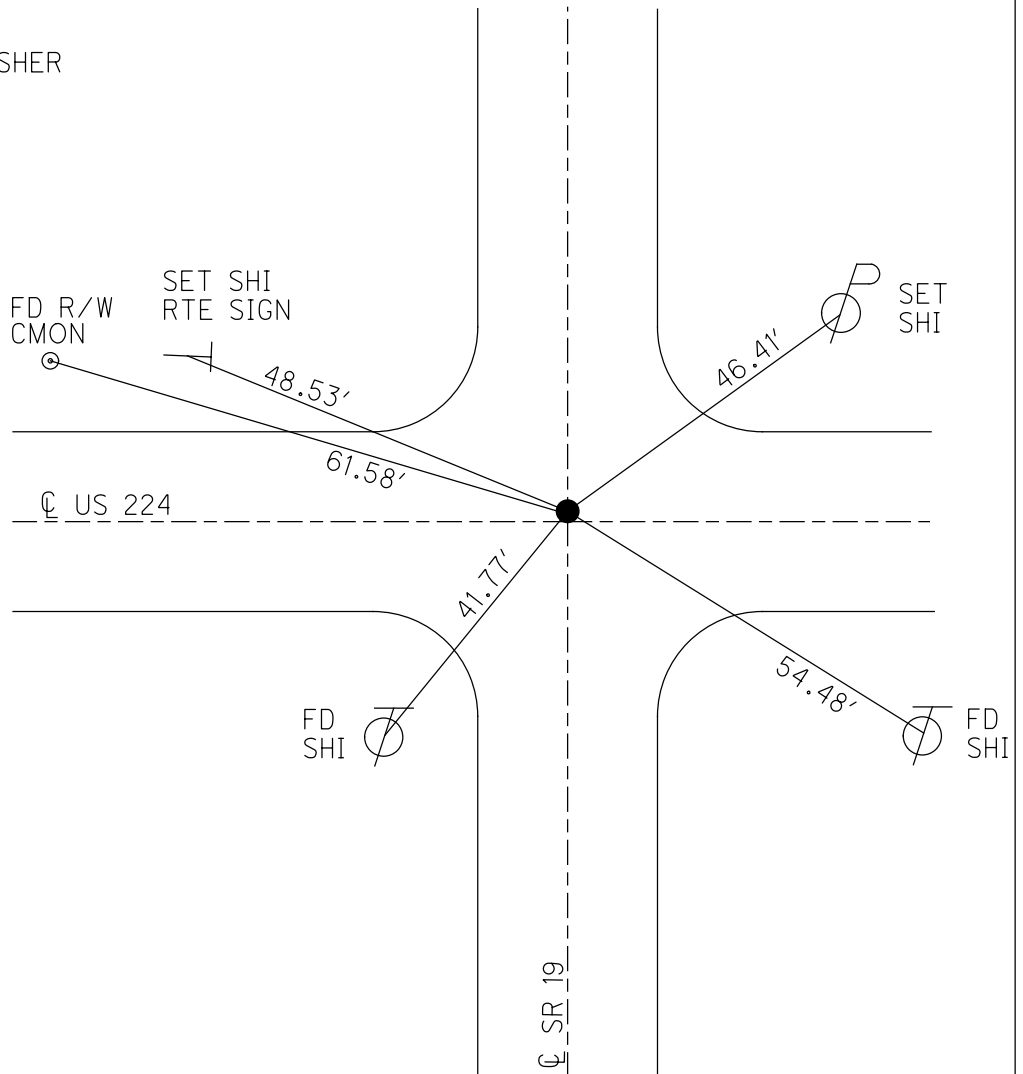
GEOID: NAVD88 2018

GRID: NORTHING: 515759.107

EASTING: 1826461.300



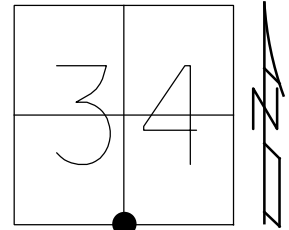
RECORD: P.I.
 STA.1208+89.68
 FD BOAT SPIKE/WASHER
 ATOP R.R.SPIKE
 SET P.K./WASHER
 10/28/82
 FD BOAT SPIKE
 3" DOWN
 6/30/92, JLR
 SET P.K./WASHER
 11/30/92, JLR
 FD SM.R.R.SPIKE
 3" DOWN
 6/16/08
 SET MAG/WASHER
 8/4/09, MB
 10/14/09, KPM
 FD MAG NAIL
 REF68
 9/1/20, DSA
 3/17/21, JFO
 FD P.K.NAIL
 5" DOWN
 REF68
 6/15/23, DSA
 SET MAG/WASHER
 11/7/23, DSA



O.D.O.T. DISTRICT 2 SURVEY OFFICE (USE ONLY)

PERSONNEL _____ REFERENCE NO. 68 SHEET 10 OF 33
 NOTES RHOADES DATE 3/17/21 ROUTE US 224
 H.C. O'DONNELL WEATHER FAIR COUNTY SENECA
 R.C. _____ TEMP. 45° TOWNSHIP SCIPIO
 DWG BY NIESE PID PAVE TRAIN SECTION 34
 T 2 N R 16 E

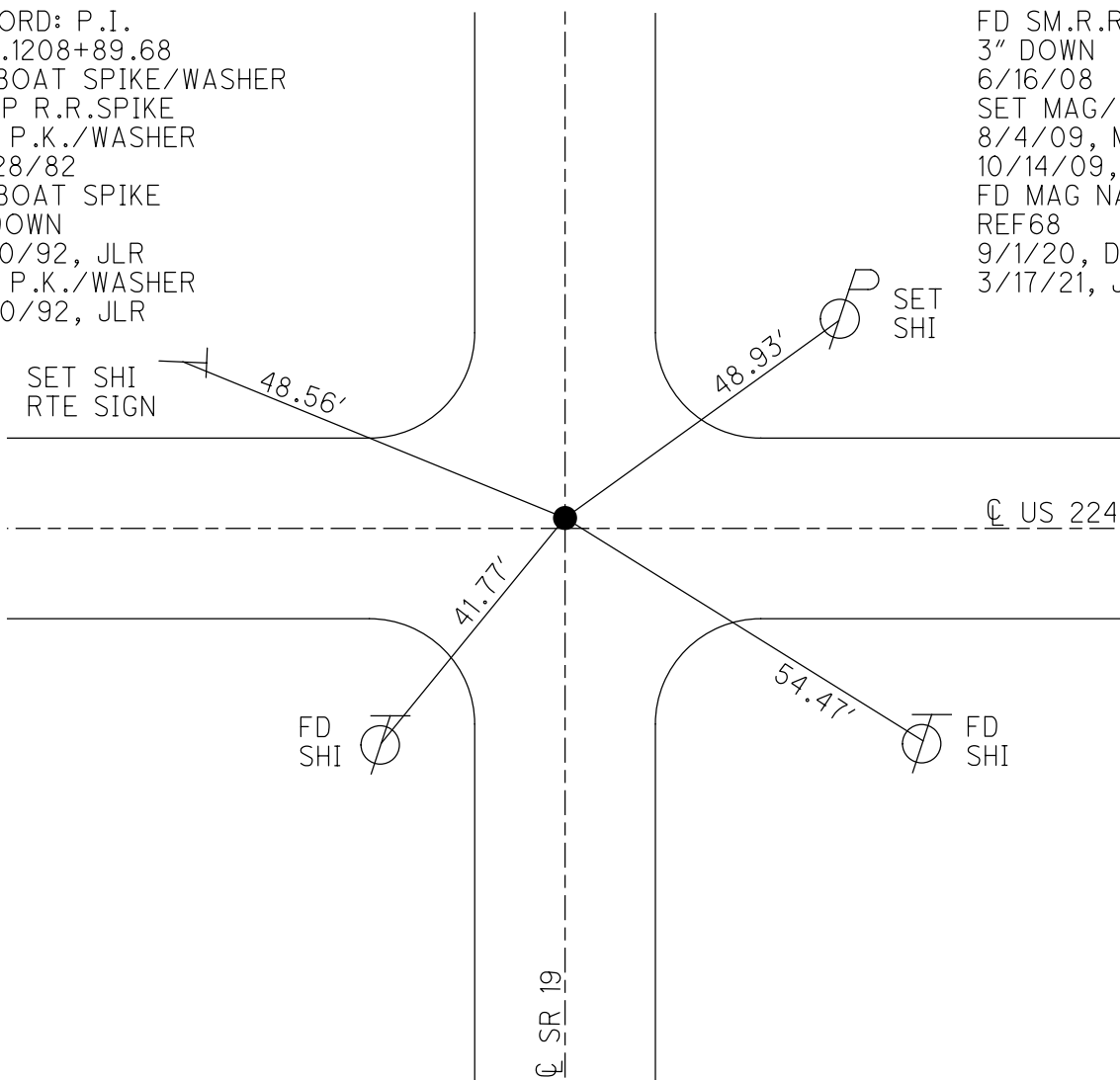
TYPE MONUMENT MAG NAIL
 ON SURFACE - ~~BELOW~~ ON
 OFFSET 0.5' LT : ~~RT~~
10.5' TO LT EDGE PAVEMENT
 STATION: 1158+47.52



HORZ.DATUM: NAD83 2011 GEOID: NAVD88 2012A
 GRID: NORTHING: 515759.142 EASTING: 1826461.263

RECORD: P.I.
 STA.1208+89.68
 FD BOAT SPIKE/WASHER
 ATOP R.R.SPIKE
 SET P.K./WASHER
 10/28/82
 FD BOAT SPIKE
 3" DOWN
 6/30/92, JLR
 SET P.K./WASHER
 11/30/92, JLR

FD SM.R.R.SPIKE
 3" DOWN
 6/16/08
 SET MAG/WASHER
 8/4/09, MB
 10/14/09, KPM
 FD MAG NAIL
 REF68
 9/1/20, DSA
 3/17/21, JFO



O.D.O.T. DISTRICT 2 SURVEY OFFICE

PERSONNEL

REFERENCE NO. 68

SHEET 9 OF 35

NOTES Moser

DATE 8-4-09

ROUTE U.S. 224

H.C. Moser

WEATHER Fair

COUNTY SENECA

R.C. Pietkowski

TEMP. +40°

TOWNSHIP SCIPIO

Goldberg

SECTION 33, 34

T 2 N R 16 E

TYPE MONUMENT BOAT SPK.

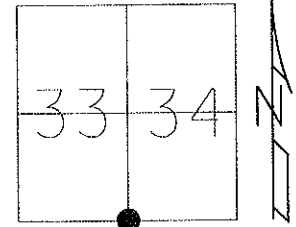
~~ON SURFACE~~ - BELOW 3"

LEFT - \odot PAV'T - RIGHT 2'

10.5' TO LT EDGE PAVEMENT

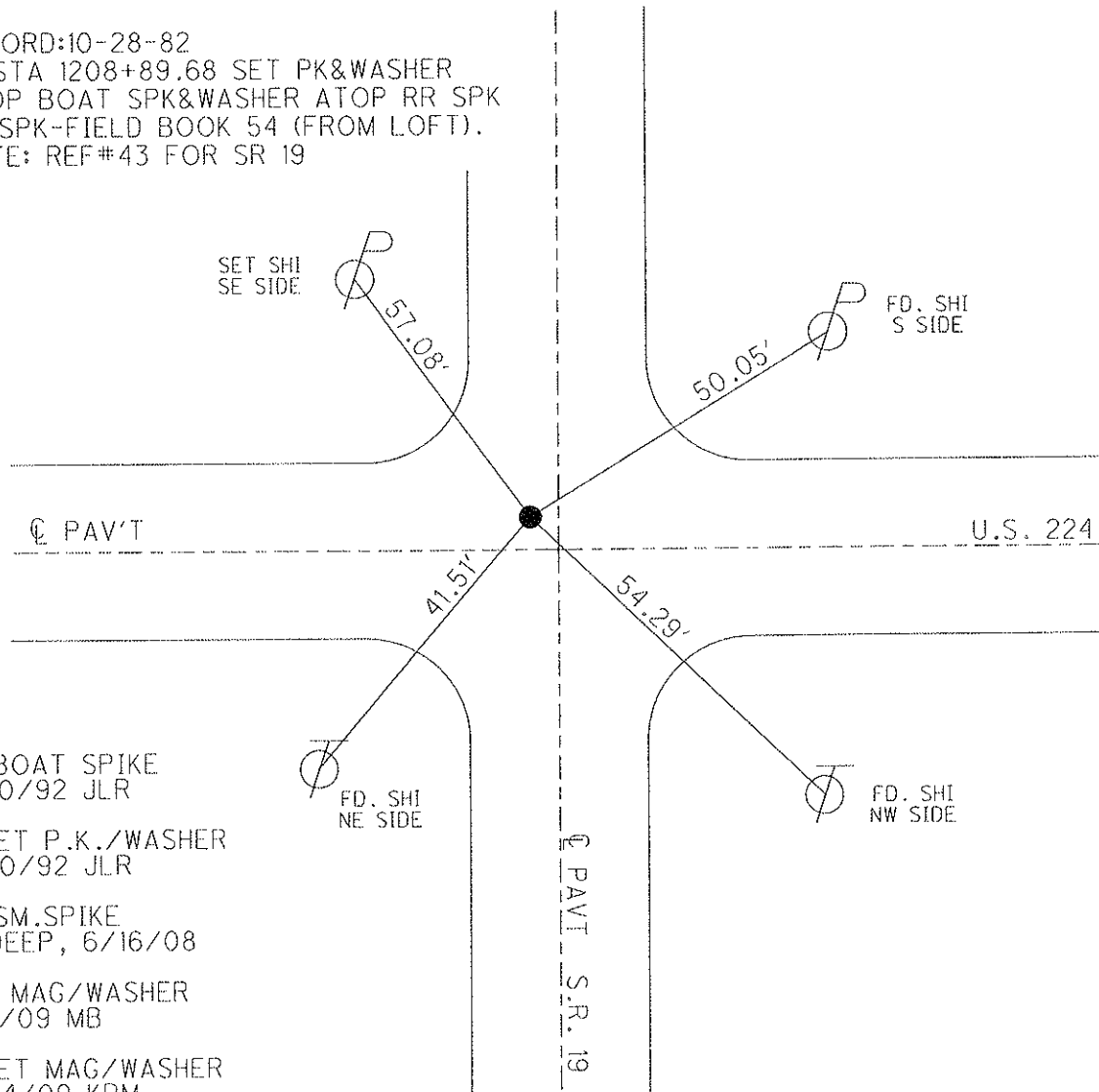
S.L.M. 1158 + 47.52

Grid: Northing: 515759.142 Easting: 1826461.263



RECORD: 10-28-82

PI STA 1208+89.68 SET PK&WASHER
 ATOP BOAT SPK&WASHER ATOP RR SPK
 RR SPK-FIELD BOOK 54 (FROM LOFT).
 NOTE: REF#43 FOR SR 19



FD BOAT SPIKE
 6/30/92 JLR

RESET P.K./WASHER
 11/30/92 JLR

FD SM.SPIKE
 3" DEEP, 6/16/08

SET MAG/WASHER
 8/4/09 MB

RESET MAG/WASHER
 10/14/09 KPM

O.D.O.T. DISTRICT 2 SURVEY OFFICE

PERSONNEL

REFERENCE NO. 68

SR 224
#43 SR 19

SHEET 27 OF 32

NOTES Cheney
H.C. Ripple
R.C. BARBOUR
Geyman

DATE 11-30-92
WEATHER Cloudy
TEMP. 35°

ROUTE U.S. 224
COUNTY Seneca
TOWNSHIP Scipio & Bloom
SECTION 33 & 34 - 3 & 4
T 2 N R 16 E

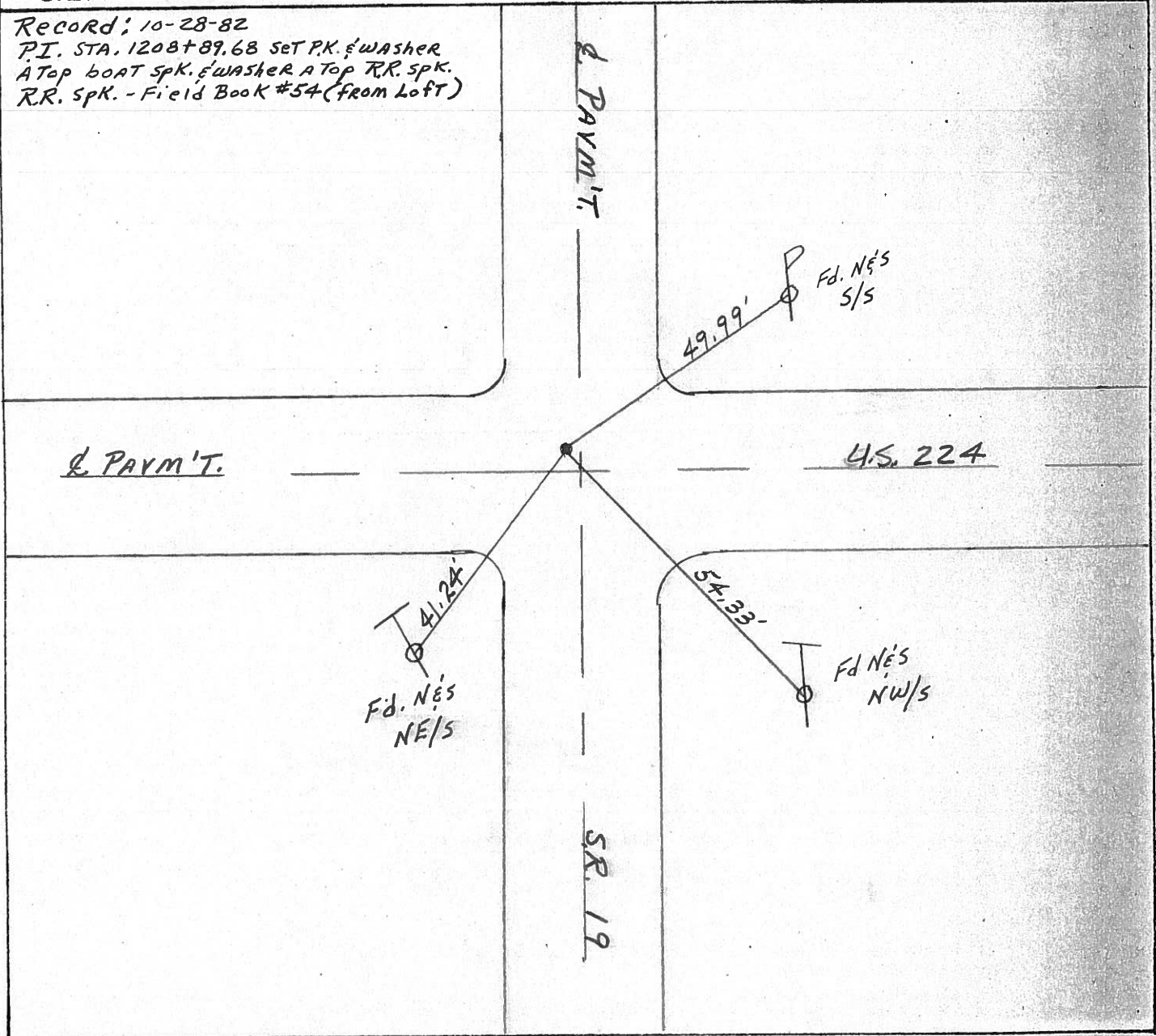
TYPE MONUMENT ⁶⁻³⁰⁻⁹² Fd. Boat Spk. 6-30-92 Reset P.K. & Washer
ON SURFACE - ~~BELOW~~ yes
LEFT - 0 PAV'T. - RIGHT 2'
8' TO LT. EDGE PAVEMENT
S.L.M. 1158+06

Reset P.K. & Washer
11-30-92
JLR

33	34
4	3



Record: 10-28-82
P.I. STA. 1208+89.68 SET P.K. & WASHER
ATop boat spk. & washer ATop RR. spk.
RR. spk. - Field Book #54 (from Left)



County Seneca S.R. 224

Date 10/28/82 Drawn 11/02/82

Township Scipio & Bloom

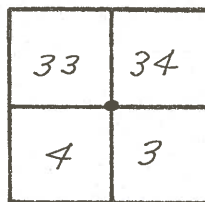
Weather sunny

Section 33 & 34 - 3 & 4

Temp. 60°

T² N, R¹⁶ E

Personnel Cronin



68
224

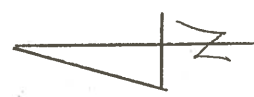
43
19

Ripple

Geuman

Mosser

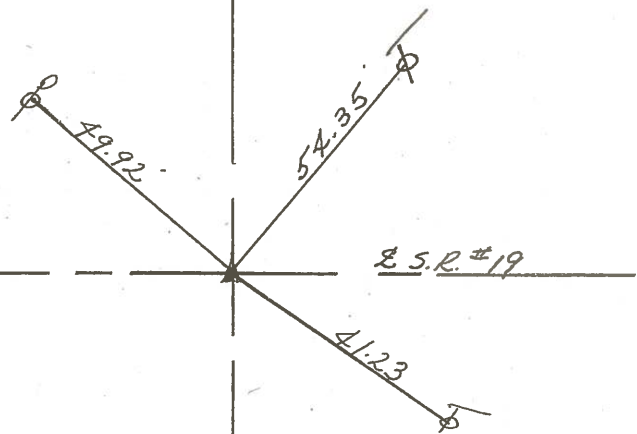
Barbour



P.I.

1208+89.68

Set P.K. & washer atop boat
spike & washer atop R.R. spike
R.R. Spike - Field Book # 54 (from left)



E.R/W U.S. # 2247

PERSONNEL TITLE PERSONNEL TITLE

COUNTY Seneca DATE 3-25-68

Schneider
Masser
Barbour
Pott

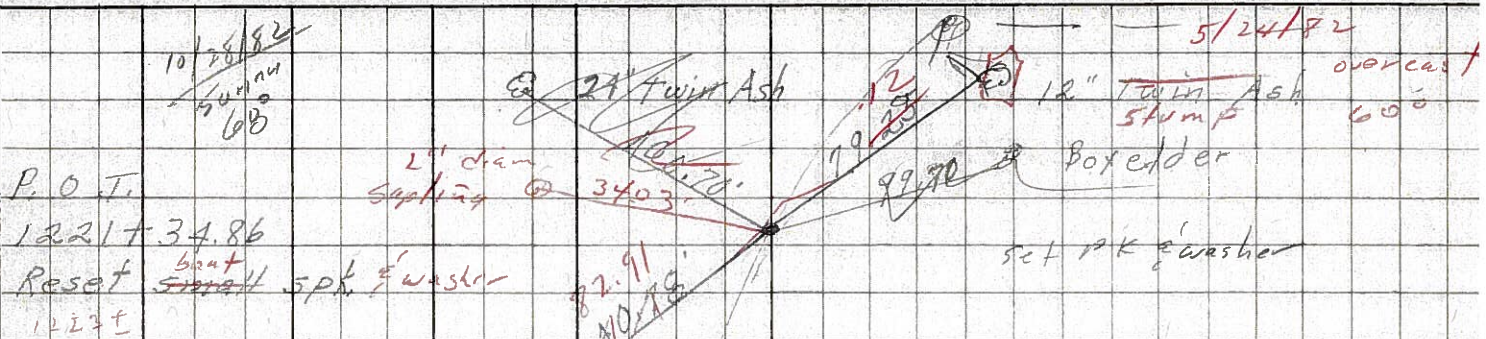
S. R. U.S. # 224 WEATHER Fair

SEC. SR. #100 to Attica TEMP. 40°

DESCRIPTION Ties for Control Points JOB NO.

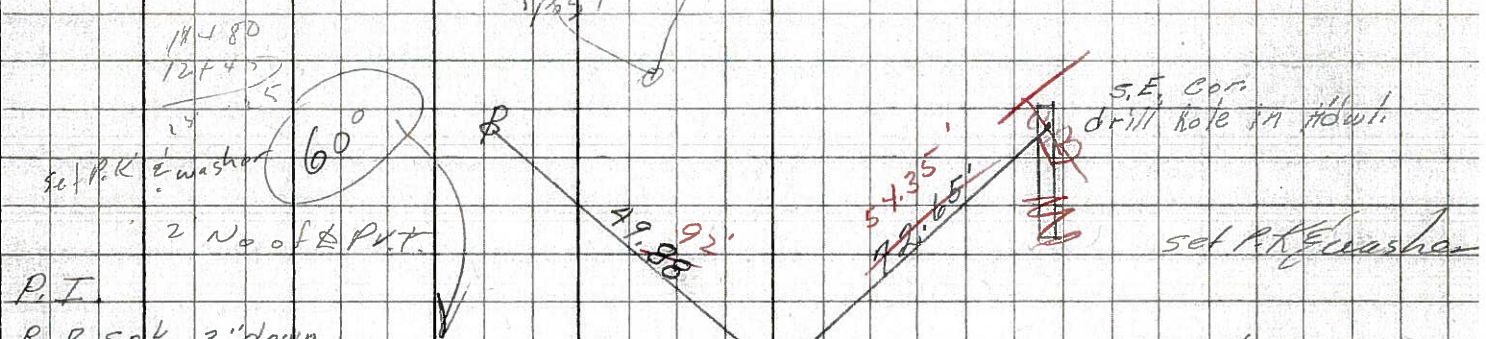
LEFT CENTER LINE RIGHT

(69)



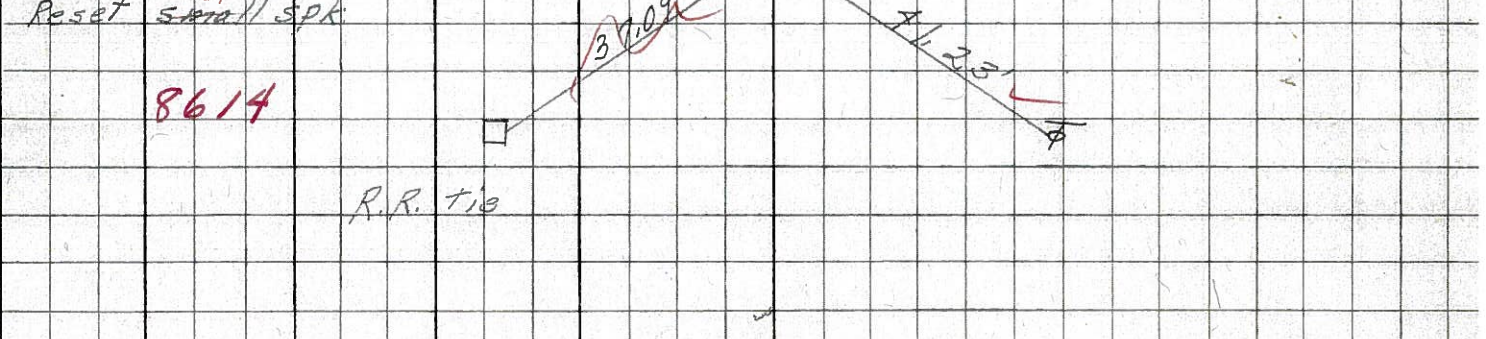
8615

(68)

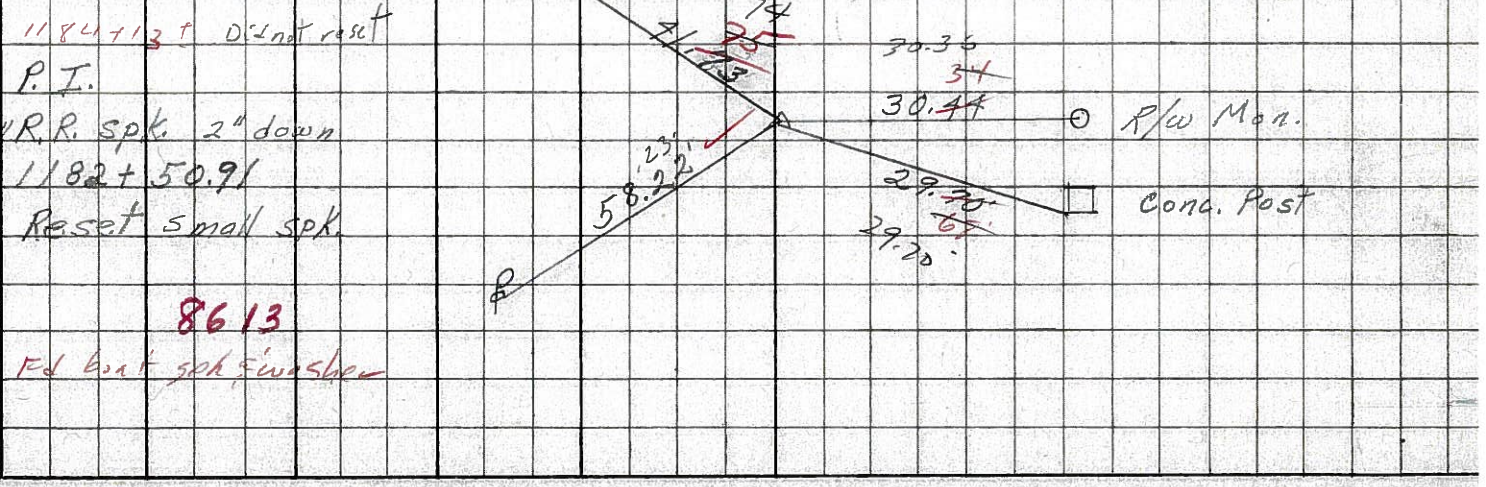


8614

(67)



8613



Ed boat spk. E washer

PERSONNEL TITLE PERSONNEL TITLE

F. Krugbill
J. Kowaleski
D. Brooks

COUNTY Seneca DATE

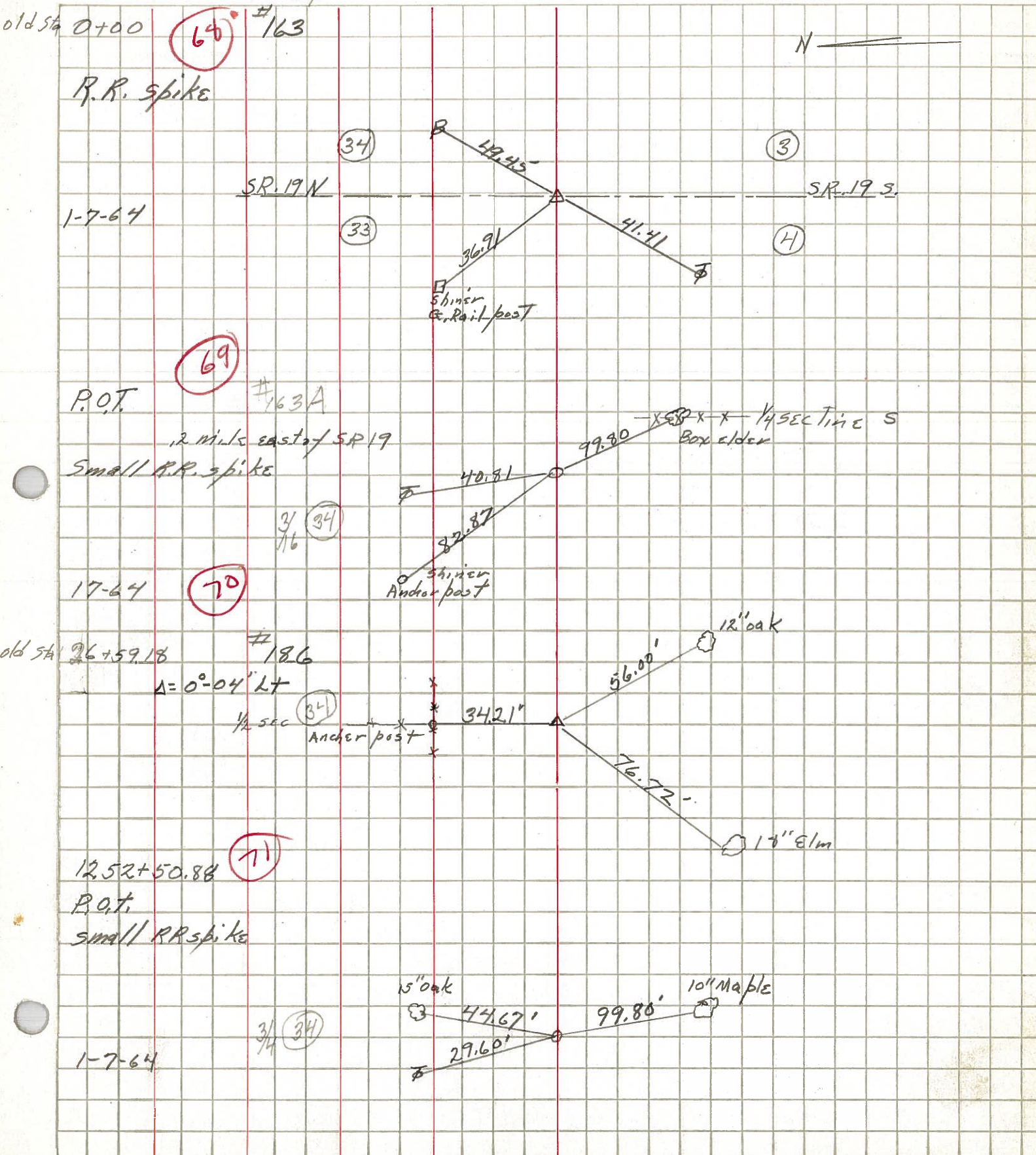
S. R. 224 WEATHER

SEC. TEMP.

DESCRIPTION

Scipio

BLood JOB NO.



PERSONNEL TITLE PERSONNEL TITLE

COUNTY Seneca

DATE checked 10-11-49

S. R. # 224

WEATHER

SEC. G-D-F-E

TEMP.

DESCRIPTION S.H. 272 From intersection of SR#19 to Huron Co. line

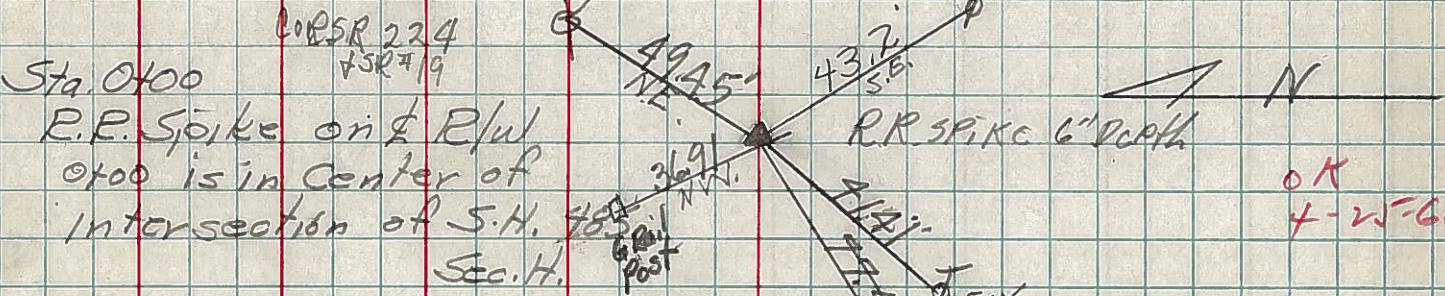
JOB NO.

LEFT

CENTER LINE

RIGHT

68



Sta. 0+00
 P.E. Spike on & R/W
 0+00 is in center of
 intersection of S.H. 272
 Sec. H.

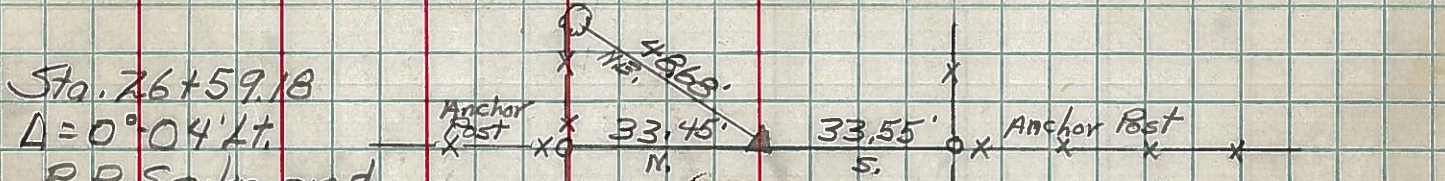
R.R. SPIKE 6" depth

OK
 4-25-60

#163

Iron Pipe in E. End
 of Pump Island.

70

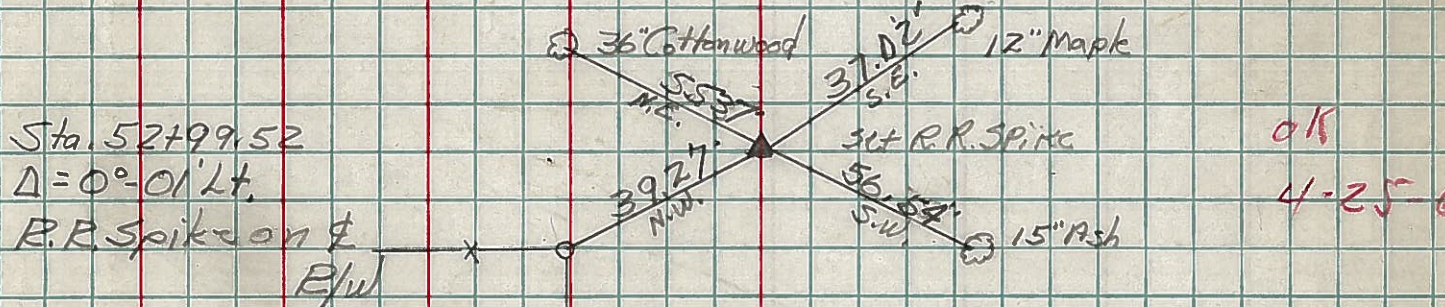


Sta. 26+59.18
 $\Delta = 0^\circ 04' Lt.$
 R.R. Spike on &
 R/W

Did not find
 ties gone

#186

72

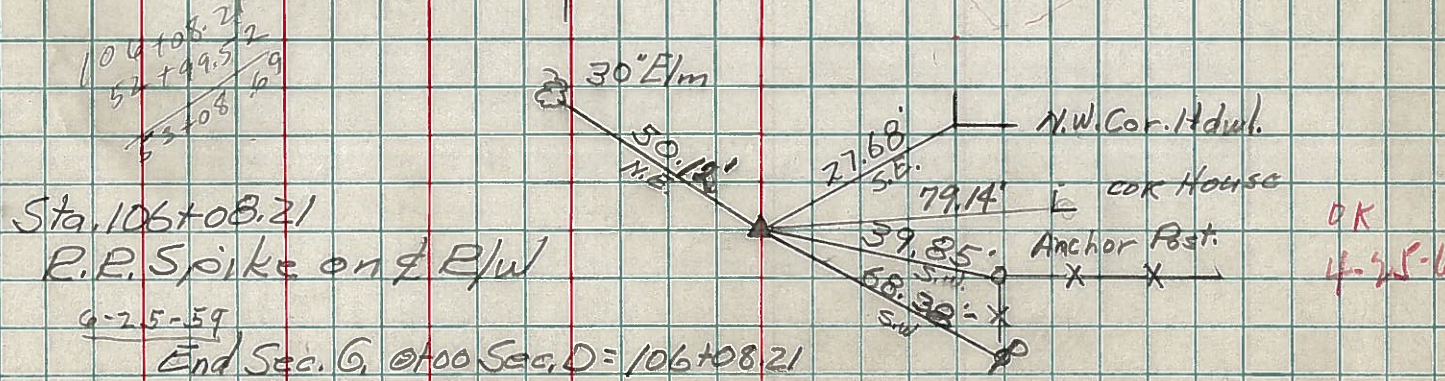


Sta. 52+99.52
 $\Delta = 0^\circ 01' Lt.$
 R.R. Spike on &
 R/W

OK
 4-25-60

#187

73



Sta. 106+08.21
 R.R. Spike on & R/W

OK
 4-25-60

106+08.21
 52+99.52
 53+08.21

End Sec. G @ 100 Sec. D = 106+08.21

#188

Sec. G.