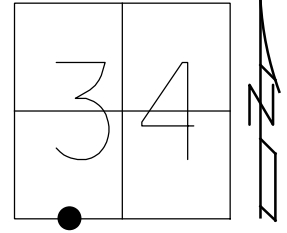


O.D.O.T. DISTRICT 2 SURVEY OFFICE (USE ONLY)

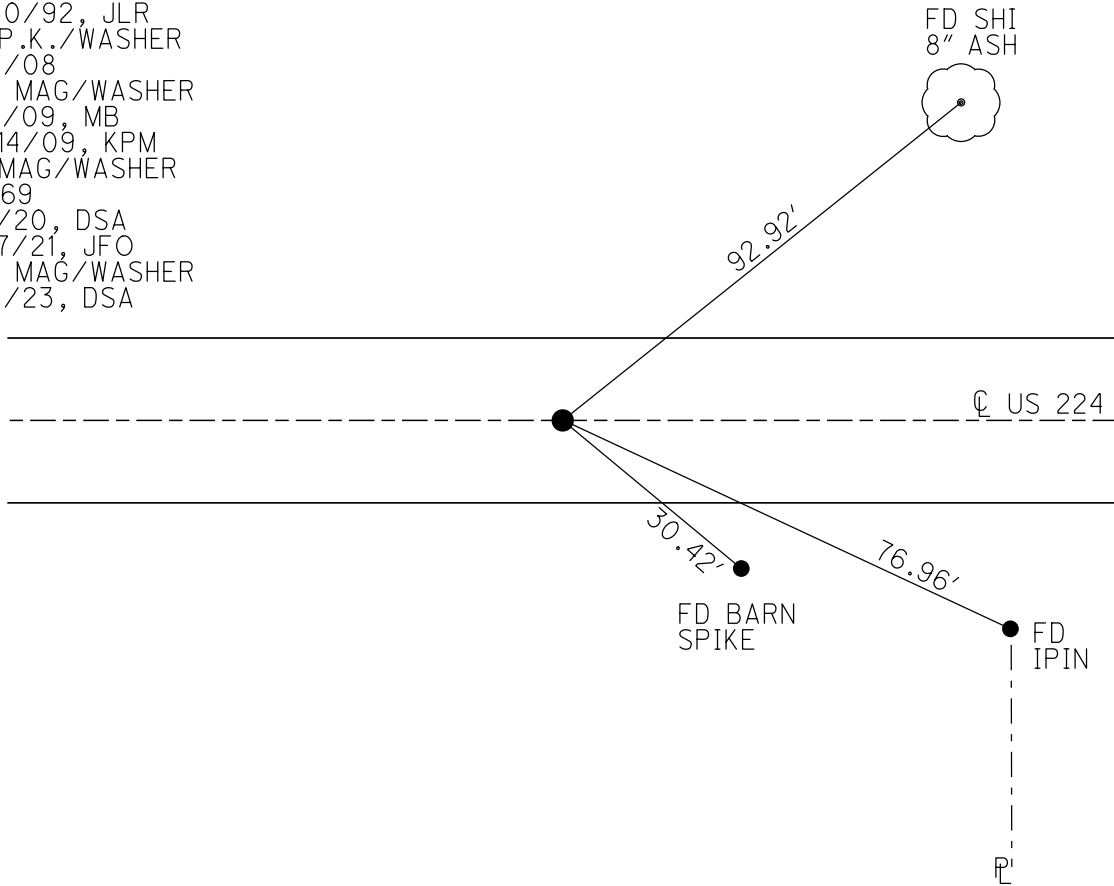
PERSONNEL \_\_\_\_\_ REFERENCE NO. 69 SHEET 12 OF 37  
 NOTES RHOADES DATE 11/7/23 ROUTE US 224  
 H.C. AUBLE WEATHER CLOUDY COUNTY SENECA  
 R.C. ASTON TEMP. 54° TOWNSHIP SCIPIO  
           NIESE SECTION 34  
 DWG BY RHOADES PID 101217 T 2 N R 16 E

TYPE MONUMENT MAG/WASHER  
 ON SURFACE - ~~BELOW~~ ON  
 OFFSET CL PAVEMENT ON LT : RT  
10.7' TO RT EDGE PAVEMENT  
 STATION: 1170+92.85



HORZ. DATUM: NAD83 2011 GEOID: NAVD88 2018  
 GRID: NORTHING: 515752.284 EASTING: 1827706.654

RECORD: P.O.T.  
 STA. 1221+34.86  
 FD BOAT SPIKE/WASHER  
 SET P.K./WASHER  
 10/28/82  
 FD P.K./WASHER  
 6/30/92, JLR  
 SET P.K./WASHER  
 11/30/92, JLR  
 FD P.K./WASHER  
 1/17/08  
 SET MAG/WASHER  
 8/3/09, MB  
 10/14/09, KPM  
 FD MAG/WASHER  
 REF69  
 9/1/20, DSA  
 3/17/21, JFO  
 SET MAG/WASHER  
 11/7/23, DSA



O.D.O.T. DISTRICT 2 SURVEY OFFICE (USE ONLY)

PERSONNEL

REFERENCE NO. 69

SHEET 11 OF 33

NOTES RHOADES

DATE 3/17/21

ROUTE US 224

H.C. O'DONNELL

WEATHER FAIR

COUNTY SENECA

R.C. \_\_\_\_\_

TEMP. 45°

TOWNSHIP SCIPIO

DWG BY NIESE

PID PAVE TRAIN

SECTION 34

T 2 N R 16 E

TYPE MONUMENT MAG/WASHER

ON SURFACE - ~~BELOW~~ ON

OFFSET ☉ PAVEMENT ON LT : RT

10.7' TO RT EDGE PAVEMENT

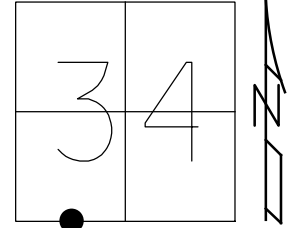
STATION: 1170+92.85

HORZ. DATUM: NAD83 2011

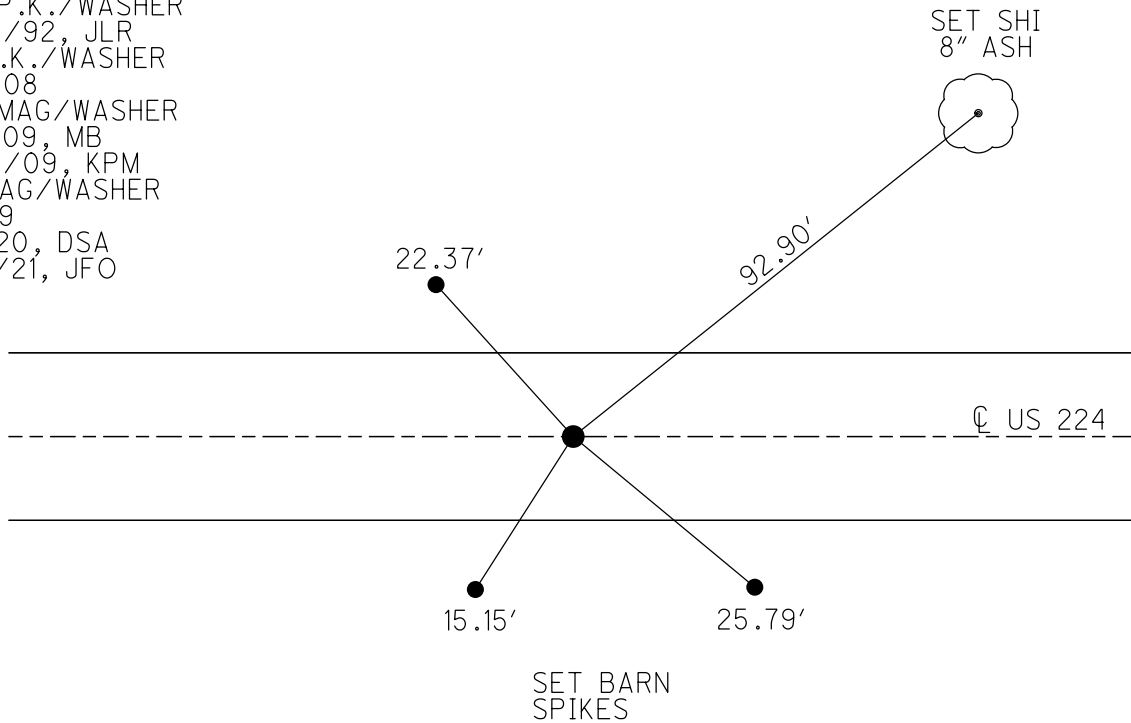
GEOID: NAVD88 2012A

GRID: NORTHING: 515752.315

EASTING: 1827706.557



RECORD: P.O.T.  
 STA. 1221+34.86  
 FD BOAT SPIKE/WASHER  
 SET P.K./WASHER  
 10/28/82  
 FD P.K./WASHER  
 6/30/92, JLR  
 SET P.K./WASHER  
 11/30/92, JLR  
 FD P.K./WASHER  
 1/17/08  
 SET MAG/WASHER  
 8/3/09, MB  
 10/14/09, KPM  
 FD MAG/WASHER  
 REF69  
 9/1/20, DSA  
 3/17/21, JFO



O.D.O.T. DISTRICT 2 SURVEY OFFICE

PERSONNEL

REFERENCE NO. 69

SHEET 10 OF 35

NOTES Moser

DATE 8-3-09

ROUTE U.S. 224

H.C. Moser

WEATHER Fair

COUNTY SENECA

R.C. Pietkowski

TEMP. +40°

TOWNSHIP SCIPIO

Goldberg

SECTION 34

T 2 N R 16 E

TYPE MONUMENT P.K./WASHER

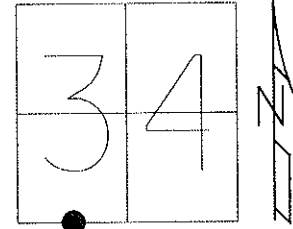
ON SURFACE - ~~BELOW~~ ON

LEFT - ℄ PAV'T - RIGHT ON

10.7' TO RT EDGE PAVEMENT

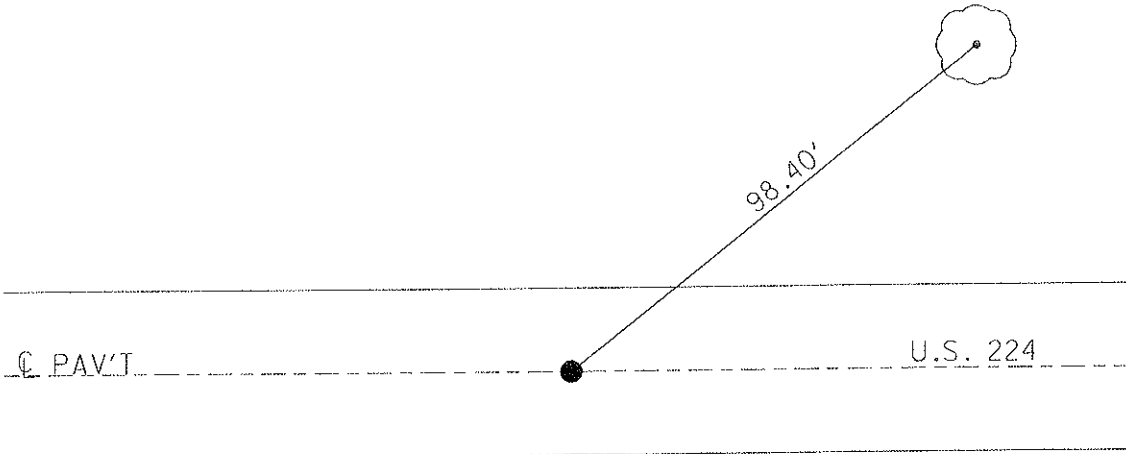
S.L.M. 1170 + 92.85

Grid: Northing: 515752.315 Easting: 1827706.557



RECORD: 10-28-82  
P.O.T. STA 1221+34.86  
SET P.K. & WASHER ATOP  
BOAT SPK. & WASHER

SET NAIL & SHI  
IN 16" ASH  
SW SIDE



FD P.K./WASHER  
6/30/92 JLR

RESET P.K./WASHER  
11/30/92 JLR

FD P.K./WASHER  
1/17/08

SET MAG/WASHER  
8/3/09 MB

RESET MAG/WASHER  
10/14/09 KPM

# O.D.O.T. DISTRICT 2 SURVEY OFFICE

PERSONNEL

REFERENCE NO. 69

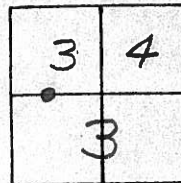
SHEET 8 OF 32

NOTES Cheney  
 H.C. RIPPLE  
 R.C. BARBOUR  
Geyman

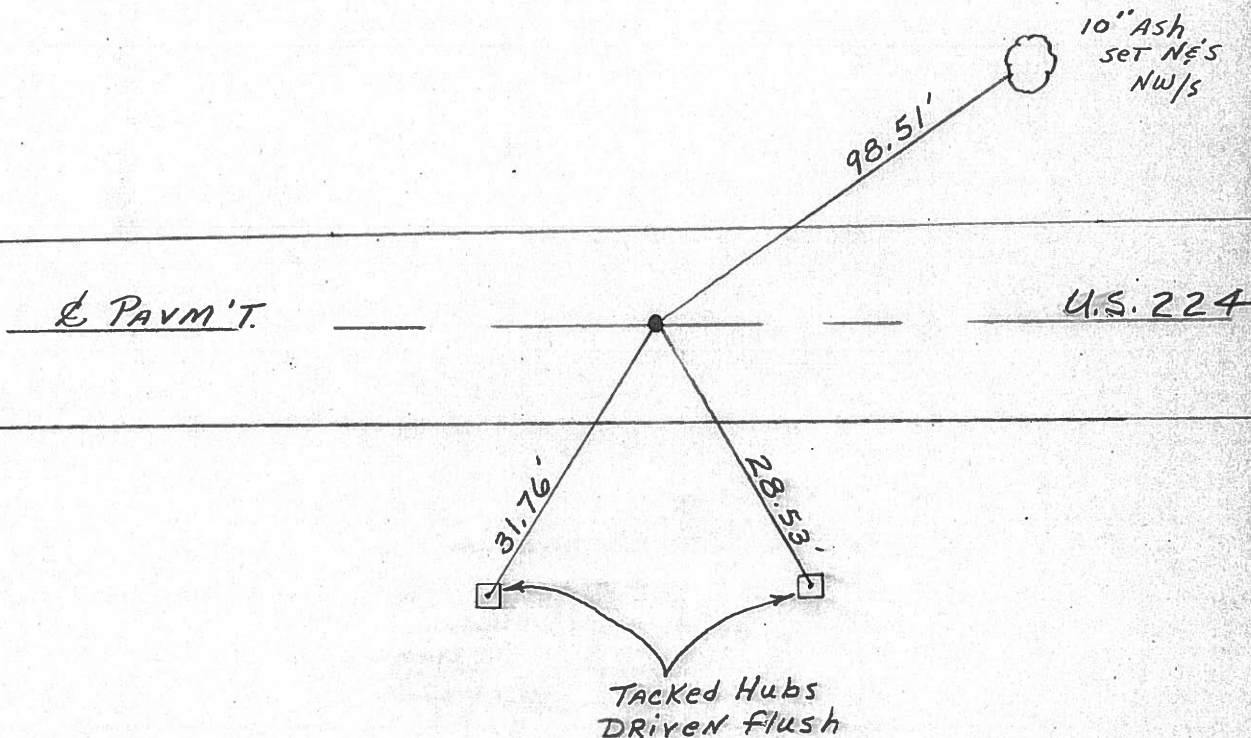
DATE 6-30-92  
 WEATHER Cloudy  
 TEMP. 55°

ROUTE U.S. 224  
 COUNTY Seneca  
 TOWNSHIP Scipio & Bloom  
 SECTION 34 & 3  
 T. 1 N. R. 16 E.

TYPE MONUMENT <sup>6-30-92</sup> F.d. P.K. & Washer Set P.K. & Washer  
11-30-92  
J.C.R.  
 ON SURFACE - ~~BELOW~~ yes  
~~LEFT - & PAV'T. - RIGHT~~ yes  
10' TO RT. EDGE PAVEMENT  
 S.L.M. 1170+50



Record: 10-28-82  
 P.O.T. STA. 1221+34.86  
 SET P.K. & WASHER ATOP  
 BOAT SPK. & WASHER



County Seneca S.R. 224

Date 10/28/82 Drawn 11/02/82

Township Scipio & Bloom

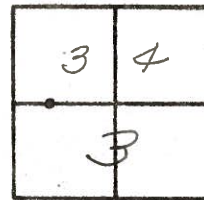
Weather sunny

Section 34 & 3

Temp. 68°

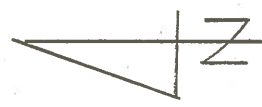
T<sup>2</sup><sub>1</sub>N, R<sup>16</sup><sub>6</sub>E

Personnel Cronin

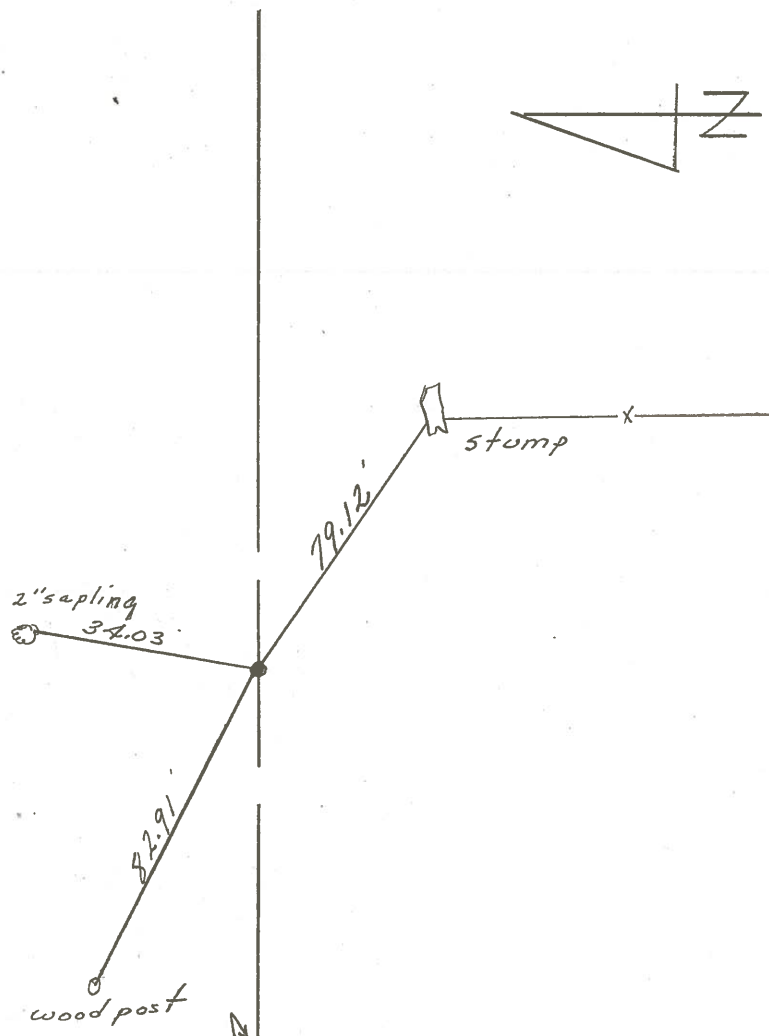


69

Ripple  
Geyman  
Mosser  
Barbour



P.O.T.  
1221 + 3486  
set P.K. washer atop boat  
spike, washer



E.R./W U.S. #2247



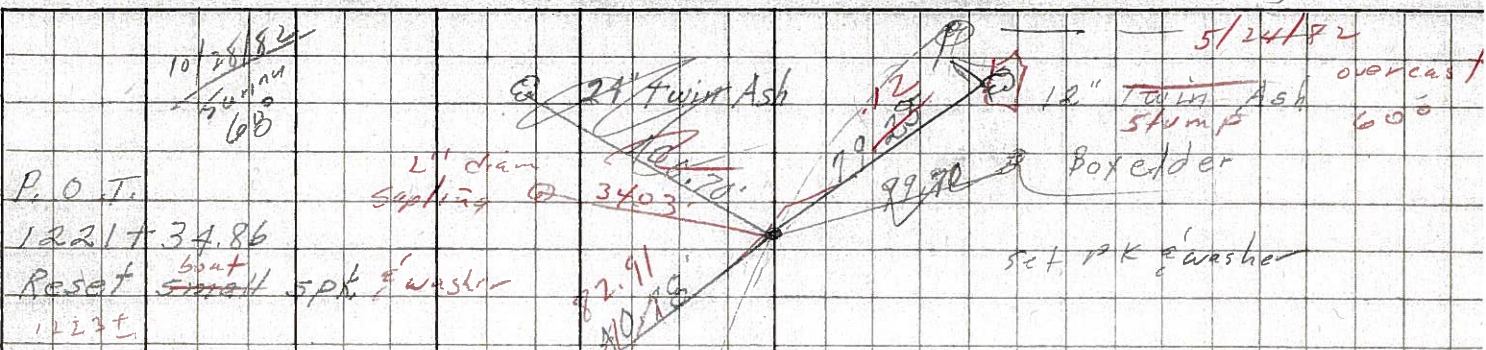
PERSONNEL TITLE PERSONNEL TITLE  
 schneider \_\_\_\_\_  
 Mosser \_\_\_\_\_  
 Barbour \_\_\_\_\_  
 Pott \_\_\_\_\_

COUNTY Seneca DATE 3-25-68  
 S. R. U.S.# 224 WEATHER Fair  
 SEC. SR.#100 to Attica TEMP. 40°

DESCRIPTION Ties for Control Points JOB NO.

LEFT CENTER LINE RIGHT

(69)

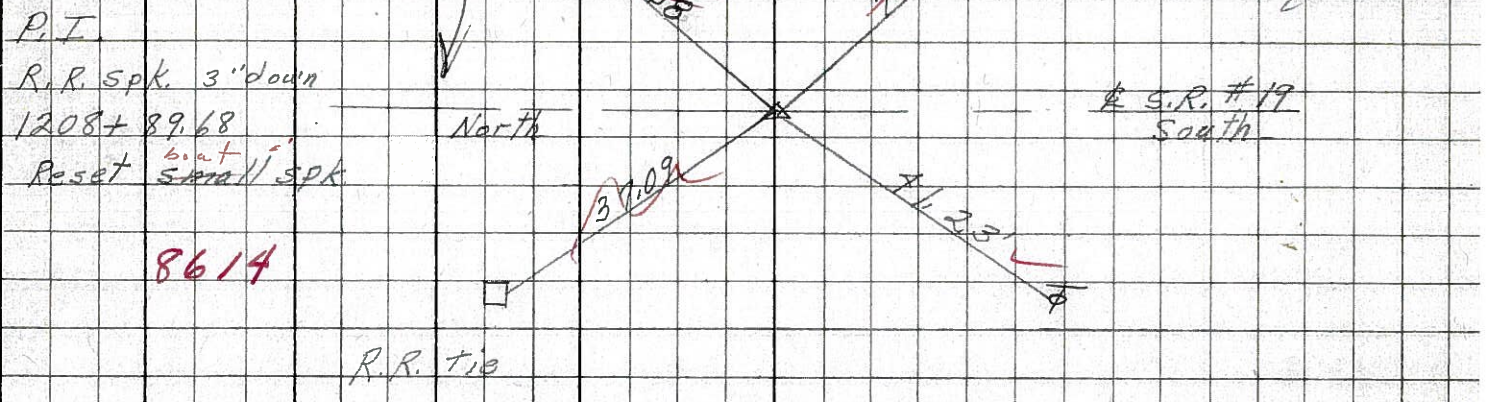


P.O.T.  
 1221+34.86  
 Reset <sup>boat</sup> small spk. washer  
 1223+

8615

11480  
 12445  
 set PK washer  
 2 No. of PK Pkt.

(68)

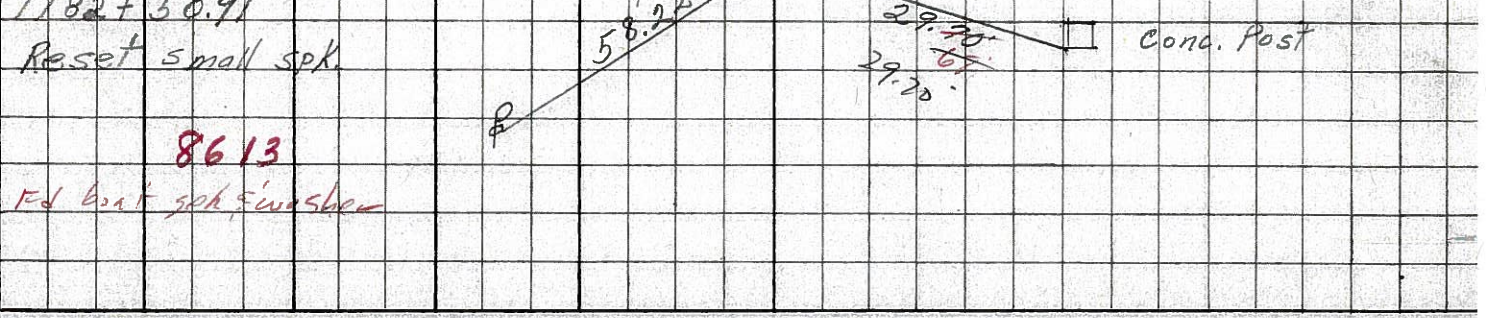


P.T.  
 R.R. spk. 3' down  
 1208+89.68  
 Reset <sup>boat</sup> small spk

8614

R.R. tie

(67)



1184+13+ D. not reset  
 P.T.  
 small R.R. spk. 2" down  
 1182+50.91  
 Reset small spk

8613

Ed boat spk. washer



PERSONNEL TITLE PERSONNEL TITLE

COUNTY Seneca DATE 1-12-66

S. R. U. S. # 224 WEATHER

SEC. TEMP.

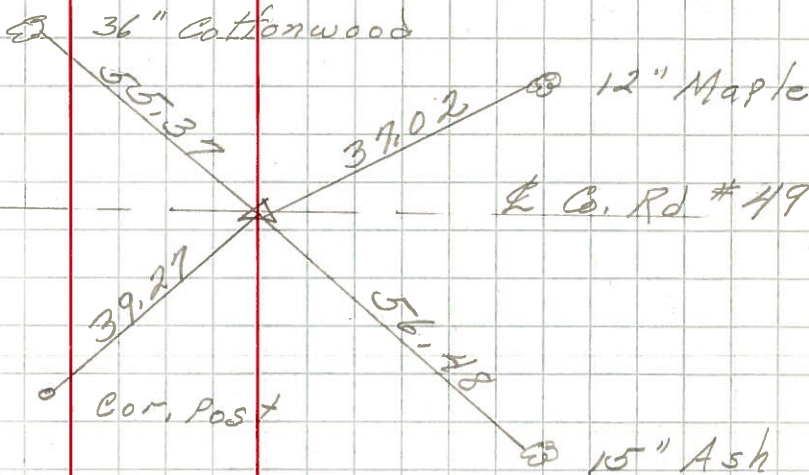
DESCRIPTION From S.R. #19 to Attica JOB NO.

LEFT CENTER LINE RIGHT

72

P.I. 52+99.52  
Δ = 0° 01' Lt.  
R.R. spk. on E R/W

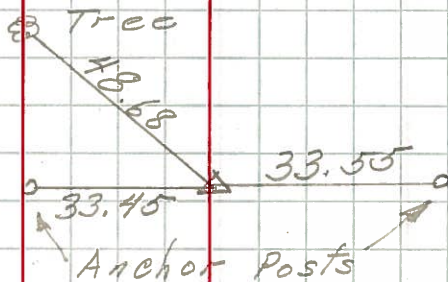
187  
8618



70

P.I. 26+59.18  
Δ = 0° 04' Lt.  
R.R. spk. on E R/W

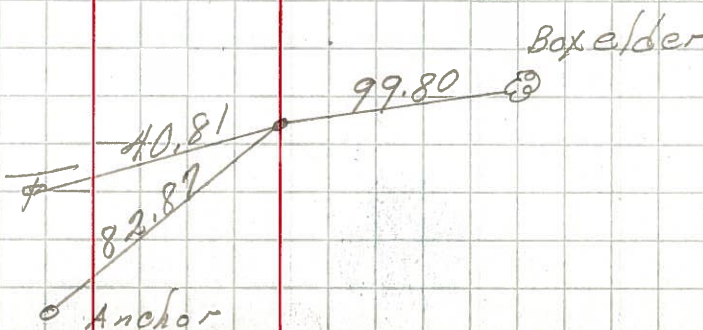
186  
8617



69

P.O.T.  
1221+34.86  
small R.R. spk

8615





PERSONNEL TITLE PERSONNEL TITLE COUNTY Seneca DATE \_\_\_\_\_  
 F. Kragbill \_\_\_\_\_  
 J. Kowaleski \_\_\_\_\_  
 D. Brooks \_\_\_\_\_  
 S. R. 224 WEATHER \_\_\_\_\_  
 SEC. \_\_\_\_\_ TEMP. \_\_\_\_\_

DESCRIPTION Scipio JOB NO. \_\_\_\_\_  
 LEFT CENTER LINE RIGHT

