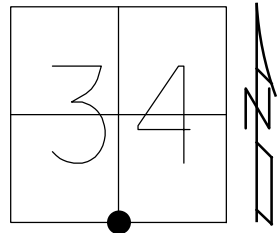


O.D.O.T. DISTRICT 2 SURVEY OFFICE (USE ONLY)

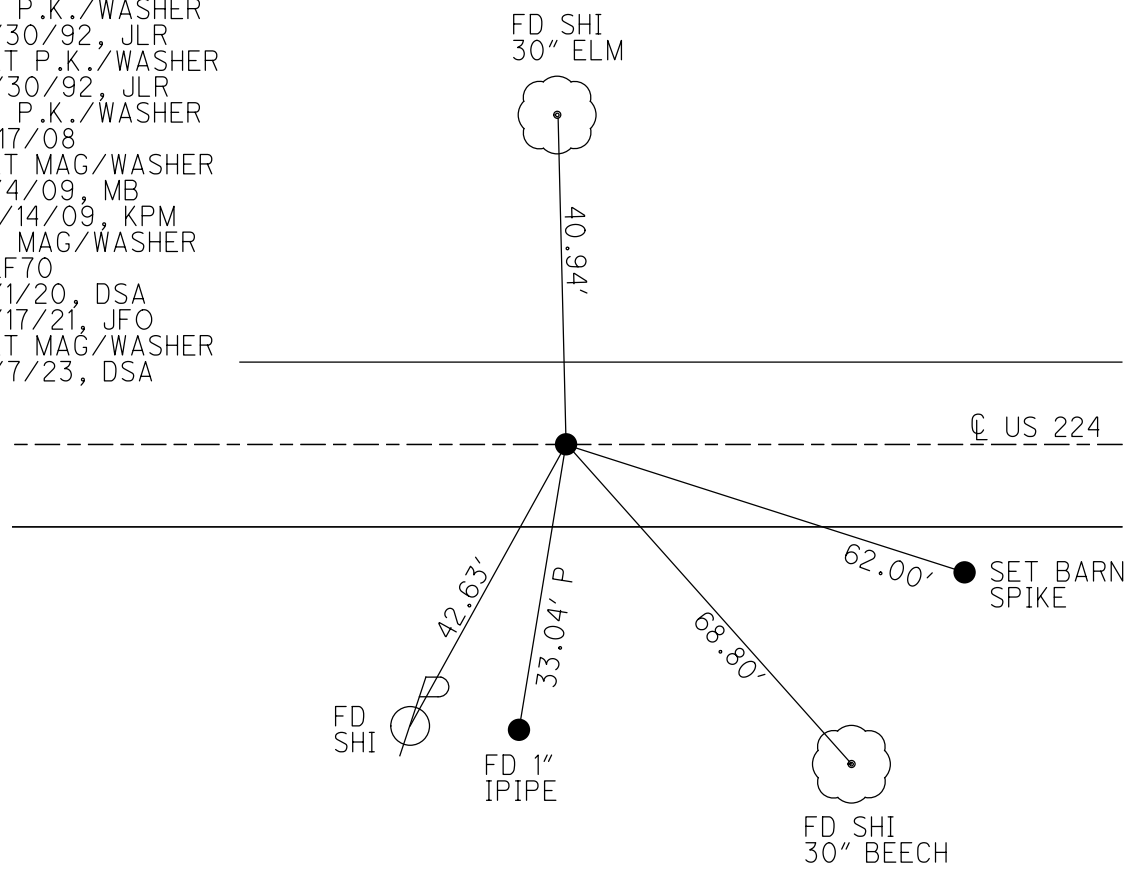
PERSONNEL \_\_\_\_\_ REFERENCE NO. 70 SHEET 13 OF 37  
 NOTES RHOADES DATE 11/7/23 ROUTE US 224  
 H.C. AUBLE WEATHER CLOUDY COUNTY SENECA  
 R.C. ASTON TEMP. 54° TOWNSHIP SCIPIO  
           NIESE SECTION 34  
 DWG BY RHOADES PID 101217 T 2 N R 16 E

TYPE MONUMENT MAG/WASHER  
 ON SURFACE - ~~BELOW~~ ON  
 OFFSET ☉ PAVEMENT 6" LT : ~~RT~~  
9.5' TO LT EDGE PAVEMENT  
 STATION: 1185+05.85



HORZ. DATUM: NAD83 2011 GEOID: NAVD88 2018  
 GRID: NORTHING: 515744.457 EASTING: 1829119.686

RECORD: P.I.  
 STA. 1235+44.68  
 FD BOAT SPIKE/WASHER  
 ATOP R.R. SPIKE  
 SET P.K./WASHER  
 10/28/82  
 FD P.K./WASHER  
 6/30/92, JLR  
 SET P.K./WASHER  
 11/30/92, JLR  
 FD P.K./WASHER  
 1/17/08  
 SET MAG/WASHER  
 8/4/09, MB  
 10/14/09, KPM  
 FD MAG/WASHER  
 REF70  
 9/1/20, DSA  
 3/17/21, JFO  
 SET MAG/WASHER  
 11/7/23, DSA



O.D.O.T. DISTRICT 2 SURVEY OFFICE (USE ONLY)

PERSONNEL

REFERENCE NO. 70

SHEET 12 OF 33

NOTES RHOADES

DATE 3/17/21

ROUTE US 224

H.C. O'DONNELL

WEATHER FAIR

COUNTY SENECA

R.C. \_\_\_\_\_

TEMP. 45°

TOWNSHIP SCIPIO

DWG BY NIESE

PID PAVE TRAIN

SECTION 34

T 2 N R 16 E

TYPE MONUMENT MAG/WASHER

ON SURFACE - ~~BELOW~~ ON

OFFSET 6" LT : ~~RT~~

9.5' TO LT EDGE PAVEMENT

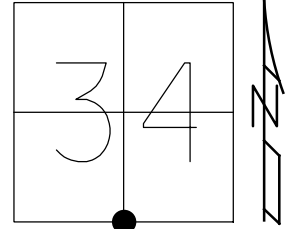
STATION: 1185+05.85

HORIZ.DATUM: NAD83 2011

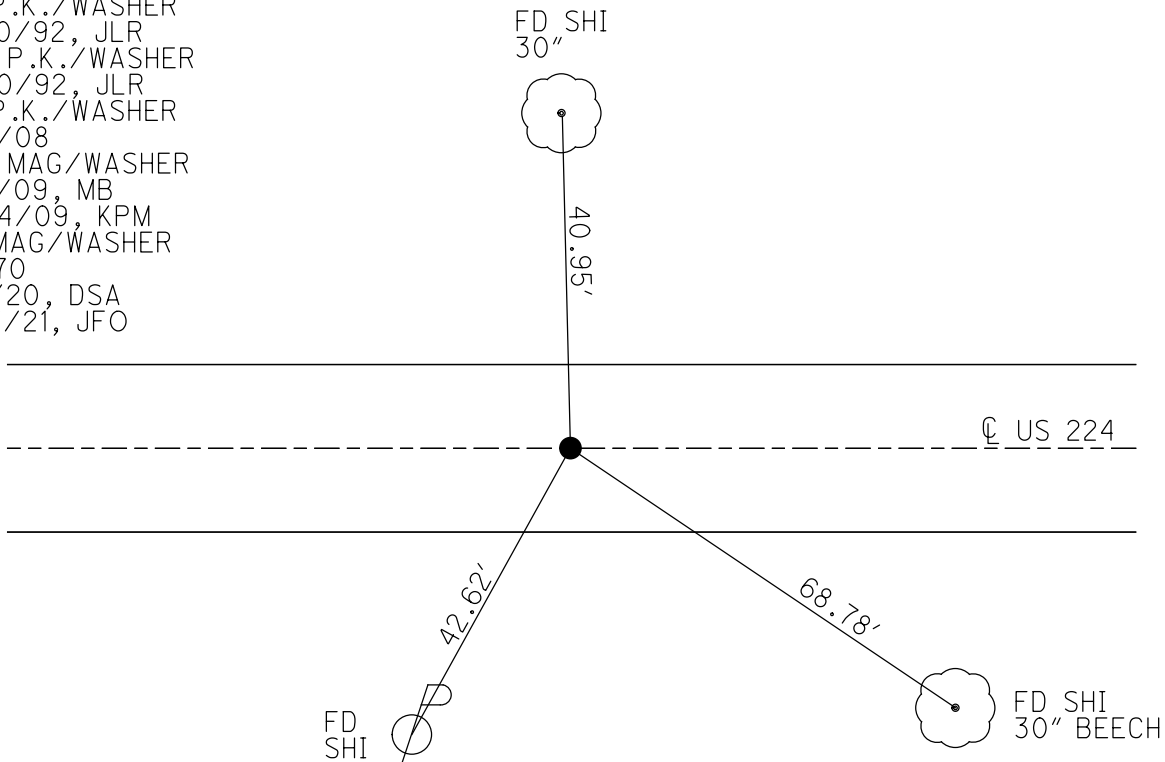
GEOID: NAVD88 2012A

GRID: NORTHING: 515744.448

EASTING: 1829119.587



RECORD: P.I.  
 STA. 1235+44.68  
 FD BOAT SPIKE/WASHER  
 ATOP R.R.SPIKE  
 SET P.K./WASHER  
 10/28/82  
 FD P.K./WASHER  
 6/30/92, JLR  
 SET P.K./WASHER  
 11/30/92, JLR  
 FD P.K./WASHER  
 1/17/08  
 SET MAG/WASHER  
 8/4/09, MB  
 10/14/09, KPM  
 FD MAG/WASHER  
 REF70  
 9/1/20, DSA  
 3/17/21, JFO



# O.D.O.T. DISTRICT 2 SURVEY OFFICE

PERSONNEL \_\_\_\_\_

REFERENCE NO. 70

SHEET 11 OF 35

NOTES Moser

DATE 8-4-09

ROUTE U.S. 224

H.C. Moser

WEATHER Fair

COUNTY SENECA

R.C. Pietkowski

TEMP. +40°

TOWNSHIP SCIPIO

Goldberg

SECTION 34

T. 2 N R. 16 E

TYPE MONUMENT P.K./WASHER

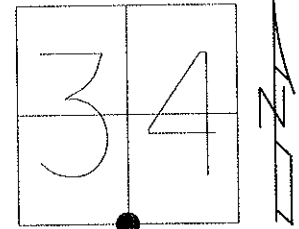
ON SURFACE - ~~BELOW~~ ON

LEFT - Q PAV'T - ~~RIGHT~~ 1'

9.5' TO LT. EDGE PAVEMENT

S.L.M. 1185 + 05.85

Grid: Northing: 515744.448 Easting: 1829119.587



Record:

PI-STA: 1235 + 44.68  
 SET PK + WASHER ATOP  
 BOAT SPIKE + WASHER ATOP  
 R.R. SPK.

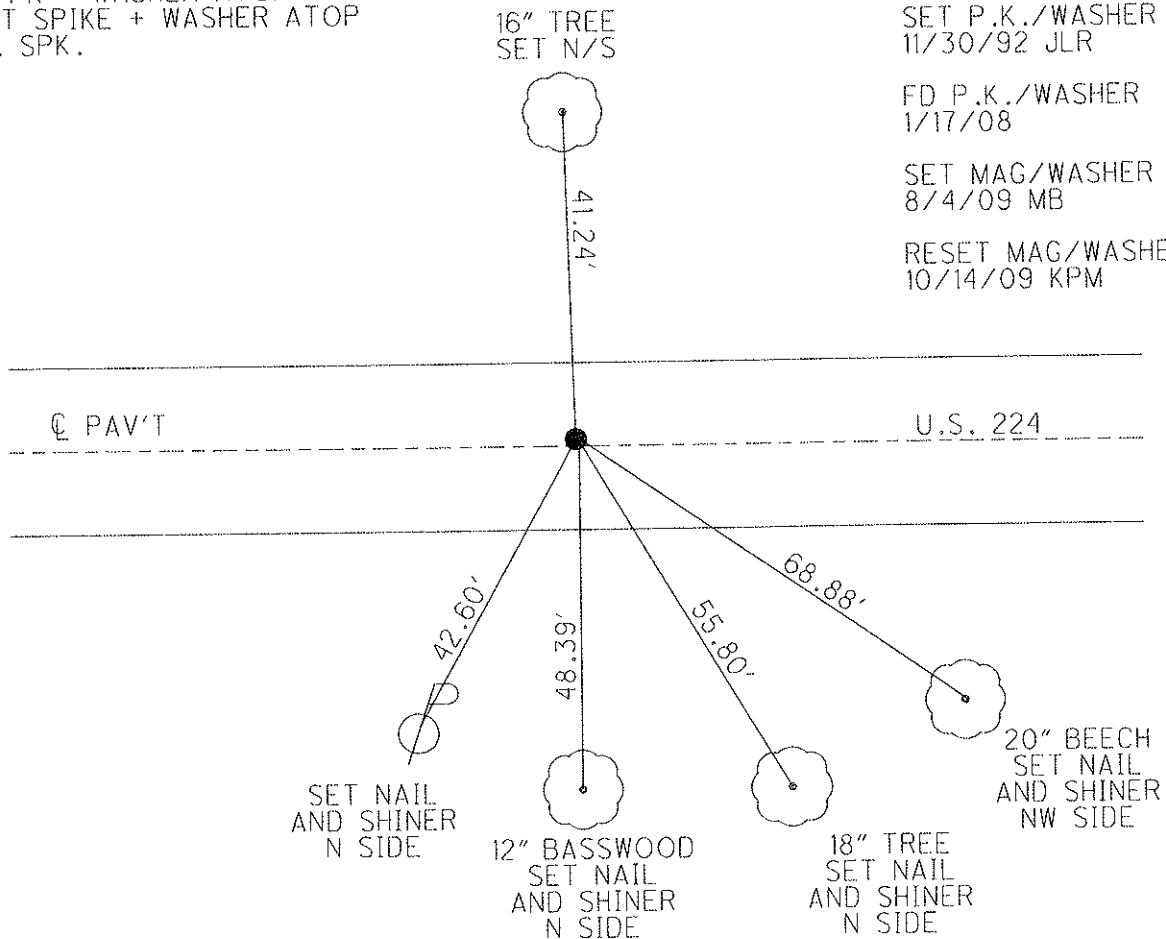
FD P.K./WASHER  
 6/30/92 JLR

SET P.K./WASHER  
 11/30/92 JLR

FD P.K./WASHER  
 1/17/08

SET MAG/WASHER  
 8/4/09 MB

RESET MAG/WASHER  
 10/14/09 KPM



# O.D.O.T. DISTRICT 2 SURVEY OFFICE

PERSONNEL

REFERENCE NO. 70

SHEET 9 OF 32

NOTES Cheney

H.C. Ripple

R.C. BARBOUR

Geyman

DATE 6-30-92

WEATHER Cloudy

TEMP. 55°

ROUTE U.S. 224

COUNTY Seneca

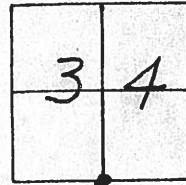
TOWNSHIP Scipio

SECTION 34

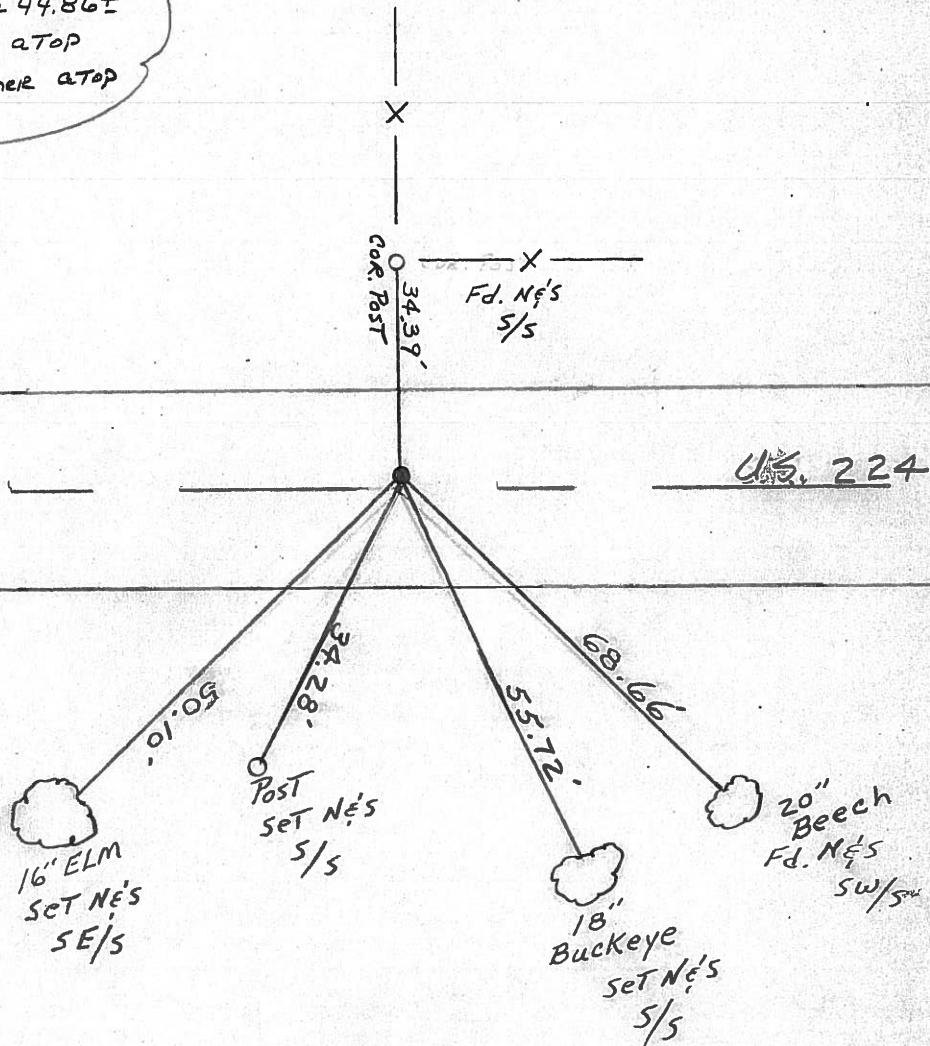
T 2 N R 16 E

TYPE MONUMENT <sup>6-30-92</sup> Fd. P.K. Washer - Set P.K. Washer  
 ON SURFACE - ~~BELOW~~ yes  
 LEFT- &lt;math>C</math> PAV'T. - ~~RIGHT~~ 1'  
9' TO LT. EDGE PAVEMENT  
 S.L.M. 1184+63

SET P.K. WASHER  
 11-30-92  
 J.L.R.



RECORD:  
 PI - STA: 1235+44.86±  
 SET PK + WASHER ATOP  
 BOAT SPIKE + WASHER ATOP  
 R.R. SPK.



County Seneca S.R. 224

Township Scipio

Section 34

T2N, R16E

Personnel Cronin

Ripple

Geyman

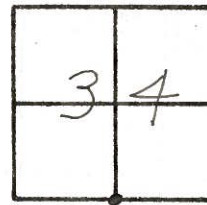
Messer

Barbour

Date 10/28/82 Drawn 11/02/82

Weather sunny

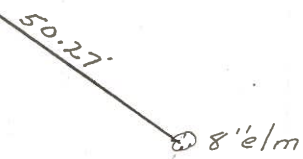
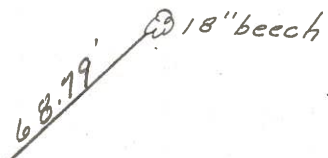
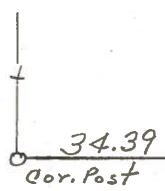
Temp. 68°



70



P.I.  
1235 + 44.86 ±  
set P.K. & washer atop  
boat spike & washer atop  
R.R. spike



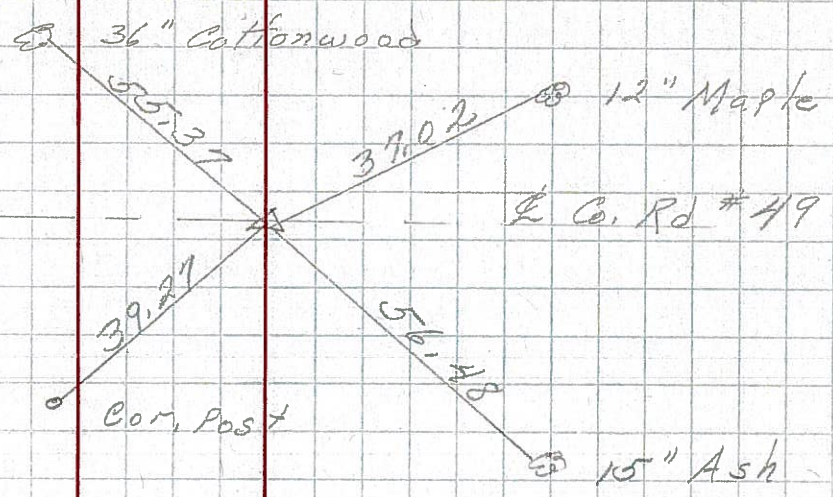
R.R/W U.S. # 2247

PERSONNEL	TITLE	PERSONNEL	TITLE	COUNTY	DATE	WEATHER	TEMP.	JOB NO.
				Seneca	1-12-66			
				S. R. U.S. # 224				
				SEC.				
DESCRIPTION				From S.R. #19 to Attica				
	LEFT		CENTER LINE		RIGHT			

72

P.I. 52+99.52  
 $\Delta = 00 01' \text{ Lt.}$   
 R.R. spk. on & R/W

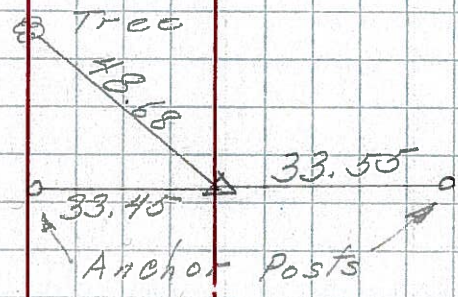
187  
 8618



70

P.I. 26+59.18  
 $\Delta = 0 04' \text{ Rt.}$   
 R.R. spk. on & R/W

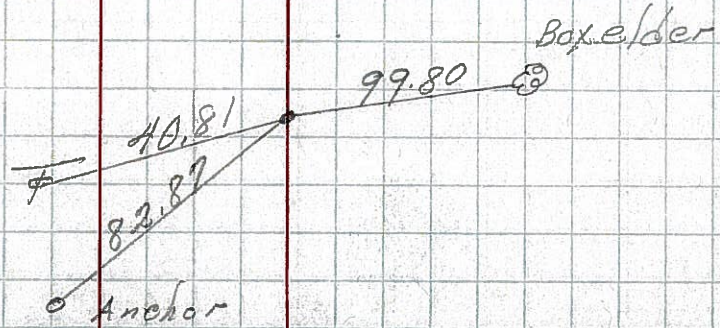
186  
 8617



69

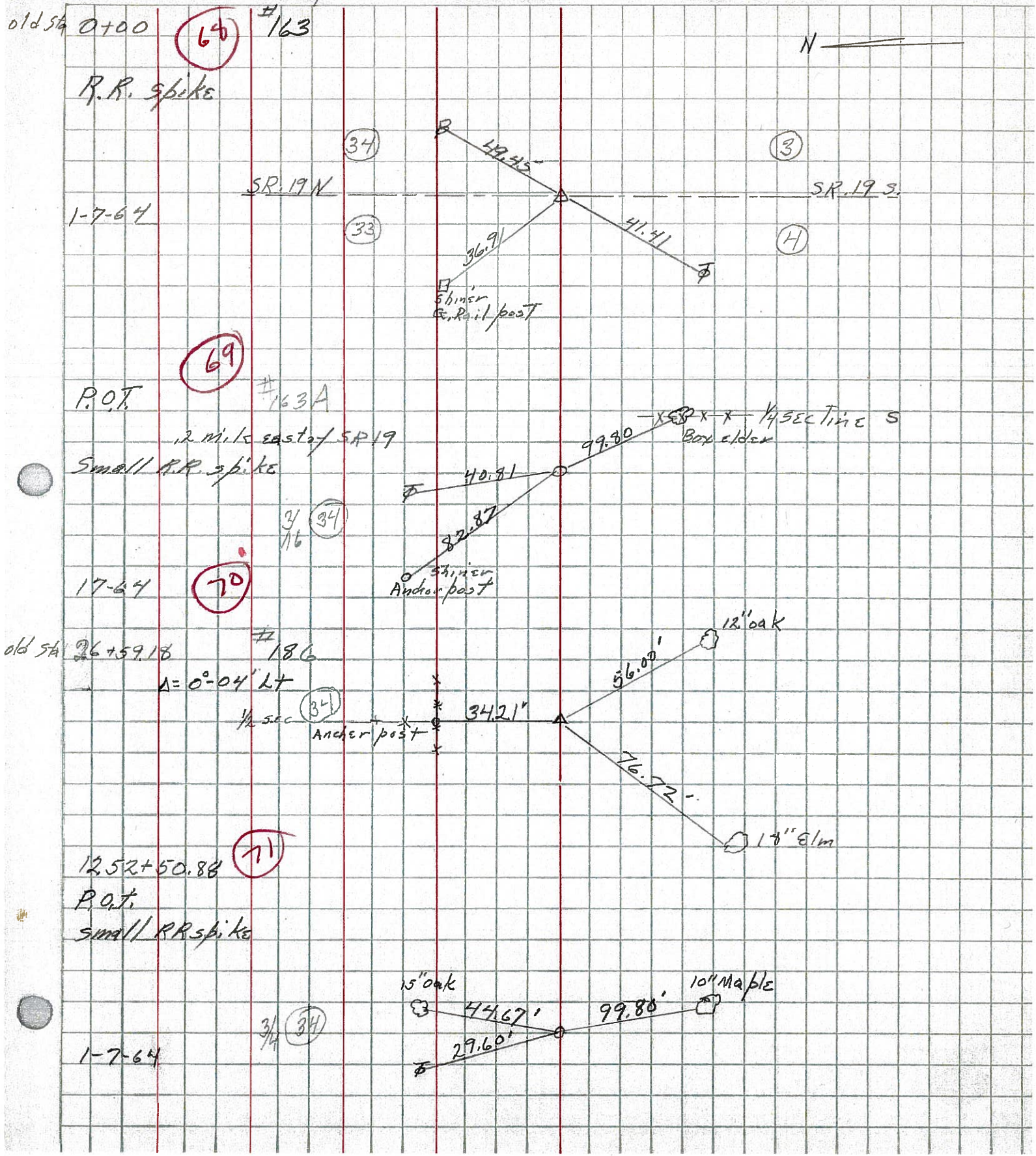
P.O.T  
 12 21 + 34.86  
 small R.R. spk

8615



PERSONNEL TITLE PERSONNEL TITLE COUNTY Seneca DATE \_\_\_\_\_  
 F. Kraeger / J. Kowaleski / D. Brooks S. R. 224 WEATHER \_\_\_\_\_  
 SEC. \_\_\_\_\_ TEMP. \_\_\_\_\_

DESCRIPTION Scipio LEFT CENTER LINE RIGHT Blond JOB NO. \_\_\_\_\_



PERSONNEL TITLE PERSONNEL TITLE

COUNTY Seneca

DATE checked 10-11-49

S. R. # 224

WEATHER

SEC. G-D-F-E

TEMP.

DESCRIPTION S.H. 272 From intersection of SR#19 to Huron Co. line

JOB NO.

LEFT

CENTER LINE

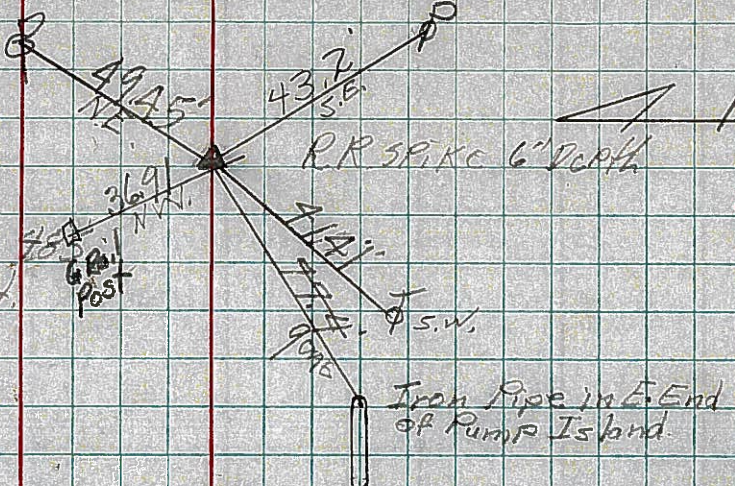
RIGHT

68

Sta. 0+00  
P.P. Spike on & R/W  
0+00 is in center of  
intersection of S.H. 272  
Sec. H.

SR 224  
SR 19

#163

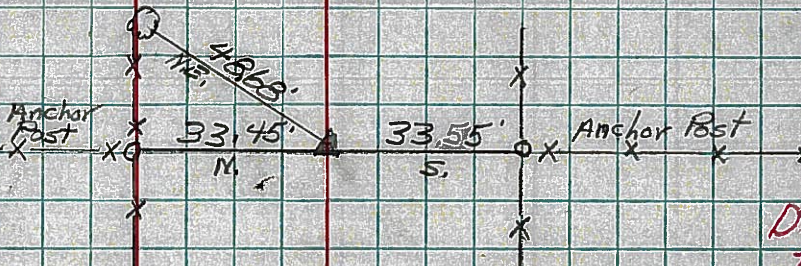


OK  
4-25-60

70

Sta. 26+59.18  
 $\Delta = 0^{\circ}04' Lt.$   
P.P. Spike on & R/W

#186

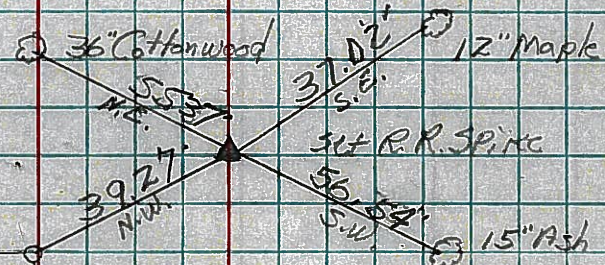


Did not find  
Ties gone

72

Sta. 52+99.52  
 $\Delta = 0^{\circ}01' Lt.$   
P.P. Spike on & R/W

#187



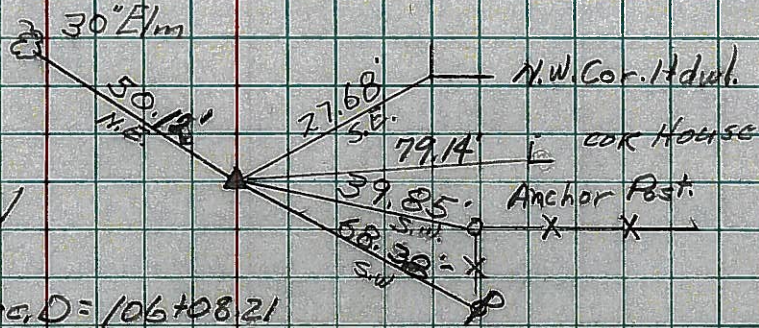
OK  
4-25-60

106+08.21  
52+99.52  
52+08.21

73

Sta. 106+08.21  
P.P. Spike on & R/W

#188



OK  
4-25-60

End Sec. G, 0+00 Sec. D = 106+08.21

Sec. G