

O.D.O.T. DISTRICT 2 SURVEY OFFICE (USE ONLY)

PERSONNEL

REFERENCE NO. 71

SHEET 14 OF 37

NOTES RHOADES

DATE 11/7/23

ROUTE US 224

H.C. AUBLE

WEATHER CLOUDY

COUNTY SENECA

R.C. ASTON

TEMP. 54°

TOWNSHIP SCIPIO

NIESE

SECTION 34

DWG BY RHOADES

PID 101217

T 2 N R 16 E

TYPE MONUMENT MAG/WASHER

ON SURFACE - ~~BELOW~~ ON

OFFSET \odot PAVEMENT ON LT : RT

10.2' TO RT EDGE PAVEMENT

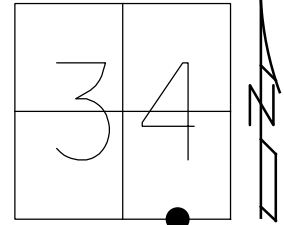
STATION: 1200+26.26

HORZ.DATUM: NAD83 2011

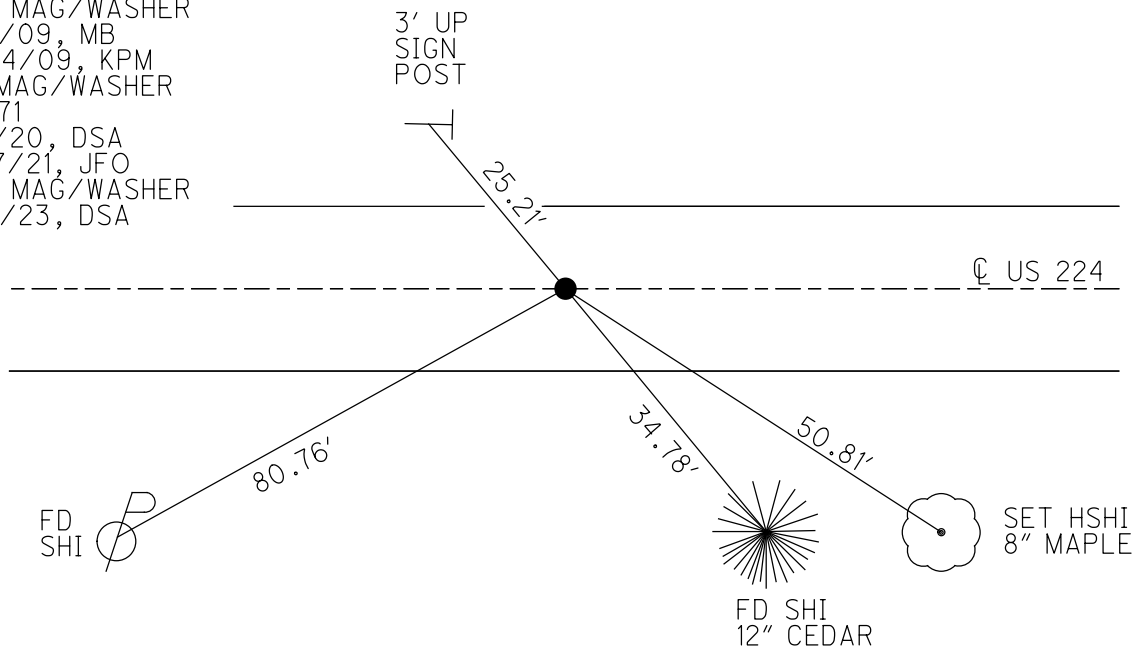
GEOID: NAVD88 2018

GRID: NORTHING: 515738.435

EASTING: 1830639.979



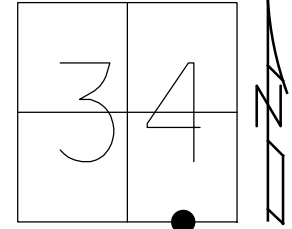
RECORD: P.O.T.
 STA.1252+50.88
 FD BOAT SPIKE/WASHER
 ATOP R.R.SPIKE
 SET P.K./WASHER
 10/28/82
 FD P.K./WASHER
 6/30/92, JLR
 SET P.K./WASHER
 11/30/92, JLR
 FD P.K./WASHER
 1/17/08
 SET MAG/WASHER
 8/4/09, MB
 10/14/09, KPM
 FD MAG/WASHER
 REF71
 9/1/20, DSA
 3/17/21, JFO
 SET MAG/WASHER
 11/7/23, DSA



O.D.O.T. DISTRICT 2 SURVEY OFFICE (USE ONLY)

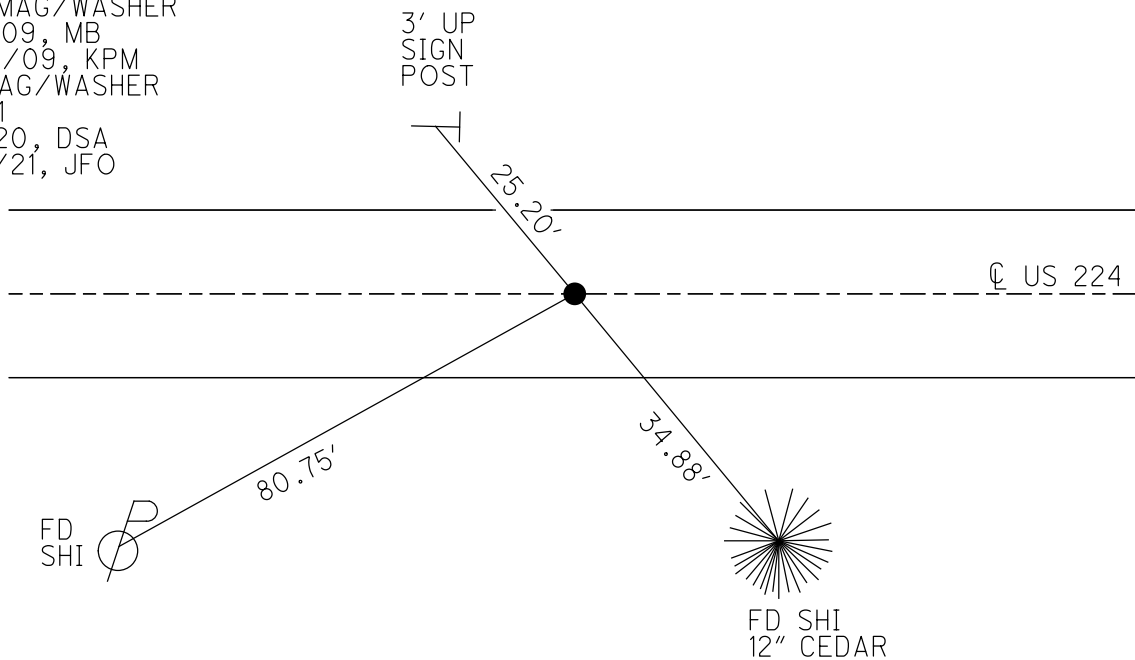
PERSONNEL _____ REFERENCE NO. 71 SHEET 13 OF 33
 NOTES RHOADES DATE 3/17/21 ROUTE US 224
 H.C. O'DONNELL WEATHER FAIR COUNTY SENECA
 R.C. _____ TEMP. 45° TOWNSHIP SCIPIO
 _____ SECTION 34
 DWG BY NIESE PID PAVE TRAIN T 2 N R 16 E

TYPE MONUMENT MAG/WASHER
 ON SURFACE - ~~BELOW~~ ON
 OFFSET C PAVEMENT ON LT : RT
10.2' TO RT EDGE PAVEMENT
 STATION: 1200+26.26



HORZ.DATUM: NAD83 2011 GEOID: NAVD88 2012A
 GRID: NORTHING: 515738.447 EASTING: 1830639.938

RECORD: P.O.T.
 STA.1252+50.88
 FD BOAT SPIKE/WASHER
 ATOP R.R.SPIKE
 SET P.K./WASHER
 10/28/82
 FD P.K./WASHER
 6/30/92, JLR
 SET P.K./WASHER
 11/30/92, JLR
 FD P.K./WASHER
 1/17/08
 SET MAG/WASHER
 8/4/09, MB
 10/14/09, KPM
 FD MAG/WASHER
 REF71
 9/1/20, DSA
 3/17/21, JFO



O.D.O.T. DISTRICT 2 SURVEY OFFICE

PERSONNEL

REFERENCE NO. 71

SHEET 12 OF 35

NOTES Moser

DATE 8-4-09

ROUTE U.S. 224

H.C. Moser

WEATHER Fair

COUNTY SENECA

R.C. Pietkowski

TEMP. +40°

TOWNSHIP SCIPIO

Goldberg

SECTION 34

T 2 N R 16 E

TYPE MONUMENT P.K./WASHER

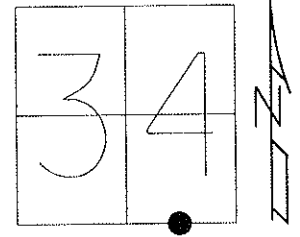
ON SURFACE - ~~BELOW~~ ON

LEFT - ☉ PAV'T - RIGHT ON

10.2' TO RT. EDGE PAVEMENT

S.L.M. 1200 + 26.26

Grid: Northing: 515738.447 Easting: 1830639.938



RECORD: 10-28-82
 P.O.T. STA. 1252+50.88
 SET P.K. & WASHER ATOP
 BOAT SPK. & WASHER ATOP
 R.R. SPK.

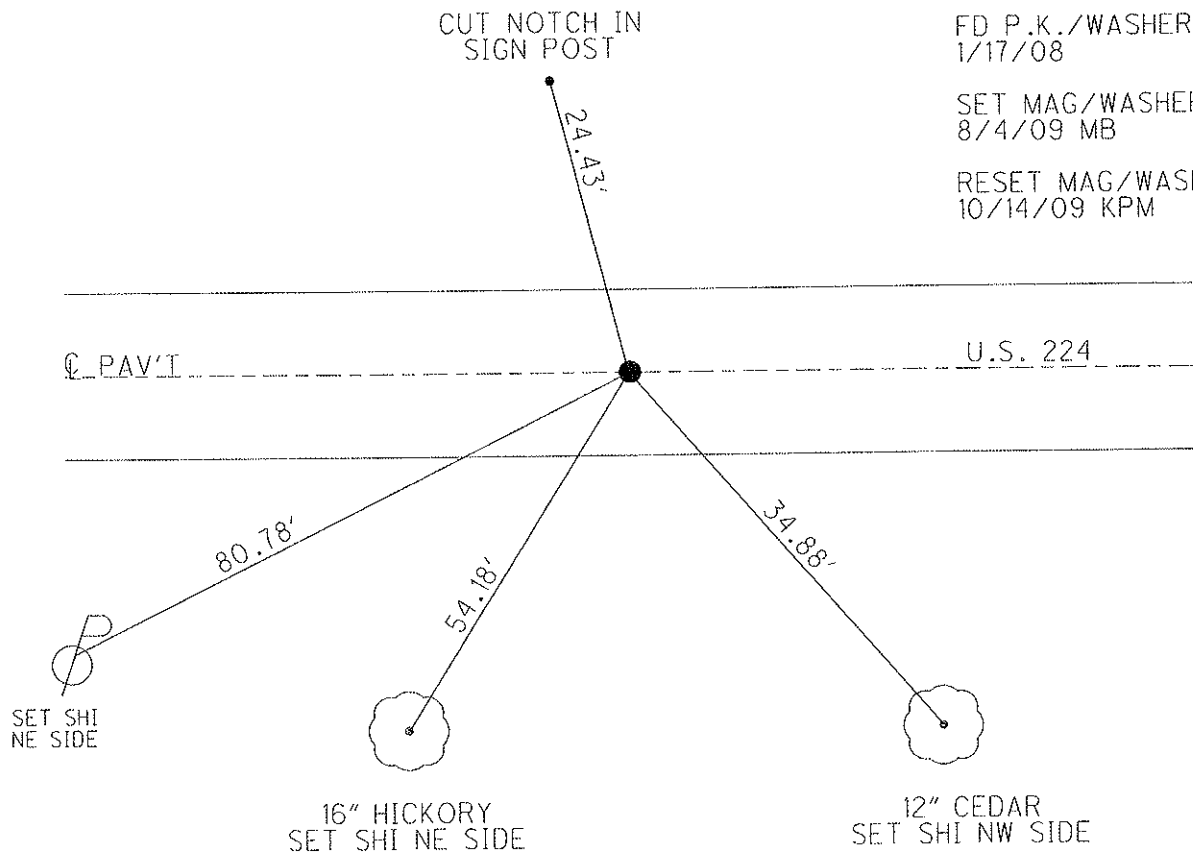
FD P.K./WASHER
 6/30/92 JLR

SET P.K./WASHER
 11/30/92 JLR

FD P.K./WASHER
 1/17/08

SET MAG/WASHER
 8/4/09 MB

RESET MAG/WASHER
 10/14/09 KPM



O.D.O.T. DISTRICT 2 SURVEY OFFICE

PERSONNEL

REFERENCE NO. 71

SHEET 10 OF 32

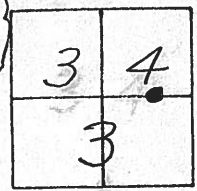
NOTES Cheney
 H.C. RIPPLE
 R.C. BARBOUR
Geyman

DATE 6-30-92
 WEATHER Cloudy
 TEMP. 55°

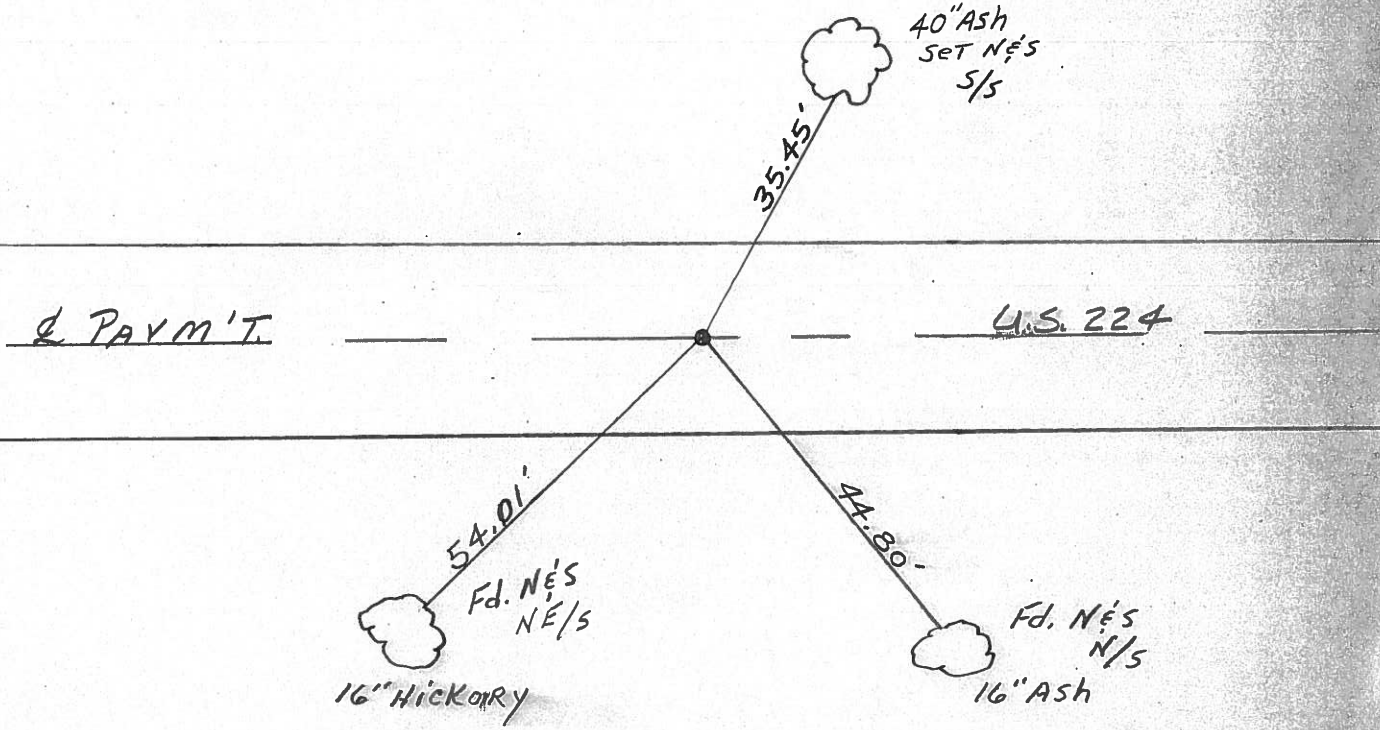
ROUTE U.S. 224
 COUNTY Seneca
 TOWNSHIP Scipio & Bloom
 SECTION 34 & 3
T 2 N R 16 E

TYPE MONUMENT ⁶⁻³⁰⁻⁹² Fd. P.K. & washer ^{set P.K. & washer}
 ON SURFACE - BELOW yes ¹¹⁻³⁰⁻⁹²
~~LEFT~~ - ~~C~~ PAV'T. - ~~RIGHT~~ yes
10' TO RT. EDGE PAVEMENT
 S.L.M. 1199+83

*set P.K. & washer
11-30-92
J.L.R.*



*Record: 10-28-82
 P.O.T. STA. 1252+50.88
 SET P.K. & WASHER AT TOP
 BOAT SPK. & WASHER AT TOP
 R.R. SPK.*



County Seneca S.R. 224

Date 10/28/82 Drawn 11/02/82

Township Scipio & Bloom

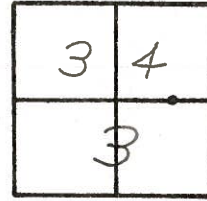
Weather sunny

Section 34 E 3

Temp. 68°

T²/₄N, R¹⁶/₆E

Personnel Cronin

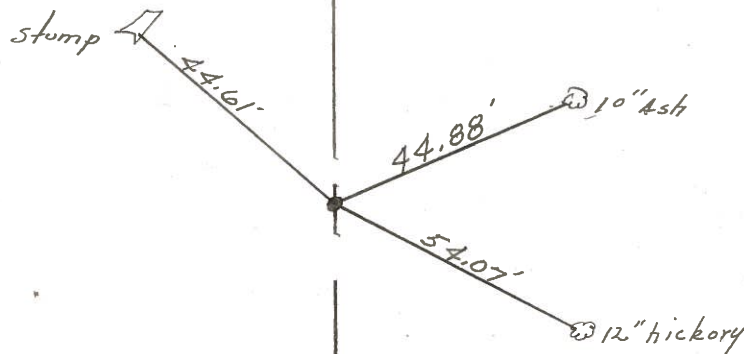


71

Ripple
Geyman
Mosser
Barbour



P.O.T.
1252 + 50.88
set P.K. & washer atop boat
spike & washer atop R.L. spike

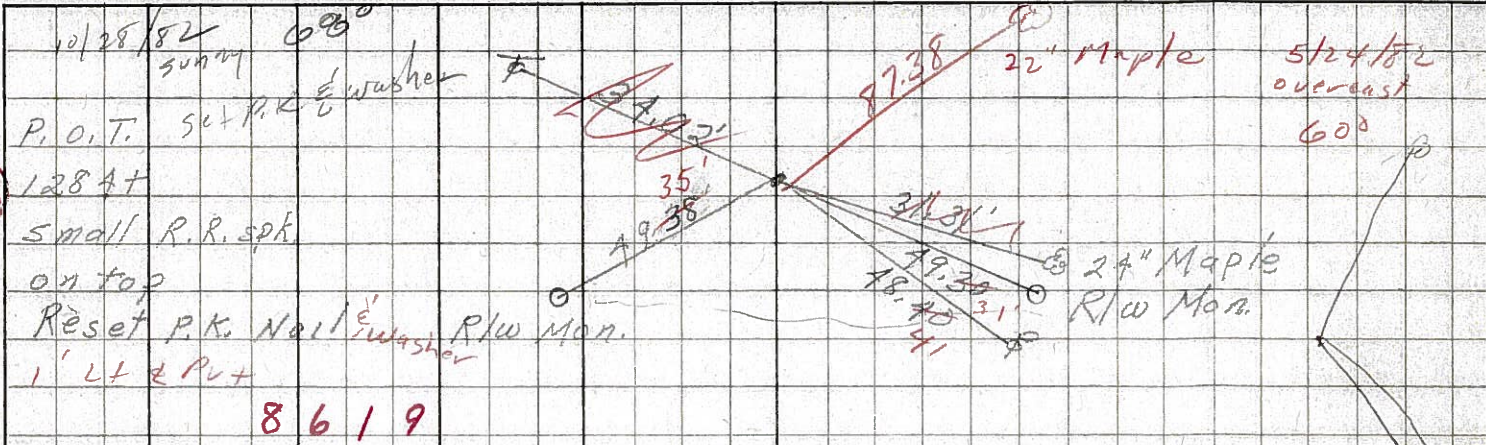


E.P./W U.S. # 2247

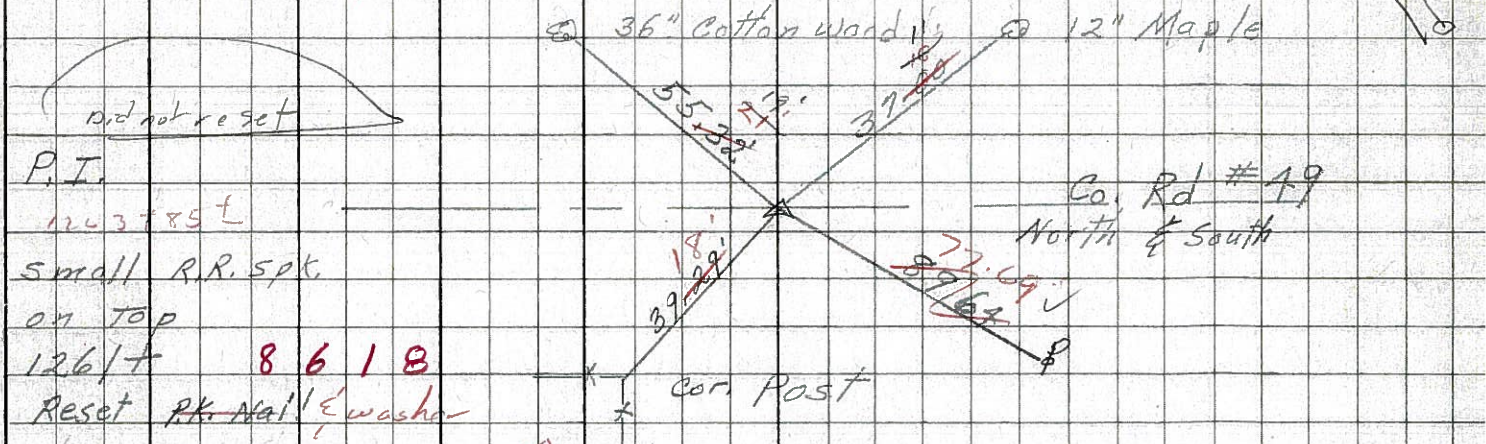
PERSONNEL	TITLE	PERSONNEL	TITLE	COUNTY	DATE	WEATHER	TEMP.
Schneider		Potts		Seneca	3-29-68	Fair	60°
Mosser				S. R. U.S. # 22A			
Barbour				SEC. S.R. #100 to Attica			
Redding							

DESCRIPTION Ties for Control Points JOB NO. _____

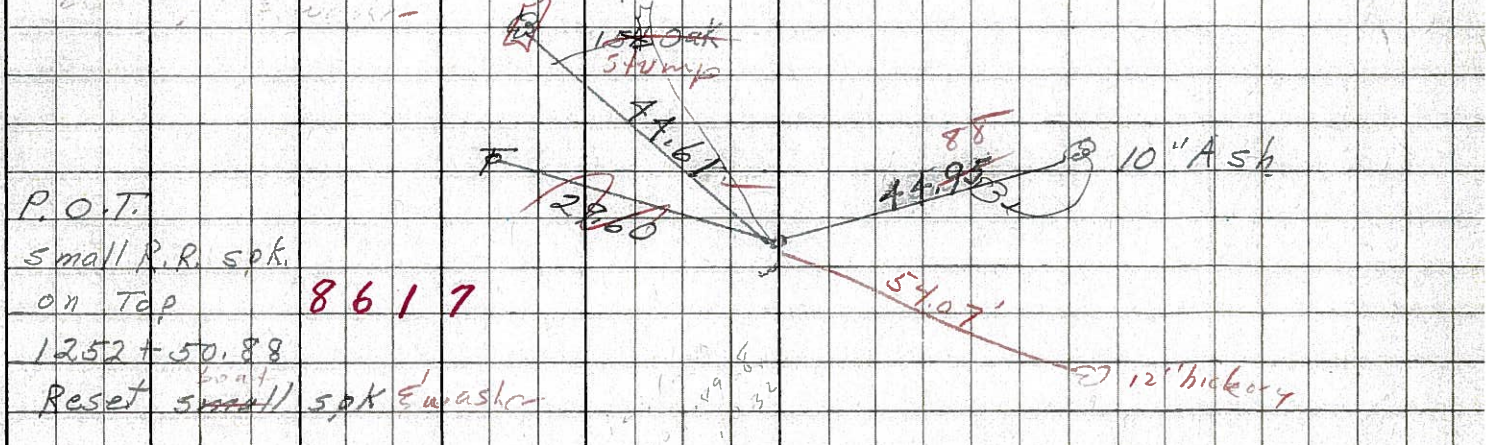
72-A



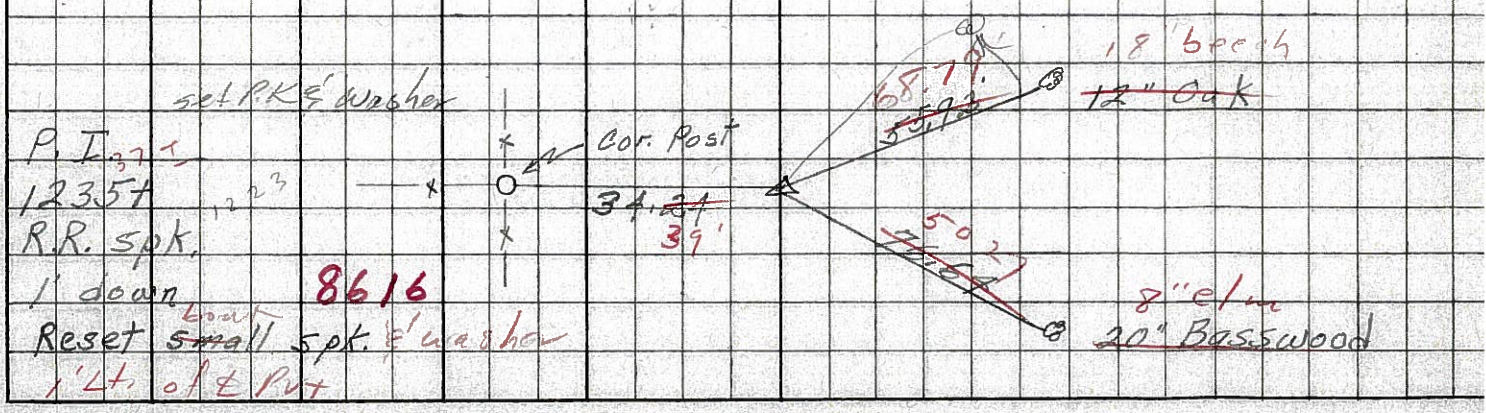
72



71



70



PERSONNEL TITLE PERSONNEL TITLE

E. Kraigbill
J. Kowaleski
D. Brooks

COUNTY Seneca DATE

S. R. 224 WEATHER

SEC. TEMP.

DESCRIPTION Scribio LEFT CENTER LINE RIGHT JOB NO. BLOOD

