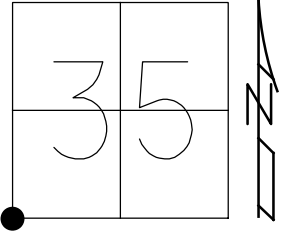


O.D.O.T. DISTRICT 2 SURVEY OFFICE (USE ONLY)

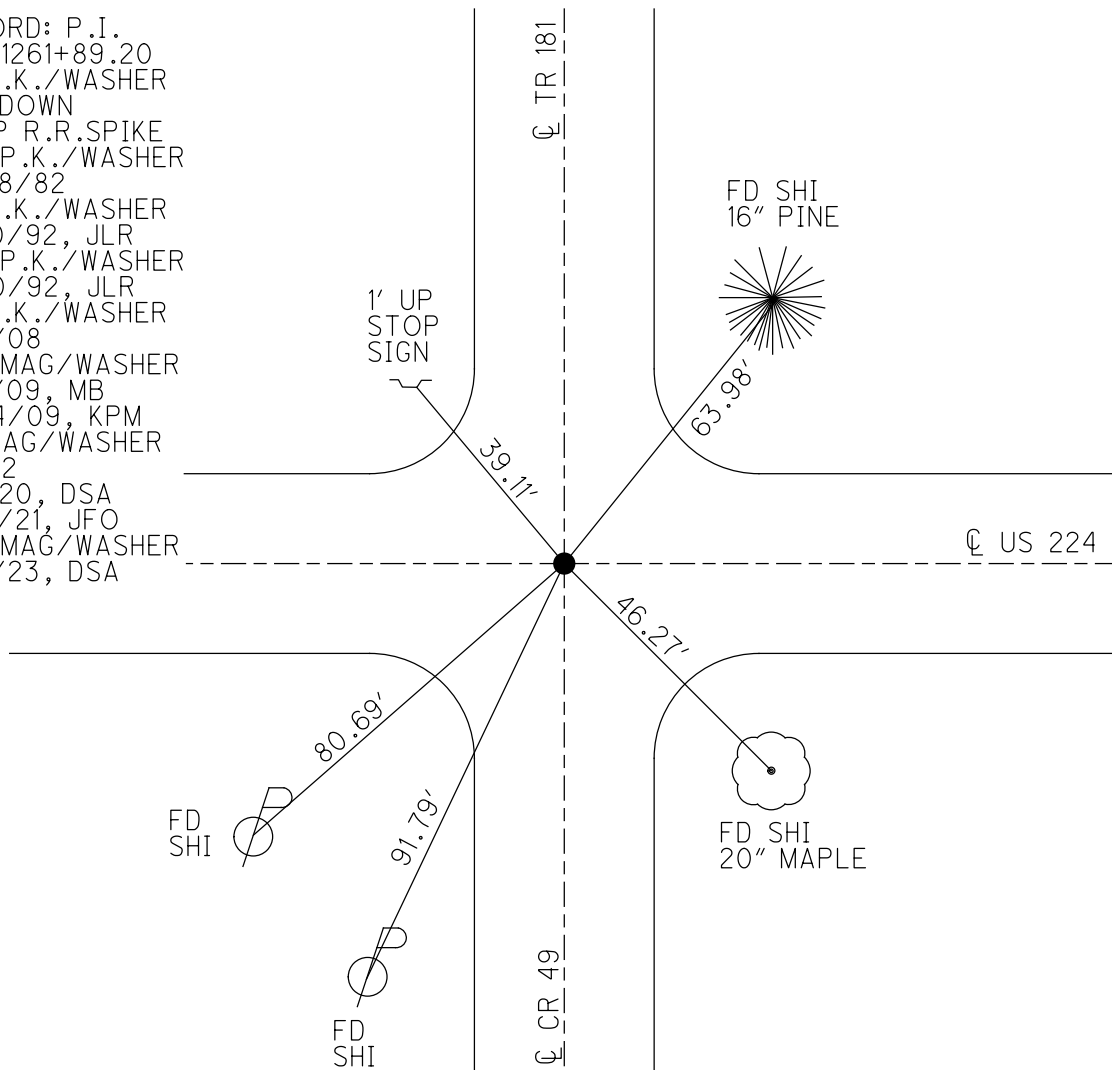
PERSONNEL \_\_\_\_\_ REFERENCE NO. 72 SHEET 15 OF 37  
 NOTES RHOADES DATE 11/8/23 ROUTE US 224  
 H.C. AUBLE WEATHER CLOUDY COUNTY SENECA  
 R.C. ASTON TEMP. 43° TOWNSHIP SCIPIO  
 \_\_\_\_\_ NIESE SECTION 35  
 DWG BY RHOADES PID 101217 T 2 N R 16 E

TYPE MONUMENT MAG/WASHER  
 ON SURFACE - ~~BELOW~~ ON  
 OFFSET Q PAVEMENT 0.6' LT : ~~RT~~  
11.8' TO LT EDGE PAVEMENT  
 STATION: 1211+35

HORIZ.DATUM: NAD83 2011 GEOID: NAVD88 2018  
 GRID: NORTHING: 515733.818 EASTING: 1831758.712



RECORD: P.I.  
 STA.1261+89.20  
 FD P.K./WASHER  
 1.5" DOWN  
 ATOP R.R.SPIKE  
 SET P.K./WASHER  
 10/28/82  
 FD P.K./WASHER  
 6/30/92, JLR  
 SET P.K./WASHER  
 11/30/92, JLR  
 FD P.K./WASHER  
 1/17/08  
 SET MAG/WASHER  
 8/4/09, MB  
 10/14/09, KPM  
 FD MAG/WASHER  
 REF72  
 9/1/20, DSA  
 3/17/21, JFO  
 SET MAG/WASHER  
 11/8/23, DSA



O.D.O.T. DISTRICT 2 SURVEY OFFICE (USE ONLY)

PERSONNEL

REFERENCE NO. 72

SHEET 14 OF 33

NOTES RHOADES

DATE 3/17/21

ROUTE US 224

H.C. O'DONNELL

WEATHER FAIR

COUNTY SENECA

R.C. \_\_\_\_\_

TEMP. 45°

TOWNSHIP SCIPIO

DWG BY NIESE

PID PAVE TRAIN

SECTION 35

T 2 N R 16 E

TYPE MONUMENT MAG/WASHER

ON SURFACE - ~~BELOW~~ ON

OFFSET Q PAVEMENT ON LT : RT

11.8' TO LT EDGE PAVEMENT

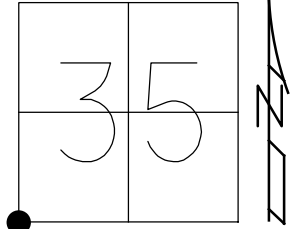
STATION: 1211+35

HORIZ.DATUM: NAD83 2011

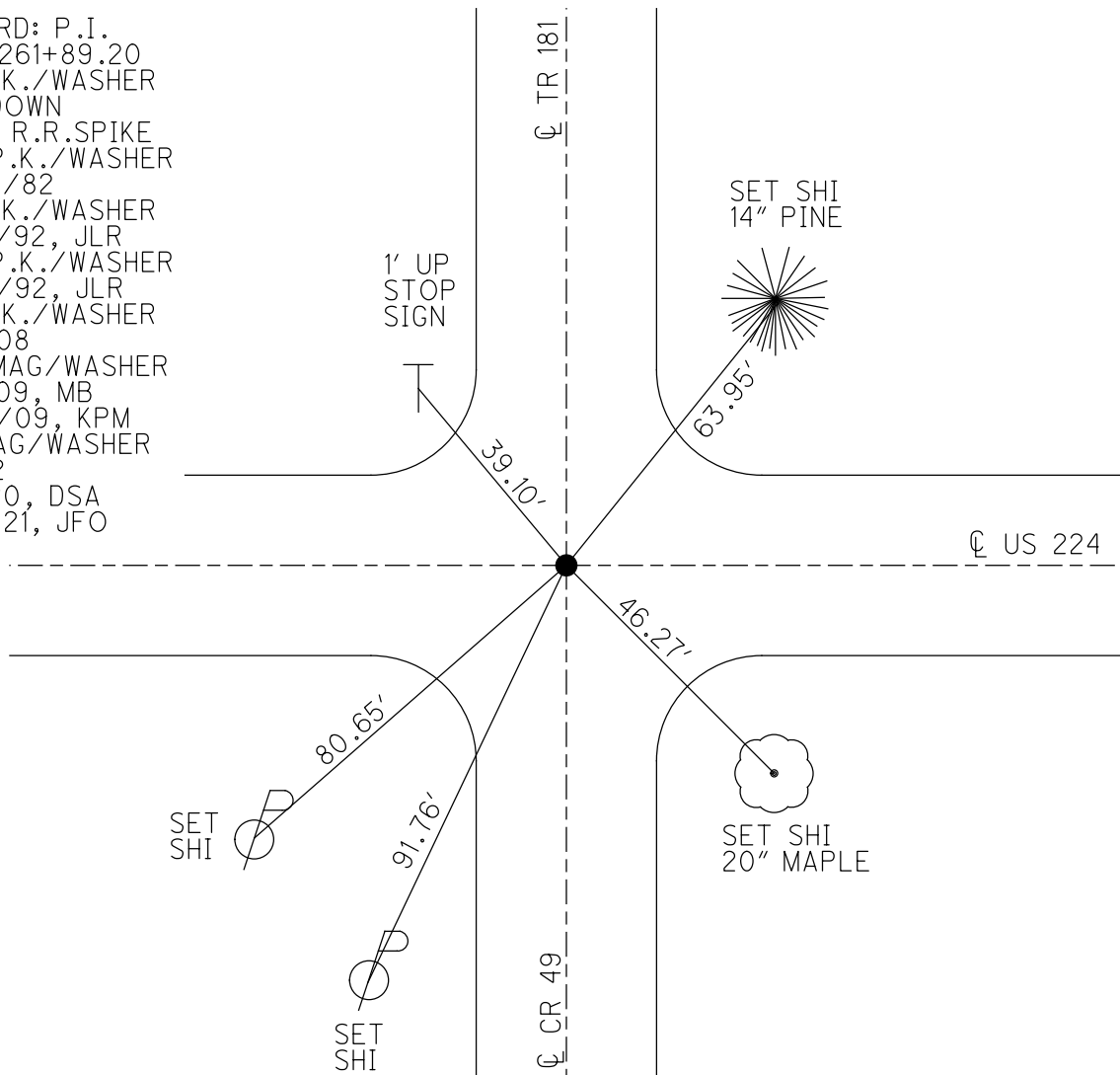
GEOID: NAVD88 2012A

GRID: NORTHING: 515733.852

EASTING: 1831758.714



RECORD: P.I.  
 STA. 1261+89.20  
 FD P.K./WASHER  
 1.5" DOWN  
 ATOP R.R.SPIKE  
 SET P.K./WASHER  
 10/28/82  
 FD P.K./WASHER  
 6/30/92, JLR  
 SET P.K./WASHER  
 11/30/92, JLR  
 FD P.K./WASHER  
 1/17/08  
 SET MAG/WASHER  
 8/4/09, MB  
 10/14/09, KPM  
 FD MAG/WASHER  
 REF72  
 9/1/20, DSA  
 3/17/21, JFO



O.D.O.T. DISTRICT 2 SURVEY OFFICE

PERSONNEL

REFERENCE NO. 72

SHEET 13 OF 35

NOTES Moser

DATE 8-4-09

ROUTE U.S. 224

H.C. Moser

WEATHER Fair

COUNTY SENECA

R.C. Pietkowski

TEMP. +40°

TOWNSHIP SCIPPIO

Goldberg

SECTION 34, 35

T 2 N R 16 E

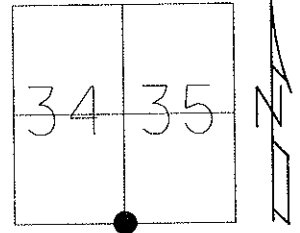
TYPE MONUMENT P.K./WASHER

ON SURFACE - ~~BELOW~~ ON

LEFT - Q PAV'T - RIGHT ON

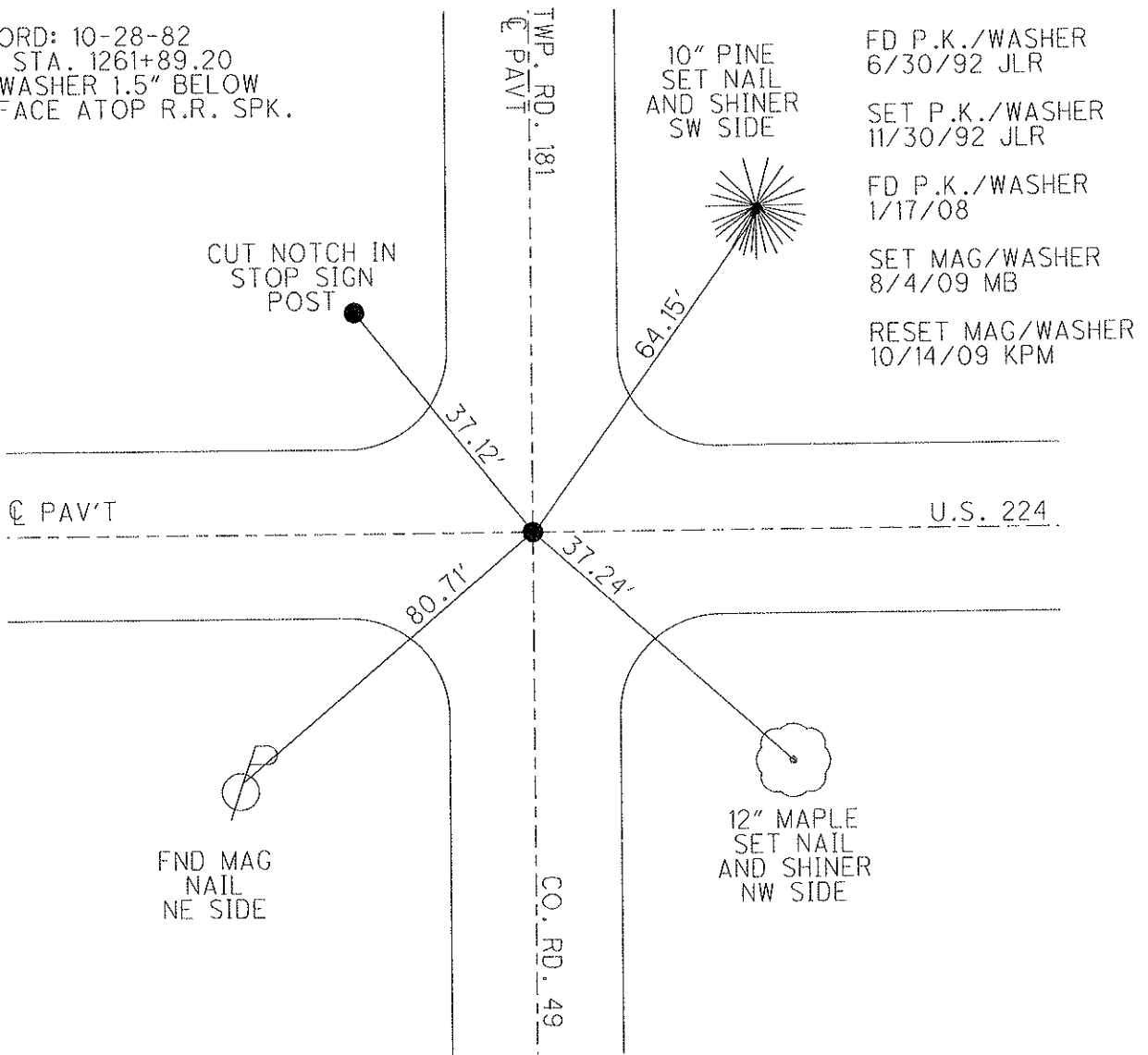
11.8' TO LT. EDGE PAVEMENT

S.L.M. 1221 + 44.99



Grid: Northing: 515733.852 Easting: 1831758.714

RECORD: 10-28-82  
P.I. STA. 1261+89.20  
PK&WASHER 1.5" BELOW  
SURFACE ATOP R.R. SPK.



- FD P.K./WASHER 6/30/92 JLR
- SET P.K./WASHER 11/30/92 JLR
- FD P.K./WASHER 1/17/08
- SET MAG/WASHER 8/4/09 MB
- RESET MAG/WASHER 10/14/09 KPM

# O.D.O.T. DISTRICT 2 SURVEY OFFICE

PERSONNEL

REFERENCE NO. 72

SHEET 11 OF 32

NOTES Cheney  
 H.C. Ripple  
 R.C. BARBOUR  
Geyman

DATE 16-30-92  
 WEATHER Cloudy  
 TEMP. 55°

ROUTE U.S. 224  
 COUNTY Seneca  
 TOWNSHIP Scipio & Bloom  
 SECTION 34 & 35 - 2 & 3  
 T? N R 16 E

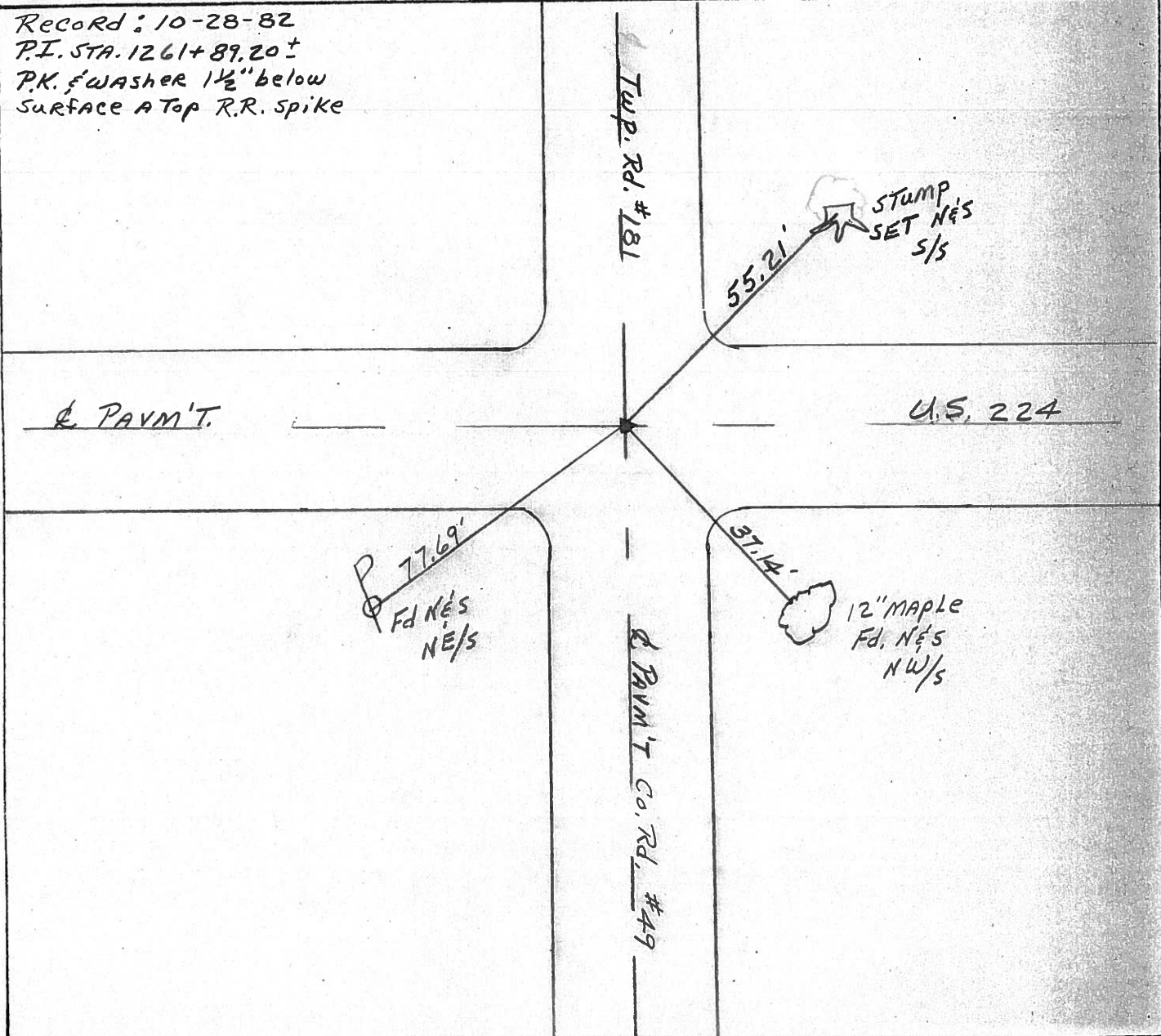
TYPE MONUMENT <sup>6-30-92</sup> Fd. P.K. & Washer - Set P.K. & Washer  
 ON SURFACE - ~~BELOW~~ yes  
~~LEFT - & PAV'T. - RIGHT~~ yes  
10' TO RT. EDGE PAVEMENT  
 S.L.M. 1211+02

SET P.K. & Washer  
 11-30-92  
 JLR

34	35
3	2



Record: 10-28-82  
 P.I. STA. 1261+89.20±  
 P.K. & Washer 1 1/2" below  
 Surface at Top R.R. Spike



County Seneca S.R. 224

Date 10/28/82 Drawn 11/02/82

Township Scipio, E Bloom

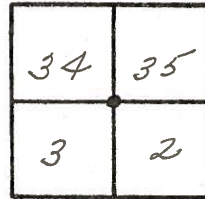
Weather sunny

Section 34, E 35 - 2, E 3

Temp. 68°

T<sup>2</sup><sub>1</sub>N, R<sup>16</sup><sub>16</sub>E

Personnel Cronin

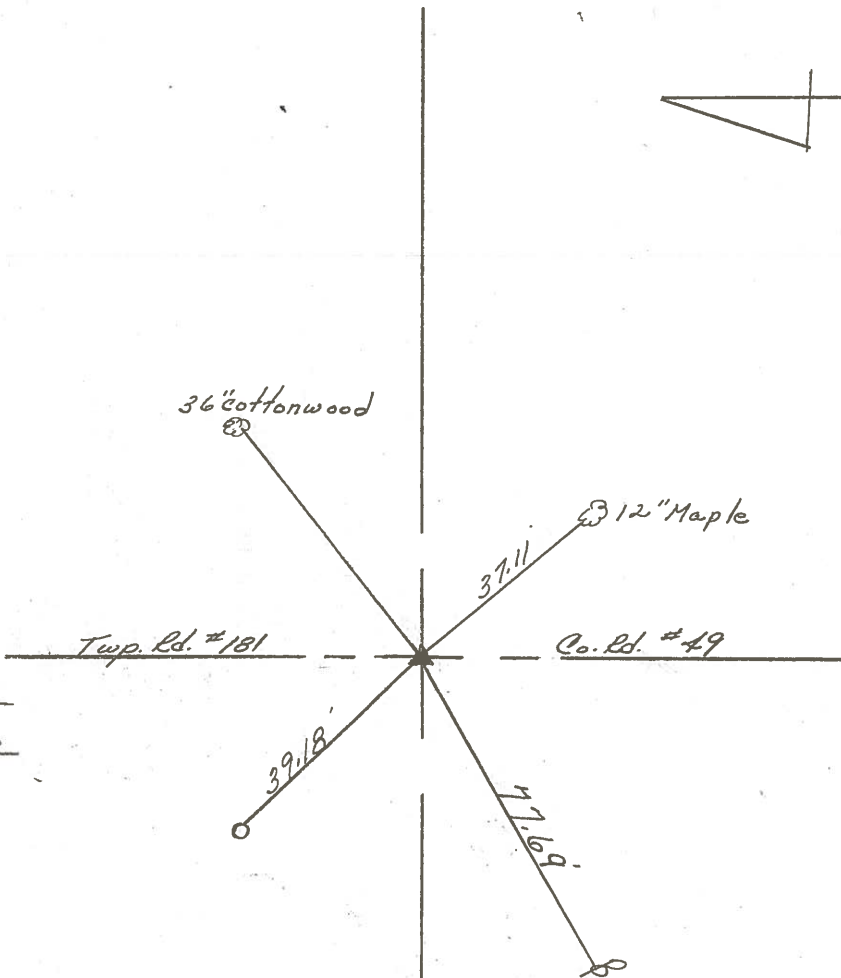


72

Ripple  
Geyman  
Mosser  
Barbour



P.I.  
1261 + 89.20 ±  
P.K. washer 1 1/2" below  
surface at top R.R. spike



R.F/W U.S. # 2247

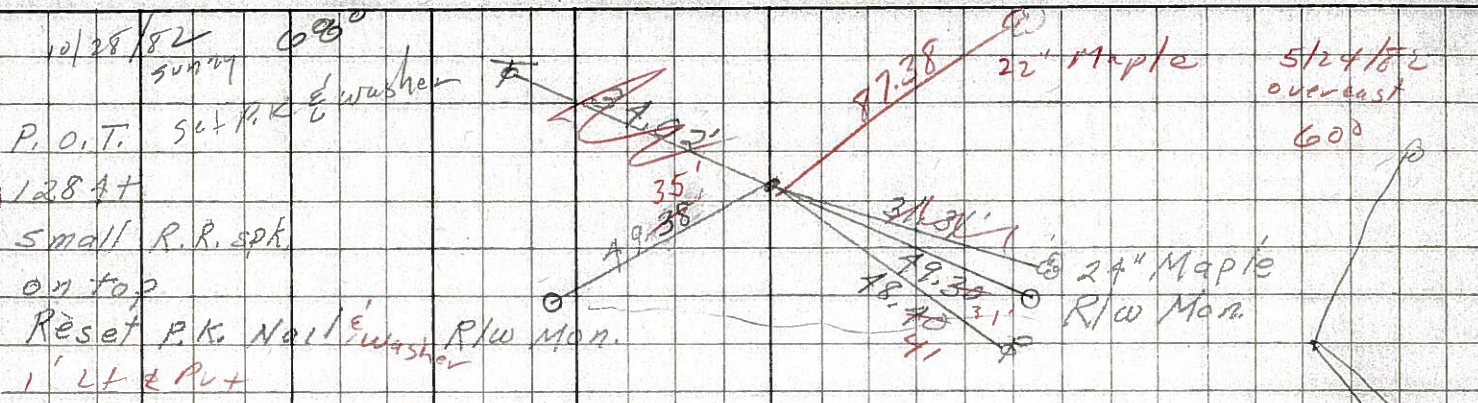


PERSONNEL TITLE PERSONNEL TITLE  
 Schneider \_\_\_\_\_ Potts \_\_\_\_\_  
 Mosser \_\_\_\_\_  
 Barbour \_\_\_\_\_  
 Redding \_\_\_\_\_

COUNTY Seneca DATE 3-29-68  
 S. R. U. S. # 22A WEATHER Fair  
 SEC. S. R. #100 to Attica TEMP. 60°

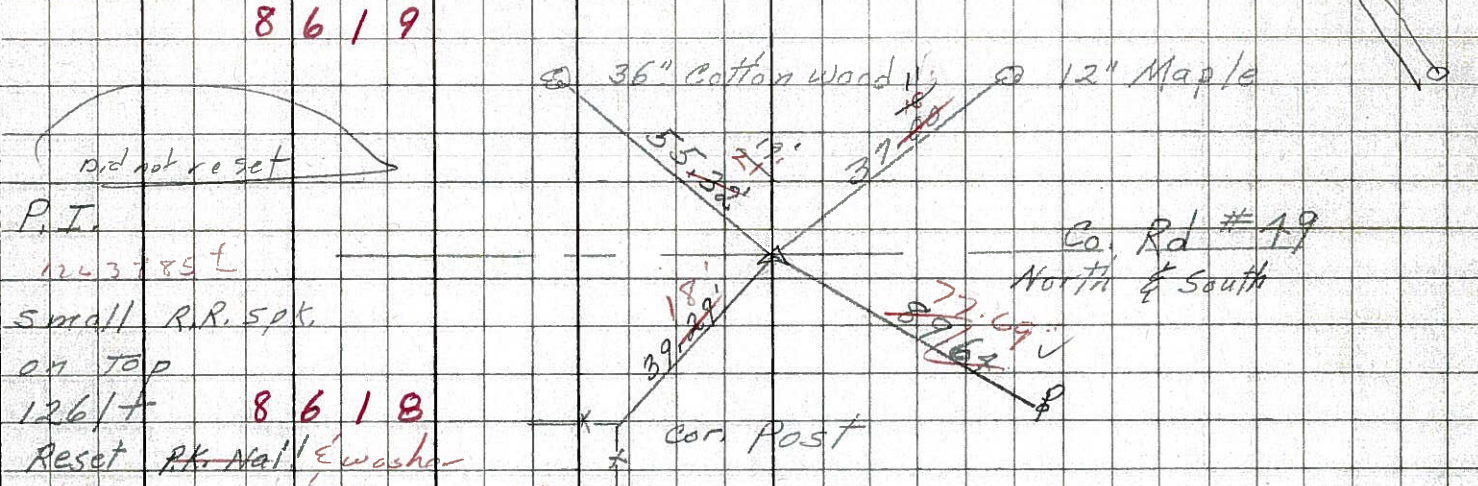
DESCRIPTION Ties for Control Points JOB NO. \_\_\_\_\_

72-A



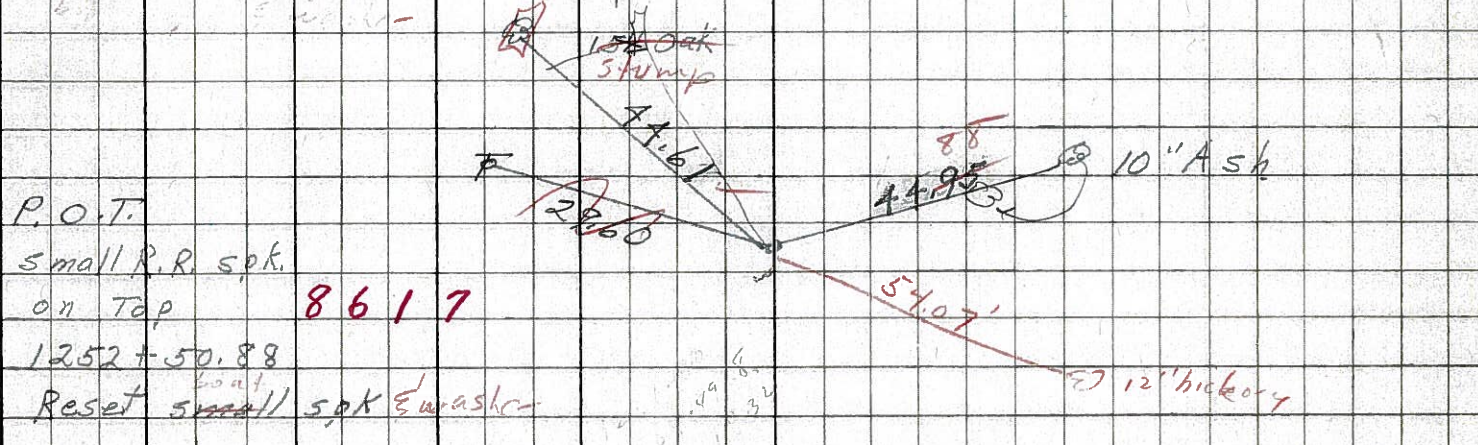
8619

72



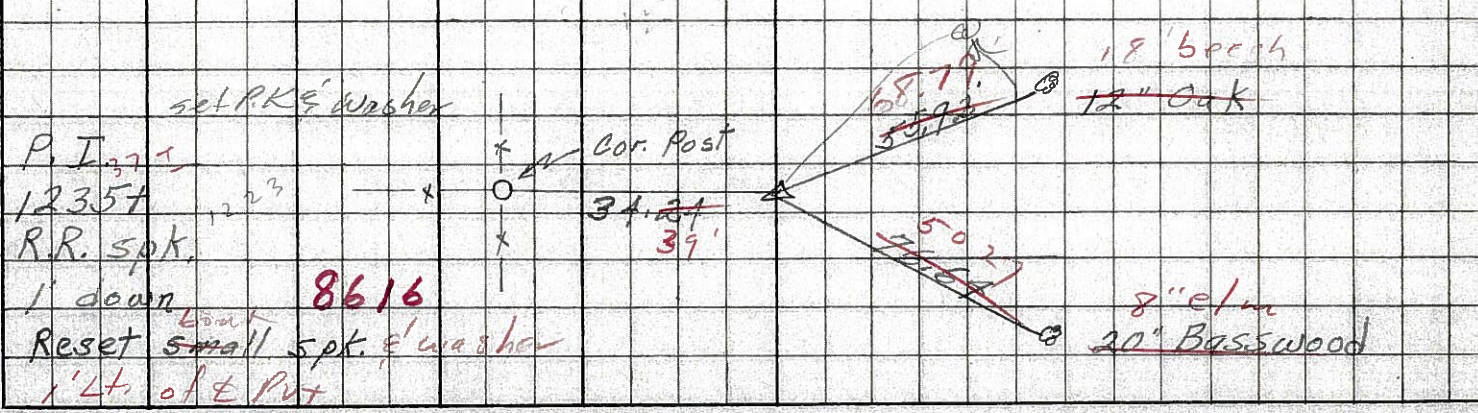
8618

71



8617

70



8616



PERSONNEL TITLE PERSONNEL TITLE

COUNTY Seneca DATE 1-12-66

S. R. U.S. # 224 WEATHER

SEC. TEMP.

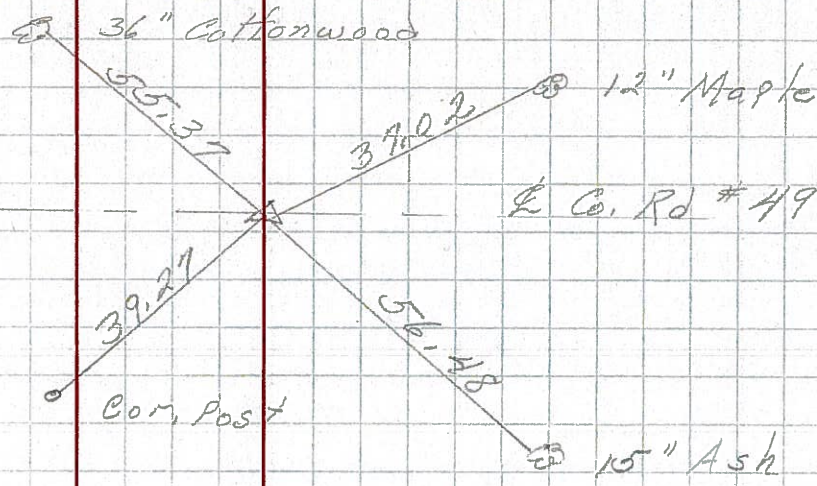
DESCRIPTION From S.R. #19 to Attica JOB NO.

LEFT CENTER LINE RIGHT

72

P.I. 52+99.52  
Δ = 00° 01' 45"  
R.R. spk. on E R/W

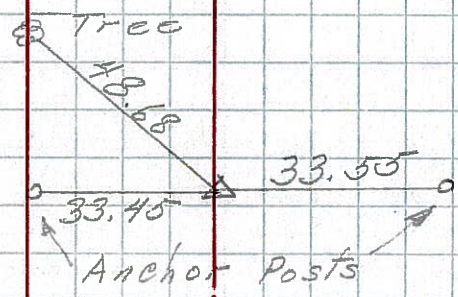
187  
8618



70

P.I. 26+59.18  
Δ = 0° 04' 41"  
R.R. spk. on E R/W

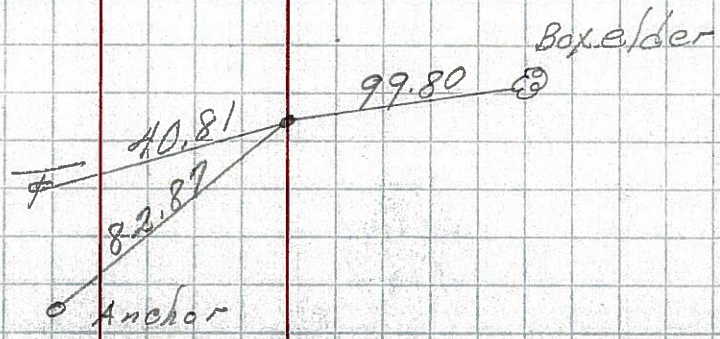
186  
8617



69

P.O.T  
1221 + 34.86  
small R.R. spk

8615





PERSONNEL TITLE PERSONNEL TITLE

E. Krabill

COUNTY Seneca

DATE

J. Kowaleski

S. R. 224

WEATHER

D. Brooks

SEC.

TEMP.

DESCRIPTION

Scibio

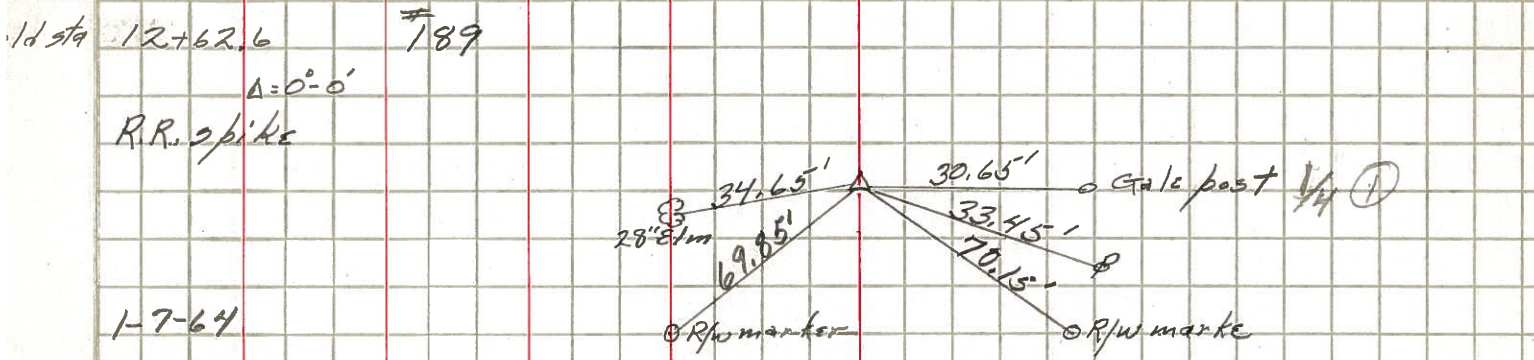
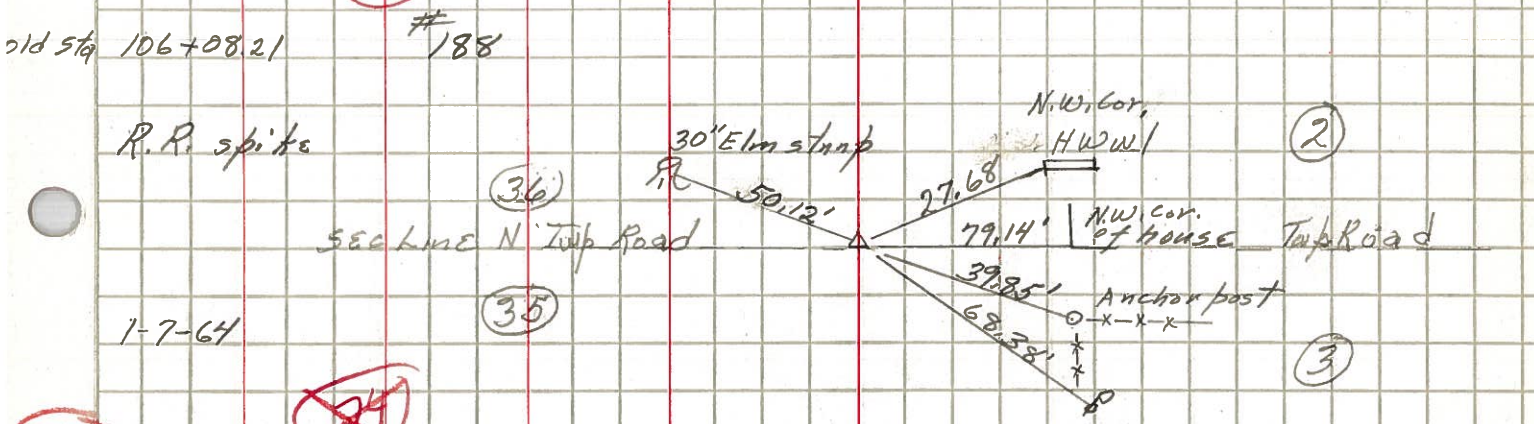
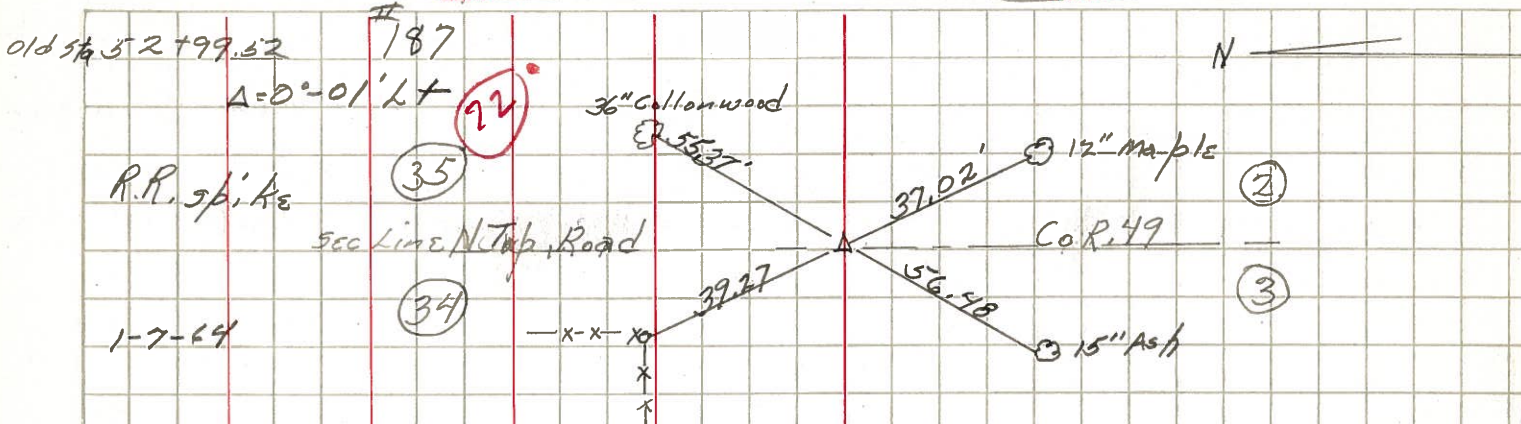
Bloom

JOB NO.

LEFT

CENTER LINE

RIGHT





PERSONNEL TITLE PERSONNEL TITLE

COUNTY Seneca

DATE checked 10-11-49

S. R. # 224

WEATHER

SEC. G-D-F-E

TEMP.

DESCRIPTION S.H. 272 From intersection of SR\*19 to Huron Co. line

JOB NO.

LEFT

CENTER LINE

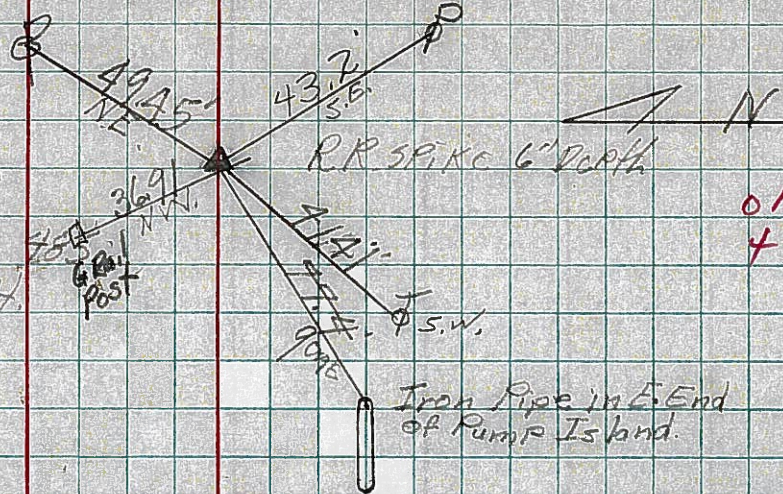
RIGHT

68

Sta. 0+00

E.P. Spike on & R/W  
0+00 is in center of  
intersection of S.H. 272  
Sec. H.

#163



OK  
4-25-60

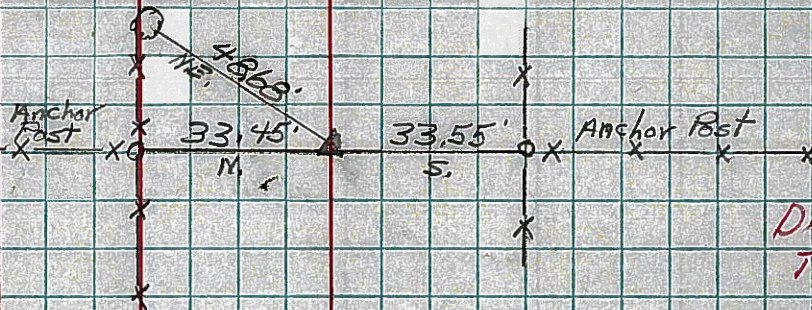
70

Sta. 26+59.18

$\Delta = 0^{\circ}04' Lt.$

R.R. Spike on &  
R/W

#186



Did not find  
Ties gone

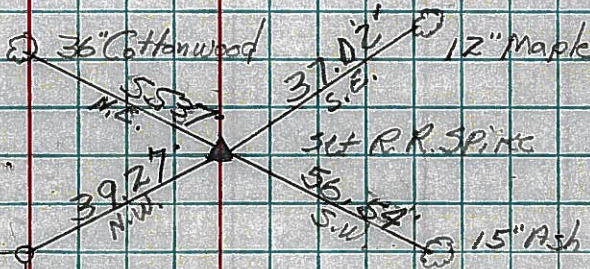
72

Sta. 52+99.52

$\Delta = 0^{\circ}01' Lt.$

R.R. Spike on &  
R/W

#187



OK  
4-25-60

73

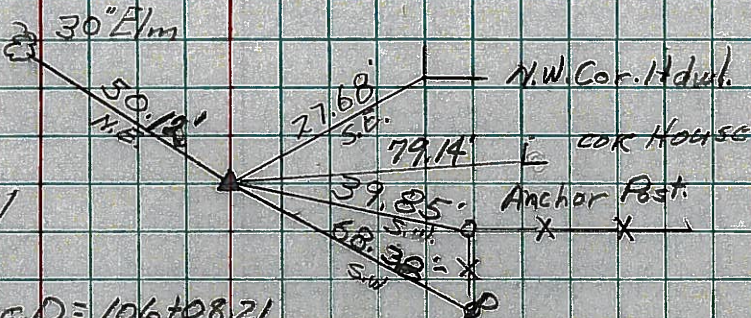
Sta. 106+08.21

R.P. Spike on & R/W

4-25-59

End Sec. G @ 100 Sec. D = 106+08.21

#188



OK  
4-25-60