

O.D.O.T. DISTRICT 2 SURVEY OFFICE (USE ONLY)

PERSONNEL

REFERENCE NO. 73

SHEET 17 OF 37

NOTES RHOADES

DATE 11/8/23

ROUTE US 224

H.C. AUBLE

WEATHER CLOUDY

COUNTY SENECA

R.C. ASTON

TEMP. 43°

TOWNSHIP SCIPIO

NIESE

SECTION 35

DWG BY RHOADES PID 101217

T 2 N R 16 E

TYPE MONUMENT MAG/WASHER

ON SURFACE - ~~BELOW~~ ON

OFFSET C PAVEMENT 1.1' LT : ~~RT~~

12.5' TO RT EDGE PAVEMENT

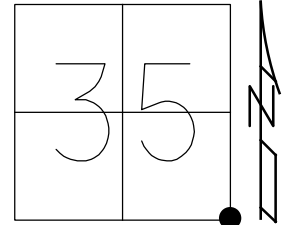
STATION: 1264+48.26

HORZ.DATUM: NAD83 2011

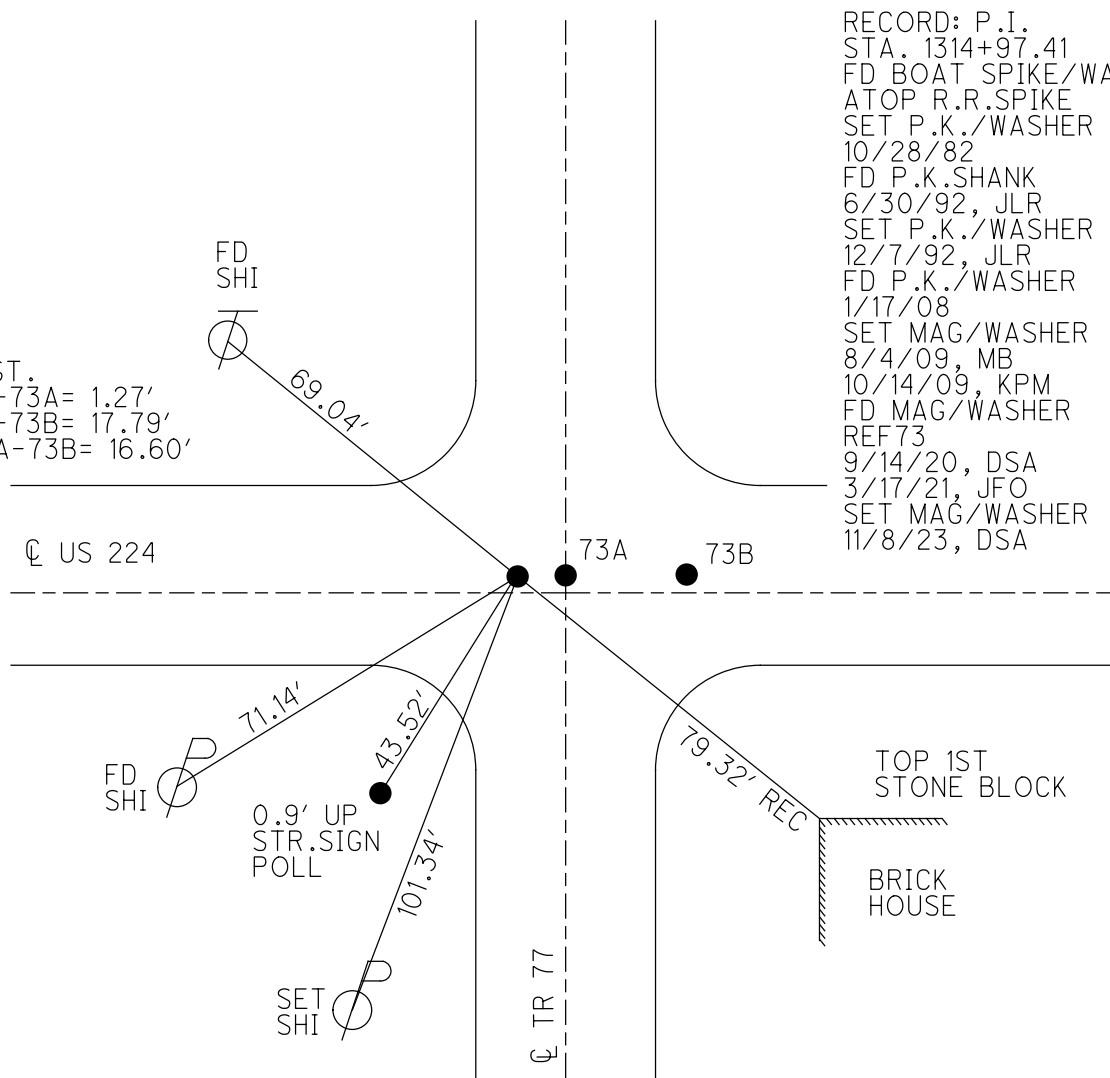
GEOID: NAVD88 2018

GRID: NORTHING: 515713.224

EASTING: 1837062.059



DIST.
73-73A= 1.27'
73-73B= 17.79'
73A-73B= 16.60'

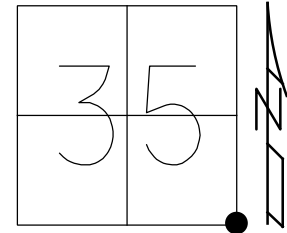


RECORD: P.I.
STA. 1314+97.41
FD BOAT SPIKE/WASHER
ATOP R.R.SPIKE
SET P.K./WASHER
10/28/82
FD P.K.SHANK
6/30/92, JLR
SET P.K./WASHER
12/7/92, JLR
FD P.K./WASHER
1/17/08
SET MAG/WASHER
8/4/09, MB
10/14/09, KPM
FD MAG/WASHER
REF73
9/14/20, DSA
3/17/21, JFO
SET MAG/WASHER
11/8/23, DSA

O.D.O.T. DISTRICT 2 SURVEY OFFICE (USE ONLY)

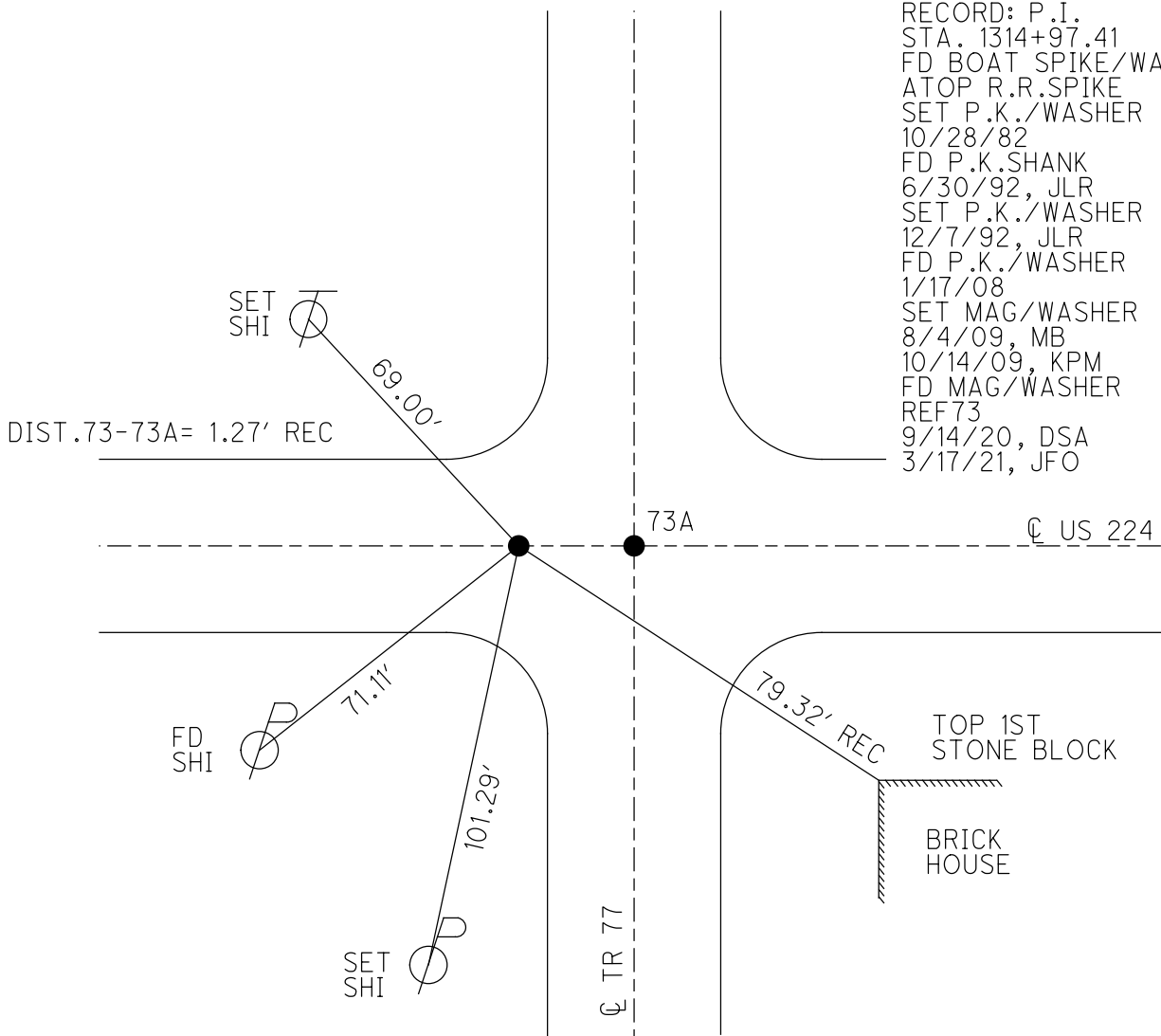
PERSONNEL _____ REFERENCE NO. 73 SHEET 16 OF 33
 NOTES RHOADES DATE 3/17/21 ROUTE US 224
 H.C. O'DONNELL WEATHER FAIR COUNTY SENECA
 R.C. _____ TEMP. 45° TOWNSHIP SCIPIO
 DWG BY NIESE PID PAVE TRAIN SECTION 35
 T 2 N R 16 E

TYPE MONUMENT MAG/WASHER
 ON SURFACE - ~~BELOW~~ ON
 OFFSET ☉ PAVEMENT ON LT : RT
12.5' TO RT EDGE PAVEMENT
 STATION: 1264+48.26



HORZ.DATUM: NAD83 2011 GEOID: NAVD88 2012A
 GRID: NORTHING: 515713.576 EASTING: 1837063.248

RECORD: P.I.
 STA. 1314+97.41
 FD BOAT SPIKE/WASHER
 ATOP R.R.SPIKE
 SET P.K./WASHER
 10/28/82
 FD P.K.SHANK
 6/30/92, JLR
 SET P.K./WASHER
 12/7/92, JLR
 FD P.K./WASHER
 1/17/08
 SET MAG/WASHER
 8/4/09, MB
 10/14/09, KPM
 FD MAG/WASHER
 REF73
 9/14/20, DSA
 3/17/21, JFO



O.D.O.T. DISTRICT 2 SURVEY OFFICE

PERSONNEL

REFERENCE NO. 73 A

SHEET 15 OF 35

NOTES Moser

DATE 8-4-09

ROUTE U.S. 224

H.C. Moser

WEATHER Fair

COUNTY SENECA

R.C. Pietkowski

TEMP. +40°

TOWNSHIP SCIPIO

Goldberg

SECTION 35, 36

T 2 N R 16 E

TYPE MONUMENT P.K./WASHER

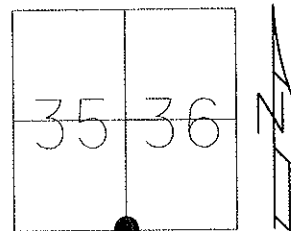
ON SURFACE - ~~BELOW~~ ON

LEFT - ☉ PAV'T - RIGHT ON

12.5' TO RT EDGE PAVEMENT

S.L.M. 1264 + 48.26

Grid: Northing: 515713.576 Easting: 1837063.248



RECORD 10-28-82
P.I. STA 1314+97.41
SET PK & WASHER ATOP BOAT SPK
ATOP R.R. SPIKE.

FD BROKEN P.K.
6/30/92 JLR

SET P.K./WASHER
12/7/92 JLR

FD P.K./WASHER
1/17/08

SET MAG/WASHER
8/4/09 MB

RESET MAG/WASHER
10/14/09 KPM

SET NAIL
AND SHINER
SE SIDE



65.07'

☉ PAV'T

1.27' 73

U.S. 224



71.13'

42.71'

SET NAIL
AND SHINER
NE SIDE

BASE OF
SIGN POST

TWP. RD. #77

79.32'

TOP 1ST STONE BLOCK

N.W. CoR
BRICK HOUSE

O.D.O.T. DISTRICT 2 SURVEY OFFICE

PERSONNEL

REFERENCE NO. 73

SHEET 13 OF 32

NOTES Cheney
 H.C. RIPPLE
 R.C. BARBOUR
Geyman

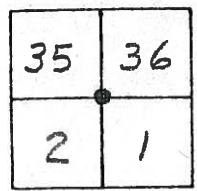
DATE 6-30-92
 WEATHER Cloudy
 TEMP. 55°

ROUTE U.S. 224
 COUNTY Seneca
 TOWNSHIP Scipio & Bloom
 SECTION 35 & 36 - 1 & 2
T² N R¹⁶ E

TYPE MONUMENT "A" Fd. P.K. & Washer
"B" Fd. Broken P.K.
 ON SURFACE - ~~BELOW~~ yes
~~LEFT~~ & ~~PAV'T.~~ - ~~RIGHT~~ yes
10' TO RT. EDGE PAVEMENT
 S.L.M. 1264+06

RESET 12-07-92 P.K. & W
 RESET 12-07-92 P.K. & W.
 S.L.R.

73-A



Record: 10-28-82
 P.I. STA. 1314+97.41 ±
 Set P.K. & Washer A Top boat spk.
 A Top R.R. Spike

