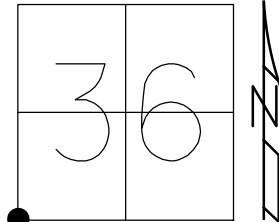


O.D.O.T. DISTRICT 2 SURVEY OFFICE (USE ONLY)

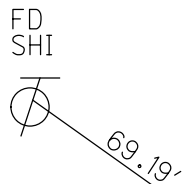
PERSONNEL _____ REFERENCE NO. 73 A SHEET 18 OF 37
 NOTES RHOADES DATE 11/8/23 ROUTE US 224
 H.C. AUBLE WEATHER CLOUDY COUNTY SENECA
 R.C. ASTON TEMP. 43° TOWNSHIP SCIPIO
 _____ NIESE SECTION 36
 DWG BY RHOADES PID 101217 T 2 N R 16 E

TYPE MONUMENT MAG/WASHER
 ON SURFACE - ~~BELOW~~ ON _____
 OFFSET C PAVEMENT 1.4' LT : ~~RT~~
 _____ TO _____ EDGE PAVEMENT
 STATION: 1264+49.53

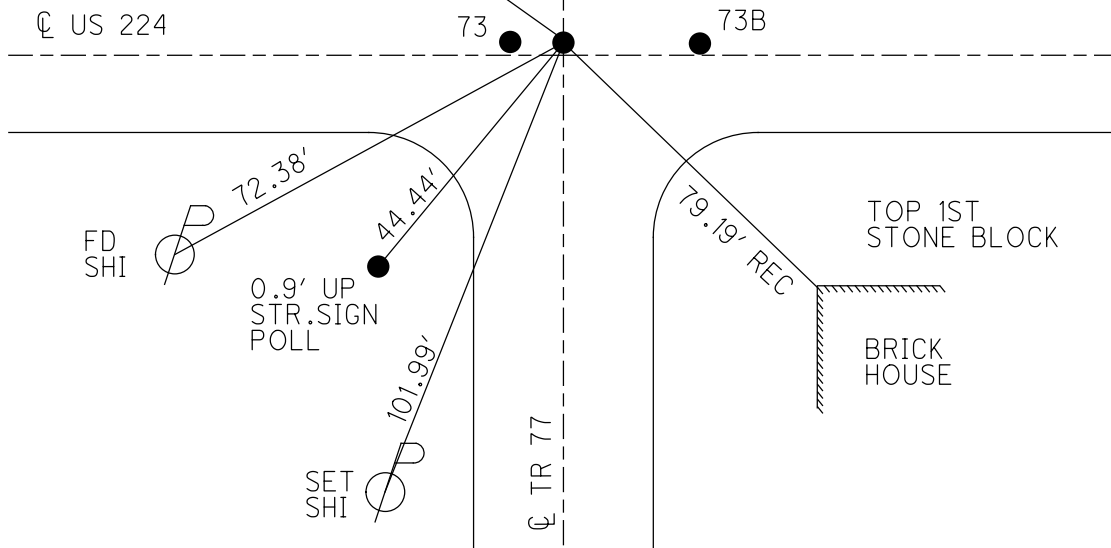
HORZ. DATUM: NAD83 2011 GEOID: NAVD88 2018
 GRID: NORTHING: 515713.585 EASTING: 1837063.266



DIST.
 73-73A= 1.27'
 73-73B= 17.79'
 73A-73B= 16.60'



RECORD:
 FD P.K./WASHER
 6/30/92, JLR
 SET P.K./WASHER
 12/7/92, JLR
 FD P.K./WASHER
 5/6/08
 SET MAG/WASHER
 8/4/09, MB
 10/14/09, KPM
 D.N.F.
 9/14/20, DSA
 FD MAG/WASHER
 3" DOWN
 REF73A
 6/16/23, DSA
 SET MAG/WASHER
 11/8/23, DSA



O.D.O.T. DISTRICT 2 SURVEY OFFICE (USE ONLY)

PERSONNEL

REFERENCE NO. 73 A

SHEET 17 OF 33

NOTES RHOADES DATE 3/17/21
 H.C. O'DONNELL WEATHER FAIR
 R.C. _____ TEMP. 45°

ROUTE US 224
 COUNTY SENECA
 TOWNSHIP SCIPIO
 SECTION 36
 T 2 N R 16 E

DWG BY NIESE PID PAVE TRAIN

TYPE MONUMENT D.N.F.

ON SURFACE - BELOW HOLE

OFFSET \odot PAVEMENT ON LT : RT
- TO - EDGE PAVEMENT

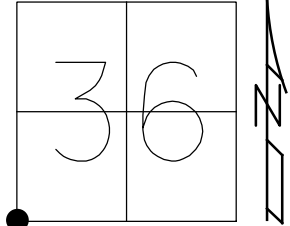
STATION: 1264+48.26 REC

HORIZ.DATUM: NAD83 2011

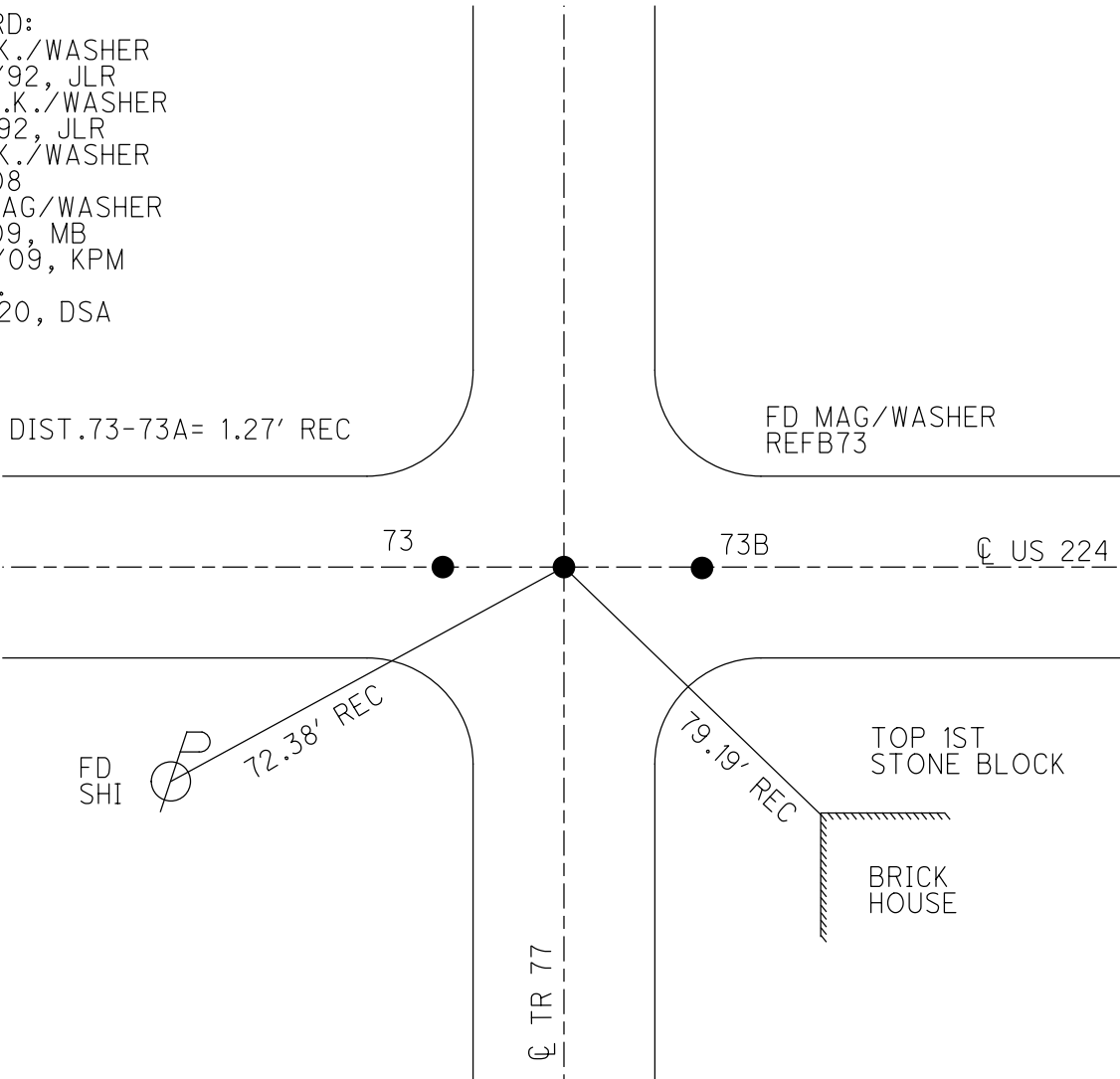
GEOID: NAVD88 2012A

GRID: NORTHING: _____

EASTING: _____



RECORD:
 FD P.K./WASHER
 6/30/92, JLR
 SET P.K./WASHER
 12/7/92, JLR
 FD P.K./WASHER
 5/6/08
 SET MAG/WASHER
 8/4/09, MB
 10/14/09, KPM
 D.N.F.
 9/14/20, DSA



O.D.O.T. DISTRICT 2 SURVEY OFFICE

PERSONNEL

REFERENCE NO. 73

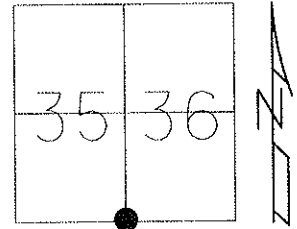
SHEET 16 OF 35

NOTES Moser
 H.C. Moser
 R.C. Pietkowski
Goldberg

DATE 8-4-09
 WEATHER Fair
 TEMP. +40°

ROUTE U.S. 224
 COUNTY SENECA
 TOWNSHIP SCIPIO
 SECTION 35, 36
 T 2 N R 16 E

TYPE MONUMENT P.K./WASHER
 ON SURFACE - ~~BELOW~~ ON
 LEFT - ☉ PAV'T - RIGHT ON
12.2' TO RT EDGE PAVEMENT
 S.L.M. 1264 + 48.26



Grid: Northing: 515713.270 Easting: 1837061.983

RECORD 10-28-82
 P.I. STA 1314+97.41
 SET PK & WASHER ATOP
 BOAT SPK ATOP R.R. SPIKE.

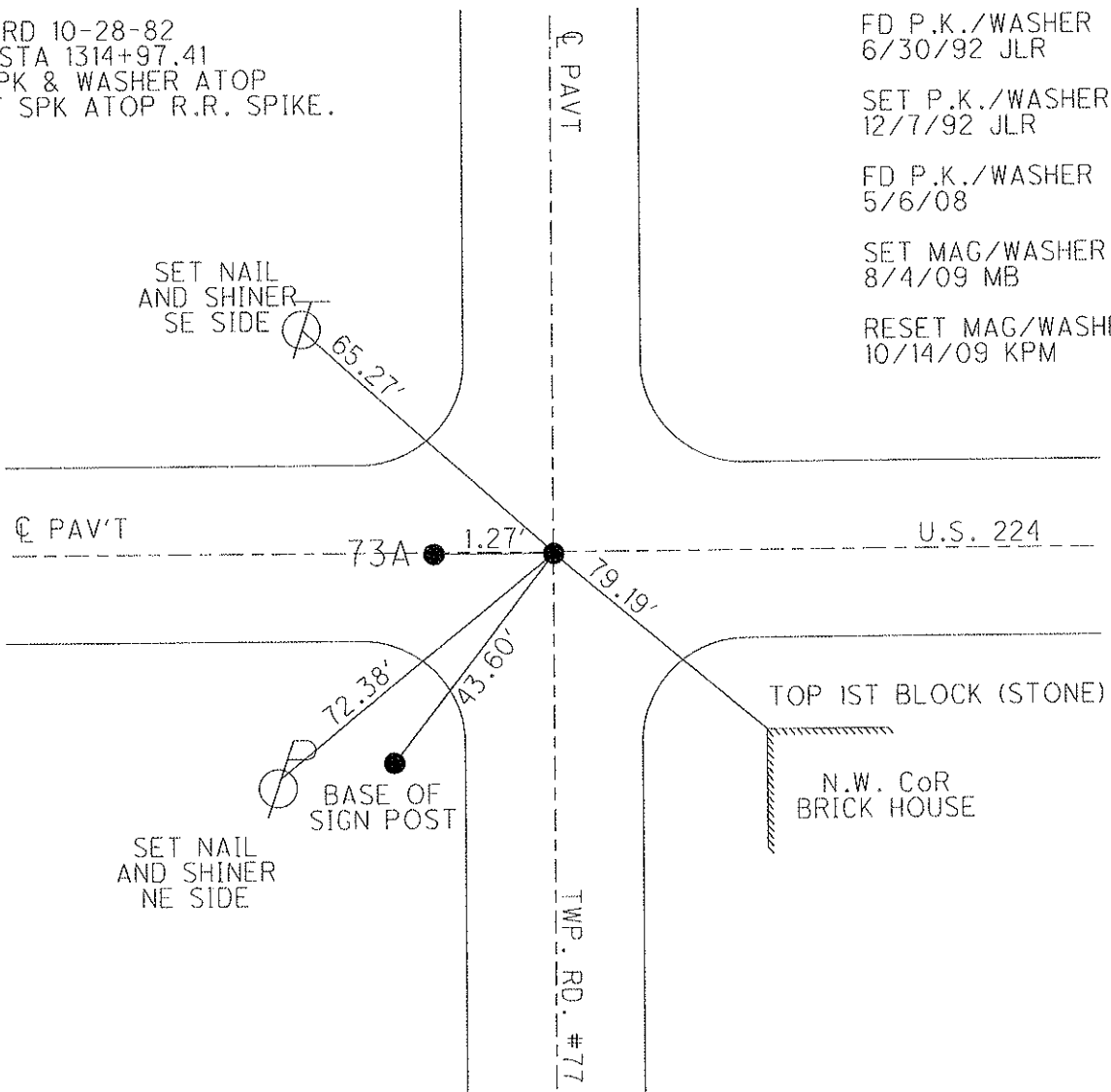
FD P.K./WASHER
 6/30/92 JLR

SET P.K./WASHER
 12/7/92 JLR

FD P.K./WASHER
 5/6/08

SET MAG/WASHER
 8/4/09 MB

RESET MAG/WASHER
 10/14/09 KPM



SET NAIL
 AND SHINER
 SE SIDE

SET NAIL
 AND SHINER
 NE SIDE

TOP 1ST BLOCK (STONE)

N.W. CoR
 BRICK HOUSE

O.D.O.T. DISTRICT 2 SURVEY OFFICE

PERSONNEL

REFERENCE NO. 73

SHEET 13 OF 32

NOTES Cheney
 H.C. RIPPLE
 R.C. BARBOUR
Geyman

DATE 6-30-92
 WEATHER cloudy
 TEMP. 55°

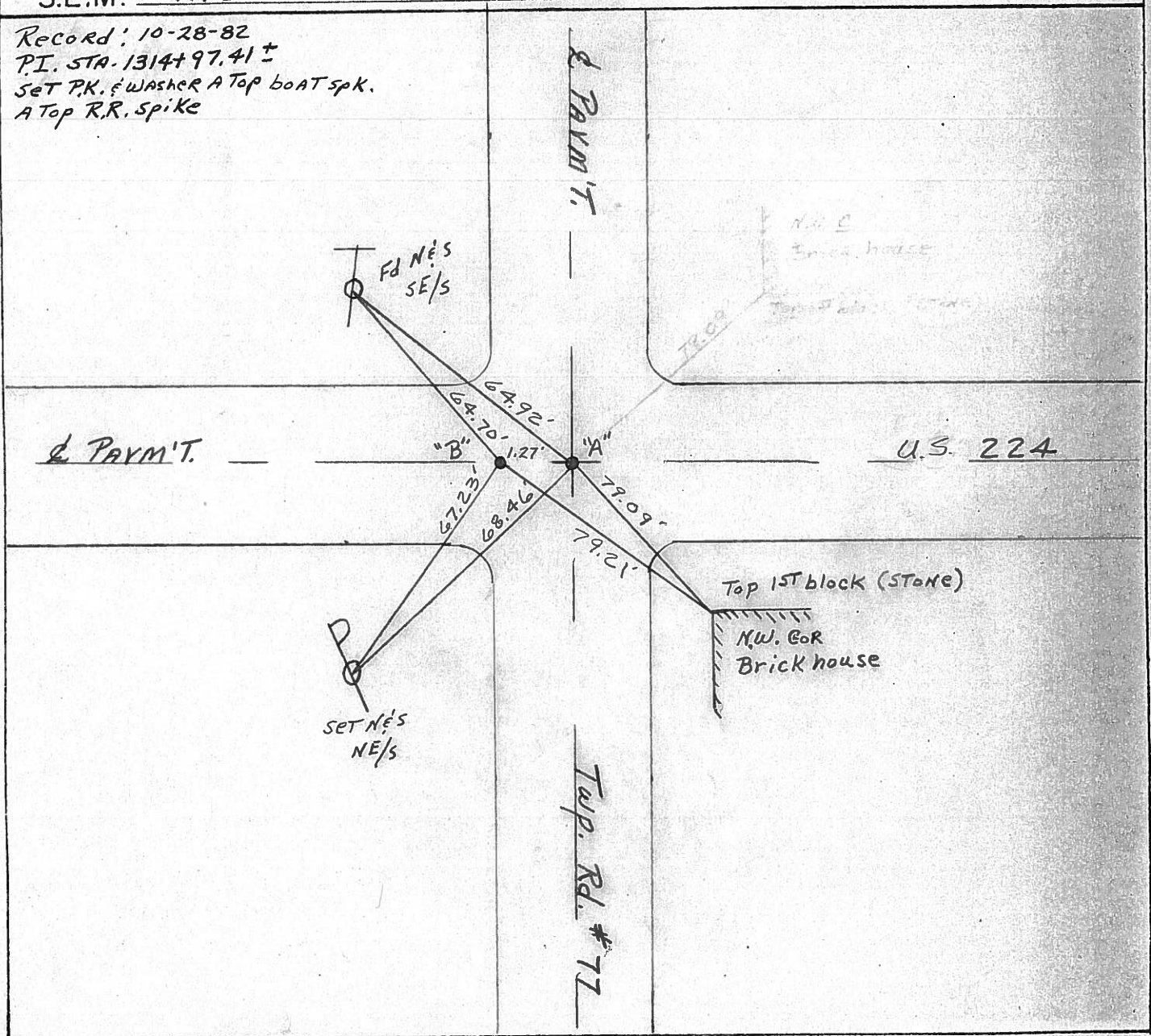
ROUTE U.S. 224
 COUNTY Seneca
 TOWNSHIP Scipio & Bloom
 SECTION 35 & 36 - 1 & 2
 T. 1 N R. 16 E

TYPE MONUMENT 6-30-92 1" Fd. PK. & Washer
B "Fd. Broken PK." Reset 12-07-92 P.K. & W.
Reset 12-07-92 P.K. & W.
J.L.R.
 ON SURFACE - ~~BELOW~~ yes
~~LEFT~~ & ~~PAV'T.~~ - ~~RIGHT~~ yes
10' TO RT. EDGE PAVEMENT
 S.L.M. 1264+06

35	36
2	1



Record: 10-28-82
 P.I. STA. 1314+97.41 ±
 Set P.K. & Washer A Top boat spk.
 A Top R.R. Spike



County Seneca S.R. 224

Township Scipio, E' Bloom

Section 35 E 36 - 1 E 2

T² N, R¹⁶ E

Personnel Cronin

Ripple

Geyman

Mosser

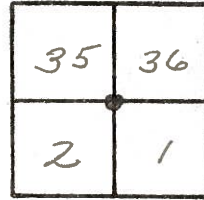
Barbour

13

Date 10/28/82 Drawn 11/02/82

Weather sunny

Temp. 70°

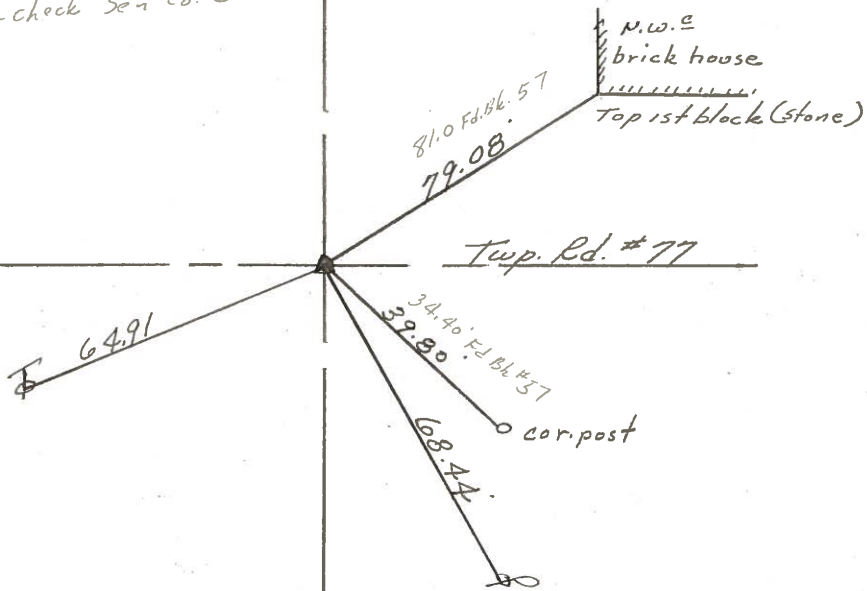


106 + 88.28 ? see Fd Bk #157 pg 2 Begin Sec D
 0 + 100 = 106 + 100
 8.21 maybe offset - check Sen Co. ENG;
 END SEC G

P.I.

1314 + 97.41 ±

Set P.K. washer atop boat spike atop R.R. spike

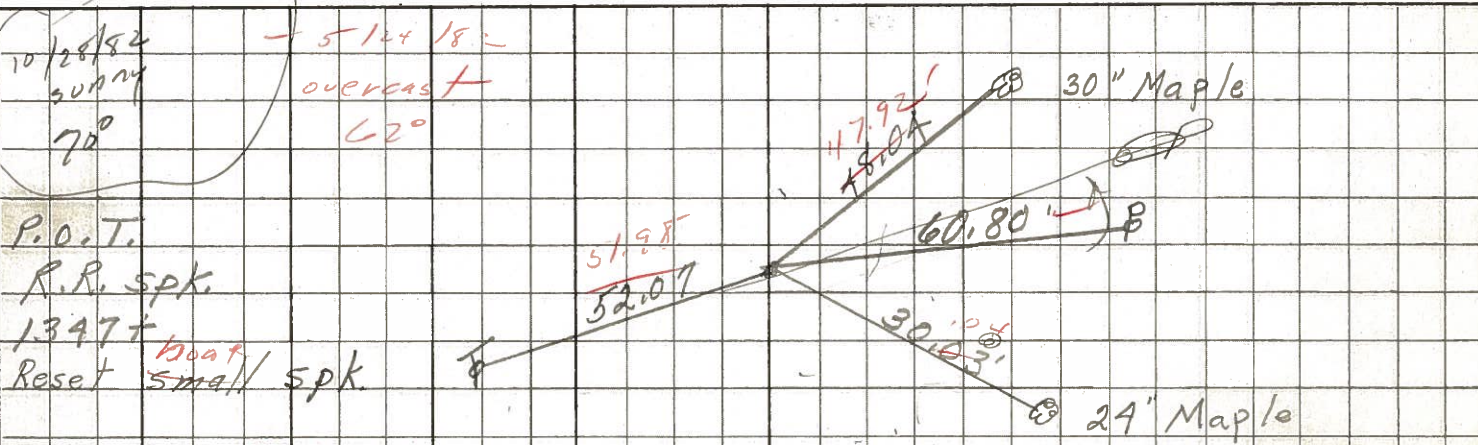


E.R./W U.S. #224

PERSONNEL TITLE PERSONNEL TITLE COUNTY Seneca DATE Windy
 Mosser _____ S. R. U.S. #224 WEATHER 60°
 Barbour _____ SEC. S.R. #100 to Attica TEMP. 3-29-68
 Redding _____

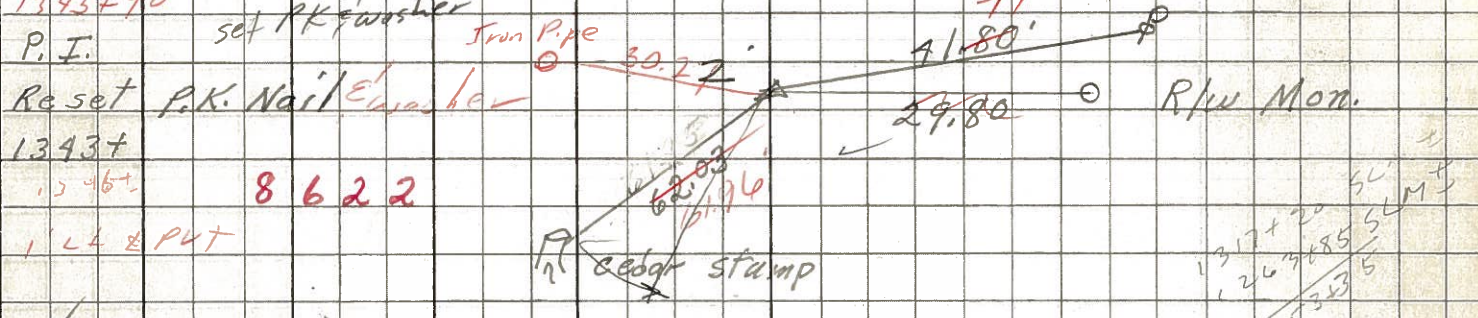
DESCRIPTION Ties for Control Points LEFT CENTER LINE RIGHT JOB NO.

76



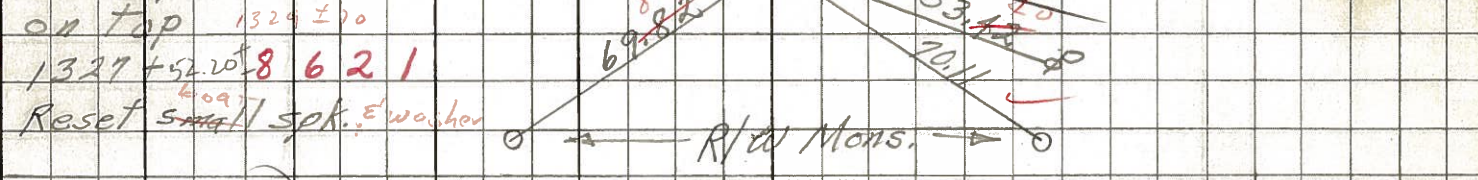
8 6 2 3
 1343+90 set PK & washer
 P.I. Iron Pipe
 Reset P.K. Nail & washer
 1343+
 1' LT & PVT

75



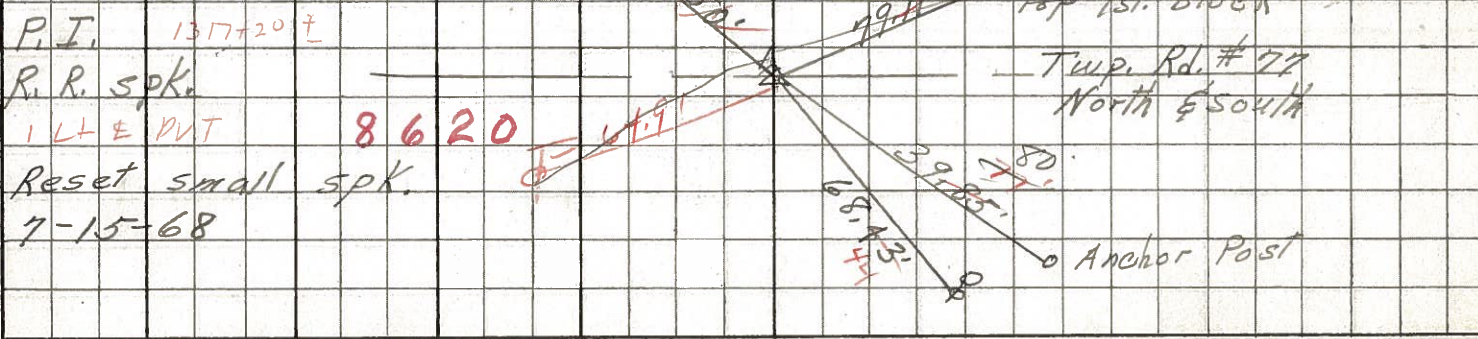
8 6 2 2
 PK set PK & washer
 P.I.
 R.R. spk.
 on top 1329 ± 70
 1327+52.20
 Reset small spk. & washer

74-A



8 6 2 1
 1314+97.41 1314+89.60
 1314+08.21 12+82.6
 1314+89.40 1327+52.0
 get PK & washer

73



8 6 2 0
 P.I. 1317+20 ±
 R.R. spk.
 1 LT & PVT
 Reset small spk.
 7-15-68

PERSONNEL TITLE PERSONNEL TITLE

COUNTY Seneca DATE 1-12-66

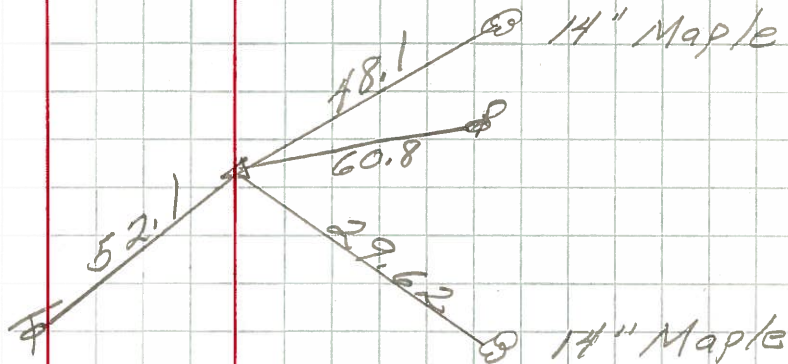
S. R. U.S. #224 WEATHER

SEC. TEMP.

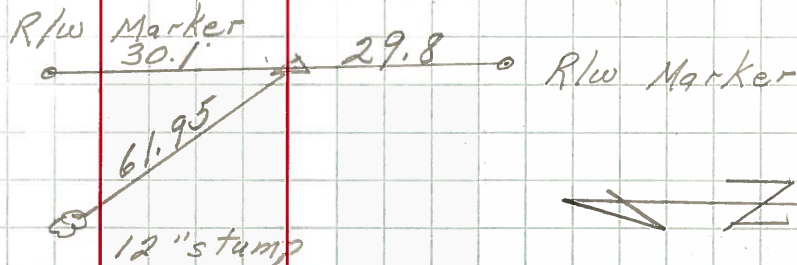
DESCRIPTION S.R. #19 - Attica JOB NO.

LEFT CENTER LINE RIGHT

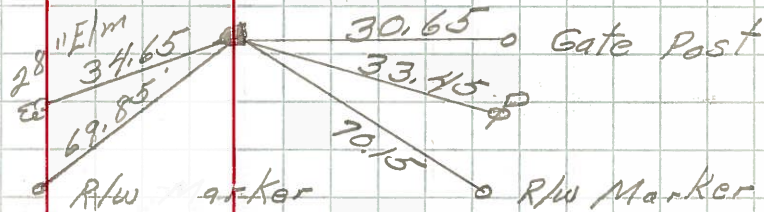
76
 31+98.4
 $\Delta = 0^{\circ}0'$
 R.R. spk. on $\frac{1}{2}$ R/W
 191



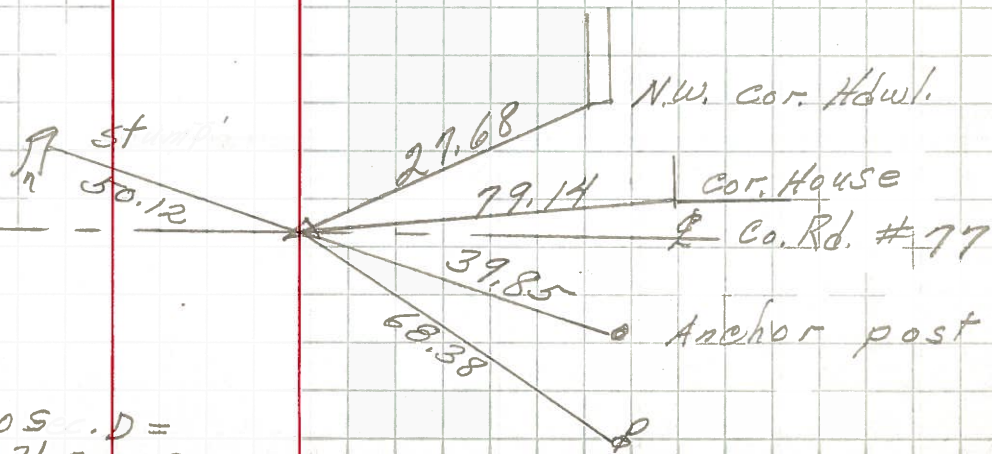
75
 P.I. 26+73.9
 $\Delta = 0^{\circ}03' R\frac{1}{2}$
 R.R. spk. on $\frac{1}{2}$ R/W
 190



74-A
 P.O.T.
 12+62.6
 $\Delta = 0^{\circ}0'$
 R.R. spk. on $\frac{1}{2}$ R/W
 189

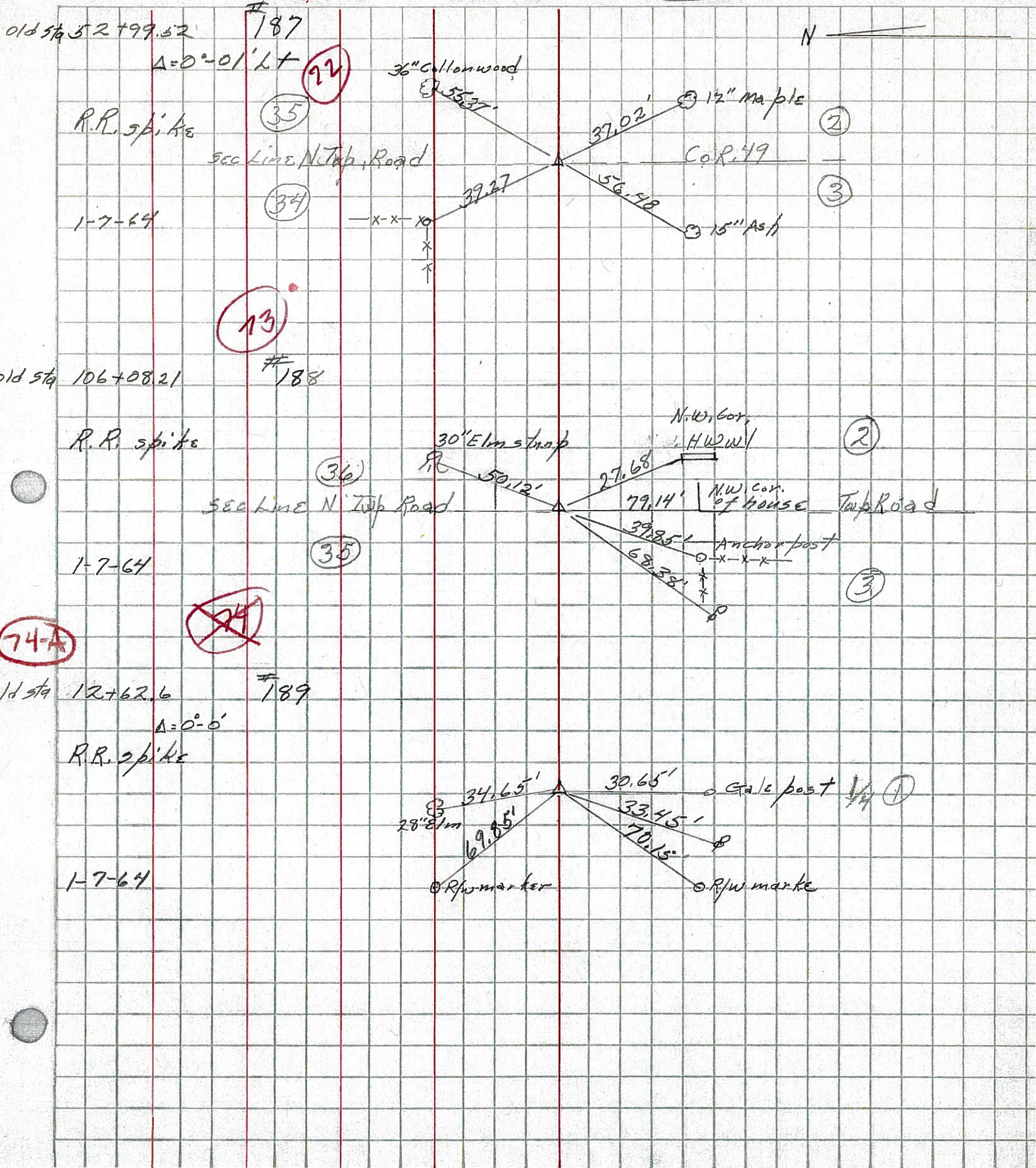


73
 P.I. 106+08.21
 R.R. spk. on $\frac{1}{2}$ R/W
 188



End Sec. 6 0+05.10 D = 106+08.21 sec. 6

PERSONNEL TITLE PERSONNEL TITLE COUNTY Seneca DATE _____
 E Krabill _____
 Y. Kowalski _____
 D. Brooks _____
 S. R. 224 WEATHER _____
 SEC. _____ TEMP. _____
 DESCRIPTION Scibio Bloom JOB NO. _____
 LEFT CENTER LINE RIGHT



PERSONNEL TITLE PERSONNEL TITLE

COUNTY Seneca

DATE checked 10-11-49

S. R. # 224

WEATHER

SEC. G-D-F-E

TEMP.

DESCRIPTION S.H. 272 From intersection of SR#19 to Huron Collins

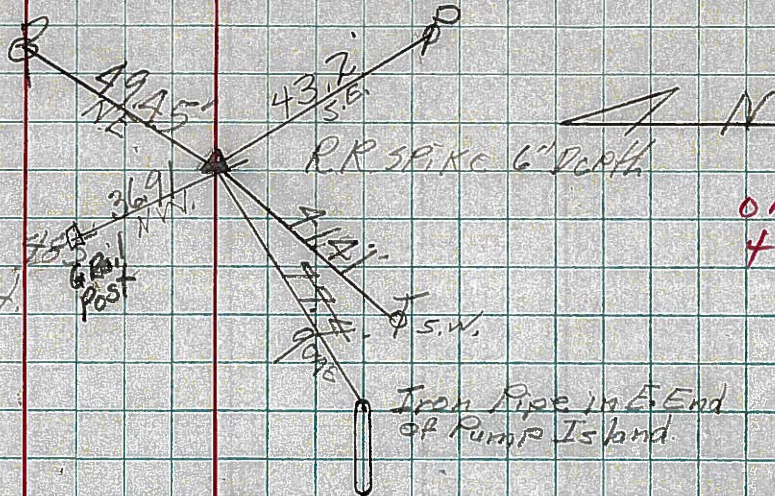
JOB NO.

68

Sta. 0+00

R.R. Spike on E/W
0+00 is in center of
intersection of S.H. 272
Sec. H.

#163



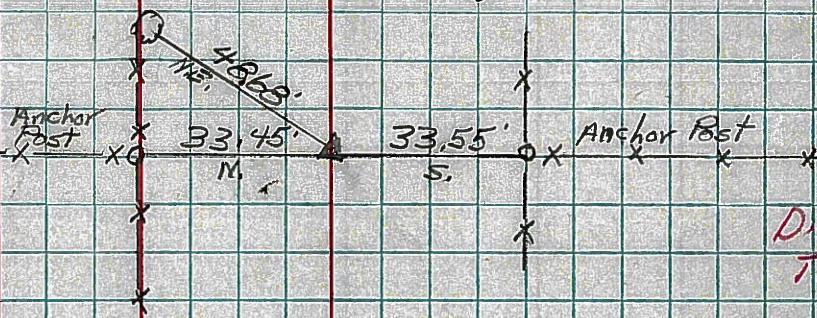
OK
4-25-60

70

Sta. 26+59.18

$\Delta = 0^\circ 04' Lt.$
R.R. Spike on E/W

#186



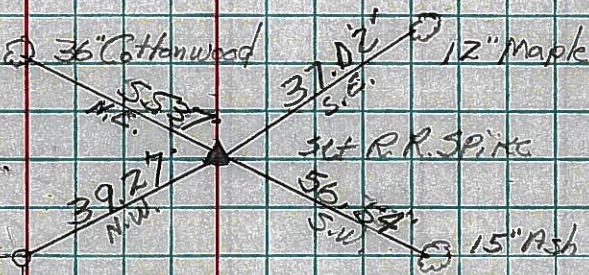
Did not find
Ties gone

72

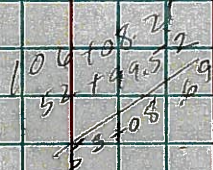
Sta. 52+99.52

$\Delta = 0^\circ 01' Lt.$
R.R. Spike on E/W

#187



OK
4-25-60

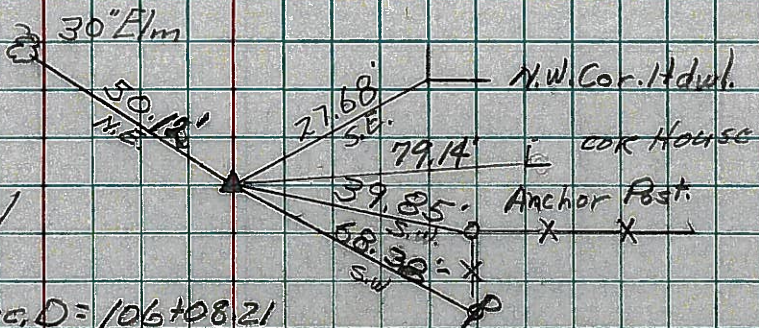


73

Sta. 106+08.21

R.R. Spike on E/W
4-25-59
End Sec. G, 0+00 Sec. D = 106+08.21
Sec G

#188



OK
4-25-60