

O.D.O.T. DISTRICT 2 SURVEY OFFICE (USE ONLY)

PERSONNEL

REFERENCE NO. 73 B

SHEET 19 OF 37

NOTES RHOADES

DATE 11/8/23

ROUTE US 224

H.C. AUBLE

WEATHER CLOUDY

COUNTY SENECA

R.C. ASTON

TEMP. 43°

TOWNSHIP SCIPIO

NIESE

SECTION 36

DWG BY RHOADES PID 101217

T 2 N R 16 E

TYPE MONUMENT MAG/WASHER

ON SURFACE - ~~BELOW~~ ON \_\_\_\_\_

OFFSET  $\odot$  PAVEMENT 1.5' LT : ~~RT~~

- TO - EDGE PAVEMENT

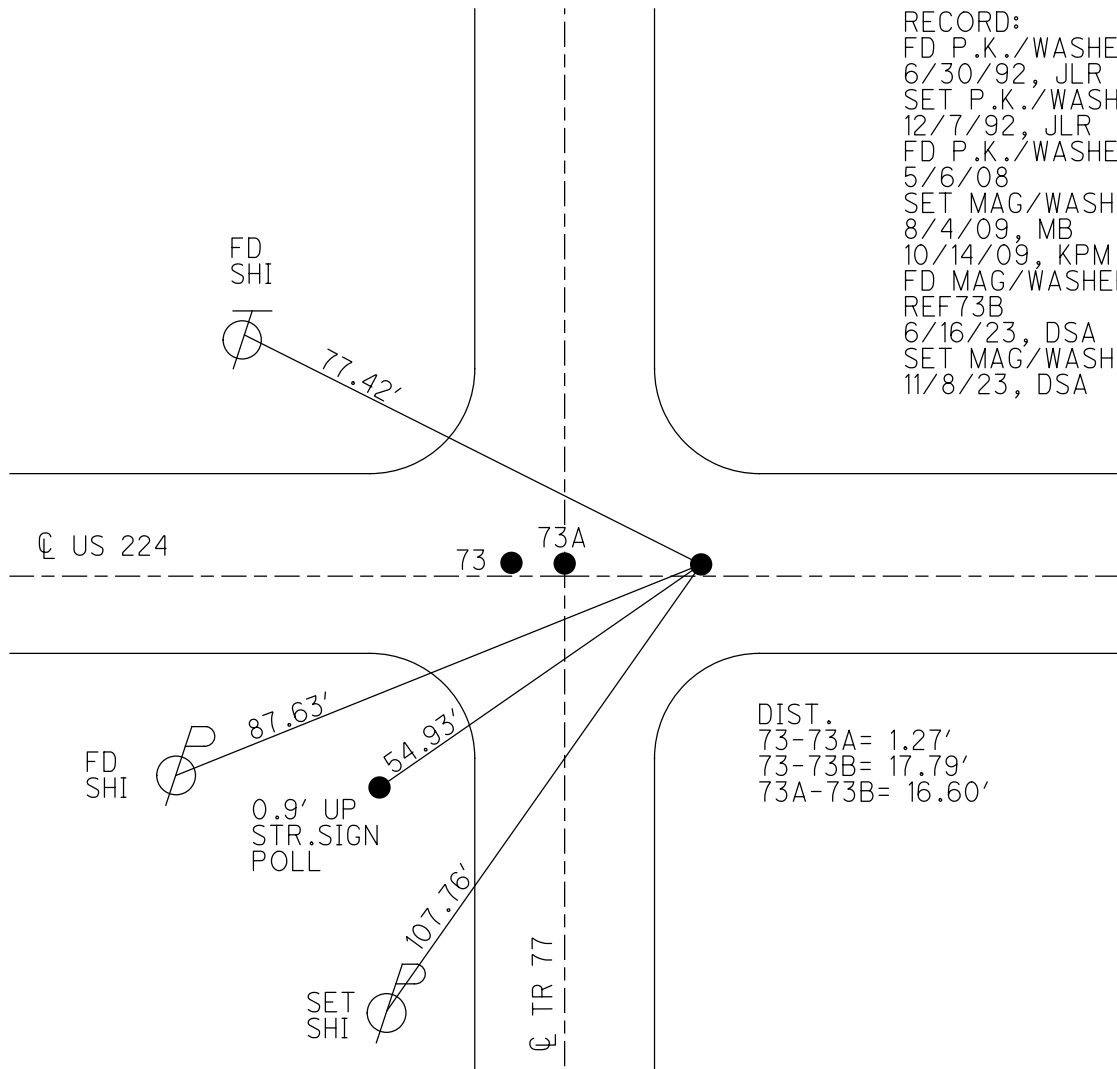
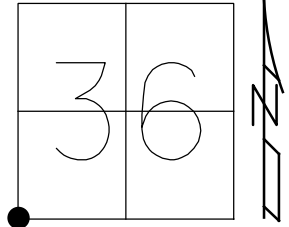
STATION: 1264+66.05

HORIZ.DATUM: NAD83 2011

GEOID: NAVD88 2018

GRID: NORTHING: 515713.443

EASTING: 1837079.836



RECORD:  
 FD P.K./WASHER  
 6/30/92, JLR  
 SET P.K./WASHER  
 12/7/92, JLR  
 FD P.K./WASHER  
 5/6/08  
 SET MAG/WASHER  
 8/4/09, MB  
 10/14/09, KPM  
 FD MAG/WASHER  
 REF73B  
 6/16/23, DSA  
 SET MAG/WASHER  
 11/8/23, DSA

DIST.  
 73-73A= 1.27'  
 73-73B= 17.79'  
 73A-73B= 16.60'