

O.D.O.T. DISTRICT 2 SURVEY OFFICE (USE ONLY)

PERSONNEL

REFERENCE NO. 74 A

SHEET 20 OF 37

NOTES RHOADES
 H.C. AUBLE
 R.C. ASTON
NIESE

DATE 11/8/23
 WEATHER CLOUDY
 TEMP. 43°

ROUTE US 224
 COUNTY SENECA
 TOWNSHIP SCIPIO
 SECTION 36

DWG BY RHOADES PID 101217

T 2 N R 16 E

TYPE MONUMENT MAG/WASHER

ON SURFACE - ~~BELOW~~ ON

OFFSET Q PAVEMENT 1.0' LT : ~~RT~~

10.2' TO LT EDGE PAVEMENT

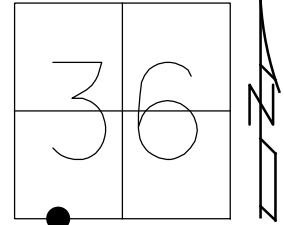
STATION: 1277+05.70

HORZ.DATUM: NAD83 2011

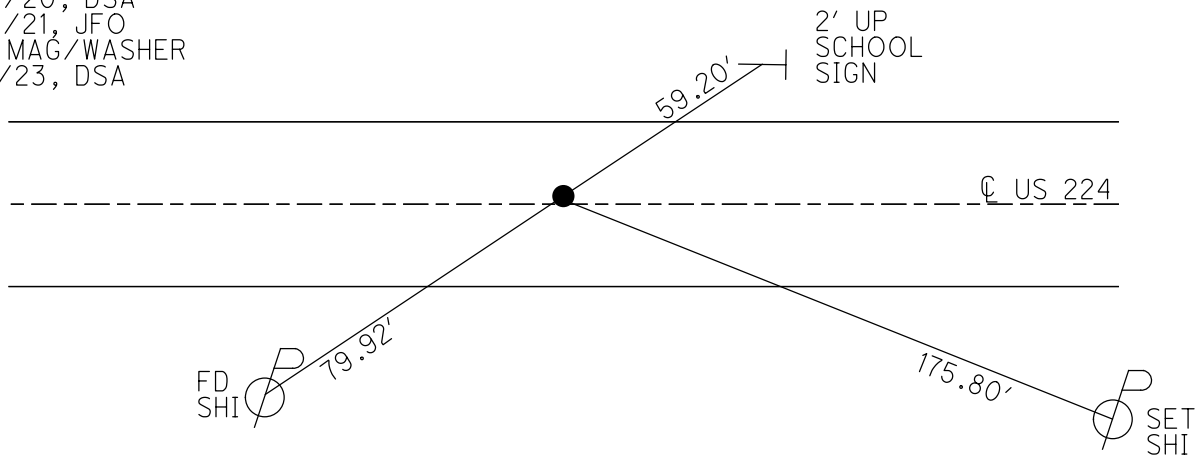
GEOID: NAVD88 2018

GRID: NORTHING: 515693.593

EASTING: 1838319.271



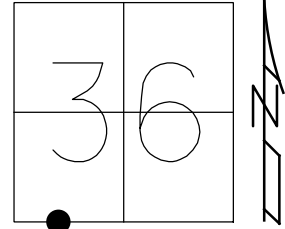
RECORD: P.O.T.
 STA. 1327+52.20
 FD BOAT SPIKE/WASHER
 ATOP R.R.SPIKE
 SET P.K./WASHER
 10/28/82
 SET P.K./WASHER
 12/7/92, JLR
 FD P.K./WASHER
 1/17/08
 SET MAG/WASHER
 8/3/09, MB
 10/14/09, KPM
 FD MAG/WASHER
 REFA74
 9/14/20, DSA
 3/17/21, JFO
 SET MAG/WASHER
 11/8/23, DSA



O.D.O.T. DISTRICT 2 SURVEY OFFICE (USE ONLY)

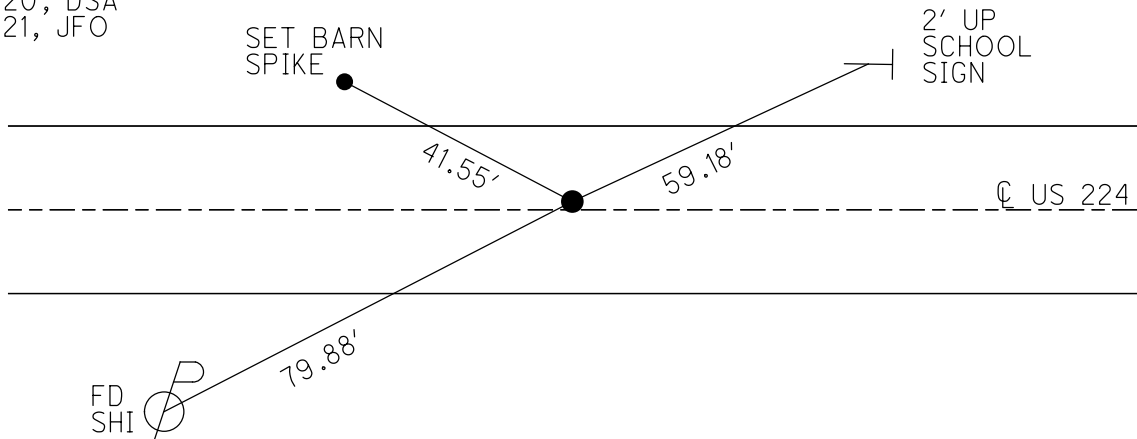
PERSONNEL _____ REFERENCE NO. 74 A SHEET 18 OF 33
 NOTES RHOADES DATE 3/17/21 ROUTE US 224
 H.C. O'DONNELL WEATHER FAIR COUNTY SENECA
 R.C. _____ TEMP. 45° TOWNSHIP SCIPIO
 DWG BY NIESE PID PAVE TRAIN SECTION 36
 T 2 N R 16 E

TYPE MONUMENT MAG/WASHER
 ON SURFACE - ~~BELOW~~ ON
 OFFSET Q PAVEMENT 1.0' LT : ~~RT~~
10.2' TO LT EDGE PAVEMENT
 STATION: 1277+05.70



HORZ. DATUM: NAD83 2011 GEOID: NAVD88 2012A
 GRID: NORTHING: 515693.593 EASTING: 1838319.198

RECORD: P.O.T.
 STA. 1327+52.20
 FD BOAT SPIKE/WASHER
 ATOP R.R. SPIKE
 SET P.K./WASHER
 10/28/82
 SET P.K./WASHER
 12/7/92, JLR
 FD P.K./WASHER
 1/17/08
 SET MAG/WASHER
 8/3/09, MB
 10/14/09, KPM
 FD MAG/WASHER
 REFA74
 9/14/20, DSA
 3/17/21, JFO



O.D.O.T. DISTRICT 2 SURVEY OFFICE

PERSONNEL

REFERENCE NO. 74 A

SHEET 17 OF 35

NOTES Moser

DATE 8-3-09

ROUTE U.S. 224

H.C. Moser

WEATHER Fair

COUNTY SENECA

R.C. Pietkowski

TEMP. +40°

TOWNSHIP SCIPLO

Goldberg

SECTION 36

T 2 N R 16 E

TYPE MONUMENT P.K./WASHER

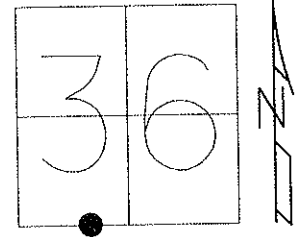
ON SURFACE - ~~BELOW~~ ON

LEFT - ☉ PAV'T = RIGHT 0.5'

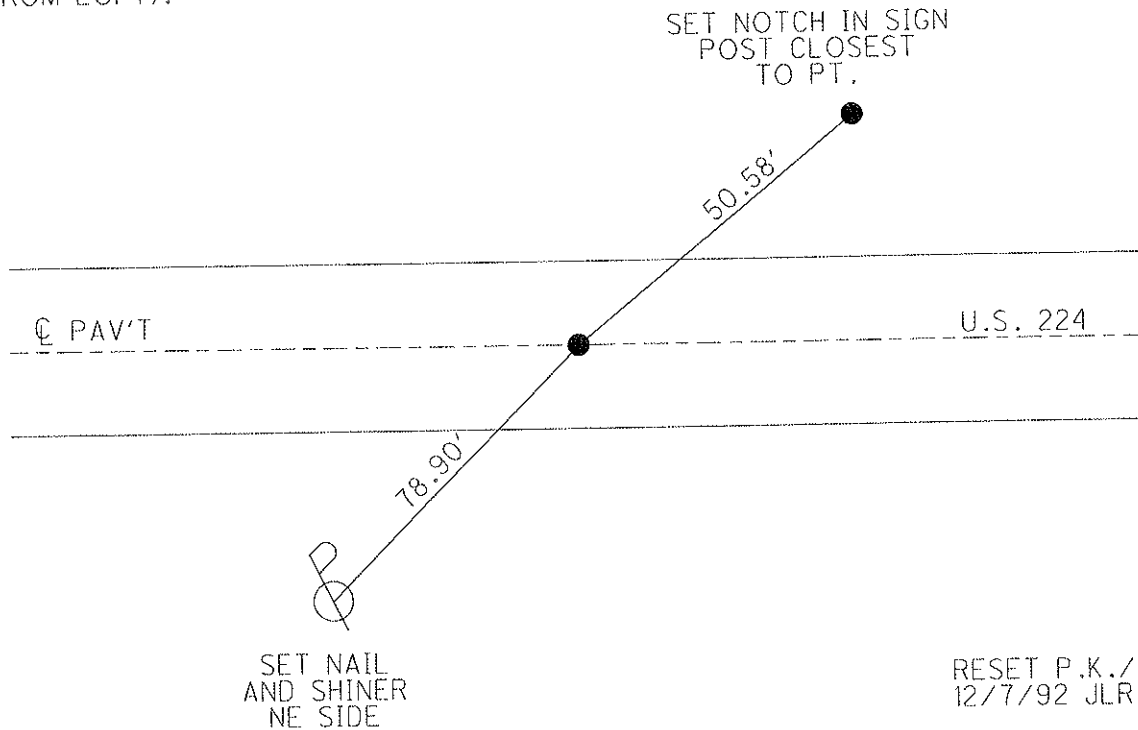
10.2' TO LT EDGE PAVEMENT

S.L.M. 1277 + 05.70

Grid: Northing: 515693.593 Easting: 1838319.198



RECORD: 10-28-82
 P.O.T. STA 1327+52.20
 SET PK & WASHER ATOP
 BOAT SPK. & W. ATOP
 R.R. SPK-IRON PIN FIELD BOOK #57
 (FROM LOFT).



RESET P.K./WASHER
 12/7/92 JLR

FD P.K./WASHER
 1/17/08

SET MAG/WASHER
 8/3/09 MB

RESET MAG/WASHER
 10/14/09 KPM

O.D.O.T. DISTRICT 2 SURVEY OFFICE

PERSONNEL

REFERENCE NO. 74-A

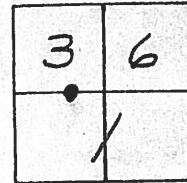
SHEET 14 OF 32

NOTES Cheney
 H.C. RIPPIE
 R.C. BARBOUR
Geyman

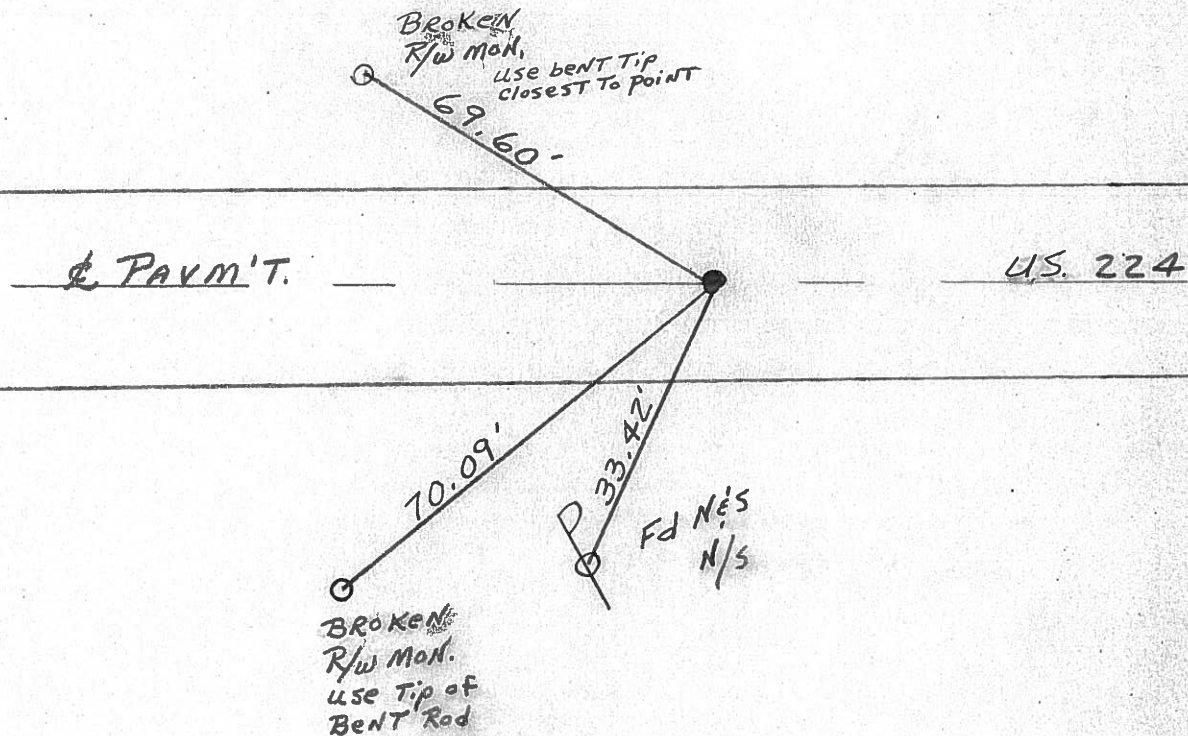
DATE 16-30-92
 WEATHER Cloudy
 TEMP. 55°

ROUTE U.S. 224
 COUNTY Seneca
 TOWNSHIP Scipio & Bloom
 SECTION 36 & 1
 T. 2 N R. 16 E

TYPE MONUMENT Reset P.K. & W. 12-07-92 J.L.R.
 ON SURFACE - BELOW yes
 LEFT - 0 PAV'T. - RIGHT 0.5'
9.5 TO LT. EDGE PAVEMENT
 S.L.M. 1276+63



Record: 10-28-82
 P.O.T. STA. 1327+52.20+
 SET P.K. & WASHER ATOP boat spk. & W.
 ATOP R.R. SPK. - IRON PIN Field Book #57
 (from Left)



County Seneca S.R. 224

Township Scipio & Bloom

Section 36 & 1

T²₁N, R¹⁶₁₆E

Personnel Cronin

Ripple

Geyman

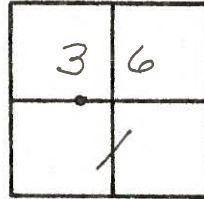
Mosser

Barbour

Date 10/28/82 Drawn 11/02/82

Weather sunny

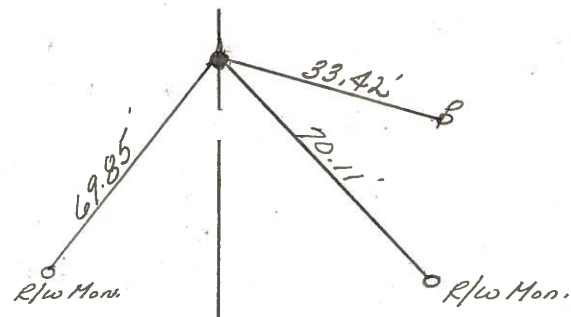
Temp. 70°



74-A



P.O.T.
1327 + 52.20 ±
Set P.K. & washer atop
boat spike & washer atop
R.R. spike - Iron Pin
Field Book # 57 (from left)



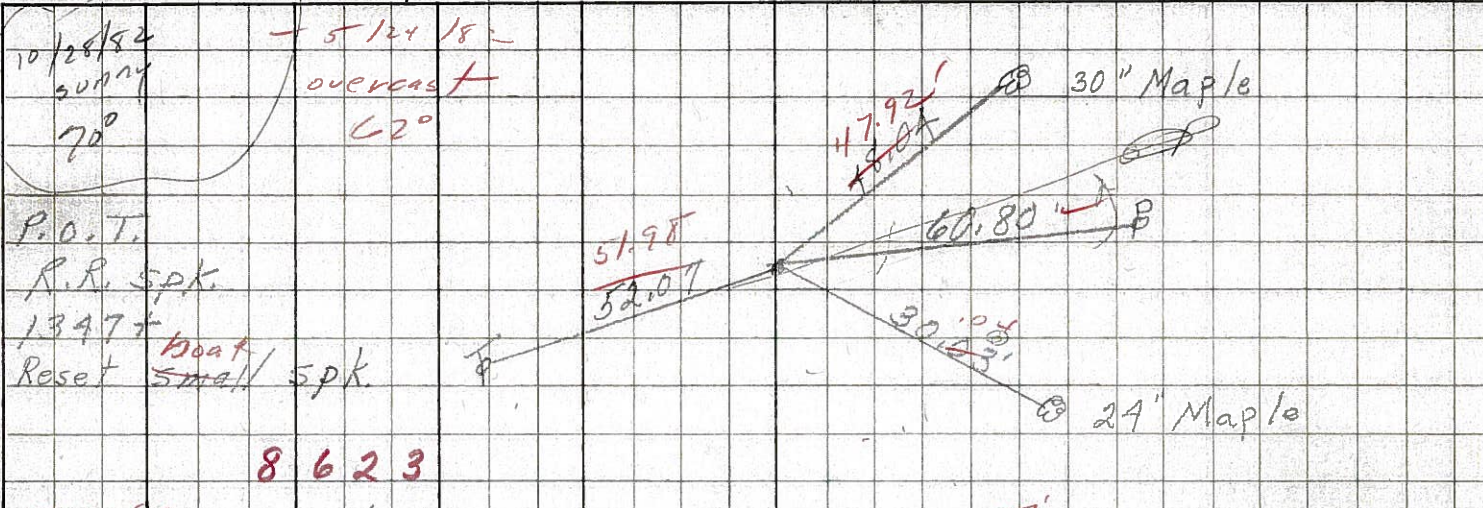
Q R/W U.S. # 2247

PERSONNEL TITLE PERSONNEL TITLE
 Schneider _____ Potts _____
 Mosser _____
 Barbour _____
 Redding _____

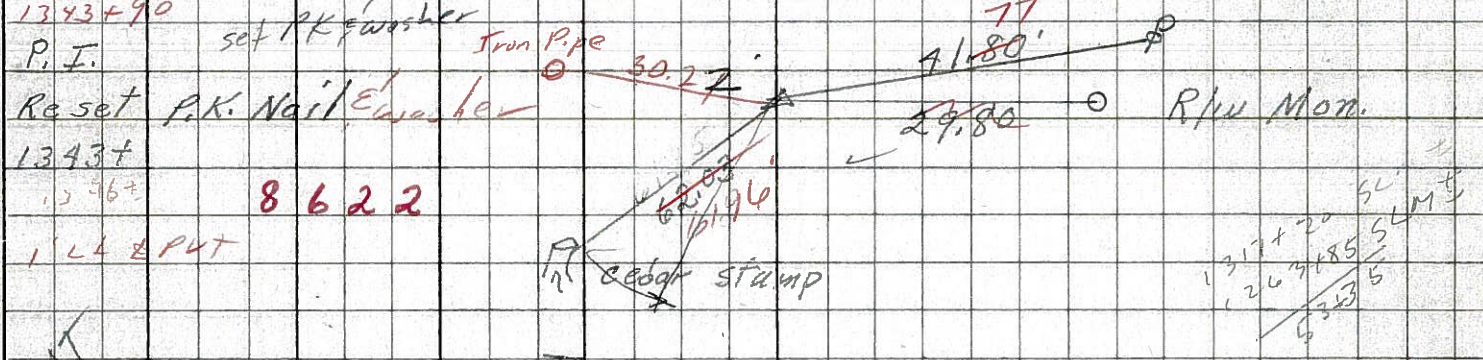
COUNTY Seneca DATE Windy
 S. R. U.S.#224 WEATHER 60°
 SEC. S.R.#100 to Attica TEMP. 3-29-68

DESCRIPTION Ties for Control Points JOB NO. _____
 LEFT CENTER LINE RIGHT

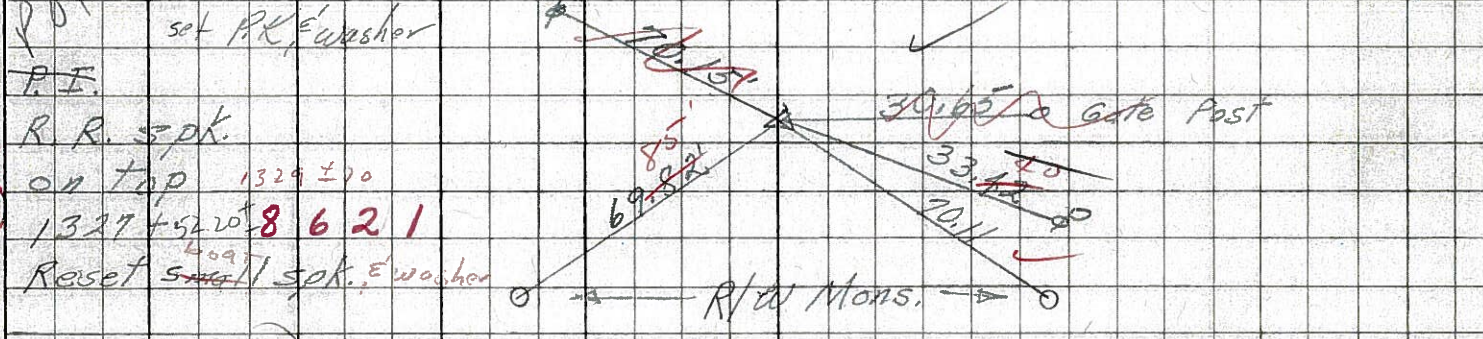
76



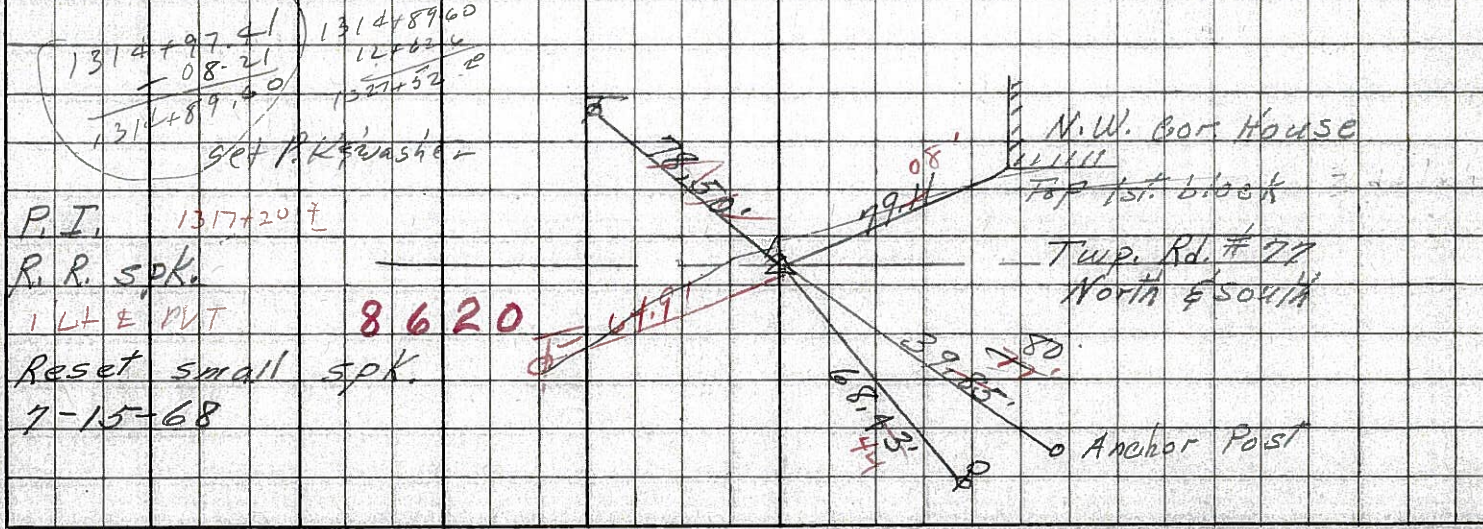
75



74-A



73

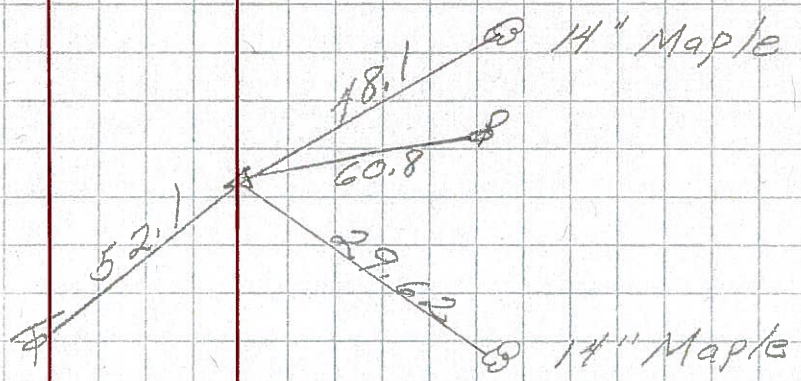


PERSONNEL _____ TITLE _____ PERSONNEL _____ TITLE _____
 COUNTY Seneca DATE 1-12-66
 S. R. U.S. #224 WEATHER _____
 SEC. _____ TEMP. _____
 DESCRIPTION S.R. #19 - Attica JOB NO. _____

76

31+98.4
 $\Delta = 0^{\circ}0'$
 R.R. spk. on E R/W

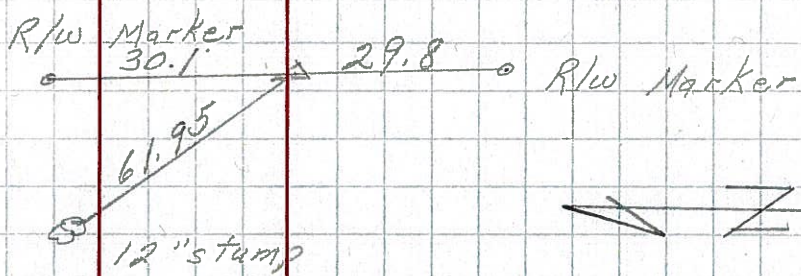
191



75

P.I. 26+73.9
 $\Delta = 0^{\circ}03' RT$
 R.R. spk. on E R/W

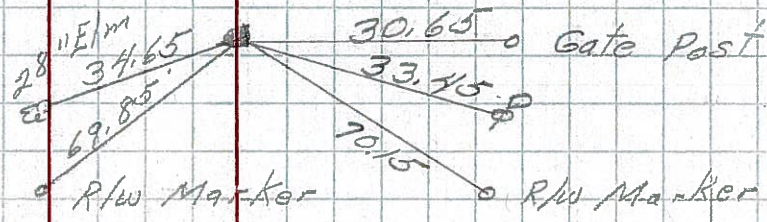
190



74-A

P.O.T.
 12+62.6
 $\Delta = 0^{\circ}0'$
 R.R. spk. on E R/W

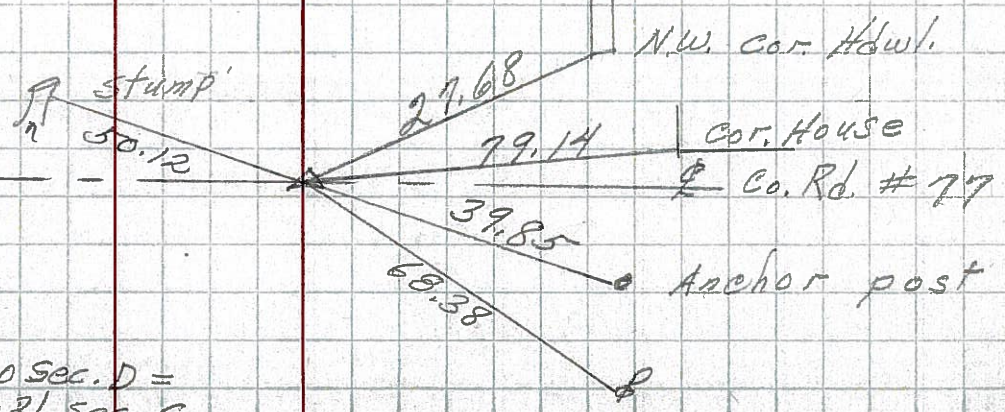
189



73

P.I. 106+08.21
 R.R. spk. on E R/W

188



End Sec. G 0+00 Sec. D =
 106+08.21 Sec. G

PERSONNEL TITLE PERSONNEL TITLE

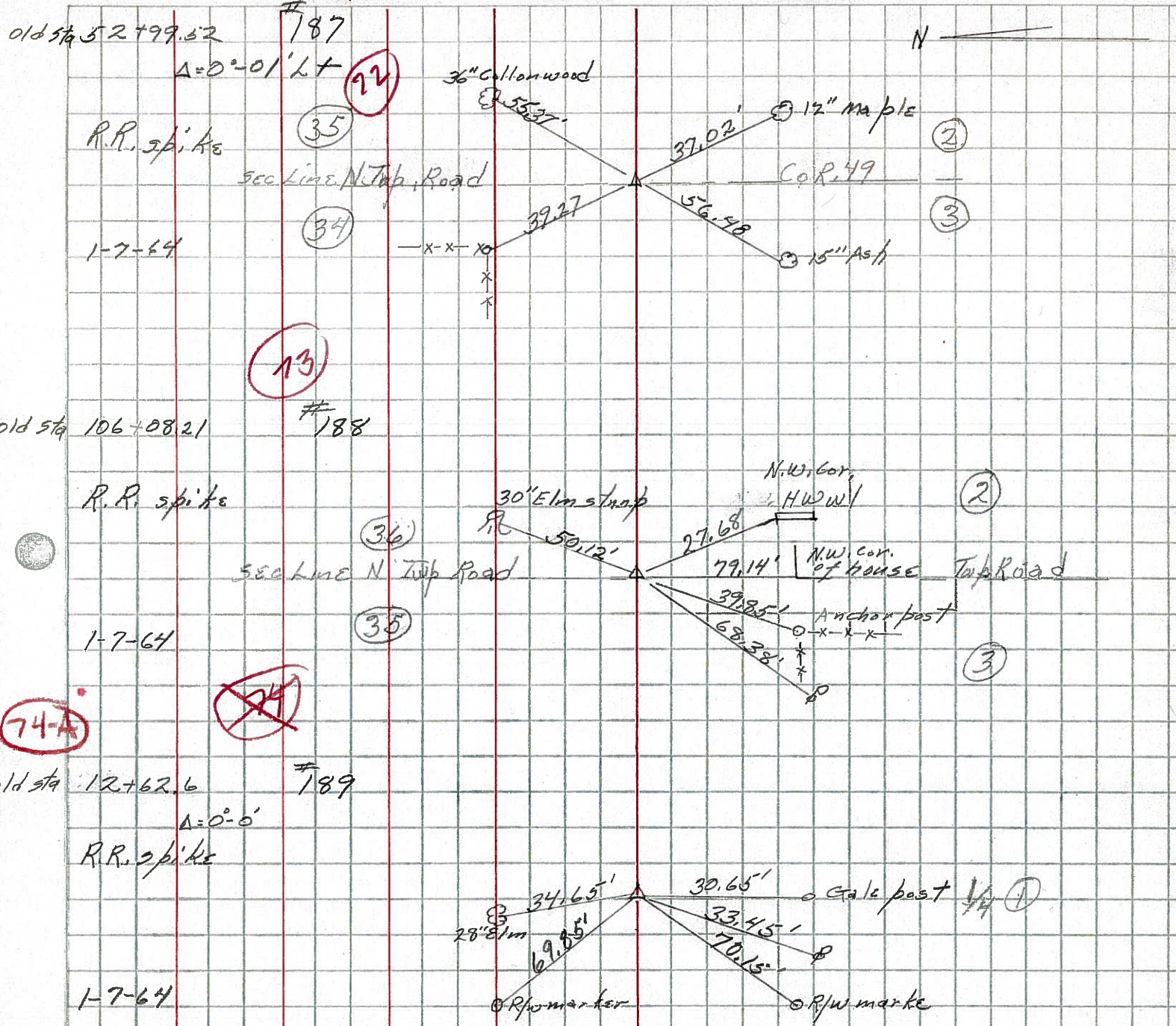
COUNTY Seneca DATE

E Krabill
V. Kowalski
D. Brooks

S. R. 224 WEATHER

SEC. TEMP.

DESCRIPTION Scio Bloom JOB NO.



PERSONNEL TITLE PERSONNEL TITLE

COUNTY Seneca

DATE checked 10-11-96

S. R. #224

WEATHER

SEC. G-D-F-E

TEMP.

DESCRIPTION SH. 272

JOB NO.

LEFT

CENTER LINE

RIGHT

74A

Sta. 12+62.6

$\Delta = 0^{\circ} 0'$

R.R. Spike on ϕ R/W

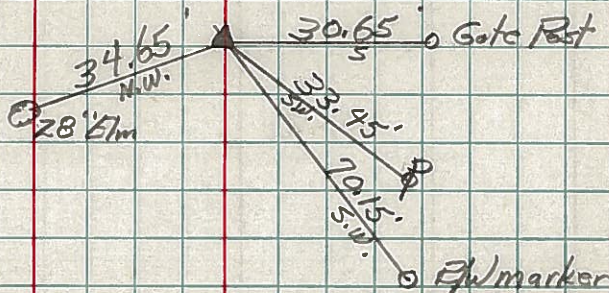
6-25-59

#

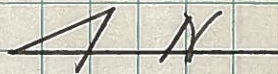
8-17-59

189

Reset



$106.48.21$
 $+ 12.42.00$
 $118.90.21$



75

Sta. 26+73.9

$\Delta = 0^{\circ} 03' Rt.$

R.R. Spike on ϕ R/W

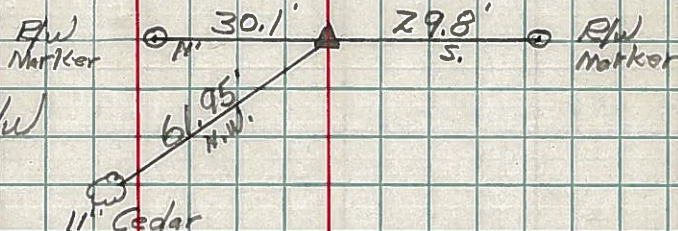
6-25-59

#

8-17-59

190

Reset



76

Sta. 31+98.4

$\Delta = 0^{\circ} 0'$

R.R. Spike on ϕ R/W

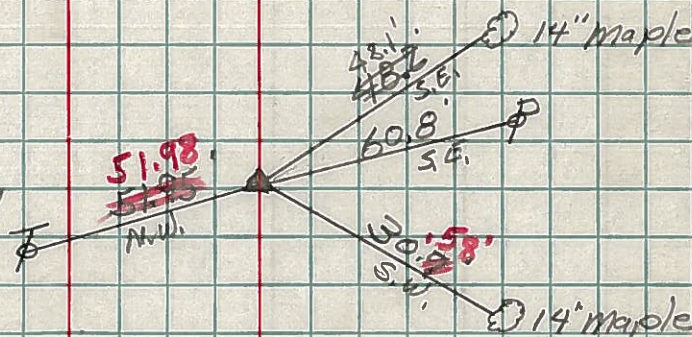
6-26-59

#

8-17-59

191

Reset



78

Sta. 53+47.9

$\Delta = 0^{\circ} 03' Lt.$

R.R. Spike Set over

Car. Stone ϕ R/W

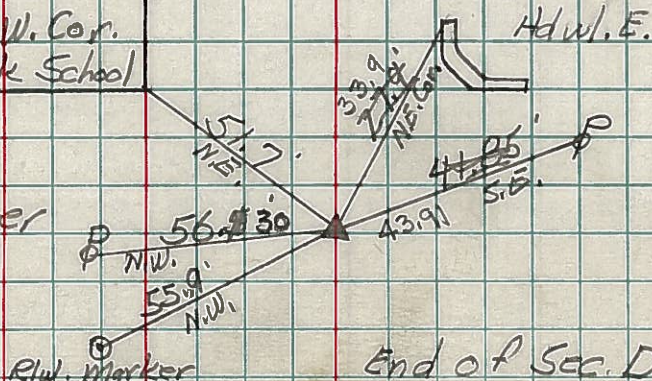
6-26-59

#

8-18-59

192

Reset



End of Sec. D. Start Sec. F
 Sta. 53+47.9 Sec. D = Sta. 54+00
 Sec. F.