

O.D.O.T. DISTRICT 2 SURVEY OFFICE (USE ONLY)

PERSONNEL

REFERENCE NO. 75

SHEET 21 OF 37

NOTES RHOADES
 H.C. AUBLE
 R.C. ASTON
NIESE

DATE 11/8/23
 WEATHER CLOUDY
 TEMP. 43°

ROUTE US 224
 COUNTY SENECA
 TOWNSHIP SCIPIO
 SECTION 36

DWG BY RHOADES PID 101217

T 2 N R 16 E

TYPE MONUMENT MAG/WASHER

ON SURFACE - ~~BELOW~~ ON

OFFSET 0 PAVEMENT 1' LT : ~~RT~~
9' TO LT EDGE PAVEMENT

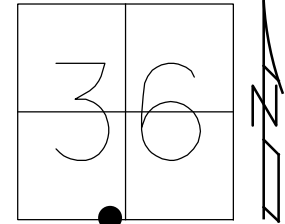
STATION: 1291+16.61

HORZ. DATUM: NAD83 2011

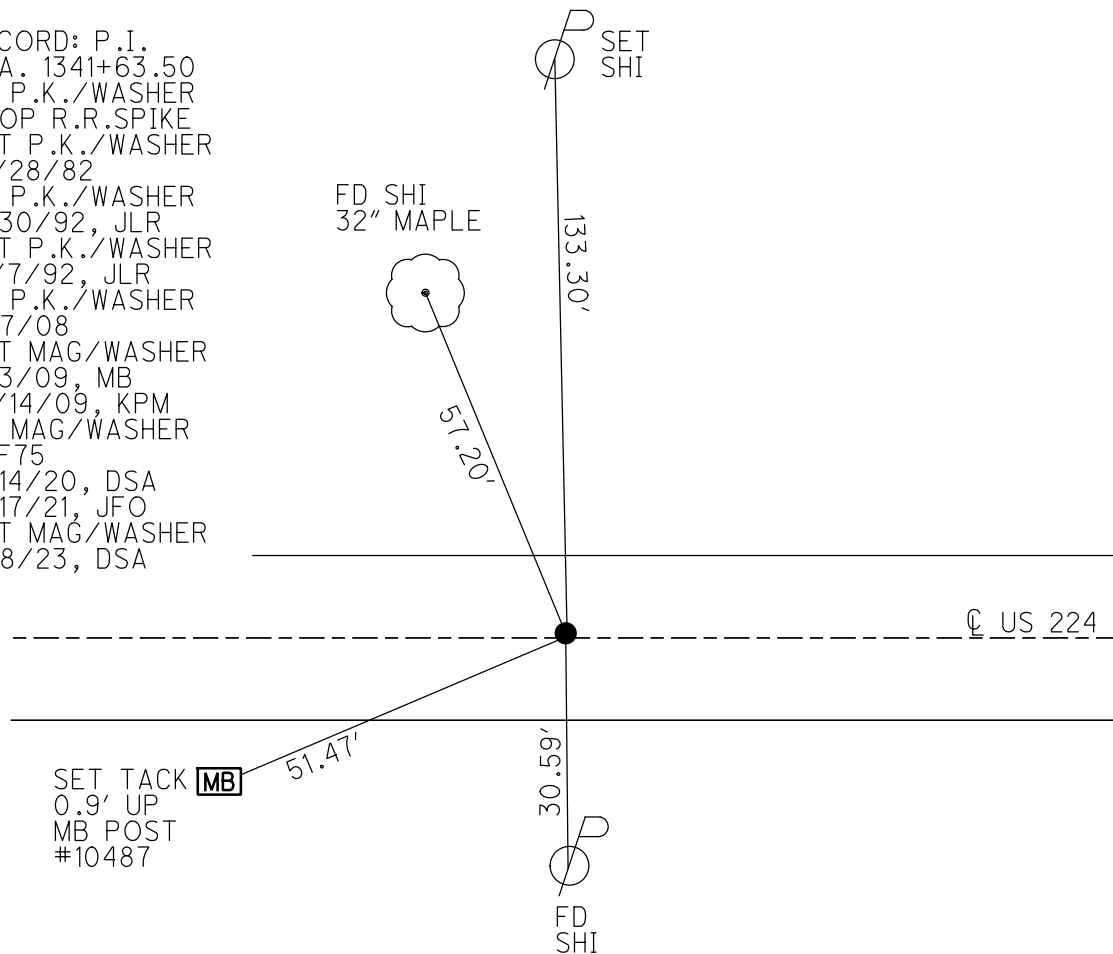
GEOID: NAVD88 2018

GRID: NORTHING: 515672.007

EASTING: 1839729.934



RECORD: P.I.
 STA. 1341+63.50
 FD P.K./WASHER
 ATOP R.R.SPIKE
 SET P.K./WASHER
 10/28/82
 FD P.K./WASHER
 6/30/92, JLR
 SET P.K./WASHER
 12/7/92, JLR
 FD P.K./WASHER
 1/17/08
 SET MAG/WASHER
 8/3/09, MB
 10/14/09, KPM
 FD MAG/WASHER
 REF75
 9/14/20, DSA
 3/17/21, JFO
 SET MAG/WASHER
 11/8/23, DSA



O.D.O.T. DISTRICT 2 SURVEY OFFICE (USE ONLY)

PERSONNEL _____

REFERENCE NO. 75

SHEET 19 OF 33

NOTES RHOADES

DATE 3/17/21

ROUTE US 224

H.C. O'DONNELL

WEATHER FAIR

COUNTY SENECA

R.C. _____

TEMP. 50°

TOWNSHIP SCIPIO

DWG BY NIESE

PID PAVE TRAIN

SECTION 36

T 2 N R 16 E

TYPE MONUMENT MAG/WASHER

ON SURFACE - ~~BELOW~~ ON

OFFSET 9' LT PAVEMENT 1' LT : ~~RT~~

9' TO LT EDGE PAVEMENT

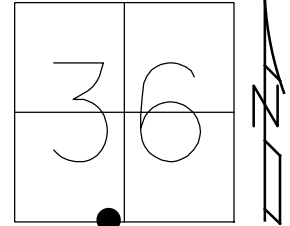
STATION: 1291+16.61

HORZ. DATUM: NAD83 2011

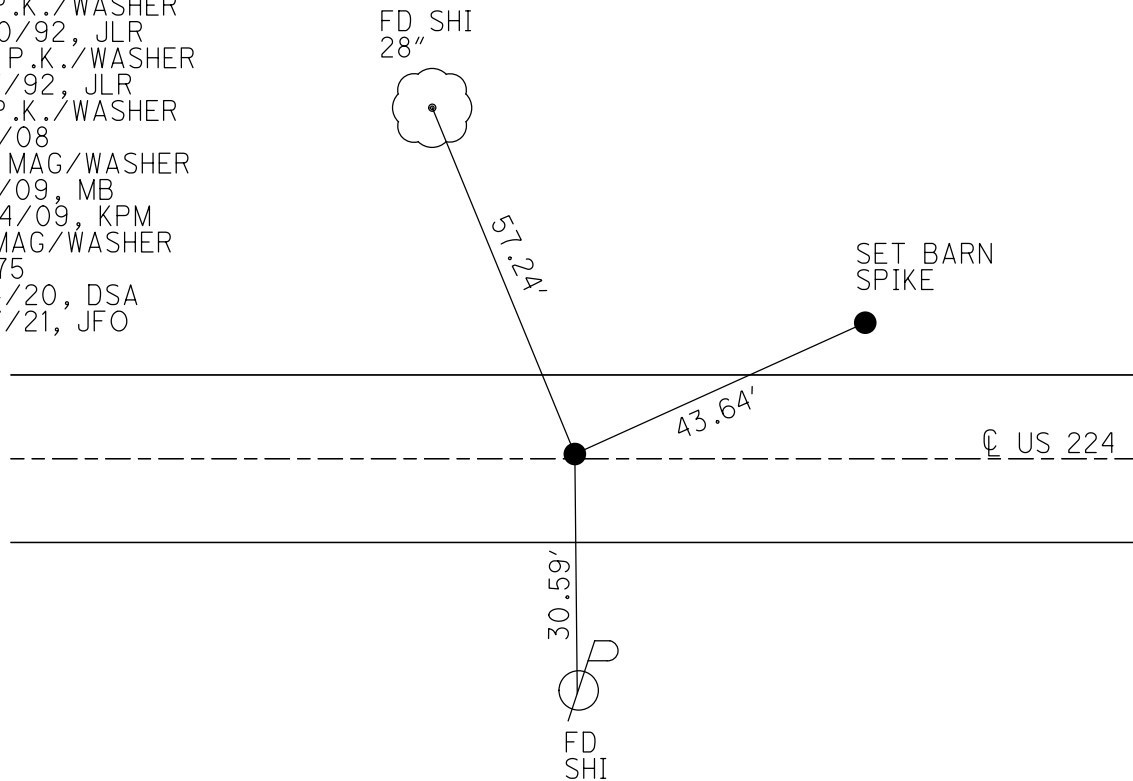
GEOID: NAVD88 2012A

GRID: NORTHING: 515672.030

EASTING: 1839729.872



RECORD: P.I.
 STA. 1341+63.50
 FD P.K./WASHER
 ATOP R.R.SPIKE
 SET P.K./WASHER
 10/28/82
 FD P.K./WASHER
 6/30/92, JLR
 SET P.K./WASHER
 12/7/92, JLR
 FD P.K./WASHER
 1/17/08
 SET MAG/WASHER
 8/3/09, MB
 10/14/09, KPM
 FD MAG/WASHER
 REF75
 9/14/20, DSA
 3/17/21, JFO



O.D.O.T. DISTRICT 2 SURVEY OFFICE

PERSONNEL

REFERENCE NO. 75

SHEET 18 OF 35

NOTES Moser

DATE 8-4-09

ROUTE U.S. 224

H.C. Moser

WEATHER Fair

COUNTY SENECA

R.C. Pietkowski

TEMP. +40°

TOWNSHIP SCIPLO

Goldberg

SECTION 36

T 2 N R 16 E

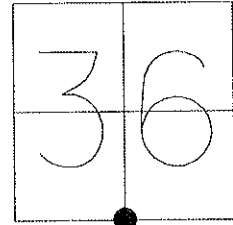
TYPE MONUMENT P.K./WASHER

ON SURFACE - ~~BELOW~~ ON

LEFT - Q PAV'T - ~~RIGHT~~ 1'

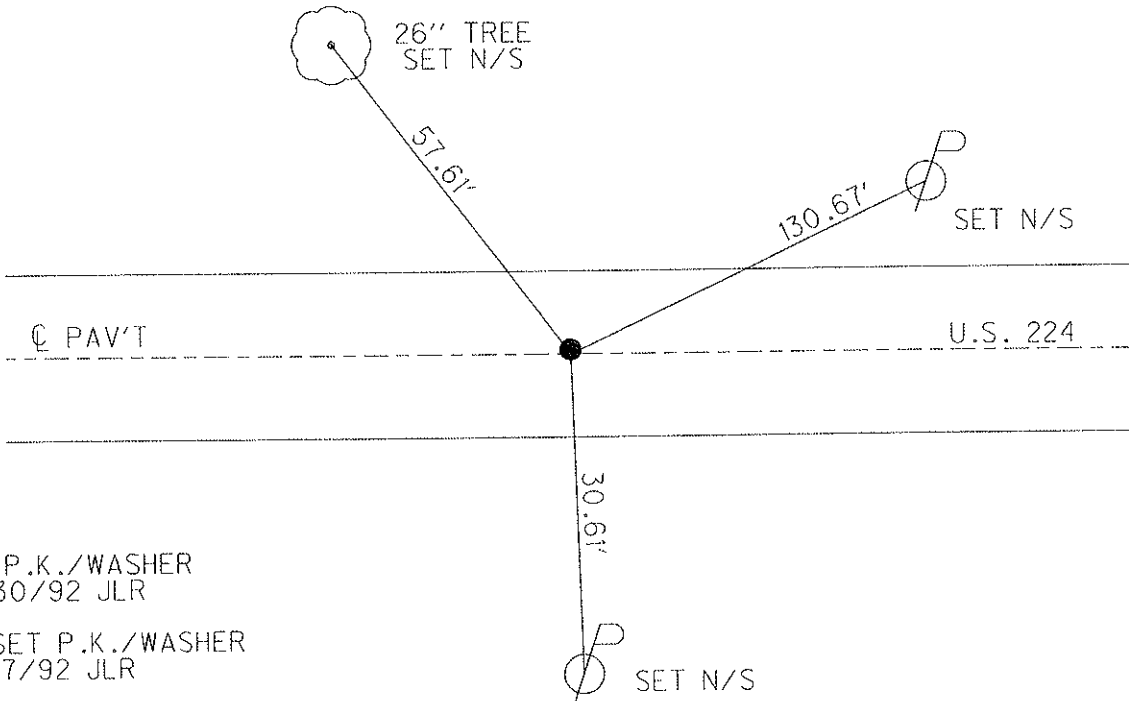
9' TO LT. EDGE PAVEMENT

S.L.M. 1291 + 16.61



Grid: Northing: 515672.030 Easting: 1839729.872

RECORD: 10-28-82
 PI STA 1341+63.50
 SET PK&WASHER ATOP
 PK&WASHER ATOP RR SPK
 STONE - FIELD BOOK #57
 (FROM LOFT).



FD P.K./WASHER
 6/30/92 JLR

RESET P.K./WASHER
 12/7/92 JLR

FD P.K./WASHER
 1/17/08

SET MAG/WASHER
 8/4/09 MB
 ALL POINTS TIED
 WITH A 200' TAPE.

RESET MAG/WASHER
 10/14/09 KPM

O.D.O.T. DISTRICT 2 SURVEY OFFICE

PERSONNEL

REFERENCE NO. 75

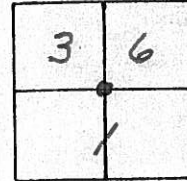
SHEET 15 OF 32

NOTES Cheney
 H.C. RIPPLE
 R.C. BARBOUR
GEYMAN

DATE 6-30-92
 WEATHER Cloudy
 TEMP. 55°

ROUTE U.S. 224
 COUNTY Seneca
 TOWNSHIP Scipio & Bloom
 SECTION 36 & 1
T² N R¹⁶ E

TYPE MONUMENT Ed. P.K. Washer Reset P.K. Washer
 ON SURFACE - BELOW yes 12-07-92
J.L.R.
 LEFT - C PAV'T. - RIGHT 1'
9' TO LT. EDGE PAVEMENT
 S.L.M. 1290 + 76

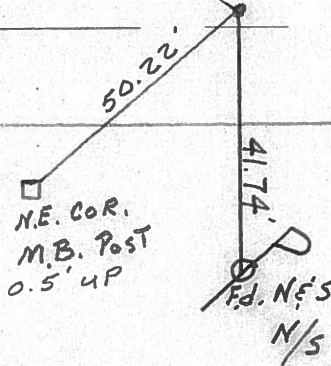


Record, 10-28-82
 P.I. STA. 1341 + 63.50 ±
 SET P.K. WASHER AT TOP P.K. WASHER
 ATOP R.R. SPIKE
 Stone - Field Book #57 (from Left)

CEDAR STUMP
 SET N/S
 SE 1/3
 62.05'

Q. PAVM'T.

U.S. 224



County Seneca S.R. 224

Date 10/28/82 Drawn 11/02/82

Township Scipio & Bloom

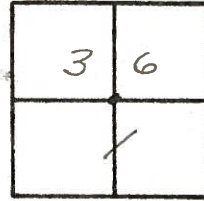
Weather sunny

Section 36 & 1

Temp. 70°

T²₁N, R¹⁶₁E

Personnel Cronin



Ripple

Geyman

Mosser

Barbour

75



P.I

1341 + 63.50 ±

Set P.K. & washer atop P.K.

& washer atop C.R. spike

Stone - Field Book #57 (from loft)

I. Pipe 30.22

41.77

61.96

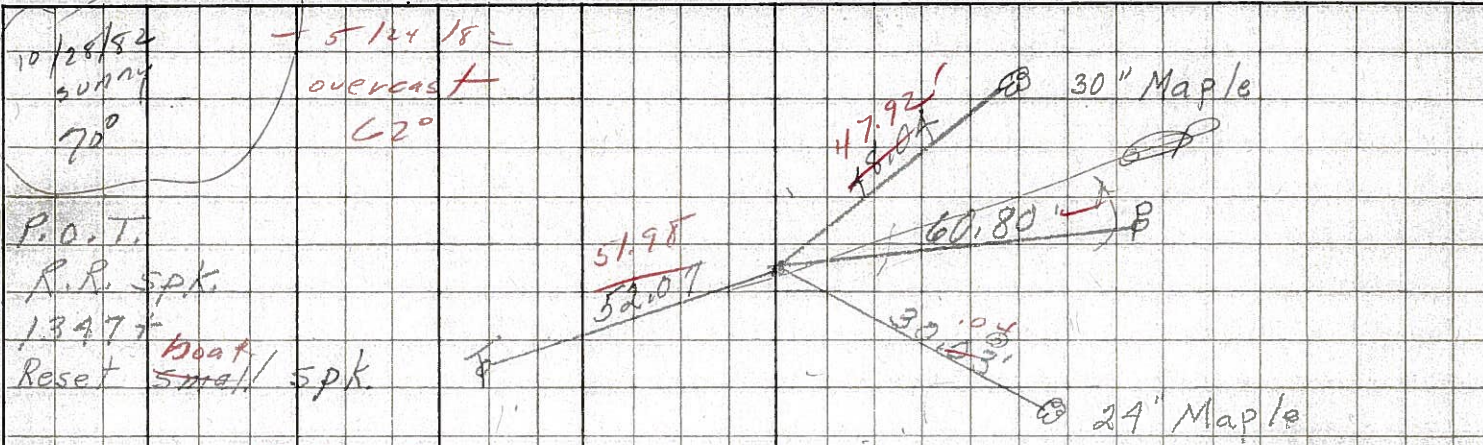
cedar stump

S. R/w U.S. #2247

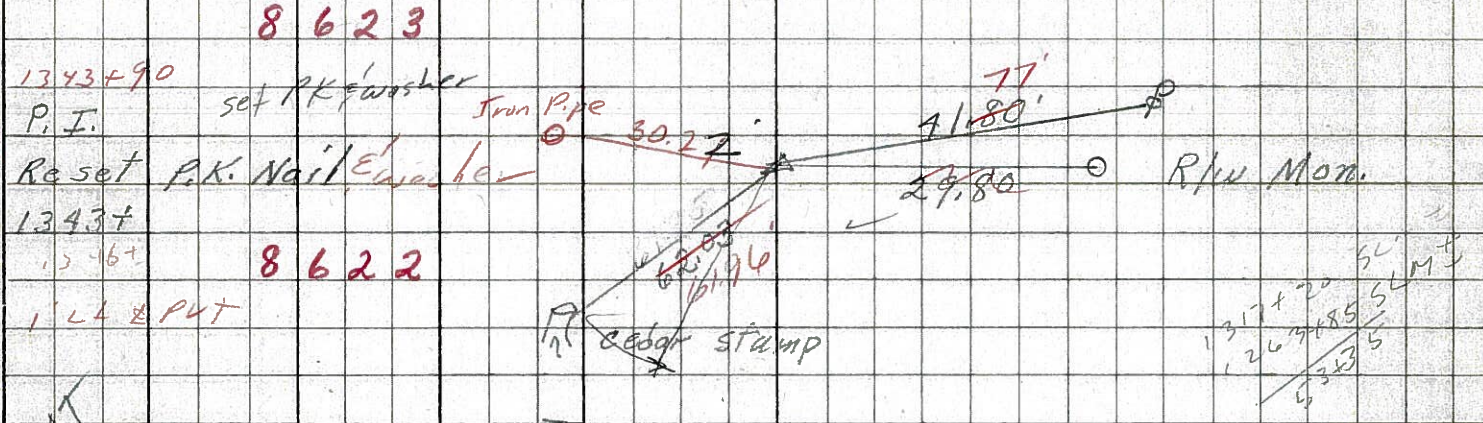
| PERSONNEL | TITLE | PERSONNEL | TITLE | COUNTY | DATE |
|-----------|-------|-----------|-------|--------------------------|---------------|
| Schneider | | Potts | | Seneca | Windy |
| Mosser | | | | S. R. U.S. #22A | WEATHER 60° |
| Barbour | | | | SEC. S.R. #100 to Attica | TEMP. 3-29-68 |
| Redding | | | | | |

DESCRIPTION Ties for Control Points LEFT CENTER LINE RIGHT JOB NO.

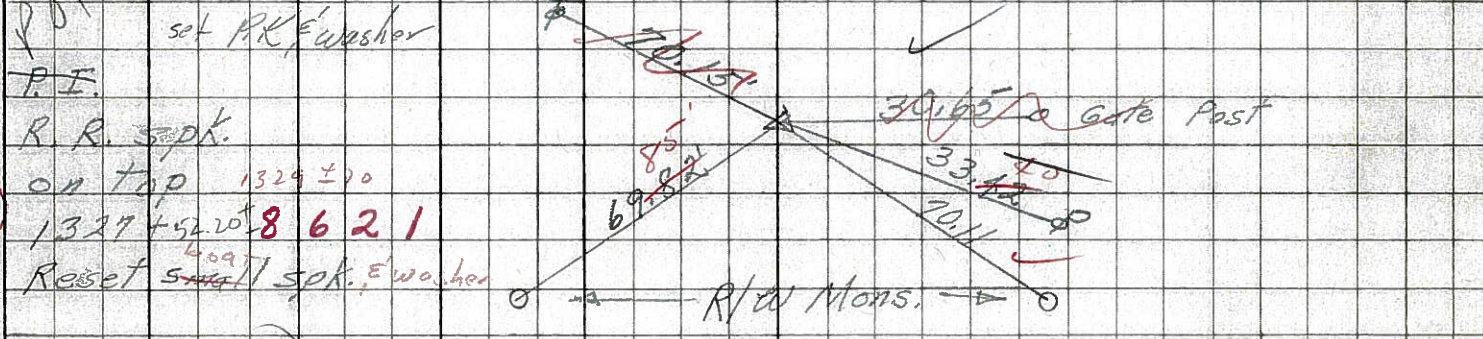
76



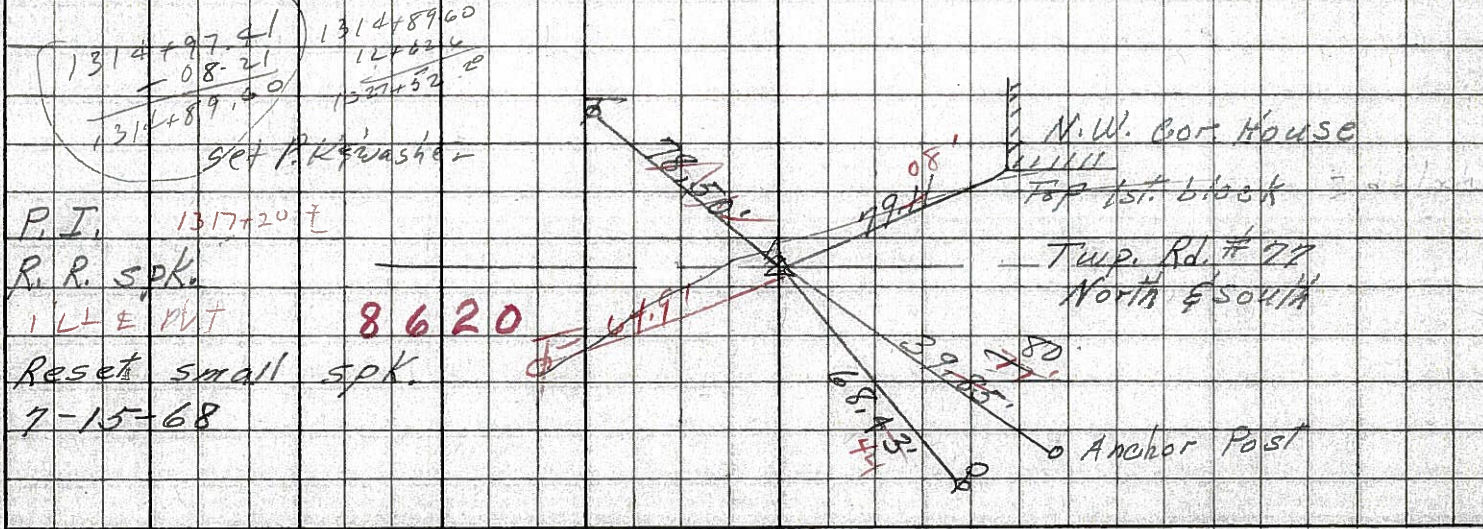
75



74-A



73



PERSONNEL TITLE PERSONNEL TITLE

COUNTY Seneca DATE 1-12-66

S. R. U.S. #224 WEATHER

SEC. TEMP.

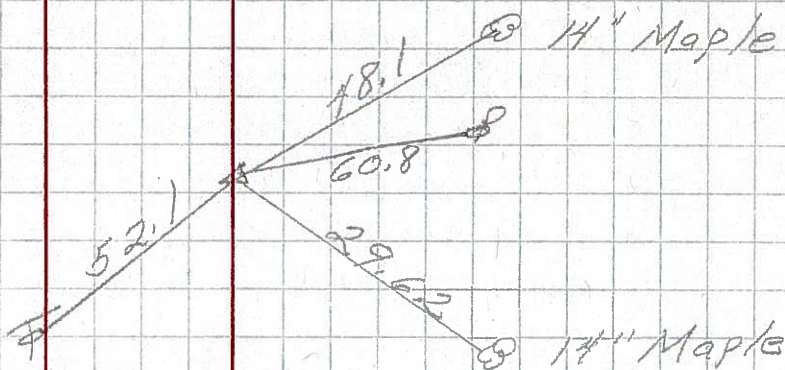
DESCRIPTION S.R. #19 - Attica JOB NO.

LEFT CENTER LINE RIGHT

76

31+98.4
Δ = 0°0'
R.R. spk. on E R/W

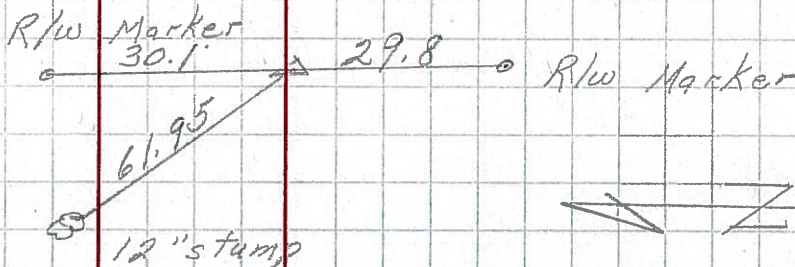
191



75

P.I. 26+73.9
Δ = 0°03' Rt.
R.R. spk. on E R/W

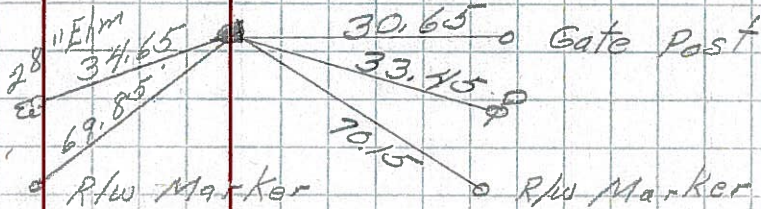
190



74-A

P.O.T.
12+62.6
Δ = 0°0'
R.R. spk. on E R/W

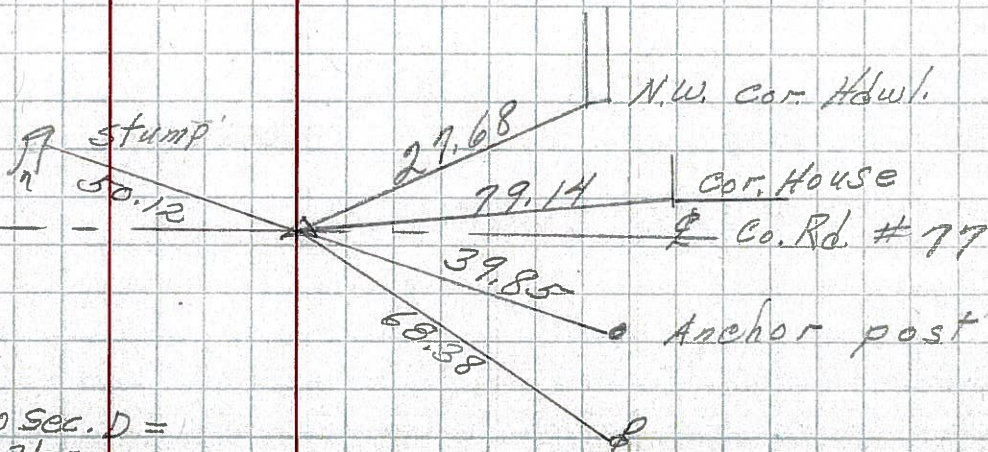
189



73

P.I. 106+08.21
R.R. spk. on E R/W

188



End Sec. G 0+00 Sec. D =
106+08.21 Sec. G

PERSONNEL TITLE PERSONNEL TITLE

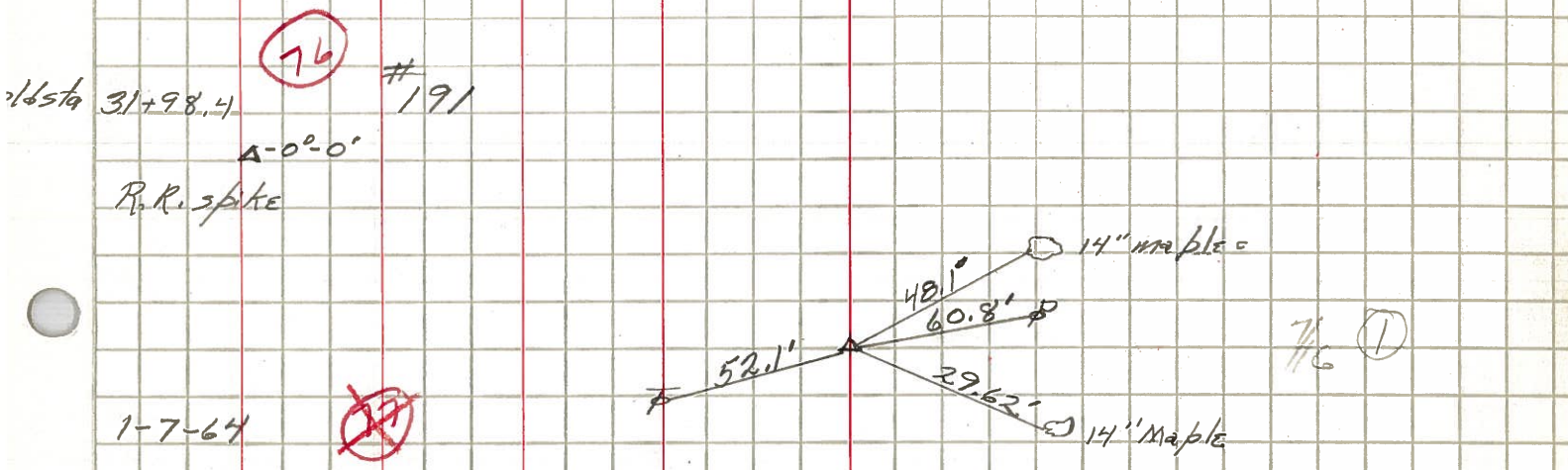
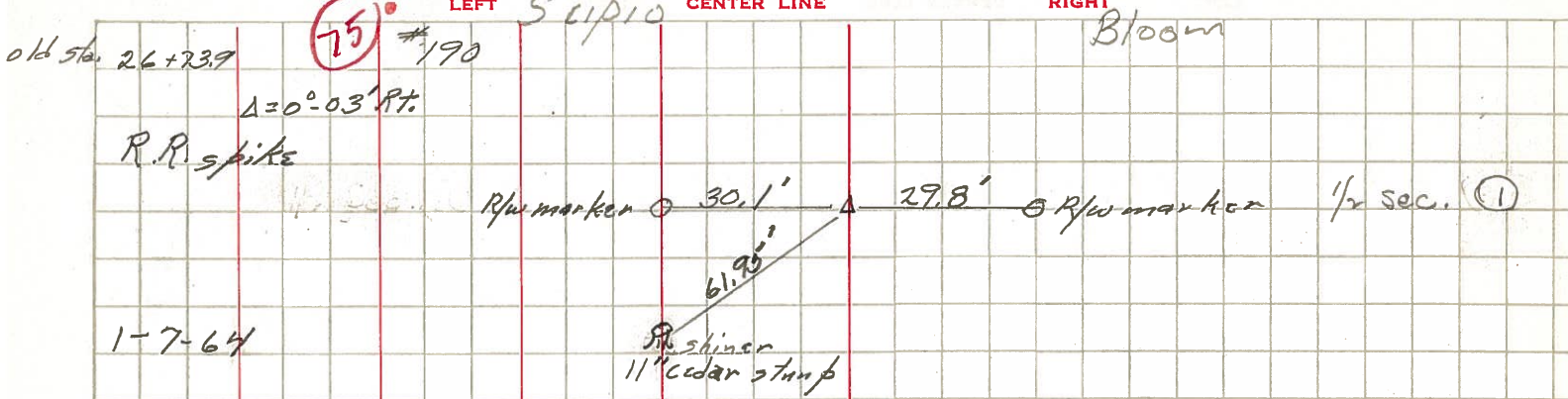
KraBill
Kavaliski
Brooks

COUNTY Seneca DATE

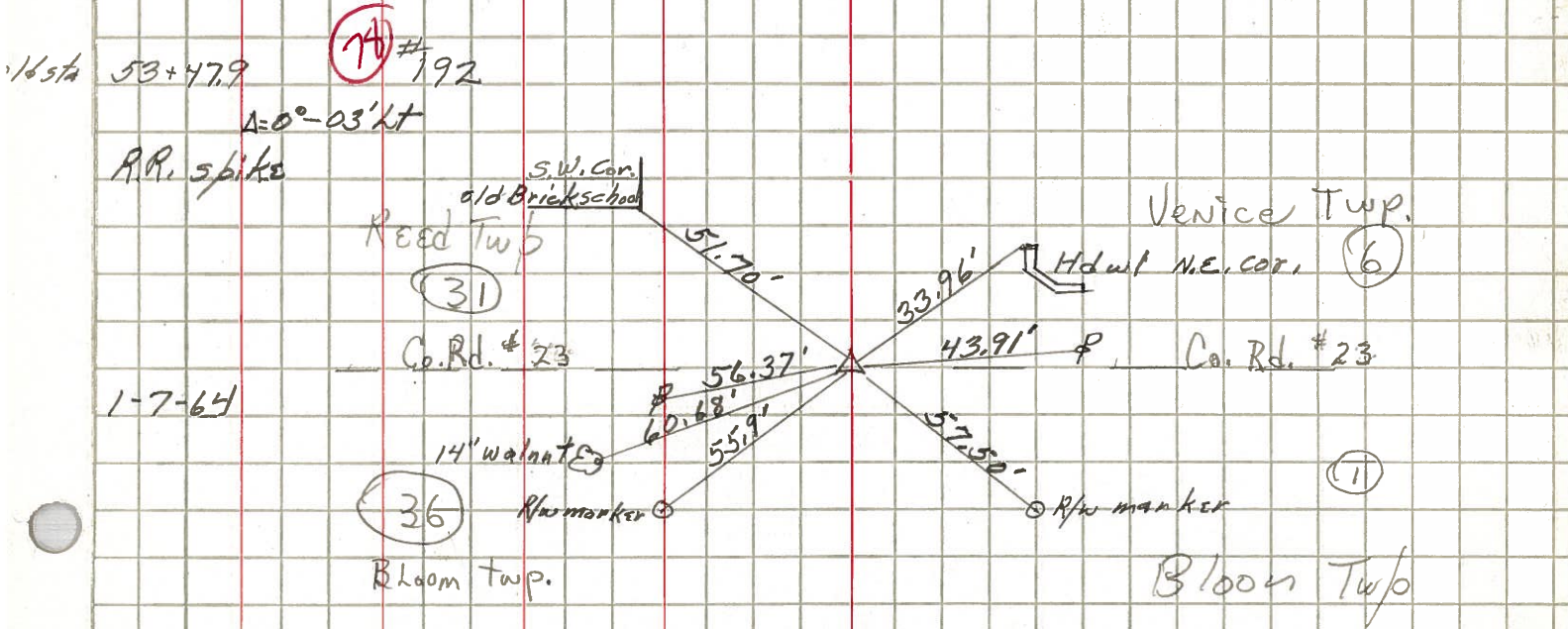
S. R. 224 WEATHER

SEC. TEMP.

DESCRIPTION LEFT CENTER LINE RIGHT JOB NO.



see sheet 10 for POT No 191A



PERSONNEL TITLE PERSONNEL TITLE

COUNTY Seneca

DATE checked 10-11-59

S. R. #224

WEATHER

SEC. G-D-F-E

TEMP

DESCRIPTION SH. 272

LEFT

CENTER LINE

RIGHT

JOB NO.

74A

Sta. 12+62.6

$\Delta = 0^\circ - 0'$

R.P. Spike on ϕ R/W

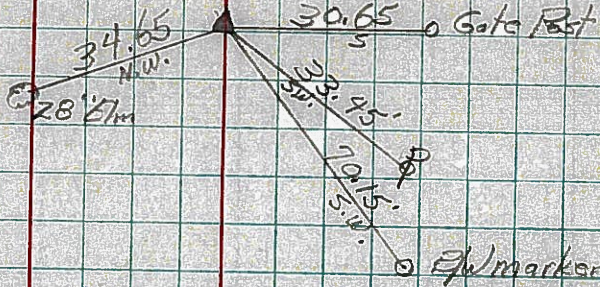
6-25-59

8-17-59

#

189

Reset



75

Sta. 26+73.9

$\Delta = 0^\circ - 03' \text{ Rt.}$

R.P. Spike on ϕ R/W

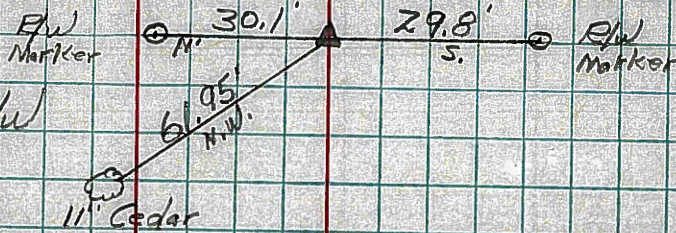
6-25-59

8-17-59

#

190

Reset



76

Sta. 31+98.4

$\Delta = 0^\circ - 0'$

R.P. Spike on ϕ R/W

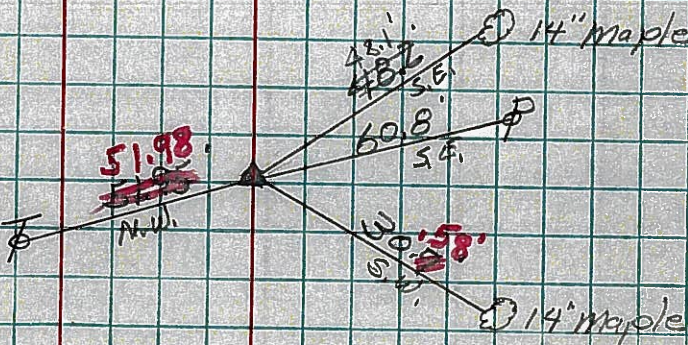
6-26-59

8-11-59

#

191

Reset



78

Sta. 53+47.9

$\Delta = 0^\circ - 03' \text{ Lt.}$

R.P. Spike Set over

Cor. Stone ϕ R/W

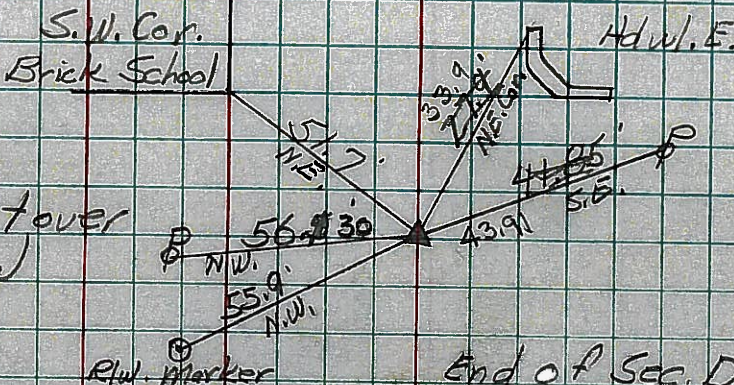
6-26-59

8-10-59

#

192

Reset



End of Sec. D. Start Sec. F
Sta. 53+47.9 Sec. D = Sta. 54+00
Sec. F