

O.D.O.T. DISTRICT 2 SURVEY OFFICE (USE ONLY)

PERSONNEL

REFERENCE NO. 78

SHEET 23 OF 37

NOTES RHOADES
 H.C. AUBLE
 R.C. ASTON
NIESE

DATE 11/8/23
 WEATHER CLOUDY
 TEMP. 43°

ROUTE US 224
 COUNTY SENECA
 TOWNSHIP SCIPIO
 SECTION 36

DWG BY RHOADES PID 101217

T 2 N R 16 E

TYPE MONUMENT MAG/WASHER

ON SURFACE - ~~BELOW~~ ON

OFFSET ☑ PAVEMENT ON LT : RT

10.8' TO RT EDGE PAVEMENT

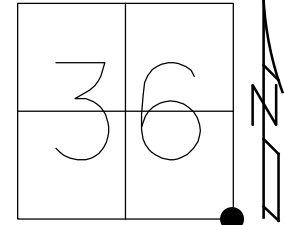
STATION: 1317+07.59

HORZ. DATUM: NAD83 2011

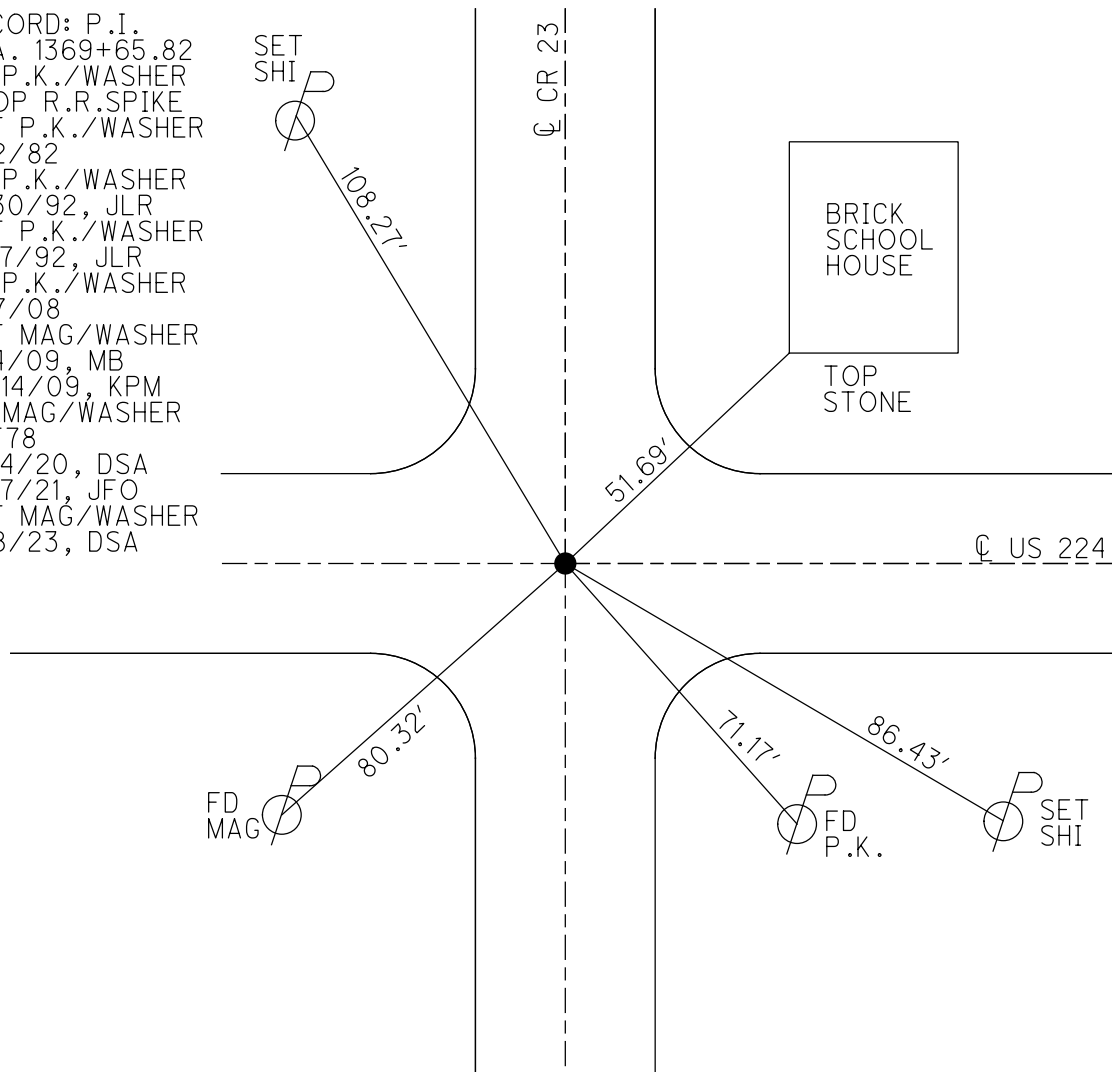
GEOID: NAVD88 2018

GRID: NORTHING: 515629.871

EASTING: 1842400.661



RECORD: P.I.
 STA. 1369+65.82
 FD P.K./WASHER
 ATOP R.R.SPIKE
 SET P.K./WASHER
 11/2/82
 FD P.K./WASHER
 6/30/92, JLR
 SET P.K./WASHER
 12/7/92, JLR
 FD P.K./WASHER
 1/17/08
 SET MAG/WASHER
 8/4/09, MB
 10/14/09, KPM
 FD MAG/WASHER
 REF78
 9/14/20, DSA
 3/17/21, JFO
 SET MAG/WASHER
 11/8/23, DSA



O.D.O.T. DISTRICT 2 SURVEY OFFICE (USE ONLY)

PERSONNEL

REFERENCE NO. 78

SHEET 21 OF 33

NOTES RHOADES

DATE 3/17/21

ROUTE US 224

H.C. O'DONNELL

WEATHER FAIR

COUNTY SENECA

R.C. _____

TEMP. 50°

TOWNSHIP SCIPIO

SECTION 36

DWG BY NIESE PID PAVE TRAIN

T 2 N R 16 E

TYPE MONUMENT MAG/WASHER

ON SURFACE - ~~BELOW~~ ON

OFFSET Q PAVEMENT ON LT : RT

10.8' TO RT EDGE PAVEMENT

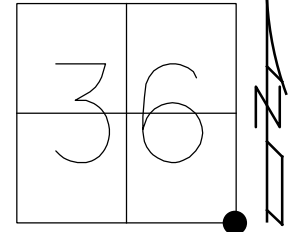
STATION: 1317+07.59

HORZ.DATUM: NAD83 2011

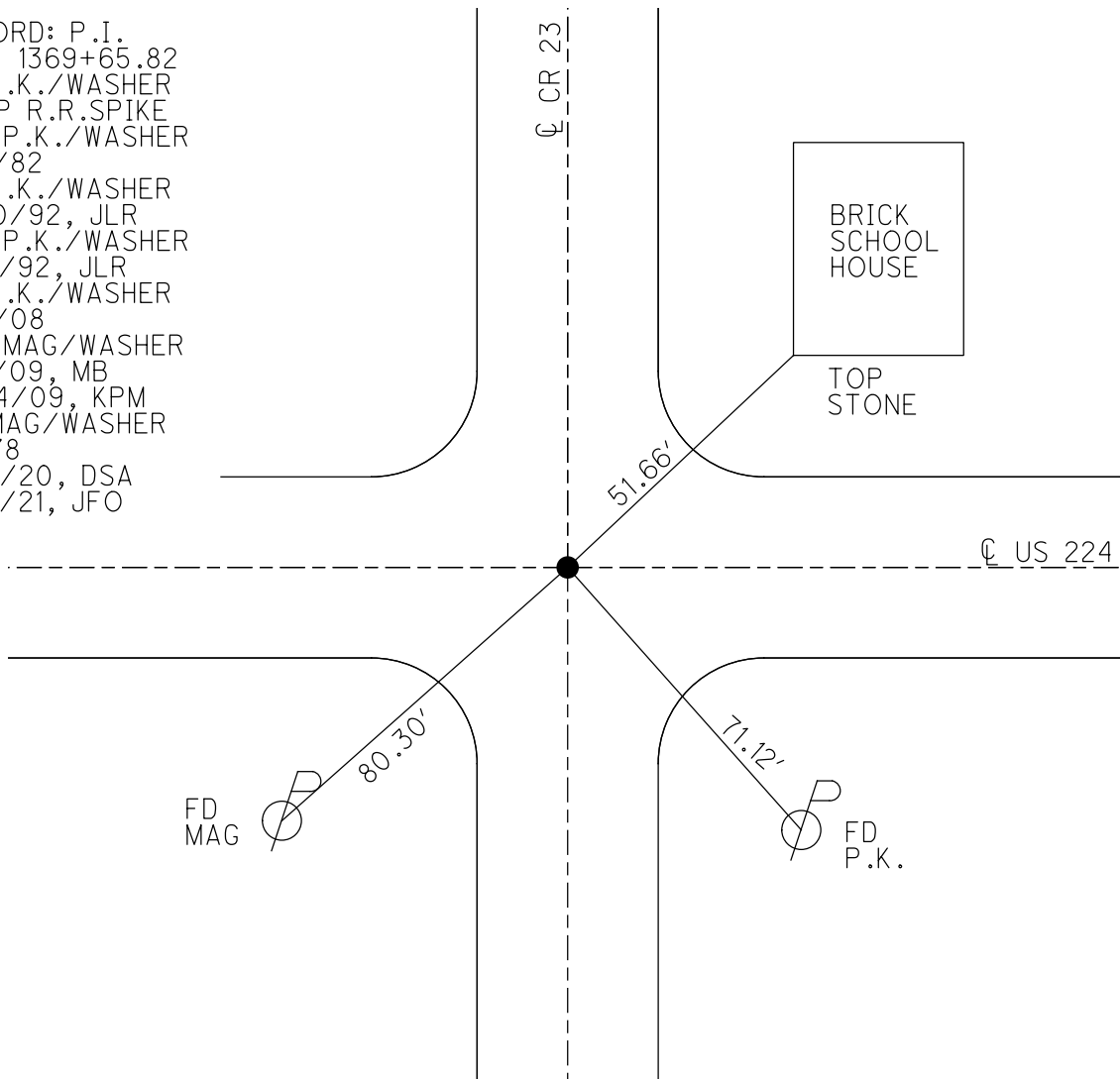
GEOID: NAVD88 2012A

GRID: NORTHING: 515629.899

EASTING: 1842400.623



RECORD: P.I.
 STA. 1369+65.82
 FD P.K./WASHER
 ATOP R.R.SPIKE
 SET P.K./WASHER
 11/2/82
 FD P.K./WASHER
 6/30/92, JLR
 SET P.K./WASHER
 12/7/92, JLR
 FD P.K./WASHER
 1/17/08
 SET MAG/WASHER
 8/4/09, MB
 10/14/09, KPM
 FD MAG/WASHER
 REF 78
 9/14/20, DSA
 3/17/21, JFO



O.D.O.T. DISTRICT 2 SURVEY OFFICE

PERSONNEL

REFERENCE NO. 78

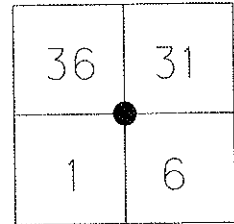
SHEET 20 OF 35

NOTES Moser
 H.C. Moser
 R.C. Pietkowski
 Goldberg

DATE 8-4-09
 WEATHER 4-8-09
 TEMP. +40°

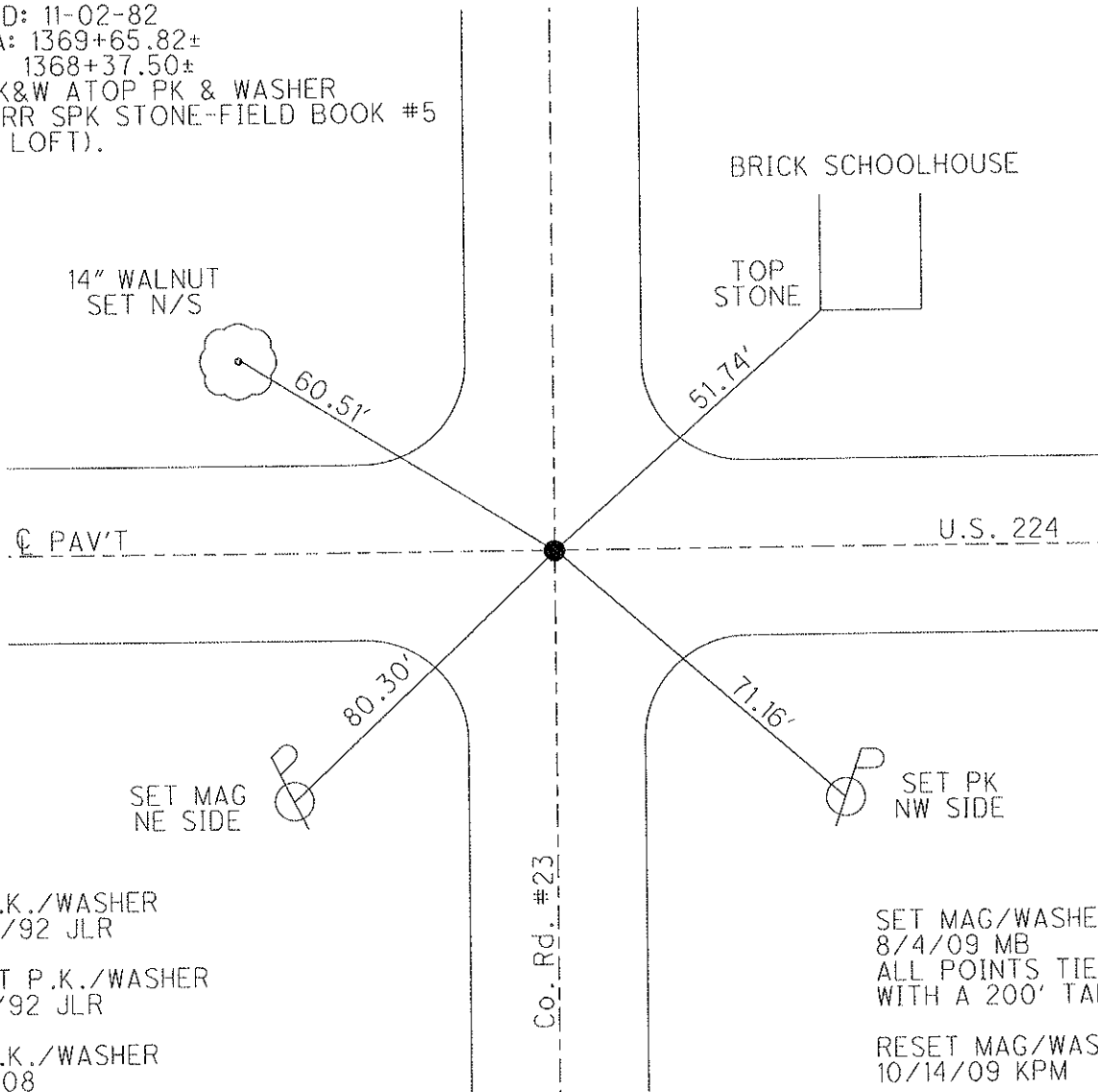
ROUTE U.S. 224
 COUNTY SENECA
 TOWNSHIP SCIPIO & REED
BLOOM & VENICE
 SECTION 1,6,31,36
 T 2 N R 16 E

TYPE MONUMENT P.K./WASHER
 ON SURFACE - ~~BELOW~~ ON
 LEFT - \odot PAV'T - RIGHT ON
 10.8' TO RT EDGE PAVEMENT
 S.L.M. 1317 + 07.59



Grid: Northing: 515629.899 Easting: 1842400.623

RECORD: 11-02-82
 PI STA: 1369+65.82±
 1368+37.50±
 SET PK&W ATOP PK & WASHER
 ATOP RR SPK STONE--FIELD BOOK #5
 (FROM LOFT).



FD P.K./WASHER
 6/30/92 JLR

RESET P.K./WASHER
 12/7/92 JLR

FD P.K./WASHER
 1/17/08

SET MAG/WASHER
 8/4/09 MB
 ALL POINTS TIED
 WITH A 200' TAPE.

RESET MAG/WASHER
 10/14/09 KPM

O.D.O.T. DISTRICT 2 SURVEY OFFICE

PERSONNEL

REFERENCE NO. 78

SHEET 17 OF 32

NOTES Cheney
 H.C. RIPPLE
 R.C. BARBOUR
Geyman

DATE 6-30-92
 WEATHER Cloudy
 TEMP. 55°

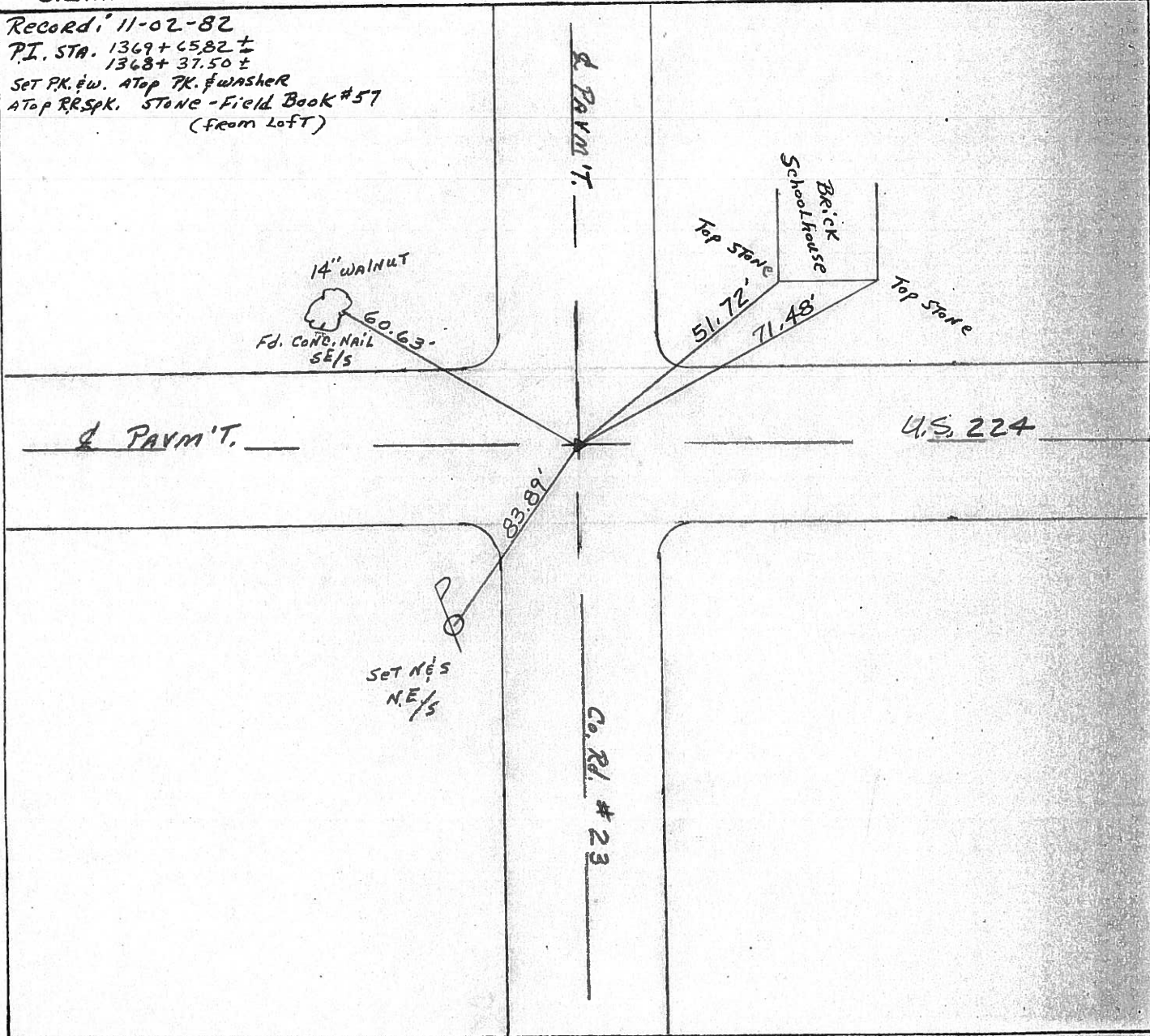
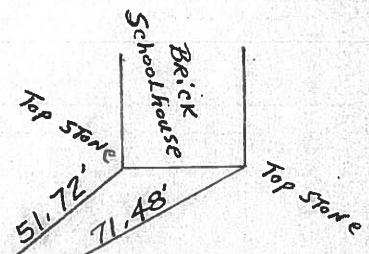
ROUTE U.S. 224
 COUNTY SENECA
 TOWNSHIP Scipio & Reed
Bloom & Venice
 SECTION 36 & 31 - 1 & 6
T² N R 17 E

TYPE MONUMENT 6-30-92
Fd. P.K. & Washer Reset P.K. & Washer
12-07-92
J.L.R.
 ON SURFACE - ~~BELOW~~ yes
 LEFT - & PAV'T. - ~~RIGHT~~ yes
 10' TO RT. EDGE PAVEMENT
 S.L.M. 1317+49

36	31
1	6



Record: 11-02-82
 P.I. STA. 1369+65.82 ±
1368+37.50 ±
 SET P.K. & W. ATOP P.K. & WASHER
 ATOP RR SPK. STONE - Field Book #57
 (from Left)



County Seneca S.R. 224

Date 11/02/82 Drawn 11/04/82

Township Scipio, Reed-Bloom, Venice

Weather sunny

Section 36^E 31 - 1^E 6

Temp. 62°

T²LN, R¹⁷IZE

Personnel Cronin

Ripple

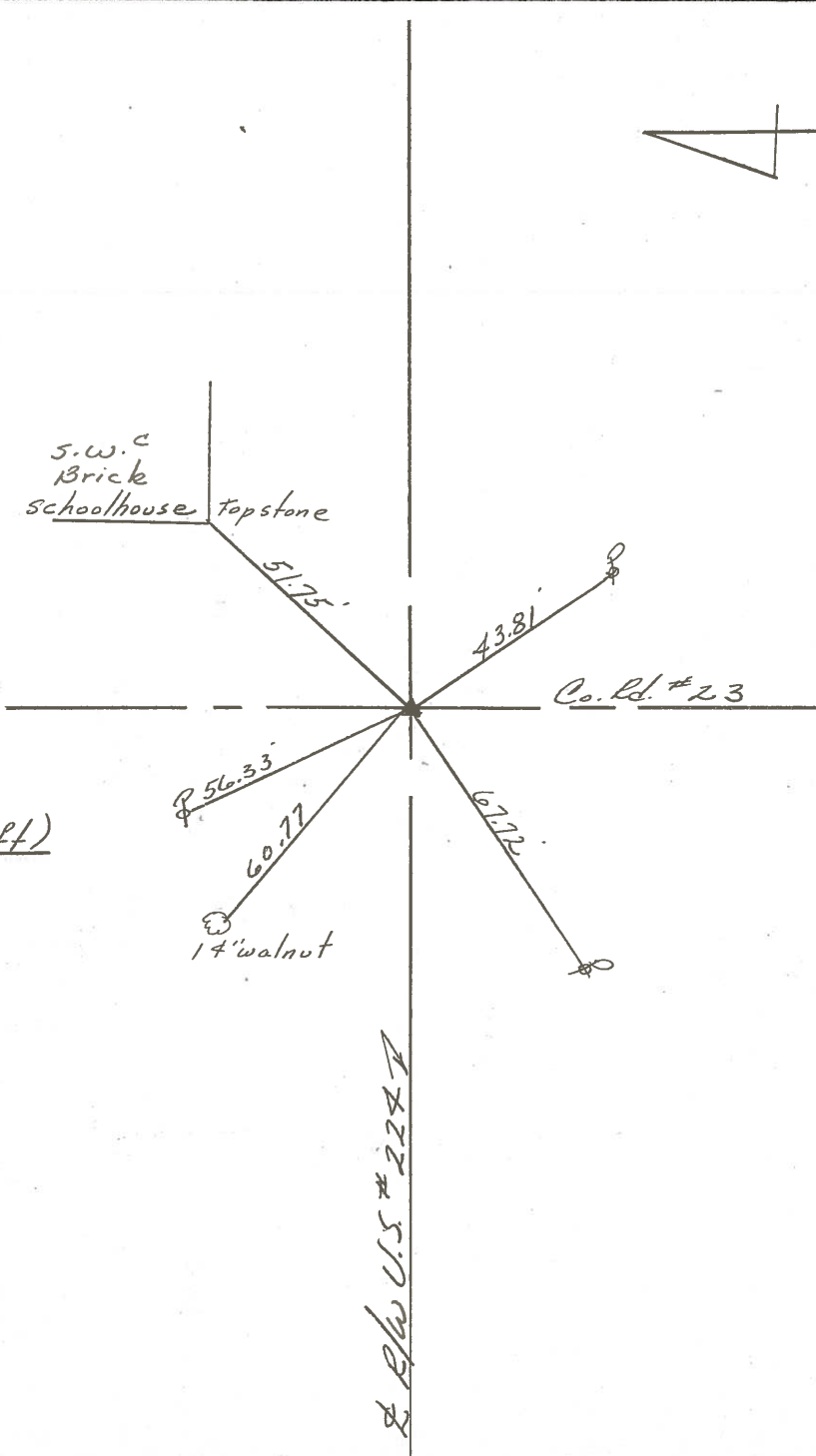
Geyman

Mosser

Barbour

18

36	31
1	6



P.I.
 1369+65.82 I
 1368+37.50 ±

set P.K. & washer at top
 P.K. & washer at top R.L. spike
 Stone-Field Book #57 (from 10ft)

R/R/W U.S. #224 I

PERSONNEL TITLE PERSONNEL TITLE

COUNTY Seneca DATE 4-2-68

Schneider

Mosser

Barbour

Potts

S. R. U.S. # 224 WEATHER Fair

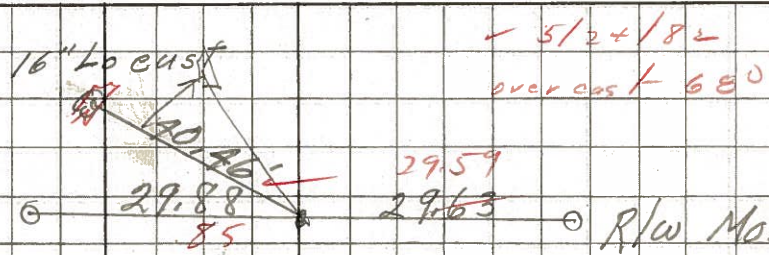
SEC. S.R. #100 to Attica TEMP. 45°

DESCRIPTION Ties for Control Points LEFT CENTER LINE RIGHT JOB NO.

82

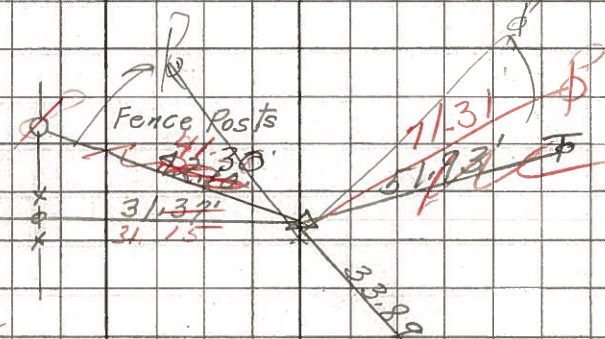
11/02/82
sunny 62°
1405 + 85 ±

P.O.T.
1403+
R.R. spk.
Reset P.K. Nail



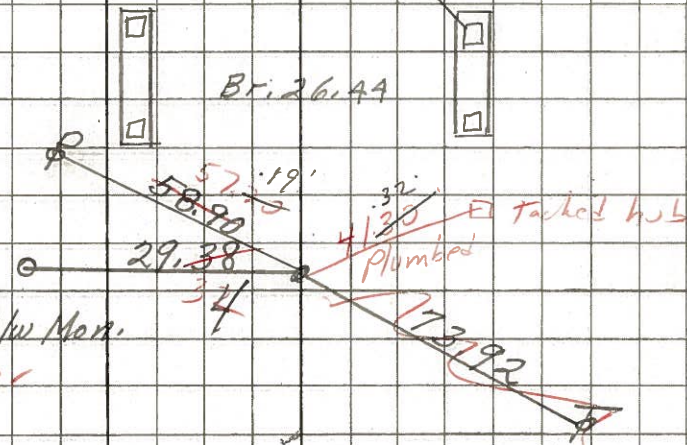
81

8627
set P.K. washer
P.I.
1394+
R.R. spk.
Reset P.K. Nail & washer
1' R.L. & P.V. ±



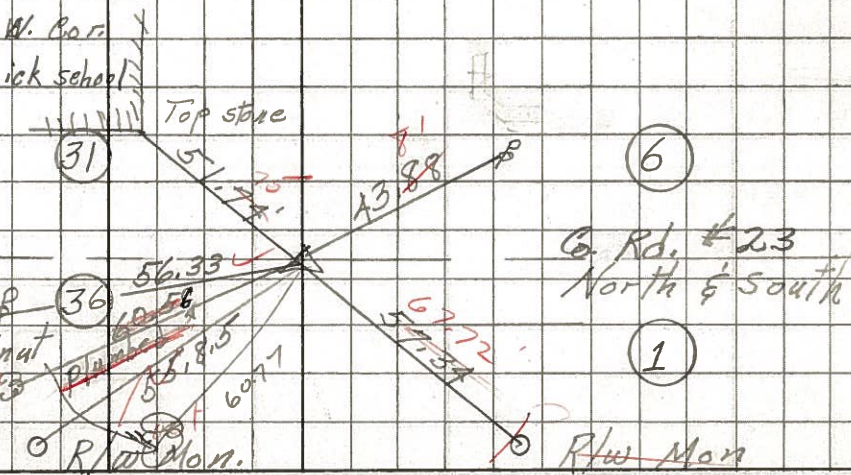
80

Did not reset
P.O.T.
1384+ 1386+28
R.R. spk.
Reset P.K. Nail & washer
1' L ±
8625



78

set P.K. & washer
P.I.
1368+ 8624
R.R. spk.
Reset P.K. Nail & washer
14" Walnut
607 ±



PERSONNEL TITLE PERSONNEL TITLE

COUNTY Seneca DATE 1-12-68

S. R. U.S. # 224 WEATHER

SEC. TEMP.

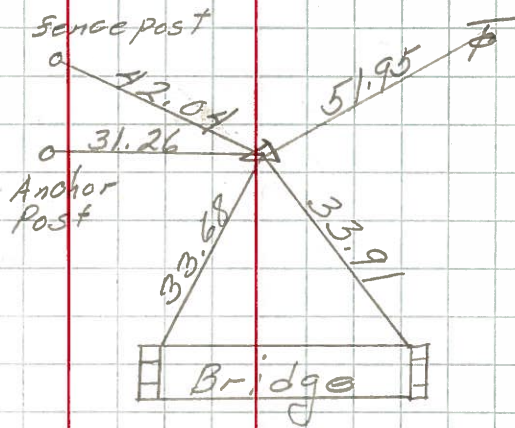
DESCRIPTION S.R. # 19 - A H'ica JOB NO.

LEFT CENTER LINE RIGHT

81

P.I. 1396 + 58.72
R.R. spl. on & R/w

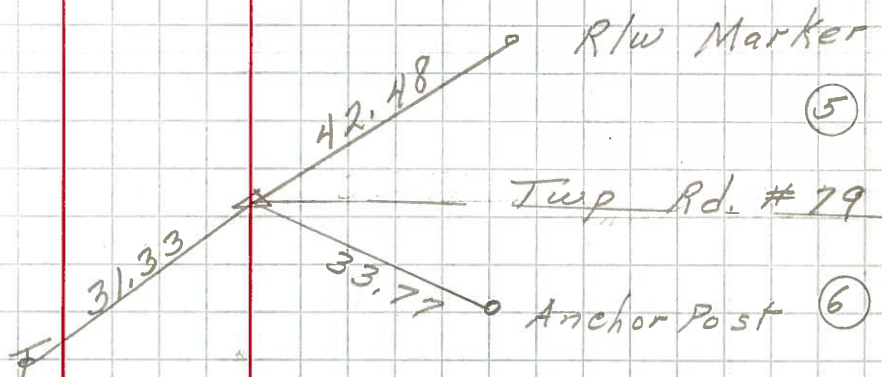
192A



83

105 + 41.7
 $\Delta = 0^{\circ} 04' \text{ Rt.}$
R.R. spl. on & R/w

193

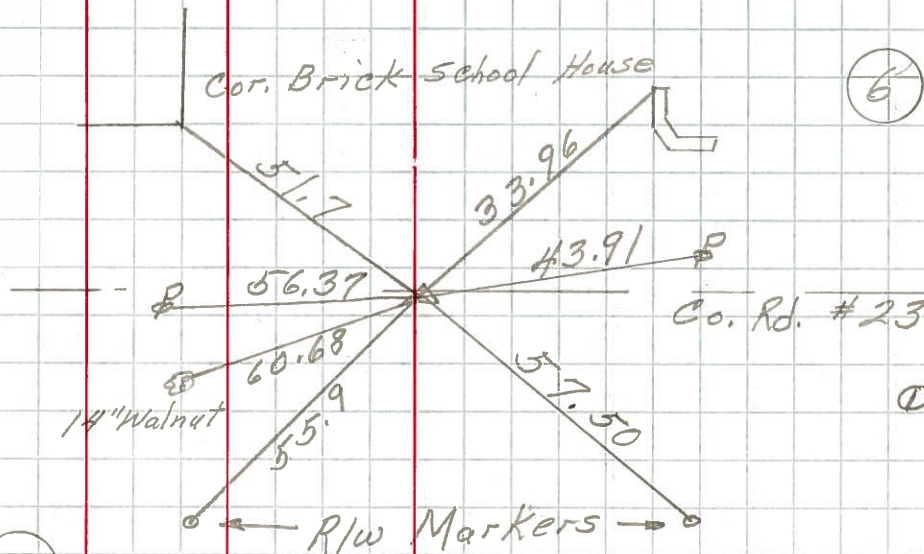


78

53 + 47.9
 $\Delta = 0^{\circ} 03' \text{ Lt.}$
R.R. spl. set
over cor. stone
& R/w

192

36



End Sec. D Start Sec. F.
53 + 47.9 sec. D = 54 + 00
Sec. F

PERSONNEL TITLE PERSONNEL TITLE

COUNTY Seneca DATE

KraBill

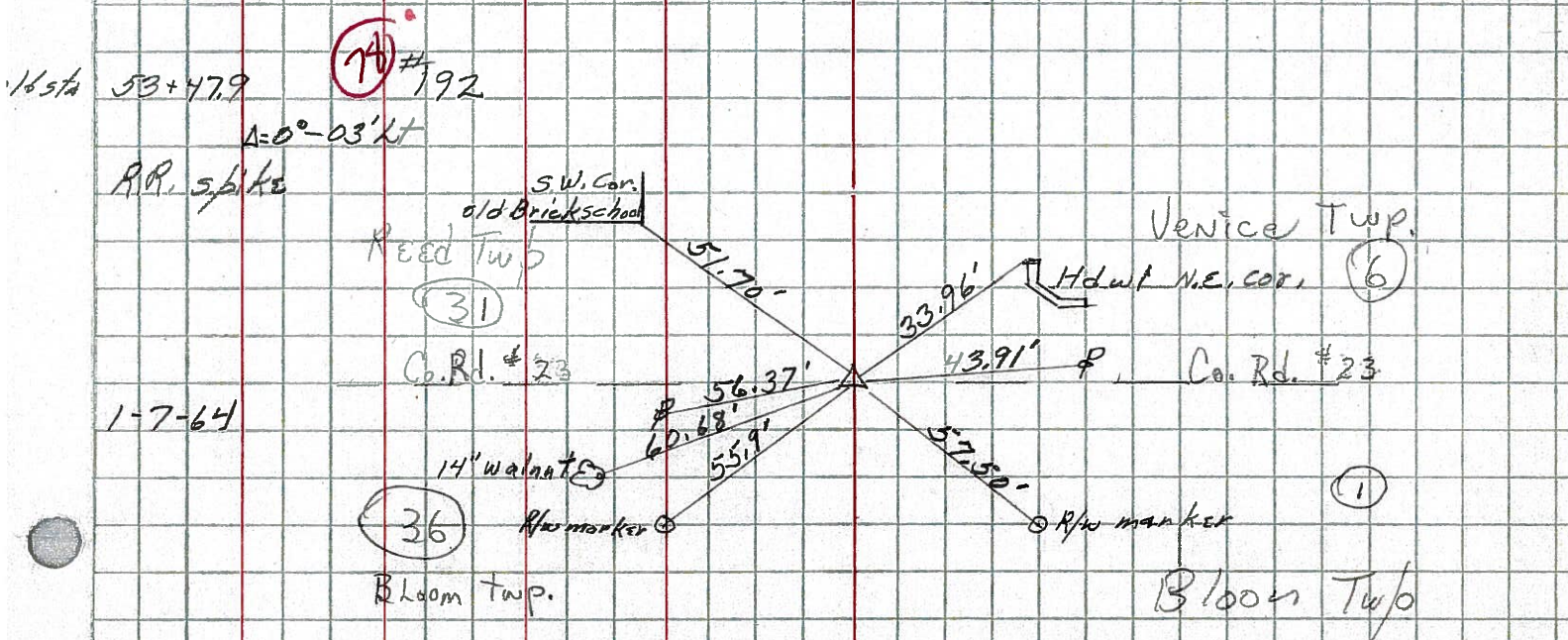
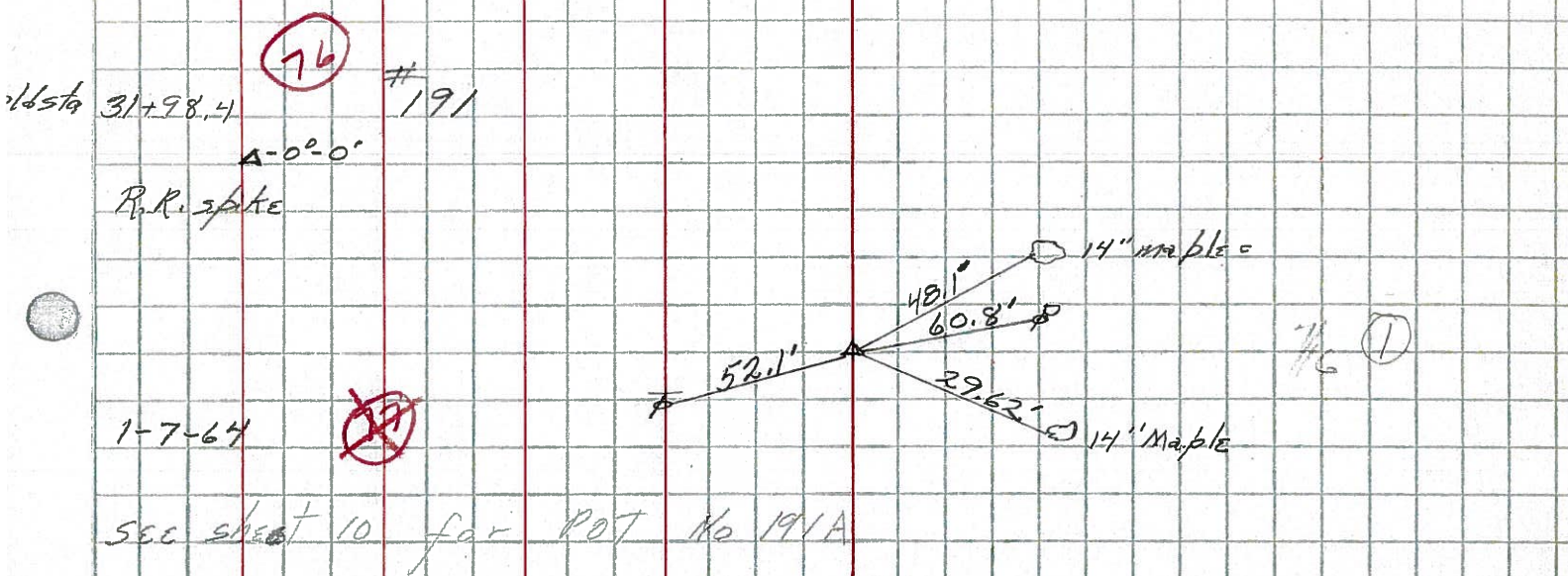
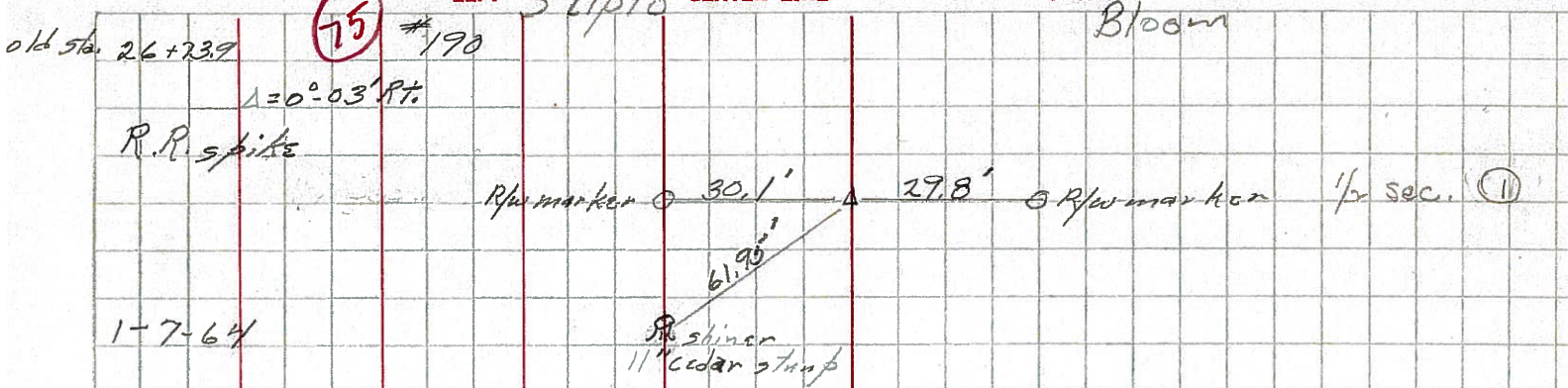
Kavaleski

Brooks

S. R. 224 WEATHER

SEC. TEMP.

DESCRIPTION LEFT CENTER LINE RIGHT JOB NO.



PERSONNEL TITLE PERSONNEL TITLE

COUNTY Seneca

DATE checked 10-11-59

S. R. #224

WEATHER

SEC. G-D-F-E

TEMP.

DESCRIPTION SH. 272

LEFT

CENTER LINE

RIGHT

JOB NO.

74A

Sta. 12+62.6

$\Delta = 0^{\circ} - 0'$

R.R. Spike on ϕ R/W

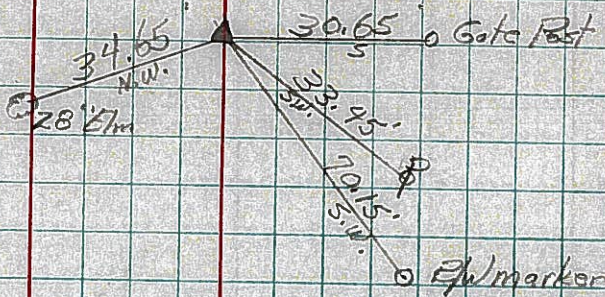
6-25-59

#

8-17-59

189

Reset



75

Sta. 26+73.9

$\Delta = 0^{\circ} - 03' \text{ Rt.}$

R.R. Spike on ϕ R/W

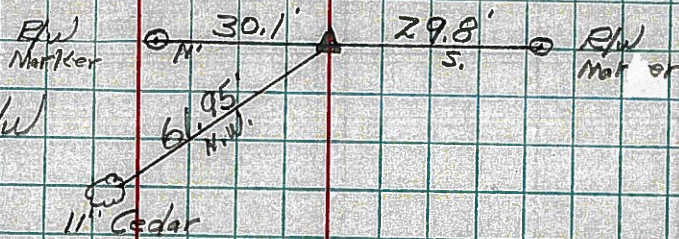
6-25-59

#

8-17-59

190

Reset



76

Sta. 31+98.4

$\Delta = 0^{\circ} - 0'$

R.R. Spike on ϕ R/W

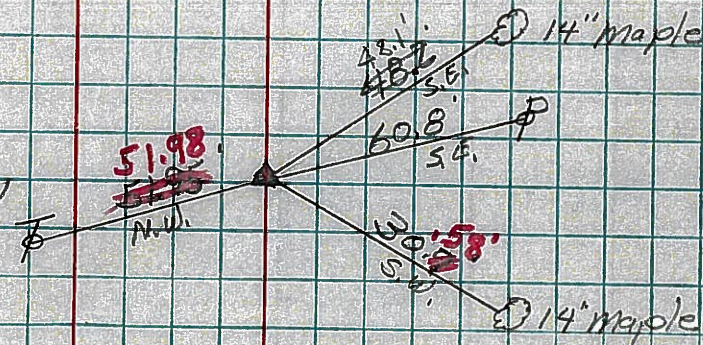
6-26-59

#

8-17-59

191

Reset



78

Sta. 53+47.9'

$\Delta = 0^{\circ} - 03' \text{ Lt.}$

R.R. Spike Set over

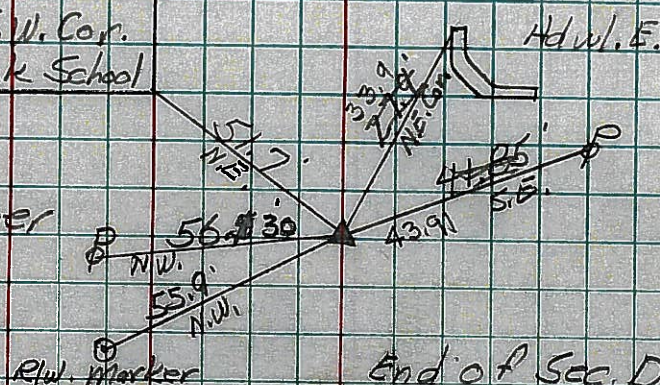
Cor. Stone ϕ R/W

6-26-59

8-18-59

#

192



End of Sec. D. Start Sec. F
Sta. 53+47.9 Sec. D = Sta. 54+00
Sec. F