

O.D.O.T. DISTRICT 2 SURVEY OFFICE (USE ONLY)

PERSONNEL

REFERENCE NO. 82

SHEET 27 OF 37

NOTES RHOADES

DATE 11/8/23

ROUTE US 224

H.C. AUBLE

WEATHER CLOUDY

COUNTY SENECA

R.C. ASTON

TEMP. 51°

TOWNSHIP REED

NIESE

SECTION 31

DWG BY RHOADES

PID 101217

T 2 N R 17 E

TYPE MONUMENT MAG/WASHER

ON SURFACE - ~~BELOW~~ ON

OFFSET \varnothing PAVEMENT 1' LT : ~~RT~~

10.2' TO LT EDGE PAVEMENT

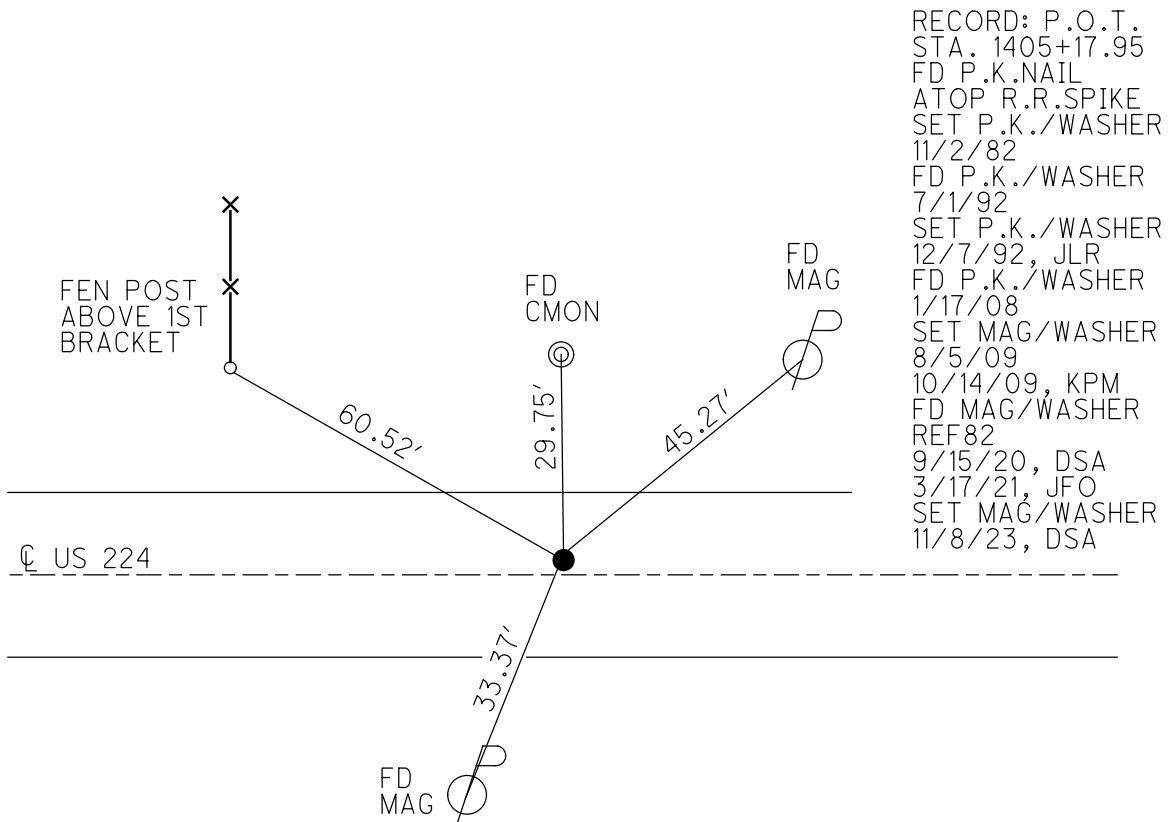
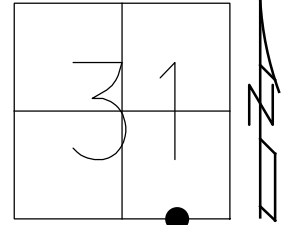
STATION: 1352+85.89

HORZ.DATUM: NAD83 2011

GEOID: NAVD88 2018

GRID: NORTHING: 515585.843

EASTING: 1845898.595

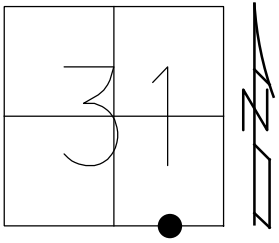


RECORD: P.O.T.
 STA. 1405+17.95
 FD P.K.NAIL
 ATOP R.R.SPIKE
 SET P.K./WASHER
 11/2/82
 FD P.K./WASHER
 7/1/92
 SET P.K./WASHER
 12/7/92, JLR
 FD P.K./WASHER
 1/17/08
 SET MAG/WASHER
 8/5/09
 10/14/09, KPM
 FD MAG/WASHER
 REF82
 9/15/20, DSA
 3/17/21, JFO
 SET MAG/WASHER
 11/8/23, DSA

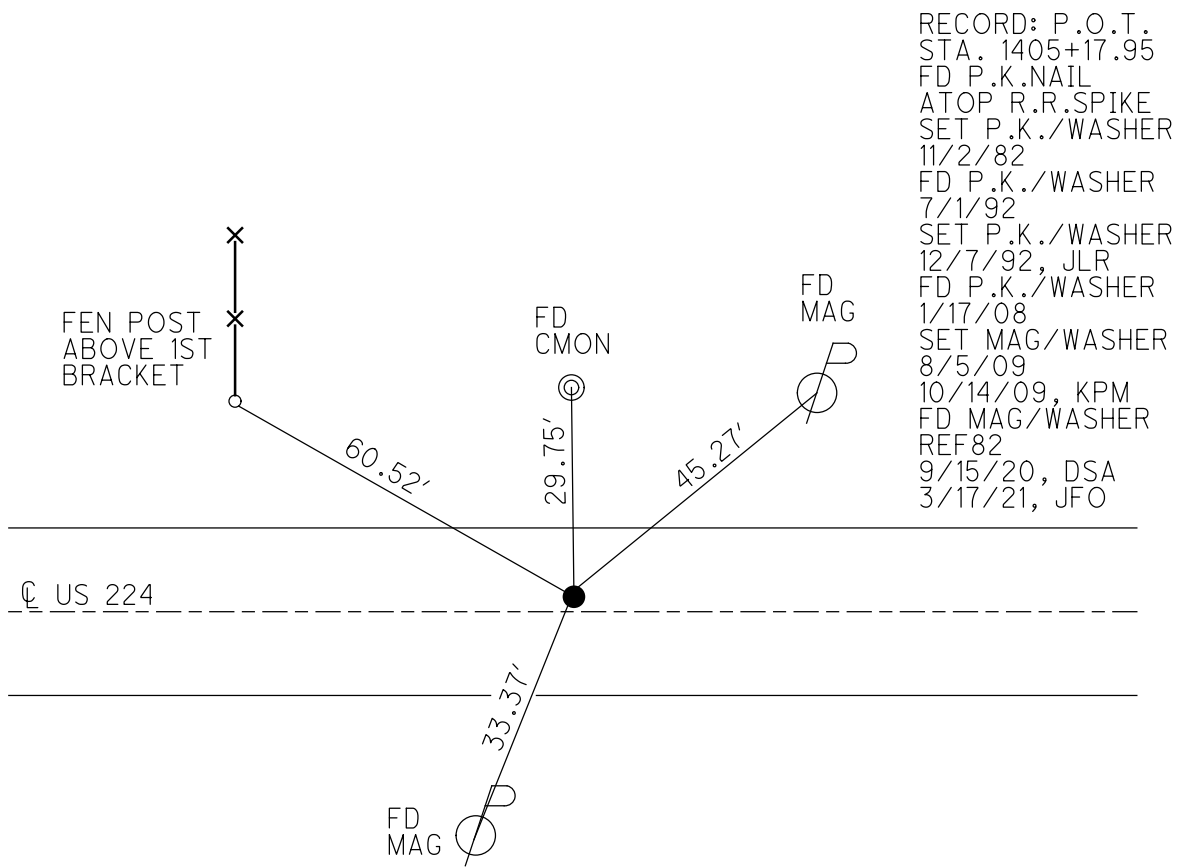
O.D.O.T. DISTRICT 2 SURVEY OFFICE (USE ONLY)

PERSONNEL _____ REFERENCE NO. 82 SHEET 25 OF 33
 NOTES RHOADES DATE 3/17/21 ROUTE US 224
 H.C. O'DONNELL WEATHER FAIR COUNTY SENECA
 R.C. _____ TEMP. 50° TOWNSHIP REED
 DWG BY NIESE PID PAVE TRAIN SECTION 31
 T 2 N R 17 E

TYPE MONUMENT MAG/WASHER
 ON SURFACE - ~~BELOW~~ ON
 OFFSET CL PAVEMENT 1' LT : ~~RT~~
10.2' TO LT EDGE PAVEMENT
 STATION: 1352+85.89



HORIZ.DATUM: NAD83 2011 GEOID: NAVD88 2012A
 GRID: NORTHING: 515570.867 EASTING: 1845898.515



O.D.O.T. DISTRICT 2 SURVEY OFFICE

PERSONNEL

REFERENCE NO. 82

SHEET 24 OF 35

NOTES Moser

DATE 8-5-09

ROUTE U.S. 224

H.C. Moser

WEATHER Fair

COUNTY SENECA

R.C. Pietkowski

TEMP. +40°

TOWNSHIP REED

Goldberg

SECTION 31

T 2 N R 17 E

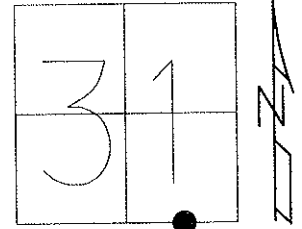
TYPE MONUMENT P.K./WASHER

ON SURFACE - ~~BELOW~~ ON

LEFT - Q PAV'T - ~~RIGHT~~ 1'

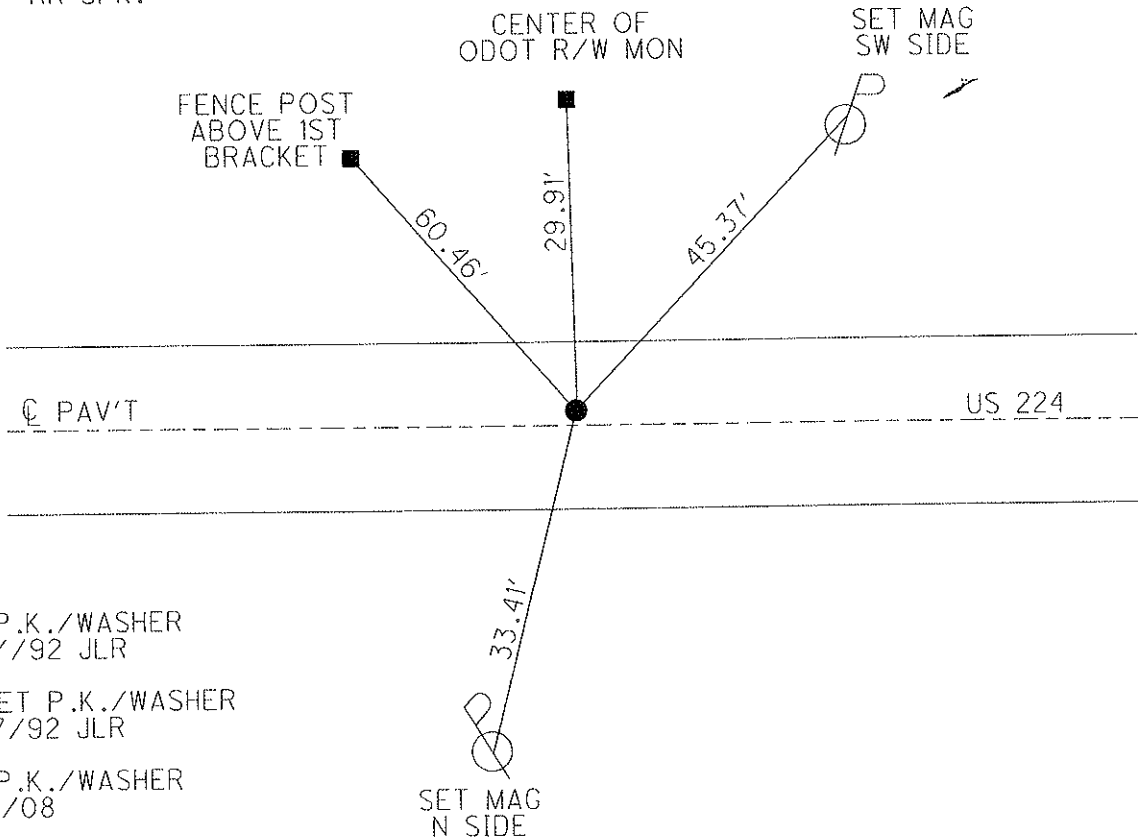
10.2' TO LT. EDGE PAVEMENT

S.L.M. 1352+85.89



Grid: Northing: 515570.867 Easting: 1845898.515

RECORD: 11-02-82
 POT STA 1405+17.95
 SET PK&WASHER ATOP PK
 ATOP RR SPK.



FD P.K./WASHER
 7/1/92 JLR

RESET P.K./WASHER
 12/7/92 JLR

FD P.K./WASHER
 1/17/08

SET MAG/WASHER
 8/5/09 KPM
 ALL POINTS TIED
 WITH A 200' TAPE.

RESET MAG/WASHER
 10/14/09 KPM

O.D.O.T. DISTRICT 2 SURVEY OFFICE

PERSONNEL

REFERENCE NO. 82

SHEET 21 OF 32

NOTES Cheney

H.C. RIPPLE

R.C. BARBOUR

Geyman

DATE 7-07-92

WEATHER Cloudy

TEMP. 65°

ROUTE U.S. 224

COUNTY Seneca

TOWNSHIP Reed

SECTION 31

T 2 N R 17 E

7-01-92

TYPE MONUMENT Fd. P.K. & Washer Reset P.K. & Washer 12-07-92

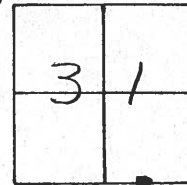
ON SURFACE - BELOW YES

LEFT - ☉ PAV'T. - RIGHT 1'

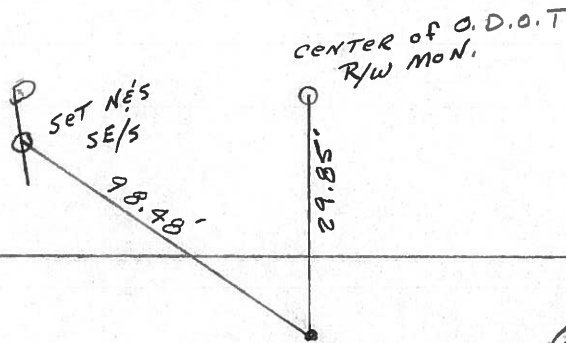
9' TO LT. EDGE PAVEMENT

S.L.M. 1352+49

Reset P.K. & Washer 12-07-92
J.C.R



Record: 11-02-82
P.O.T. STA. 1405+17.95±
Set P.K. & Washer ATOP P.K.
ATOP RR. SPK.



County Seneca S.R. 224

Township Reed

Section 31

T2N, R17E

Personnel Cronin

Ripple

Geyman

Mosser

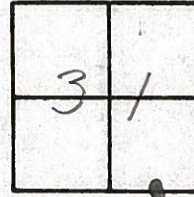
Barbour

Date 11/02/82 Drawn 11/04/82

Weather sunny

Temp. 62°

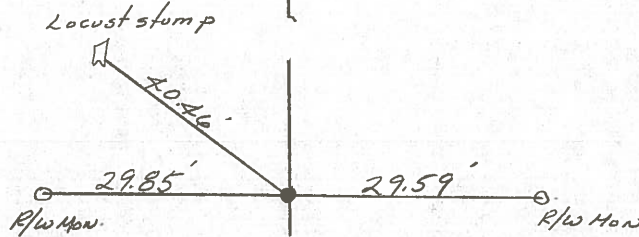
82



P.O.T

1405 + 17.95 ±

set P.K. & washer atop P.K.
atop R.R. spike



R/W U.S. # 2247

PERSONNEL TITLE PERSONNEL TITLE

COUNTY Seneca

DATE 4-2-68

Schneider

Mosser

Barbour

Potts

S. R. U.S. # 224

WEATHER Fair

SEC. S.R. #100 to Attica

TEMP. 45°

DESCRIPTION

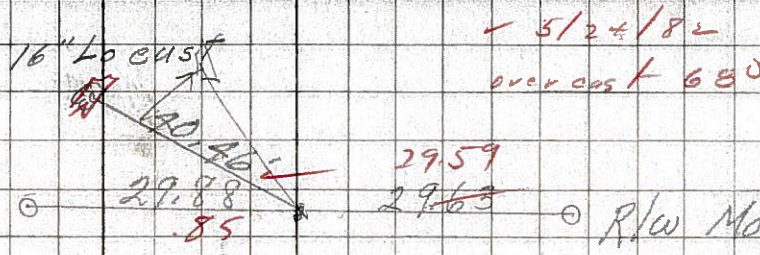
Ties for Control Points

JOB NO.

LEFT CENTER LINE RIGHT

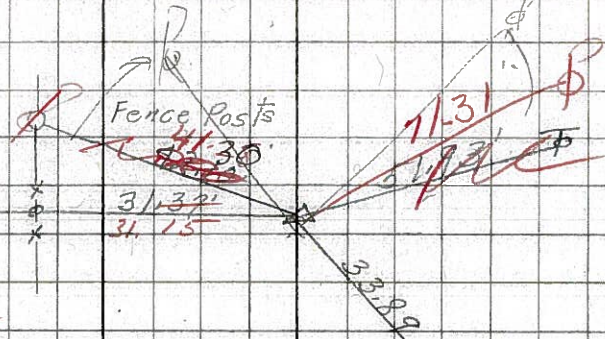
82

7/102/82
sunny 62°
1405 + 85 ±
P.O.T.
1403 ±
R.R. spk.
Reset P.K. Nail



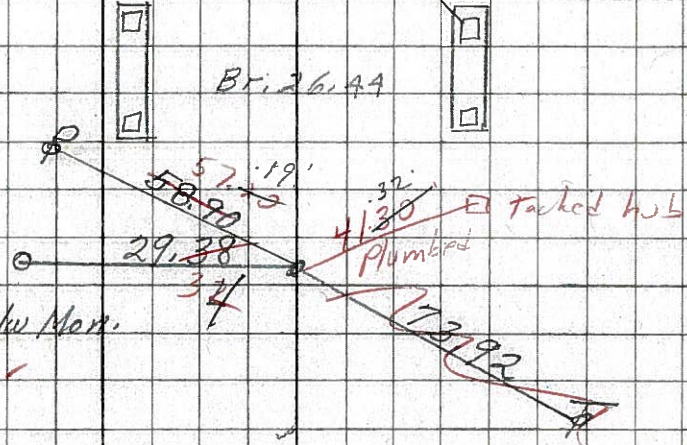
81

8627
set P.K. & washer
P.I.
1394 ±
R.R. spk.
Reset P.K. Nail & washer
1' R.L. & P.V.T.



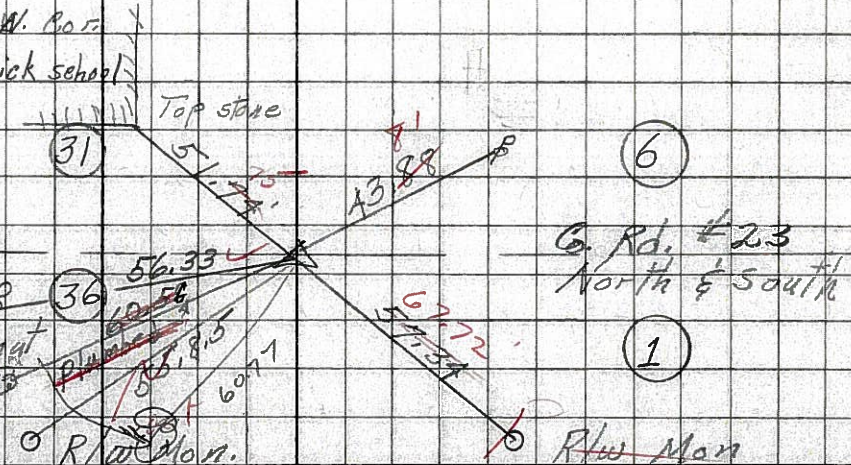
80

Did not reset
P.O.T.
1384 + 1386 ± 28
R.R. spk.
Reset P.K. Nail & washer
1' L & ±



78

set P.K. & washer
P.I.
1368 ±
R.R. spk.
Reset P.K. Nail
& washer
14" Walnut
60.7 ±



PERSONNEL TITLE PERSONNEL TITLE COUNTY Seneca DATE _____
 Kravill _____
 Kowaleski _____ S. R. 224 WEATHER _____
 Brooks _____ SEC. _____ TEMP. _____

DESCRIPTION _____ LEFT Reed CENTER LINE _____ RIGHT Venice JOB NO. _____

