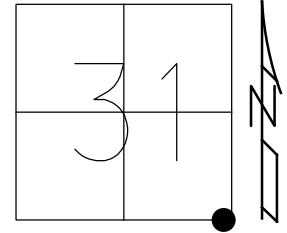


O.D.O.T. DISTRICT 2 SURVEY OFFICE (USE ONLY)

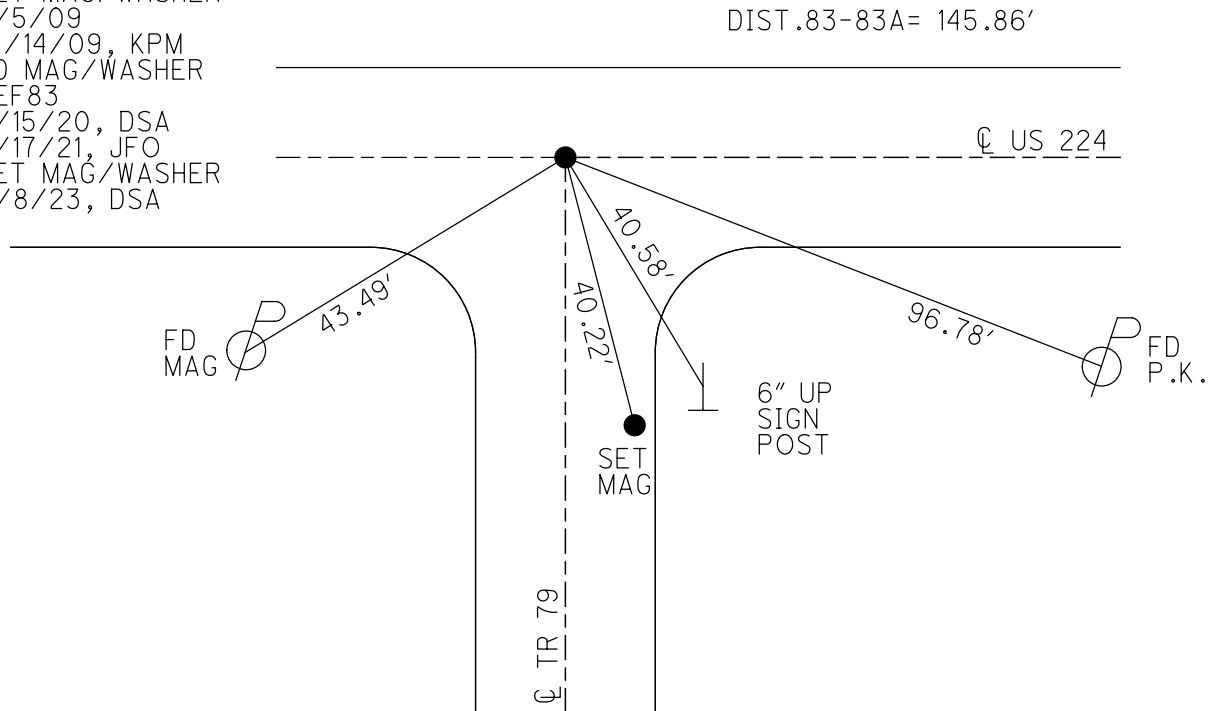
PERSONNEL _____ REFERENCE NO. 83 SHEET 28 OF 37
 NOTES RHOADES DATE 11/8/23 ROUTE US 224
 H.C. AUBLE WEATHER CLOUDY COUNTY SENECA
 R.C. ASTON TEMP. 51° TOWNSHIP REED
 NIESE SECTION 31
 DWG BY RHOADES PID 101217 T 2 N R 17 E

TYPE MONUMENT MAG/WASHER
 ON SURFACE - ~~BELOW~~ ON
 OFFSET \varnothing PAVEMENT ON LT : RT
10.3' TO LT EDGE PAVEMENT
 STATION: 1369+31.99



HORIZ.DATUM: NAD83 2011 GEOID: NAVD88 2018
 GRID: NORTHING: 515570.738 EASTING: 1847544.608

RECORD: P.I.
 STA.1421+59.62
 FD BOAT SPIKE/WASHER
 ATOP R.R.SPIKE
 ATOP IRON STAKE
 SET P.K./WASHER
 11/2/82
 FD P.K./WASHER
 7/1/92
 SET P.K./WASHER
 12/7/92, JLR
 FD P.K./WASHER
 1/17/08
 SET MAG/WASHER
 8/5/09
 10/14/09, KPM
 FD MAG/WASHER
 REF83
 9/15/20, DSA
 3/17/21, JFO
 SET MAG/WASHER
 11/8/23, DSA



O.D.O.T. DISTRICT 2 SURVEY OFFICE (USE ONLY)

PERSONNEL

REFERENCE NO. 83

SHEET 26 OF 33

NOTES RHOADES DATE 3/17/21
 H.C. O'DONNELL WEATHER FAIR
 R.C. _____ TEMP. 50°

ROUTE US 224
 COUNTY SENECA
 TOWNSHIP REED
 SECTION 31
 T 2 N R 17 E

DWG BY NIESE PID PAVE TRAIN

TYPE MONUMENT MAG/WASHER

ON SURFACE - ~~BELOW~~ ON

OFFSET \odot PAVEMENT ON LT : RT

10.3' TO LT EDGE PAVEMENT

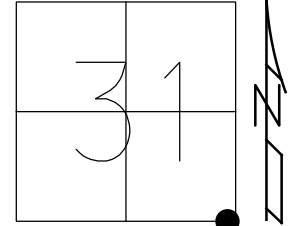
STATION: 1369+31.99

HORIZ.DATUM: NAD83 2011

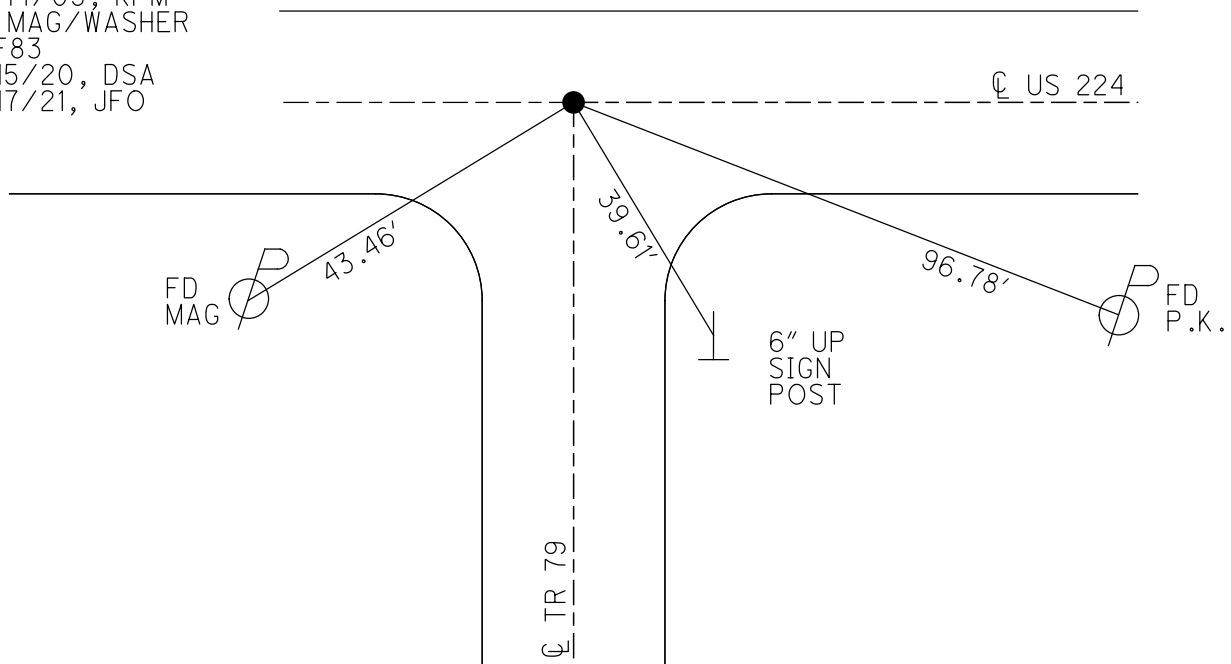
GEOID: NAVD88 2012A

GRID: NORTHING: 515570.773

EASTING: 1847544.536



RECORD: P.I.
 STA.1421+59.62
 FD BOAT SPIKE/WASHER
 ATOP R.R.SPIKE
 ATOP IRON STAKE
 SET P.K./WASHER
 11/2/82
 FD P.K./WASHER
 7/1/92
 SET P.K./WASHER
 12/7/92, JLR
 FD P.K./WASHER
 1/17/08
 SET MAG/WASHER
 8/5/09
 10/14/09, KPM
 FD MAG/WASHER
 REF83
 9/15/20, DSA
 3/17/21, JFO



O.D.O.T. DISTRICT 2 SURVEY OFFICE

PERSONNEL

REFERENCE NO. 83

SHEET 25 OF 35

NOTES Moser

DATE 8-5-09

ROUTE U.S. 224

H.C. Moser

WEATHER Fair

COUNTY SENECA

R.C. Pietkowski

TEMP. +40°

TOWNSHIP VENICE

Goldberg

SECTION 6

T 1 N R 17 E

TYPE MONUMENT P.K./WASHER

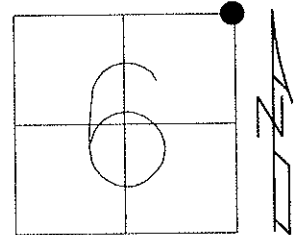
ON SURFACE - ~~BELOW~~ ON

LEFT - ☉ PAV'T - RIGHT ON

10.3' TO LT. EDGE PAVEMENT

S.L.M. 1369+31.99

Grid: Northing: 515570.773 Easting: 1847544.536



RECORD: 11-02-82
 PI STA 1421+59.62
 SET PK&WASHER ATOP BOAT SPK
 & WASHER ATOP RR SPK
 IRON STAKE (FIELD BOOK #59 FROM LOFT).

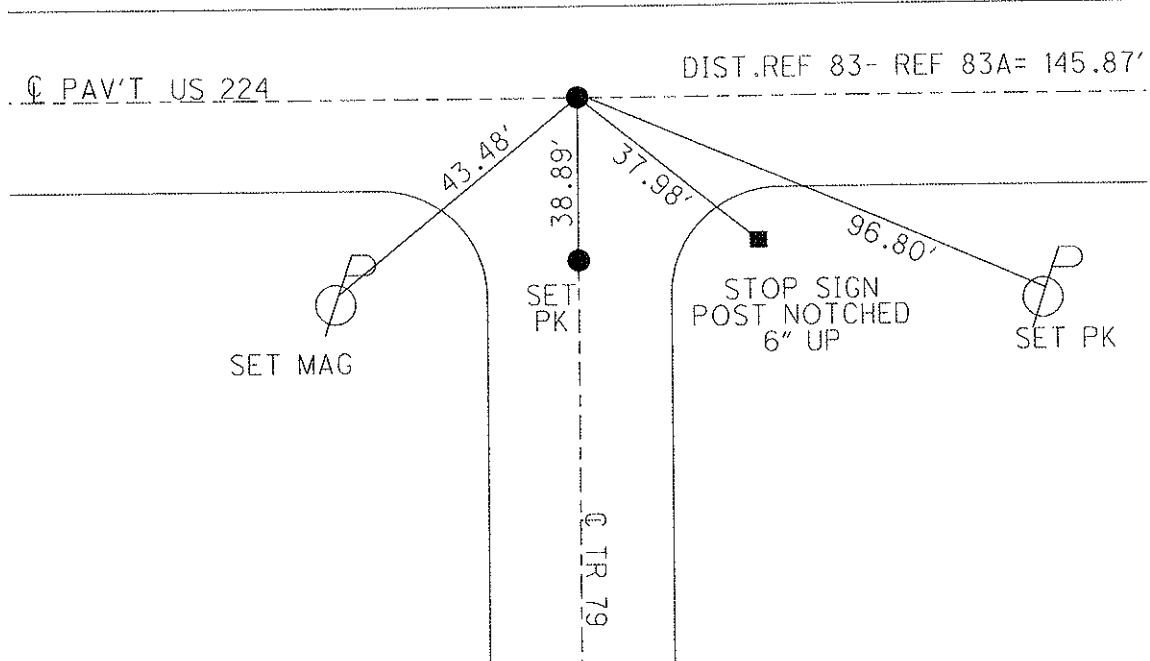
FD P.K./WASHER
 7/1/92 JLR

RESET P.K./WASHER
 12/7/92 JLR

FD P.K./WASHER
 1/17/08

SET MAG/WASHER
 8/5/09 KPM
 ALL POINTS TIED
 WITH A 200' TAPE.

RESET MAG/WASHER
 10/14/09 KPM



O.D.O.T. DISTRICT 2 SURVEY OFFICE

PERSONNEL

REFERENCE NO. 83

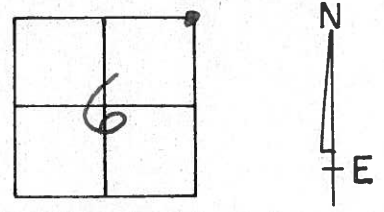
SHEET 22 OF 32

NOTES Cheney
 H.C. Ripple
 R.C. BARBOUR
Geyman

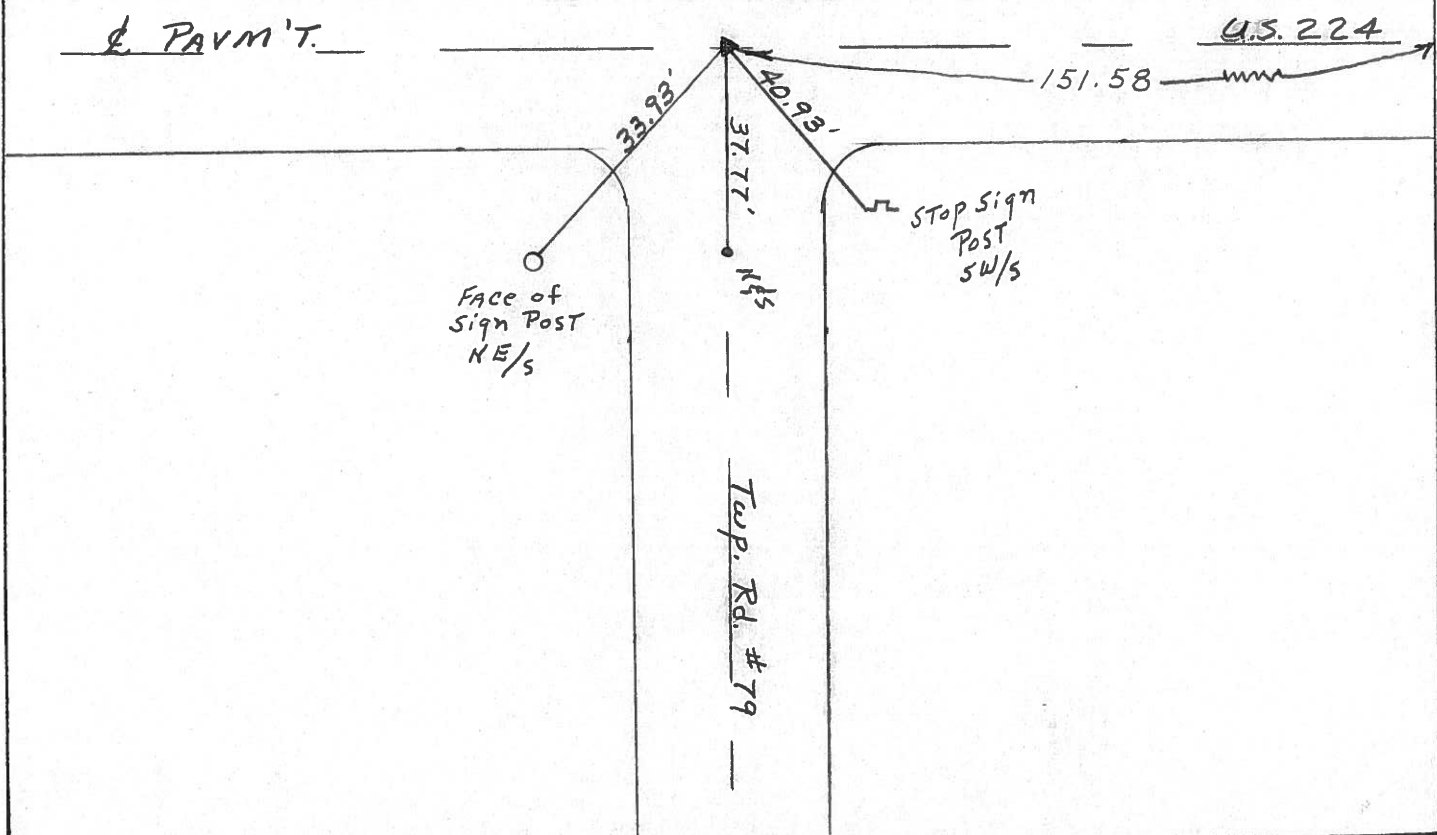
DATE 16-01-92
 WEATHER cloudy
 TEMP. 65°

ROUTE U.S. 224
 COUNTY Seneca
 TOWNSHIP Venice
 SECTION 6
T 1 N R 17 E

TYPE MONUMENT ⁷⁻⁰¹⁻⁹² Ed. P.K. Washer Reset P.K. Washer
 ON SURFACE - BELOW yes 12-07-92
J.L.R.
~~LEFT - C. PAV'T.~~ - RIGHT yes
10' TO RT. EDGE PAVEMENT
 S.L.M. 1368+48



Record: 11-02-82
 P.I. STA. 1421+59.62 ±
 SET P.K. & WASHER ATop boat spk.
 & WASHER ATop RR. spk.
 IRON STAKE (Field Book #59 from Left)



County Seneca S.R. 224

Date 11/02/82 Drawn 11/04/82

Township Venice

Weather sunny - windy

Section 6

Temp. 65°

T/LN, RIZE

Personnel Cronin

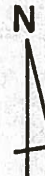
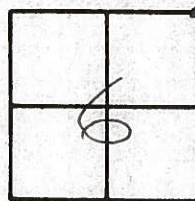
Ripple

Geyman

Mosser

Barbour

83



Twp. Rd. #79

P.I.

1421+59.62±

set P.K. & washer atop boat

spike & washer atop R.L. spike

Iron stake - Field Book #59 (from loft)

151.54 Meas

Twp. Rd. #79

38.95'

Load Sign Post

R.U.S. R/W U.S. #224

5191.70 T.C.C. #23

PERSONNEL TITLE PERSONNEL TITLE

COUNTY Seneca DATE 7-18-68

Schneider

S. R. U.S. # 224 WEATHER Fair

Mosser

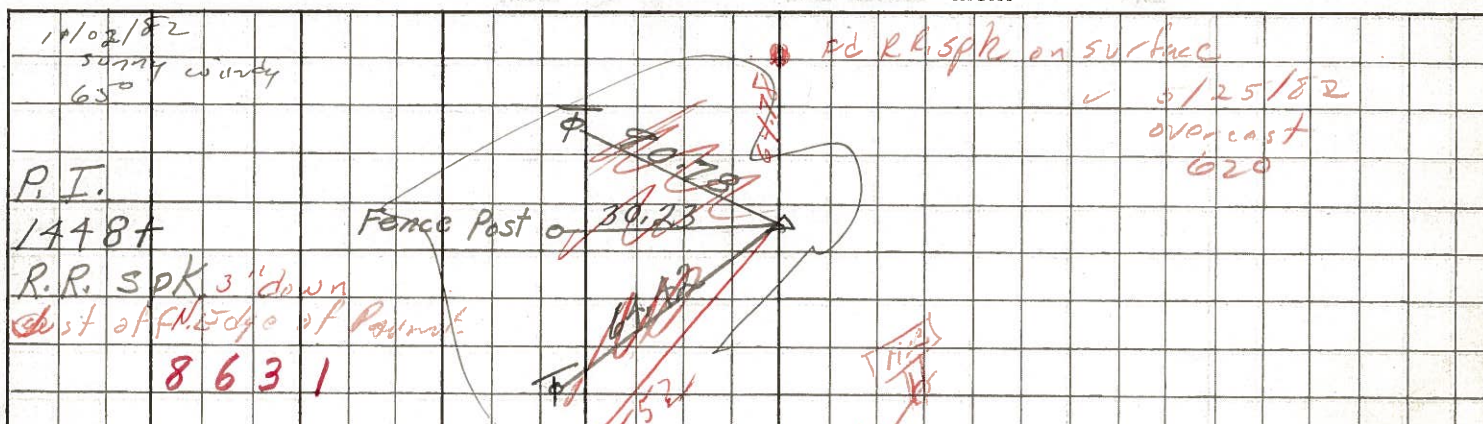
SEC. S.R. #100 to Attica TEMP. 50°

Barbour

Potts

DESCRIPTION Ties for control Points JOB NO.

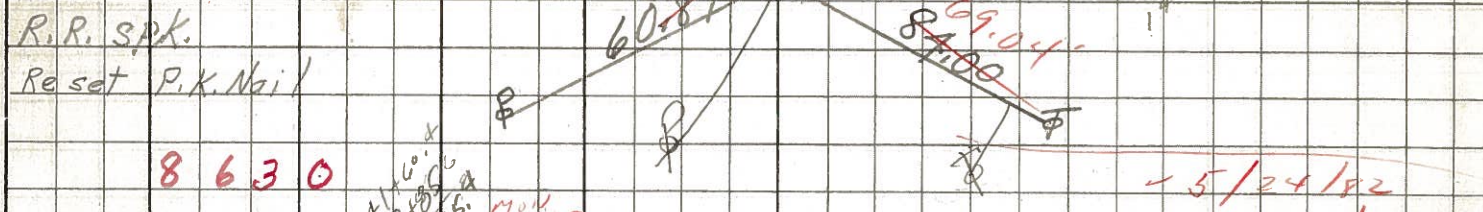
86



10/25/82
sunny windy
65°

P.I.
1448+
R.R. spk 3' down
Dist of fence edge of road
8631

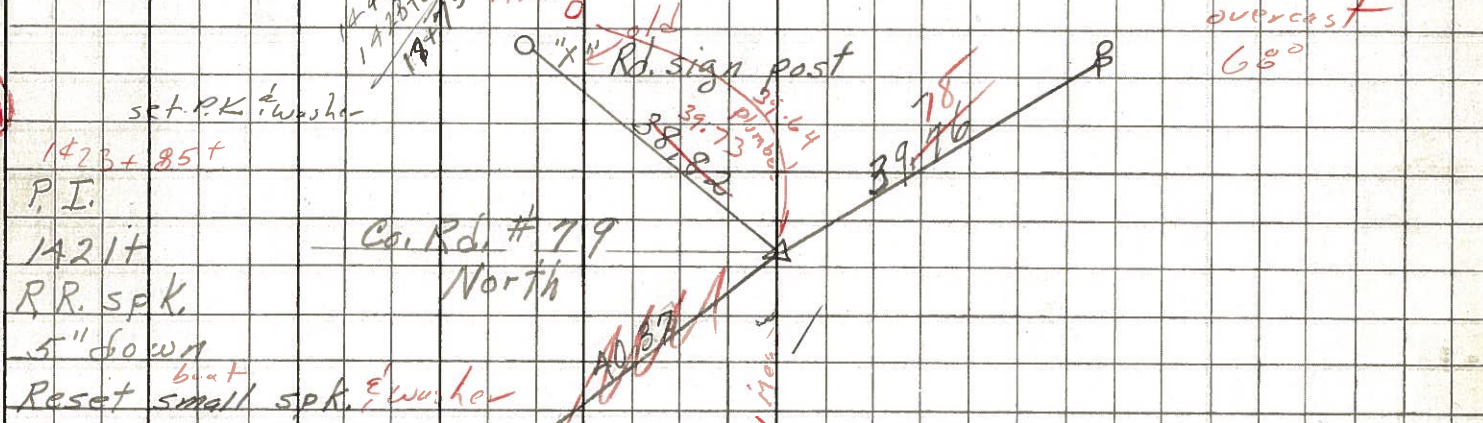
84



did not reset not enough B/k top
set P.K. & washer

P.O.T.
1438+
R.R. spk.
Reset P.K. Nail
8630

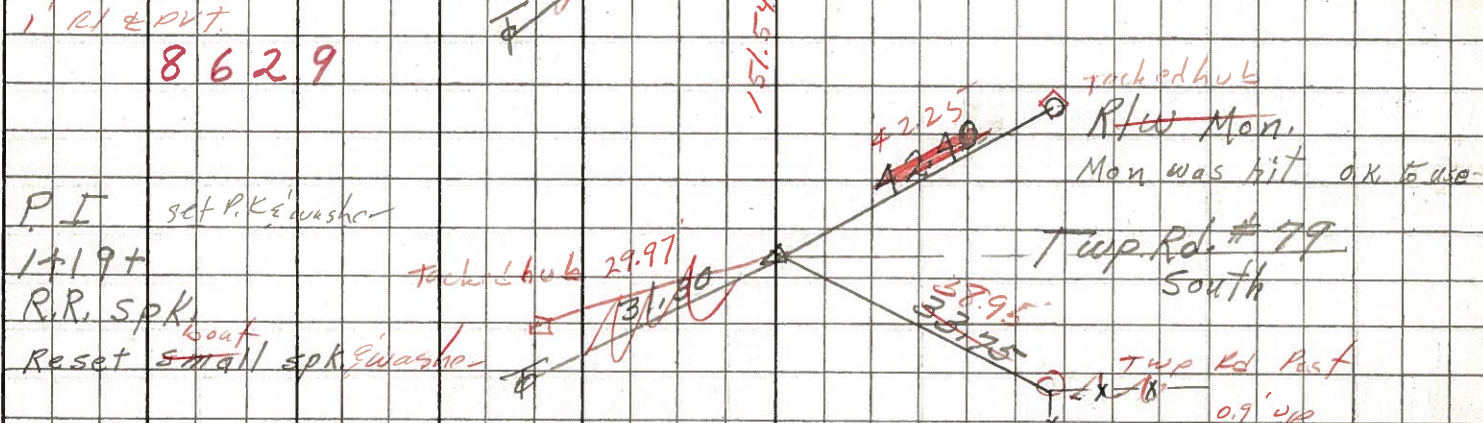
83-A



set P.K. & washer

1423+ 85+
P.I.
1421+
R.R. spk.
5" down
Reset small spk. & washer
1' R.I. & P.V.T.
8629

83



racked hub

P.I. set P.K. & washer
1419+
R.R. spk.
Reset small spk. & washer
8628

R/W Mon.
Mon was hit ok to use

Twp. Rd. #79 South
Twp Rd Post
0.9' up

PERSONNEL TITLE PERSONNEL TITLE

COUNTY Seneca DATE 1-12-68

S. R. U.S. # 224 WEATHER

SEC. TEMP.

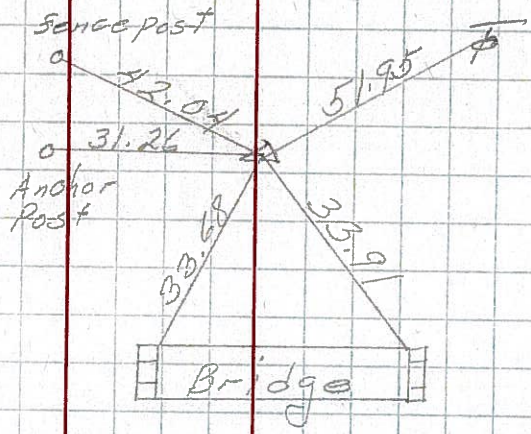
DESCRIPTION S.R. # 19 - A H'ica JOB NO.

LEFT CENTER LINE RIGHT

81

P.T. 1396+58.72
R.R. spk. on & R/W

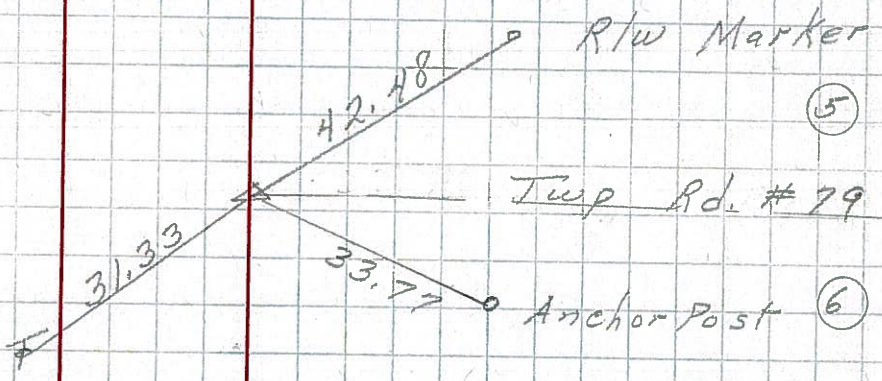
192A



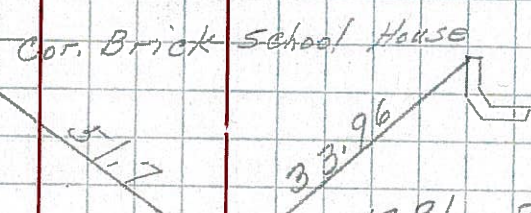
83

105+41.7
 $\Delta = 0^\circ 04' RT$
R.R. spk. on & R/W

193



31

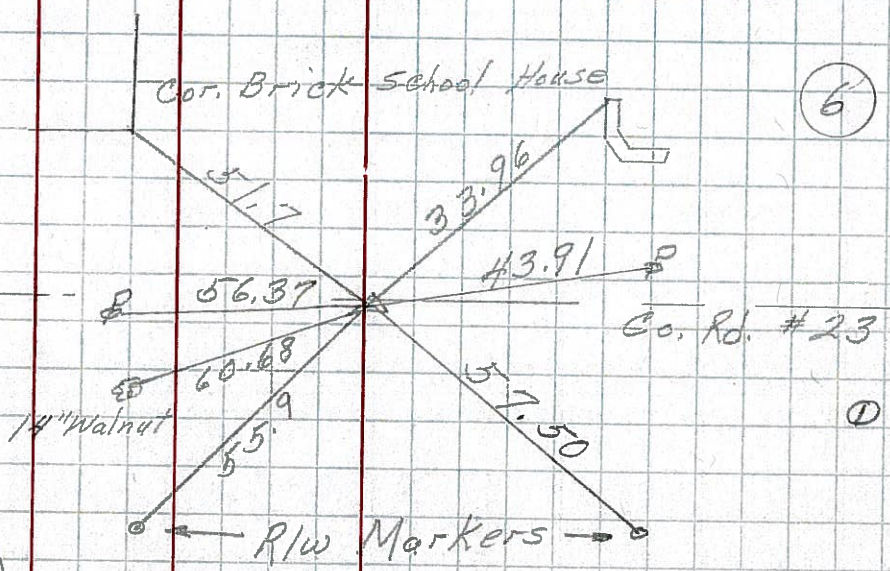


78

53+47.9
 $\Delta = 0^\circ 03' Lt$
R.R. spk. set
over cor. stone
& R/W

192

36



End Sec D start sec. F
53+47.9 sec. D = 54+00
Sec. F

PERSONNEL TITLE PERSONNEL TITLE

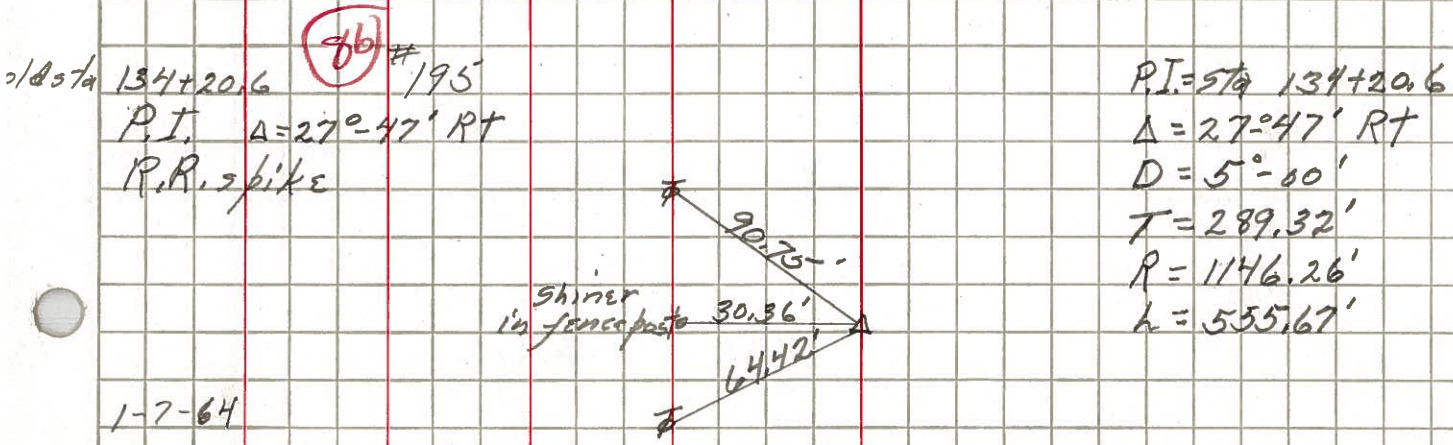
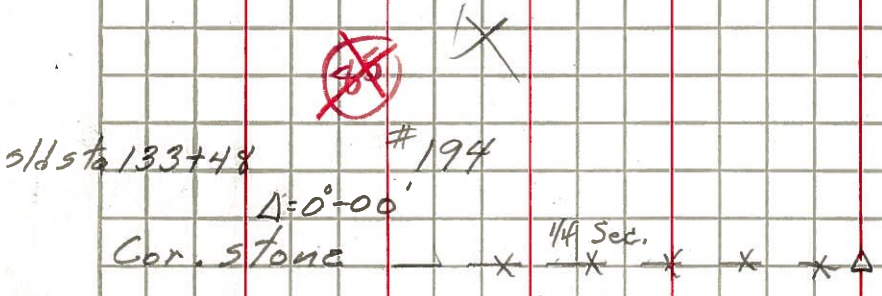
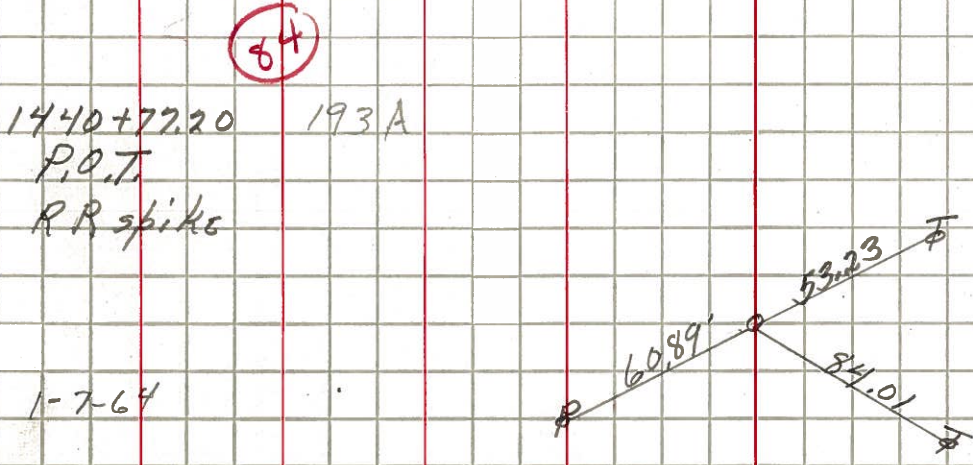
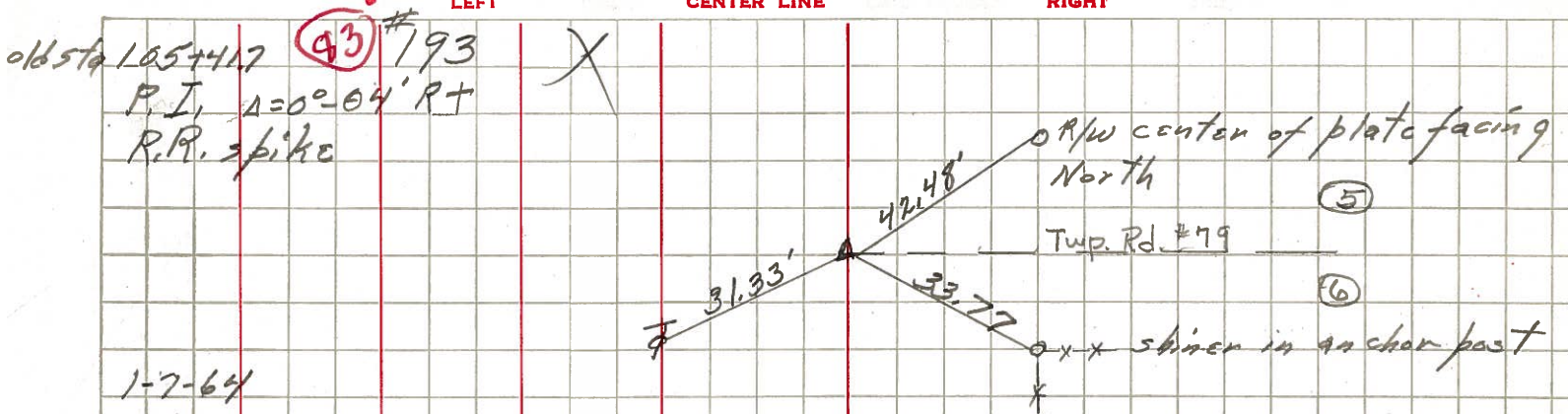
KraBill
Kowaleski
Brooks

COUNTY Seneca DATE _____

S. R. 224 WEATHER _____

SEC. _____ TEMP. _____

DESCRIPTION LEFT CENTER LINE RIGHT JOB NO.



PERSONNEL TITLE PERSONNEL TITLE

COUNTY Seneca

DATE 10-11-49

S. R. #224

WEATHER

SEC. G-D-F-E

TEMP.

DESCRIPTION S.H. #272

JOB NO.

LEFT

CENTER LINE

RIGHT



Sta. 54+00

Same ties as sta 53+49.9

Sec. D.

#192

56.75' S.E. 10" Elm

43.2' S.E. R/W Marker

83

Sta. 105+41.7

$\Delta = 0^\circ - 04' \text{ Rt.}$

R.R. Spike on $\frac{1}{2}$ R/W

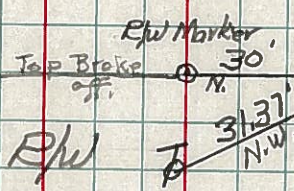
6-26-59

#

8-10-59

193

Reset.



Sta. 133+48

Cor. Stone

#194

86

Sta. 134+20.6

$\Delta = 27^\circ - 47' \text{ Rt.}$

RE

#195

Sta. 162+27.2

$\Delta = 0^\circ - 23' \text{ Rt.}$

R.R. Spike set over
Cor. Stone on $\frac{1}{2}$ R/W

6-26-59

Reset 8-10-59 196

