

O.D.O.T. DISTRICT 2 SURVEY OFFICE (USE ONLY)

PERSONNEL

REFERENCE NO. 83 A

SHEET 29 OF 37

NOTES RHOADES

DATE 11/8/23

ROUTE US 224

H.C. AUBLE

WEATHER CLOUDY

COUNTY SENECA

R.C. ASTON

TEMP. 51°

TOWNSHIP REED

NIESE

SECTION 31

DWG BY RHOADES

PID 101217

T 2 N R 17 E

TYPE MONUMENT MAG/WASHER

ON SURFACE - ~~BELOW~~ ON

OFFSET ☉ PAVEMENT ON LT : RT

10.6' TO RT EDGE PAVEMENT

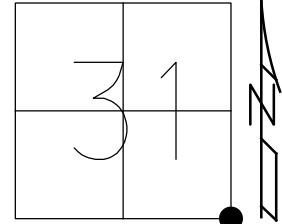
STATION: 1370+77.85

HORZ. DATUM: NAD83 2011

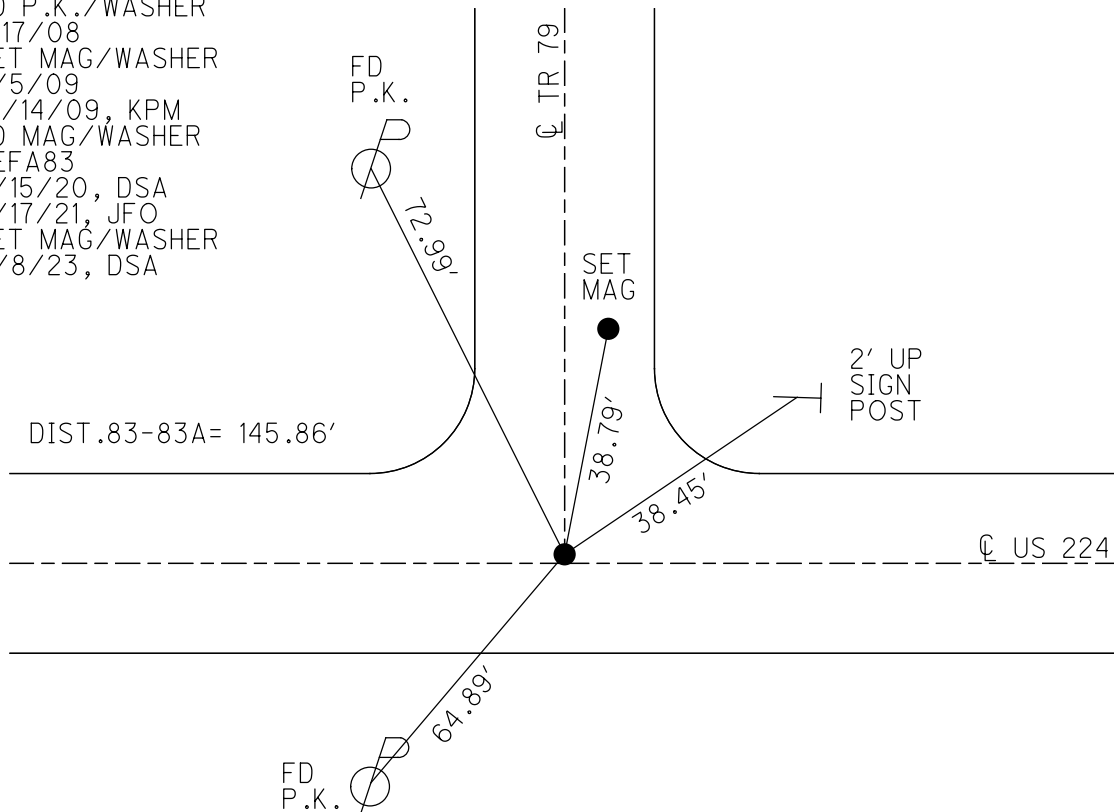
GEOID: NAVD88 2018

GRID: NORTHING: 515569.983

EASTING: 1847690.464



RECORD:
 FD P.K./WASHER
 7/1/92
 SET P.K./WASHER
 12/7/92, JLR
 FD P.K./WASHER
 1/17/08
 SET MAG/WASHER
 8/5/09
 10/14/09, KPM
 FD MAG/WASHER
 REFA83
 9/15/20, DSA
 3/17/21, JFO
 SET MAG/WASHER
 11/8/23, DSA



O.D.O.T. DISTRICT 2 SURVEY OFFICE (USE ONLY)

PERSONNEL

REFERENCE NO. 83 A

SHEET 27 OF 33

NOTES RHOADES

DATE 3/17/21

ROUTE US 224

H.C. O'DONNELL

WEATHER FAIR

COUNTY SENECA

R.C. _____

TEMP. 50°

TOWNSHIP REED

DWG BY NIESE PID PAVE TRAIN

SECTION 31

T 2 N R 17 E

TYPE MONUMENT MAG/WASHER

ON SURFACE - ~~BELOW~~ ON

OFFSET ☉ PAVEMENT ON LT : RT

10.6' TO RT EDGE PAVEMENT

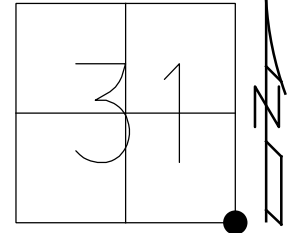
STATION: 1370+77.85

HORIZ.DATUM: NAD83 2011

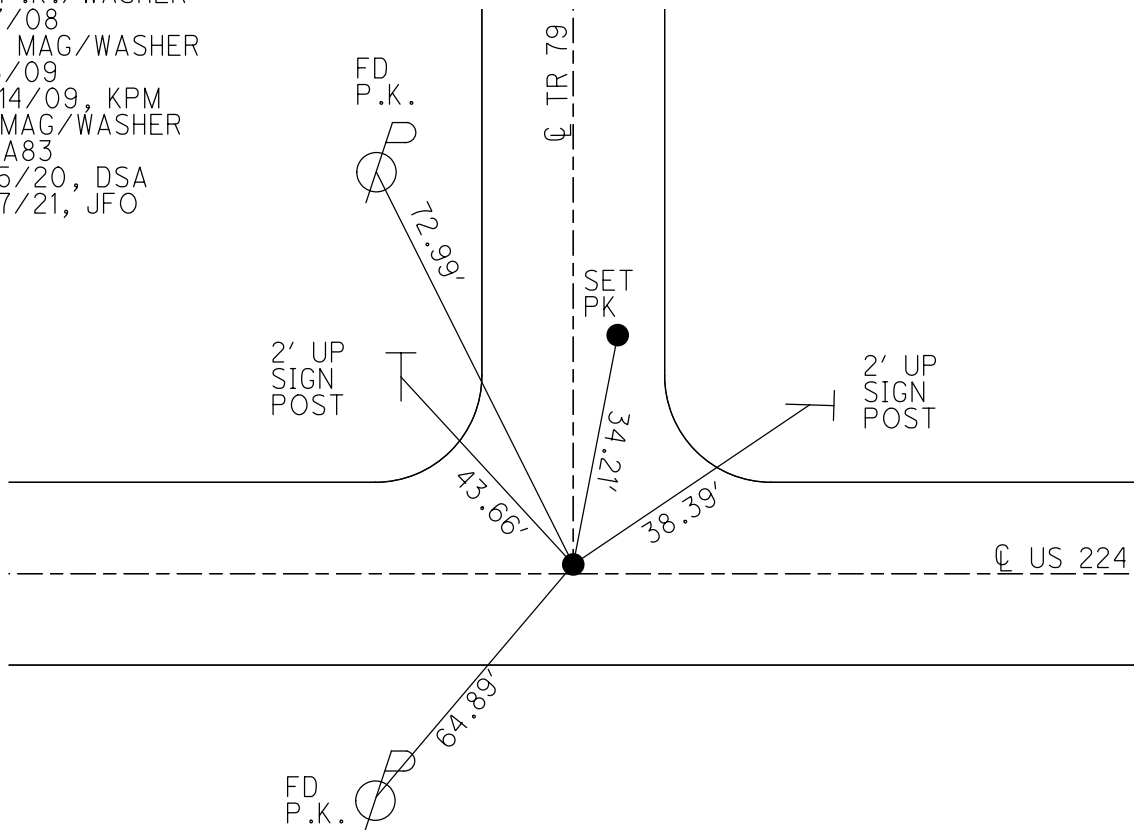
GEOID: NAVD88 2012A

GRID: NORTHING: 515570.040

EASTING: 1847690.417



RECORD:
 FD P.K./WASHER
 7/1/92
 SET P.K./WASHER
 12/7/92, JLR
 FD P.K./WASHER
 1/17/08
 SET MAG/WASHER
 8/5/09
 10/14/09, KPM
 FD MAG/WASHER
 REFA83
 9/15/20, DSA
 3/17/21, JFO



O.D.O.T. DISTRICT 2 SURVEY OFFICE (USE ONLY)

PERSONNEL

REFERENCE NO. 83 A

SHEET 26 OF 35

NOTES Moser

DATE 8-5-09

ROUTE U.S. 224

H.C. Moser

WEATHER Fair

COUNTY SENECA

R.C. Pietkowski

TEMP. +40°

TOWNSHIP REED

Goldberg

SECTION 31

T 2 N R 17 E

TYPE MONUMENT P.K./WASHER

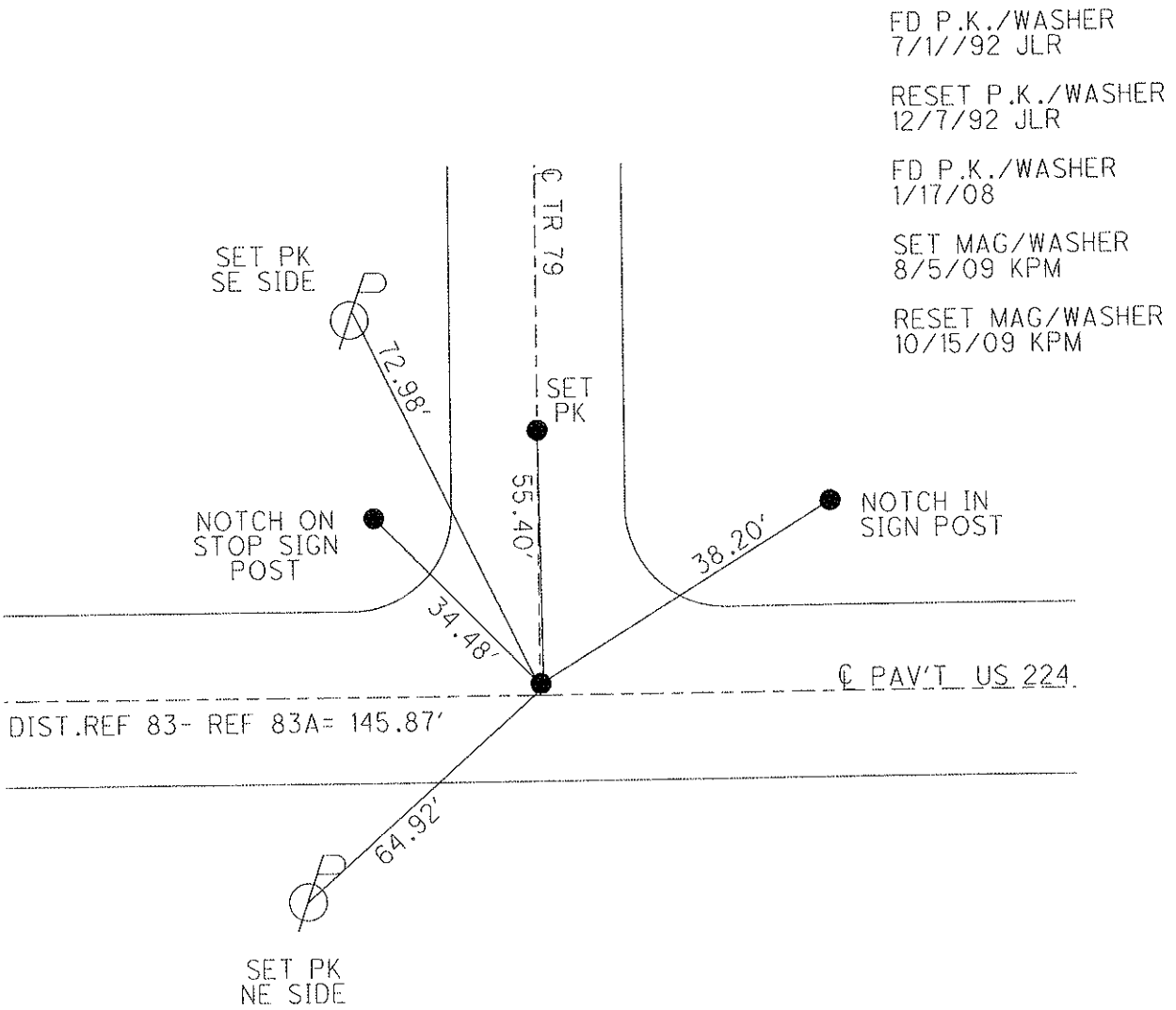
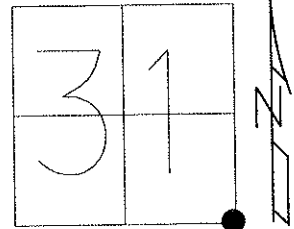
ON SURFACE - ~~BELOW~~ ON

LEFT - Q PAV'T - RIGHT 1'

10.6' TO RT. EDGE PAVEMENT

S.L.M. 1370+77.85

Grid: Northing: 515570.040 Easting: 1847690.417



O.D.O.T. DISTRICT 2 SURVEY OFFICE

PERSONNEL

REFERENCE NO. 83-A

SHEET 23 OF 32

NOTES Cheney

H.C. RIPPLE

R.C. BARBOUR

GEYMAN

DATE 12-01-92

WEATHER Cloudy

TEMP. 65°

ROUTE U.S.# 224

COUNTY Seneca

TOWNSHIP Reed

SECTION 31

T2N R17E

TYPE MONUMENT ⁷⁻⁰¹⁻⁹² ~~Ed. P.K. Washer~~ Reset P.K. Washer

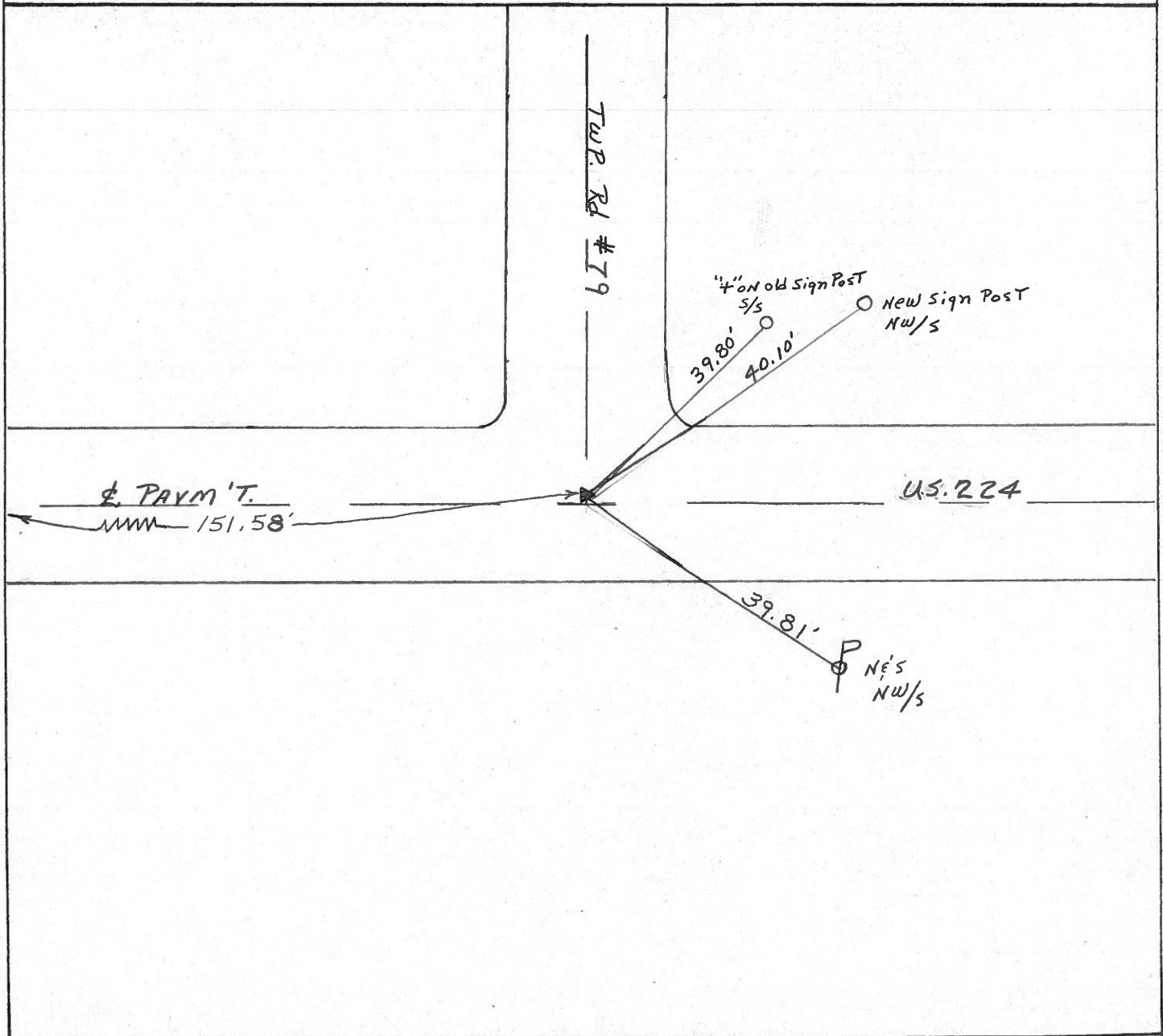
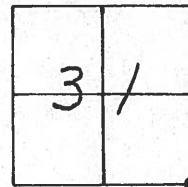
ON SURFACE - ~~BELOW~~ yes

~~LEFT~~ - & PAV'T. - RIGHT 1'

9' TO RT. EDGE PAVEMENT

S.L.M. 1370 + 52

12-07-92
J.L.R



County Seneca S.R. 224

Date 11/02/82 Drawn 11/05/82

Township Reed

Weather sunny

Section 31

Temp. 65°

T2N, R12E

Personnel Cronin

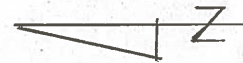
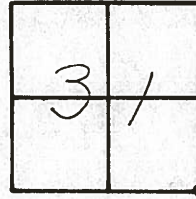
Ripple

Geyman

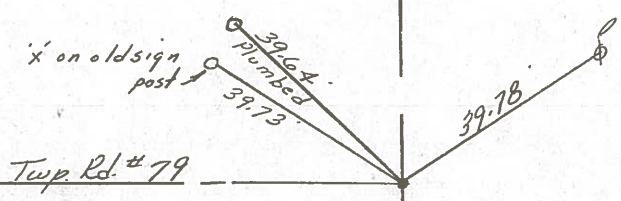
Mosser

Barbour

83-A



P.I. ?
 1423 + 11.16 t
 set P.K. & washer atop boat
 spike & washer atop R.R. spike
 7" below surface



151.54' Meas.
 E.R/W U.S. #224

Twp. Rd. # 79

PERSONNEL TITLE PERSONNEL TITLE

Schneider

Masser

Barbour

Potts

COUNTY Seneca

DATE

S. R. U.S. # 224

WEATHER

Fair

SEC. S.R. #100 to Attica

TEMP.

50°

DESCRIPTION Ties for Control Points

JOB NO.

LEFT

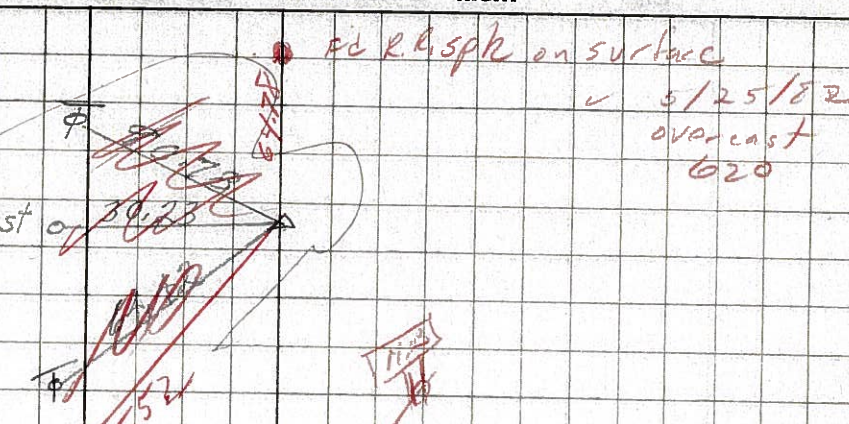
CENTER LINE

RIGHT

86

1/10/82
sunny windy
63°

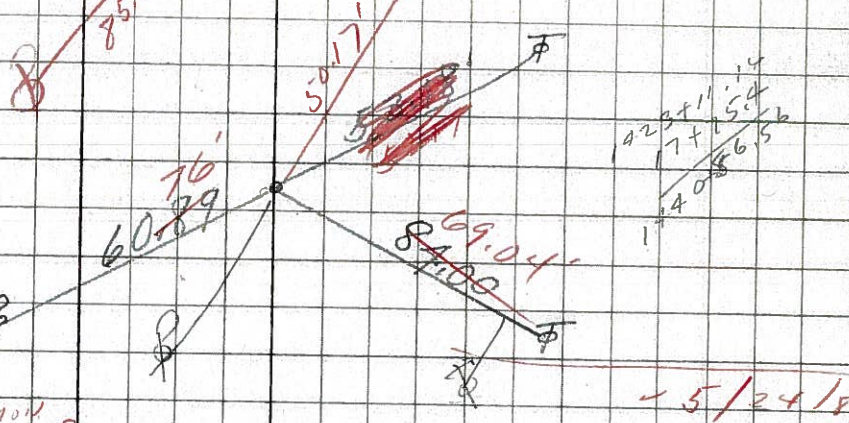
P.I.
1448+
R.R. SPK 3" down
Dist of R.R. Edge of Roadway
8631



84

did not reset not enough B/L etc
set P.K. & washer

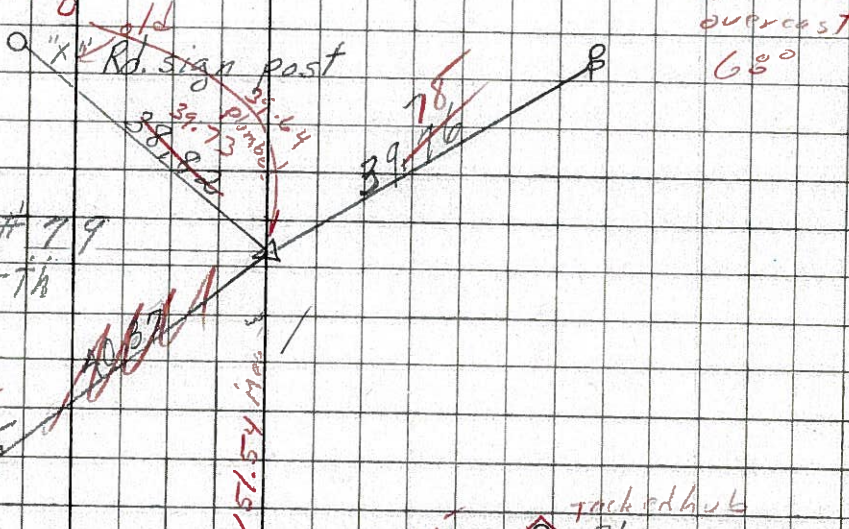
P.O.T.
1438+ 1441 + 60+
R.R. SPK.
Reset P.K. Nail
8630



83-A

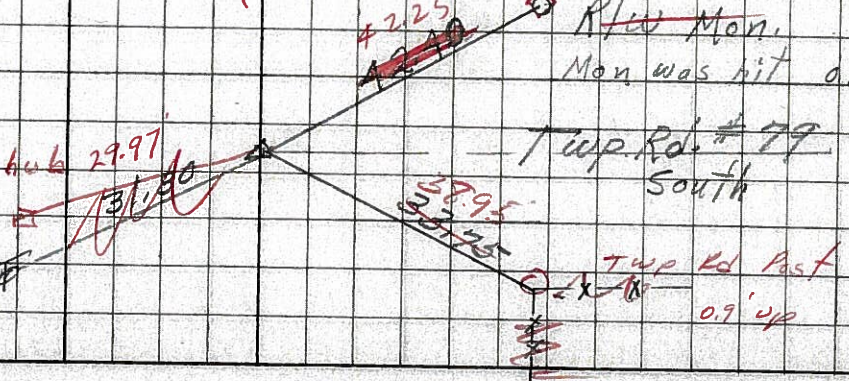
set P.K. & washer
1423+ 85+

P.I.
1421+
R.R. SPK.
5" down
Reset small SPK & washer
1" R.R. & P.V.T.
8629



83

P.I. set P.K. & washer
1419+
R.R. SPK
Reset small SPK & washer
8628



PERSONNEL TITLE PERSONNEL TITLE

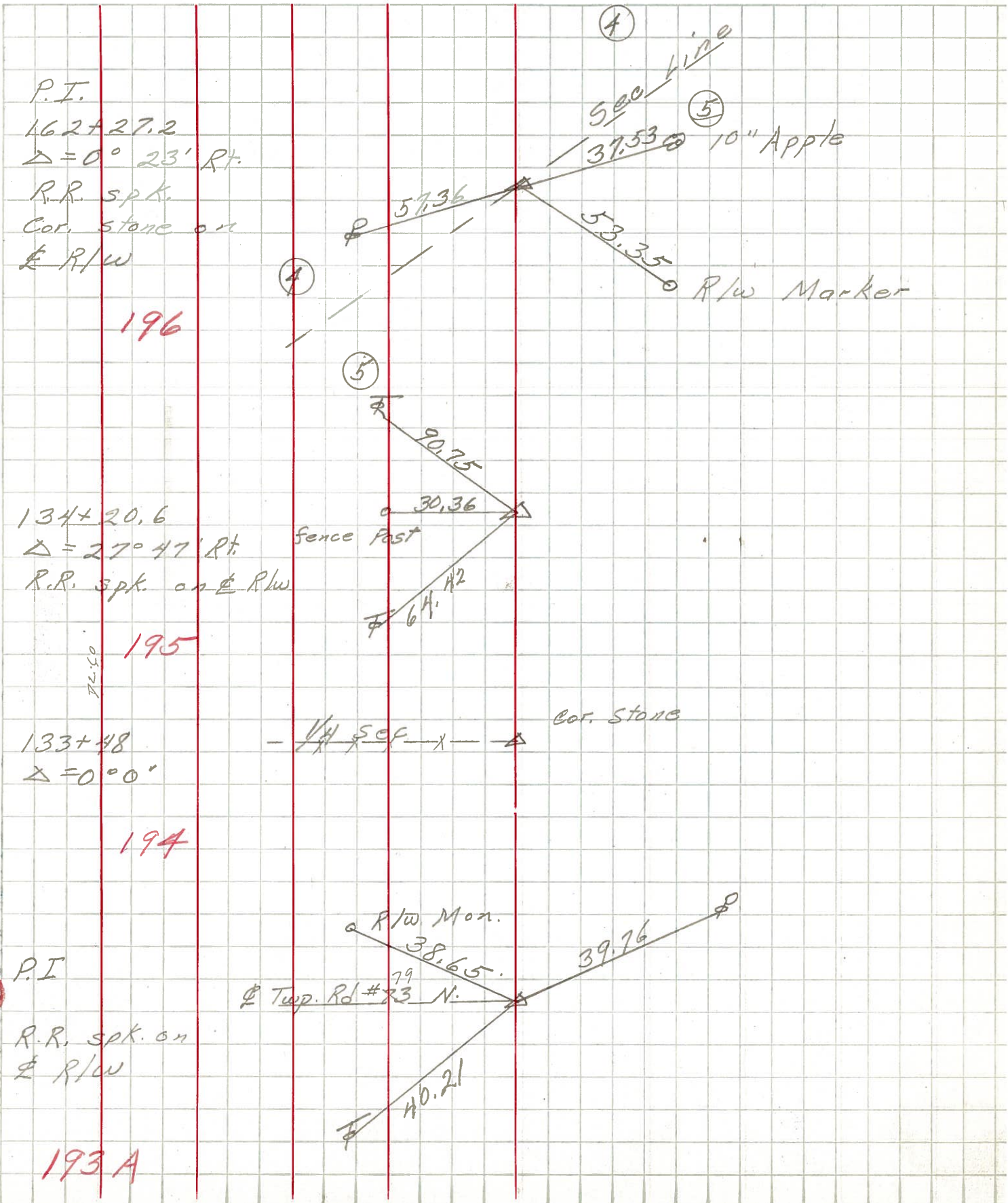
COUNTY Seneca DATE 1-12-66

S. R. U.S. # 224 WEATHER

SEC. TEMP.

DESCRIPTION S.R. # 19 - A Hica JOB NO.

LEFT CENTER LINE RIGHT



86

83-A