

O.D.O.T. DISTRICT 2 SURVEY OFFICE (USE ONLY)

PERSONNEL

REFERENCE NO. 84

SHEET 30 OF 37

NOTES RHOADES

DATE 11/9/23

ROUTE US 224

H.C. AUBLE

WEATHER CLOUDY

COUNTY SENECA

R.C. ASTON

TEMP. 48°

TOWNSHIP REED

NIESE

SECTION 32

DWG BY RHOADES PID 101217

T 2 N R 17 E

TYPE MONUMENT MAG/WASHER

ON SURFACE - ~~BELOW~~ ON

OFFSET 0 PAVEMENT ON LT : RT

10.1' TO RT EDGE PAVEMENT

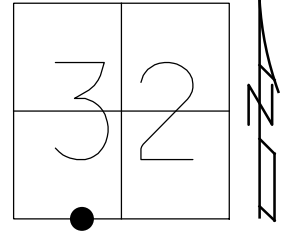
STATION: 1388+44.8

HORZ.DATUM: NAD83 2011

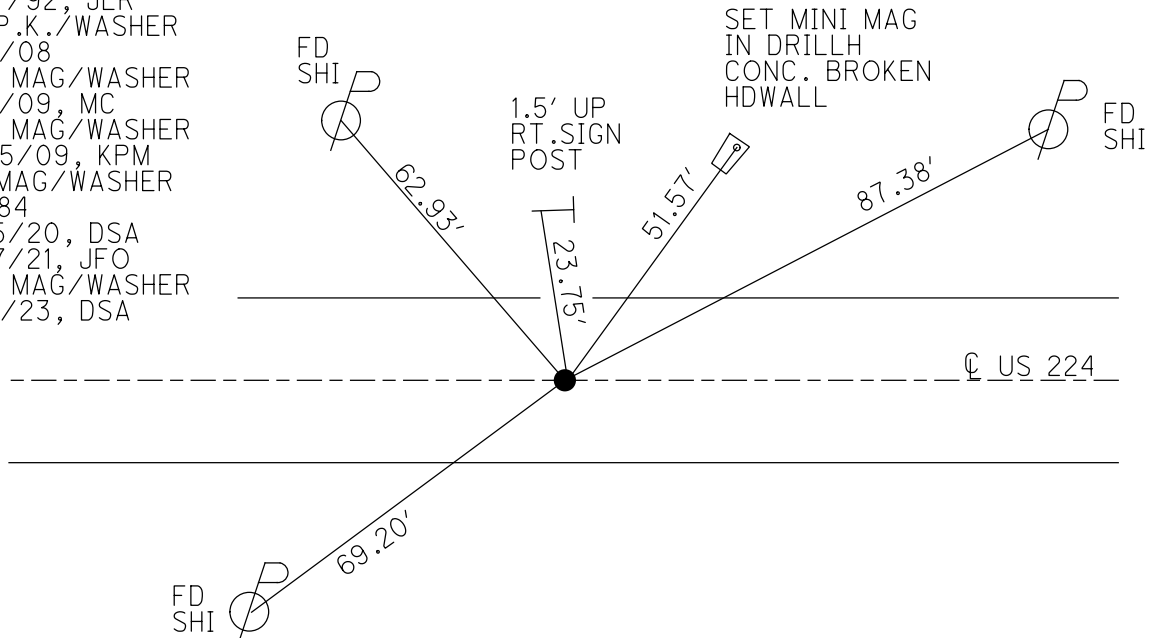
GEOID: NAVD88 2018

GRID: NORTHING: 515551.792

EASTING: 1849457.398



RECORD: P.O.T.
 STA.1440+86.56
 FD P.K.NAIL
 0.5' DOWN
 ATOP R.R.SPIKE
 11/2/82
 SET P.K./WASHER
 12/7/92, JLR
 FD P.K./WASHER
 5/6/08
 SET MAG/WASHER
 8/5/09, MC
 SET MAG/WASHER
 10815/09, KPM
 FD MAG/WASHER
 REF84
 9/15/20, DSA
 3/17/21, JFO
 SET MAG/WASHER
 11/9/23, DSA



O.D.O.T. DISTRICT 2 SURVEY OFFICE (USE ONLY)

PERSONNEL _____

REFERENCE NO. 84

SHEET 28 OF 33

NOTES RHOADES DATE 3/17/21

ROUTE US 224

H.C. O'DONNELL WEATHER FAIR

COUNTY SENECA

R.C. _____ TEMP. 50°

TOWNSHIP REED

DWG BY NIESE PID PAVE TRAIN

SECTION 32

T 2 N R 17 E

TYPE MONUMENT MAG/WASHER

ON SURFACE - ~~BELOW~~ ON

OFFSET ☐ PAVEMENT ON LT : RT

10.1' TO RT EDGE PAVEMENT

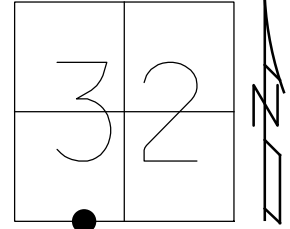
STATION: 1388+44.8

HORZ.DATUM: NAD83 2011

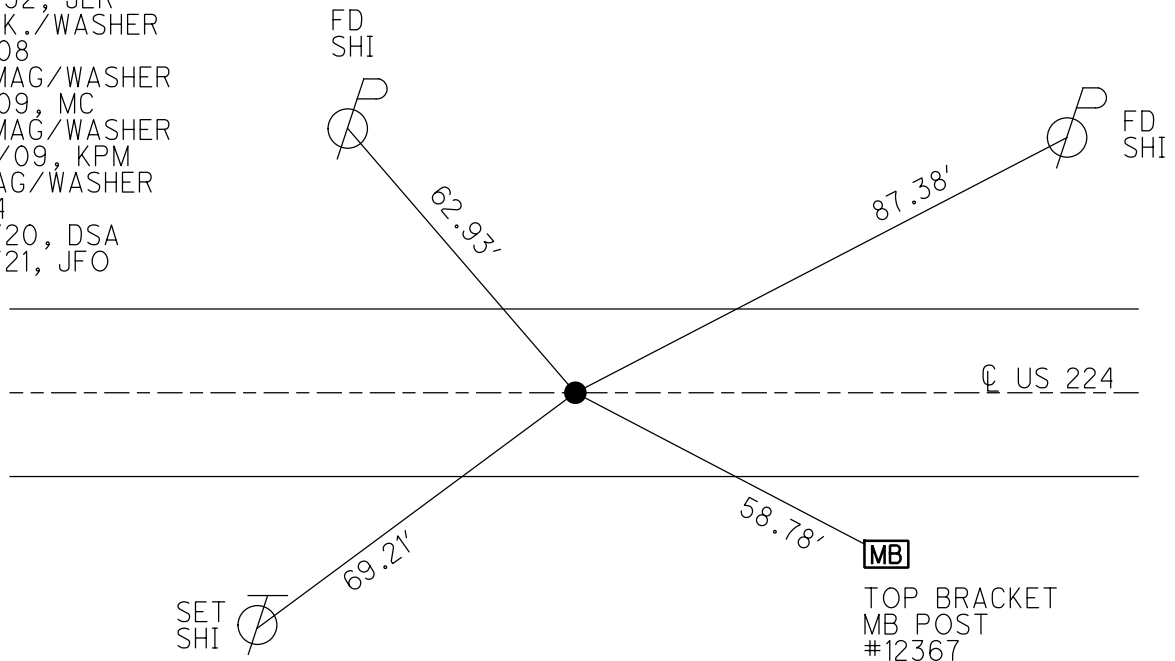
GEOID: NAVD88 2012A

GRID: NORTHING: 515551.821

EASTING: 1849457.297



RECORD: P.O.T.
 STA.1440+86.56
 FD P.K.NAIL
 0.5' DOWN
 ATOP R.R.SPIKE
 11/2/82
 SET P.K./WASHER
 12/7/92, JLR
 FD P.K./WASHER
 5/6/08
 SET MAG/WASHER
 8/5/09, MC
 SET MAG/WASHER
 10815/09, KPM
 FD MAG/WASHER
 REF84
 9/15/20, DSA
 3/17/21, JFO



O.D.O.T. DISTRICT 2 SURVEY OFFICE

PERSONNEL

REFERENCE NO. 84

SHEET 27 OF 35

NOTES Moser

DATE 8-5-09

ROUTE U.S. 224

H.C. Moser

WEATHER Fair

COUNTY SENECA

R.C. Pietkowski
Goldberg

TEMP. +40°

TOWNSHIP REED & VENICE

SECTION 32

T 2 N R 17 E

TYPE MONUMENT P.K./WASHER

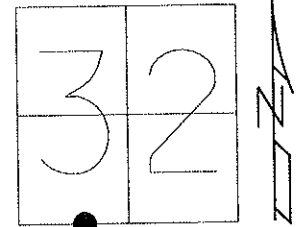
ON SURFACE - ~~BELOW~~ ON

LEFT - Q PAV'T - RIGHT ON

10.1' TO RT EDGE PAVEMENT

S.L.M. 1388+44.80

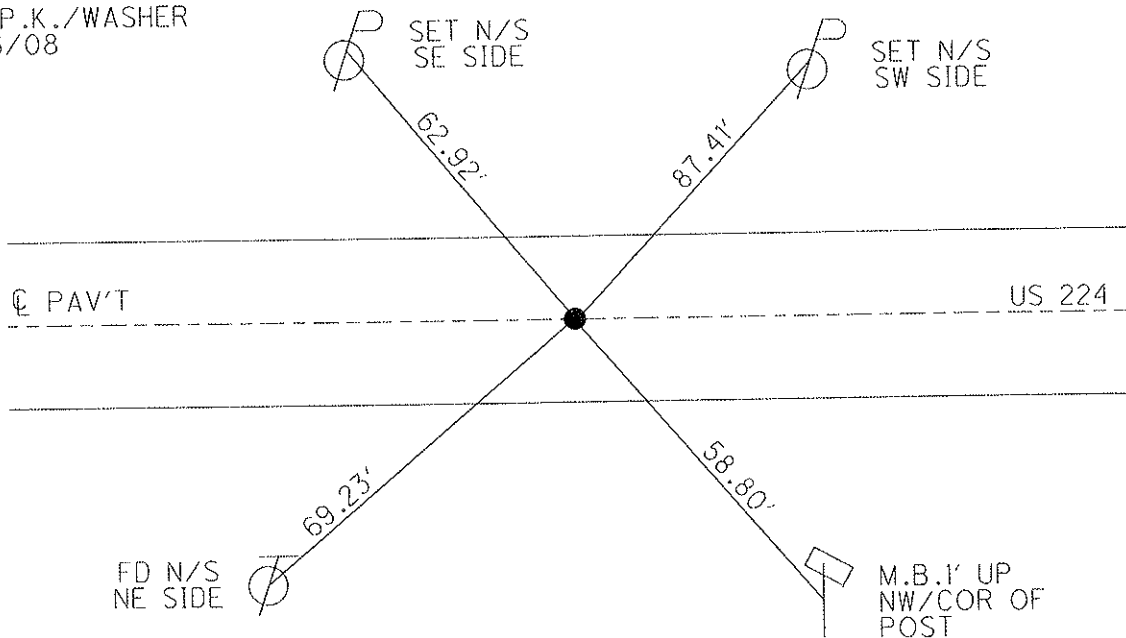
Grid: Northing: 515551.821 Easting: 1849457.297



RECORD: 11-02-82
POT STA 1440+86.56
PK 0.5" BELOW SURFACE
ATOP RR SPK.

FD/RESET P.K./WASHER
12/7/92 JLR

FD P.K./WASHER
5/6/08



SET MAG/WASHER
8/5/09 MB
ALL POINTS TIED
WITH A 200' TAPE.

RESET MAG/WASHER
10/15/09 KPM

O.D.O.T. DISTRICT 2 SURVEY OFFICE

PERSONNEL

REFERENCE NO. 84

SHEET 24 OF 32

NOTES Cheney
 H.C. RIPPLE
 R.C. BARBOUR
GEYMAN

DATE 11-01-92
 WEATHER Cloudy
 TEMP. 65°

ROUTE U.S. 224
 COUNTY Seneca
 TOWNSHIP Reed & Venice
 SECTION 32 & 5
 T² N R ¹⁷ E

11-02-82

TYPE MONUMENT Fd. P.K. & washer

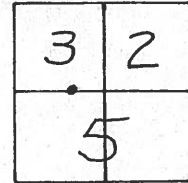
*Reset P.K. & washer
12-07-92
J.L.R.*

ON SURFACE - ~~BELOW~~ yes

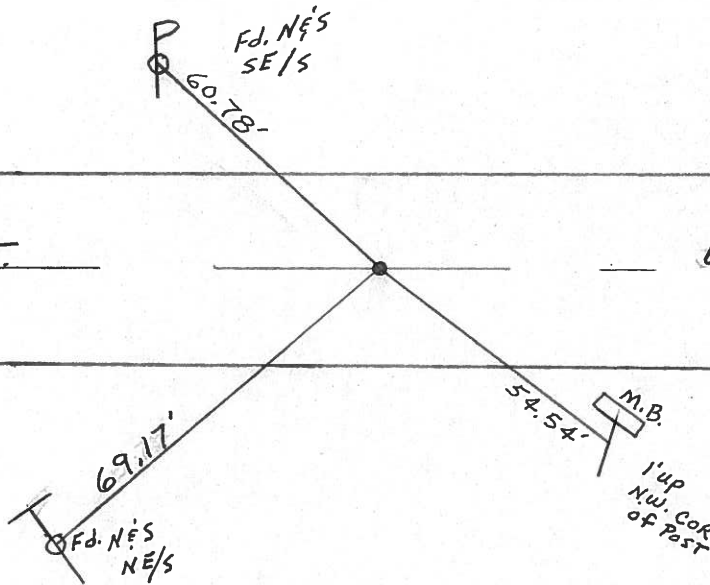
~~LEFT - & PAV'T. - RIGHT~~ yes

10' TO RT. EDGE PAVEMENT

S.L.M. 1388 + 11



Record: 11-02-82
 P.O.T. STA. 1440 + 86.56 ±
 P.K. 1/2" below SURFACE
 ATOP R.R. SPK.



County Seneca S.R. # 224

Date 11/02/82 Drawn 11/05/82

Township Reed & Venice

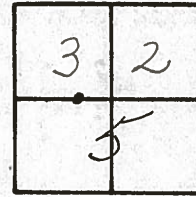
Weather sunny - windy

Section 32. & 5.

Temp. 65° windy

T² N, R¹⁷ E

Personnel Cronin



84

Ripple

Geyman

Mosser

Barbour

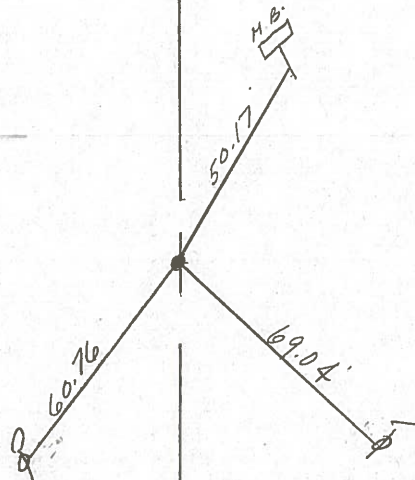


P.O.T.

1440 + 86.56 ±

P.K. 1/2" below surface at top

R.R. spike



E.R./W U.S. # 224

PERSONNEL TITLE PERSONNEL TITLE

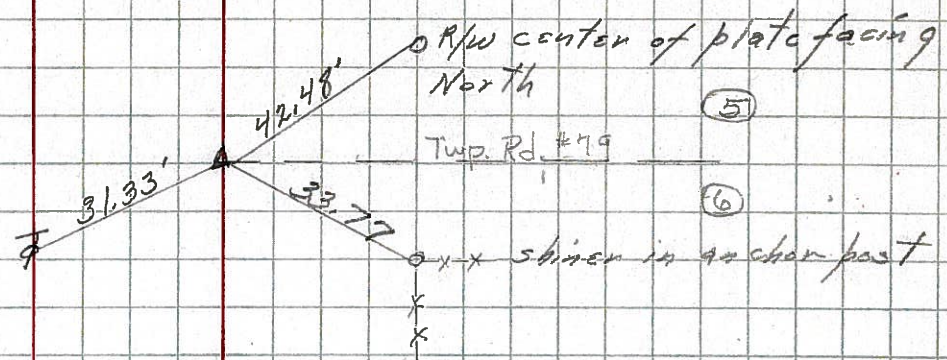
KraBill
Kowaleski
Brooks

COUNTY Seneca DATE _____
S. R. 224 WEATHER _____
SEC. _____ TEMP. _____

DESCRIPTION LEFT CENTER LINE RIGHT JOB NO.

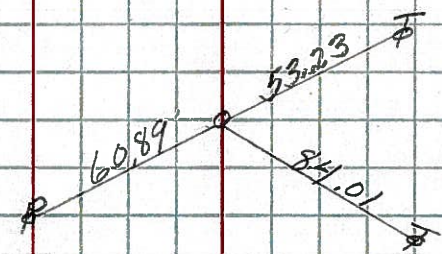
216 sta 105+41.7 **(43)** #193
P.I. $\Delta = 0^\circ - 04' RT$
R.R. spike

X



1-7-64

1440+77.20 **(44)** #193A
P.O.T.
R.R. spike



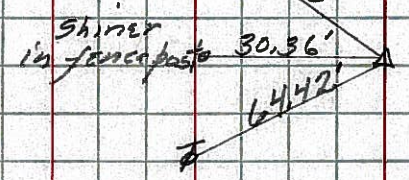
1-7-64

516 sta 133+48 ~~(45)~~ #194
 $\Delta = 0^\circ - 00'$
Cor. stone

X



18 sta 134+20.6 **(46)** #195
P.I. $\Delta = 27^\circ - 47' RT$
R.R. spike



1-7-64

P.I. = sta 134+20.6
 $\Delta = 27^\circ - 47' RT$
 $D = 5^\circ - 00'$
 $T = 289.32'$
 $R = 1146.26'$
 $L = 555.67'$