

O.D.O.T. DISTRICT 2 SURVEY OFFICE (USE ONLY)

PERSONNEL

REFERENCE NO. 84 A

SHEET 32 OF 37

NOTES RHOADES

DATE 11/9/23

ROUTE US 224

H.C. AUBLE

WEATHER CLOUDY

COUNTY SENECA

R.C. ASTON

TEMP. 48°

TOWNSHIP REED

NIESE

SECTION 32

DWG BY RHOADES

PID 101217

T 2 N R 17 E

TYPE MONUMENT MAG/WASHER

ON SURFACE - ~~BELOW~~ ON

OFFSET 0 PAVEMENT ON LT : RT

10.4' TO RT EDGE PAVEMENT

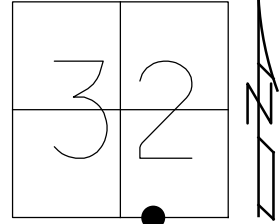
STATION: 1396+06.5

HORZ.DATUM: NAD83 2011

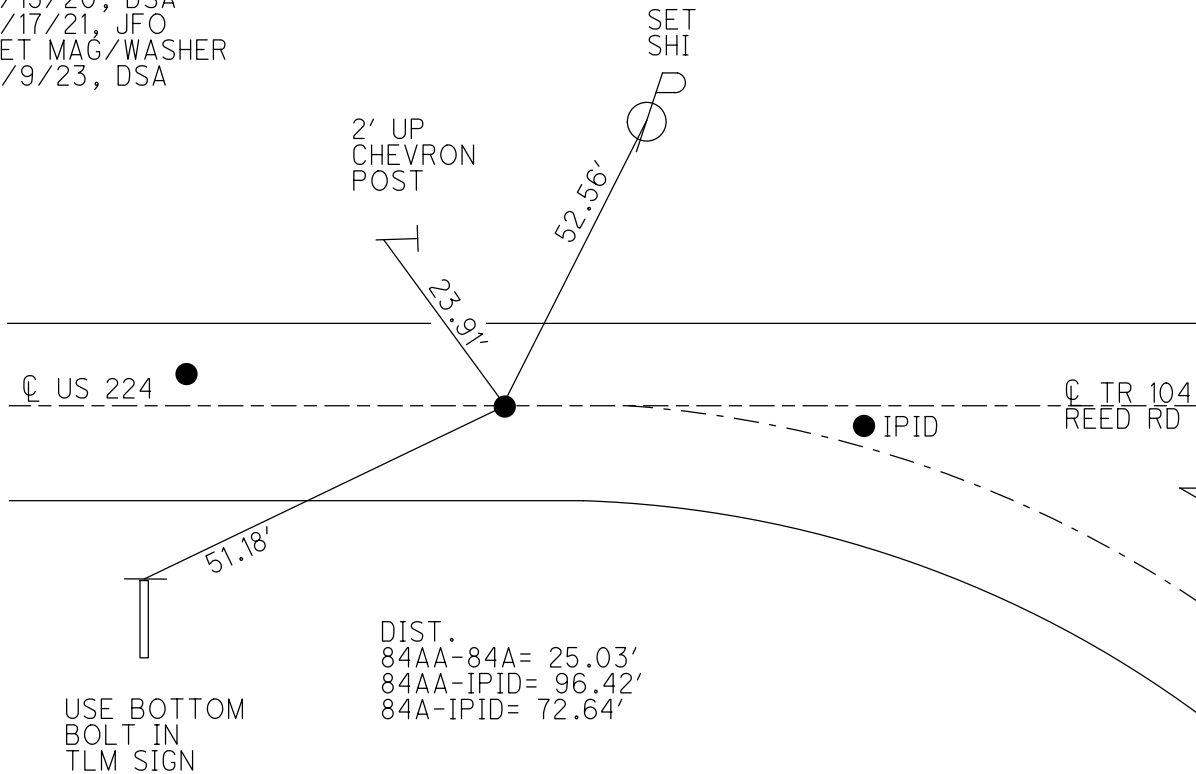
GEOID: NAVD88 2018

GRID: NORTHING: 515533.101

EASTING: 1850268.958



RECORD:
 SET MAG/WASHER
 8/5/09, MB
 SET MAG/WASHER
 10/15/09, KPM
 FD MAG/WASHER
 REFA84
 9/15/20, DSA
 3/17/21, JFO
 SET MAG/WASHER
 11/9/23, DSA



O.D.O.T. DISTRICT 2 SURVEY OFFICE (USE ONLY)

PERSONNEL

REFERENCE NO. 84 A

SHEET 29 OF 33

NOTES RHOADES

DATE 3/17/21

ROUTE US 224

H.C. O'DONNELL

WEATHER FAIR

COUNTY SENECA

R.C. _____

TEMP. 50°

TOWNSHIP REED

DWG BY NIESE PID PAVE TRAIN

SECTION 32

T 2 N R 17 E

TYPE MONUMENT MAG/WASHER

ON SURFACE - ~~BELOW~~ ON

OFFSET Q PAVEMENT ON LT : RT

10.4' TO RT EDGE PAVEMENT

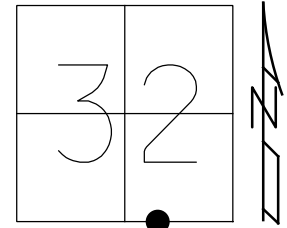
STATION: 1396+06.5

HORZ. DATUM: NAD83 2011

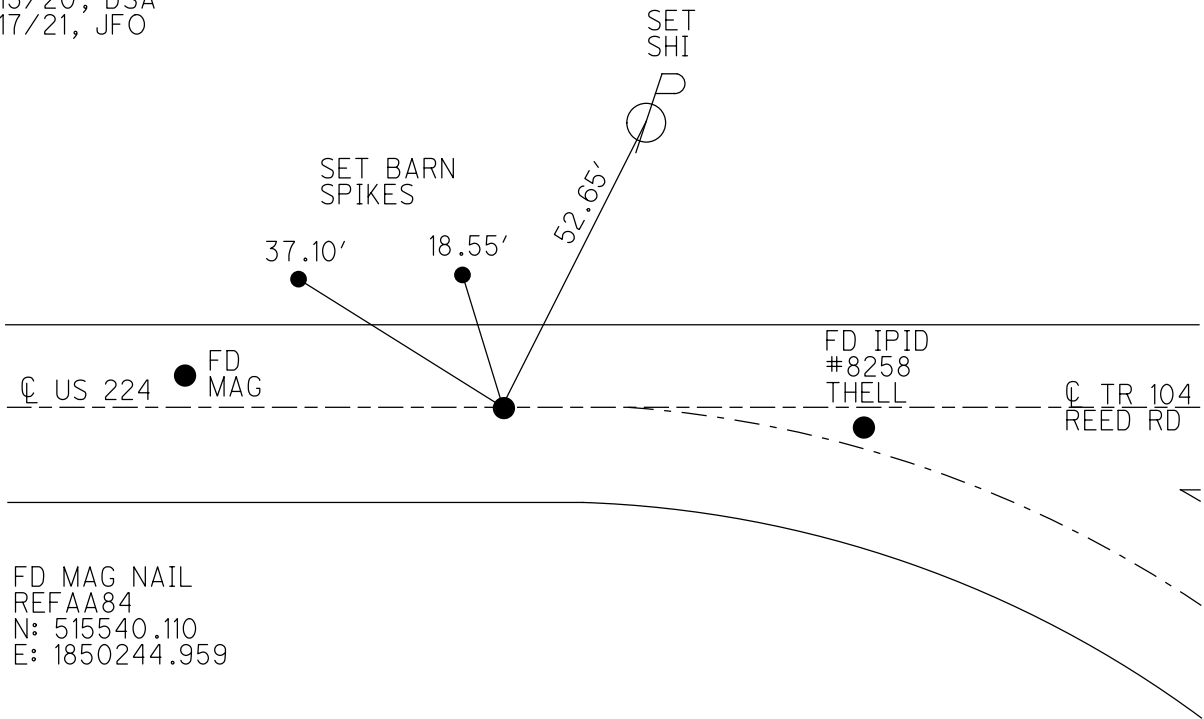
GEOID: NAVD88 2012A

GRID: NORTHING: 515533.164

EASTING: 1850268.923



RECORD:
 SET MAG/WASHER
 8/5/09, MB
 SET MAG/WASHER
 10/15/09, KPM
 FD MAG/WASHER
 REFA84
 9/15/20, DSA
 3/17/21, JFO



FD MAG NAIL
 REFAA84
 N: 515540.110
 E: 1850244.959

O.D.O.T. DISTRICT 2 SURVEY OFFICE

PERSONNEL

REFERENCE NO. .84 A

SHEET 28 OF 35

NOTES Moser

DATE 4-9-09

ROUTE SR 224

H.C. Moser

WEATHER Fair

COUNTY SENECA

R.C. Pietkowski

TEMP. +40°

TOWNSHIP REED

Goldberg

SECTION 5, 32

T 2 N R 17 E

TYPE MONUMENT MAG NAIL

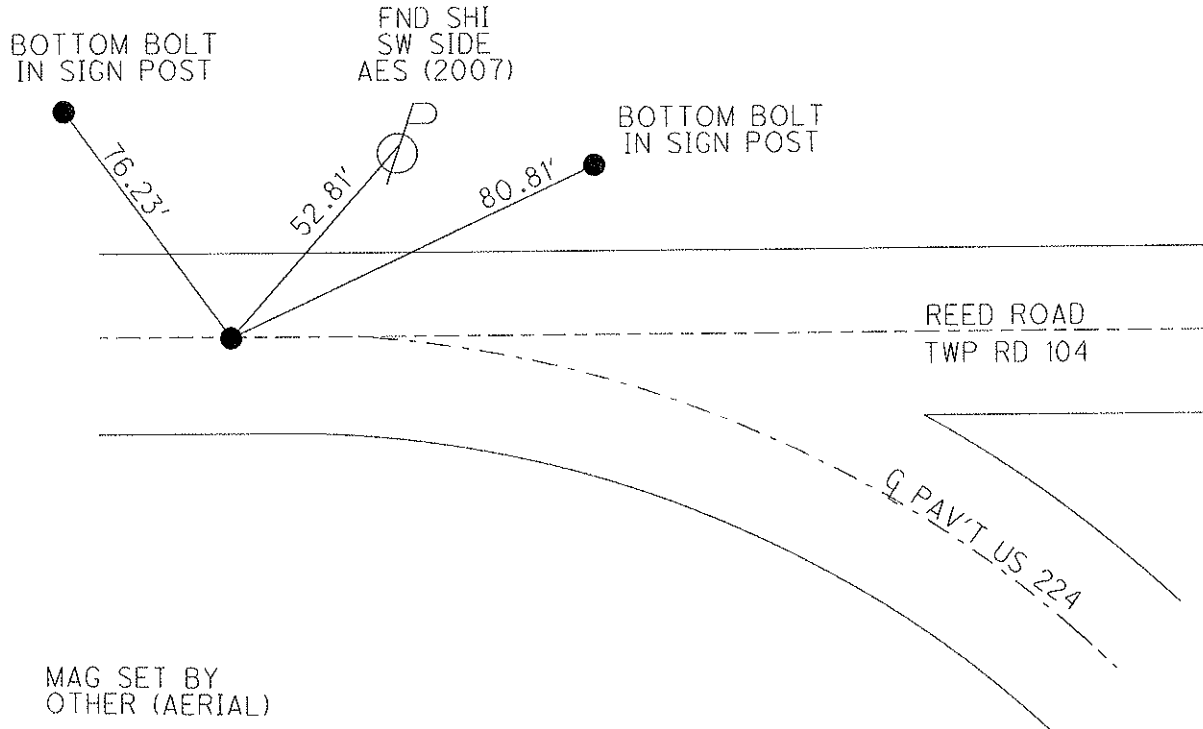
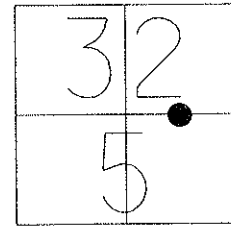
ON SURFACE - ~~BELOW~~ ON

LEFT - Q PAV'T - RIGHT ON

10.4' TO RT EDGE PAVEMENT

S.L.M. 1398+01.86

Grid: Northing: 515533.164 Easting: 1850268.923



MAG SET BY
OTHER (AERIAL)

SET MAG/WASHER
8/5/09 MB

RESET MAG/WASHER
10/15/09 KPM