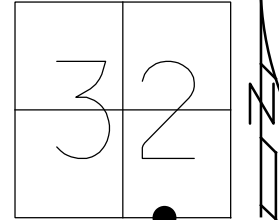


O.D.O.T. DISTRICT 2 SURVEY OFFICE (USE ONLY)

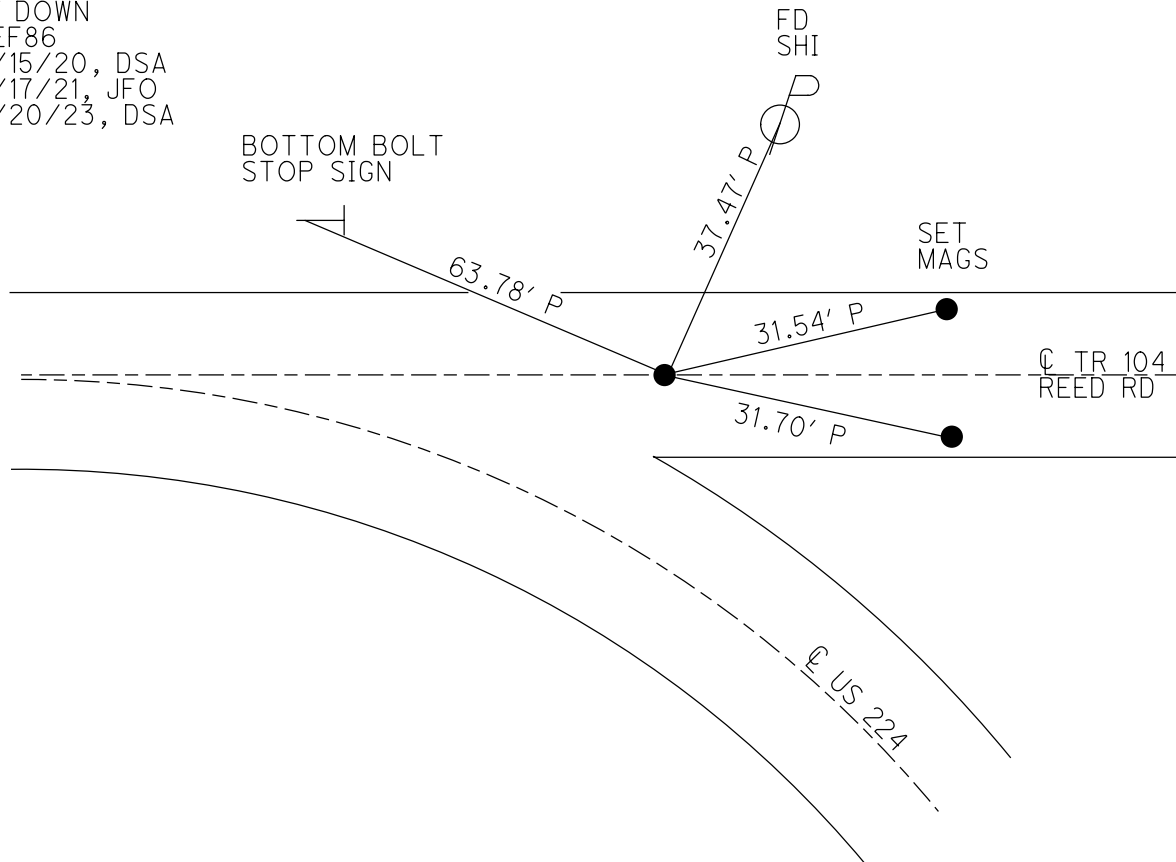
PERSONNEL _____ REFERENCE NO. 86 SHEET 34 OF 37
 NOTES RHOADES DATE 6/20/23 ROUTE US 224
 H.C. AUBLE WEATHER WINDY COUNTY SENECA
 R.C. RHOADES TEMP. 44° TOWNSHIP REED
 _____ SECTION 32
 DWG BY RHOADES PID 101217 T 2 N R 17 E

TYPE MONUMENT R.R.SPIKE
~~ON SURFACE~~ - BELOW 6"
 OFFSET C PAVEMENT 36' ± LT : ~~RT~~
25' TO LT EDGE PAVEMENT
 STATION: 1398+01.8



HORIZ.DATUM: NAD83 2011 GEOID: NAVD88 2018
 GRID: NORTHING: 515540.382 EASTING: 1850479.040

RECORD: P.I.
 $\Delta = 27^\circ 47' \text{ RT}$
 STA.80+20.6
 STA.134+60
 FD R.R.SPIKE
 3" DOWN
 11/2/82
 FD R.R.SPIKE
 6" DOWN
 REF86
 9/15/20, DSA
 3/17/21, JFO
 6/20/23, DSA



O.D.O.T. DISTRICT 2 SURVEY OFFICE (USE ONLY)

PERSONNEL

REFERENCE NO. 86

SHEET 30 OF 33

NOTES RHOADES

DATE 3/17/21

ROUTE US 224

H.C. O'DONNELL

WEATHER FAIR

COUNTY SENECA

R.C. _____

TEMP. 50°

TOWNSHIP REED

DWG BY NIESE PID PAVE TRAIN

SECTION 32

T 2 N R 17 E

TYPE MONUMENT R.R.SPIKE

~~ON SURFACE~~ - BELOW 6"

OFFSET C PAVEMENT 36' ± LT : ~~RT~~
25' TO LT EDGE PAVEMENT

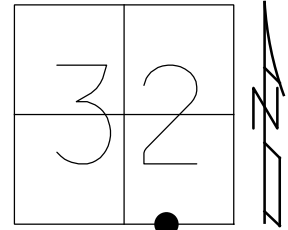
STATION: 1398+01.8

HORIZ.DATUM: NAD83 2011

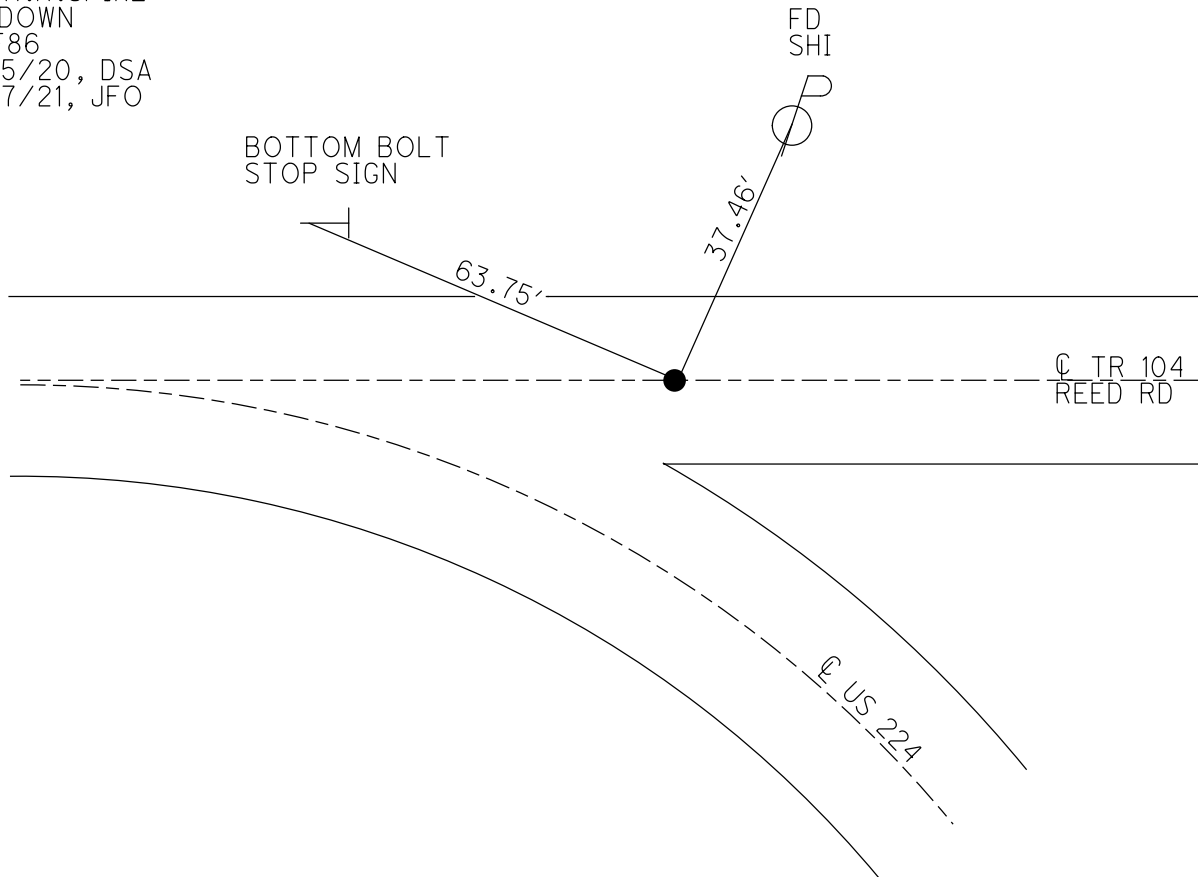
GEOID: NAVD88 2012A

GRID: NORTHING: 515542.156

EASTING: 1850414.258



RECORD: P.I.
 $\Delta = 27^\circ 47' \text{ RT}$
 STA.80+20.6
 STA.134+60
 FD R.R.SPIKE
 3" DOWN
 11/2/82
 FD R.R.SPIKE
 6" DOWN
 REF86
 9/15/20, DSA
 3/17/21, JFO



O.D.O.T. DISTRICT 2 SURVEY OFFICE

PERSONNEL

REFERENCE NO. 86

SHEET 29 OF 35

NOTES HARBAUGH

DATE 1/7/11

ROUTE U.S. 224

H.C. HARBAUGH

WEATHER CLOUDY

COUNTY SENECA

R.C. FINTEL

TEMP. 22°

TOWNSHIP REED

SECTION 32&5

T 2 N R 17 E

TYPE MONUMENT R.R. SPIKE

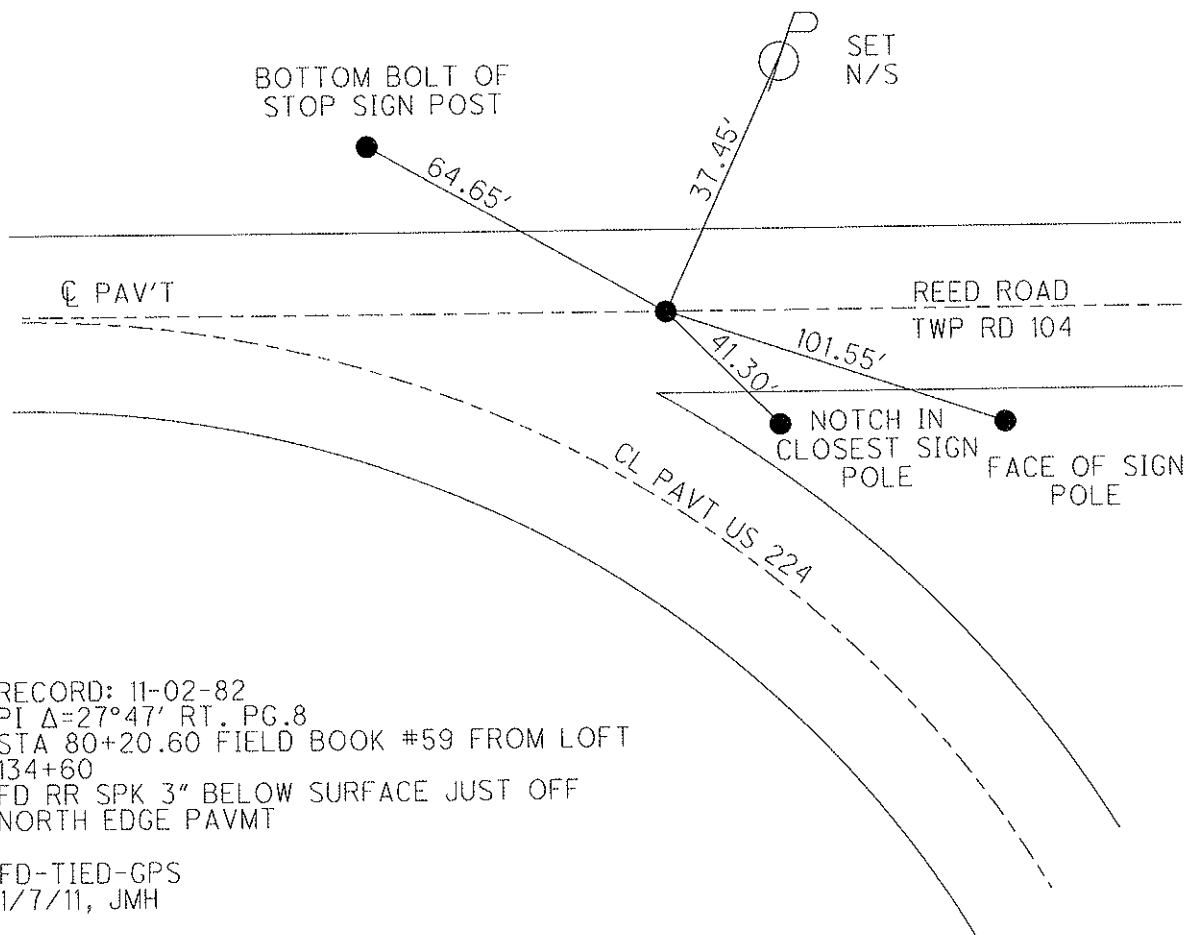
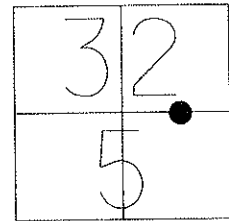
~~ON SURFACE~~ - BELOW 6"

LEFT - CL PAV'T - RIGHT

25' TO LT. EDGE PAVEMENT

S.L.M. 1398+01.80

Grid: Northing: 515542.156 Easting: 1850414.258



RECORD: 11-02-82
 PI Δ=27°47' RT. PG.8
 STA 80+20.60 FIELD BOOK #59 FROM LOFT
 134+60
 FD RR SPK 3" BELOW SURFACE JUST OFF
 NORTH EDGE PAVMT

FD-TIED-GPS
 1/7/11, JMH

O.D.O.T. DISTRICT 2 SURVEY OFFICE

PERSONNEL

REFERENCE NO. 85 & 86 SHEET 25 OF 32

NOTES Cheney
 H.C. Ripple
 R.C. BARBOUR
Geyman

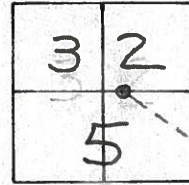
DATE 12-07-92
 WEATHER Cloudy
 TEMP. 32°

ROUTE US. 224
 COUNTY Seneca
 TOWNSHIP Reed
 SECTION 32 & 5
T. 2 N R. 17 E

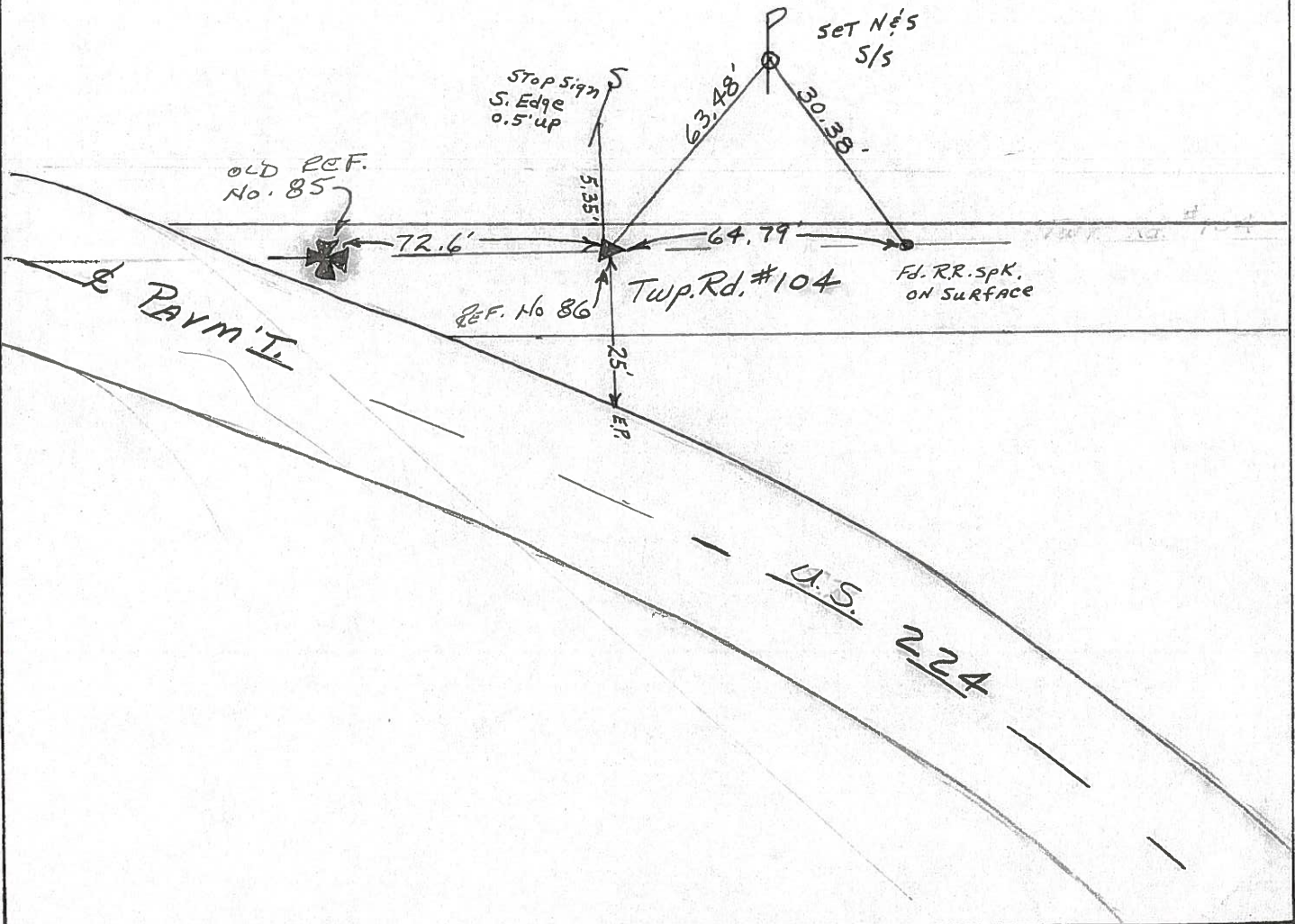
TYPE MONUMENT Fd. RR. Spk 3" below surface
~~ON SURFACE~~ - BELOW yes
~~LEFT - PAV'T. - RIGHT~~
25' TO LT. EDGE PAVEMENT
 S.L.M. 1398700 ±

J.L.R

86



Record: 11-02-82
 P.I. Δ = 27° 47' RT. PG. 8
 STA. 80+20.60 Field Book #59 (from Left)
 134+60
 Fd. RR. Spk. 3" below surface just off
 North Edge PAVM'T.



County Seneca S.R. 224

Date 11/02/82 Drawn 11/05/82

Township Leed & Venice

Weather sunny - windy

Section 32 & 5

Temp. 65°

T² N, R¹⁷ E

Personnel Cronin

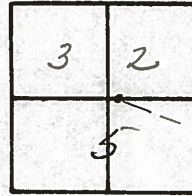
Ripple

Geyman

Messer

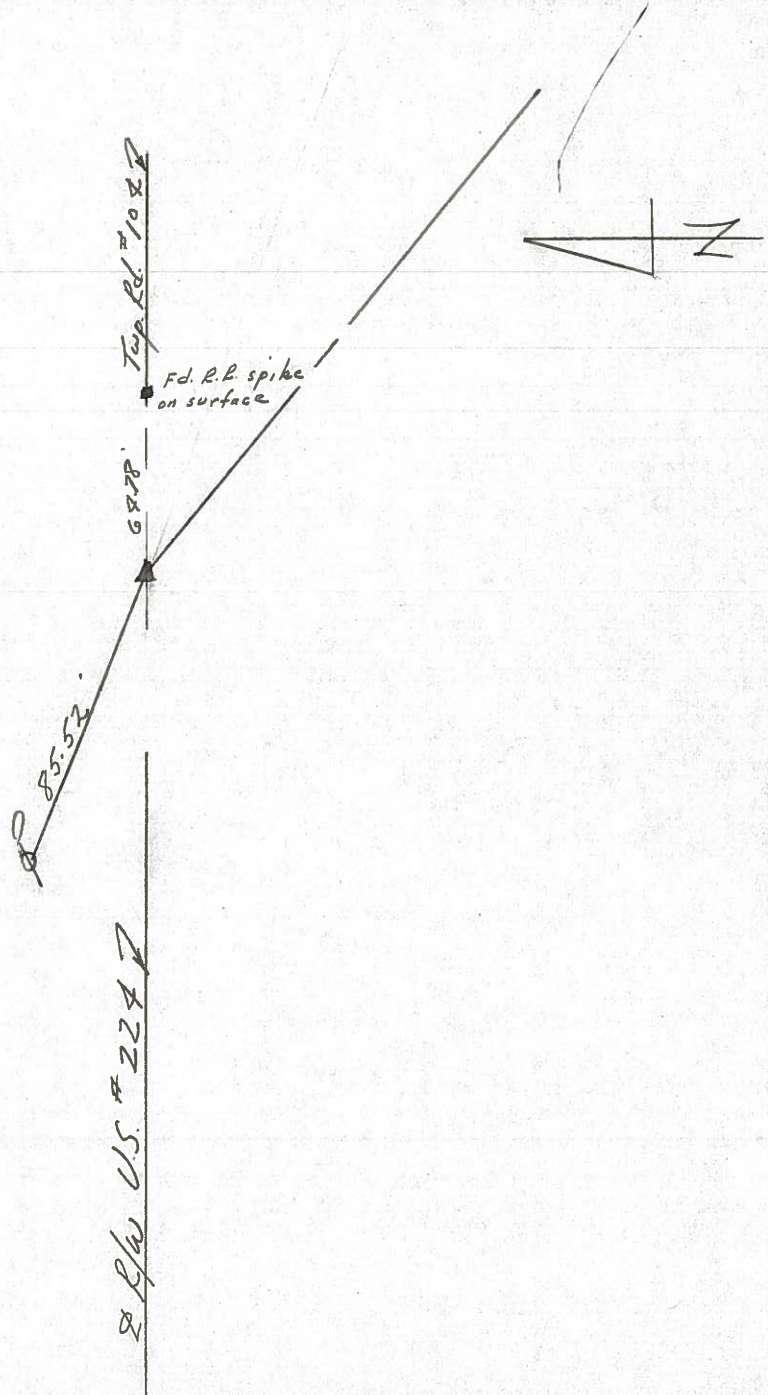
Barbour

86



P.I. - $\Delta = 27^{\circ} 47'$
 $\frac{80 + 20.60 - \text{FIELD Bk. } * 59, 13.8 \text{ from left}}{134 + 20.60}$

Fd. R.R. spike 3" below
 surface - just off north
 edge of pavement

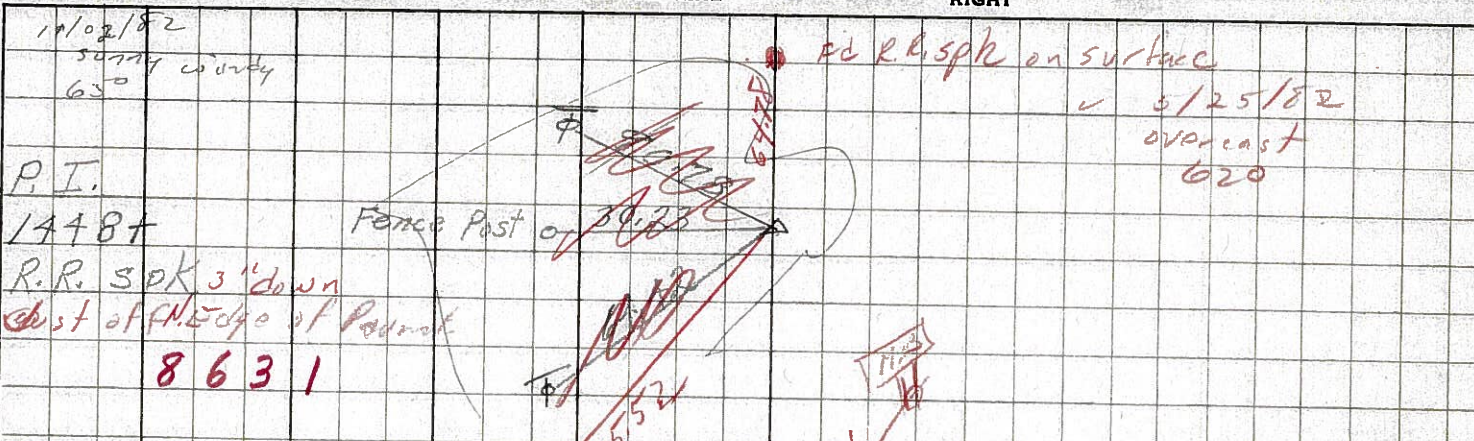


PERSONNEL TITLE PERSONNEL TITLE
Schneider _____
Mosser _____
Barbour _____
Potts _____

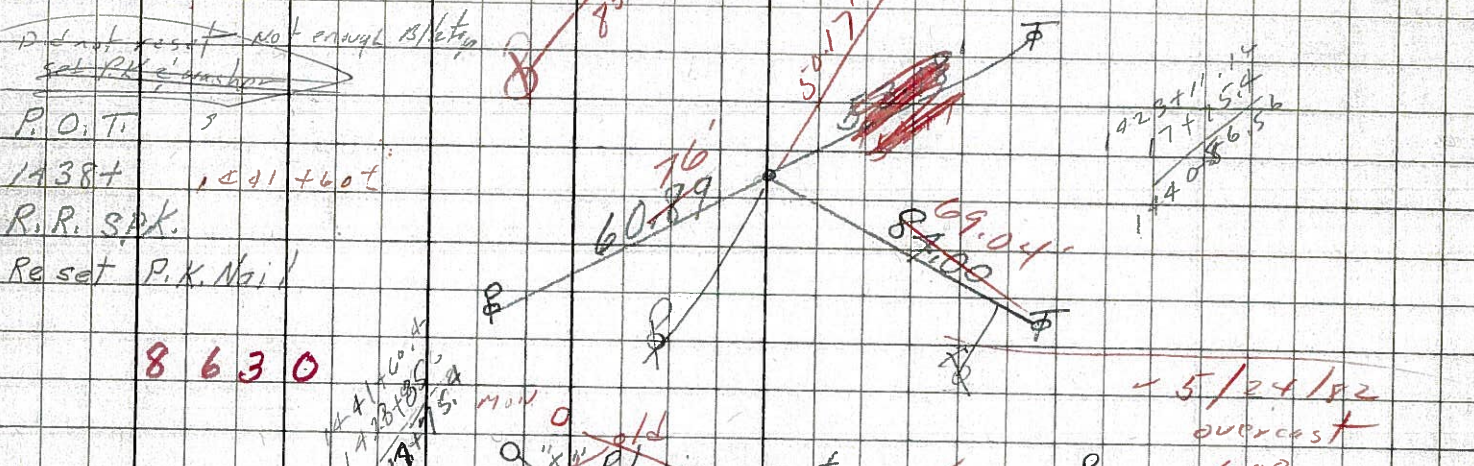
COUNTY Seneca DATE
S. R. U.S. # 224 WEATHER Fair
SEC. S.R. # 100 to Attica TEMP. 50°

DESCRIPTION Ties for control points
LEFT CENTER LINE RIGHT JOB NO.

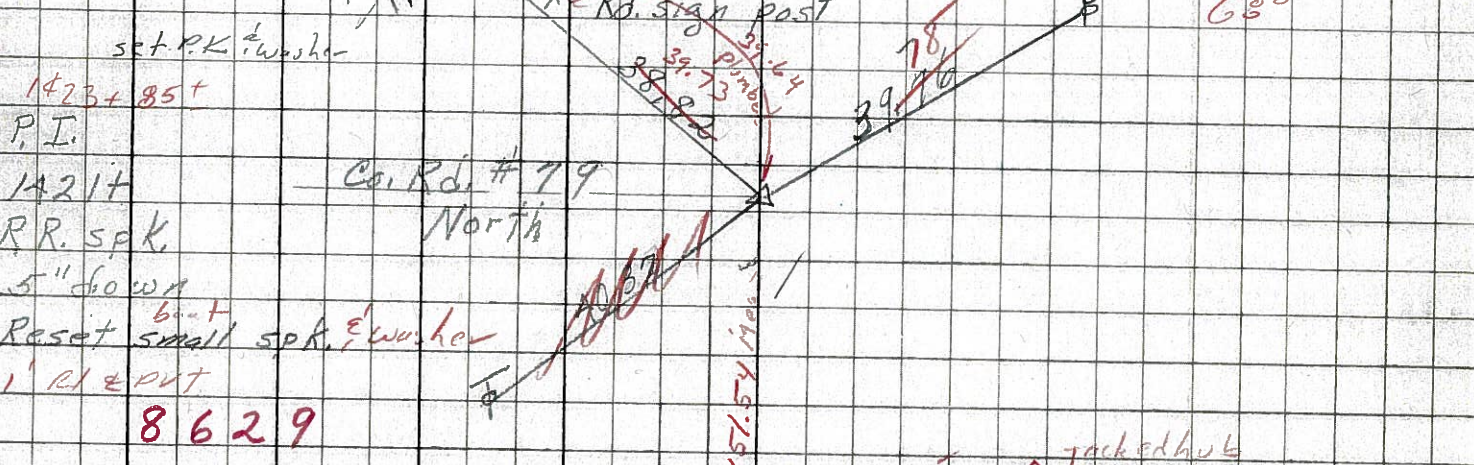
86



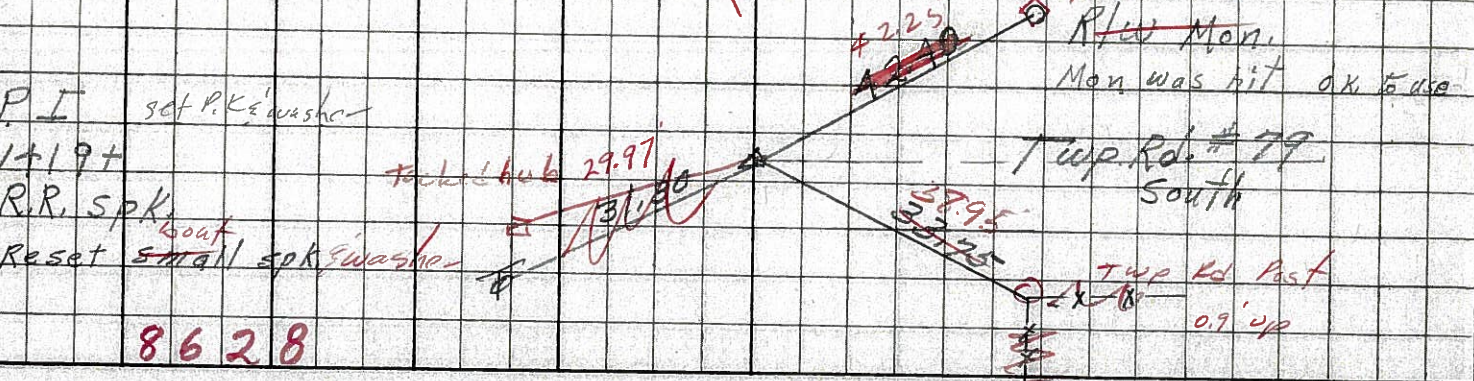
84



83-A



83



PERSONNEL TITLE PERSONNEL TITLE

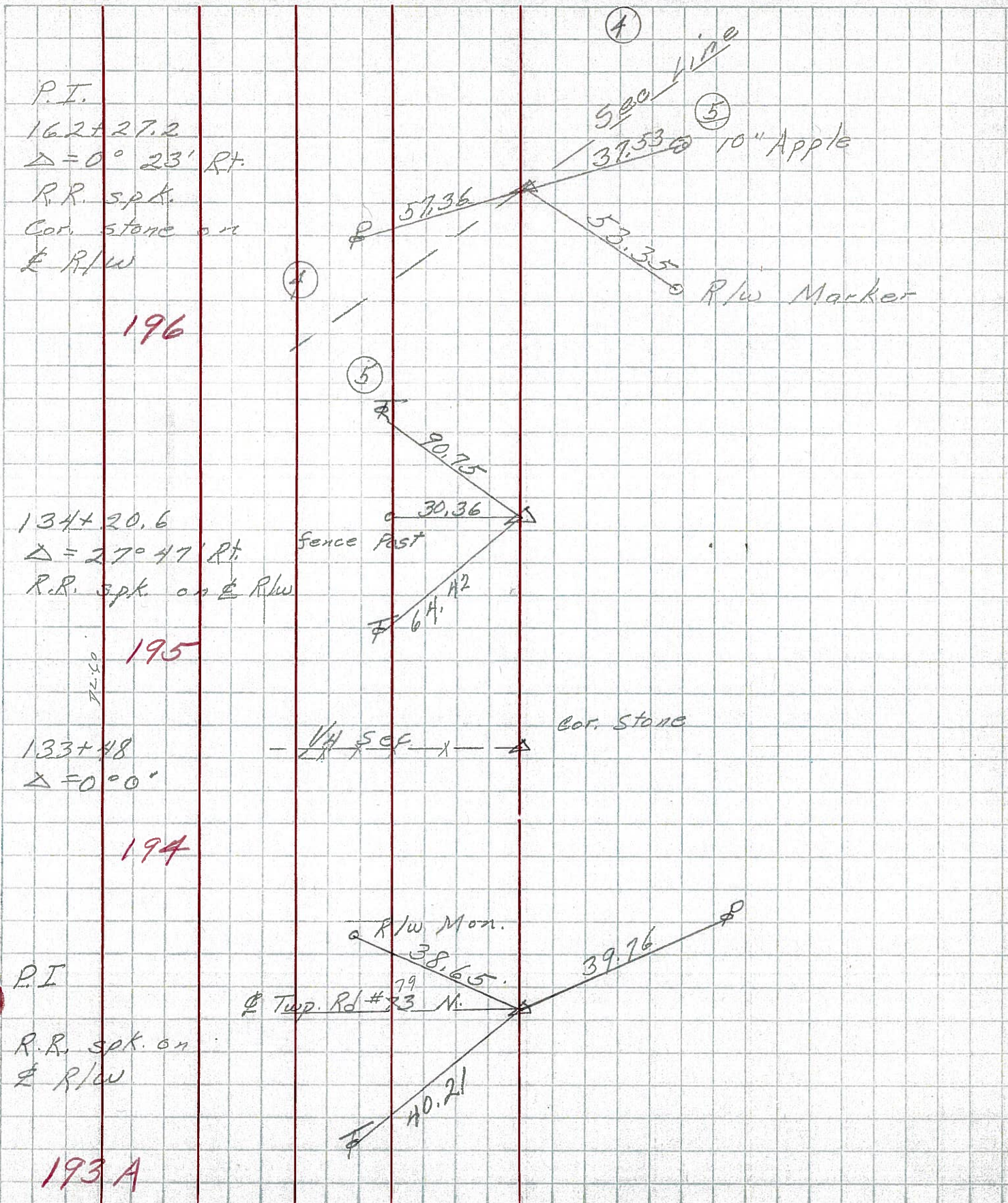
COUNTY Seneca DATE 1-12-6

S. R. U.S. # 224 WEATHER

SEC TEMP

DESCRIPTION S.R. # 19 - A Hica JOB NO.

LEFT CENTER LINE RIGHT



86

83-A

PERSONNEL TITLE PERSONNEL TITLE

COUNTY Seneca DATE _____

Ken Bill
Kowaleski
Brooks

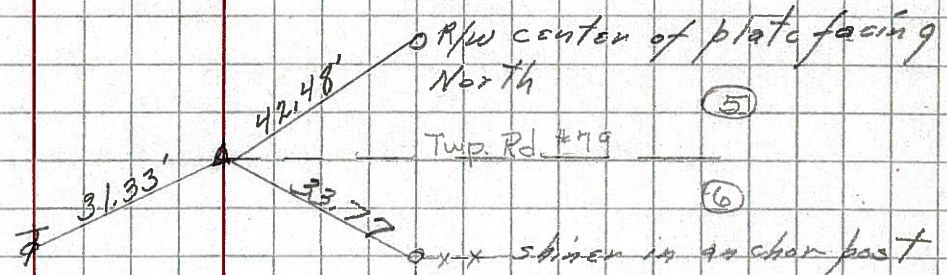
S. R. 224 WEATHER _____

SEC. _____ TEMP. _____

DESCRIPTION LEFT CENTER LINE RIGHT JOB NO.

old sta 105+41.7 **(93)** #193
P.I. $\Delta=0^{\circ}-04' RT$
R.R. spike

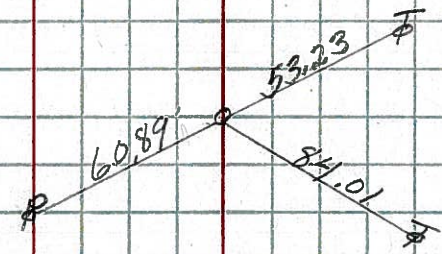
X



1-7-64

(84)

1440+72.20 193A
P.O.T.
R.R. spike



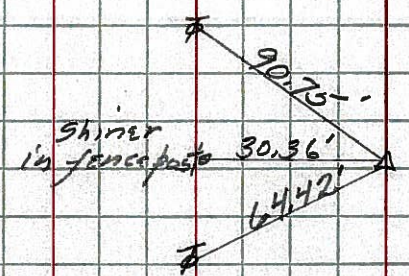
1-7-64

~~(84)~~ X

old sta 133+48 #194
 $\Delta=0^{\circ}-00'$
Cor. stone



old sta 134+20.6 **(86)** #195
P.I. $\Delta=27^{\circ}-47' RT$
R.R. spike



1-7-64

P.I. = sta 134+20.6
 $\Delta = 27^{\circ}-47' RT$
 $D = 5^{\circ}-00'$
 $T = 289.32'$
 $R = 1146.26'$
 $L = 555.67'$

PERSONNEL TITLE PERSONNEL TITLE

COUNTY Seneca DATE 10-11-49

S. R. #224 WEATHER

SEC. G-D-F-E TEMP.

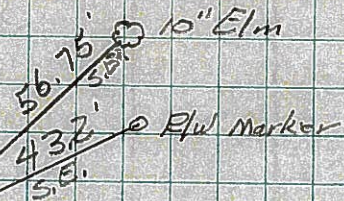
DESCRIPTION S.H. #272

LEFT CENTER LINE RIGHT JOB NO.



Sta. 54+00
Same ties as sta 53+49.9
Sec. D.

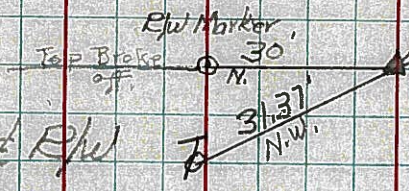
#192



83

Sta. 105+41.7
 $\Delta = 0^\circ - 04' \text{ Rt.}$
R.R. Spike on $\frac{1}{2}$ R/W
6-26-59
8-10-59
Reset

#193



Sta. 133+48
Cor. Stone.

#194

86

Sta. 134+20.6
 $\Delta = 27^\circ - 47' \text{ Rt.}$
RE =

#195

Sta. 162+27.2
 $\Delta = 0^\circ - 23' \text{ Rt.}$
R.R. Spike set over
Cor. Stone on $\frac{1}{2}$ R/W
6-26-59
Reset 8-10-59

#196

