

O.D.O.T. DISTRICT 2 SURVEY OFFICE

PERSONNEL

REFERENCE NO. 87

SHEET 26 OF 32

NOTES Cheney

H.C. RIPPLE

R.C. BARBOUR

Geyman

DATE 7-01-92

WEATHER Cloudy

TEMP. 65°

ROUTE U.S. 224

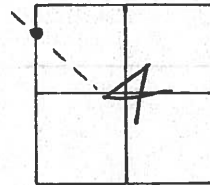
COUNTY Seneca

TOWNSHIP Venice

SECTION 4

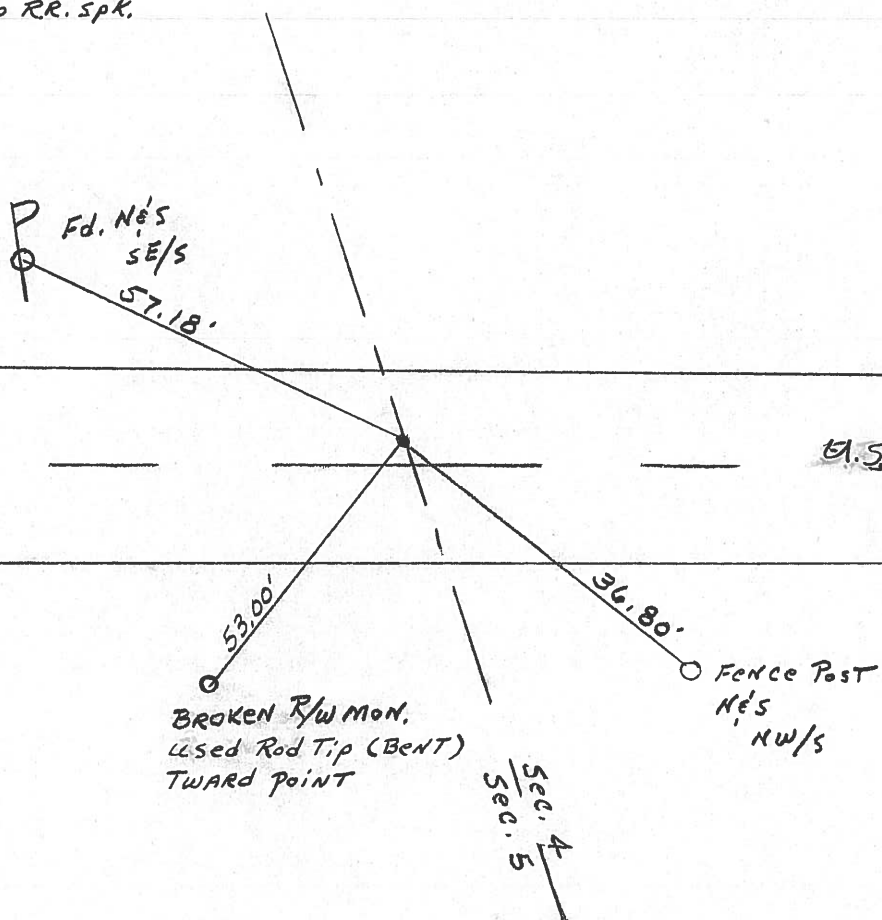
T L N R I T E

TYPE MONUMENT Fd PK & Washer ⁷⁻⁰¹⁻⁹² Reset PK & Washer ¹²⁻⁰⁷⁻⁹²
 ON SURFACE - BELOW yes J.L.R.
 LEFT- & PAVM'T. - RIGHT 2.5'
7.5 TO LT. EDGE PAVEMENT
 S.L.M. 1426+06



Record: 11-02-92

P.I. STA. 108+27.2 (Field Book #59)
 Pg. 8 FROM LOFT SET PK, & WASHER
 ATOP PK & WASHER ATOP RR. SPK.
 2' ± LT. & OF PAVM'T.



& PAVM'T.

U.S. 224

BROKEN R/W MON.
 Used Rod Tip (BENT)
 TWARD POINT

Sec. 4
 Sec. 5

Fence Post
 N's
 NW/S

County Seneca S.R. # 224

Township Venice

Section # 4

T/LN, R/E

Personnel Cronin

Rippe

Geyman

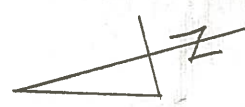
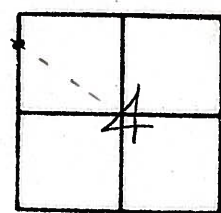
Barbour

81

Date 11/02/82 Drawn 1/25/83

Weather sunny-windy

Temp. 65°



P.I.
108+27.2 (Field Bk #59
q. 8 from left.) set P.K. 4'
washer a top P.K. 4' washer
a top R.R. spike - 2' + Lt. of &
pavement.

