

O.D.O.T. DISTRICT 2 SURVEY OFFICE (USE ONLY)

PERSONNEL

REFERENCE NO. 87 C

SHEET 36 OF 37

NOTES RHOADES

DATE 11/9/23

ROUTE US 224

H.C. AUBLE

WEATHER CLOUDY

COUNTY SENECA

R.C. ASTON

TEMP. 48°

TOWNSHIP VENICE

NIESE

SECTION 4

DWG BY RHOADES

PID 101217

T 1 N R 17 E

TYPE MONUMENT MAG/WASHER

ON SURFACE - ~~BELOW~~ ON

OFFSET Q PAVEMENT ON LT : RT

10.2' TO RT EDGE PAVEMENT

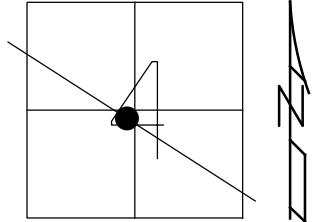
STATION: 1456+47.01

HORZ.DATUM: NAD83 2011

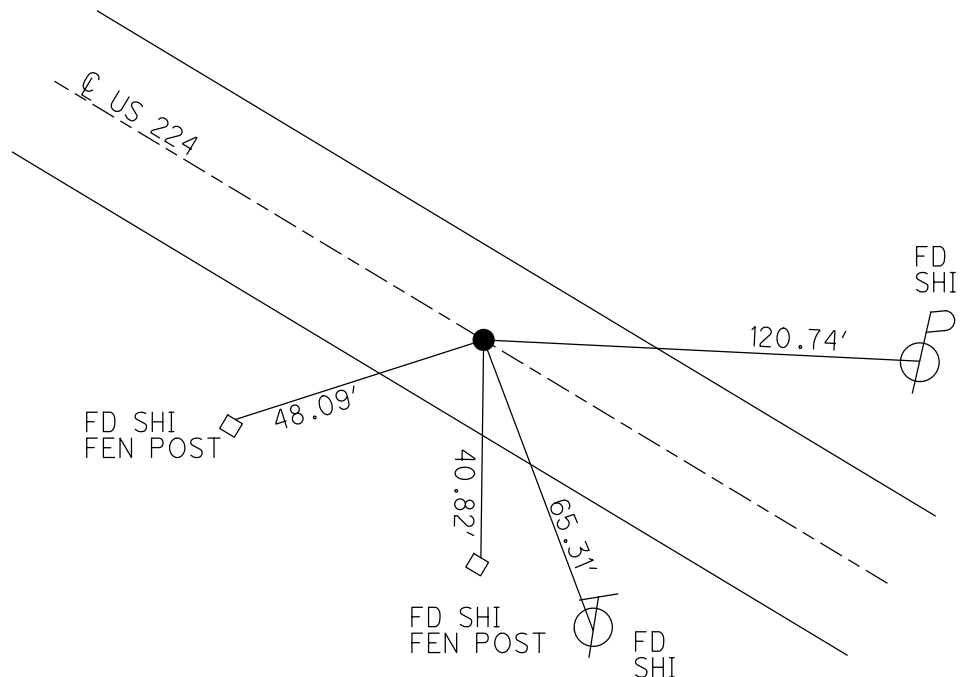
GEOID: NAVD88 2018

GRID: NORTHING: 512750.092

EASTING: 1855549.524



RECORD: P.I.  
 STA.138+67.8  
 FD BOAT SPIKE/WASHER  
 ATOP R.R.SPIKE  
 1' DOWN  
 SET P.K./WASHER  
 11/2/82  
 FD P.K./WASHER  
 7/1/92  
 SET P.K./WASHER  
 12/7/92, JLR  
 FD P.K./WASHER  
 5/6/08  
 SET MAG/WASHER  
 8/5/09, MB  
 10/15/09, KPM  
 FD MAG/WASHER  
 REFC87  
 9/15/20, DSA  
 3/17/21, JFO  
 SET MAG/WASHER  
 11/9/23, DSA



O.D.O.T. DISTRICT 2 SURVEY OFFICE (USE ONLY)

PERSONNEL

REFERENCE NO. 87 C

SHEET 32 OF 33

NOTES RHOADES DATE 3/17/21  
 H.C. O'DONNELL WEATHER FAIR  
 R.C. \_\_\_\_\_ TEMP. 50°

ROUTE US 224  
 COUNTY SENECA  
 TOWNSHIP VENICE  
 SECTION 4

DWG BY NIESE PID PAVE TRAIN

T 1 N R 17 E

TYPE MONUMENT MAG/WASHER

ON SURFACE - ~~BELOW~~ ON

OFFSET ☉ PAVEMENT ON LT : RT

10.2' TO RT EDGE PAVEMENT

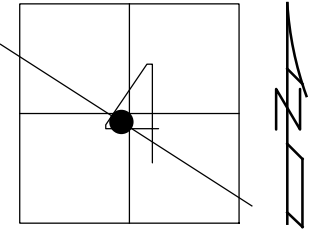
STATION: 1456+47.01

HORZ.DATUM: NAD83 2011

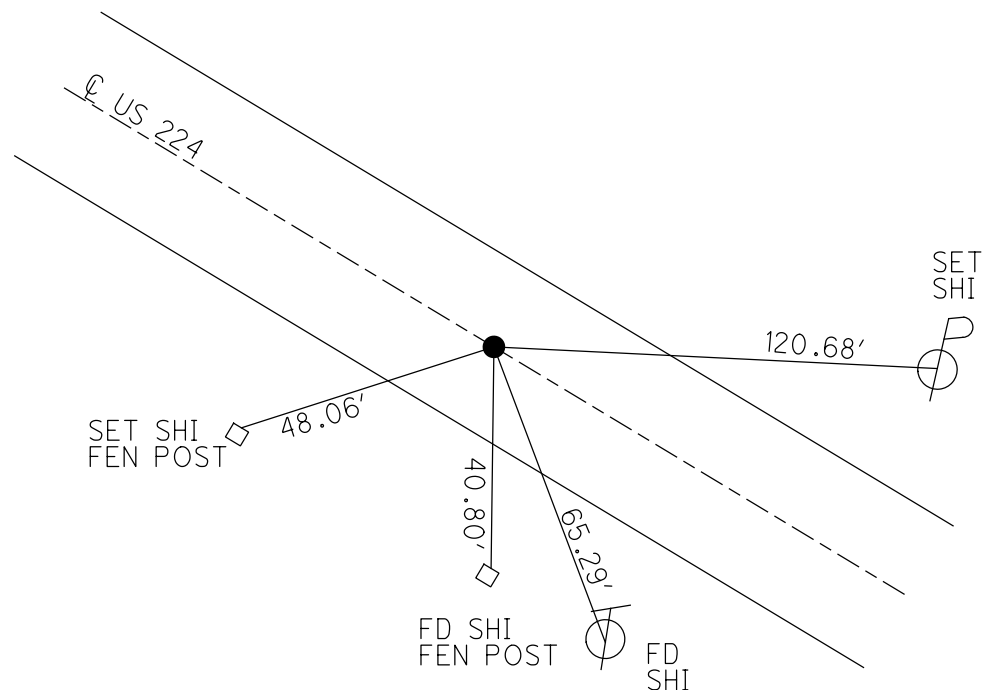
GEOID: NAVD88 2012A

GRID: NORTHING: 512750.155

EASTING: 1855549.480



RECORD: P.I.  
 STA.138+67.8  
 FD BOAT SPIKE/WASHER  
 ATOP R.R.SPIKE  
 1' DOWN  
 SET P.K./WASHER  
 11/2/82  
 FD P.K./WASHER  
 7/1/92  
 SET P.K./WASHER  
 12/7/92, JLR  
 FD P.K./WASHER  
 5/6/08  
 SET MAG/WASHER  
 8/5/09, MB  
 10/15/09, KPM  
 FD MAG/WASHER  
 REFC87  
 9/15/20, DSA  
 3/17/21, JFO



O.D.O.T. DISTRICT 2 SURVEY OFFICE (USE ONLY)

PERSONNEL

REFERENCE NO. 87 C

SHEET 31 OF 35

NOTES Moser

DATE 8-5-09

ROUTE U.S. 224

H.C. Moser

WEATHER Fair

COUNTY SENECA

R.C. Pietkowski

TEMP. +40°

TOWNSHIP VENICE

Goldberg

SECTION 4

T 1 N R 17 E

TYPE MONUMENT P.K./WASHER

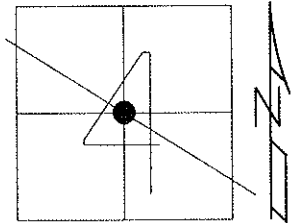
ON SURFACE - ~~BELOW~~ ON

LEFT - ☉ PAV'T - RIGHT ON

10.2' TO RT. EDGE PAVEMENT

S.L.M. 1456+47.01

Grid: Northing: 512750.155 Easting: 1855549.480



RECORD: 11-02-82  
 PI STA. 138+67.8  
 FIELD BOOK #59  
 PG 9 FROM LOFT  
 SET PK&WASHER  
 ATOP BOAT SPK&  
 WASHER ATOP RR  
 SPK 1' + LT ☉ PAV'T.

NOTE: THERE IS  
 A VERY STRONG  
 MAGNETIC PULL ON  
 N-S 1/2 SEC. LLINE  
 ABOUT 2' + LT ☉ PAV'T  
 DID NOT DIG

LOOKED ON 5-6-08  
 FOR MAGNETIC PULL.  
 COULD NOT LOCATE  
 K. MOSER

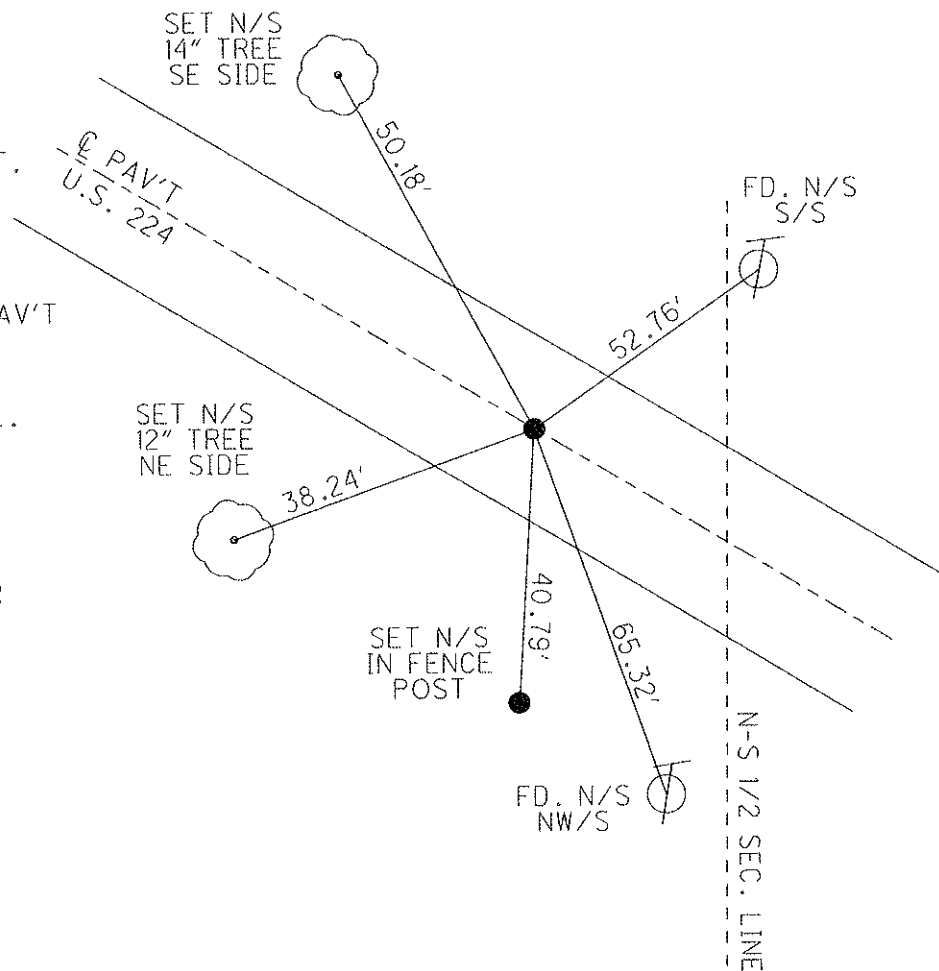
FD P.K./WASHER  
 7/1/92 JLR

RESET P.K./WASHER  
 12/7/92 JLR

FD P.K./WASHER  
 5/6/08

SET MAG/WASHER  
 8/5/09 MB  
 ALL POINTS TIED  
 WITH A 200' TAPE.

RESET MAG/WASHER  
 10/15/09 KPM



O.D.O.T. DISTRICT 2 SURVEY OFFICE

PERSONNEL

REFERENCE NO. 87-C

SHEET 29 OF 32

NOTES Cheney

H.C. RIPPLE

R.C. BARBOUR

Geyman

DATE 12-01-92

WEATHER Cloudy

TEMP. 65°

ROUTE U.S. 224

COUNTY Seneca

TOWNSHIP Venice

SECTION 4

T1 N R 17 E

7-1-92

TYPE MONUMENT Fd. PK & WASHER

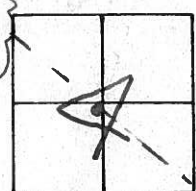
*Reset PK & WASHER  
12-07-92  
J.C.E.*

ON SURFACE - BELOW yes

LEFT - ☉ PAV'T. - RIGHT yes

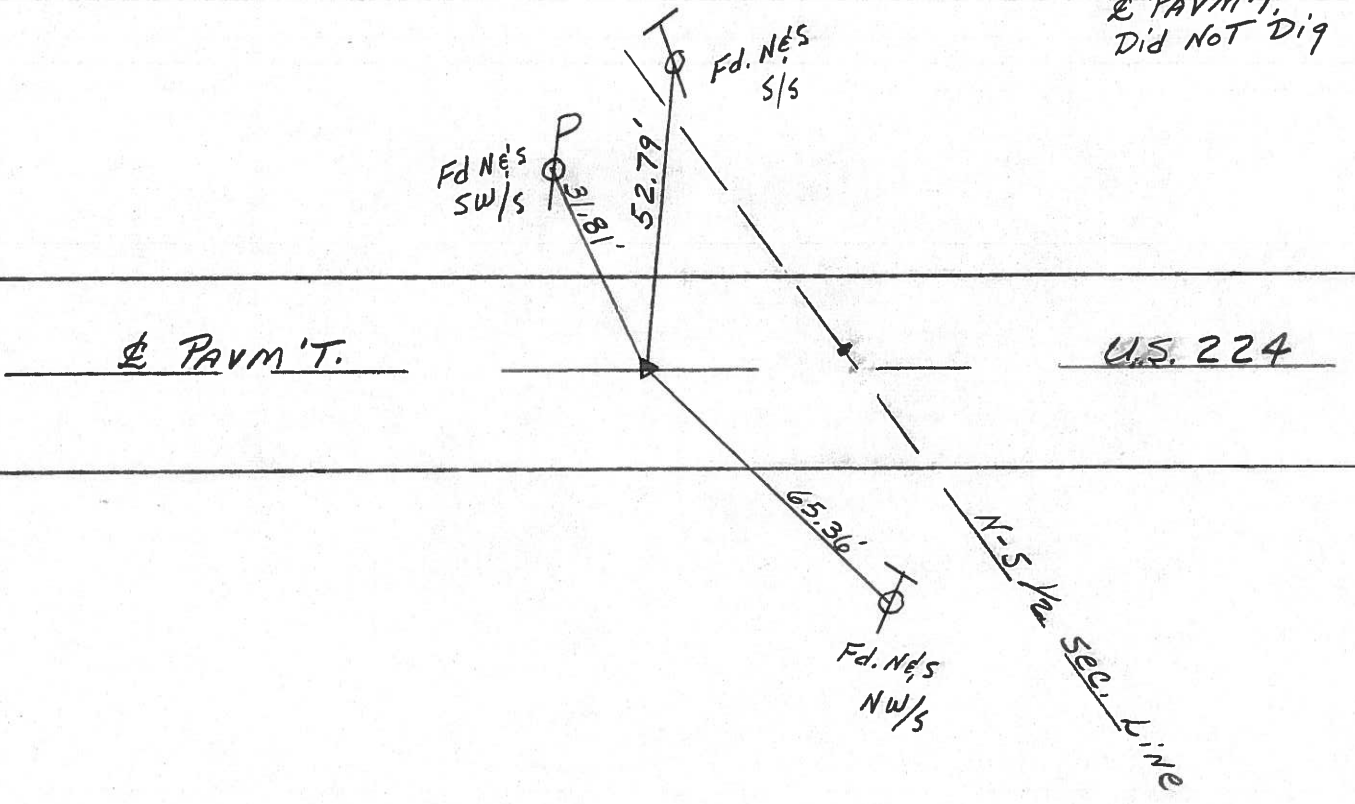
10 TO RT. EDGE PAVEMENT

S.L.M. 1455 + 99



Record: 11-02-82  
 P.I. STA. 138+67.8 Field Book #59  
 Pg 9 FROM LEFT SET P.K. & WASHER  
 ATOP BOAT SPK & WASHER ATOP  
 RR SPK 1'± LT. & PAVM'T.

NOTE: There is  
 A VERY STRONG  
 MAGNETIC pull on  
 N-5 1/2 sec. Line  
 ABOUT 2'± LT.  
 ☉ PAVM'T.  
 Did NOT Dig



County Seneca S.R. # 224

Township Venice

Section 4

T/L, R/E

Personnel Cronin

Ripple

Geuman

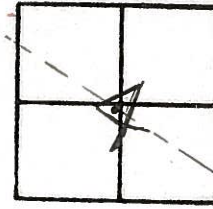
Barbour

87-6

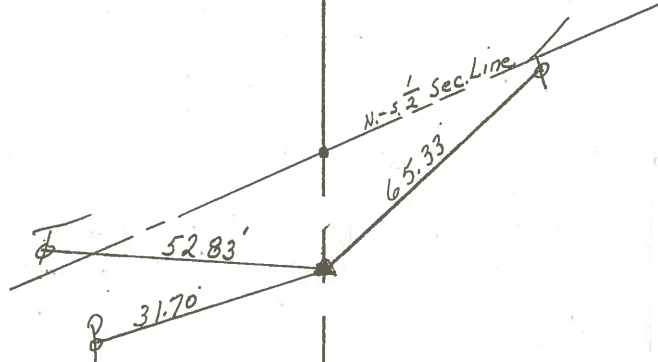
Date 11/02/82 Drawn 1/25/83

Weather sunny - windy

Temp. 65°



P.I.  
38+67.8 - Field Bk. #59 P. 9. from lott  
set P.K. & washer at top bout  
spike & washer at top R.L.  
spike - 1 ± Lt. & pavement

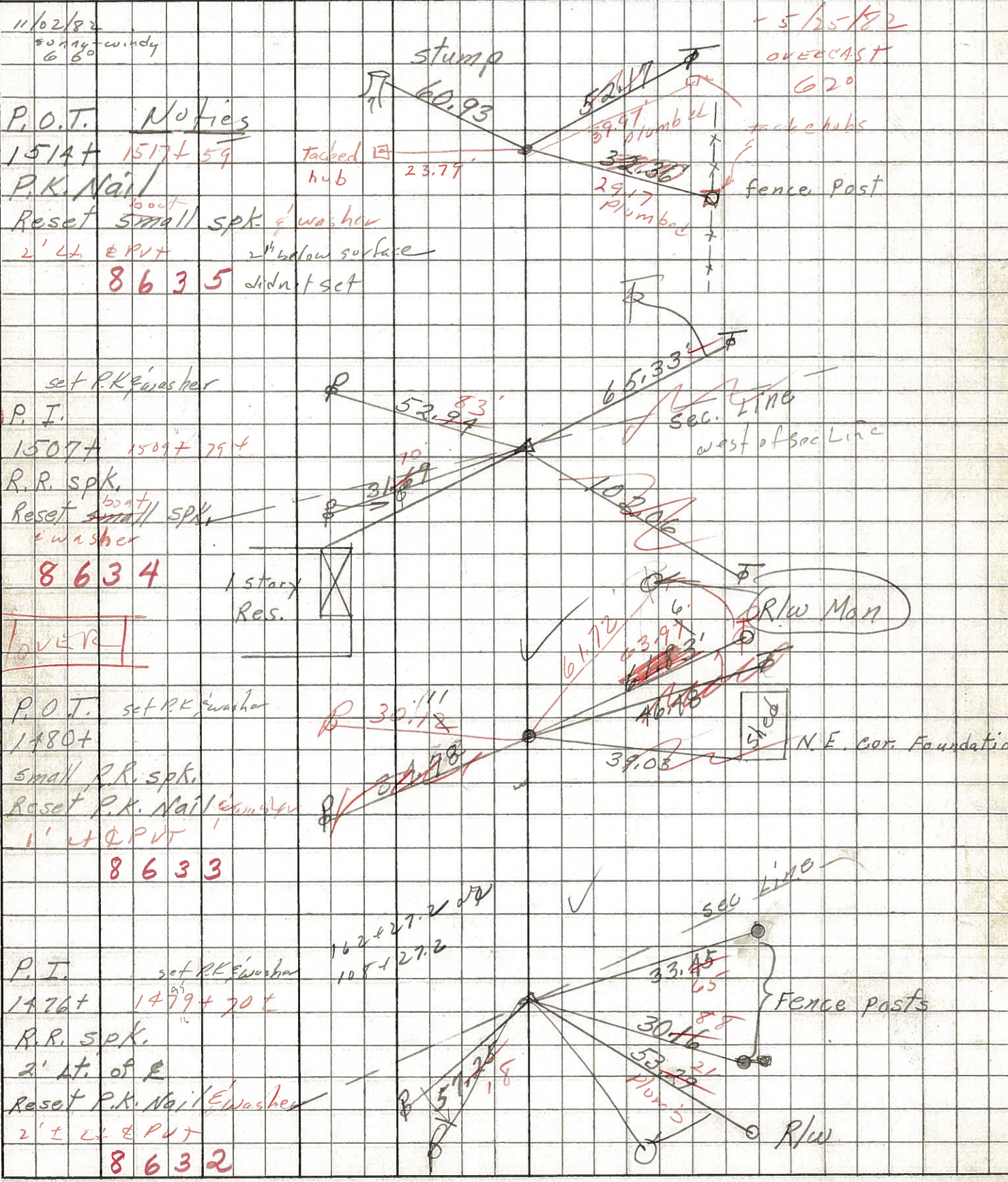


There is a strong magnetic  
pull on N-S 1/2 Sec. Line  
about 2 ± Lt. & pavement  
Did not dig because of  
resurfacing

R/W U.S. #224

PERSONNEL TITLE PERSONNEL TITLE COUNTY Seneca DATE 1-2-68  
 U.S. # 224 WEATHER Fair  
 SEC. SR. #100 to Attica TEMP. 50°

DESCRIPTION Ties for Control Points JOB NO.



87-C

11/02/82  
 50-100-100 windy  
 6 60  
 P.O.T. Notices  
 1514+ 1517+ 59  
 P.K. Nail  
 Reset <sup>boot</sup> small spk. & washer  
 2' Lt. & PVT 2" below surface  
 8635 didn't set

set P.K. washer  
 P.I.  
 1507+ 1509+ 79+  
 R.R. spk.  
 Reset <sup>boot</sup> small spk. & washer  
 8634

TOVER  
 P.O.T. set P.K. washer  
 1480+  
 Small P.R. spk.  
 Reset P.K. Nail & washer  
 1' Lt. & PVT  
 8633

P.I. set P.K. washer  
 1476+ 1479+ 70+  
 R.R. spk.  
 2' Lt. of E  
 Reset P.K. Nail & washer  
 2' Lt. & PVT  
 8632

5/25/82  
 OVERCAST  
 62°  
 tack hubs  
 fence post

sec. line  
 west of sec line

R/W Man  
 shed  
 N.E. Cor. Foundation

sec line  
 Fence posts  
 R/W

PERSONNEL TITLE PERSONNEL TITLE

COUNTY Seneca DATE 1-12-66

S. R. U.S. # 224 WEATHER

SEC. TEMP.

DESCRIPTION S.R. # 19 - Attica JOB NO.

LEFT

CENTER LINE

RIGHT

85-AA

222 + 70.4  
 $\Delta = 0^\circ 21' \text{ Pt.}$   
R.R. spk on  $\&$  R/w

199

Twp Rd # 81  
North

R/w Mon.

30.34

48.87

14" Hickory

30.94

R/w Mon

25.00

24" Maple

41.35

22" Maple



87-E

207 + 71  
 $\Delta = 0^\circ 18' \text{ Lt}$   
R.R. spk on  $\&$  R/w

198

Br. Rail Post

29.05

18.98

Br. Rail Post

30.26

89-U

192 + 67.8  
 $\Delta = 0^\circ 16' \text{ Lt}$   
R.R. spk on  
 $\&$  R/w

197

Cor. foundation

65.33

Sec. line

Cluster of 4" Elms

90.56

31.70

R/w Mon.

102.6

64.78

PERSONNEL TITLE PERSONNEL TITLE

E. Krabill

COUNTY Seneca DATE

J. Kowalski

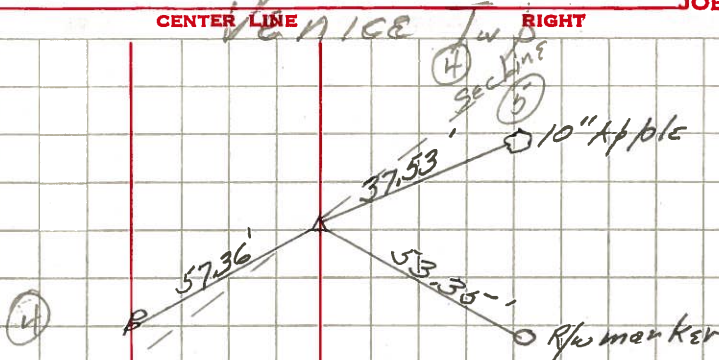
S. R. 224 WEATHER

D. Brooks

SEC. TEMP.

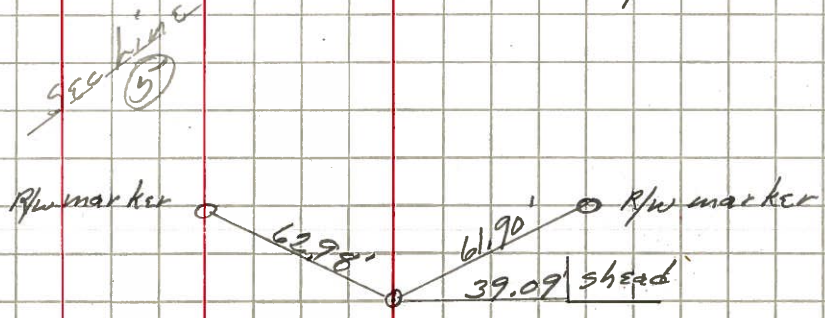
DESCRIPTION LEFT CENTER LINE RIGHT JOB NO.

old sta 162+22.2 #196  
P.I.  $\Delta=0^{\circ}-23'RT$   
R.R. spike  
Cor stone on E of R/W



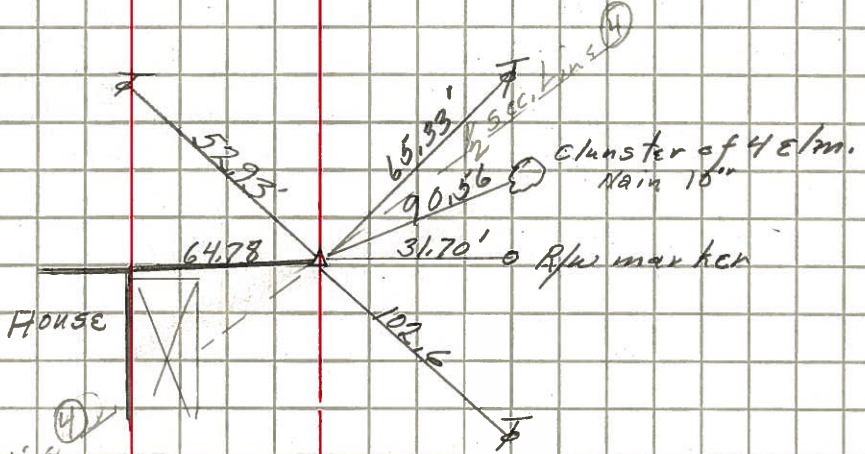
1-8-64

1462+45.2 #196A  
P.O.T.  
R.R. spike



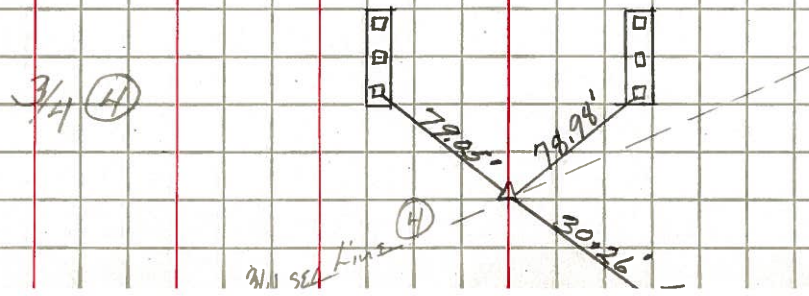
1-8-64

87-C  
old sta 192+67.8 #197  
P.I.  $\Delta=0^{\circ}-16'LT$   
R.R. spike



1-8-64

87-E  
old sta 207+71 #198  
P.I.  $\Delta=0^{\circ}-18'LT$   
R.R. spike



1-8-64



PERSONNEL TITLE PERSONNEL TITLE

COUNTY Seneca

DATE 10-11-49

S. R. #224

WEATHER

SEC. G-D-F-E

TEMP.

DESCRIPTION S.H. #272

JOB NO.

LEFT

CENTER LINE

RIGHT

87-C

207.71.0  
15+03.2

Sta. 192+67.8

$\Delta = 0^\circ - 16' Lt.$

R.R. Spike on  $\frac{1}{2}$  R/W

6-26-59

8-10-59 Reset #197

conc. Foundation

Br. Rail Post, coping off

Br. No.

Se. 224-

Br. Rail Post Coping off

90.7  
S.E.

31.7'  $\phi$  R/W Marker

Cluster of 4 Elm. Nail in 5" Next to Rd.

87-E

Sta. 207+71

$\Delta = 0^\circ - 18' Lt.$

R.R. Spike on  $\frac{1}{2}$  R/W

6-26-59

8-10-59 Reset #198

33.25  
N.E.

79.22  
N.E.

79.22  
S.E.

30.26  
S.W.

88-AA

Sta. 222+70.4

$\Delta = 0^\circ - 21' Rt.$

R.R. Spike on  $\frac{1}{2}$  R/W

6-26-59

8-10-59 Reset #199

48.87  
S.E.

25'  $\phi$  24" Maple

14" Hickory

41.35  
S.W.

22" Maple

88-A

Sta. 229+86

$\Delta = 0^\circ - 0'$

R.R. Spike on  $\frac{1}{2}$  R/W

6-26-59

Re-set #200  
8-10-59

24" Elm Walnut

37.4  
N.W.

38.48  
S.E.

30.62  
S.W.

12" Maple

12" Maple