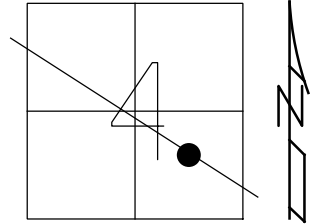


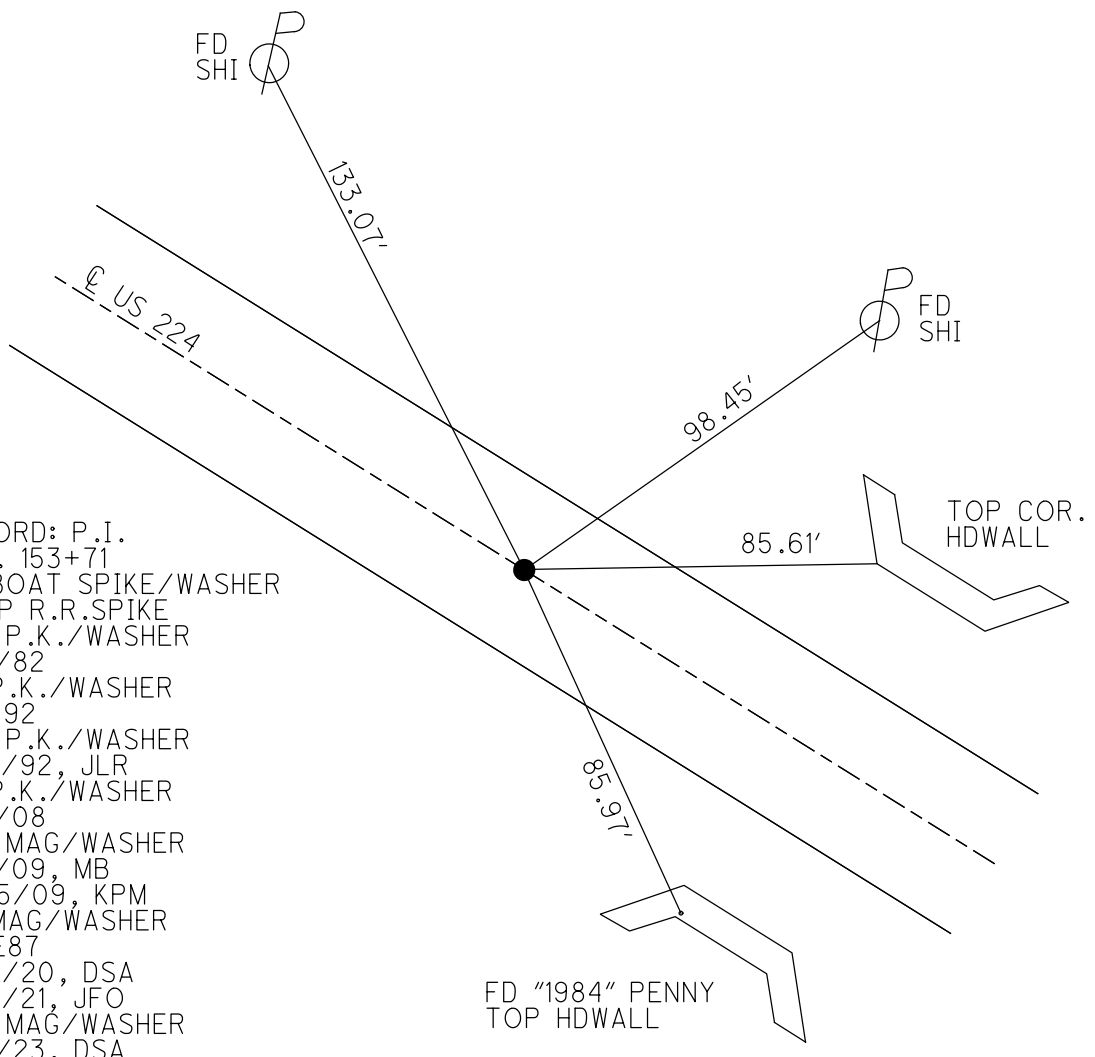
O.D.O.T. DISTRICT 2 SURVEY OFFICE (USE ONLY)

| | | |
|-----------------------|---------------------------|------------------------------|
| PERSONNEL | REFERENCE NO. <u>87 E</u> | SHEET <u>37</u> OF <u>37</u> |
| NOTES <u>RHOADES</u> | DATE <u>11/9/23</u> | ROUTE <u>US 224</u> |
| H.C. <u>AUBLE</u> | WEATHER <u>CLOUDY</u> | COUNTY <u>SENECA</u> |
| R.C. <u>ASTON</u> | TEMP. <u>48°</u> | TOWNSHIP <u>VENICE</u> |
| | | SECTION <u>4</u> |
| DWG BY <u>RHOADES</u> | PID <u>101217</u> | T <u>1</u> N R <u>17</u> E |

TYPE MONUMENT MAG/WASHER
 ON SURFACE - ~~BELOW~~ ON
 OFFSET ☉ PAVEMENT 1' ~~±~~ : RT
10.2' TO RT EDGE PAVEMENT
 STATION: 1471+50.41



HORZ. DATUM: NAD83 2011 GEOID: NAVD88 2018
 GRID: NORTHING: 512032.571 EASTING: 1856870.646



RECORD: P.I.
 STA. 153+71
 FD BOAT SPIKE/WASHER
 ATOP R.R. SPIKE
 SET P.K./WASHER
 11/2/82
 FD P.K./WASHER
 7/1/92
 SET P.K./WASHER
 12/7/92, JLR
 FD P.K./WASHER
 5/6/08
 SET MAG/WASHER
 8/5/09, MB
 10/15/09, KPM
 FD MAG/WASHER
 REFE87
 9/15/20, DSA
 3/17/21, JFO
 SET MAG/WASHER
 11/9/23, DSA

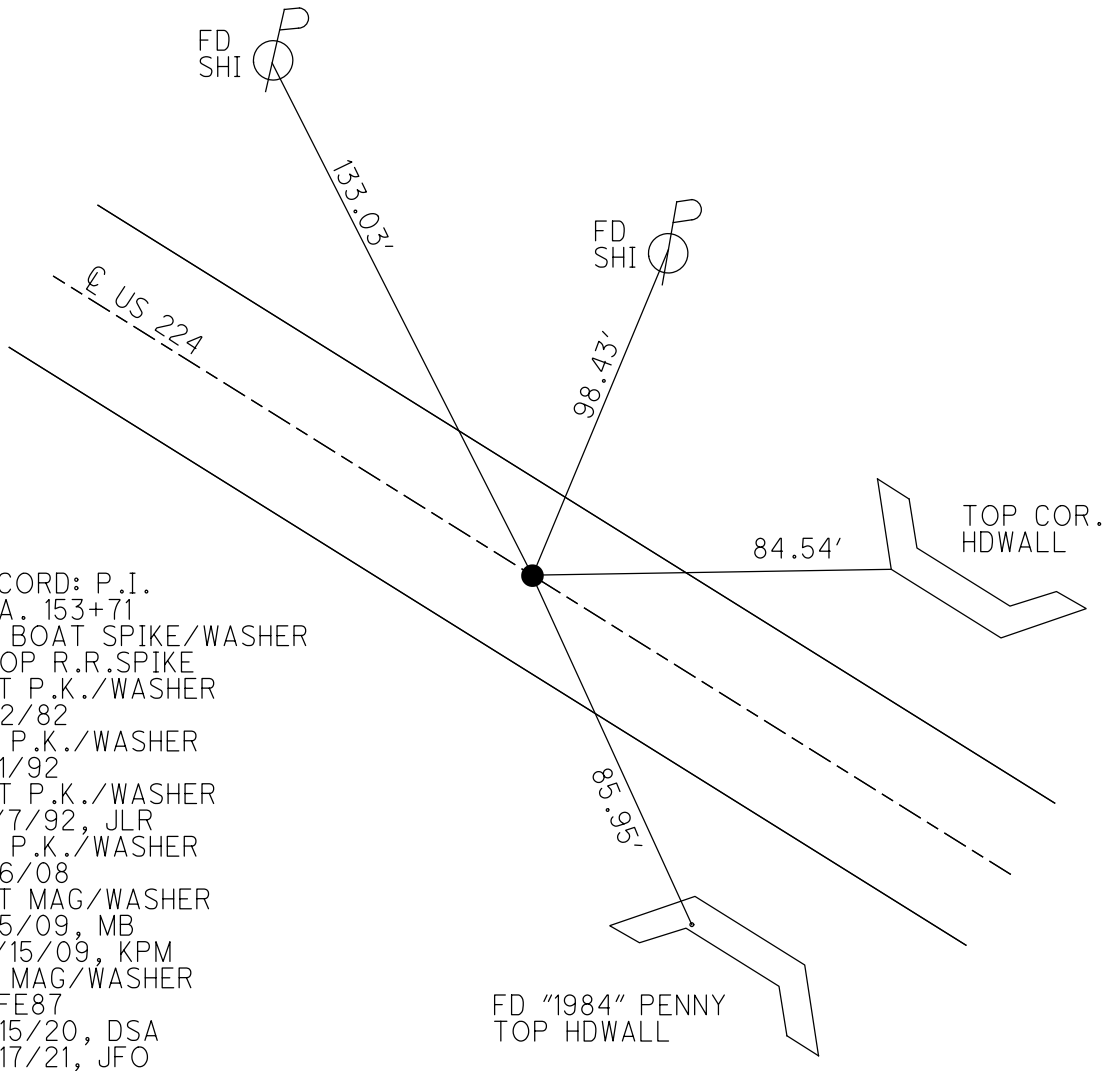
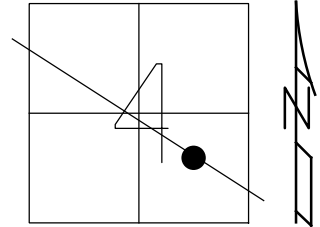
FD "1984" PENNY
 TOP HDWALL

O.D.O.T. DISTRICT 2 SURVEY OFFICE (USE ONLY)

PERSONNEL _____ REFERENCE NO. 87 E SHEET 33 OF 33
 NOTES RHOADES DATE 3/17/21 ROUTE US 224
 H.C. O'DONNELL WEATHER FAIR COUNTY SENECA
 R.C. _____ TEMP. 50° TOWNSHIP VENICE
 DWG BY NIESE PID PAVE TRAIN SECTION 4
 T 1 N R 17 E

TYPE MONUMENT MAG/WASHER
 ON SURFACE - ~~BELOW~~ ON
 OFFSET ☉ PAVEMENT 1' ~~LT~~ : RT
10.2' TO RT EDGE PAVEMENT
 STATION: 1471+50.41

HORZ.DATUM: NAD83 2011 GEOID: NAVD88 2012A
 GRID: NORTHING: 512032.625 EASTING: 1856870.601



RECORD: P.I.
 STA. 153+71
 FD BOAT SPIKE/WASHER
 ATOP R.R.SPIKE
 SET P.K./WASHER
 11/2/82
 FD P.K./WASHER
 7/1/92
 SET P.K./WASHER
 12/7/92, JLR
 FD P.K./WASHER
 5/6/08
 SET MAG/WASHER
 8/5/09, MB
 10/15/09, KPM
 FD MAG/WASHER
 REFE87
 9/15/20, DSA
 3/17/21, JFO

FD "1984" PENNY
 TOP HDWALL

O.D.O.T. DISTRICT 2 SURVEY OFFICE

PERSONNEL

REFERENCE NO. 87 E

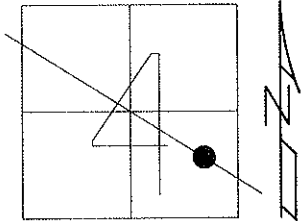
SHEET 32 OF 35

NOTES Moser
 H.C. Moser
 R.C. Pietkowski
Goldberg

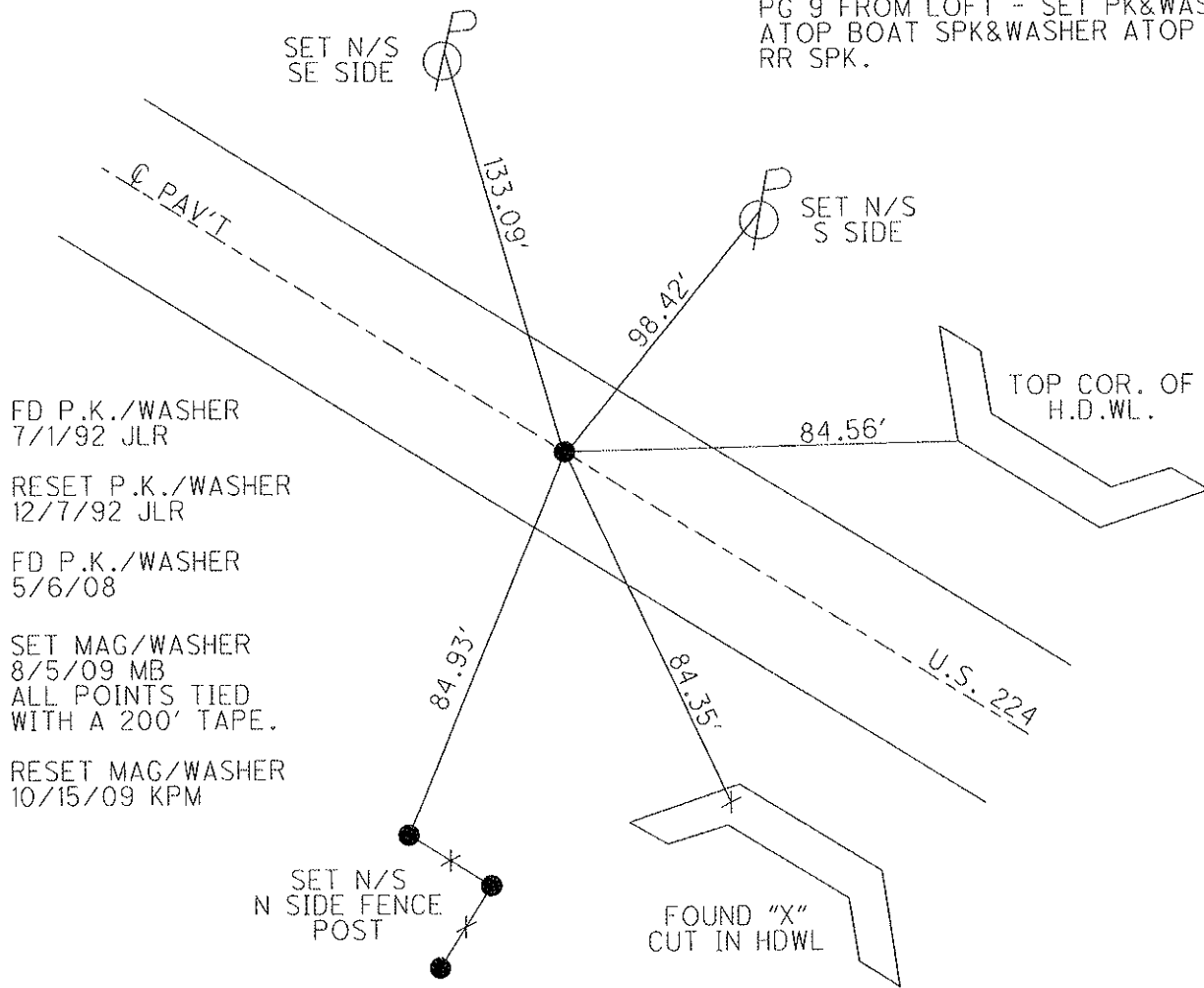
DATE 8-5-09
 WEATHER Fair
 TEMP. +40°

ROUTE U.S. 224
 COUNTY SENECA
 TOWNSHIP VENICE
 SECTION 4
 T. 1 N. R. 17 E

TYPE MONUMENT P.K./WASHER
 ON SURFACE - ~~BELOW~~ ON
 LEFT - Q PAV'T - RIGHT ON
10.2' TO RT. EDGE PAVEMENT
 S.L.M. 1471+50.41
 Grid: Northing: 512032.625 Easting: 1856870.601



RECORD: 11-02-82
 PI STA. 153+71 FIELD BOOK #59
 PG 9 FROM LOFT - SET PK&WASHER
 ATOP BOAT SPK&WASHER ATOP
 RR SPK.



FD P.K./WASHER
 7/1/92 JLR
 RESET P.K./WASHER
 12/7/92 JLR
 FD P.K./WASHER
 5/6/08
 SET MAG/WASHER
 8/5/09 MB
 ALL POINTS TIED
 WITH A 200' TAPE.
 RESET MAG/WASHER
 10/15/09 KPM

O.D.O.T. DISTRICT 2 SURVEY OFFICE

PERSONNEL

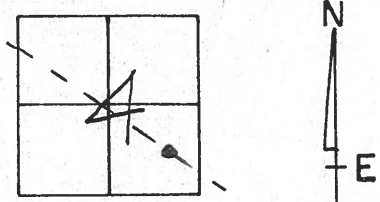
REFERENCE NO. 87-E SHEET 31 OF 32

NOTES Cheney
 H.C. RIPPLE
 R.C. BARBOUR
GEYMAN

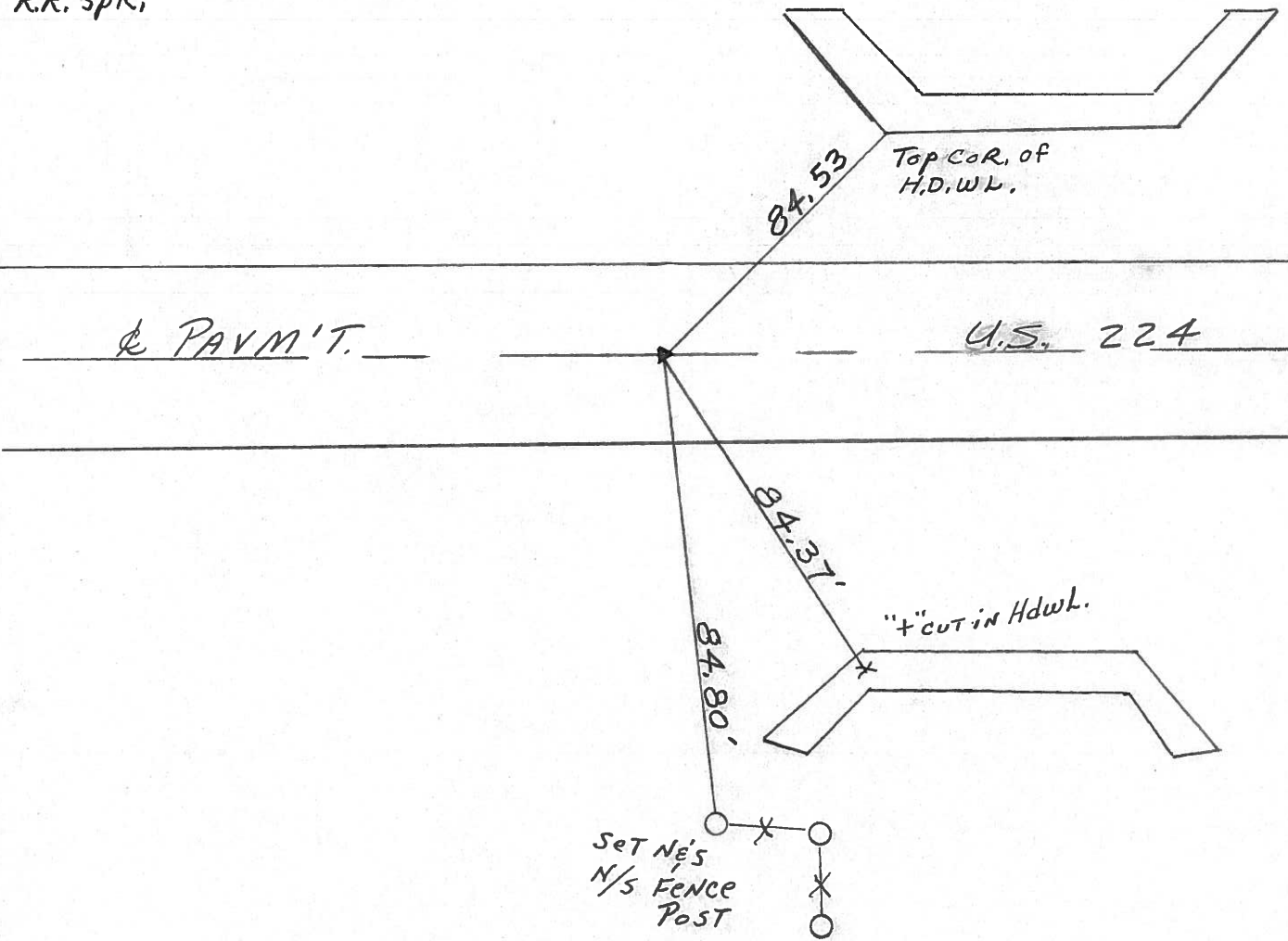
DATE 17-01-92
 WEATHER Cloudy
 TEMP. 65°

ROUTE U.S. 224
 COUNTY Seneca
 TOWNSHIP Venice
 SECTION 4
T1 N R 17 E

TYPE MONUMENT ⁷⁻¹⁻⁹² Fd. P.K. & WASHER - Reset P.K. & WASHER ¹²⁻⁰⁷⁻⁹²
 ON SURFACE - BELOW yes *J.L.R.*
 LEFT - & PAV'T. - RIGHT yes
10' TO RT. EDGE PAVEMENT
 S.L.M. 1471+00



Record: 11-02-82
 P.I. STA. 153+71 Field Book #59
 Pg 9 from left - set P.K. & WASHER
 ATOP boat spk. & WASHER ATOP
 R.R. Spk.



County Seneca S. R. # 224

Township Venice

Section 4

T/LN, R/E

Personnel Crozin

Ripple

Geyman

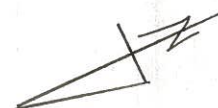
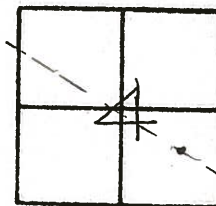
Barbour

87-E

Date 11/02/82 Drawn 1/25/83

Weather sunny-windy

Temp. 65°



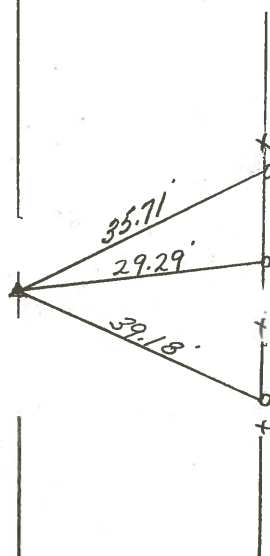
P.I

53+71 Field Bk. #59,

2.9 from Loff - set P.K. & washer

at top boat spike, & washer at top

C.R. spike



S. R. # U.S. # 224

| PERSONNEL | TITLE | PERSONNEL | TITLE |
|-----------|-------|-----------|-------|
| Schneider | | | |
| Mosser | | | |
| Barbour | | | |
| Potts | | | |

COUNTY Seneca DATE 7-18-68
 S. R. U.S.#224 WEATHER Fair
 SEC. S.R.#100 to Attica TEMP. 60°

DESCRIPTION Ties for Control Points JOB NO. _____

88-A

P.O.T. ✓
 15434
 R.R. spk.
 Reset P.K. Nail

8638

24" Dead Elm

10/02/82
 sunny
 60° windy

TART

P.T.
 1539+954

88-AA

R.R. spk.
 Reset P.K. Nail
 Washer

8637

Con. Rd. #81
 North

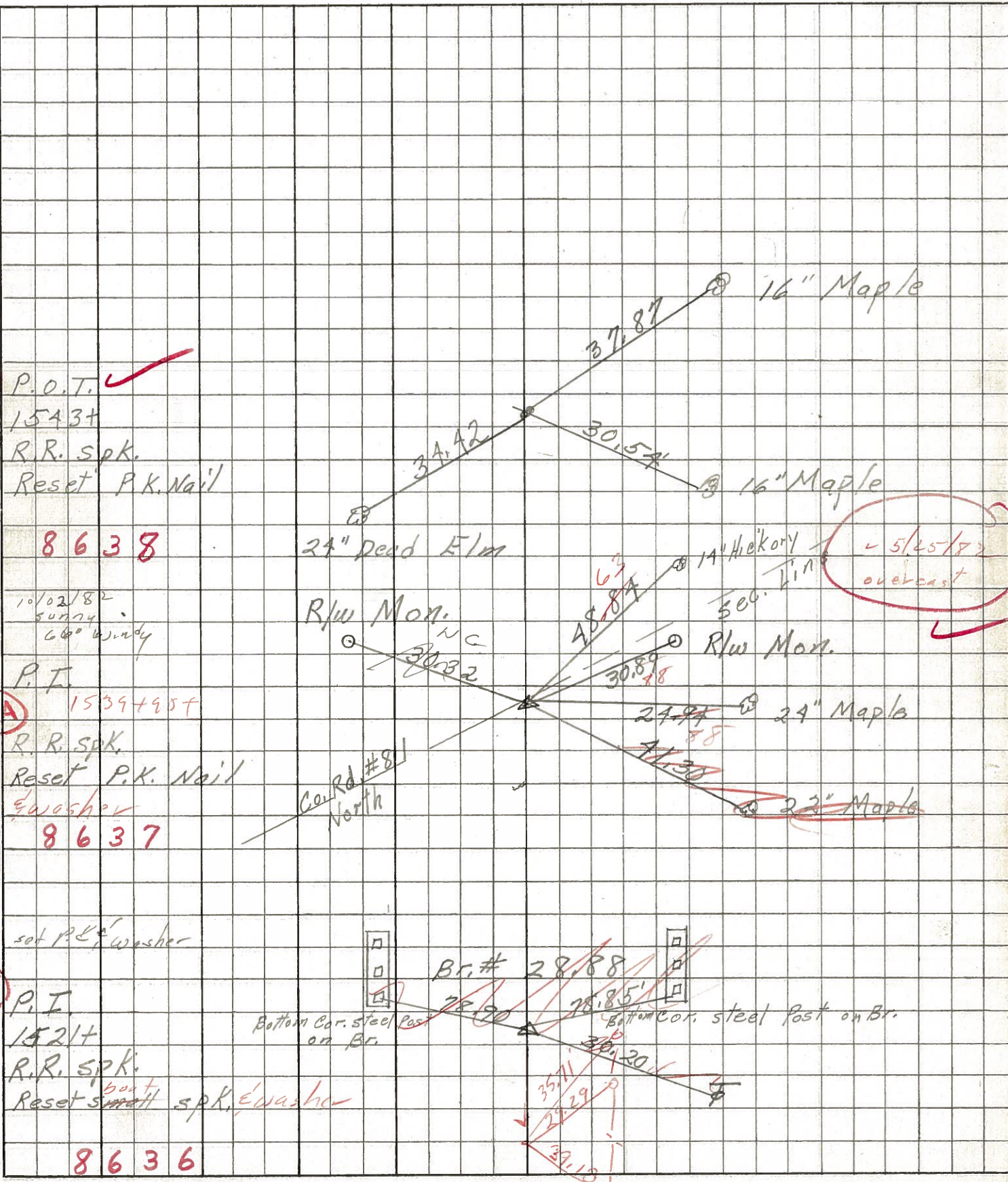
set P.K. Washer

87-E

P.T.
 15214
 R.R. spk.
 Reset ^{box} small spk. Washer

8636

Br. # 28.88
 Bottom Cor. steel Post on Br. Bottom Cor. steel Post on Br.



5/25/82
 overcast

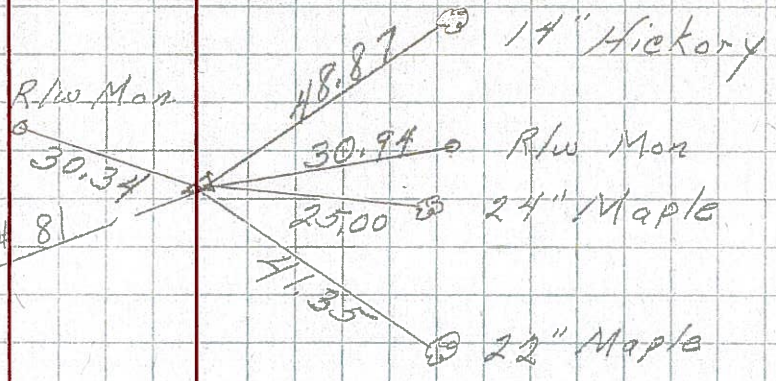
PERSONNEL _____ TITLE _____ PERSONNEL _____ TITLE _____
 COUNTY Seneca DATE 1-12-66
 S. R. U.S. # 224 WEATHER _____
 SEC. _____ TEMP. _____
 DESCRIPTION S.R. # 19 - A H'ica JOB NO. _____

85-AA

222+70.4
 $\Delta = 0^\circ 21' \text{ Rt}$
 R.R. spk on $\&$ R/w

199

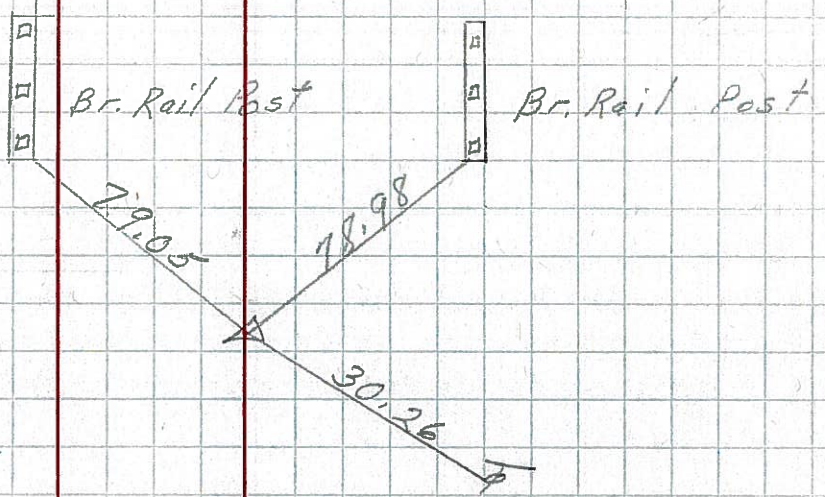
Twp Rd # 81
 North



87-E

207+71
 $\Delta = 0^\circ 18' \text{ Lt}$
 R.R. spk on $\&$ R/w

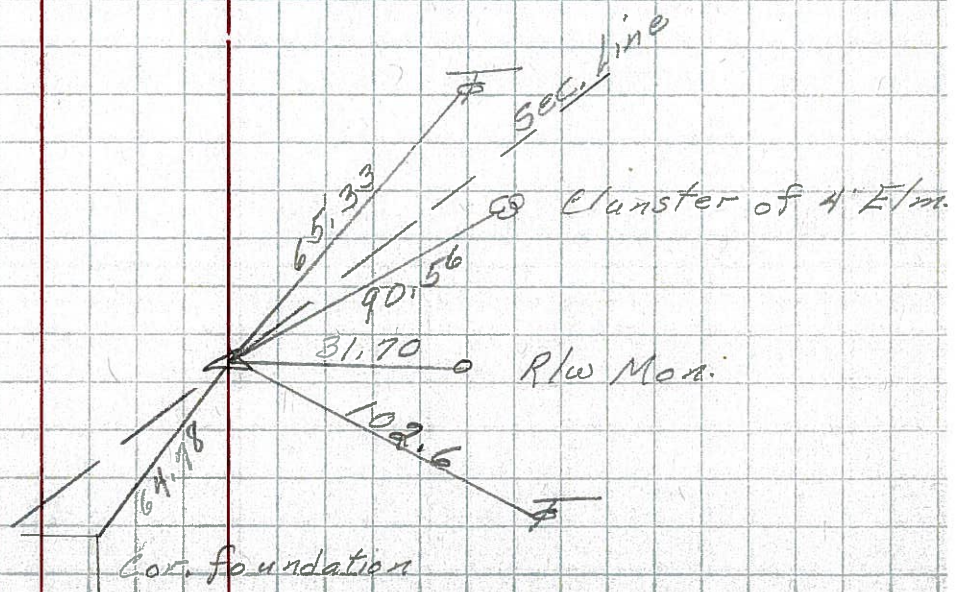
198



89-C

192+67.8
 $\Delta = 0^\circ 16' \text{ Lt}$
 R.R. spk on $\&$ R/w

197



PERSONNEL TITLE PERSONNEL TITLE

E. Krabill

COUNTY Seneca DATE

J. Kowalski

S. R. 224 WEATHER

D. Brooks

SEC. TEMP.

DESCRIPTION

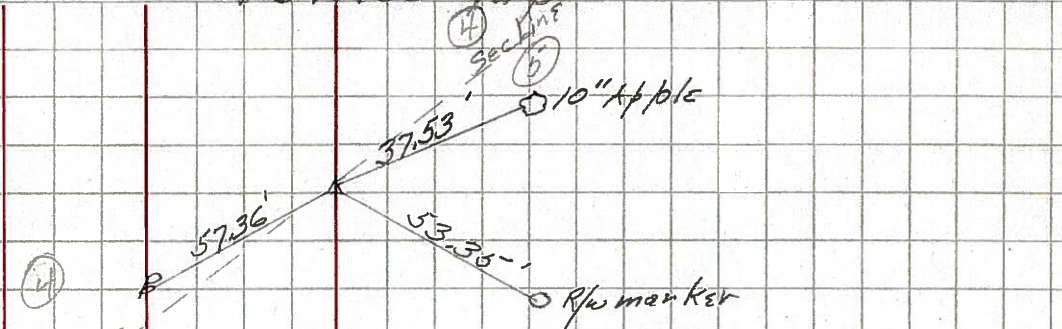
LEFT

CENTER LINE

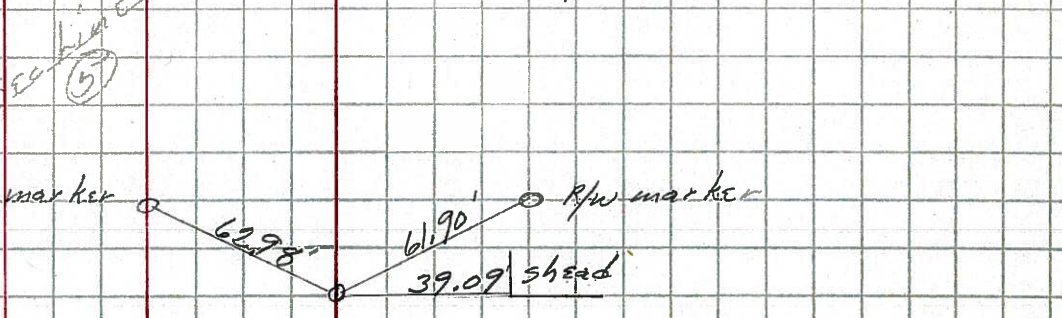
RIGHT

JOB NO.

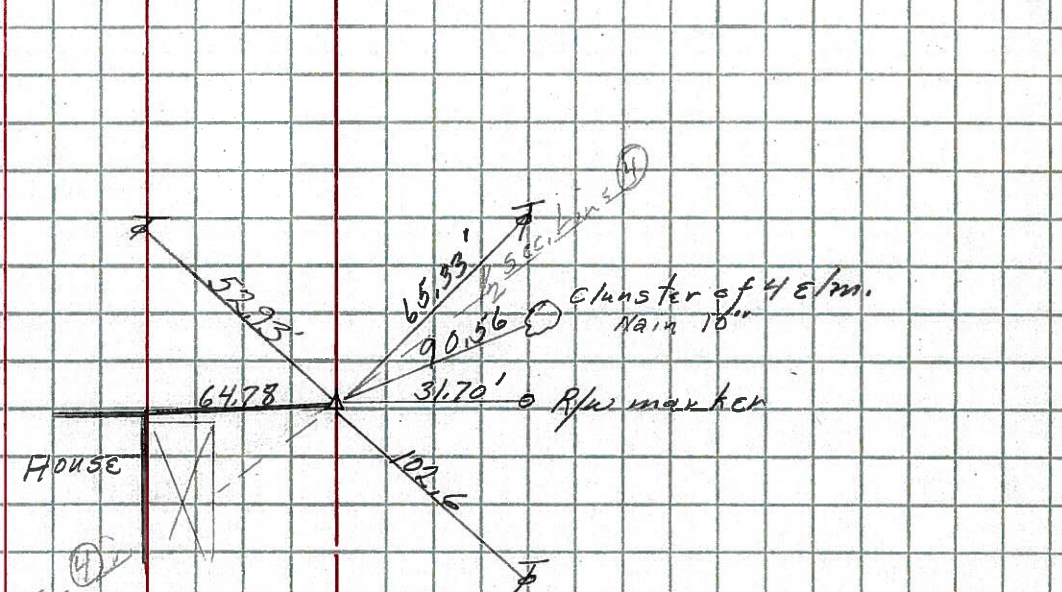
old sta 162+22.2 ~~98A~~ #196
 P.I. $\Delta=0^{\circ}-23'RT$
 R.R. spike
 cor stone on E of R/W



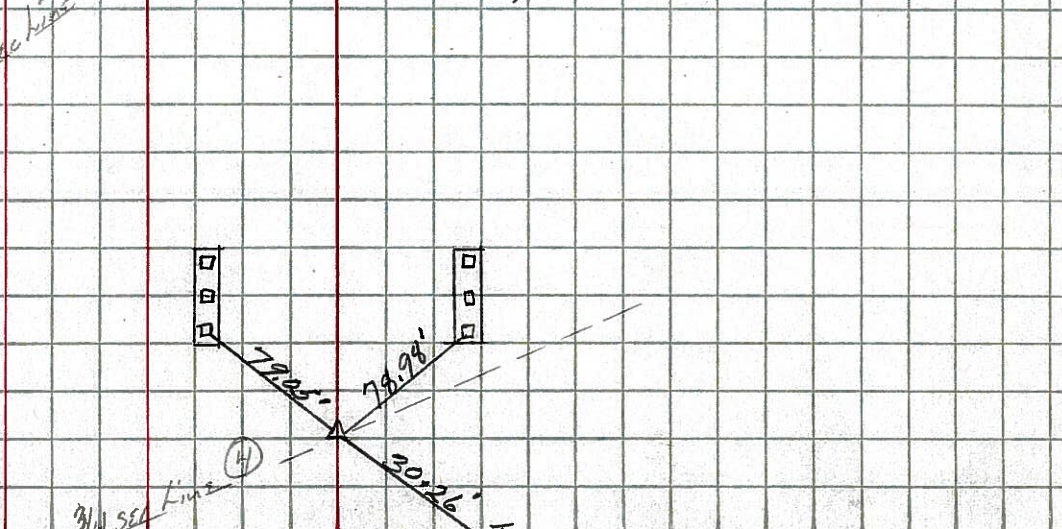
1-8-64 ~~98B~~ #196A
 P.O.T.
 R.R. spike



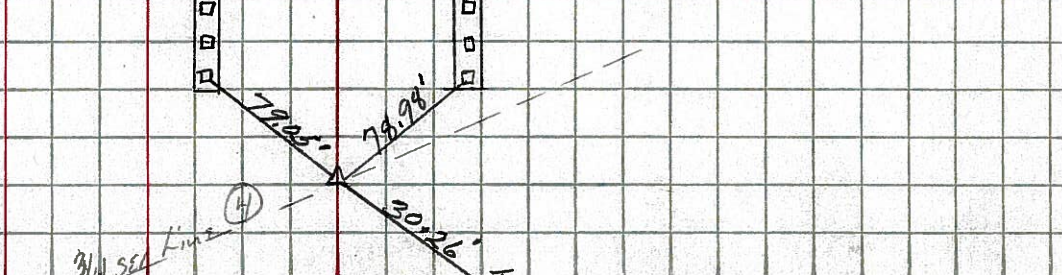
87-C ~~98C~~ old sta 192+67.8 #197
 P.I. $\Delta=0^{\circ}-16'LT$
 R.R. spike



87-E ~~98D~~ old sta 207+71 #198
 P.I. $\Delta=0^{\circ}-18'LT$
 R.R. spike



1-8-64 3/4 ~~98E~~



PERSONNEL TITLE PERSONNEL TITLE

COUNTY Seneca

DATE 10-11-49

S. R. #224

WEATHER

SEC. G-D-F-E

TEMP.

DESCRIPTION S.H. #272

LEFT

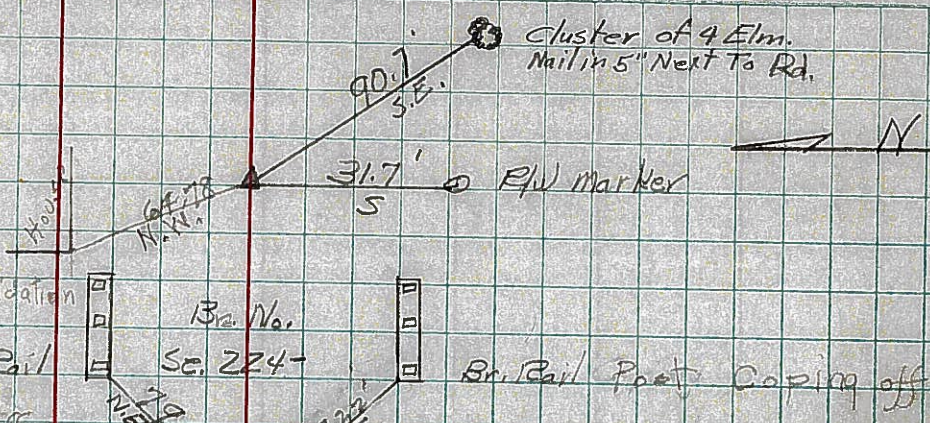
CENTER LINE

RIGHT

JOB NO.

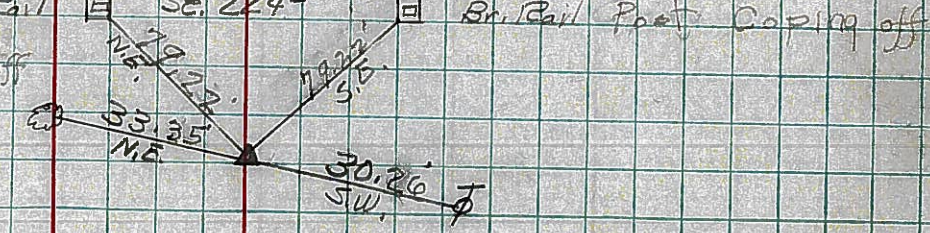
87-C

207+71
15+23.2
Sta. 192+67.8
Δ=0°-16' Lt.
R.R. Spike on & R/W
6-26-59
8-10-59 Reset. #197



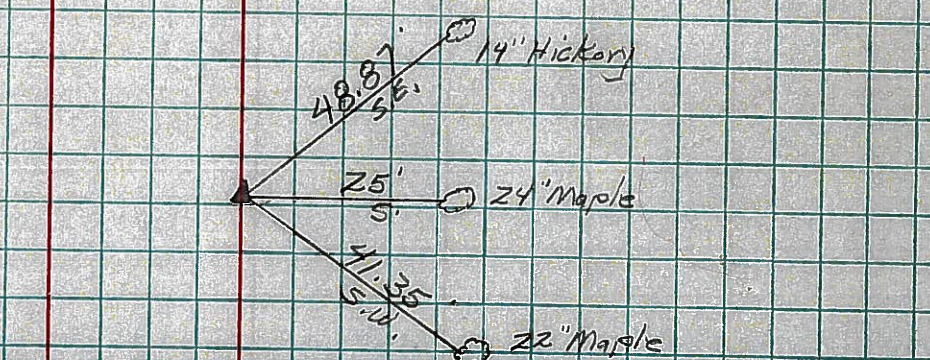
87-E

Sta. 207+71
Δ=0°-18' Lt.
R.R. Spike on & R/W
6-26-59
8-10-59 Reset. #198



88-AA

Sta. 222+70.4
Δ=0°-21' Rt.
R.R. Spike on & R/W
6-26-59
8-10-59 Reset #199



88-A

Sta. 229+86
Δ=0°-0'
R.R. Spike on & R/W
6-26-59
Re-set #200
8-10-59

