

O.D.O.T. DISTRICT 2 SURVEY OFFICE (USE ONLY)

PERSONNEL

REFERENCE NO. 88 AA

SHEET 1 OF 16

NOTES RHOADES DATE 11/9/23

ROUTE US 224

H.C. AUBLE WEATHER CLOUDY

COUNTY SENECA

R.C. ASTON TEMP. 48°

TOWNSHIP VENICE

NIESE

SECTION 4

DWG BY RHOADES PID 101217

T 1 N R 17 E

TYPE MONUMENT MAG/WASHER

ON SURFACE - ~~BELOW~~ ON

OFFSET ☑ PAVEMENT ON LT : RT

11.4' TO RT EDGE PAVEMENT

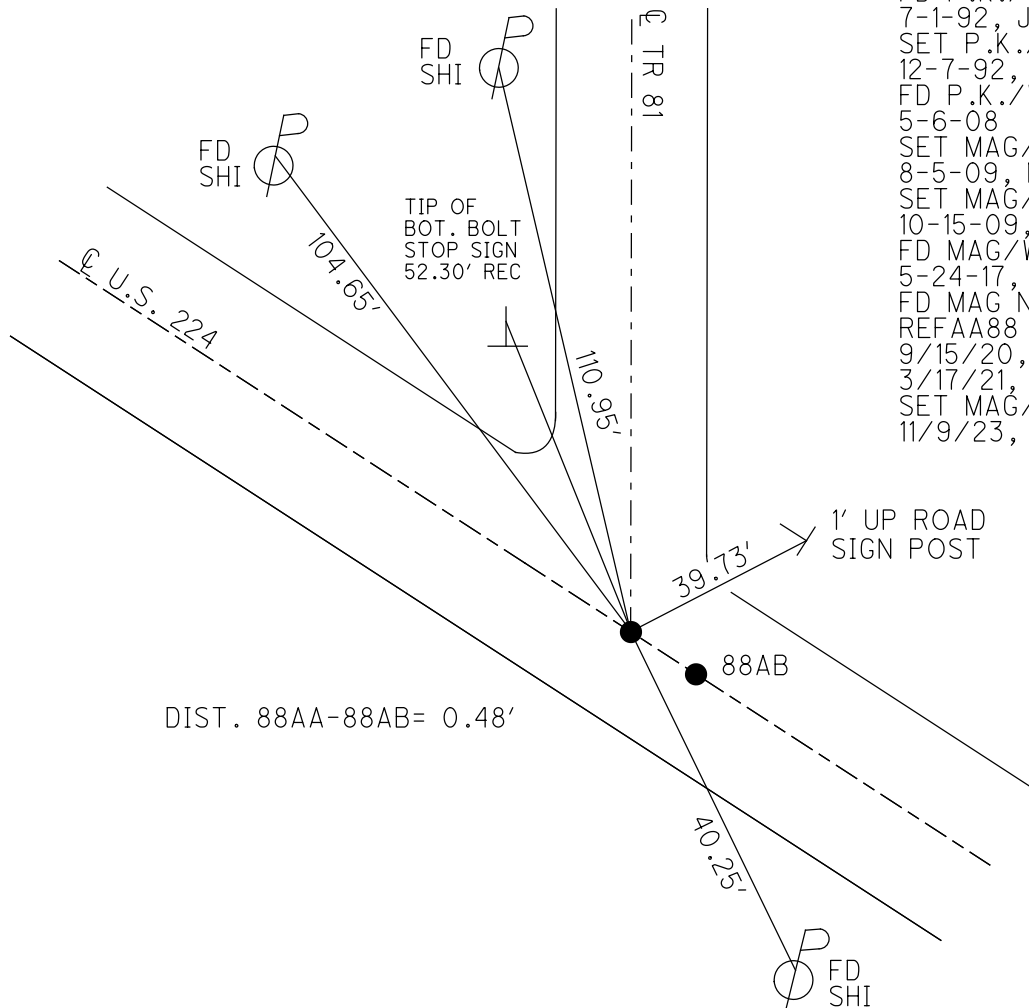
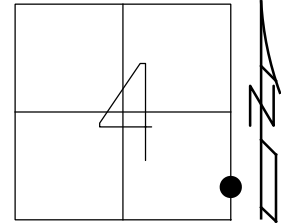
STATION: 1486+47.08

HORZ. DATUM: NAD83 (2011)

GEOID: NAVD88 2018

GRID: NORTHING: 511325.886

EASTING: 1858190.016



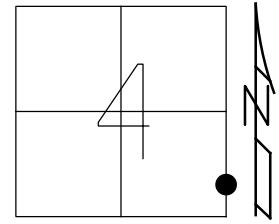
- RECORD:
- FD P.K./WASHER 7-1-92, JLR
 - SET P.K./WASHER 12-7-92, JLR
 - FD P.K./WASHER 5-6-08
 - SET MAG/WASHER 8-5-09, MB
 - SET MAG/WASHER 10-15-09, KPM
 - FD MAG/WASHER 5-24-17, JFO
 - FD MAG NAIL REFAA88
 - 9/15/20, DSA
 - 3/17/21, JFO
 - SET MAG/WASHER 11/9/23, DSA

DIST. 88AA-88AB= 0.48'

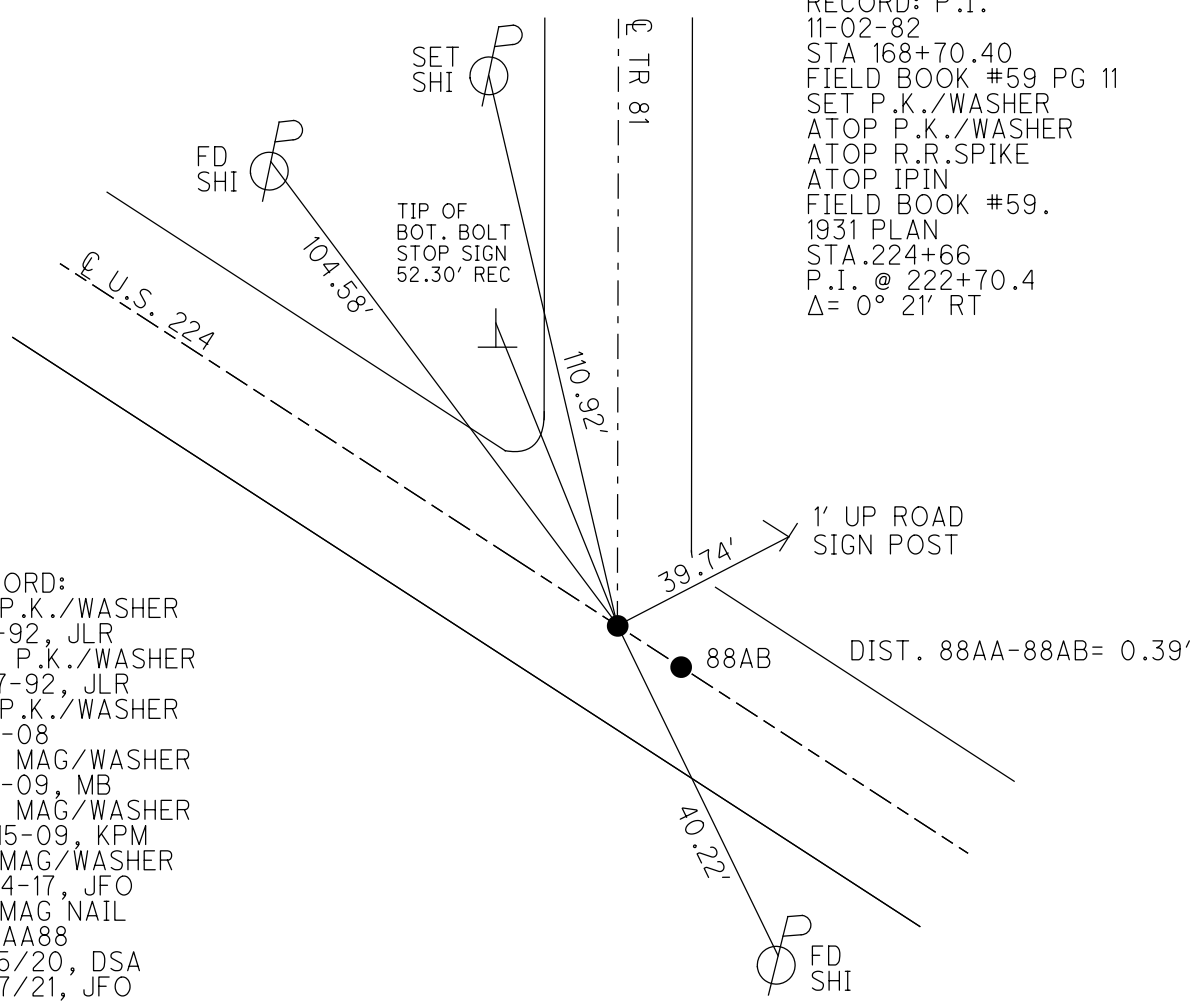
O.D.O.T. DISTRICT 2 SURVEY OFFICE (USE ONLY)

PERSONNEL _____ REFERENCE NO. 88 AA SHEET 1 OF 16
 NOTES RHOADES DATE 3/17/21 ROUTE US 224
 H.C. O'DONNELL WEATHER FAIR COUNTY SENECA
 R.C. _____ TEMP. 50° TOWNSHIP VENICE
 DWG BY NIESE PID PAVE TRAIN SECTION 4
 T 1 N R 17 E

TYPE MONUMENT MAG NAIL
 ON SURFACE - ~~BELOW~~ ON
 OFFSET 11.4' TO RT EDGE PAVEMENT
 STATION: 1486+47.08



HORZ. DATUM: NAD83 (2011) GEOID: NAVD88 2012A
 GRID: NORTHING: 511325.867 EASTING: 1858190.039



RECORD: P.I.
 11-02-82
 STA 168+70.40
 FIELD BOOK #59 PG 11
 SET P.K./WASHER
 ATOP P.K./WASHER
 ATOP R.R.SPIKE
 ATOP IPIN
 FIELD BOOK #59.
 1931 PLAN
 STA.224+66
 P.I. @ 222+70.4
 $\Delta = 0^\circ 21' RT$

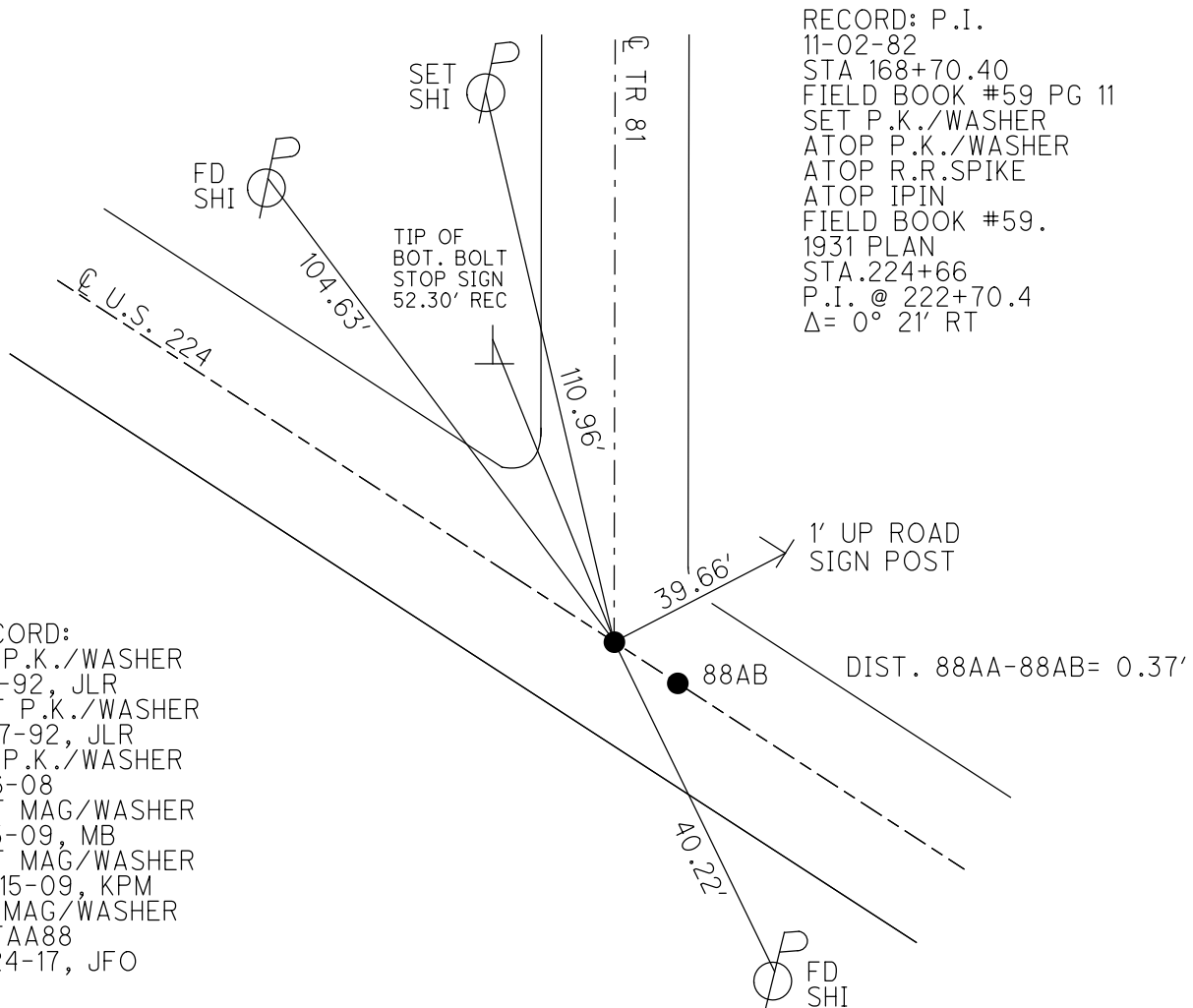
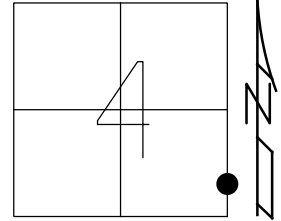
RECORD:
 FD P.K./WASHER
 7-1-92, JLR
 SET P.K./WASHER
 12-7-92, JLR
 FD P.K./WASHER
 5-6-08
 SET MAG/WASHER
 8-5-09, MB
 SET MAG/WASHER
 10-15-09, KPM
 FD MAG/WASHER
 5-24-17, JFO
 FD MAG NAIL
 REFAA88
 9/15/20, DSA
 3/17/21, JFO

O.D.O.T. DISTRICT 2 SURVEY OFFICE (USE ONLY)

PERSONNEL _____ REFERENCE NO. 88 AA SHEET 1 OF 16
 NOTES RHOADES DATE 5/24/17 ROUTE US 224
 H.C. O'DONNELL WEATHER CLOUDY COUNTY SENECA
 R.C. POORE TEMP. 62° TOWNSHIP VENICE
 DWG BY MILLER PID 102819 SECTION 4
 T 1 N R 17 E

TYPE MONUMENT MAG/WASHER
 ON SURFACE - ~~BELOW~~ ON
 OFFSET ☉ PAVEMENT ON LT : RT
11.4' TO RT EDGE PAVEMENT
 STATION: 1486+47.08

HORZ. DATUM: NAD83 (2011) GEOID: NAVD88 2012A
 GRID: NORTHING: 511325.867 EASTING: 1858190.039



RECORD: P.I.
 11-02-82
 STA 168+70.40
 FIELD BOOK #59 PG 11
 SET P.K./WASHER
 ATOP P.K./WASHER
 ATOP R.R.SPIKE
 ATOP IPIN
 FIELD BOOK #59.
 1931 PLAN
 STA. 224+66
 P.I. @ 222+70.4
 $\Delta = 0^\circ 21' RT$

RECORD:
 FD P.K./WASHER
 7-1-92, JLR
 SET P.K./WASHER
 12-7-92, JLR
 FD P.K./WASHER
 5-6-08
 SET MAG/WASHER
 8-5-09, MB
 SET MAG/WASHER
 10-15-09, KPM
 FD MAG/WASHER
 REFAA88
 5-24-17, JFO

O.D.O.T. DISTRICT 2 SURVEY OFFICE

PERSONNEL

REFERENCE NO. 88 AA

SHEET 33 OF 35

NOTES Moser

DATE 8-5-09

ROUTE U.S. 224

H.C. Moser

WEATHER Fair

COUNTY SENECA

R.C. Pietkowski

TEMP. +40°

TOWNSHIP VENICE

Goldberg

SECTION 4

T 1 N R 17 E

TYPE MONUMENT P.K./WASHER

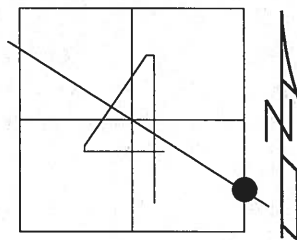
ON SURFACE - ~~BELOW~~ ON

LEFT - ℄ PAV'T - RIGHT ON

11.4' TO RT EDGE PAVEMENT

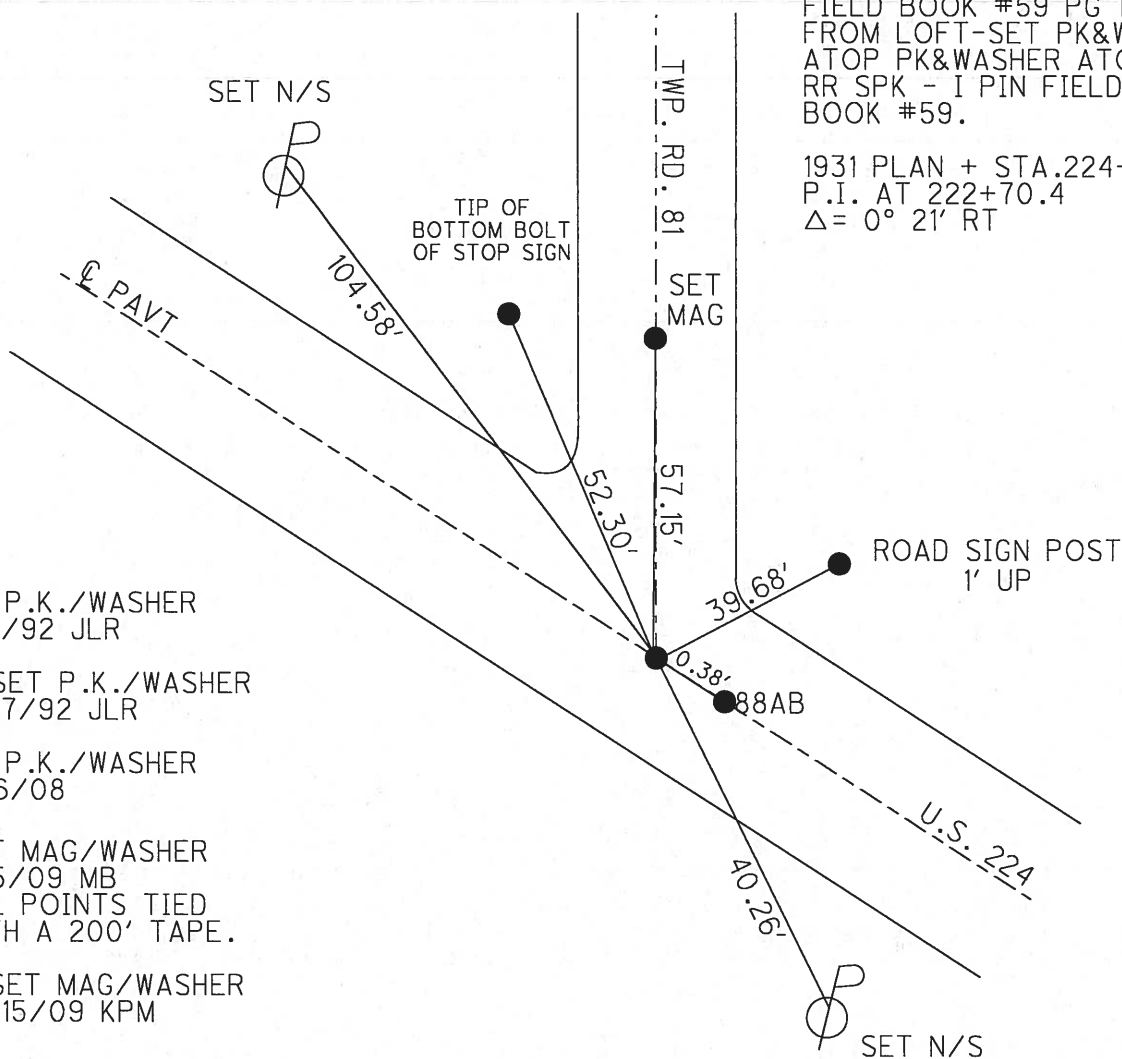
S.L.M. 1486 + 47.08

Grid: Northing: 511325.921 Easting: 1858189.975



RECORD: 11-02-82
 PI STA 168+70.40
 FIELD BOOK #59 PG 11
 FROM LOFT-SET PK&WASHER
 ATOP PK&WASHER ATOP
 RR SPK - I PIN FIELD
 BOOK #59.

1931 PLAN + STA.224+66
 P.I. AT 222+70.4
 $\Delta = 0^\circ 21' RT$



FD P.K./WASHER
7/1/92 JLR

RESET P.K./WASHER
12/7/92 JLR

FD P.K./WASHER
5/6/08

SET MAG/WASHER
8/5/09 MB
ALL POINTS TIED
WITH A 200' TAPE.

RESET MAG/WASHER
10/15/09 KPM

O.D.O.T. DISTRICT 2 SURVEY OFFICE

PERSONNEL

REFERENCE NO. 88

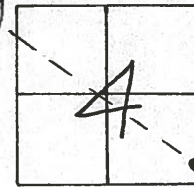
SHEET 32 OF 32

NOTES Chency
 H.C. Ripple
 R.C. BARBOUR
GEYMAN

DATE 17-07-92
 WEATHER Cloudy
 TEMP. 65°

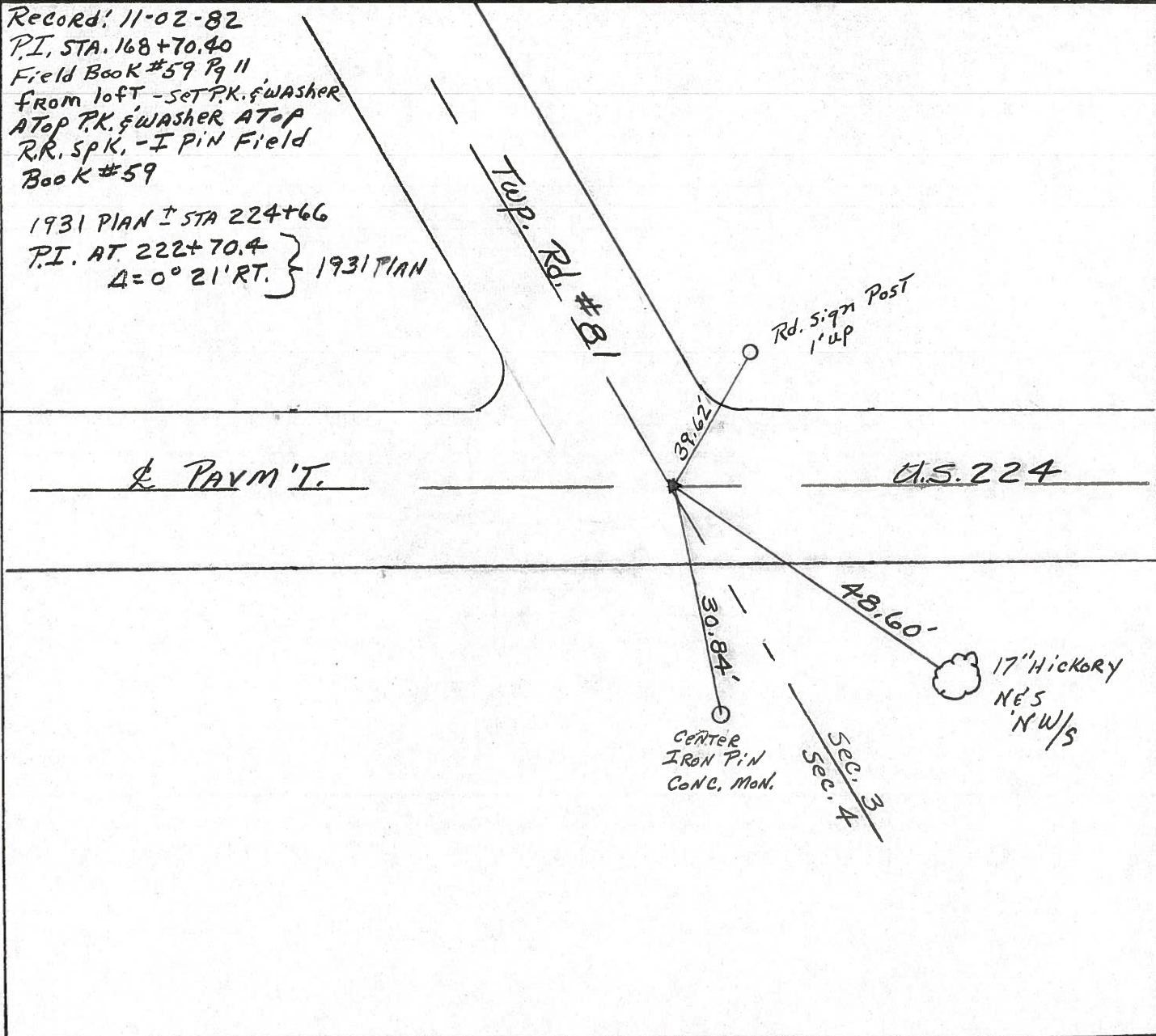
ROUTE U.S. 224
 COUNTY Seneca
 TOWNSHIP Venice
 SECTION 4
T1 N R 17 E

7-1-92
 TYPE MONUMENT Ed. PK. Washer Reset P.K. Washer
 ON SURFACE - BELOW yes 12-07-92
~~LEFT~~ - & ~~PAV'T.~~ - ~~RIGHT~~ yes J.L.R.
10' TO RT. EDGE PAVEMENT
 S.L.M. 1485+96



88-AA

Record: 11-02-82
 P.I. STA. 168+70.40
 Field Book #59 Pg 11
 From left - set P.K. Washer
 ATOP P.K. Washer ATOP
 R.R. Spk. - I Pin Field
 Book #59
 1931 PLAN ± STA 224+66
 P.I. AT 222+70.4 } 1931 PLAN
 Δ = 0° 21' RT.



County Seneca S.R. # 224

Township Venice

Section 4

T₁N, R₁₂E

Personnel Cronin

Ripple

Geyman

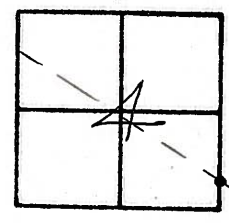
Barbour

88-AA

Date 11/02/82 Drawn 1/25/83

Weather sunny-windy

Temp. 65°



P.I.

168+70.40 - Field Bk #39,

9-11 - from loft - set P.K. & washer

at top P.K. & washer at top L.L.

spike. (I.P. (Field Bk #59))

Twp. Rd. #8L

4863' 14" hickory

30.88' Sec. 3
O.R./W. Mon. Sec. 4

24.88' 24" Maple

1931 PLAN ± STA 224+66

P.I. at 222+70.4 } 1931 PLAN
Δ = 0°-21' RT.

R/W U.S. #224

PERSONNEL	TITLE	PERSONNEL	TITLE
Schneider			
Mosser			
Barbour			
Potts			

COUNTY Seneca DATE 4-2-68
 S. R. U.S. #224 WEATHER Fair
 SEC. S.R. #100 to Attica TEMP. 60°

DESCRIPTION Ties for Control Points JOB NO. _____
 LEFT CENTER LINE RIGHT

88-A

P.O.T. ✓
 15431
 R.R. Spk.
 Reset P.K. Nail

8638

24" Dead Elm

10/02/82
 sunny
 60° windy

R/w Mon.
 NC
 30.32

14" Hickory
 500' Lin
 R/w Mon.

5/25/82
 overcast

88-AA

P.I.
 1539+95T
 R.R. Spk.
 Reset P.K. Nail
 Washer

8637

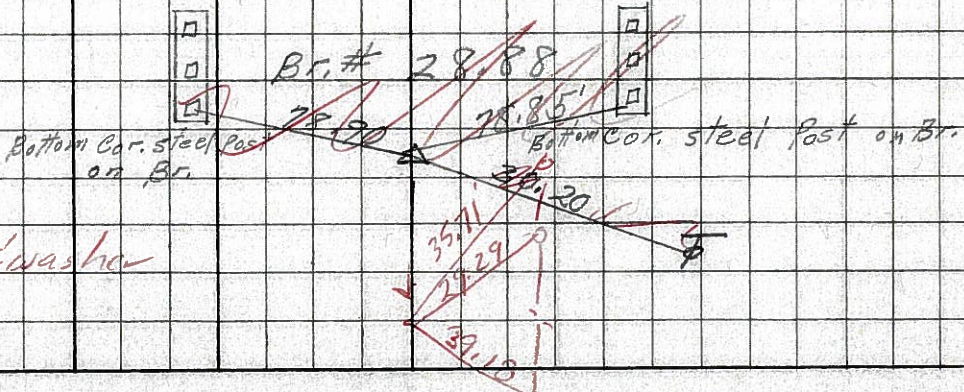
Car Rd #81
 North

24" Maple
~~22" Maple~~

87-E

P.I.
 1521+
 R.R. Spk.
 Reset ^{back} small spk. Washer

8636



PERSONNEL TITLE PERSONNEL TITLE

COUNTY Seneca DATE 1-12-66

S. R. U.S. # 224 WEATHER

SEC. TEMP.

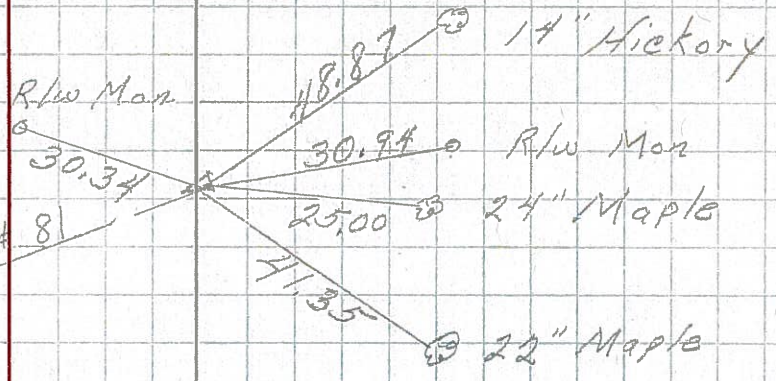
DESCRIPTION S.R. # 19 - A Hica LEFT CENTER LINE RIGHT JOB NO.

88-AA

222+70.4
Δ = 0° 21' Rt.
R.R. spk on & R/w

199

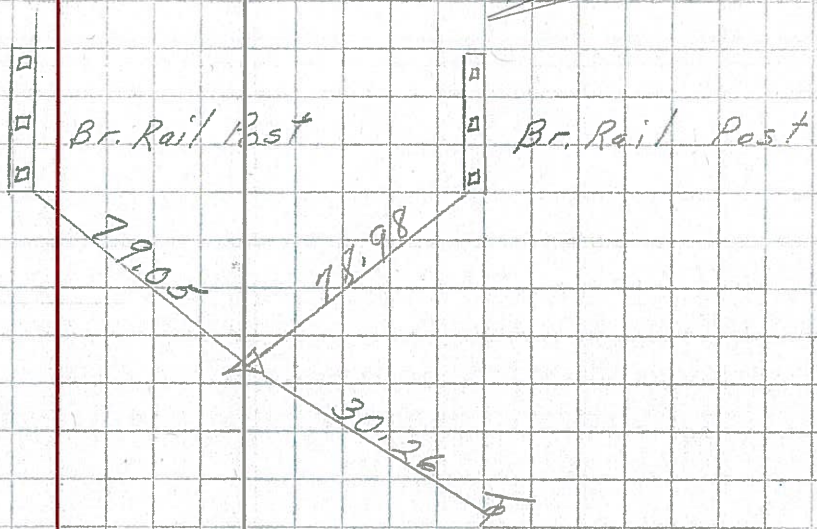
Twp Rd # 8
North



87-E

207+71
Δ = 0° 18' Lt
R.R. spk on & R/w

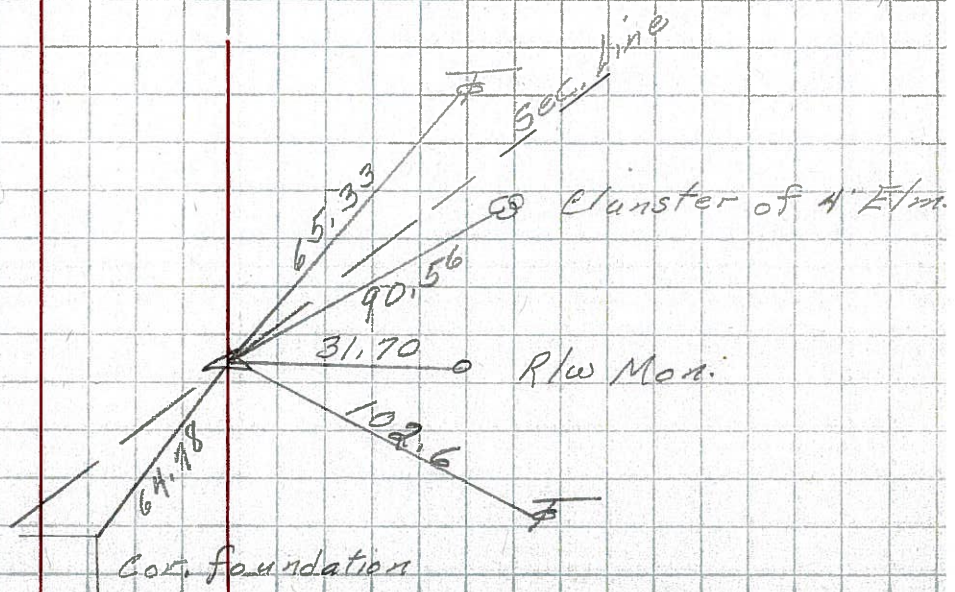
198



89-C

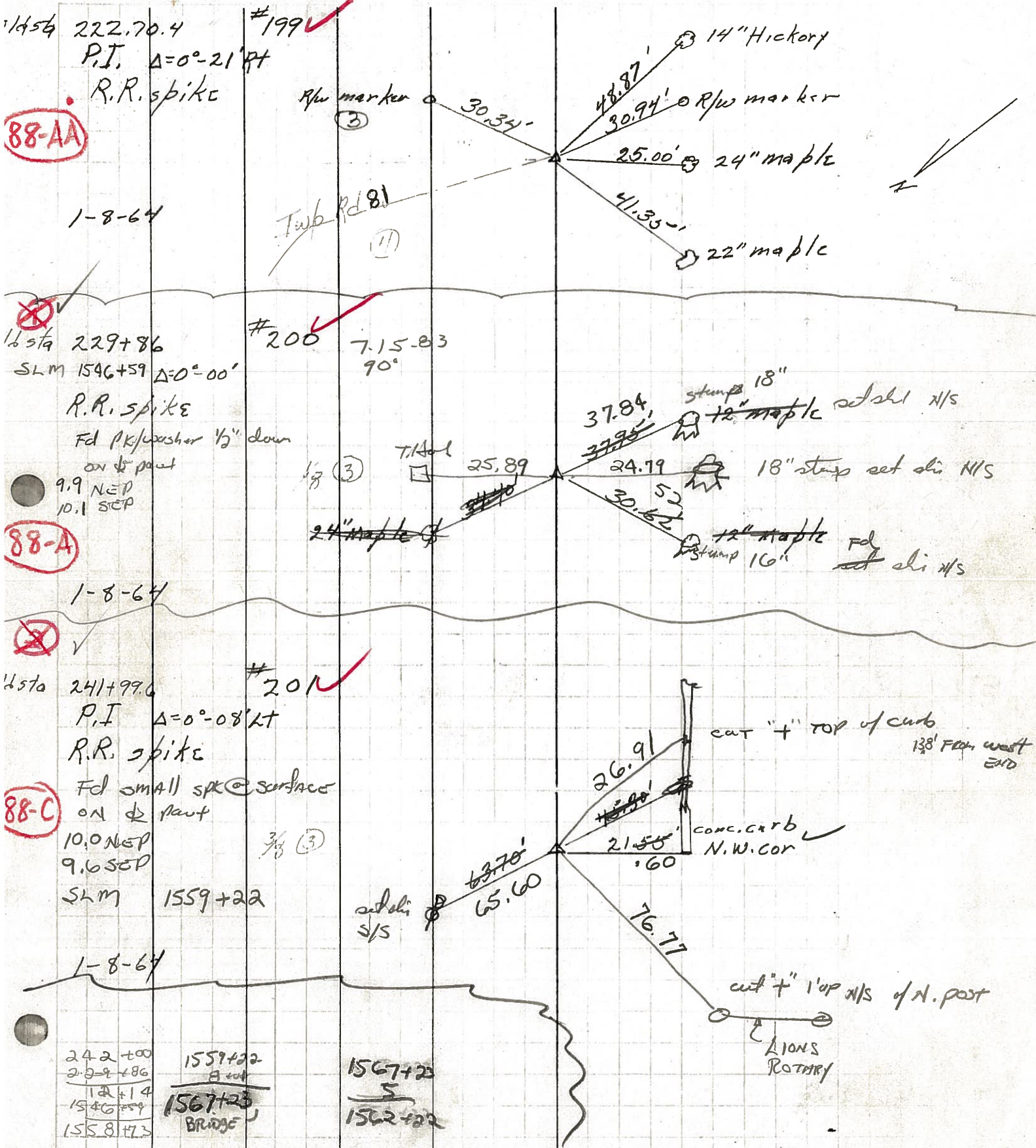
192+67.8
Δ = 0° 16' Lt
R.R. spk on & R/w

197



PERSONNEL	TITLE	PERSONNEL	TITLE	COUNTY	DATE
KrabiLL				SENEGA	
Howarth				S. R. U.S. 224	
Brooks					
				SEC.	TEMP.

DESCRIPTION	LEFT	CENTER LINE	RIGHT	JOB NO.
-------------	------	-------------	-------	---------



242+00	1559+22	1567+23
229+86	8 cut	5
12+14	1567+23	1562+22
1546+59	BRIDGE	
1558+73		

PERSONNEL TITLE PERSONNEL TITLE

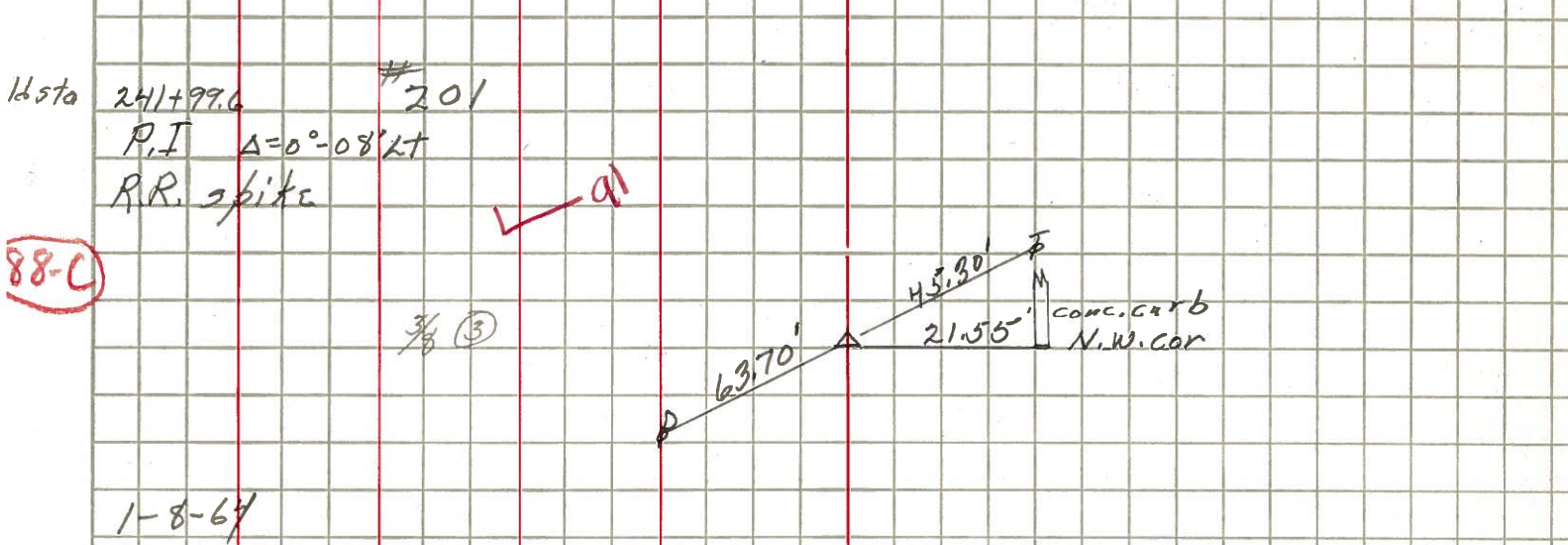
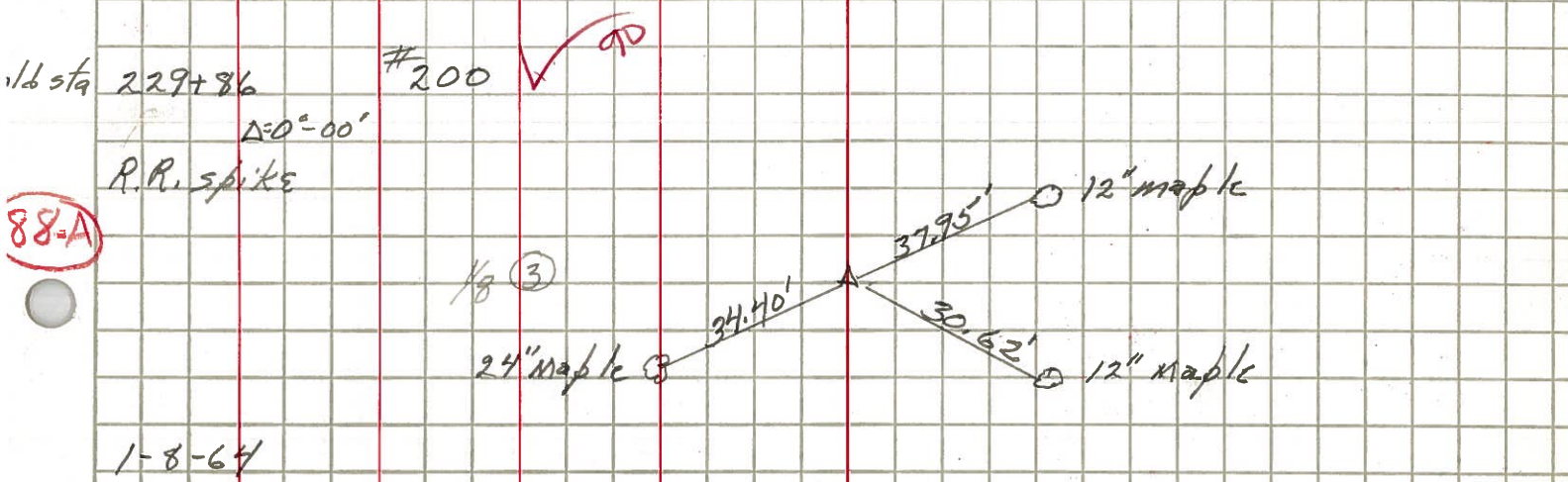
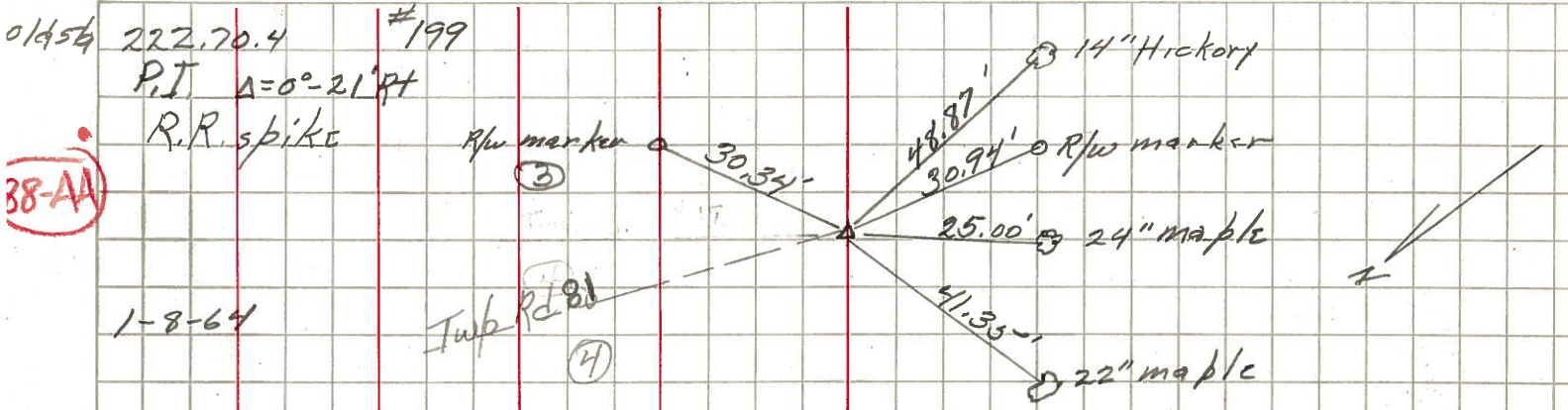
Krabi, LL
Towaleski
Brooks

COUNTY _____ DATE _____

S. R. _____ WEATHER _____

SEC. _____ TEMP. _____

DESCRIPTION LEFT CENTER LINE RIGHT JOB NO.



PERSONNEL TITLE PERSONNEL TITLE

COUNTY Seneca

DATE 10-11-49

S. R. #224

WEATHER

SEC. G-D-F-E

TEMP.

DESCRIPTION S.H. #272

LEFT

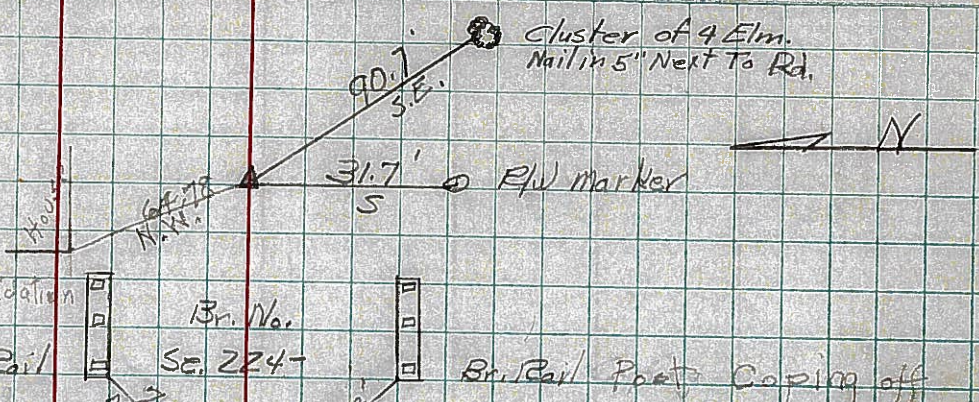
CENTER LINE

RIGHT

JOB NO.

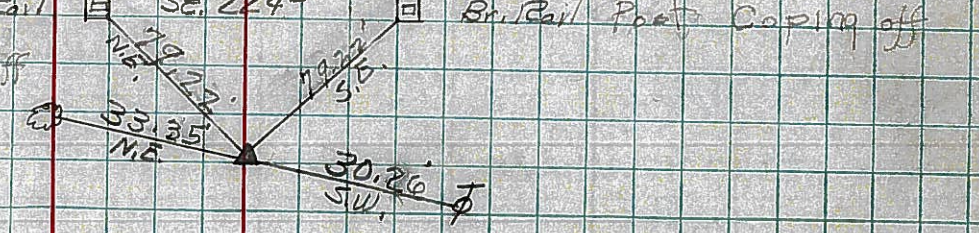
87-C

227.71 0
15 203.2
Sta. 192+67.8
Δ = 0°-16' Lt.
R.R. Spike on & R/W
6-26-59
8-10-59 Reset #197



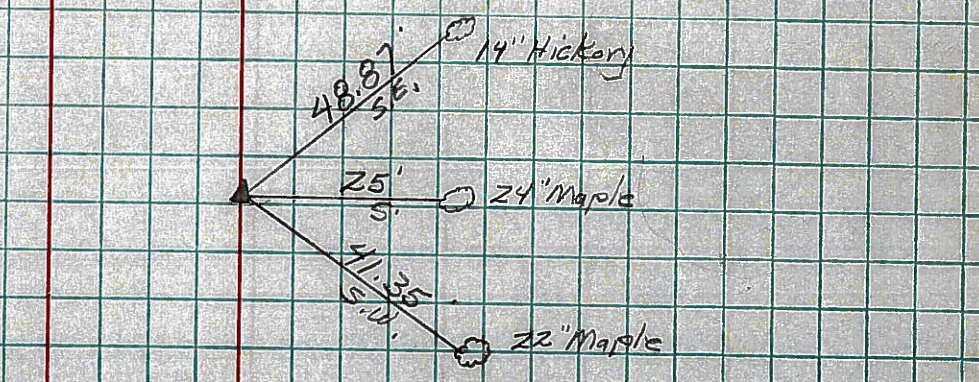
87-E

Sta. 207+71
Δ = 0°-18' Lt.
R.R. Spike on & R/W
6-26-59
8-10-59 Reset #198



88-AA

Sta. 222+70.4
Δ = 0°-21' RA.
R.R. Spike on & R/W
6-26-59
8-10-59 Reset #199



88-A

Sta. 229+86
Δ = 0°-0'
R.R. Spike on & R/W
6-26-59
Re-set #200
8-10-59

