

O.D.O.T. DISTRICT 2 SURVEY OFFICE (USE ONLY)

PERSONNEL

REFERENCE NO. 88 AB

SHEET 2 OF 16

NOTES RHOADES DATE 11/9/23

ROUTE US 224

H.C. AUBLE WEATHER CLOUDY

COUNTY SENECA

R.C. ASTON TEMP. 48°

TOWNSHIP VENICE

NIESE

SECTION 4

DWG BY RHOADES PID 101217

T 1 N R 17 E

TYPE MONUMENT MAG/WASHER

ON SURFACE - ~~BELOW~~ ON

OFFSET Q PAVEMENT ON LT : RT

11.4' TO RT EDGE PAVEMENT

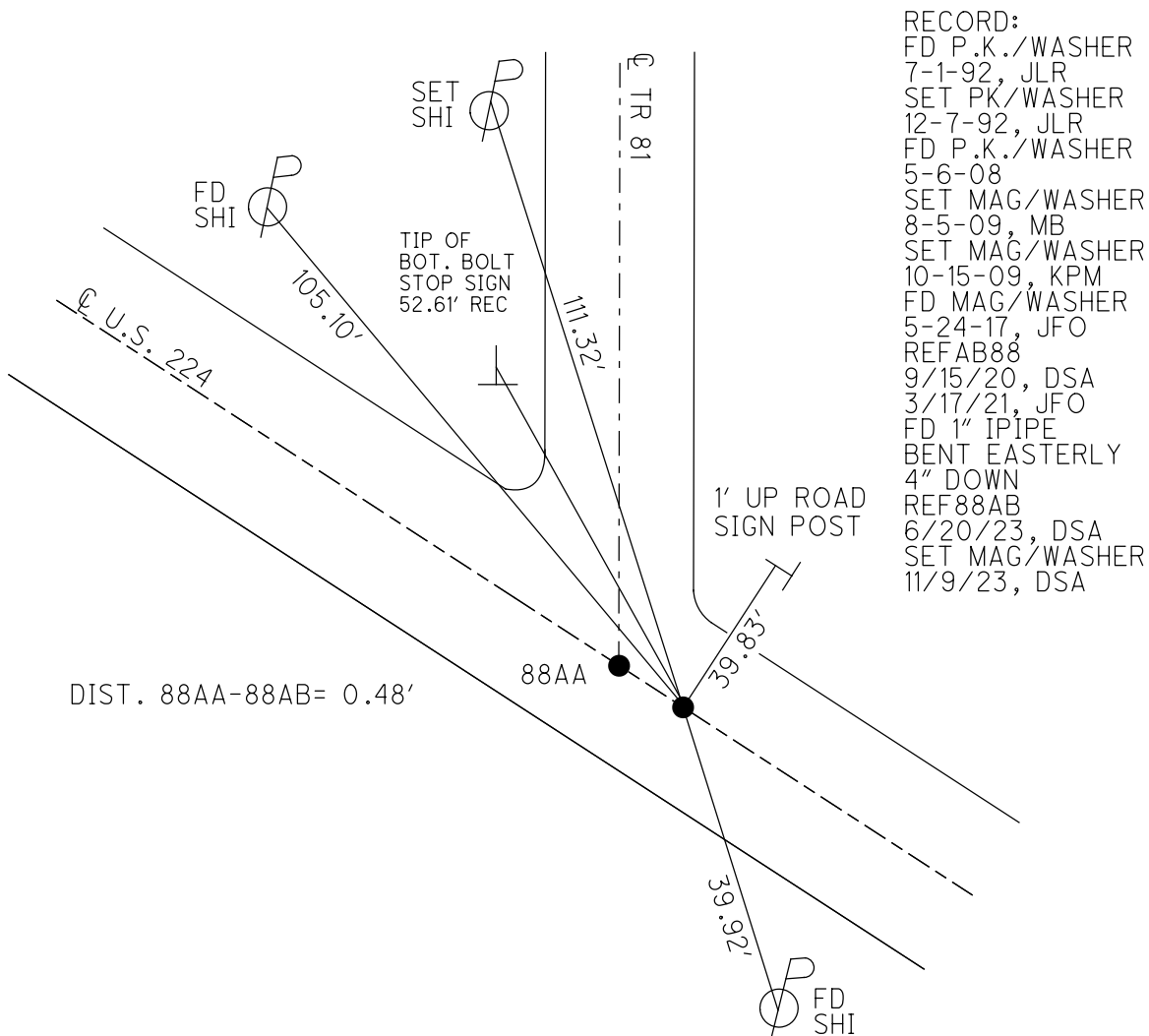
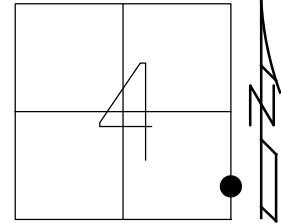
STATION: 1486+47.08

HORZ.DATUM: NAD83 (2011)

GEOID: NAVD88 2018

GRID: NORTHING: 511325.620

EASTING: 1858190.372



- RECORD:  
 FD P.K./WASHER  
 7-1-92, JLR  
 SET PK/WASHER  
 12-7-92, JLR  
 FD P.K./WASHER  
 5-6-08  
 SET MAG/WASHER  
 8-5-09, MB  
 SET MAG/WASHER  
 10-15-09, KPM  
 FD MAG/WASHER  
 5-24-17, JFO  
 REFAB88  
 9/15/20, DSA  
 3/17/21, JFO  
 FD 1" IPIPE  
 BENT EASTERLY  
 4" DOWN  
 REF88AB  
 6/20/23, DSA  
 SET MAG/WASHER  
 11/9/23, DSA

O.D.O.T. DISTRICT 2 SURVEY OFFICE (USE ONLY)

PERSONNEL \_\_\_\_\_

REFERENCE NO. 88 AB

SHEET 2 OF 16

NOTES RHOADES  
 H.C. O'DONNELL  
 R.C. \_\_\_\_\_

DATE 3/17/21  
 WEATHER FAIR  
 TEMP. 50°

ROUTE US 224  
 COUNTY SENECA  
 TOWNSHIP VENICE  
 SECTION 4  
 T 1 N R 17 E

DWG BY NIESE PID PAVE TRAIN

TYPE MONUMENT MAG/WASHER

ON SURFACE - ~~BELOW~~ ON

OFFSET 11.4' TO RT EDGE PAVEMENT

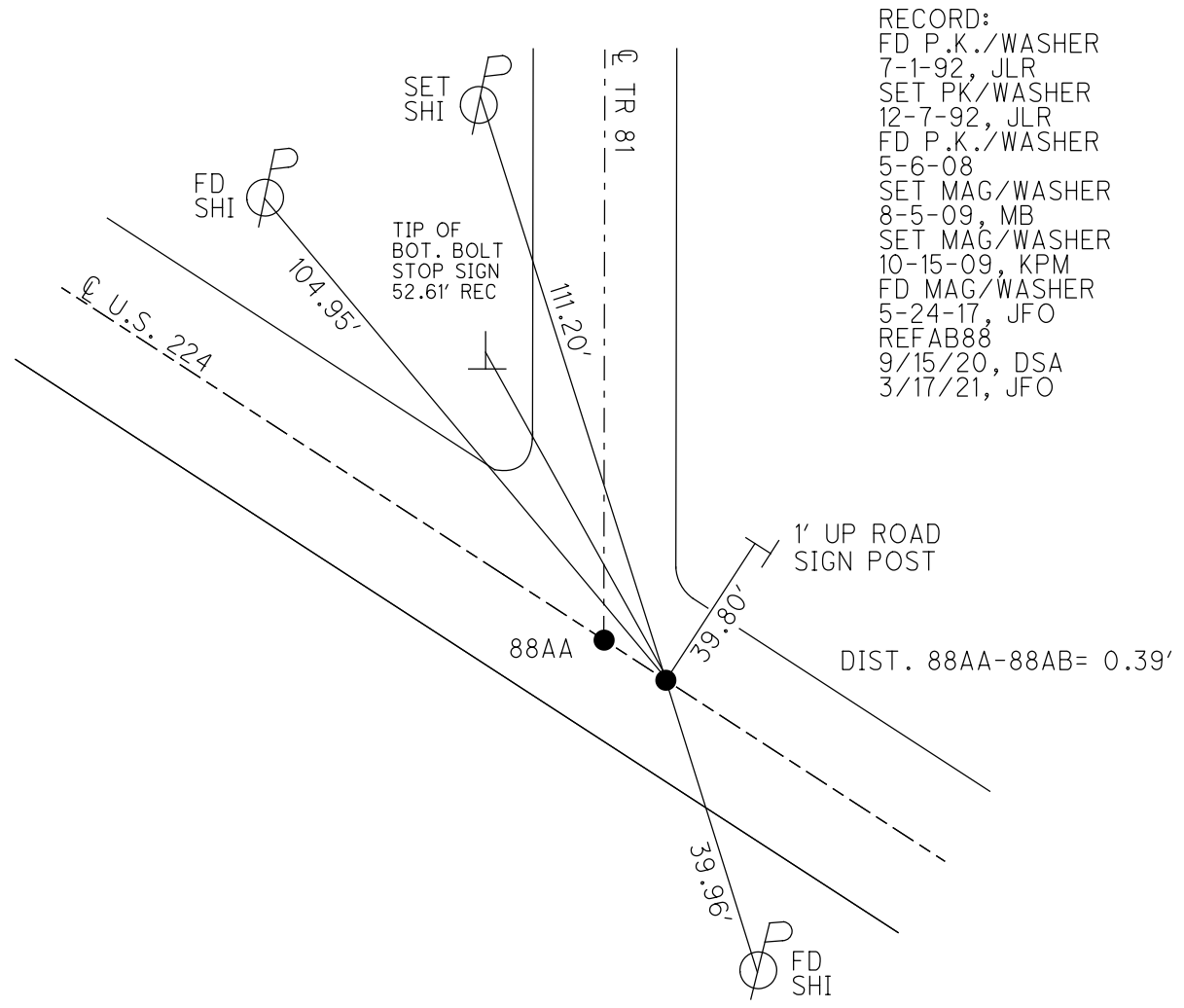
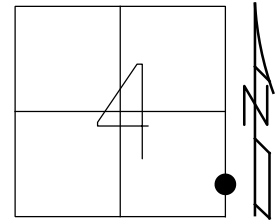
STATION: 1486+47.08

HORIZ.DATUM: NAD83 (2011)

GEOID: 2012A

GRID: NORTHING: 511325.658

EASTING: 1858190.344



- RECORD:  
 FD P.K./WASHER  
 7-1-92, JLR  
 SET PK/WASHER  
 12-7-92, JLR  
 FD P.K./WASHER  
 5-6-08  
 SET MAG/WASHER  
 8-5-09, MB  
 SET MAG/WASHER  
 10-15-09, KPM  
 FD MAG/WASHER  
 5-24-17, JFO  
 REFAB88  
 9/15/20, DSA  
 3/17/21, JFO

O.D.O.T. DISTRICT 2 SURVEY OFFICE (USE ONLY)

PERSONNEL

REFERENCE NO. 88 AB

SHEET 2 OF 16

NOTES RHOADES

DATE 5/24/17

ROUTE US 224

H.C. O'DONNELL

WEATHER CLOUDY

COUNTY SENECA

R.C. POORE

TEMP. 62°

TOWNSHIP VENICE

SECTION 4

DWG BY MILLER

PID 102819

T 1 N R 17 E

TYPE MONUMENT MAG/WASHER

ON SURFACE - ~~BELOW~~ ON

OFFSET CL PAVEMENT ON LT : RT

11.4' TO RT EDGE PAVEMENT

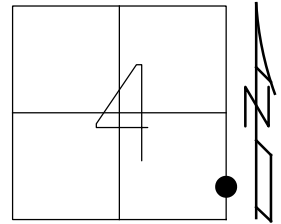
STATION: 1486+47.08

HORZ.DATUM: NAD83 (2011)

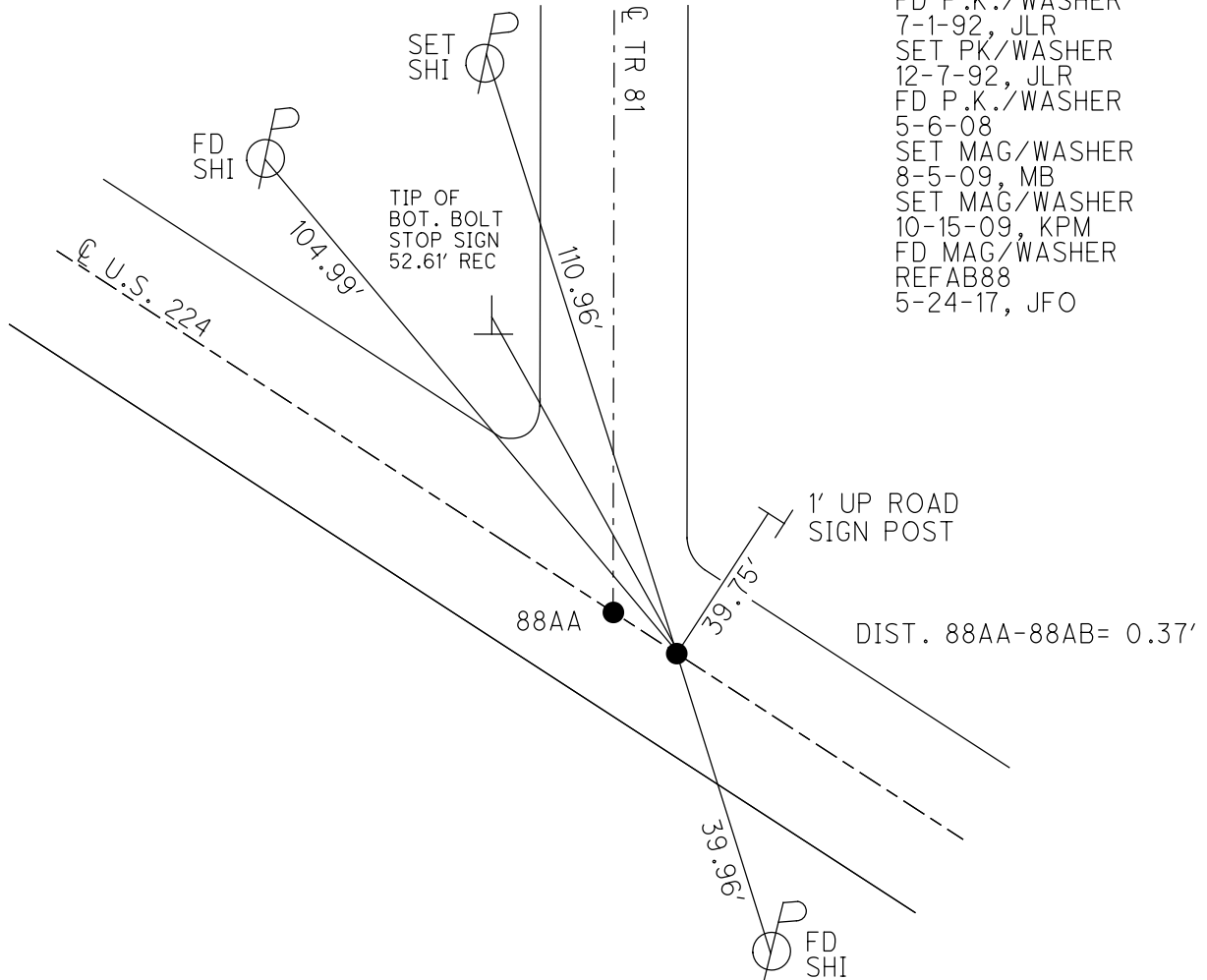
GEOID: NAVD88 2012A

GRID: NORTHING: 511325.658

EASTING: 1858190.344



RECORD:  
 FD P.K./WASHER  
 7-1-92, JLR  
 SET PK/WASHER  
 12-7-92, JLR  
 FD P.K./WASHER  
 5-6-08  
 SET MAG/WASHER  
 8-5-09, MB  
 SET MAG/WASHER  
 10-15-09, KPM  
 FD MAG/WASHER  
 REFAB88  
 5-24-17, JFO



O.D.O.T. DISTRICT 2 SURVEY OFFICE

PERSONNEL

REFERENCE NO. 88 AB

SHEET 34 OF 35

NOTES Moser

DATE 8-5-09

ROUTE U.S. 224

H.C. Moser

WEATHER Fair

COUNTY SENECA

R.C. Pietkowski

TEMP. +40°

TOWNSHIP VENICE

Goldberg

SECTION 4

T. 1 N. R. 17 E

TYPE MONUMENT P.K./WASHER

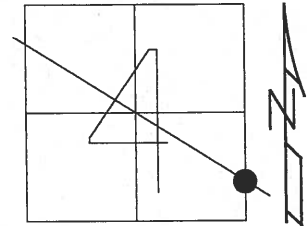
ON SURFACE - ~~BELOW~~ ON

LEFT - ℄ PAV'T - RIGHT ON

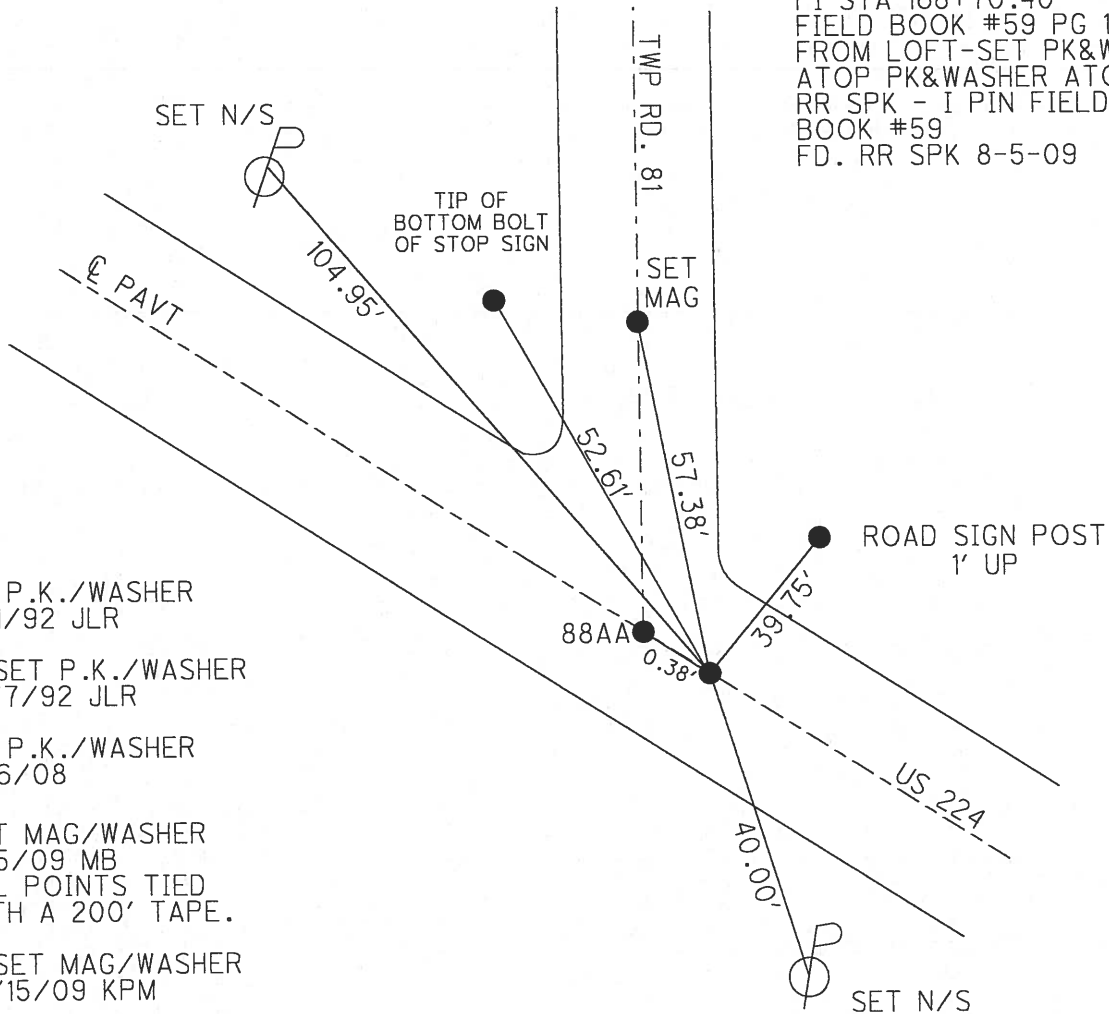
11.4' TO RT. EDGE PAVEMENT

S.L.M. 1486 + 47.08

Grid: Northing: 511325.697 Easting: 1858190.286



RECORD: 11-02-82  
 PI STA 168+70.40  
 FIELD BOOK #59 PG 11  
 FROM LOFT-SET PK&WASHER  
 ATOP PK&WASHER ATOP  
 RR SPK - I PIN FIELD  
 BOOK #59  
 FD. RR SPK 8-5-09



FD P.K./WASHER  
 7/1/92 JLR

RESET P.K./WASHER  
 12/7/92 JLR

FD P.K./WASHER  
 5/6/08

SET MAG/WASHER  
 8/5/09 MB  
 ALL POINTS TIED  
 WITH A 200' TAPE.

RESET MAG/WASHER  
 10/15/09 KPM