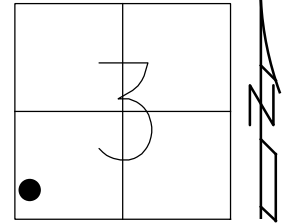


O.D.O.T. DISTRICT 2 SURVEY OFFICE (USE ONLY)

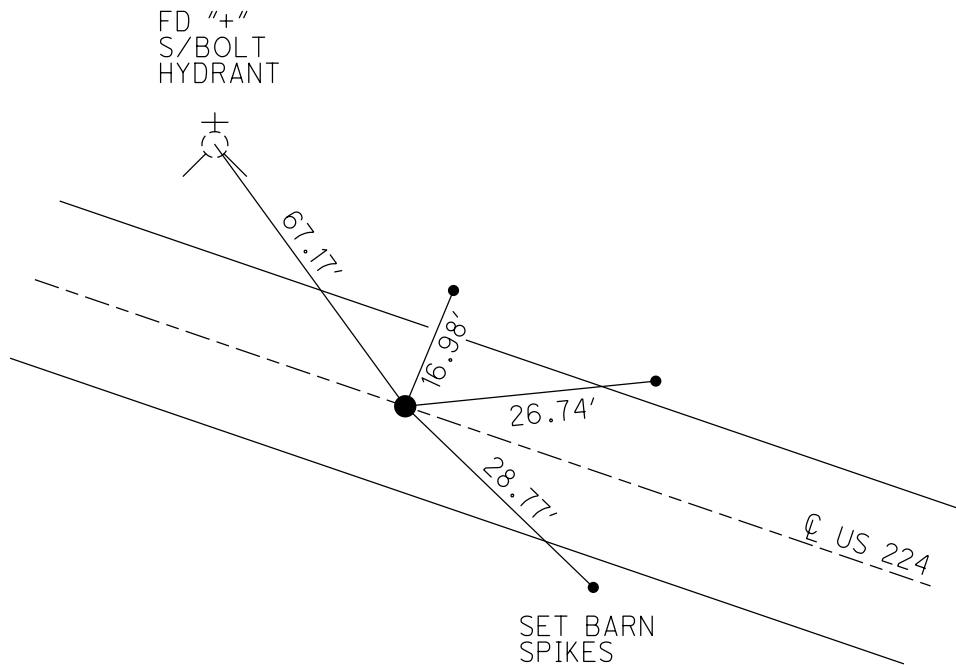
PERSONNEL _____ REFERENCE NO. 88 A SHEET 3 OF 16
 NOTES ASTON DATE 6/16/23 ROUTE US 224
 H.C. NIESE WEATHER CLOUDY COUNTY SENECA
 R.C. BEJARANO TEMP. 62° TOWNSHIP VENICE
 DWG BY RHOADES PID 101217 SECTION 3
 T 1 N R 17 E

TYPE MONUMENT P.K./WASHER
 ON SURFACE - ~~BELOW~~ ON
 OFFSET Q PAVEMENT ON LT : RT
12.1' TO LT EDGE PAVEMENT
 STATION: 1546+10.22



HORZ. DATUM: NAD83 (2011) GEOID: NAVD88 2018
 GRID: NORTHING: 511006.436 EASTING: 1858777.278

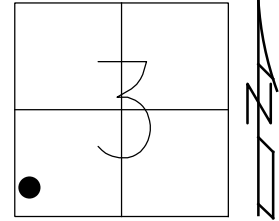
RECORD: P.O.T.
 1931 PLAN
 STA. 229+86
 $\Delta = 00^{\circ}00'$
 FD R.R. SPIKE
 STA. 1546+59
 FD P.K./WASHER
 1/2" DOWN
 7-15-83
 SET P.K./WASHER
 11-3-83
 SET P.K./WASHER
 9-9-93, RCC
 FD P.K./WASHER
 SV200
 10-7-09
 SET P.K./WASHER
 FIN 200
 10-22-10, KPM
 FD P.K./WASHER
 REFA88
 5-24-17
 UNCOVERED
 6-6-18, JFO
 FD P.K./WASHER
 REF88A
 6/16/23, TDN



O.D.O.T. DISTRICT 2 SURVEY OFFICE (USE ONLY)

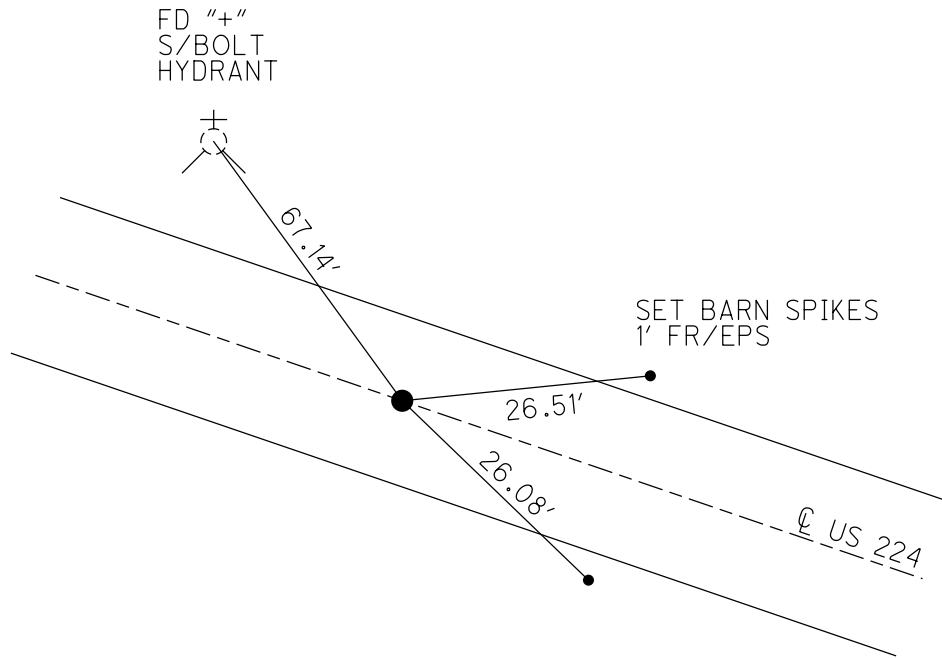
PERSONNEL _____ REFERENCE NO. 88 A SHEET 3 OF 16
 NOTES RHOADES DATE 5/24/17 ROUTE US 224
 H.C. O'DONNELL WEATHER CLOUDY COUNTY SENECA
 R.C. POORE TEMP. 62° TOWNSHIP VENICE
 DWG BY MILLER PID 102819 SECTION 3
 T 1 N R 17 E

TYPE MONUMENT P.K./WASHER
 ON SURFACE - ~~BELOW~~ ON
 OFFSET \odot PAVEMENT ON LT : RT
12.1' TO LT EDGE PAVEMENT
 STATION: 1546+10.22



HORIZ.DATUM: NAD83 (2011) GEOID: NAVD88 2012A
 GRID: NORTHING: 511006.436 EASTING: 1858777.278

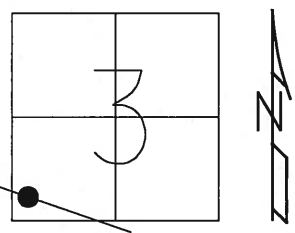
RECORD: P.O.T.
 1931 PLAN
 STA. 229+86
 $\Delta = 00^{\circ}00'$
 FD R.R.SPIKE
 STA. 1546+59
 FD P.K./WASHER
 1/2" DOWN
 7-15-83
 SET P.K./WASHER
 11-3-83
 SET P.K./WASHER
 9-9-93, RCC
 FD P.K./WASHER
 SV200
 10-7-09
 SET P.K./WASHER
 FIN 200
 10-22-10, KPM
 FD P.K./WASHER
 REFA88
 5-24-17
 6-6-18, JFO



O.D.O.T. DISTRICT 2 SURVEY OFFICE (USE ONLY)

PERSONNEL _____ REFERENCE NO. 88 A SHEET 1 OF 13
 NOTES HARBAUGH DATE 8/16/10 ROUTE US 224
 H.C. MOSER WEATHER SUNNY COUNTY SENECA
 R.C. FINGER TEMP. 80° TOWNSHIP VENICE
 _____ SECTION 3
 _____ T 1 N R 17 E

TYPE MONUMENT P.K./WASHER
 ON SURFACE - ~~BELOW~~ ON
 LEFT - ☉ PAV'T - RIGHT ON
12.1' TO LT EDGE PAVEMENT
 S.L.M. 1546+10.22
 GRID: NORTHING: 511006.508 EASTING: 1858777.182



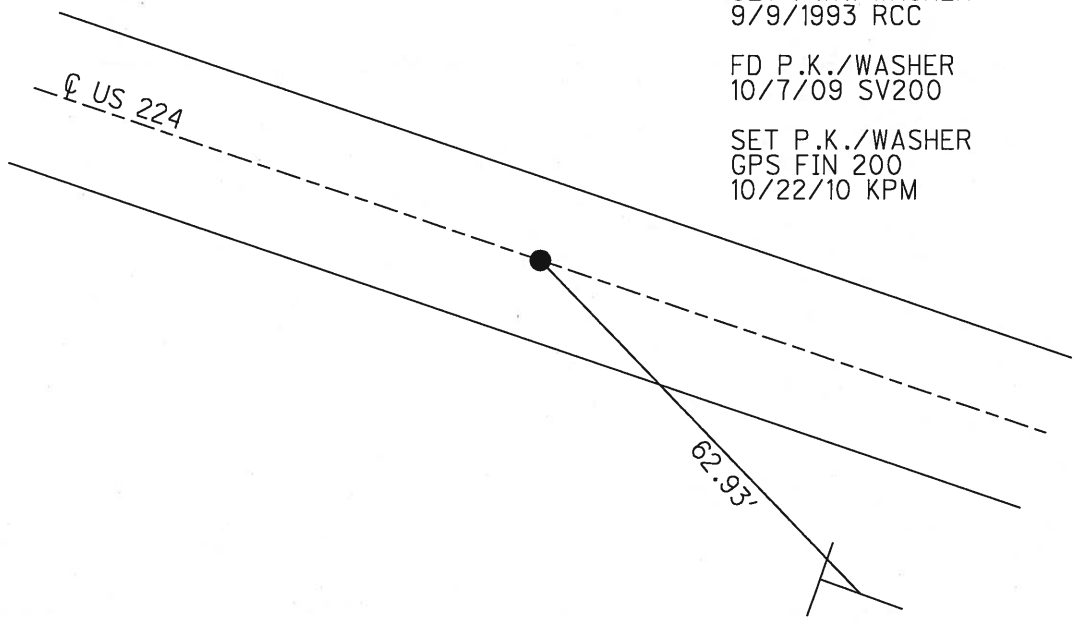
1931 PLAN RECORD:
 P.O.T. STA. 229+86
 $\Delta = 00^\circ 00'$, R.R.SP.K.

 RECORD: 7/15/1983
 STA. 1546+59
 FD P.K./WASHER DEEP
 SET P.K./WASHER 11/3/1983

 SET P.K./WASHER
 9/9/1993 RCC

 FD P.K./WASHER
 10/7/09 SV200

 SET P.K./WASHER
 GPS FIN 200
 10/22/10 KPM



SET NOTCH IN SIGN
 PASS WITH CARE

O.D.O.T. DISTRICT 2 SURVEY OFFICE

PERSONNEL

REFERENCE NO. .88 A

SHEET 35 OF 35

NOTES Moser

DATE 4-9-09

ROUTE U.S. 224

H.C. Moser

WEATHER Fair

COUNTY SENECA

R.C. Pietkowski

TEMP. +40°

TOWNSHIP VENICE

Goldberg

SECTION 3

T 1 N R 17 E

TYPE MONUMENT P.K./WASHER

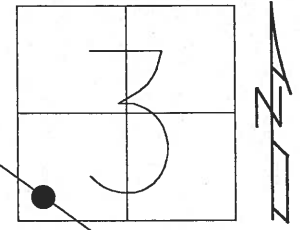
ON SURFACE - ~~BELOW~~ ON

LEFT - ☉ PAV'T - RIGHT ON

12.1' TO LT. EDGE PAVEMENT

S.L.M. 1493 + 15.62

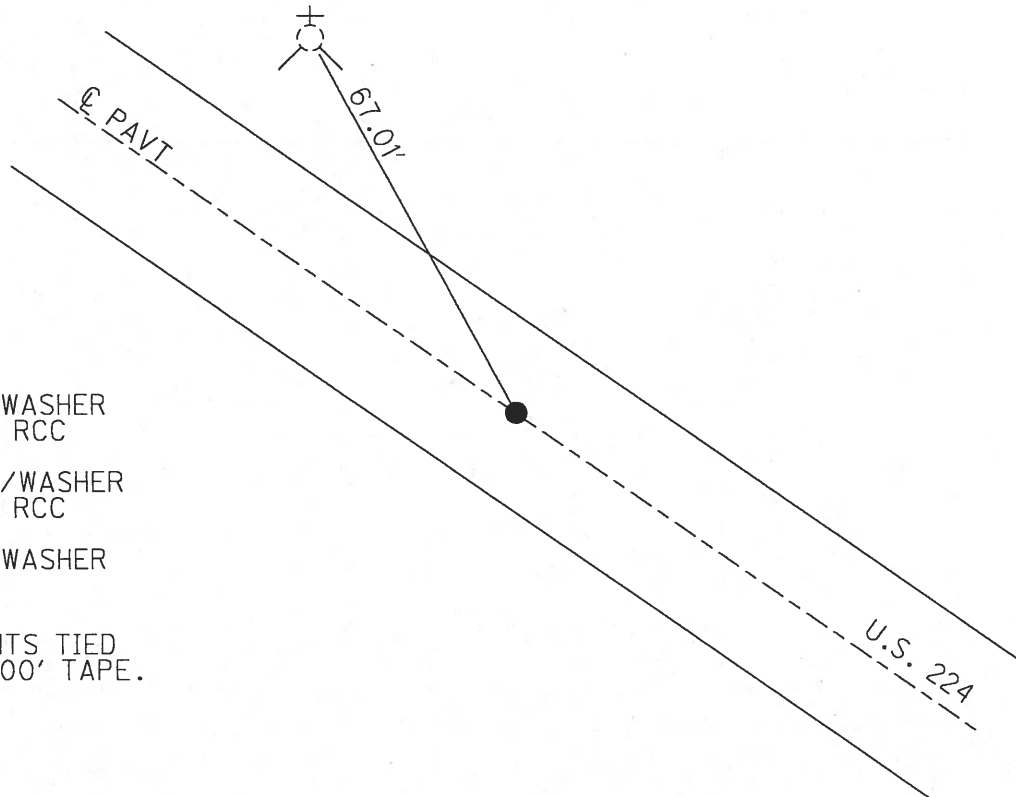
Grid: Northing: 511325.697 Easting: 1858190.286



RECORD: 7-15-1983
STA 1546+59
FD. PK/WASHER 1/2 DEEP
SET PK/WASHER 11-3-1983

1931 PLAN RECORD:
P.O.T. STA. 229+86
 $\Delta = 0^{\circ} 00'$, R.R.SPIKE

SET CROSS CUT
ON SOUTHERLY BOLT
OF HYDRANT



FD P.K./WASHER
7/19/92, RCC

SET P.K./WASHER
12/7/92, RCC

FD P.K./WASHER
5/6/08

ALL POINTS TIED
WITH A 200' TAPE.

O.D.O.T. DISTRICT 2 SURVEY OFFICE

PERSONNEL

REFERENCE NO. 88-A

SHEET 1 OF 21

NOTES CHENEY

H.C. RIPPLE

R.C. BARBOUR

GEYMAN

DATE 7-19-1993

WEATHER CLOUDY

TEMP. 80°

ROUTE # 224

COUNTY SENECA

TOWNSHIP VENICE

SECTION 3

T1N R17E

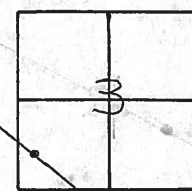
TYPE MONUMENT PK/WASHER

ON SURFACE - ~~BELOW~~ ON

~~LEFT - C~~ PAV'T. - ~~RIGHT~~ ON

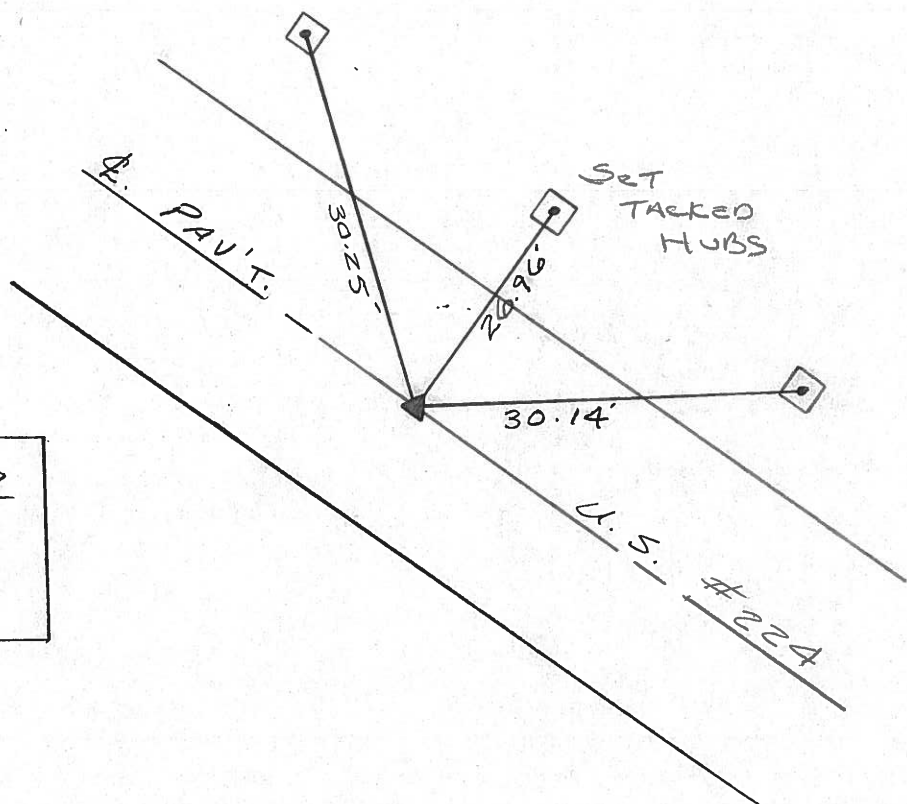
10.5 TO LT. EDGE PAVEMENT

S.L.M. 1492+67



RECORD: 7-15-1983
 STA. 1546+59
 FD. PK/WASHER 1/2 DEEP
 SET PK/WASHER 11-3-1983

SET PK/WASHER
 9-9-1993
 RCC



1931 PLAN RECORD
 P.O.T. STA. 229+86
 $\Delta = 0^{\circ}00'$
 R.R. SPK.

Resurveyed 1993

ODOT. DISTRICT 2 SURVEY OFFICE

SHEET 1 OF

County SENECA S.R. U.S. 224

Date 7/15/83

Township VENICE

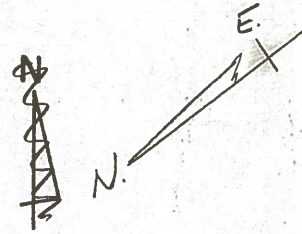
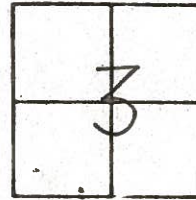
Weather CLEAR

Section 3

Temp. +90°

T N, R E

Personnel HOFFMAN



HOUSEHOLDER

LOEHRKE

BARNHISEL

88-A

1931 PLAN

OLD STA. 229+86

S.L.M. STA. 1546+59

A = 0°-00'

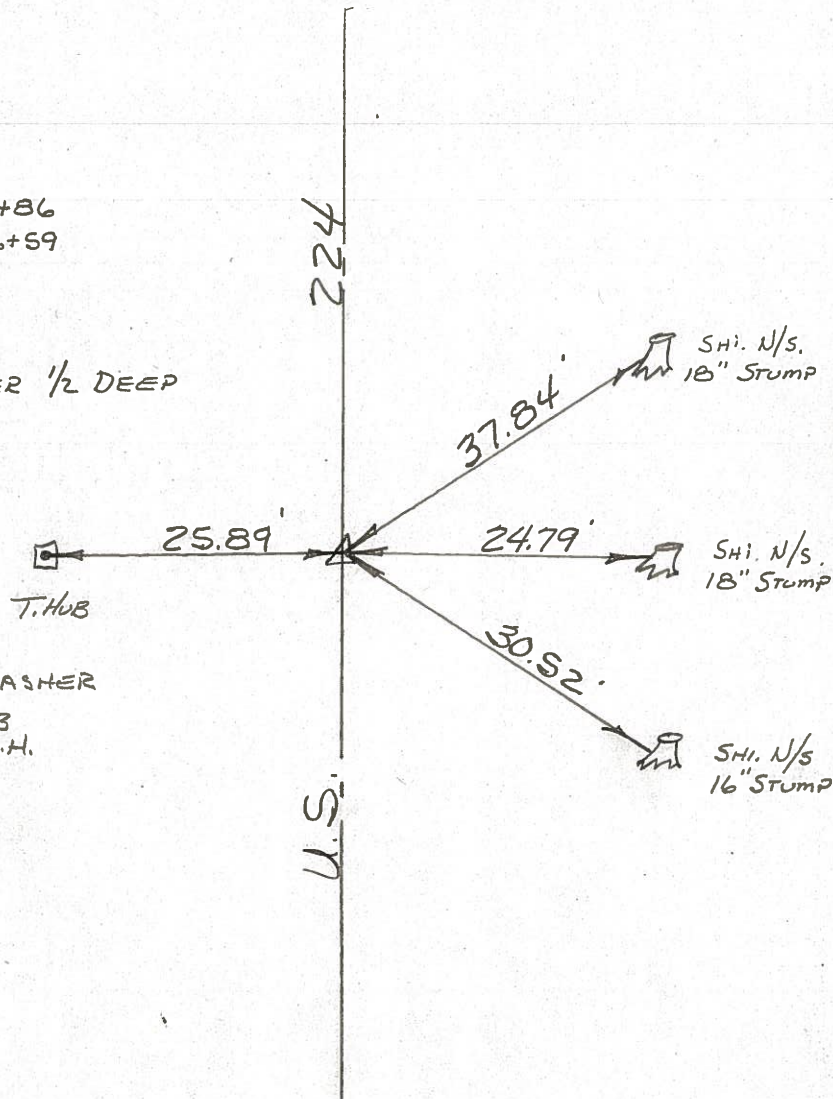
R.R. SPK.

FD. P.K. WASHER 1/2 DEEP

ON & PAVE.

9.9' N.E.P. &

10.1 TO S.E.P.



SET P.K./WASHER

11-3-83

SW.H.

PERSONNEL	TITLE	PERSONNEL	TITLE
Schneider			
Mosser			
Barbour			
Potts			

COUNTY Seneca DATE 4-2-68
 S. R. W.S.#224 WEATHER Fair
 SEC. S.R.#100 to Attica TEMP. 60°

DESCRIPTION Ties for Control Points JOB NO. _____
 LEFT CENTER LINE RIGHT

88-A

P.O.T. ✓
 15434
 R.R. Spk.
 Reset P.K. Nail

8638

24" Dead Elm

10/02/82
 sunny
 60° W. Windy

R/W Mon. NC

TART

88-AA

P.T.
 15394954
 R.R. Spk.
 Reset P.K. Nail
 Washer

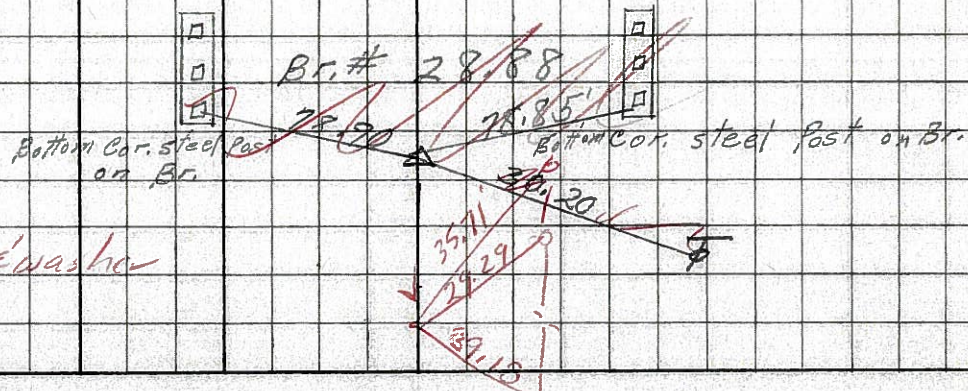
8637

Co. Rd #81 North

87-E

P.T.
 15214
 R.R. Spk.
 Reset ^{boat} small spk. Washer

8636



5/25/82
 overcast

PERSONNEL TITLE PERSONNEL TITLE

COUNTY Seneca DATE 1-12-66

S. R. U. S. # 224 WEATHER

SEC. TEMP.

DESCRIPTION S.R. # 19 - Attica

JOB NO.

LEFT

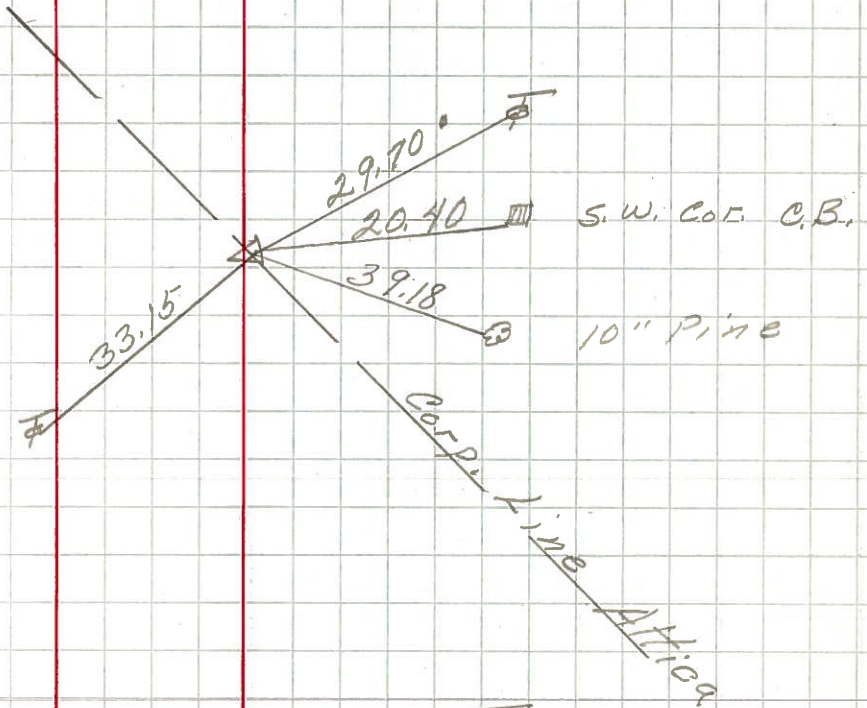
CENTER LINE

RIGHT

89

245+40.3
Δ = 3° 49' Lt.
R.R. spk.

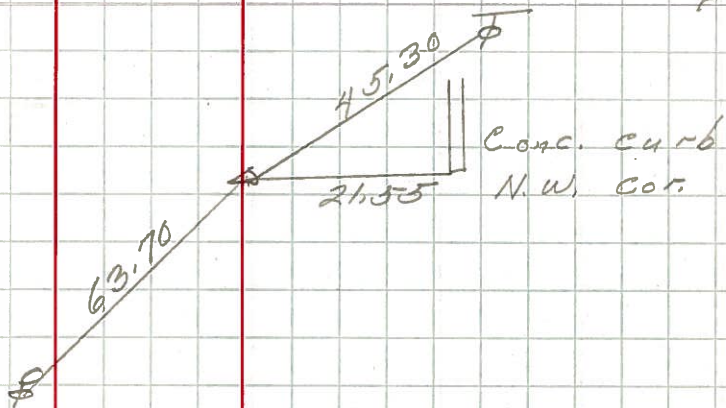
202



88-C

241+99.6
Δ = 0° 08' Lt.
R.R. spk.

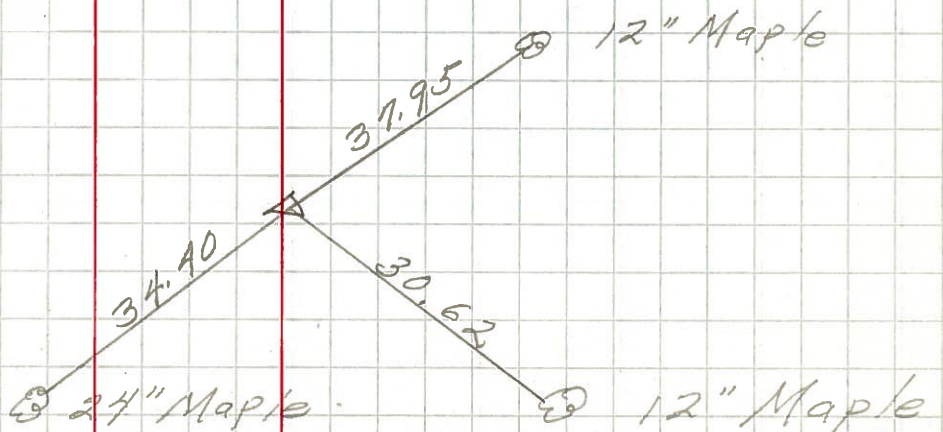
201



88-A

229+86
Δ = 0° 0'
R.R. spk.

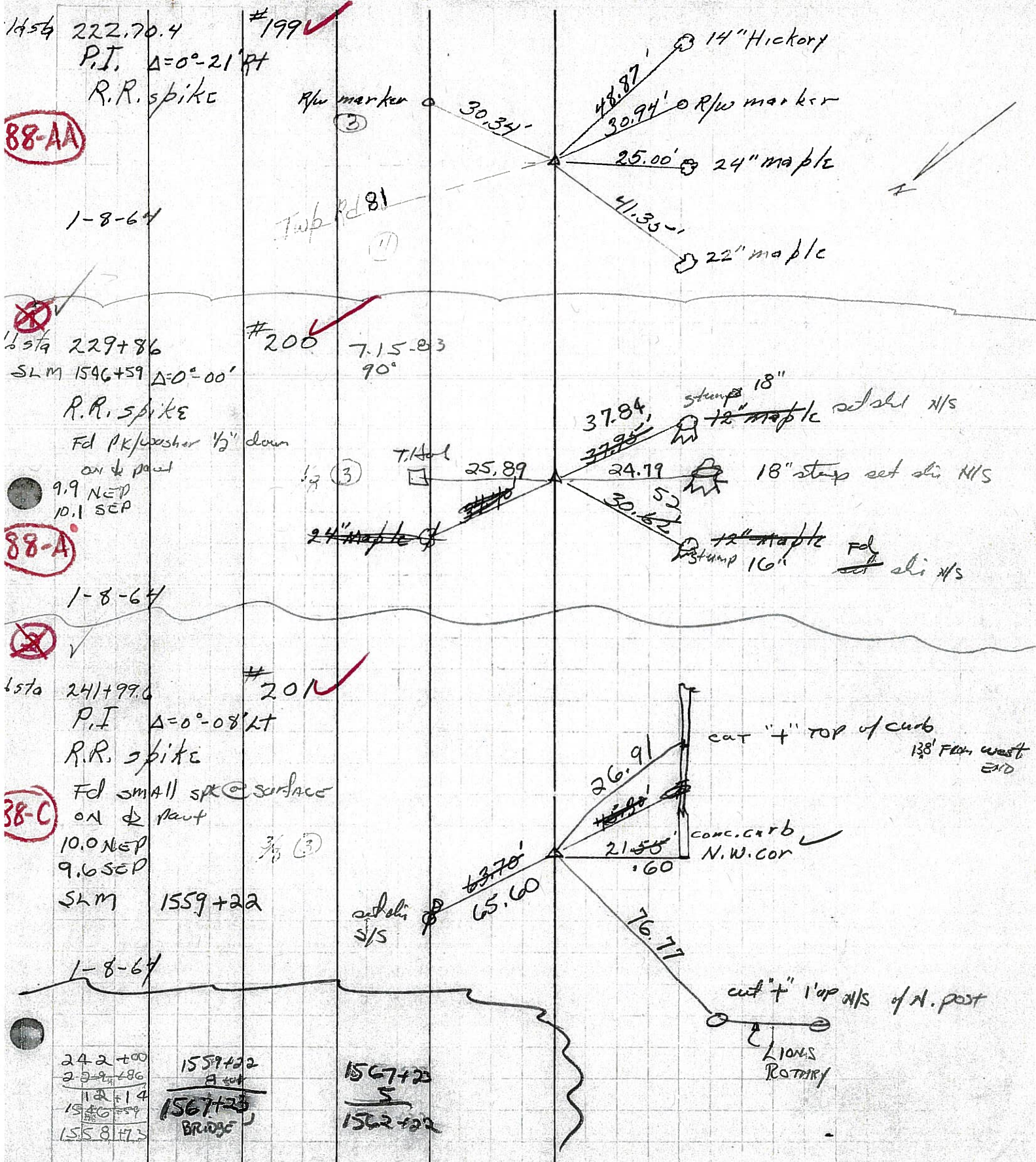
200



PERSONNEL	TITLE	PERSONNEL	TITLE
KRABILL			
Dowd			
Brooks			

COUNTY SENECA DATE _____
 S. R. U.S. 224 WEATHER _____
 SEC. _____ TEMP. _____

DESCRIPTION LEFT CENTER LINE RIGHT JOB NO.



88-AA

88-A

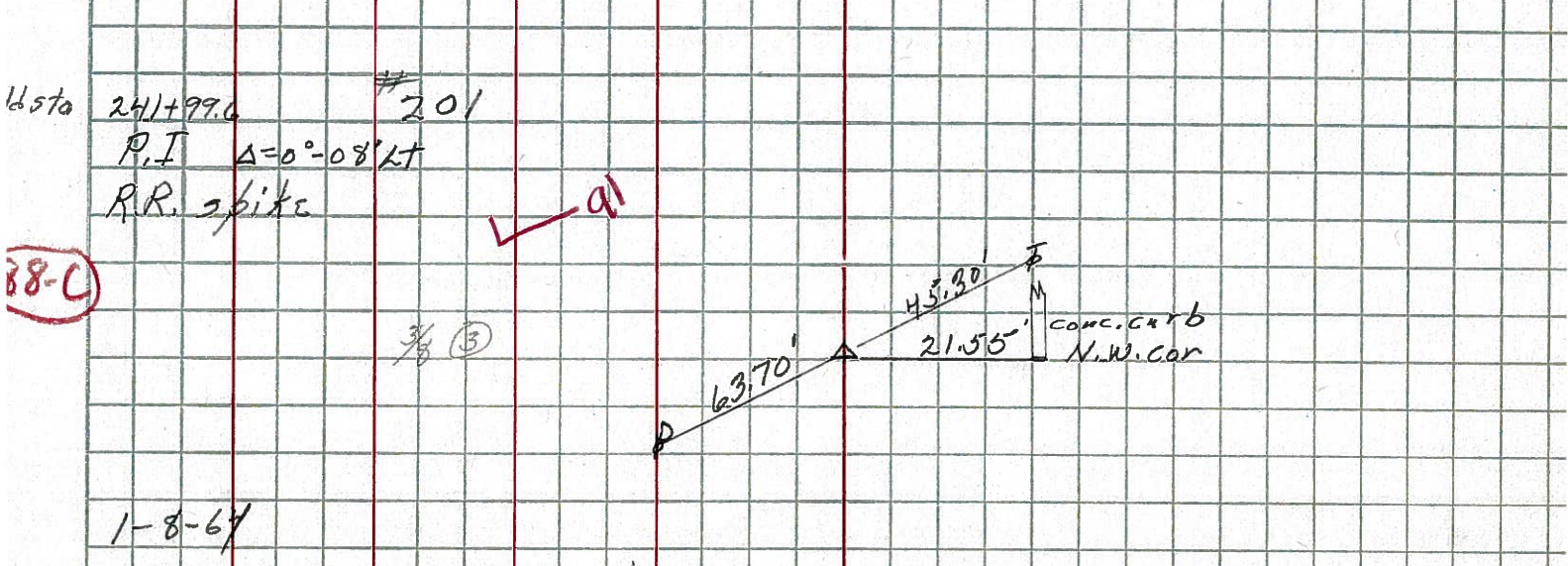
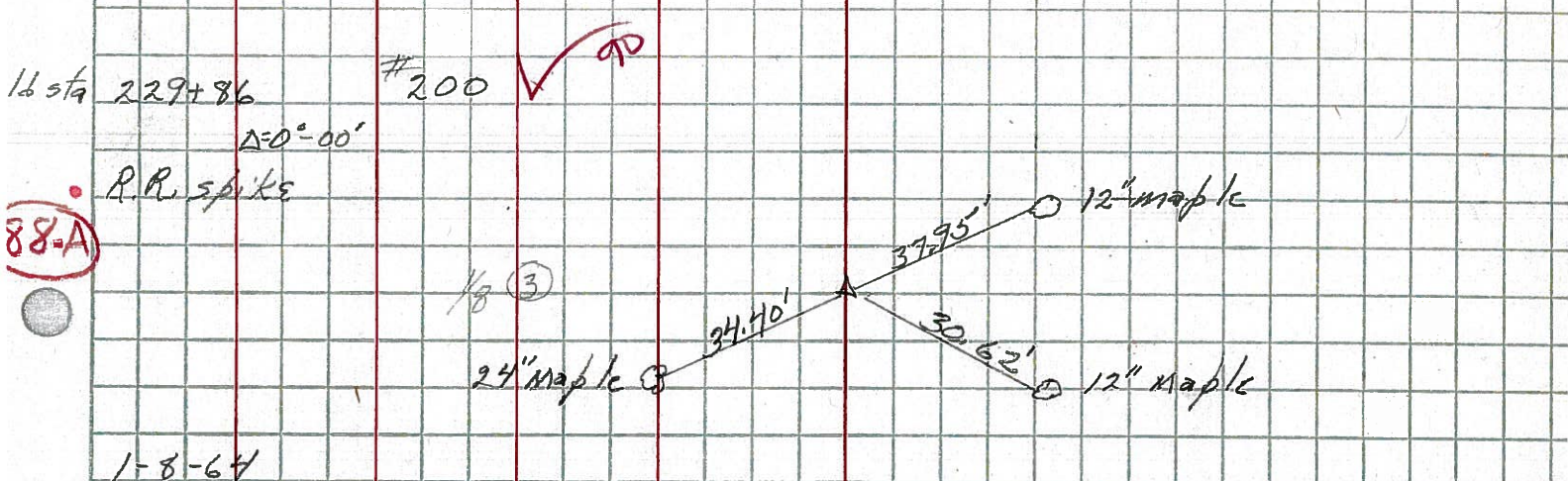
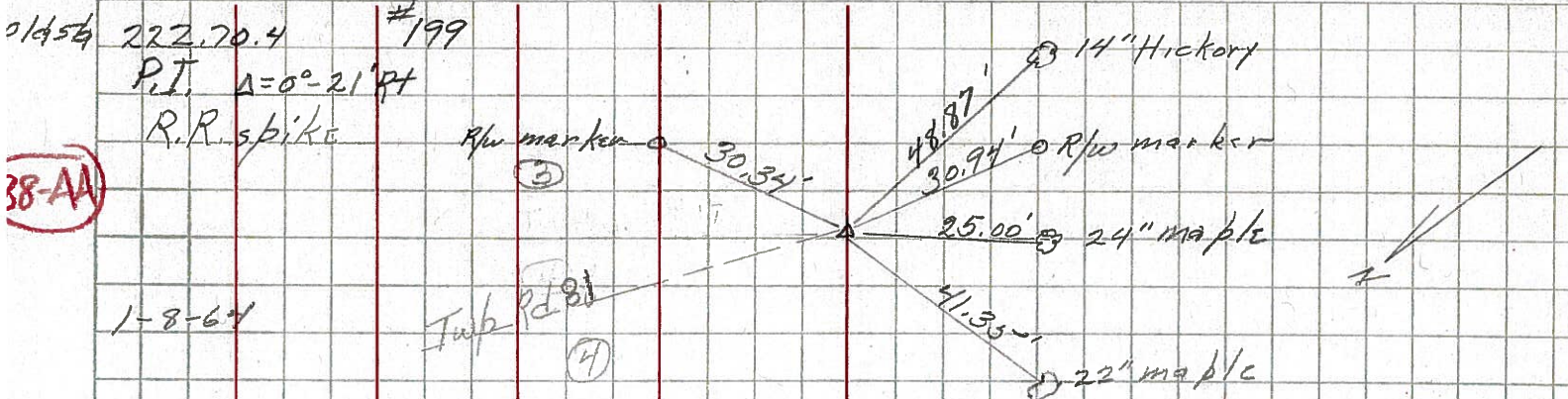
88-A

88-C

242+00	1559+22	1567+22
229+86	BRIDGE	5
112+14		1562+22
1559+59		
1558+73		

PERSONNEL	TITLE	PERSONNEL	TITLE	COUNTY	DATE
Krab, LL					
Towaleski					
Brooks				S. R.	WEATHER
				SEC.	TEMP.

DESCRIPTION	LEFT	CENTER LINE	RIGHT	JOB NO.
-------------	------	-------------	-------	---------



PERSONNEL TITLE PERSONNEL TITLE

COUNTY Seneca

DATE 10-11-49

S. R. #224

WEATHER

SEC. G-D-F-E

TEMP.

DESCRIPTION S.H. #272

LEFT

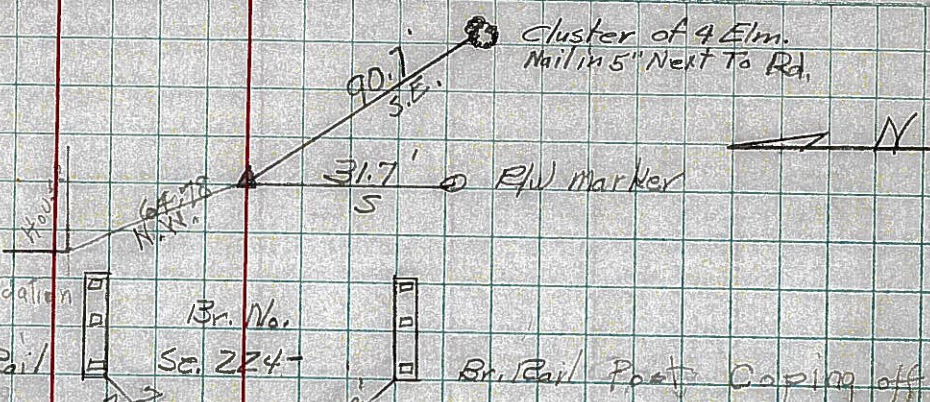
CENTER LINE

RIGHT

JOB NO.

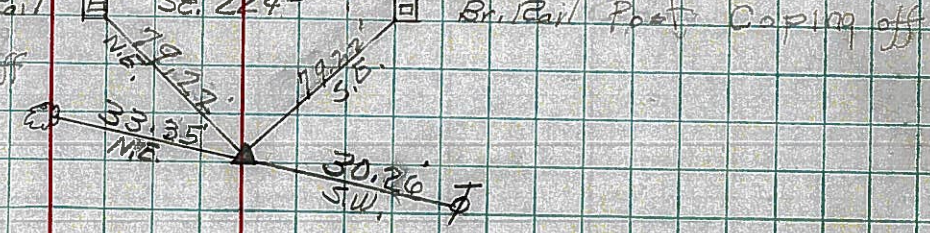
87-C

207.71 0
15403.2
Sta. 192+67.8
Δ = 0°-16' Lt.
R.R. Spike on & R/W
6-26-59
8-10-59 Reset #197



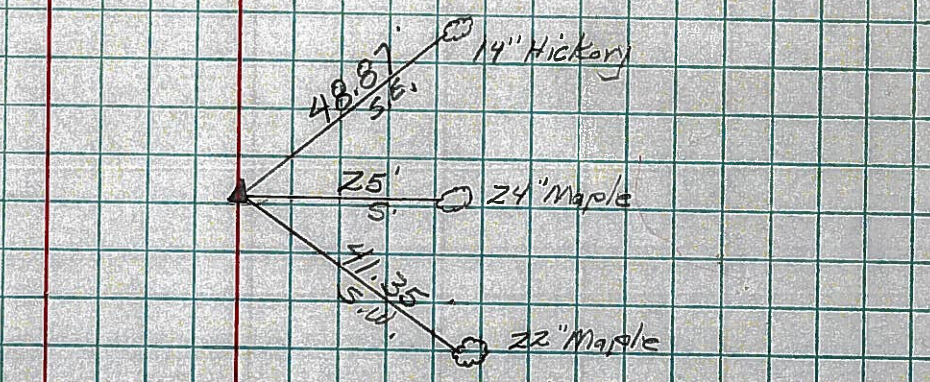
87-E

Sta 207+71
Δ = 0°-18' Lt.
R.R. Spike on & R/W
6-26-59
8-10-59 Reset #198



88-AA

Sta. 222+70.4
Δ = 0°-21' Rt.
R.R. Spike on & R/W
6-26-59
8-10-59 Reset #199



88-A

Sta. 229+86
Δ = 0°-0'
R.R. Spike on & R/W
6-26-59
Re-set #200
8-10-59

