

O.D.O.T. DISTRICT 2 SURVEY OFFICE (USE ONLY)

PERSONNEL

REFERENCE NO. 88 C

SHEET 4 OF 16

NOTES RHOADES

DATE 5/24/17

ROUTE US 224

H.C. O'DONNELL

WEATHER CLOUDY

COUNTY SENECA

R.C. POORE

TEMP. 62°

TOWNSHIP VENICE

SECTION 3

DWG BY MILLER

PID 102819

T 1 N R 17 E

TYPE MONUMENT P.K./WASHER

ON SURFACE - ~~BELOW~~ ON

OFFSET Q PAVEMENT ON LT : RT

11.5' TO RT EDGE PAVEMENT

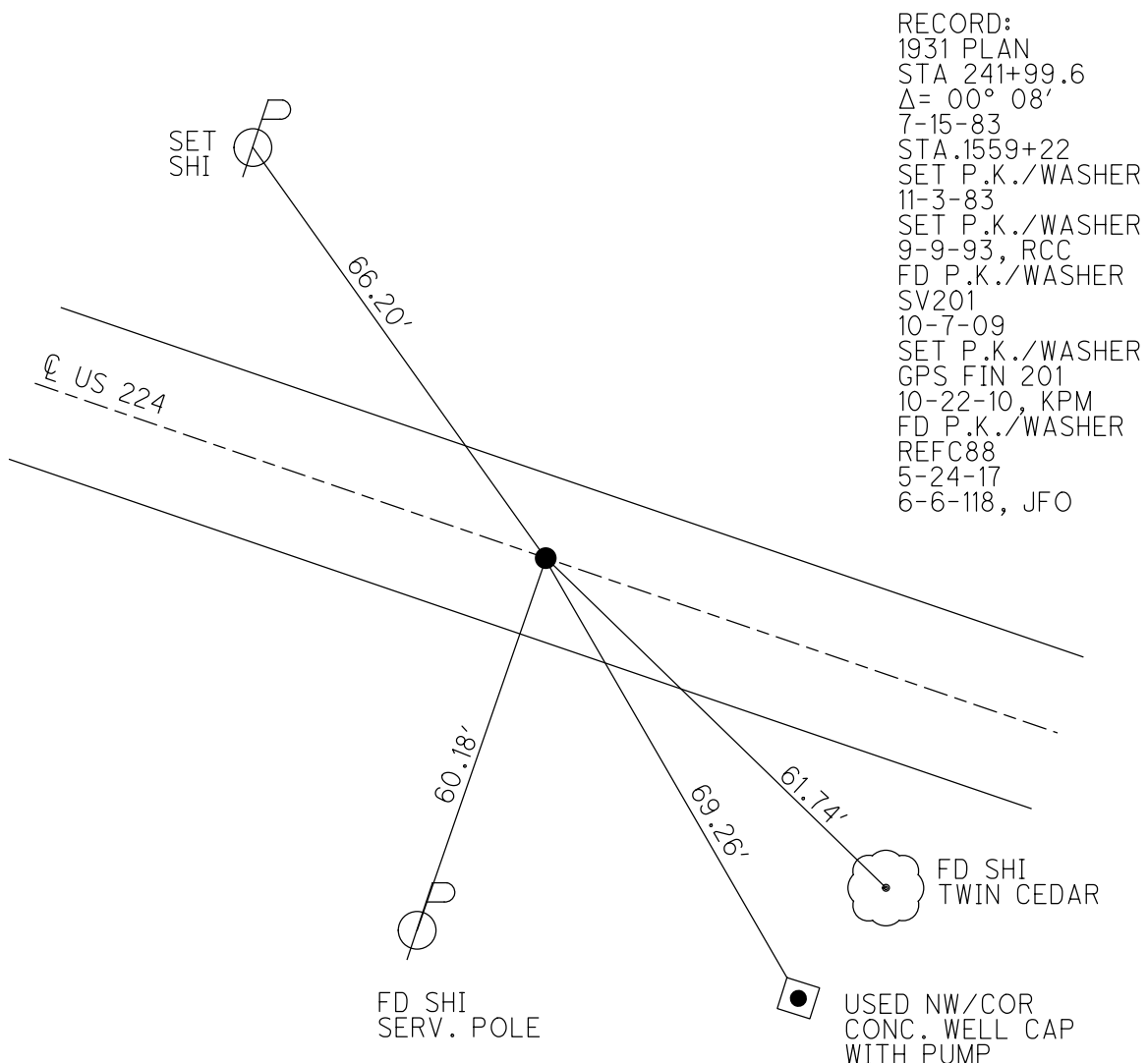
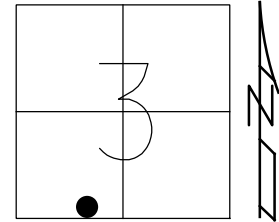
STATION: 1558+69.33

HORZ.DATUM: NAD83 (2011)

GEOID: NAVD88 2012A

GRID: NORTHING: 510406.768

EASTING: 1859884.377

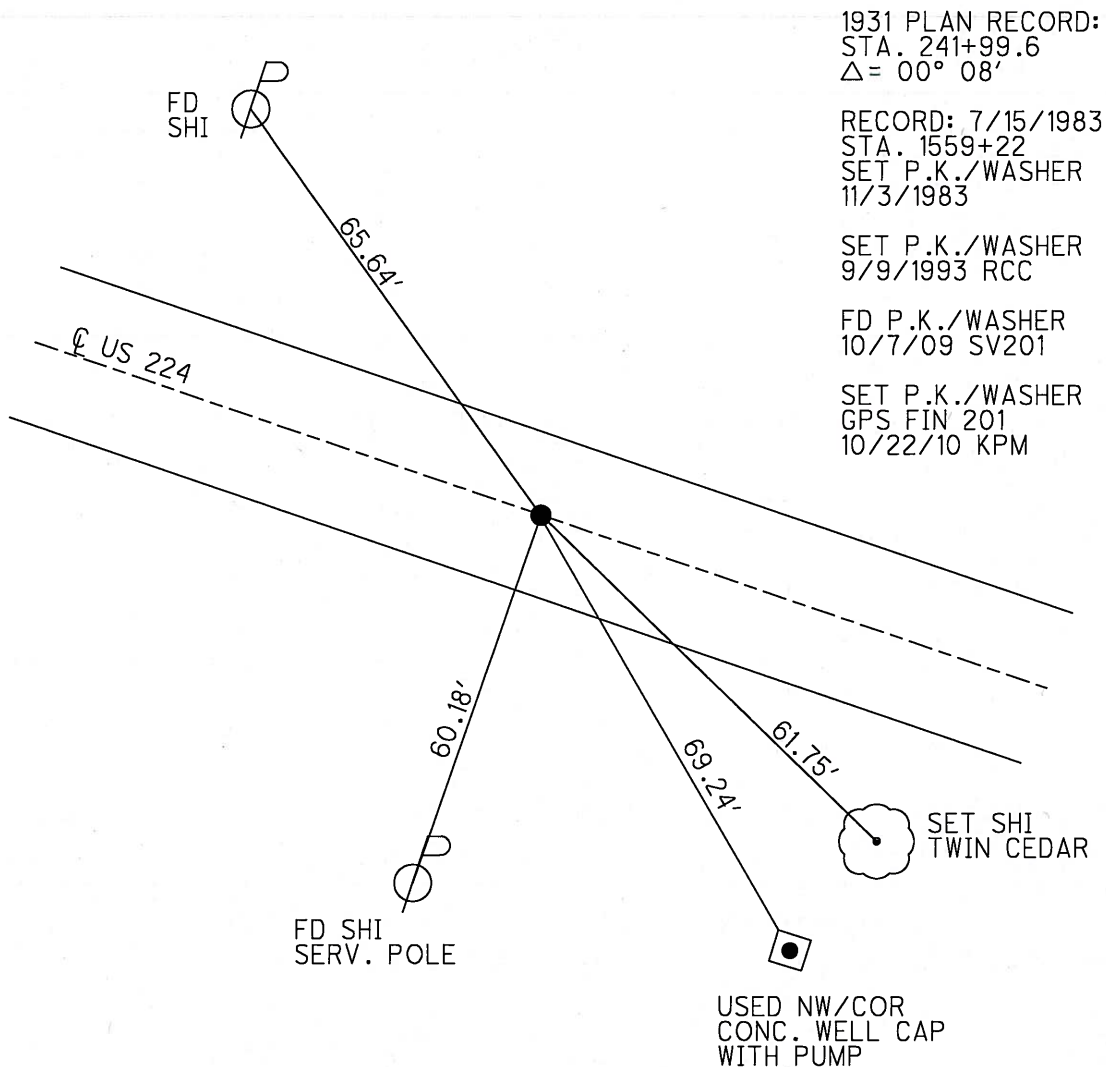
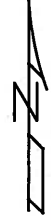
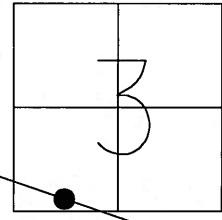


O.D.O.T. DISTRICT 2 SURVEY OFFICE (USE ONLY)

PERSONNEL \_\_\_\_\_ REFERENCE NO. 88 B SHEET 2 OF 13  
 NOTES HARBAUGH DATE 8/16/10 ROUTE US 224  
 H.C. MOSE WEATHER SUNNY COUNTY SENECA  
 R.C. FINGER TEMP. 80° TOWNSHIP VENICE  
 \_\_\_\_\_ SECTION 3  
 \_\_\_\_\_ T 1 N R 17 E

TYPE MONUMENT P.K./WASHER  
 ON SURFACE - ~~BELOW~~ ON  
 LEFT - ☉ PAV'T - RIGHT ON  
11.5' TO RT EDGE PAVEMENT  
 S.L.M. 1558+69.33  
 GRID: NORTHING: 510406.836 EASTING: 1859884.314

**88-C**



# O.D.O.T. DISTRICT 2 SURVEY OFFICE

PERSONNEL

REFERENCE NO. 88-B

SHEET 2 OF 21

NOTES CHENEY

H.C. RIPPLE

R.C. BARBOUR

GEYMAN

DATE 7-19-1993

WEATHER CLOUDY

TEMP. 80°

ROUTE #224

COUNTY SENECA

TOWNSHIP VENICE

SECTION 3

TIN RITE

TYPE MONUMENT PK/WASHER

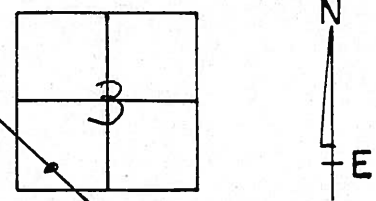
ON SURFACE - ~~BELOW~~ ON

~~LEFT - &~~ PAV'T. - ~~RIGHT~~ ON

11' TO RT. EDGE PAVEMENT

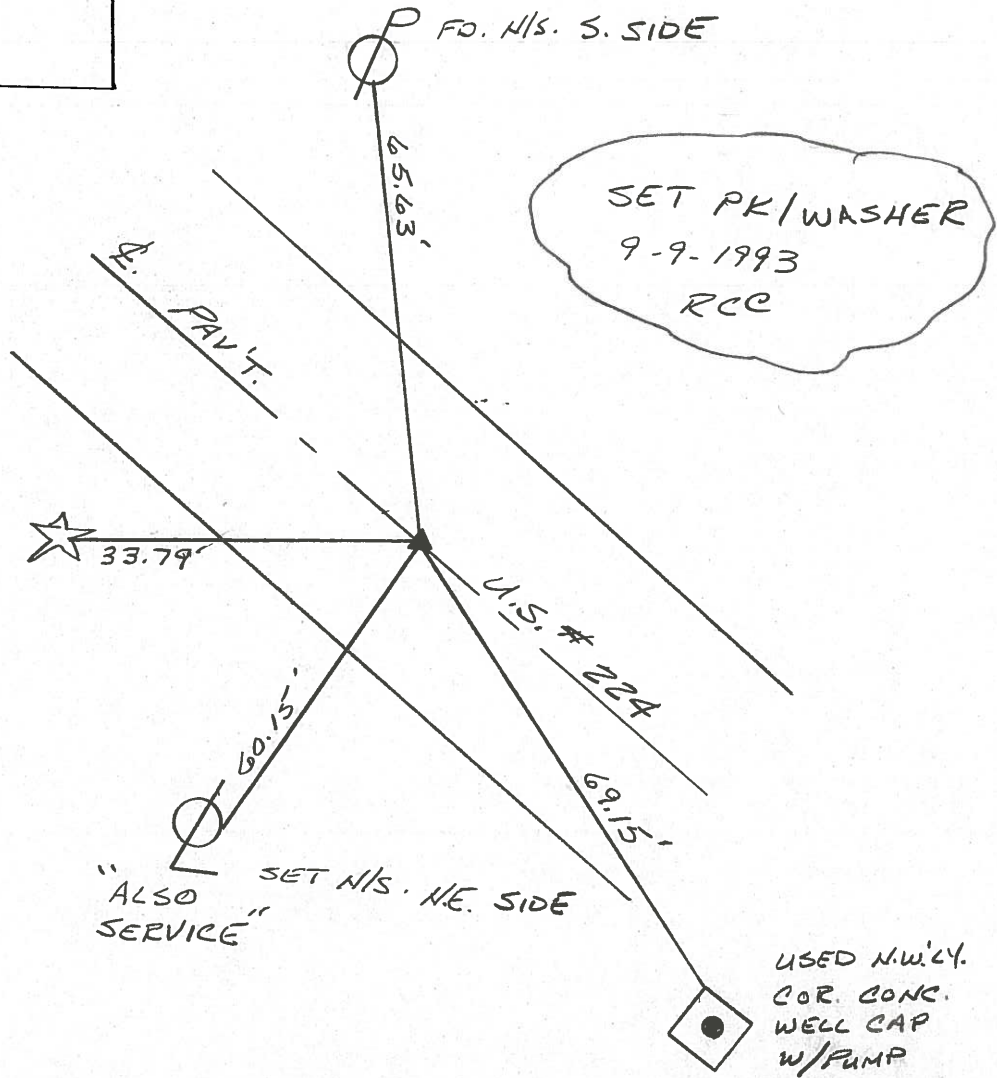
S.L.M. 1505+31

88-C



RECORD: 7-15-1983  
 P.I. STA. 1559+22  
 SET PK/WASHER 11-3-83  
1931 PLAN  
 STA. 241+99.6  
 $\Delta = 00^{\circ}08'LT.$

SET N/S. E.  
SIDE 12" PINE



County SENECA S.R. U.S. 224

Date 7/15/83

Township VENICE

Weather CLEAR

Section 3-10

Temp. +90°

T N, R E

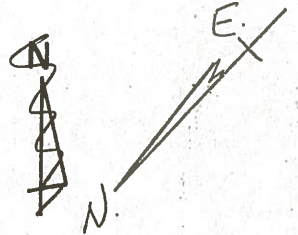
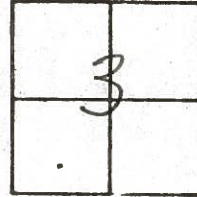
Personnel HOFFMAN

LOEHRKE

HOUSEHOLDER

BARNHISEL

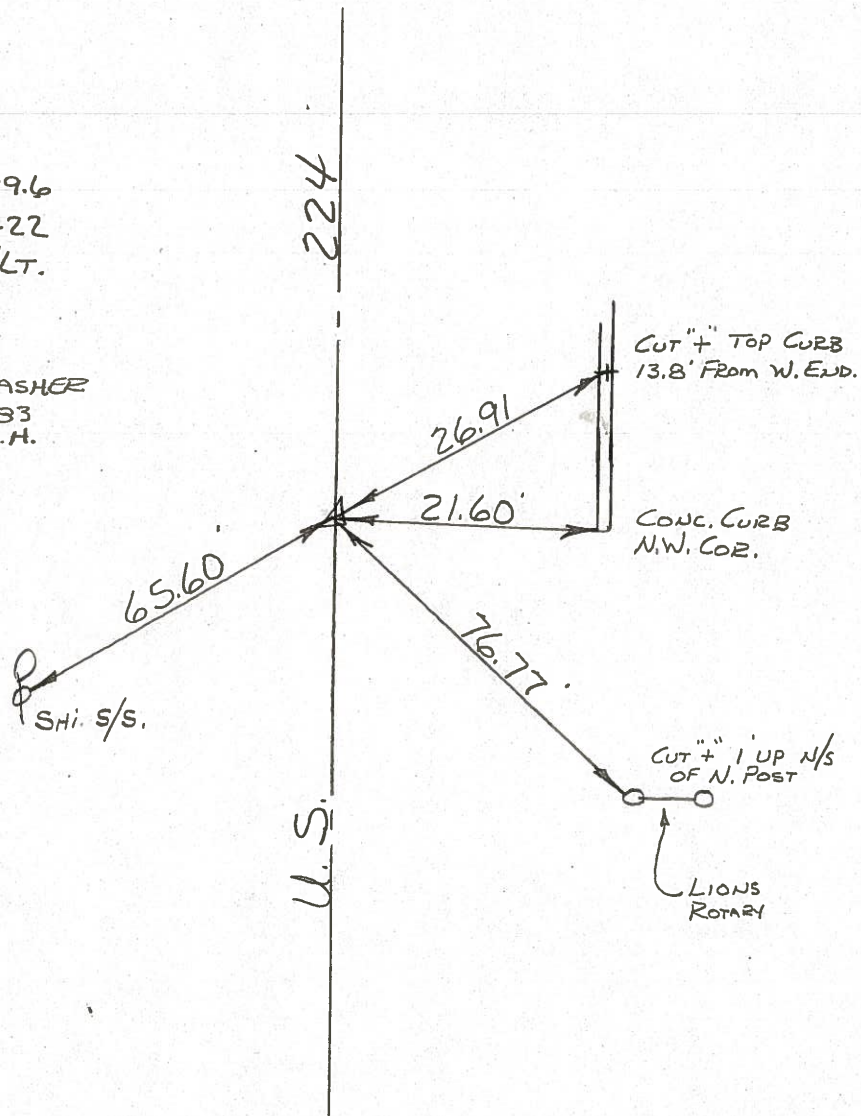
~~88-B~~



88-C

1931 OLD STA. 241+99.6  
PLAN S.L.M. 1559+22  
P.I. Δ = 0°08' LT.

SET P.K./WASHER  
11-3-83  
S.W.H.



PERSONNEL TITLE PERSONNEL TITLE

COUNTY Seneca

DATE 7-18-68  
4-2-68

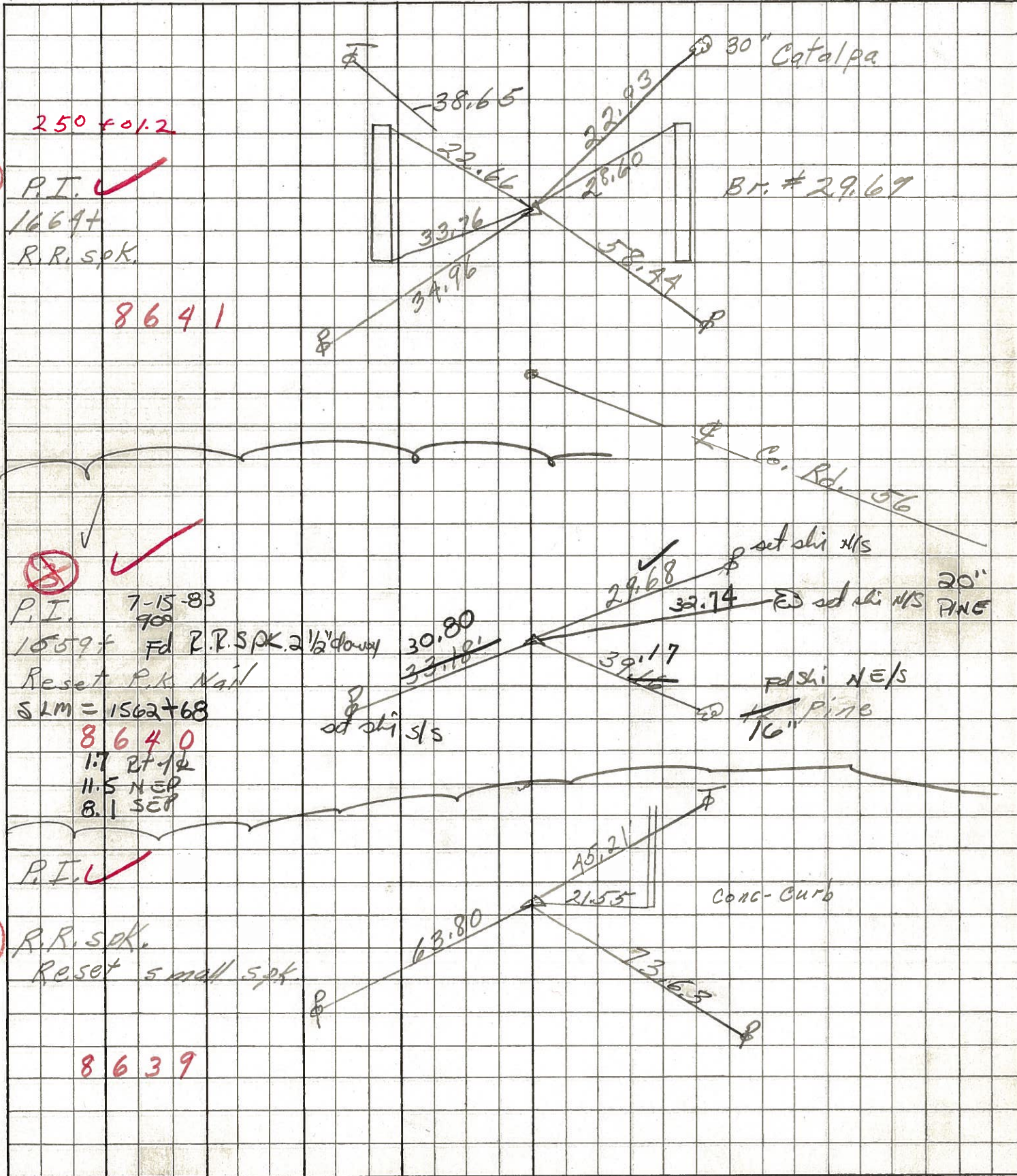
Schneider  
Mosser  
Barbour  
Potts

S. R. U.S. #224 WEATHER Fair

SEC. S.R. #100 to Attica TEMP. 55°

DESCRIPTION Ties for Control Points JOB NO.

LEFT CENTER LINE RIGHT



PERSONNEL TITLE PERSONNEL TITLE

COUNTY Seneca DATE 1-12-66

S. R. U.S. # 224 WEATHER

SEC. TEMP.

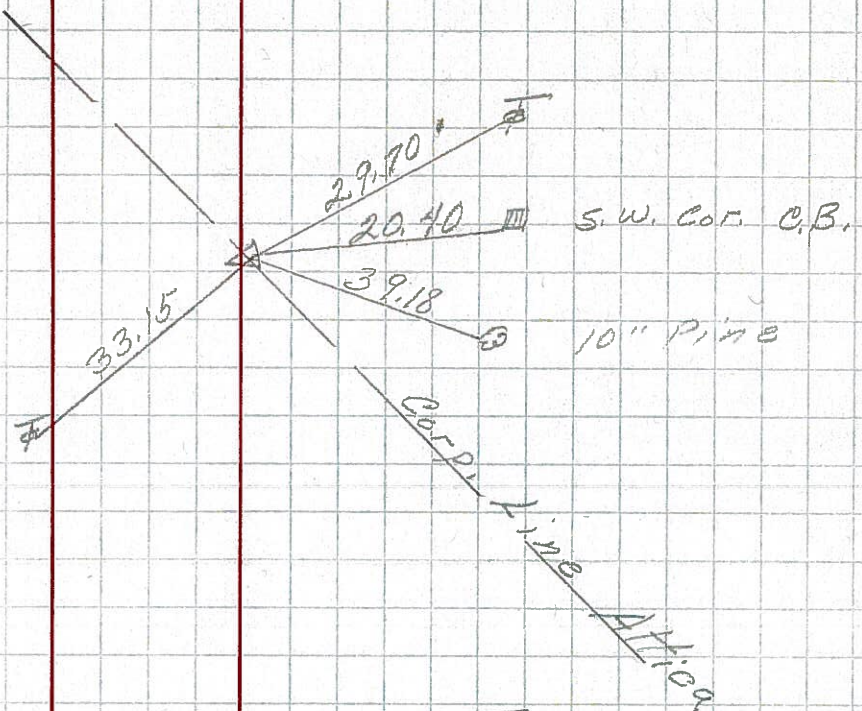
DESCRIPTION S.R. # 19 - Affica JOB NO.

LEFT CENTER LINE RIGHT

89

245+40.3  
Δ = 3° 49' Lt.  
R.R. spk.

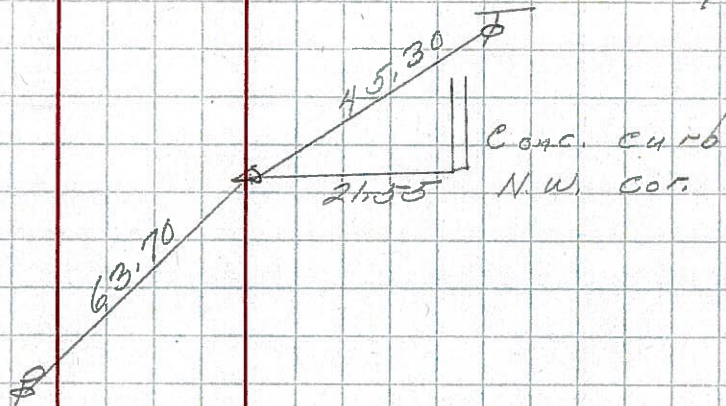
202



88-C

241+99.6  
Δ = 0° 08' Lt.  
R.R. spk.

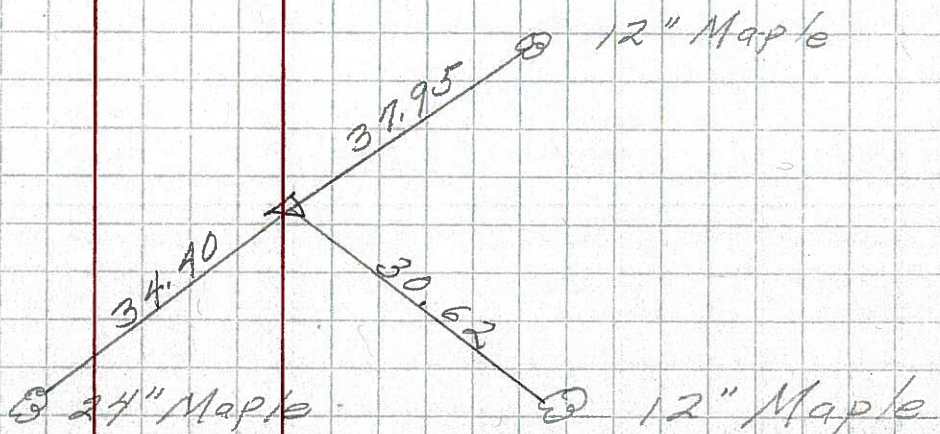
201



88-A

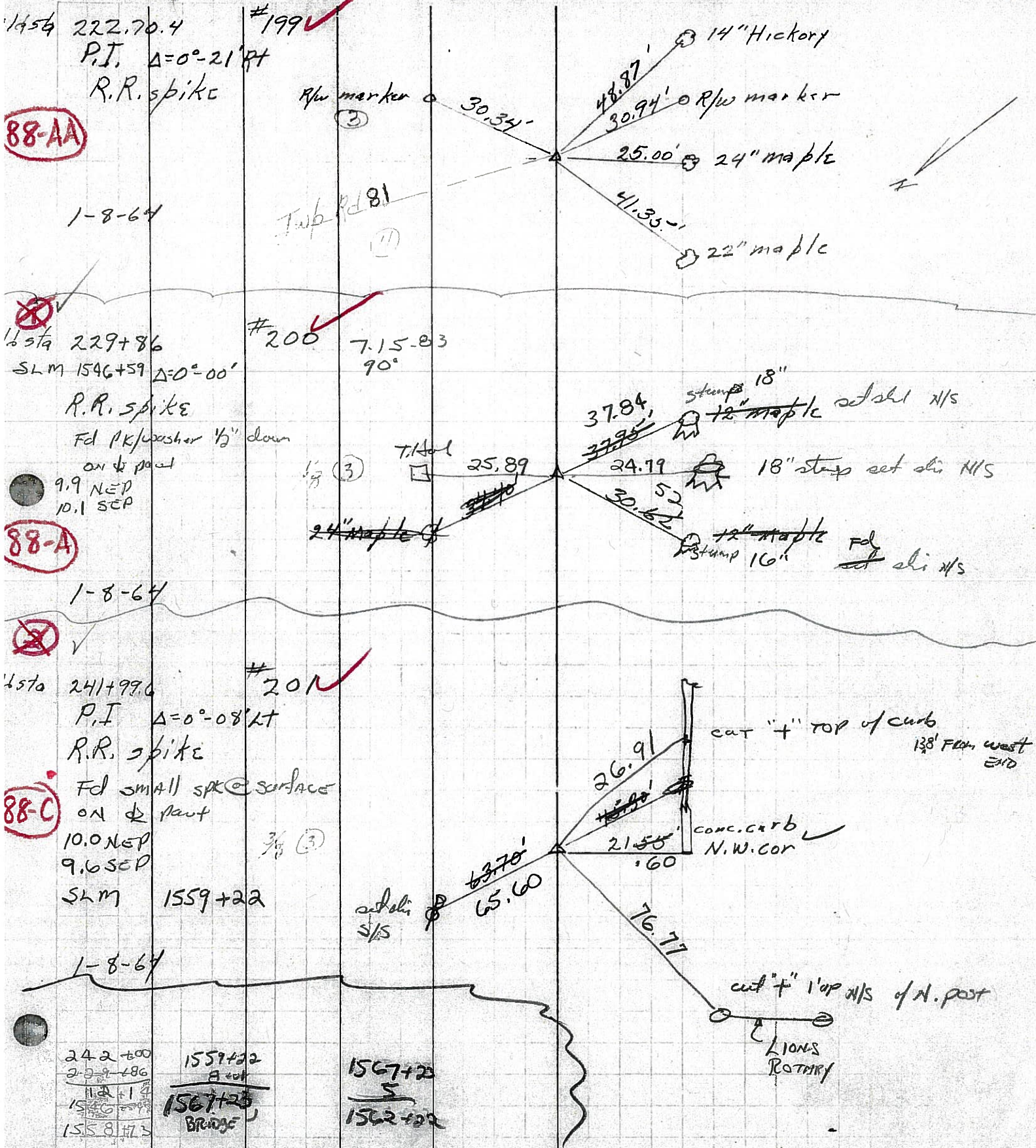
229+86  
Δ = 0° 00'  
R.R. spk.

200



PERSONNEL	TITLE	PERSONNEL	TITLE	COUNTY	DATE
KrabiLL				SENECA	
Dowkes H				S. R. O.S. 224	
Brooks					WEATHER
				SEC	TEMP

DESCRIPTION LEFT CENTER LINE RIGHT JOB NO.



88-AA

88-A

88-C

242+00  
229+86  
1559+22  
1558+75

1559+22  
A cut  
1567+25  
BRIDGE

1567+25  
5  
1562+22

Lions  
Rotary

PERSONNEL TITLE PERSONNEL TITLE

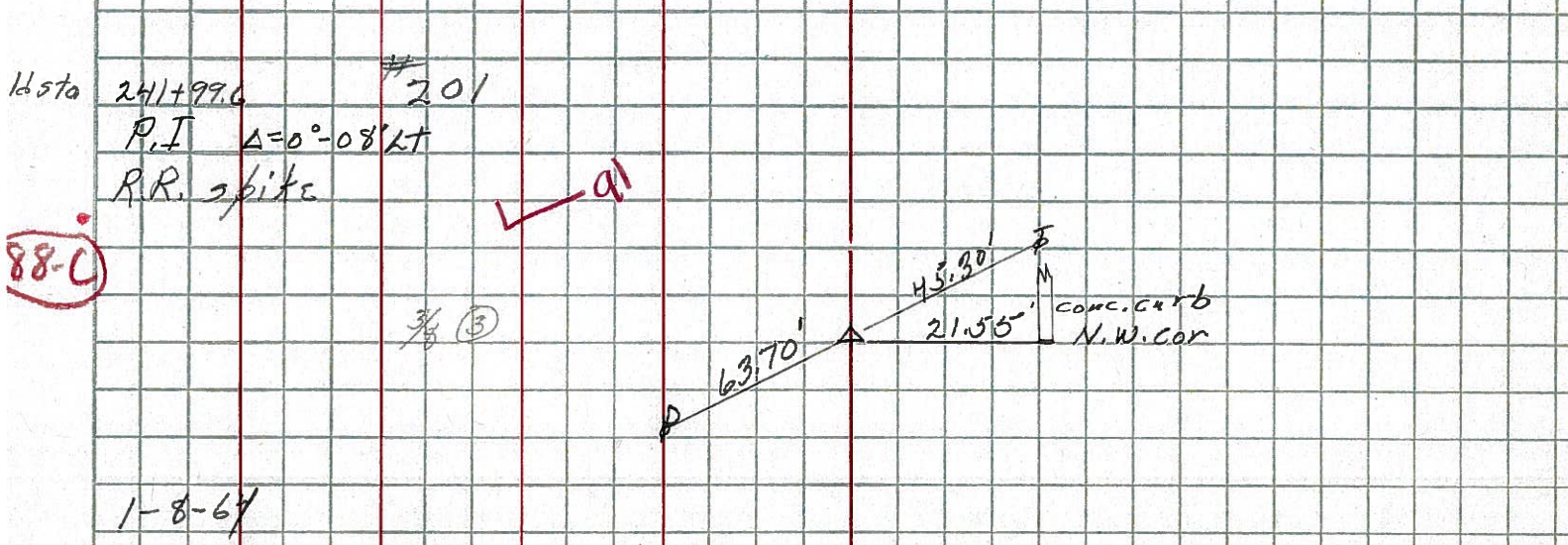
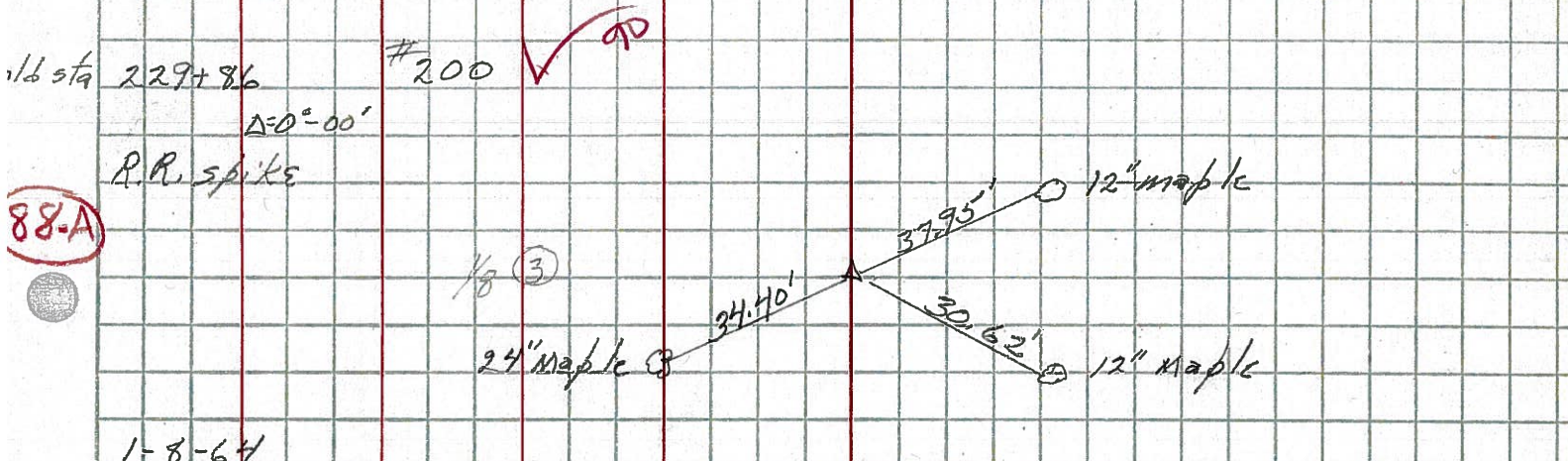
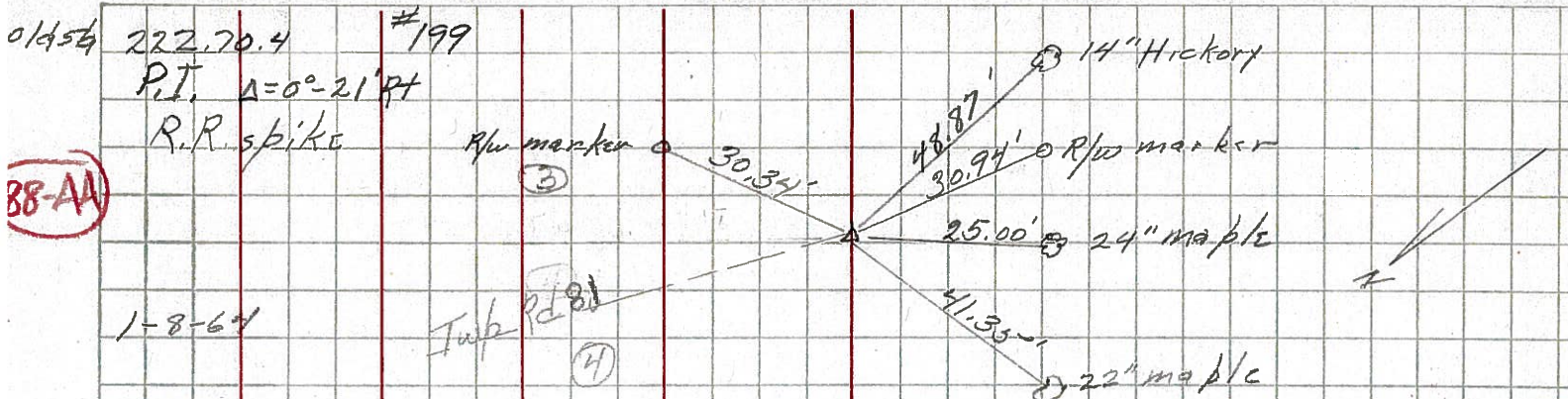
COUNTY DATE

KrabiLL  
Jowleski  
Brooks

S. R. WEATHER

SEC. TEMP.

DESCRIPTION LEFT CENTER LINE RIGHT JOB NO.





PERSONNEL TITLE PERSONNEL TITLE

COUNTY Seneca

DATE 10-11-49

S. R. #224

WEATHER

SEC. G-D-F-E

TEMP.

DESCRIPTION S.H. #272

JOB NO.

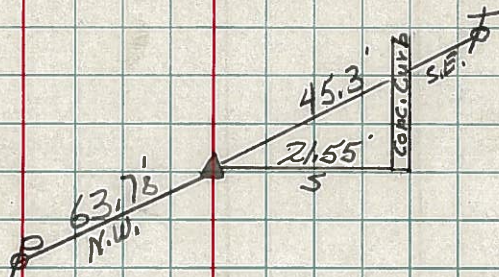
LEFT

CENTER LINE

RIGHT

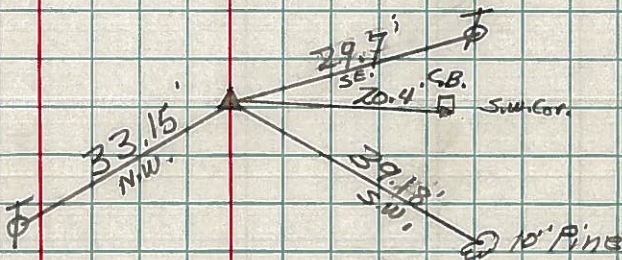
88-C

Sta. 241+99.6  
 $\Delta = 0^{\circ}-08'Lt$   
 R.R. Spike on  $\frac{1}{2}$  E/W  
 6-26-59  
 Reset 8-10-59 #201



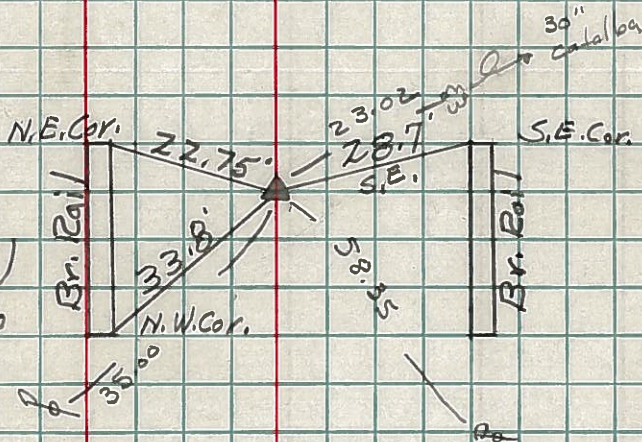
89

Sta. 245+40.3  
 $\Delta = 3^{\circ}-49'Lt$   
 R.R. Spike on  $\frac{1}{2}$  E/W  
 6-26-59  
 Reset 8-10-59 #202



89-B

Sta. 250+01.2  
 $\Delta = 0^{\circ}-0'$   
 R.R. Spike on  $\frac{1}{2}$  E/W  
 End of Sec. F. = 251+00  
 Sec. Attica Part.  
 #203



Set Spike  
 4-22-60

Sta. 251+00  
 Same as 250+01.2 above

S.H. 272 Sec. Attica Part.