

O.D.O.T. DISTRICT 2 SURVEY OFFICE (USE ONLY)

PERSONNEL

REFERENCE NO. 89

SHEET 5 OF 16

NOTES RHOADES

DATE 5/24/17

ROUTE US 224

H.C. O'DONNELL

WEATHER CLOUDY

COUNTY SENECA

R.C. POORE

TEMP. 62°

TOWNSHIP VENICE

DWG BY MILLER PID 102819

SECTION 10

T 1 N R 17 E

TYPE MONUMENT P.K./WASHER

ON SURFACE - ~~BELOW~~ ON

OFFSET ☉ PAVEMENT 1.8' LT : RT

9.5' TO RT EDGE PAVEMENT

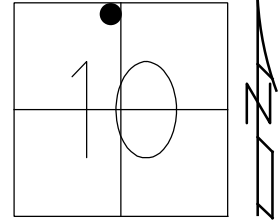
STATION: 1562+12.63

HORZ.DATUM: NAD83 (2011)

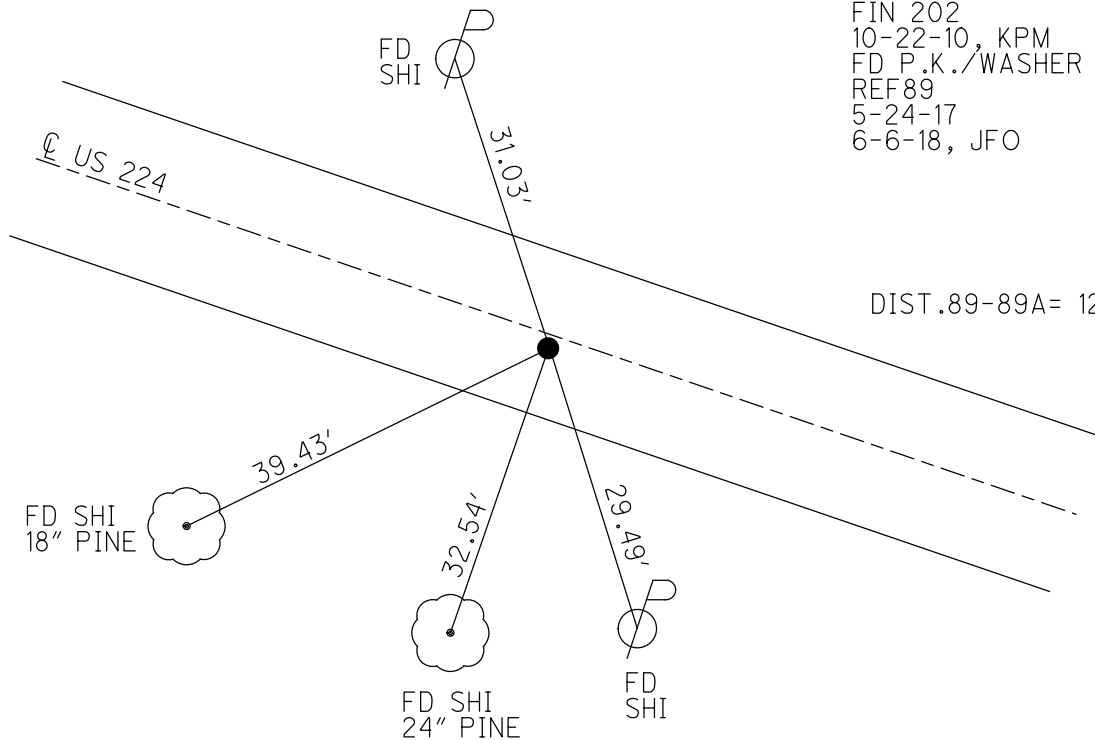
GEOID: NAVD88 2012A

GRID: NORTHING: 510243.170

EASTING: 1860186.271



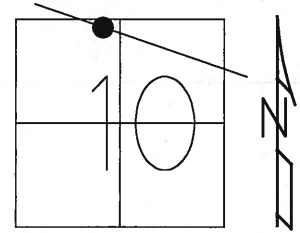
RECORD:
 STA. 1562+12.50
 10/25/91
 PREVIOUS MONUMENTS:
 P.K.NAIL, R.R.SPIKE
 SET P.K./WASHER
 9-9-93, RCC
 FD P.K.NAIL
 SV202
 10-7-09
 SET P.K./WASHER
 FIN 202
 10-22-10, KPM
 FD P.K./WASHER
 REF89
 5-24-17
 6-6-18, JFO



O.D.O.T. DISTRICT 2 SURVEY OFFICE (USE ONLY)

PERSONNEL	REFERENCE NO.	<u>89</u>	SHEET	<u>3</u>	OF	<u>13</u>
NOTES	<u>HARBAUGH</u>	DATE	<u>8/16/10</u>	ROUTE	<u>US 224</u>	
H.C.	<u>MOSE</u>	WEATHER	<u>SUNNY</u>	COUNTY	<u>SENECA</u>	
R.C.	<u>FINGER</u>	TEMP.	<u>80°</u>	TOWNSHIP	<u>VENICE</u>	
				SECTION	<u>10</u>	
				T	<u>1</u>	N
				R	<u>17</u>	E

TYPE MONUMENT P.K.NAIL
 ON SURFACE - ~~BELOW~~ ON
~~LEFT~~ - CL PAV'T - RIGHT 1.8'
9.5' TO RT EDGE PAVEMENT
 S.L.M. 1562+12.63



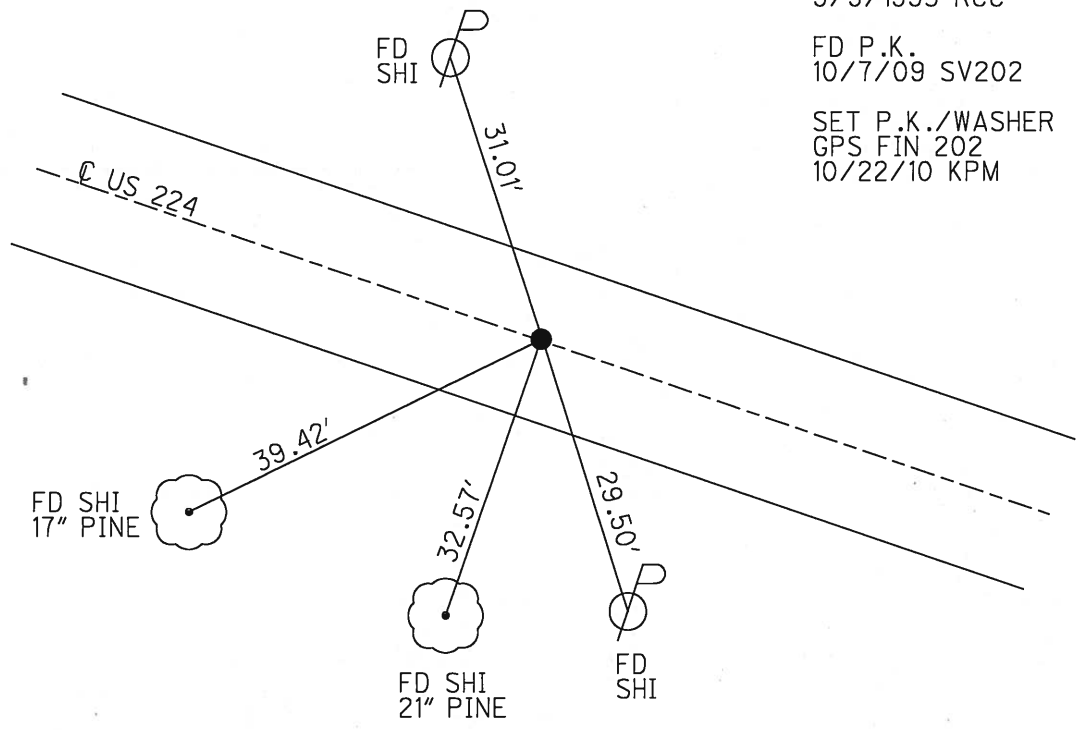
GRID: NORTHING: 510243.273 EASTING: 1860186.156

RECORD: 10/25/1991
 STA. 1562+12.50
 PREVIOUS MONUMENTS:
 P.K.NAIL, R.R.SPIKE

SET P.K./WASHER
 9/9/1993 RCC

FD P.K.
 10/7/09 SV202

SET P.K./WASHER
 GPS FIN 202
 10/22/10 KPM



O.D.O.T. DISTRICT 2 SURVEY OFFICE

PERSONNEL

REFERENCE NO. 89

SHEET 3 OF 21

NOTES CHENEY

H.C. RIPPLE

DATE 7-19-1993

ROUTE #224

R.C. BARBOUR

WEATHER CLOUDY

COUNTY SENECA

GEYMAN

TEMP. 80°

TOWNSHIP VENICE

SECTION 10

T. 1N R. 18E

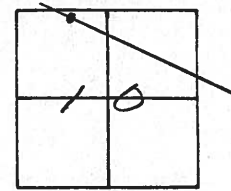
TYPE MONUMENT MINE SPK.

ON SURFACE - ~~BELOW~~ ON

~~LEFT~~ - RIGHT 1.5'

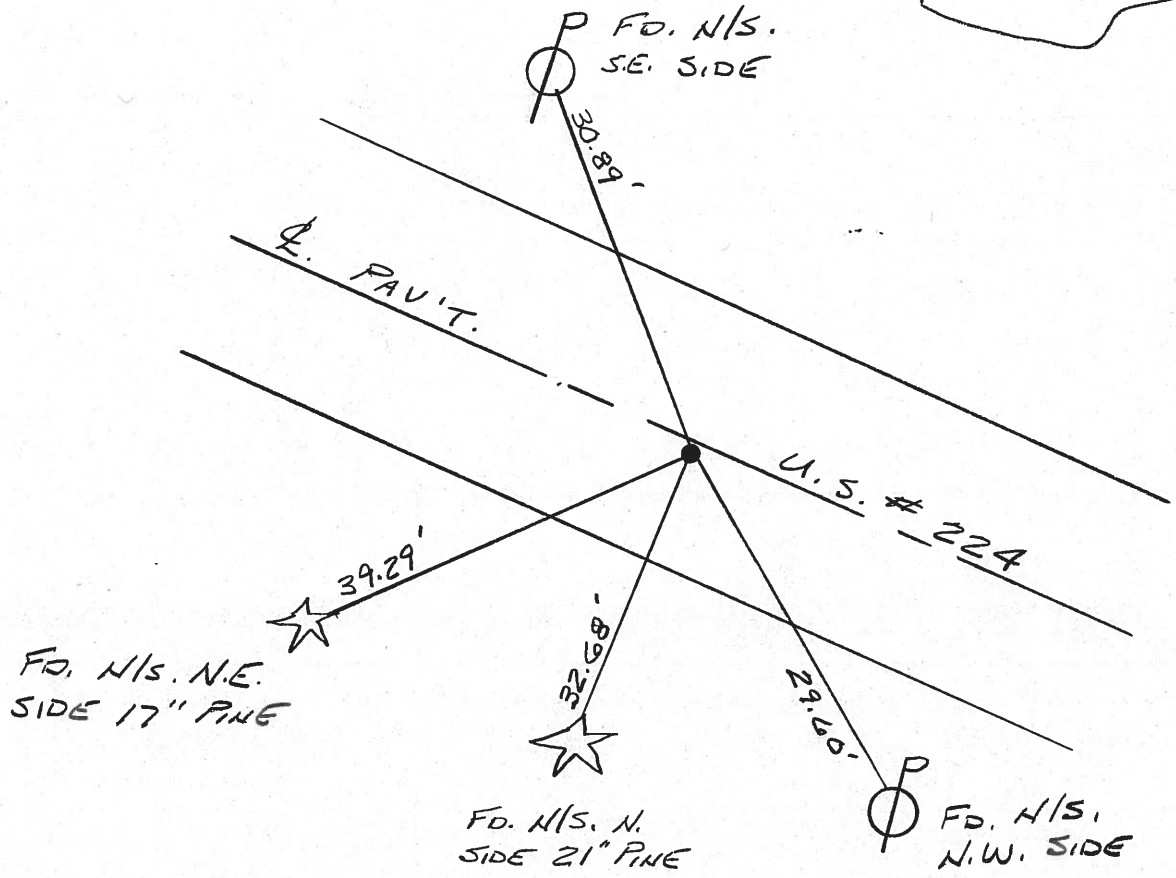
8.7' TO RT. EDGE PAVEMENT

S.L.M. 1508 + 74



RECORD: 10-25-1991
 STA. 1562+12.50
 PREVIOUS MONUMENTS:
P.K. NAIL
RR. SPK.

SET PK/WASHER
 9-9-1993
 RCC



O.D.O.T. DISTRICT 2 SURVEY OFFICE

PERSONNEL

REFERENCE NO. 89

SHEET 1 OF 4

NOTES CHENEY

H.C. RIPPLE

R.C. BARBOUR

DATE 10-25-1991

WEATHER CLOUDY

TEMP. 65°

ROUTE U.S. 224

COUNTY SENECA

TOWNSHIP VENICE

SECTION 10

T1N R18E

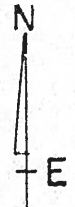
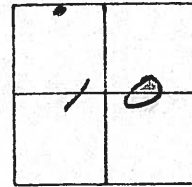
TYPE MONUMENT ED. SM. R.R. SPK.

ON SURFACE - ~~BELOW~~

~~LEFT~~ & PAV'T. - RIGHT 1.5'

8.7' TO RT. EDGE PAVEMENT

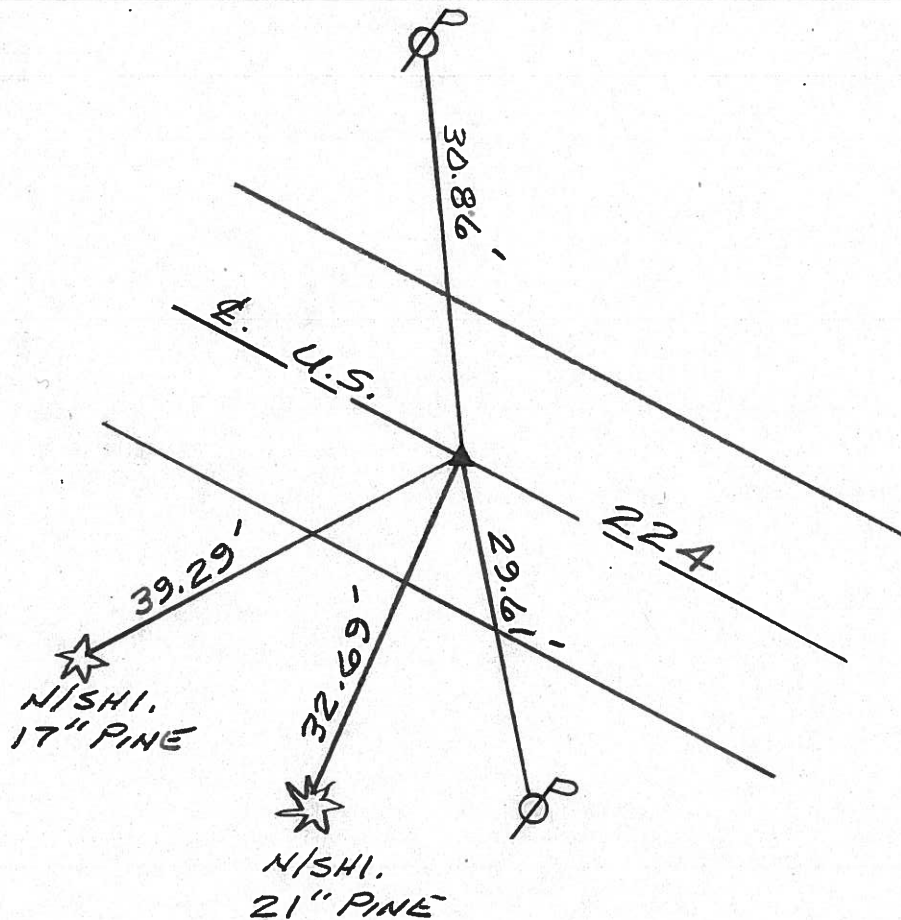
S.L.M. 1562+12.50



PREVIOUS MONUMENTS:

P.K. NAIL

R.R. SPK.



County SENECA S.R. U.S. 224

Date 7/15/83

Township VENICE

Weather CLEAR

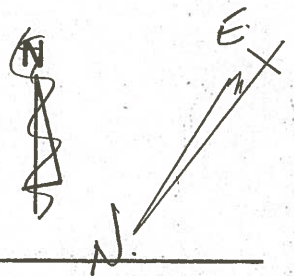
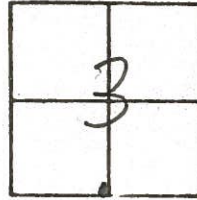
Section 13 11

Temp. +90°

T N, R E

Personnel HOFFMAN
LOEHRKE
HOUSEHOLDER
BARNHISEL

89

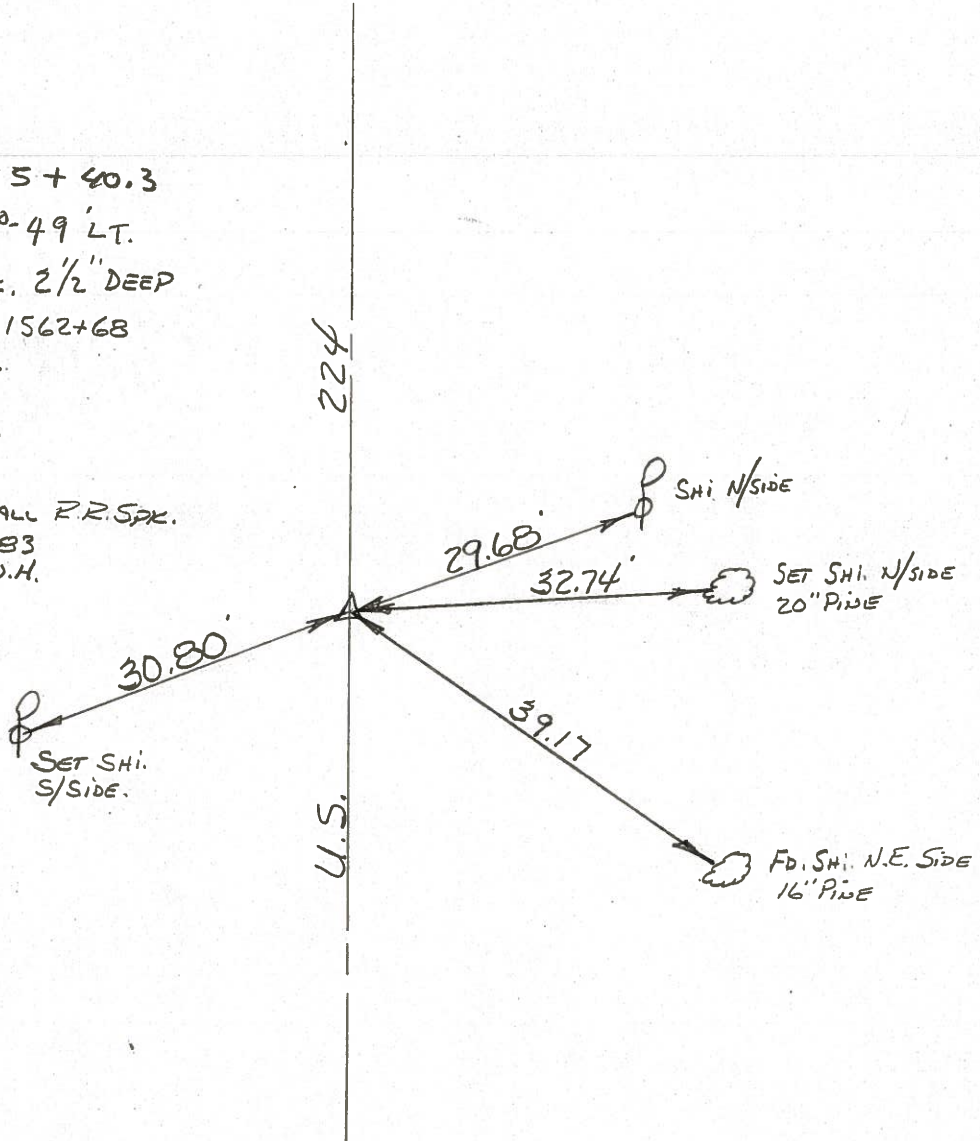


WEST CORP. LINE ? NOT HERE. POSSIBLE OLD LINE,
 NEW LINE IS WEST OF THE PARK.

ATTICA

1931 PLAN 245+40.3
 P.I. $\Delta = 3^{\circ}49' LT.$
 FD. R.R. SPK. 2 1/2" DEEP
 ST.M. STA. 1562+68
 1.7' RT. OF Δ
 11.5' N.E.P.
 B.1 TO S.E.P.

SET SMALL R.R. SPK.
 11-3-83
 S.W.H.



FD. SHI. N.E. SIDE
 16" PINE

PERSONNEL	TITLE	PERSONNEL	TITLE
Schneider			
Mosser			
Barbour			
Potts			

COUNTY Seneca

DATE 7-18-68
4-2-68

S. R. U.S. # 224

WEATHER Fair

SEC. S.R. # 100 to Attica

TEMP. 55°

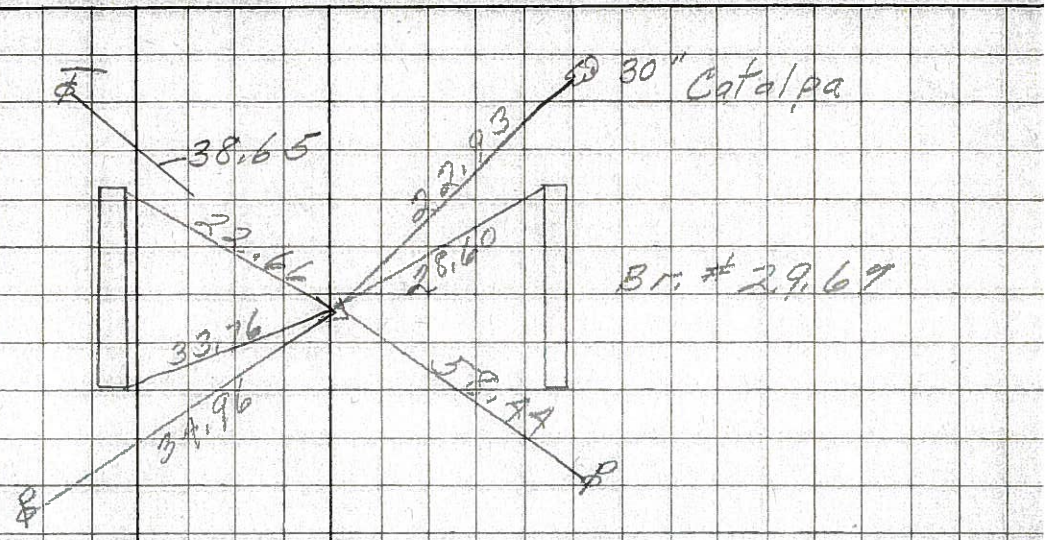
DESCRIPTION Ties for Control Points

JOB NO.

89-B

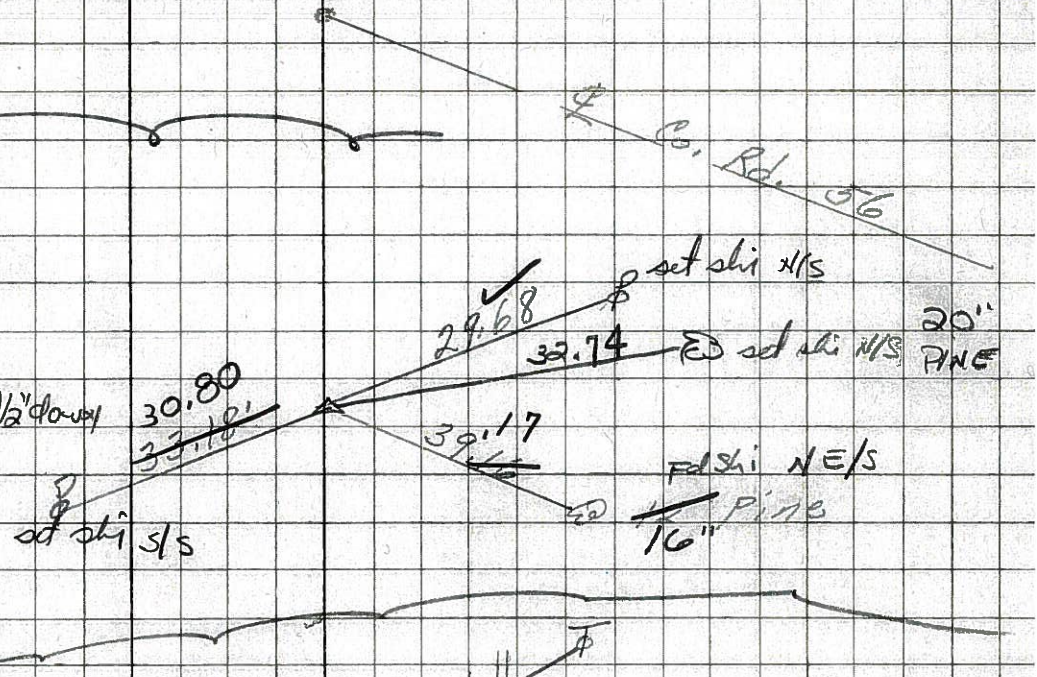
250 f 0.2
 P.I. ✓
 1664+
 R.R. Spk.

8641



89

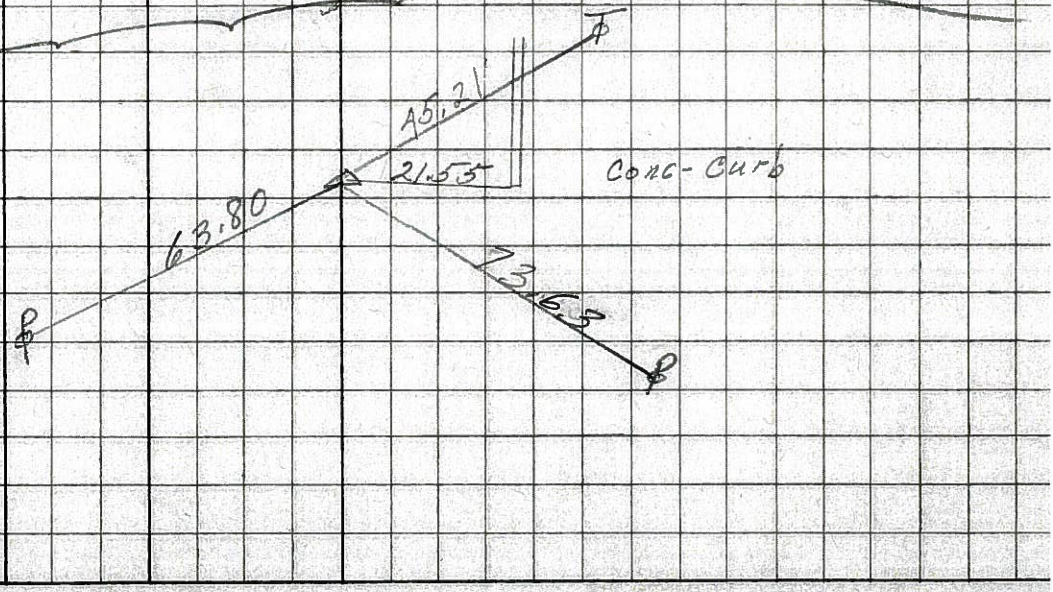
7-15-83
 P.I. ✓
 1559f Fd R.R. Spk. 2 1/2' down
 Reset R.R. NAIN
 SLM = 1562+68
 8640
 1.7 27-12
 11.5 NEP
 8.1 SEP



88-C

P.I. ✓
 R.R. Spk.
 Reset small Spk.

8639



PERSONNEL TITLE PERSONNEL TITLE

COUNTY Seneca DATE 1-12-66

S. R. U.S. # 224 WEATHER

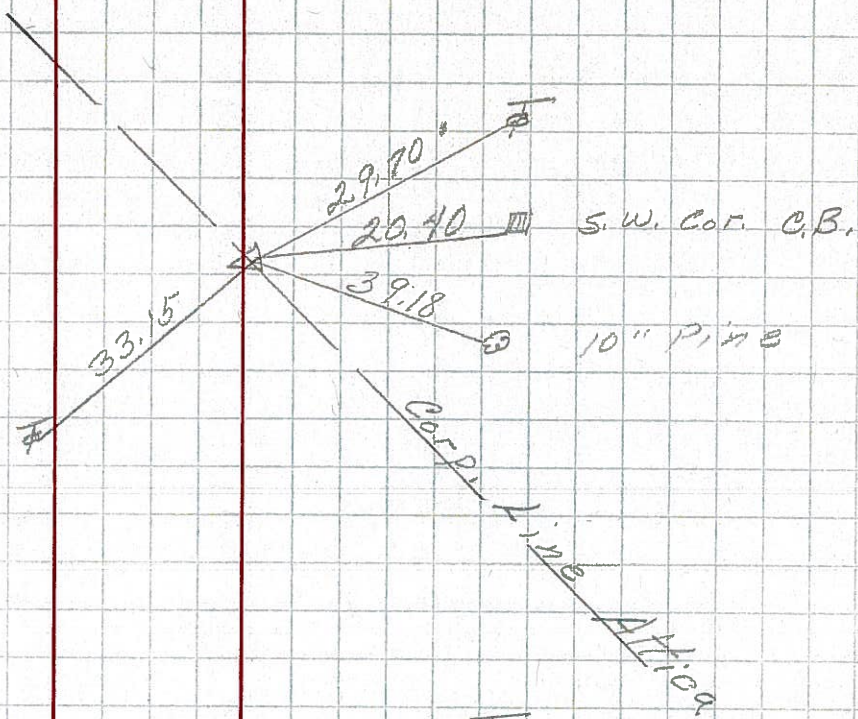
SEC. TEMP.

DESCRIPTION S.R. # 19 - Attica LEFT CENTER LINE RIGHT JOB NO.

89

245+40.3
Δ = 3° 49' Lt.
R.R. spk.

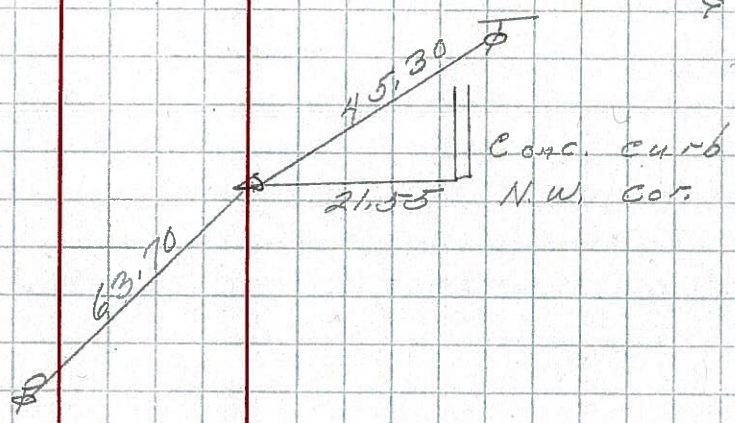
202



88-C

241+98.6
Δ = 0° 08' Lt.
R.R. spk.

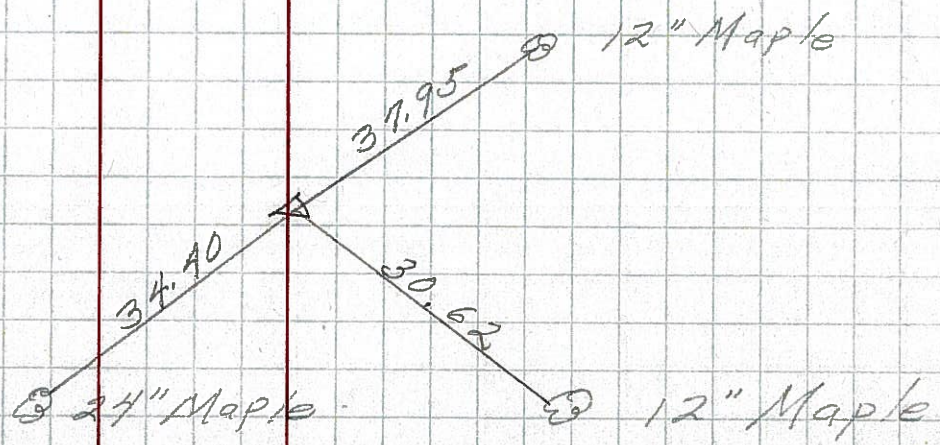
201



88-A

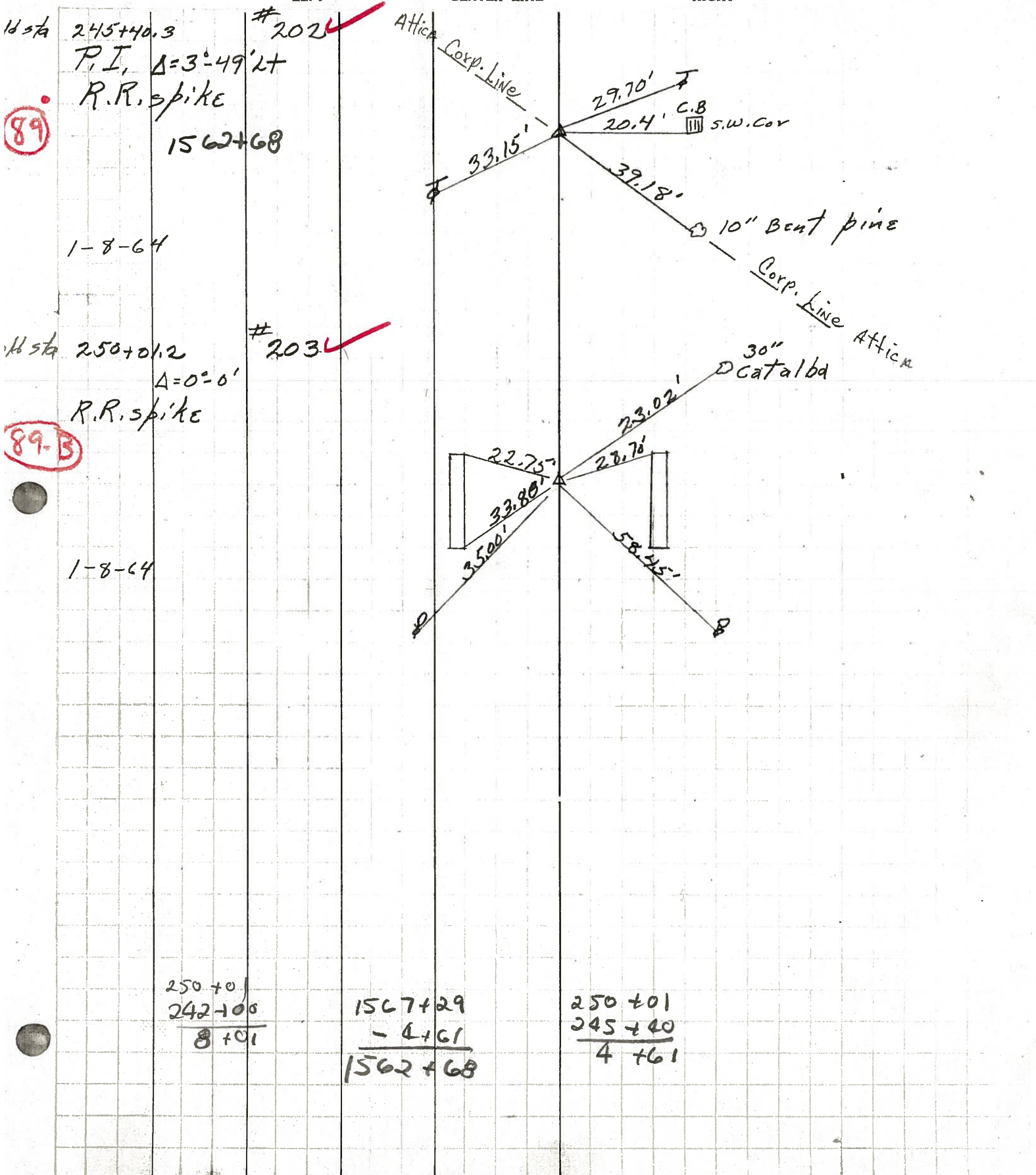
229+86
Δ = 0° 00'
R.R. spk.

200



PERSONNEL	TITLE	PERSONNEL	TITLE	COUNTY	DATE
KrBILL				Seneca	
Kowaleski				S. R. 224	WEATHER
Brooks				SEC.	TEMP.

DESCRIPTION _____ LEFT _____ CENTER LINE _____ RIGHT _____ JOB NO. _____



89

89-B

250+01
 242+00
 8+01

1567+29
 - 4+61
 1562+68

250+01
 245+40
 4+61

PERSONNEL TITLE PERSONNEL TITLE

COUNTY Seneca DATE

KrabiLL
Kowaleski
Brooks

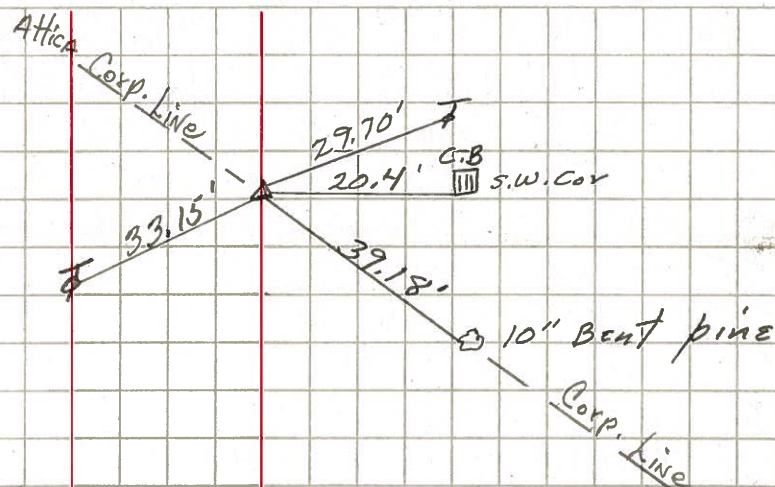
S. R. 224 WEATHER

SEC. TEMP.

DESCRIPTION LEFT CENTER LINE RIGHT JOB NO.

old sta 245+40.3 #202
P.I. $\Delta=3^{\circ}49'LT$
R.R. spike

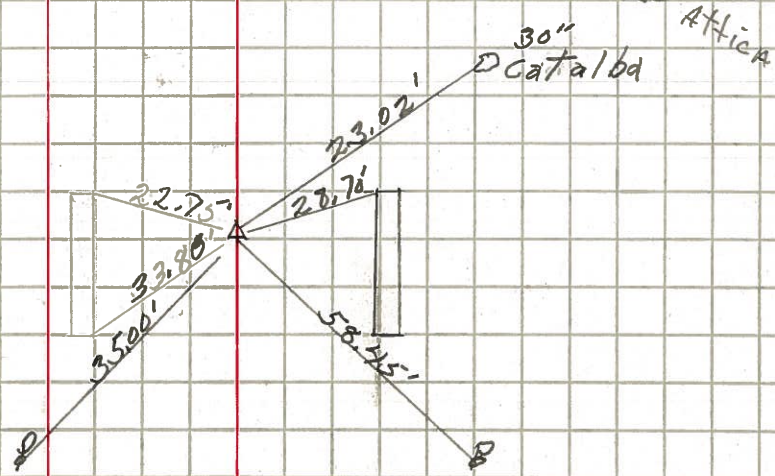
89



1-8-64

old sta 250+01.2 #203
 $\Delta=0^{\circ}0'$
R.R. spike

89-B



1-8-64

PERSONNEL TITLE PERSONNEL TITLE

COUNTY Seneca

DATE 10-11-49

S. R. #224

WEATHER

SEC. G-D-F-E

TEMP.

DESCRIPTION S.H. #272

LEFT

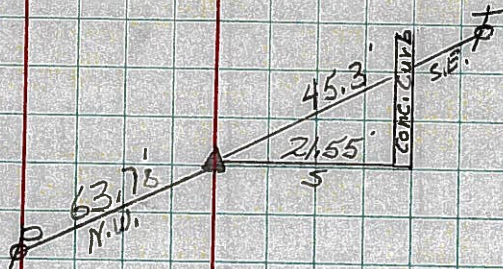
CENTER LINE

RIGHT

JOB NO.

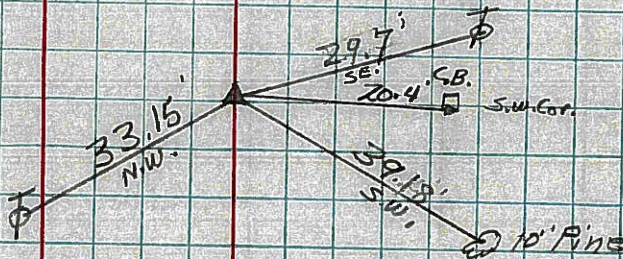
88-C

Sta. 241+99.6
 $\Delta = 0^{\circ}-08'Lt$
 R.R. Spike on ϕ E/W
 6-26-59
 Reset 8-10-59 #201



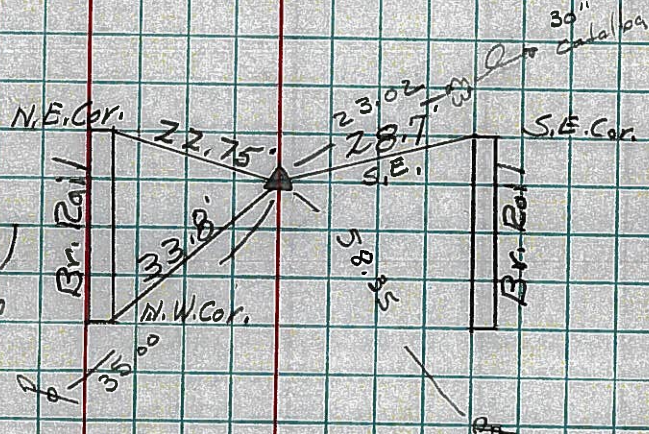
89

Sta. 245+40.3
 $\Delta = 3^{\circ}-49'Lt$
 R.R. Spike on ϕ E/W
 6-26-59
 Reset 8-10-59 #202



89-B

Sta. 250+01.2
 $\Delta = 0^{\circ}-0$
 R.R. Spike on ϕ E/W
 End of Sec. F. = 251+00
 Sec. Attica Part.
 #203



Set Spike
 $\Delta = 22-60$

Sta. 251+00
 Same as 250+01.2 above

S.A. 272 Sec. Attica Part.