

O.D.O.T. DISTRICT 2 SURVEY OFFICE (USE ONLY)

PERSONNEL

REFERENCE NO. 89 A

SHEET 6 OF 16

NOTES RHOADES

DATE 5/24/17

ROUTE US 224

H.C. O'DONNELL

WEATHER CLOUDY

COUNTY SENECA

R.C. POORE

TEMP. 62°

TOWNSHIP VENICE

SECTION 10

DWG BY MILLER

PID 102819

T 1 N R 17 E

TYPE MONUMENT P.K./WASHER

ON SURFACE - ~~BELOW~~ ON

OFFSET \odot PAVEMENT 0.6' ~~LT~~ : RT

11.8' TO LT EDGE PAVEMENT

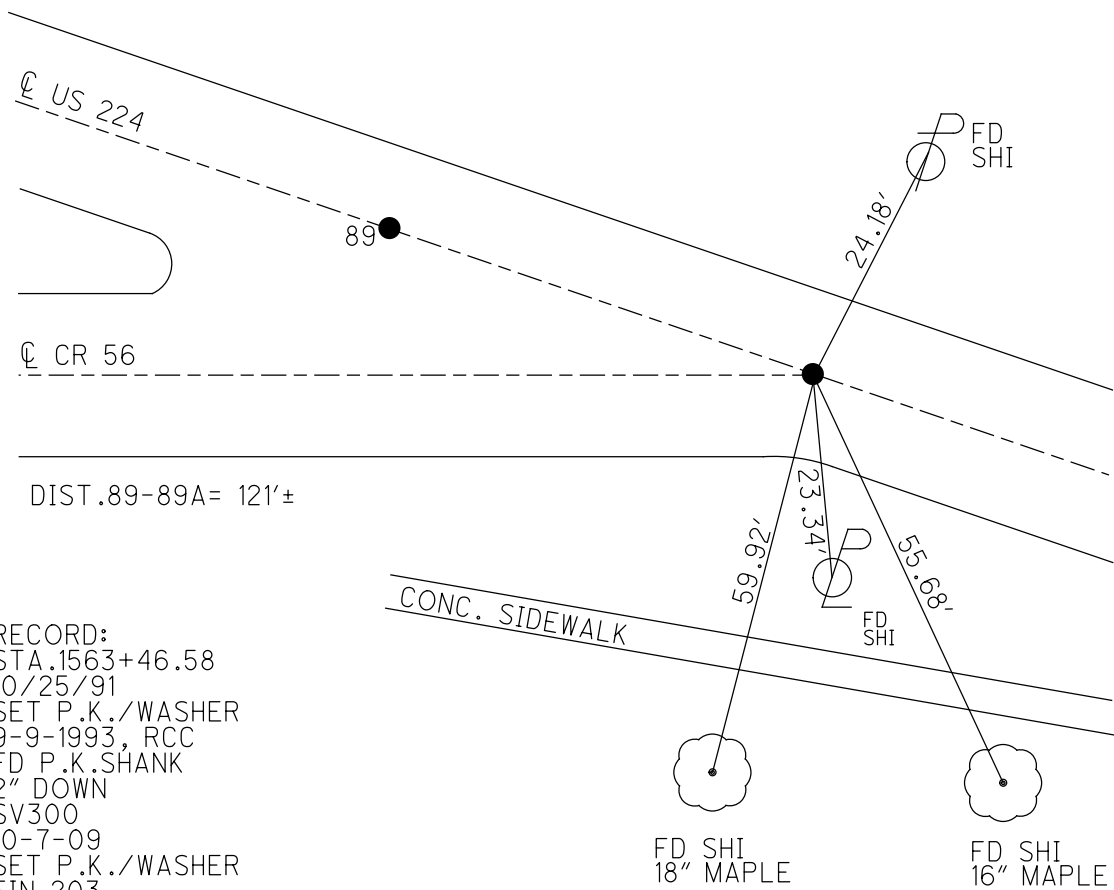
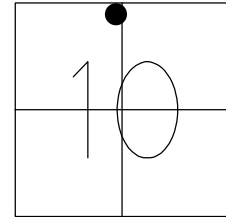
STATION: 1563+46.58

HORZ.DATUM: NAD83 (2011)

GEOID: NAVD88 2012A

GRID: NORTHING: 510187.544

EASTING: 1860308.112

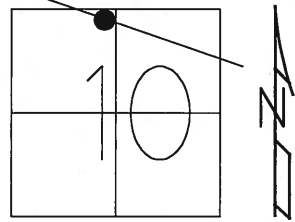


RECORD:
 STA. 1563+46.58
 10/25/91
 SET P.K./WASHER
 9-9-1993, RCC
 FD P.K. SHANK
 2" DOWN
 SV300
 10-7-09
 SET P.K./WASHER
 FIN 203
 10-22-10, KPM
 FD P.K./WASHER
 REFA89
 5-24-17
 6-6-18, JFO

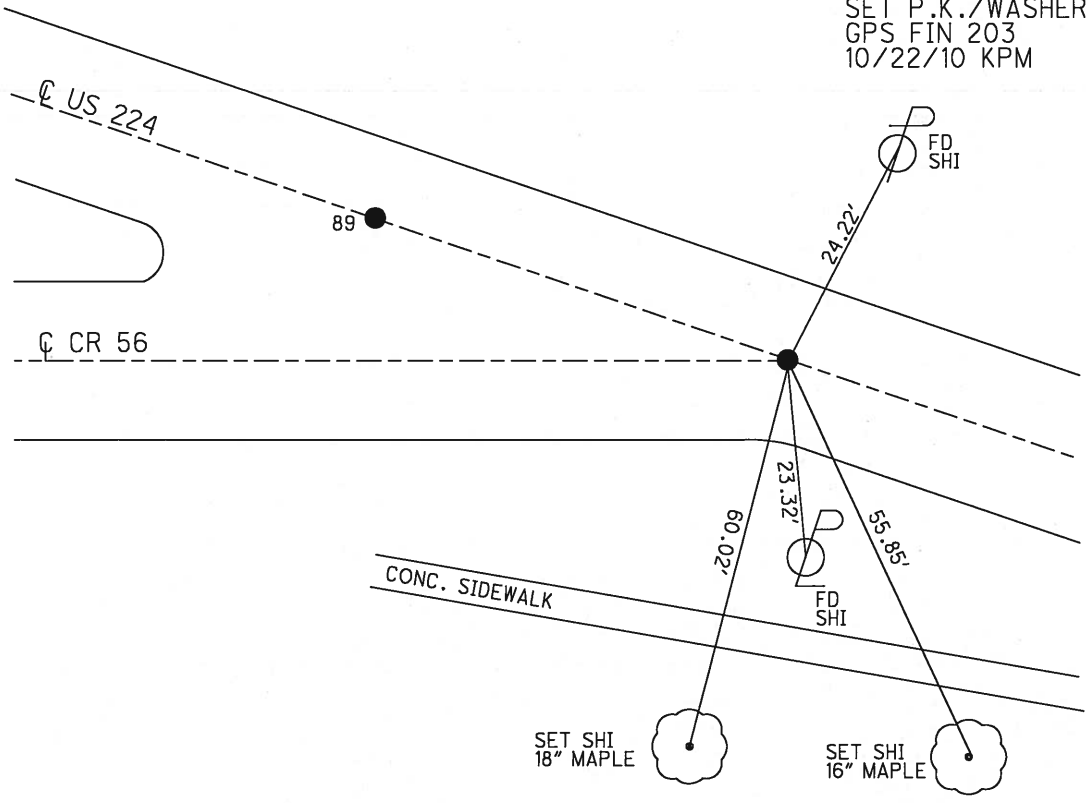
O.D.O.T. DISTRICT 2 SURVEY OFFICE (USE ONLY)

PERSONNEL _____ REFERENCE NO. 89 A SHEET 4 OF 13
 NOTES HARBAUGH DATE 8/16/10 ROUTE US 224
 H.C. MOSER WEATHER SUNNY COUNTY SENECA
 R.C. FINGER TEMP. 80° TOWNSHIP VENICE
 _____ SECTION 10
 _____ T 1 N R 17 E

TYPE MONUMENT P.K./WASHER
 ON SURFACE - ~~BELOW~~ ON
~~LEFT~~ - CL PAV'T - RIGHT 0.6'
11.8' TO LT EDGE PAVEMENT
 S.L.M. 1563+46.58
 GRID: NORTHING: 510187.554 EASTING: 1860307.987



RECORD: 10/25/1991
 STA. 1563+46.58
 SET P.K./WASHER
 9/9/1993 RCC
 FD SHANK 2" DOWN
 10/7/09 SV300
 SET P.K./WASHER
 GPS FIN 203
 10/22/10 KPM



O.D.O.T. DISTRICT 2 SURVEY OFFICE

PERSONNEL

REFERENCE NO. 89-A

SHEET 4 OF 21

NOTES CHEHEY

H.C. RIPPLE

DATE 7-19-1993

ROUTE #224

R.C. BARBOUR

WEATHER CLOUDY

COUNTY SENECA

GEYMAN

TEMP. 80°

TOWNSHIP VENICE

SECTION 10

T. 1 N R. 18 E

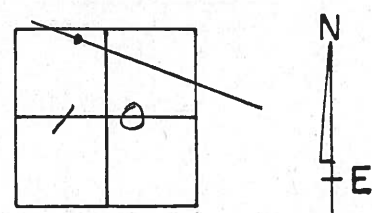
TYPE MONUMENT PK/WASHER

ON SURFACE - ~~BELOW~~ ON

~~LEFT~~ - PAV'T. - RIGHT 0.5' RT

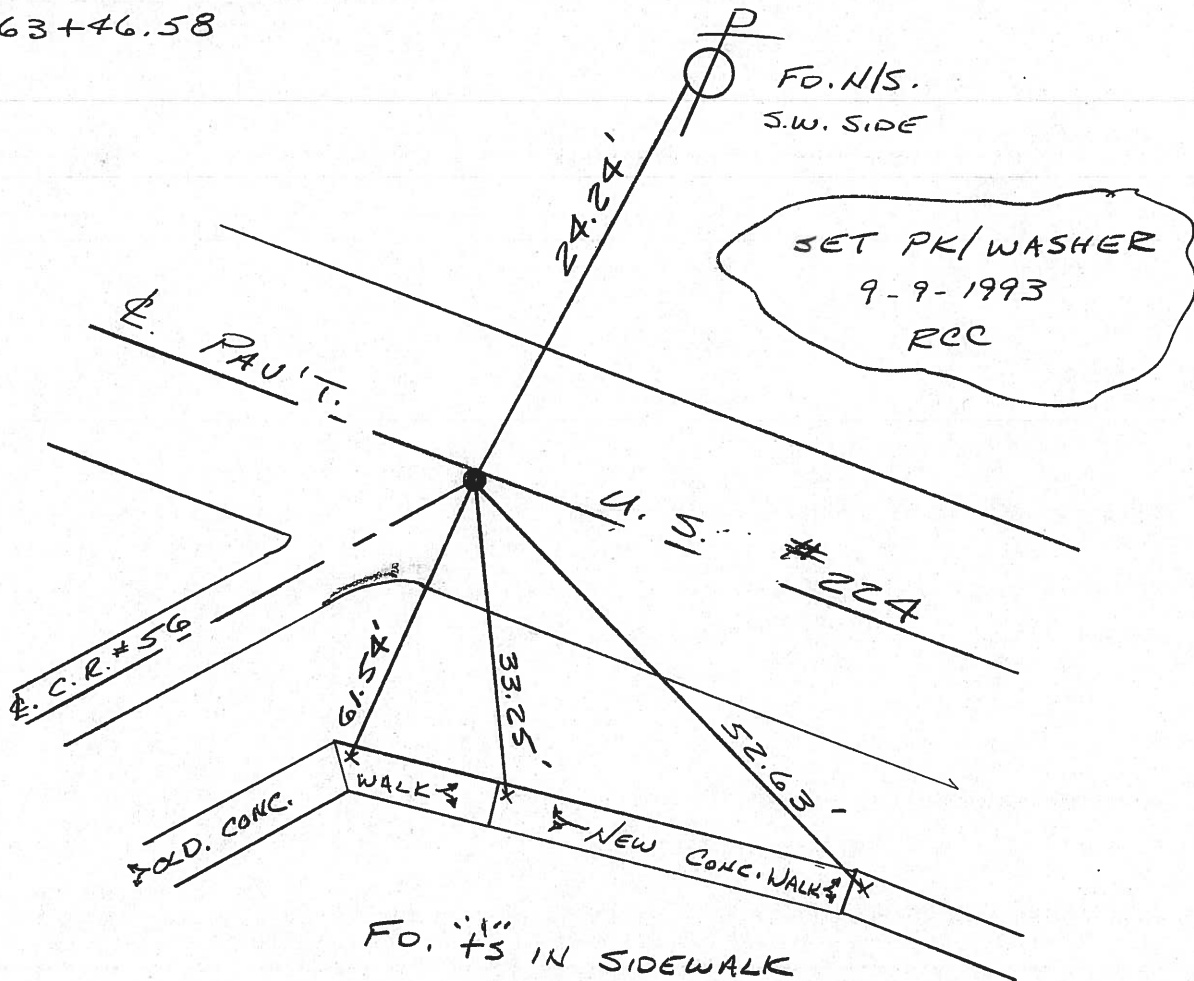
10' TO RT. EDGE PAVEMENT

S.L.M. 1508+74



RECORD: 10-25-1991

STA. 1563+46.58



O.D.O.T. DISTRICT 2 SURVEY OFFICE

PERSONNEL

REFERENCE NO. 89-1A

SHEET 2 OF 4

NOTES CHENEY

H.C. RIPPLE

R.C. BARBOUR

DATE 10-25-1991

WEATHER CLOUDY

TEMP. 65°

ROUTE U.S. 224

COUNTY SENECA

TOWNSHIP VENICE

SECTION 10

T1 N R 1 B E

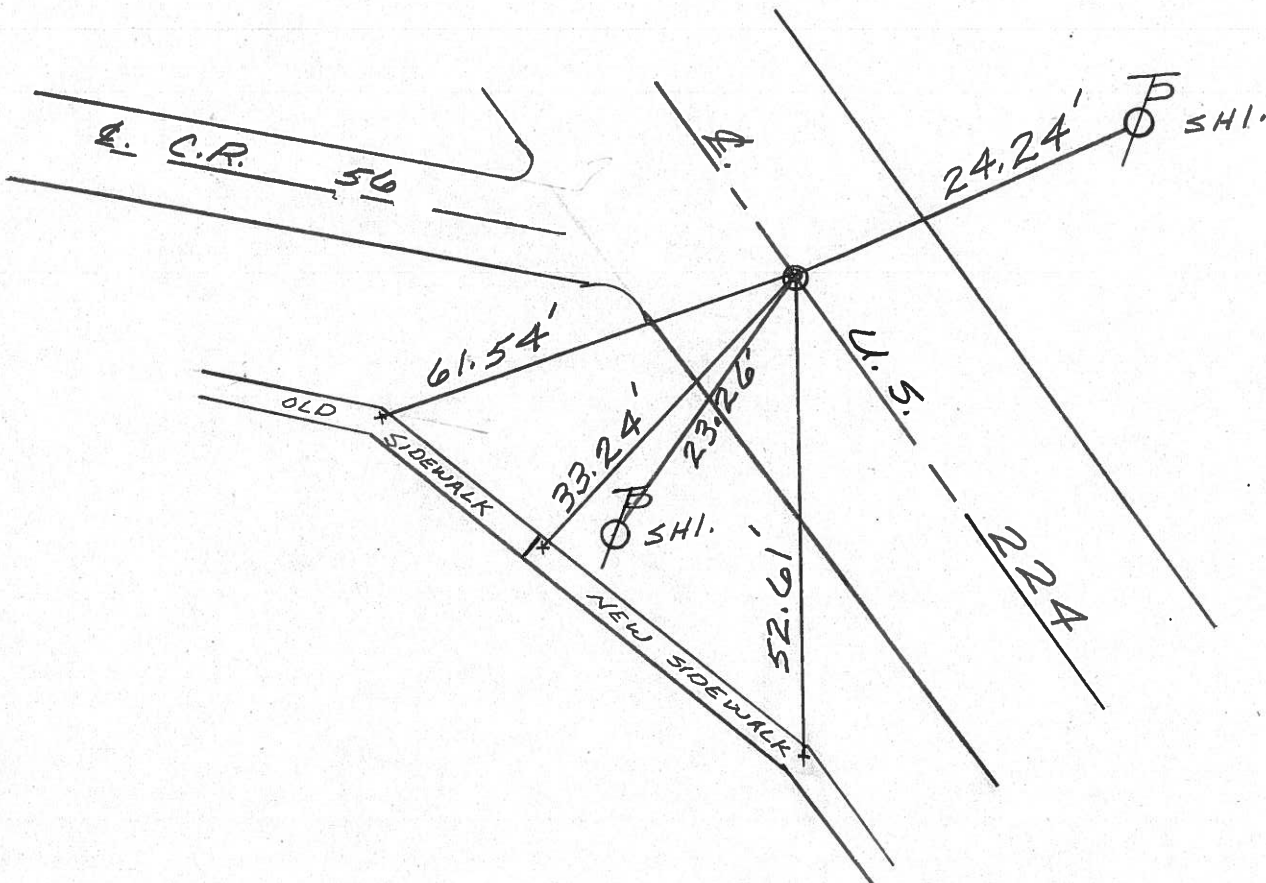
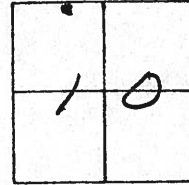
TYPE MONUMENT FD. P.K. / WASHER

ON SURFACE - BELOW

~~FEET~~ - & PAV'T. - RIGHT 0.5'

10' TO RT. EDGE PAVEMENT

S.L.M. 1563+46.58



County SENECA S.R.U.S. 224

Date 7/15/83

Township VENICE

Weather CLEAR

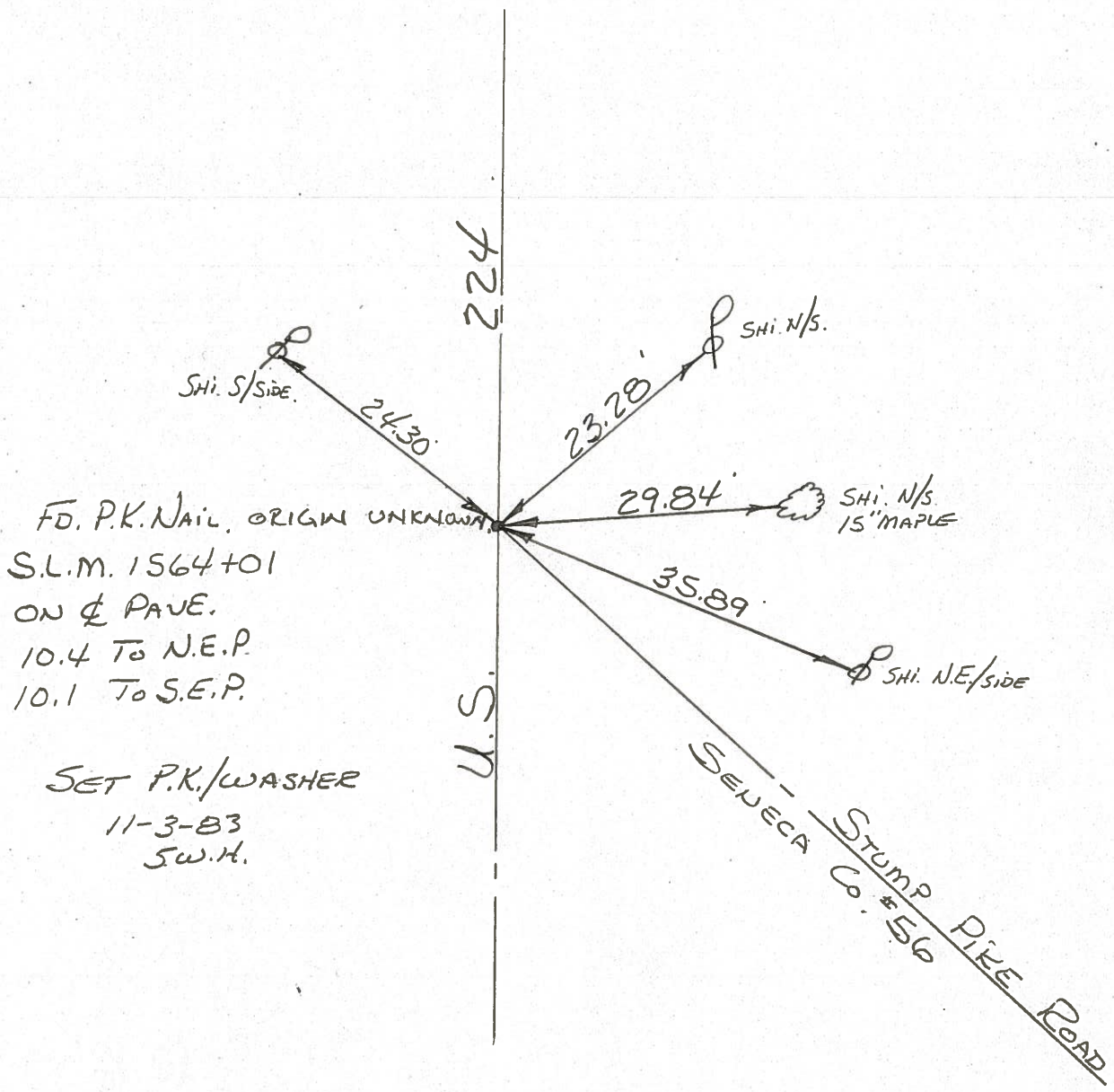
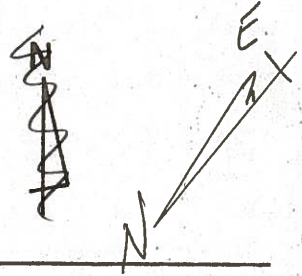
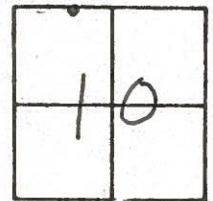
Section 10

Temp. +90°

T N, R E

Personnel HOFFMAN
LOEHRKE
HOUSEHOLDER
BARNHISEL

89°A



FD. P.K. NAIL, ORIGIN UNKNOWN
 S.L.M. 1564+01
 ON & PAVE.
 10.4 To N.E.P.
 10.1 To S.E.P.

SET P.K./WASHER
 11-3-83
 S.W.H.