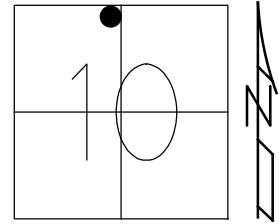


O.D.O.T. DISTRICT 2 SURVEY OFFICE (USE ONLY)

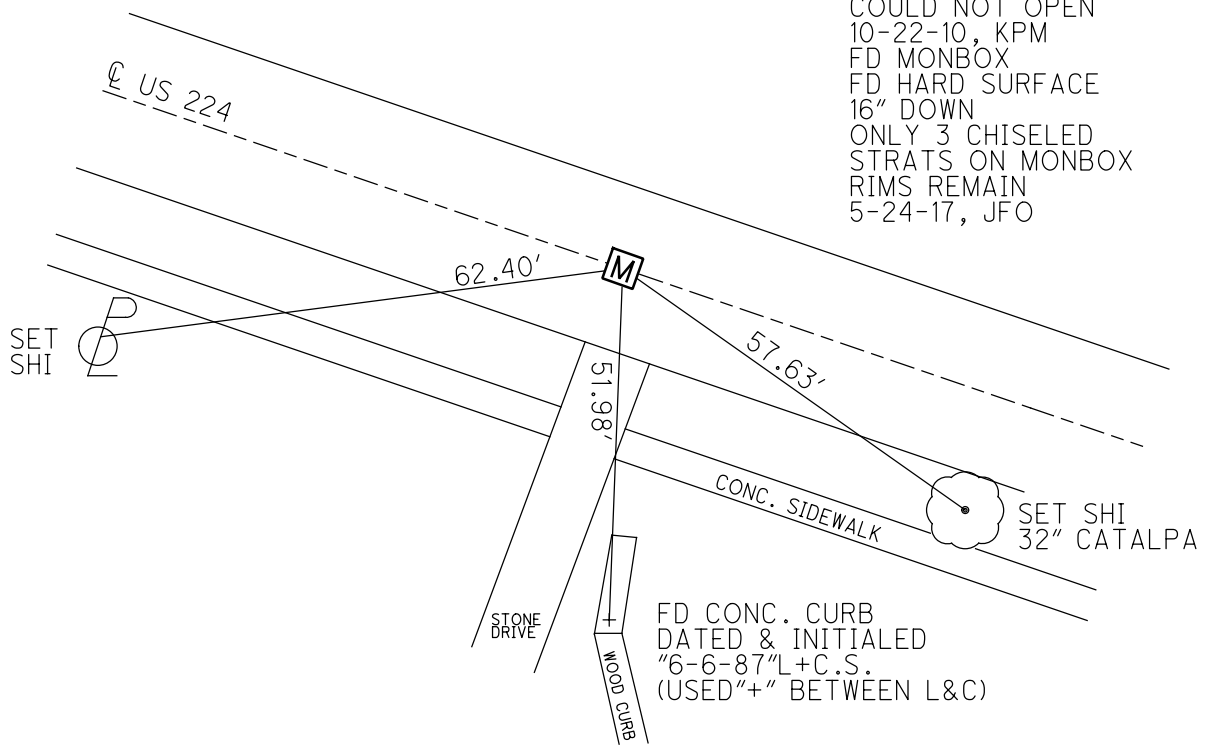
PERSONNEL \_\_\_\_\_ REFERENCE NO. 89 B SHEET 7 OF 16  
 NOTES HARBAUGH DATE 8/16/10 ROUTE US 224  
 H.C. MOSER WEATHER SUNNY COUNTY SENECA  
 R.C. FINGER TEMP. 80° TOWNSHIP VENICE  
 DWG BY MILLER PID 102819 SECTION 10  
 T 1 N R 17 E

TYPE MONUMENT MON BOX  
 ON SURFACE - ~~BELOW~~ ON \_\_\_\_\_  
 OFFSET  $\phi$  PAVEMENT 1' LT : ~~RT~~  
10.8' TO LT EDGE PAVEMENT  
 STATION: 1566+71.20

HORIZ.DATUM: NAD83 (2011) GEOID: NAVD88 2012A  
 GRID: NORTHING: 510052.200 EASTING: 1860603.059



RECORD:  
 1931 PLAN  
 10/25/91  
 250+00 ATTICA S.H.272  
 250+01.2 SEC. F  
 PREVIOUS MONUMENTS:  
 P.K./WASHER, R.R. SPIKE  
 SET P.K./WASHER  
 STA 1513+33  
 9-9-93, RCC  
 FD MONBOX  
 SV204  
 10-7-09  
 COULD NOT OPEN  
 10-22-10, KPM  
 FD MONBOX  
 FD HARD SURFACE  
 16" DOWN  
 ONLY 3 CHISELED  
 STRATS ON MONBOX  
 RIMS REMAIN  
 5-24-17, JFO



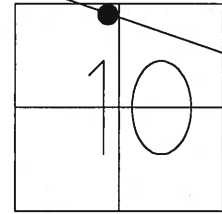
FD CONC. CURB  
 DATED & INITIALED  
 "6-6-87" L+C.S.  
 (USED "+" BETWEEN L&C)

O.D.O.T. DISTRICT 2 SURVEY OFFICE (USE ONLY)

PERSONNEL \_\_\_\_\_ REFERENCE NO. 89 B SHEET 5 OF 13

NOTES HARBAUGH DATE 8/16/10 ROUTE US 224  
 H.C. MOSER WEATHER SUNNY COUNTY SENECA  
 R.C. FINGER TEMP. 80° TOWNSHIP VENICE  
 \_\_\_\_\_ SECTION 10  
 \_\_\_\_\_ T 1 N R 17 E

TYPE MONUMENT MONBOX  
 ON SURFACE - ~~BELOW~~ ON  
 LEFT - ☉ PAV'T - ~~RIGHT~~ 1'  
10.8' TO LT EDGE PAVEMENT  
 S.L.M. 1566+71.20



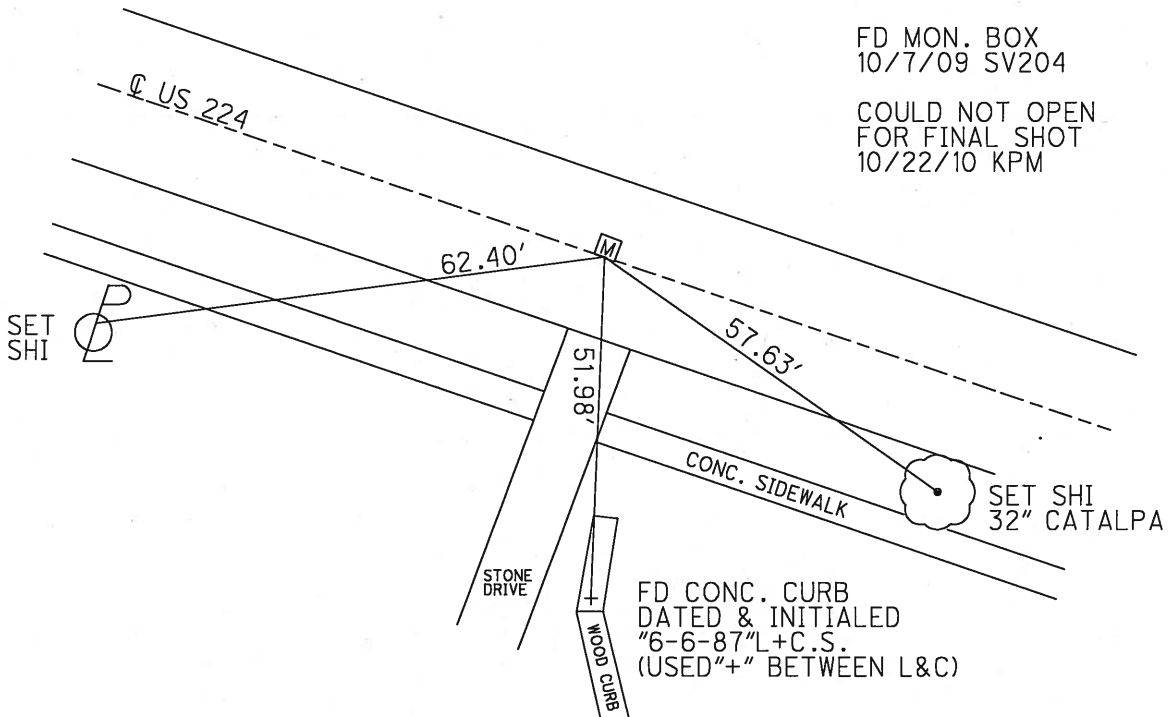
GRID: NORTHING: 510052.2004 EASTING: 1860603.0591

RECORD: 10/25/1991  
 1931 PLAN:  
 250+00 ATTICA S.H.272  
 250+01.2 SEC.F  
 PREVIOUS MONUMENTS:  
 P.K./WASHER, R.R.SPIKE

SET P.K./WASHER  
 STA. 1513+33  
 9/9/1993 RCC

FD MON. BOX  
 10/7/09 SV204

COULD NOT OPEN  
 FOR FINAL SHOT  
 10/22/10 KPM



O.D.O.T. DISTRICT 2 SURVEY OFFICE

PERSONNEL

REFERENCE NO. 89-B

SHEET 5 OF 21

NOTES CAHNEY

H.C. RIPPLE

R.C. BARBOUR

GEYMAN

DATE 7-19-1993

WEATHER CLOUDY

TEMP. 80°

ROUTE #224

COUNTY SENECA

TOWNSHIP VENICE

SECTION 10

TIN RIBE

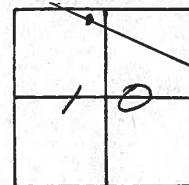
TYPE MONUMENT PK/WASHER

ON SURFACE - ~~BELOW~~ ON

LEFT- & PAV'T. - ~~RIGHT~~ 1'

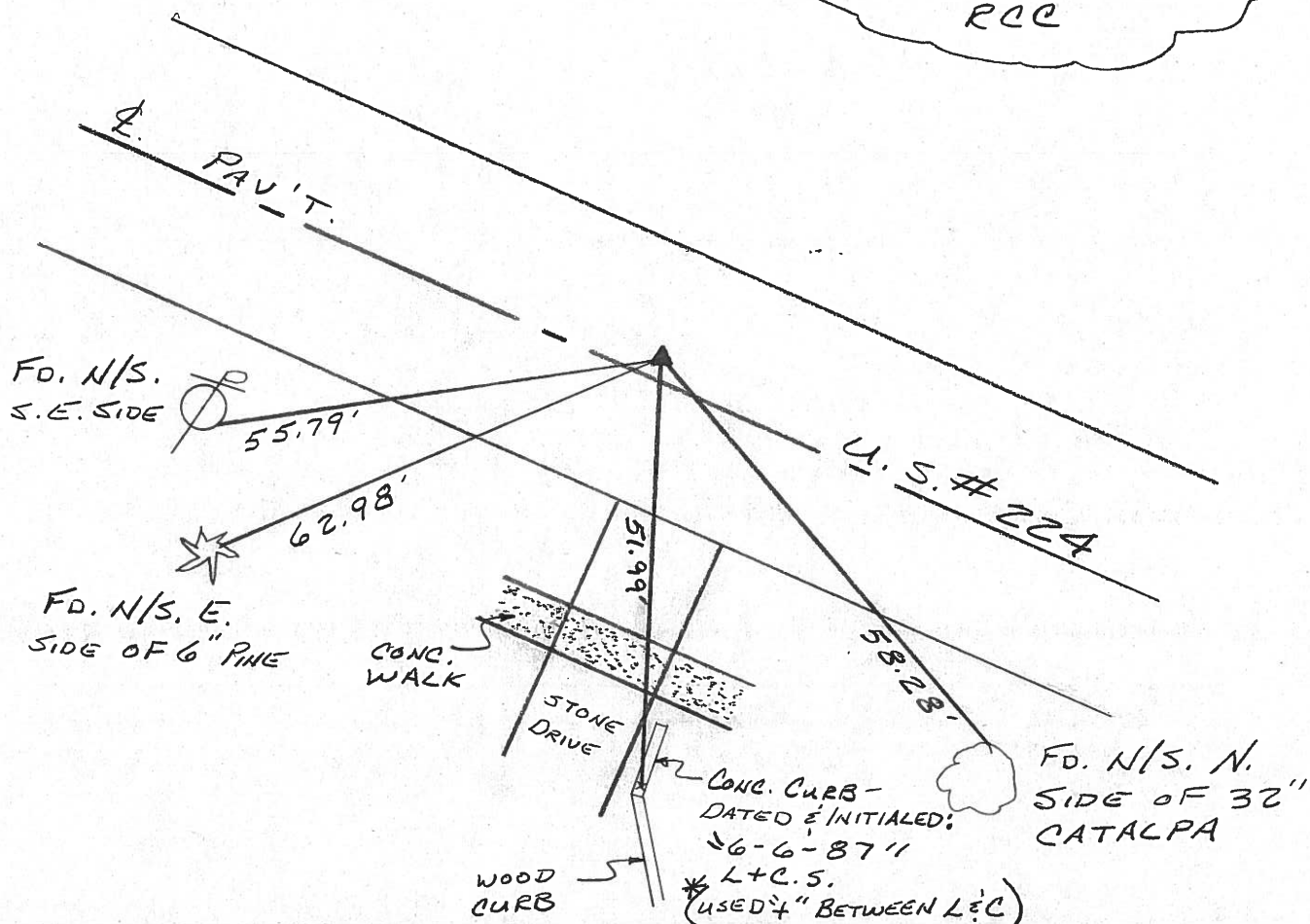
10.5' TO LT. EDGE PAVEMENT

S.L.M. 1513+33



RECORD: 10-25-1991  
1931 PLAN  
251+00 ATTICA S.H. 272  
250+01.2 SEC. F  
 PREVIOUS MONUMENT: R.R. SPK.

SET PK/WASHER  
 9-9-1993  
 RCC



# O.D.O.T. DISTRICT 2 SURVEY OFFICE

PERSONNEL

REFERENCE NO. 89-B

SHEET 3 OF 4

NOTES CHENEY

H.C. RIPPLE

R.C. BARBOUR

DATE 10-25-1991

WEATHER CLOUDY

TEMP. 65°

ROUTE U.S. 224

COUNTY SENECA

TOWNSHIP VENICE

SECTION 10

T/L NR 18E

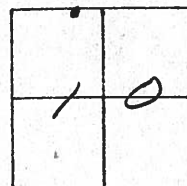
TYPE MONUMENT ED. PK/WASHER

ON SURFACE - BELOW

LEFT- & PAV'T. - RIGHT 1'

10.5 TO LT. EDGE PAVEMENT

S.L.M. 1566+71.24

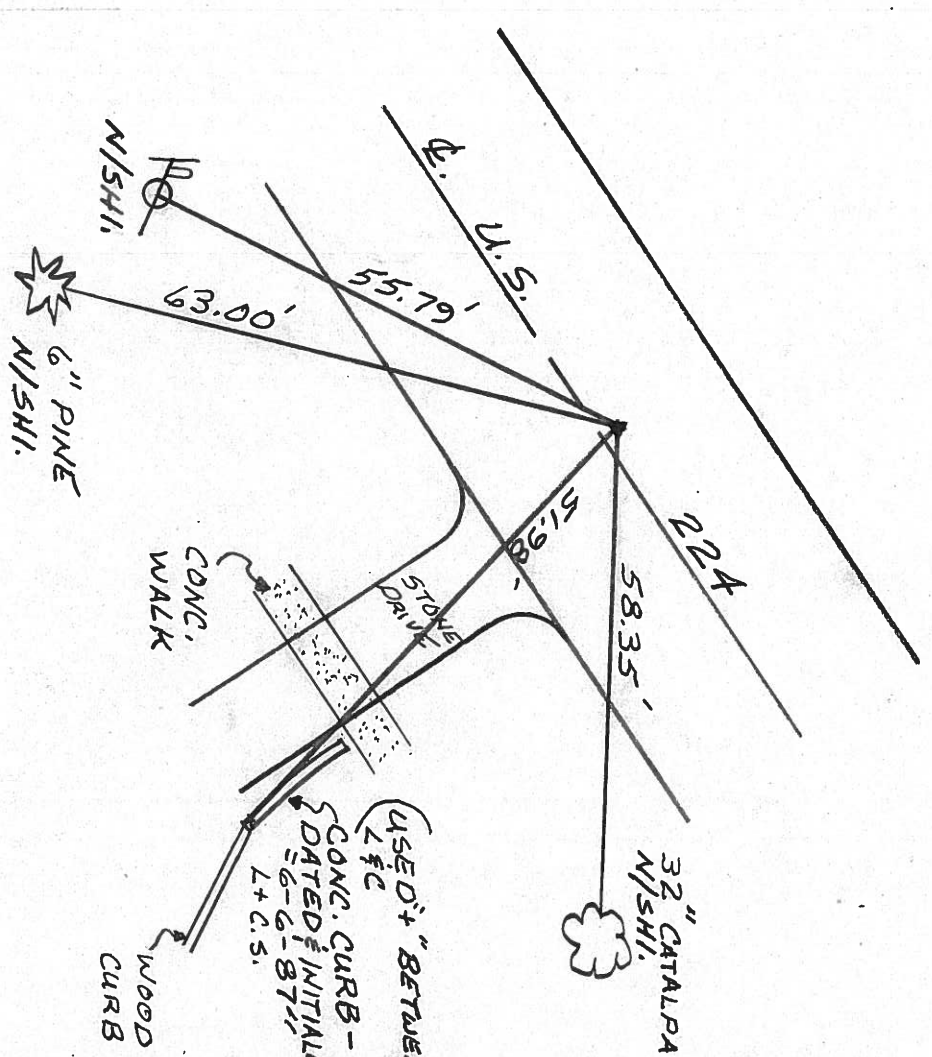


PREVIOUS MONUMENT:

R.R. SPK.

1931 PLAN 251400 ATTICA

SH. 272 250401.2 SEC. F



USED "BETWEEN"  
L & C  
CONC. CURB -  
DATED & INITIALED:  
6-6-87  
L + C.S.



County SENECA S.R. U.S. 224

Date 7/15/83

Township VENICE

Weather CLEAR

Section 10

Temp. +90°

T N, R E

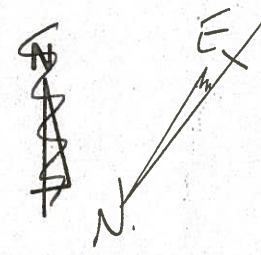
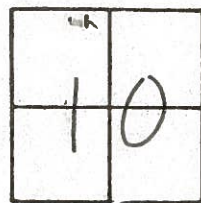
Personnel HOFFMAN

LOEHRKE

HOUSEHOLDER

BARNHISEL

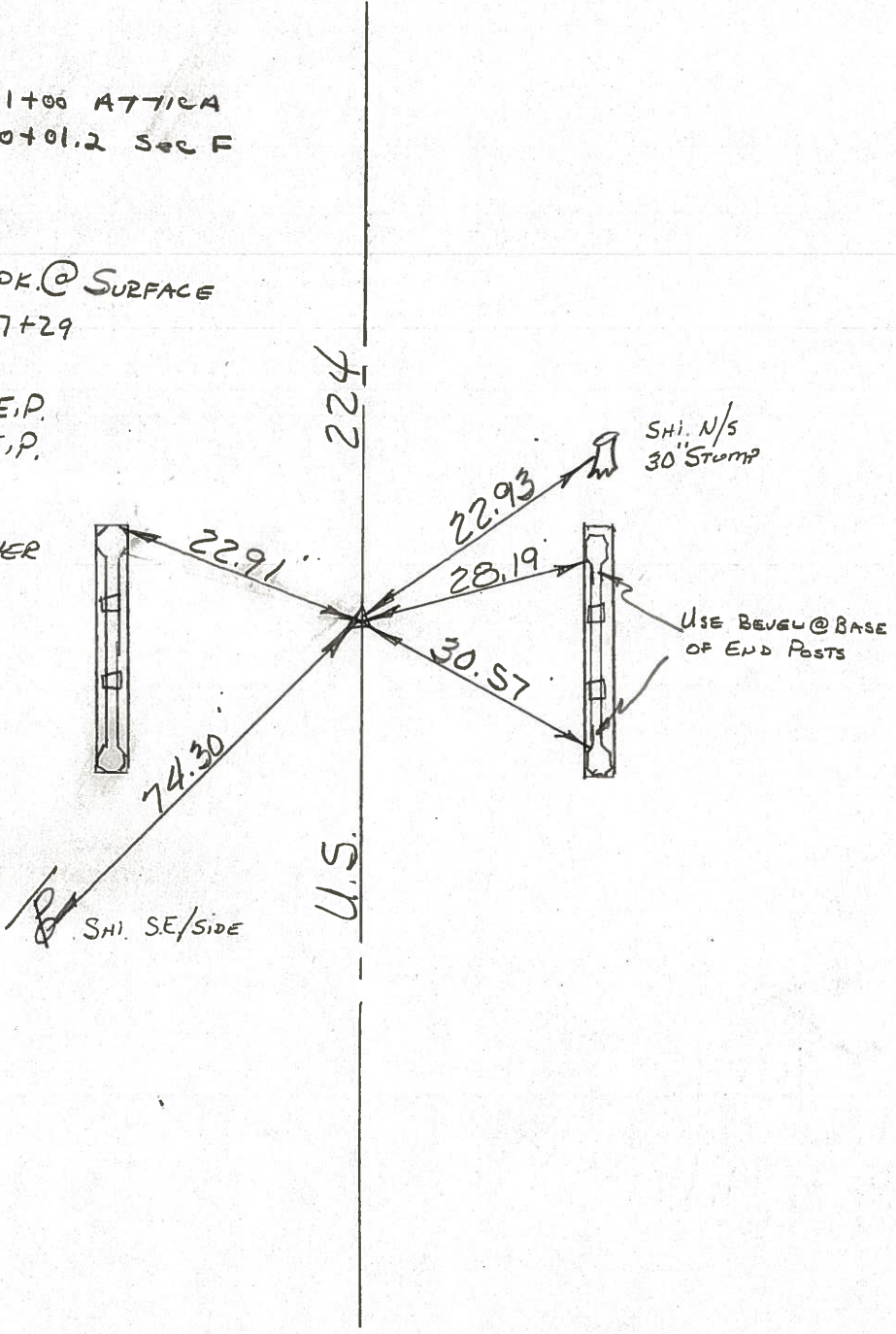
89-B



1931 PLAN 251+00 ATTICA  
 S.H. 272 250+01.2 SEC F

FD. R.R. SPK. @ SURFACE  
 S.L.M. 1567+29  
 1.0' LT. &  
 9.5 TO N.E.P.  
 10.5 TO S.E.P.

SET P.K./WASHER  
 11-3-83  
 S.W.H.



SHI. N/S  
 30' STUMP

USE BEVEL @ BASE  
 OF END POSTS

SHI. SE/SIDE



PERSONNEL TITLE PERSONNEL TITLE

COUNTY Seneca

DATE 7-18-68  
4-2-68

Schneider

Mosser

Barbour

Potts

S. R. U.S. #224

WEATHER Fair

SEC. S.R. #100 to Attica

TEMP. 55°

DESCRIPTION

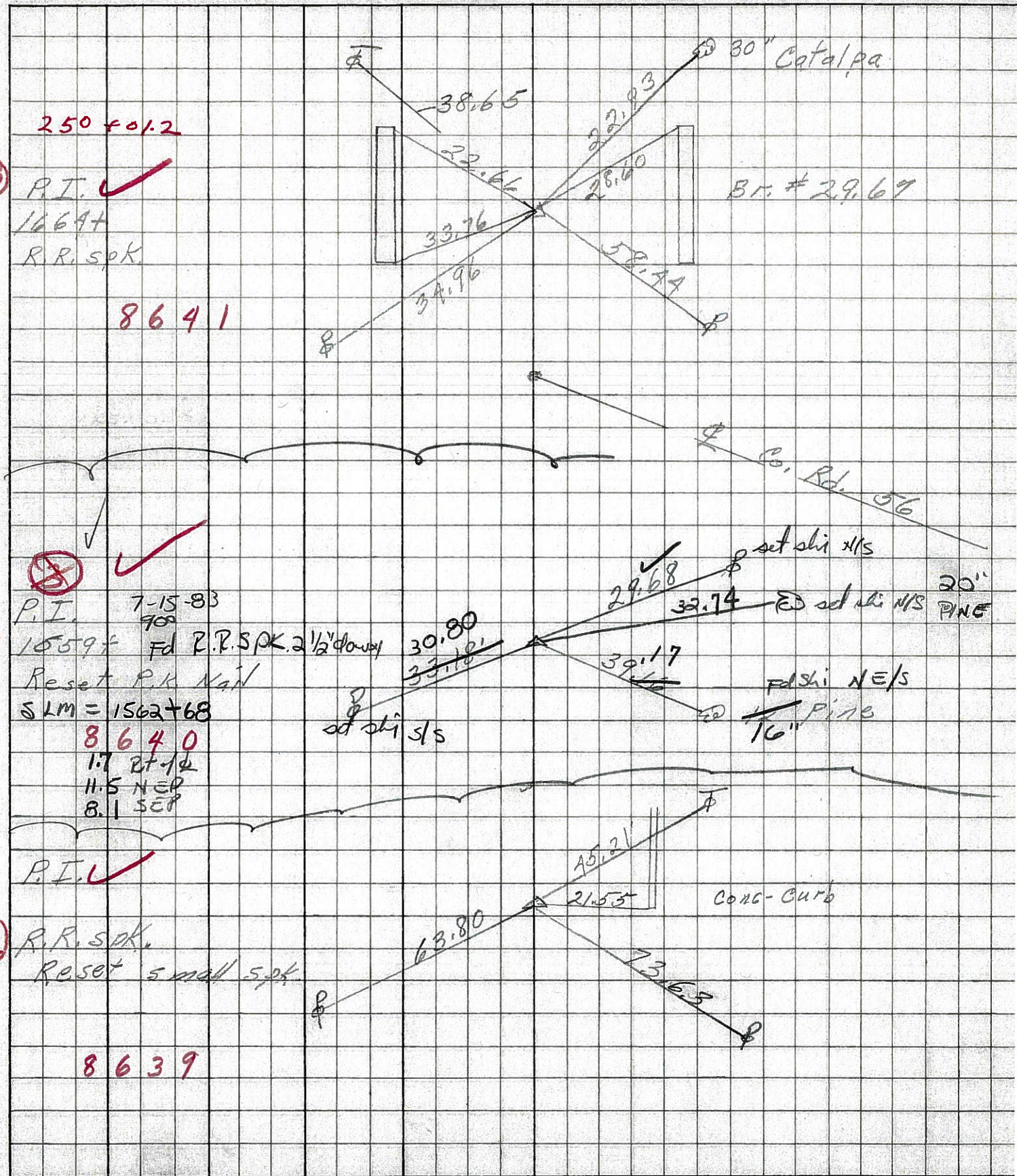
Ties for Control Points

JOB NO.

LEFT

CENTER LINE

RIGHT



250 ± 0.2

89-B

P.I. ✓

1669+

R.R. Spk.

8641

Br. #29.67

89

✓

P.I.

7-15-83

1559+

700

Fd R.R. Spk. 2 1/2' down

Reset P.K. Nail

SLM = 1562+68

8640

1.7 RT-12

11.5 NEP

8.1 SEP

set shi s/s

29.68

set shi N/S

32.74

ED set shi N/S

20" PINE

Fd shi NE/S

16" PINE

89

P.I. ✓

89-C

R.R. Spk.

Reset small Spk.

8639



PERSONNEL TITLE PERSONNEL TITLE

COUNTY Seneca DATE 1-12-66

S. R. U.S. #224 WEATHER

SEC. TEMP.

DESCRIPTION S.R. # 19 - Attica JOB NO.

LEFT CENTER LINE RIGHT

S.H. 272 Sec. Attica Part

251+00 7-15-83 +900

Same as 250+01.2  
Fd RR SPK @ surface

SLM 1567+29

1.0' Lt &

9.5 NEP

10.5 SEP

set shi N/S

30" stump

30" stump

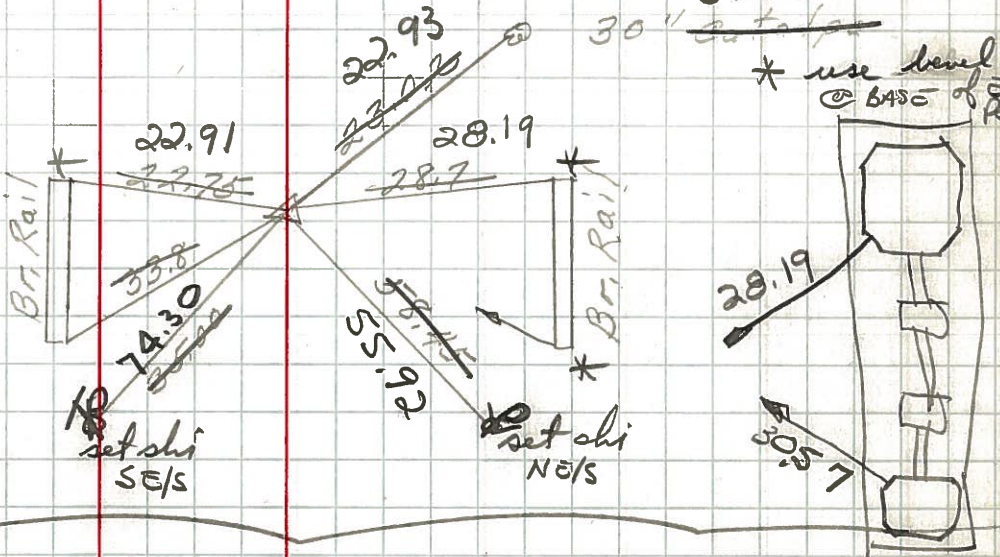
\* use level @ base of

89-B

250+01.2

R.R. spk → 22.91

203



7-15-83 900  
Fd PK @ surface

P.K. Nail

SLM 1564+01

OX & PAUT

202 A

10.4 NEP

10.1 SEP

set shi S/S

24.30

set shi N/S

23.28

29.84

set shi N/S 15" mhd

35.89

set shi N/S

Stump Pike Rd.



PERSONNEL	TITLE	PERSONNEL	TITLE
KrabiLL			
Kowaleski			
Brooks			

COUNTY Seneca DATE \_\_\_\_\_  
 S. R. 224 WEATHER \_\_\_\_\_  
 SEC. \_\_\_\_\_ TEMP. \_\_\_\_\_

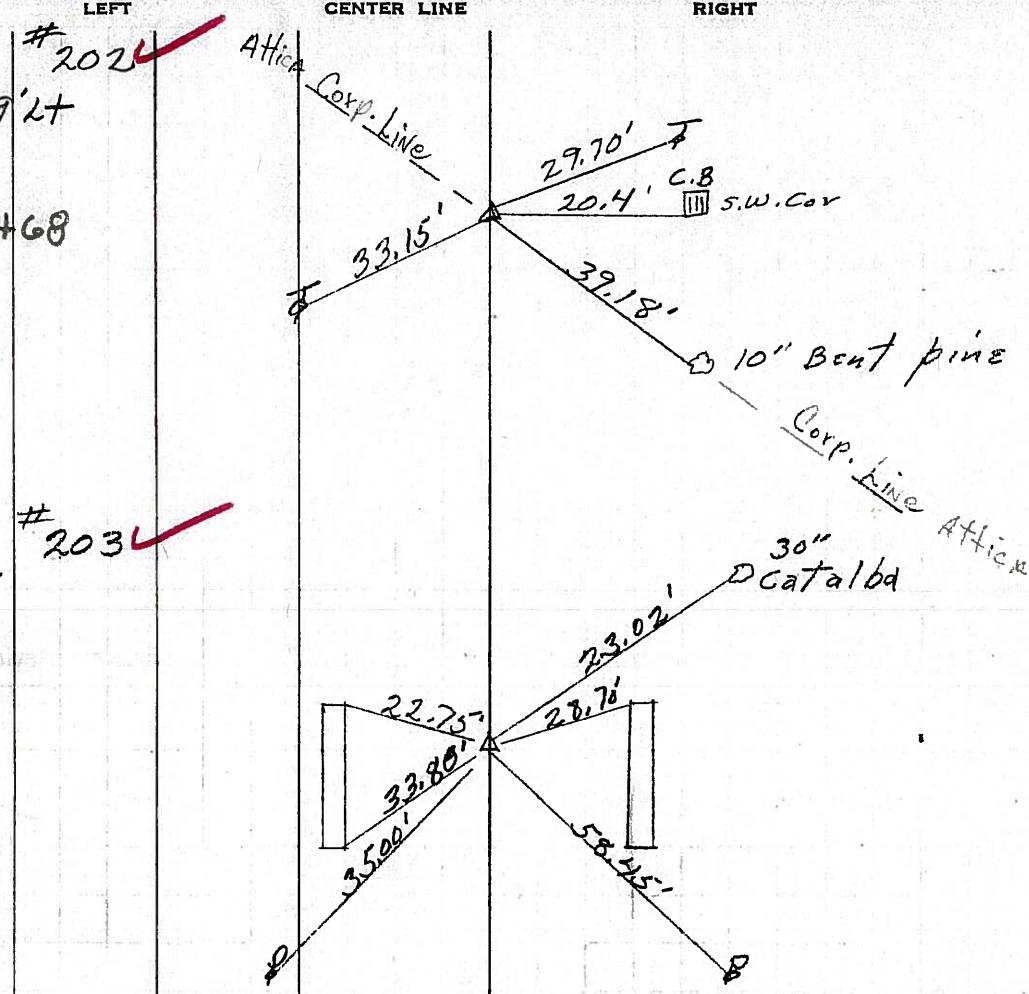
DESCRIPTION \_\_\_\_\_ LEFT \_\_\_\_\_ CENTER LINE \_\_\_\_\_ RIGHT \_\_\_\_\_ JOB NO. \_\_\_\_\_

16 sta 2+15+40.3  
 P.I. Δ=3°-49' Lt  
 R.R. spike  
 1562+68  
 1-8-64

16 sta 2+50+01.2  
 A=0°-0'  
 R.R. spike  
 1-8-64

89

89-B



250 ± 01  
 242 ± 00  
 8 ± 01

1567+29  
 - 4+61  
 1562+68

250 ± 01  
 245 ± 40  
 4 ± 61



PERSONNEL TITLE PERSONNEL TITLE

COUNTY Seneca DATE

KrabiLL  
Kowaleski  
Brooks

S. R. 224 WEATHER

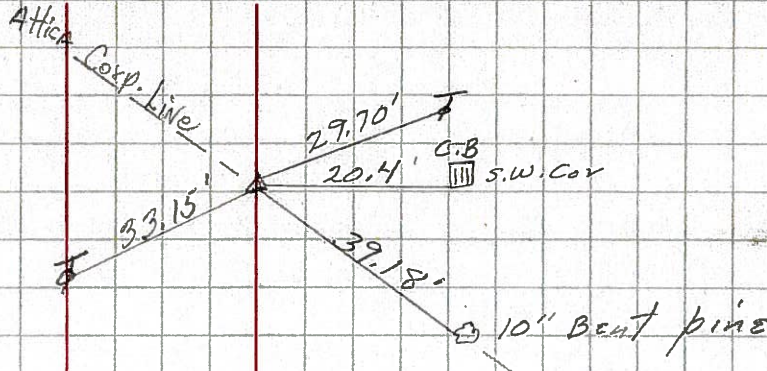
SEC. TEMP.

DESCRIPTION LEFT CENTER LINE RIGHT JOB NO.

old sta 245+40.3 #202  
P.I.  $\Delta=3^{\circ}49'21''$   
R.R. spike

89

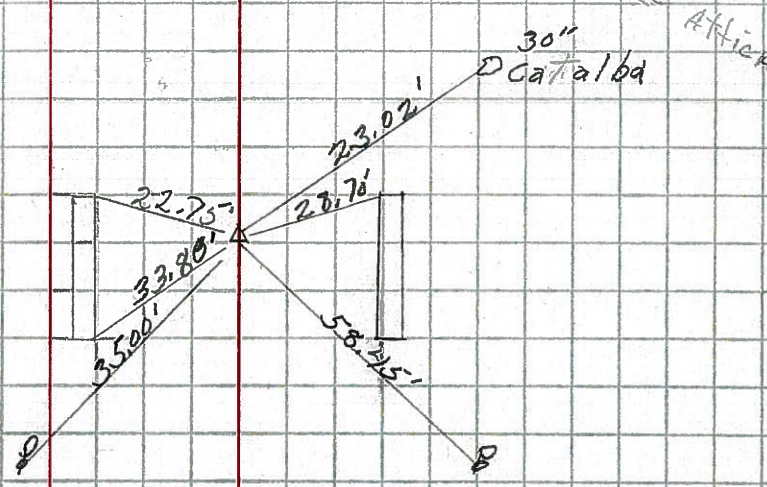
1-8-64



old sta 250+01.2 #203  
 $\Delta=0^{\circ}0'$   
R.R. spike

89-B

1-8-64





PERSONNEL TITLE PERSONNEL TITLE

COUNTY Seneca

DATE 10-11-49

S. R. #224

WEATHER

SEC. G-D-F-E

TEMP.

DESCRIPTION S.H. #272

LEFT

CENTER LINE

RIGHT

JOB NO.

88-C

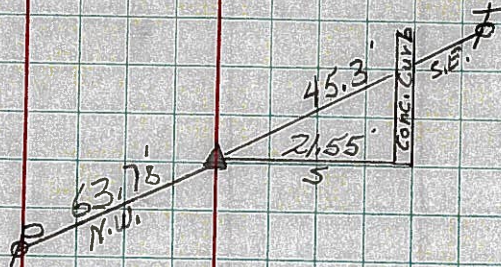
Sta. 241+99.6

$\Delta = 0^\circ - 08' Lt$

R.R. Spike on  $\frac{1}{2}$  R/W

6-26-59

Reset 8-10-59 #201



→ N

89

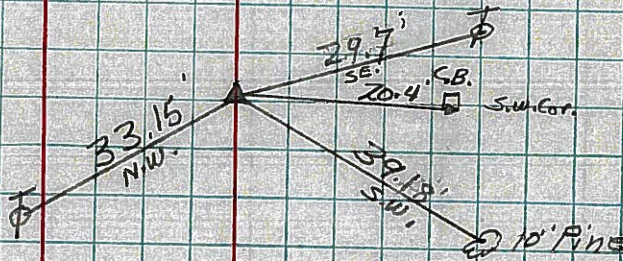
Sta. 245+40.3

$\Delta = 3^\circ - 49' Lt$

R.R. Spike on  $\frac{1}{2}$  R/W

6-26-59

Reset 8-10-59 #202



89-B

Sta. 250+01.2

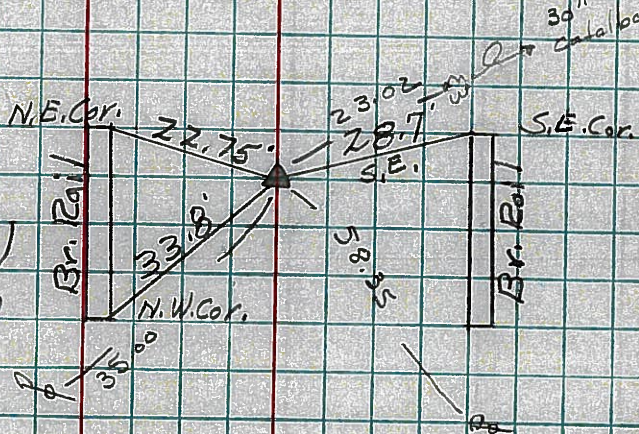
$\Delta = 0^\circ - 0'$

R.R. Spike on  $\frac{1}{2}$  R/W

End of Sec. F. = 251+00

Sec. Attica Part.

#203



Set Spike

$\Delta - 22 - 60$

Sta. 251+00

Same as 250+01.2 above

S.H. 272 Sec. Attica Part