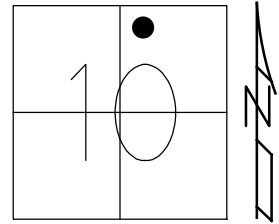


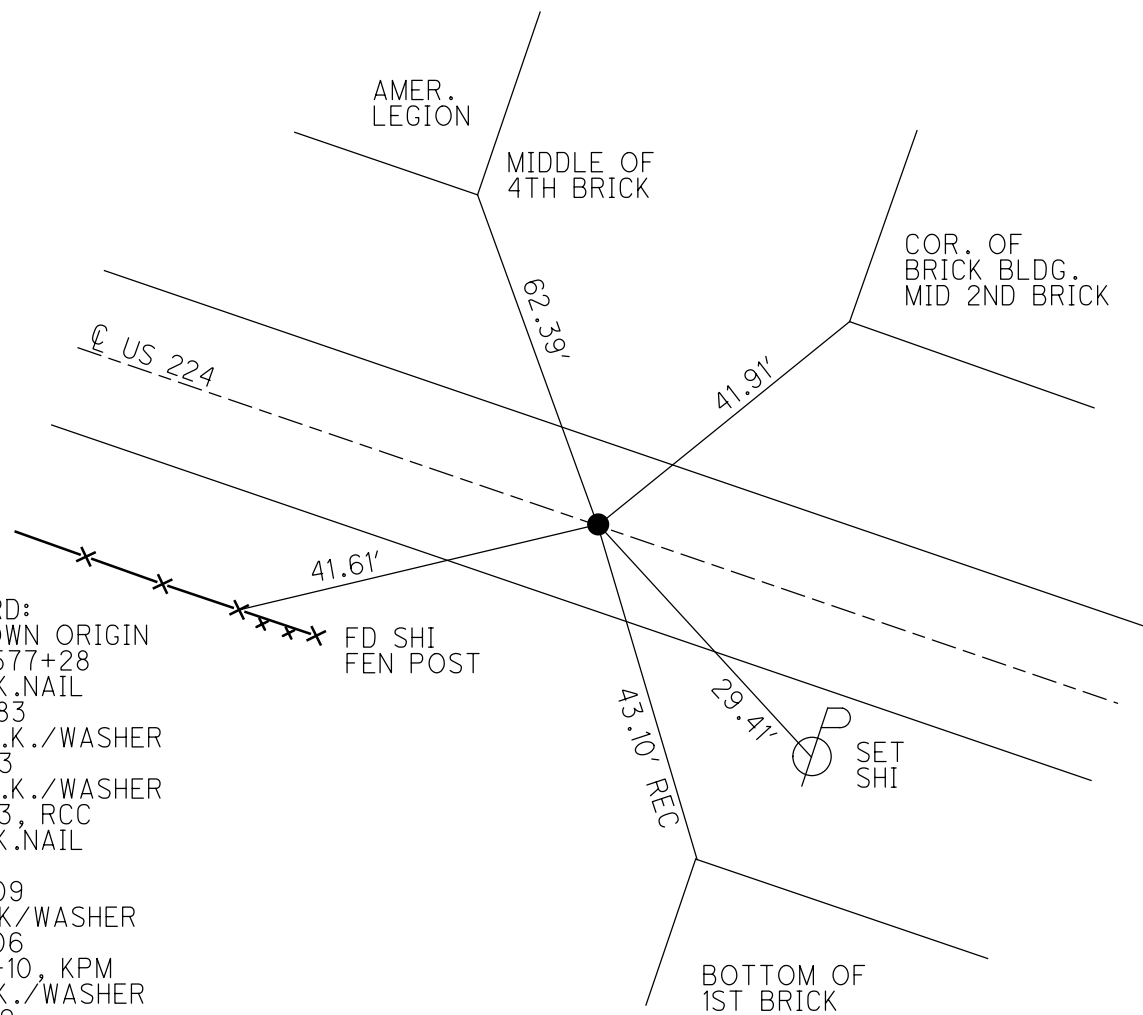
O.D.O.T. DISTRICT 2 SURVEY OFFICE (USE ONLY)

PERSONNEL _____ REFERENCE NO. 89 C SHEET 9 OF 16
 NOTES RHOADES DATE 5/24/17 ROUTE US 224
 H.C. O'DONNELL WEATHER CLOUDY COUNTY SENECA
 R.C. POORE TEMP. 62° TOWNSHIP VENICE
 DWG BY MILLER PID 102819 SECTION 10
 T 1 N R 17 E

TYPE MONUMENT P.K./WASHER
 ON SURFACE - ~~BELOW~~ ON
 OFFSET Q PAVEMENT ON LT : RT
25.75' TO RT EDGE PAVEMENT
 STATION: 1576+70.87



HORIZ.DATUM: NAD83 (2011) GEOID: NAVD88 2012A
 GRID: NORTHING: 509645.084 EASTING: 1861515.519

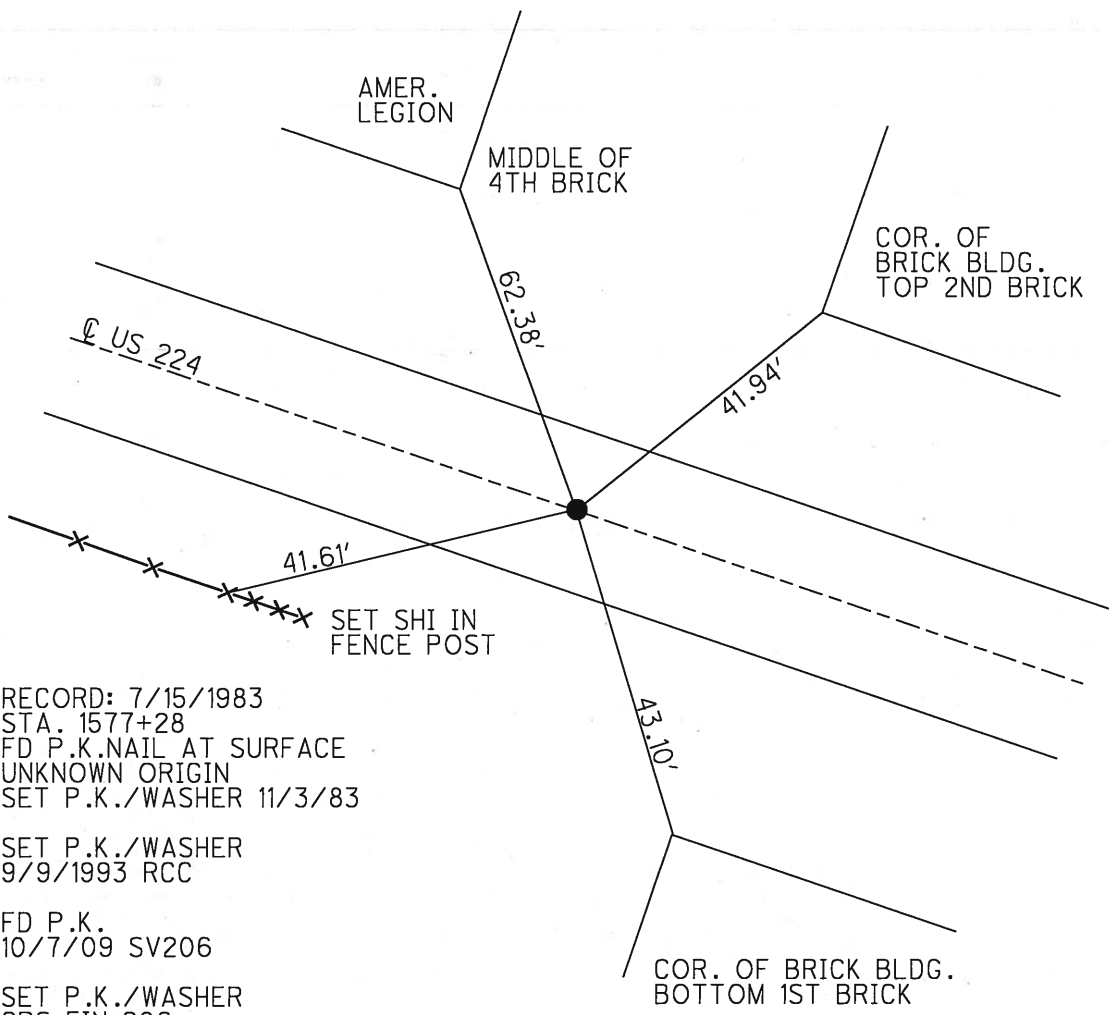
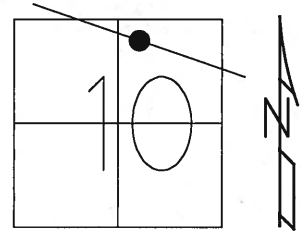


RECORD:
 UNKNOWN ORIGIN
 STA 1577+28
 FD P.K.NAIL
 7/15/83
 SET P.K./WASHER
 11-3-83
 SET P.K./WASHER
 9-9-93, RCC
 FD P.K.NAIL
 SV206
 10-7-09
 SET PK/WASHER
 FIN 206
 10-22-10, KPM
 FD P.K./WASHER
 REFC89
 5-24-17
 6-6-18, JFO

O.D.O.T. DISTRICT 2 SURVEY OFFICE (USE ONLY)

PERSONNEL _____ REFERENCE NO. 89 C SHEET 7 OF 13
 NOTES HARBAUGH DATE 8/16/10 ROUTE US 224
 H.C. MOSER WEATHER SUNNY COUNTY SENECA
 R.C. FINGER TEMP. 83° TOWNSHIP VENICE
 SECTION 10
 T 1 N R 17 E

TYPE MONUMENT P.K./WASHER
 ON SURFACE - ~~BELOW~~ ON
 LEFT - ☉ PAV'T - RIGHT ON
25.75' TO S EDGE OF CURB
 S.L.M. 1576+70.87
 GRID: NORTHING: 509645.118 EASTING: 1861515.434



RECORD: 7/15/1983
 STA. 1577+28
 FD P.K.NAIL AT SURFACE
 UNKNOWN ORIGIN
 SET P.K./WASHER 11/3/83

 SET P.K./WASHER
 9/9/1993 RCC

 FD P.K.
 10/7/09 SV206

 SET P.K./WASHER
 GPS FIN 206
 10/22/10 KPM

O.D.O.T. DISTRICT 2 SURVEY OFFICE

PERSONNEL

REFERENCE NO. 89-C

SHEET 7 OF 21

NOTES CHENEY

H.C. RIPPLE

R.C. BARBOUR

GEYMAN

DATE 7-19-1993

WEATHER Cloudy

TEMP. 80°

ROUTE #224

COUNTY SENECA

TOWNSHIP VENICE

SECTION 10

T. N R. 18E

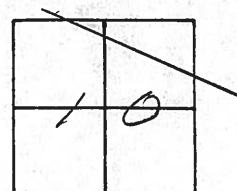
TYPE MONUMENT PK/WASHER

ON SURFACE - ~~BELOW~~ ON

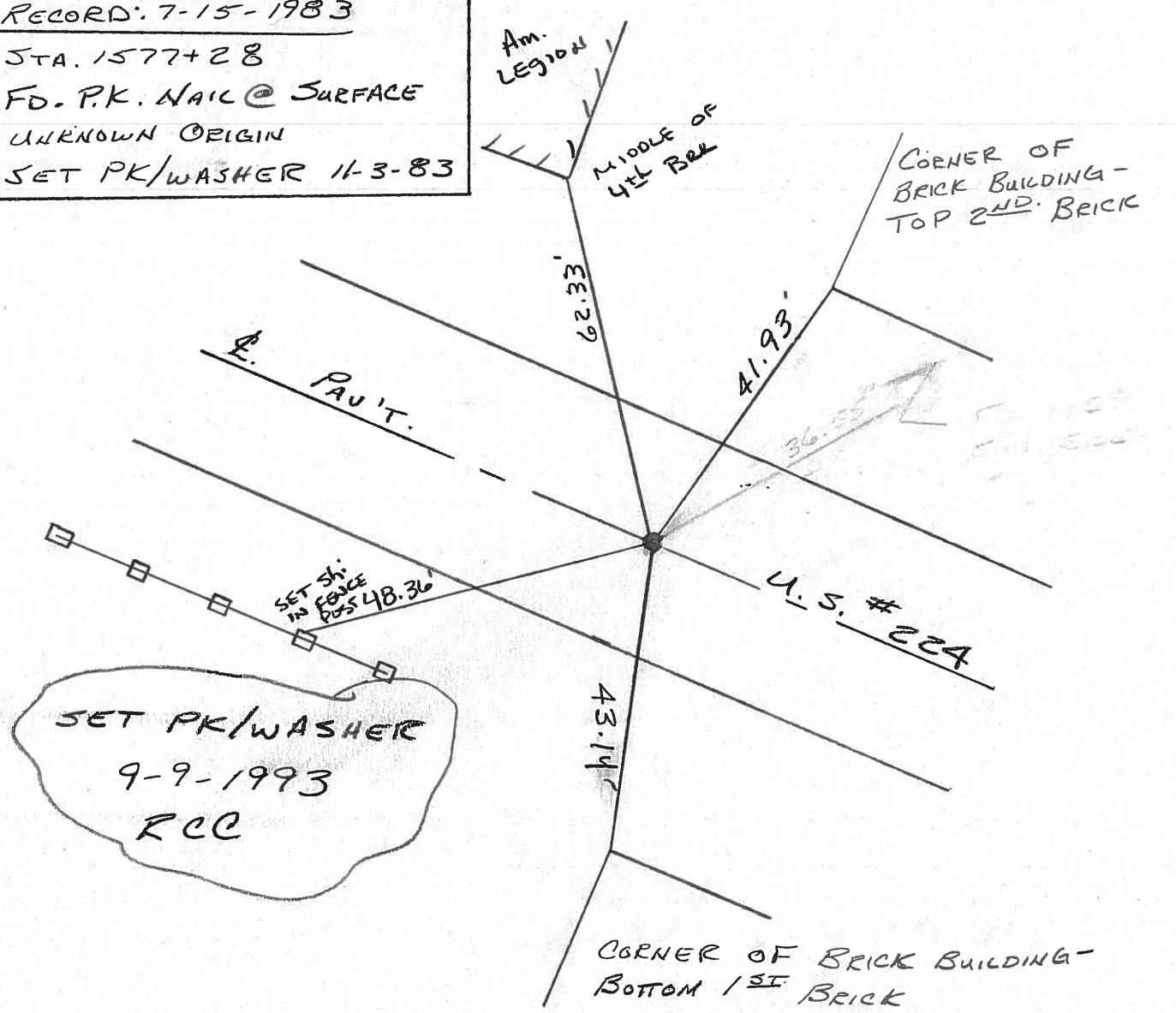
~~EAST - & PAV'T. - RIGHT~~ ON

~~28.25 N. CURB~~
~~25.75 S. CURB~~ TO EDGE PAVEMENT

S.L.M. 1523+37



RECORD: 7-15-1983
 STA. 1577+28
 FD. P.K. NAIL @ SURFACE
 UNKNOWN ORIGIN
 SET PK/WASHER 11-3-83



County SENECA S.R. U.S.-224

Date 7-15-83

Township _____

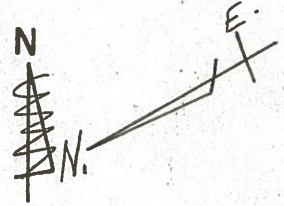
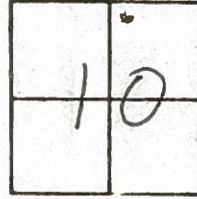
Weather CLEAR

Section _____

Temp. +90°

T N, R E

Personnel HOFFMAN



HOUSEHOLDER

89-0

LOEHRKE

BARNHISEL

S.L.M. 1577+28
FD. P.K. NAIL AT SURFACE
(ORIGIN UNKNOWN)

25.75 TO S. CURB

28.25 TO N. CURB

SET P.K./WASHER

11-3-83
S.W.H.

SHINER

36.55'

224

29.43'

SHINER

47.03

SET NAIL/SHINER
50' WEST OF
BRICK BLDG.
1' BACK FROM CURB

32.20'

SHINER

U.S.

PERSONNEL TITLE PERSONNEL TITLE

COUNTY Seneca

DATE 1/14/66

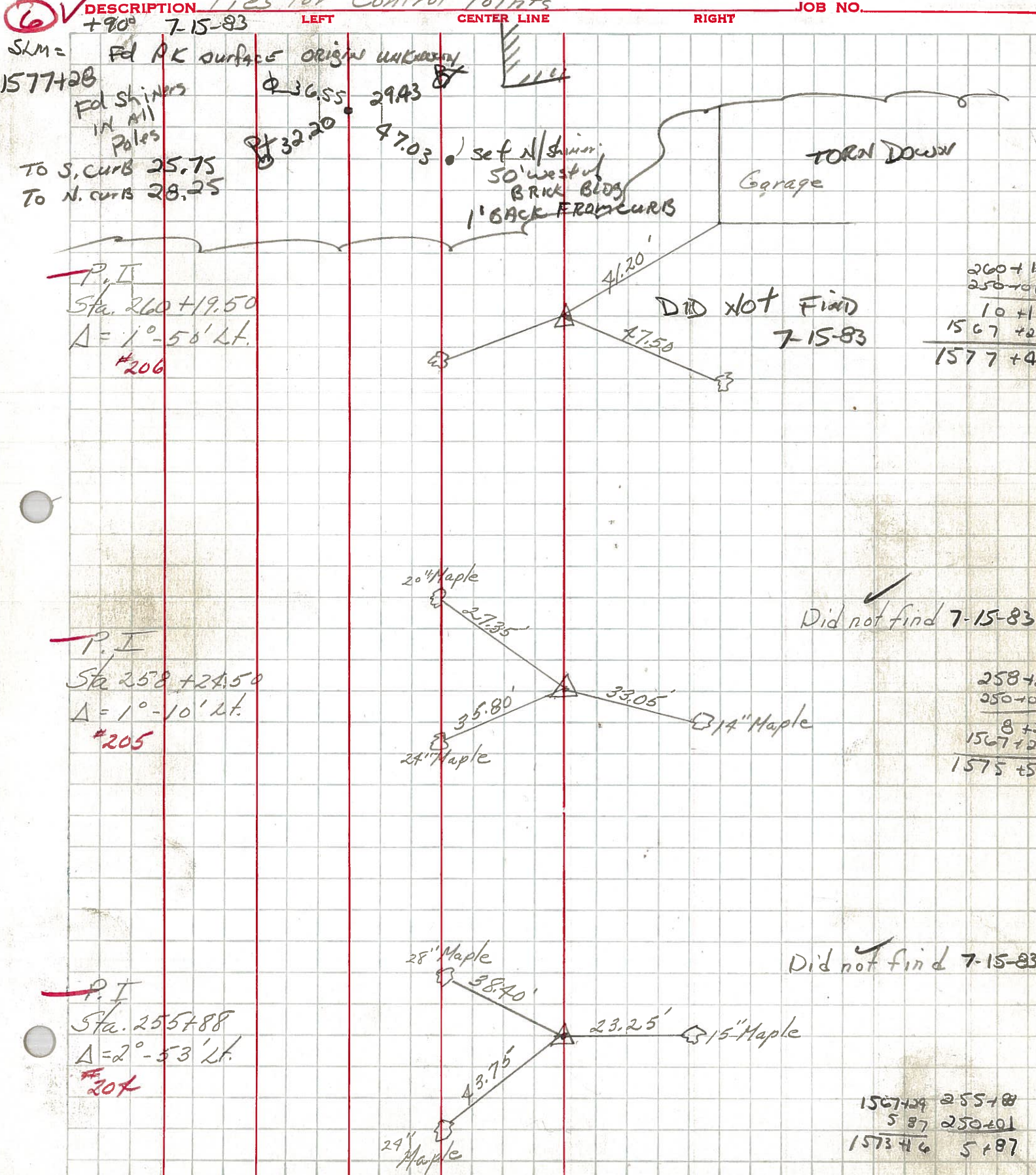
S. R. #224 (S.H. 272)

WEATHER

SEC. G-D-F-E (Sec. Attica Pt.)

TEMP.

DESCRIPTION Ties for Control Points



SKM =
1577+28
Fd PK surface origin UNKNOWN
Fd Shiners
IN ALL
Poles
To S. CURB 25.75
To N. CURB 28.25

P.I.
Sta. 260+19.50
 $\Delta = 1^\circ - 58' \text{ Lt.}$
#206

P.I.
Sta. 258+24.50
 $\Delta = 1^\circ - 10' \text{ Lt.}$
#205

P.I.
Sta. 255+88
 $\Delta = 2^\circ - 53' \text{ Lt.}$
#207

260+19
258+24
10+1
1567+2
1577+4

258+24
250+0
8+1
1567+2
1575+5

1567+29 255+88
5 87 250+01
1573+46 5+87