

O.D.O.T. DISTRICT 2 SURVEY OFFICE (USE ONLY)

PERSONNEL

REFERENCE NO. 90

SHEET 12 OF 16

NOTES RHOADES

DATE 5/24/17

ROUTE US 224

H.C. O'DONNELL

WEATHER CLOUDY

COUNTY SENECA

R.C. POORE

TEMP. 62°

TOWNSHIP VENICE

SECTION 10

DWG BY MILLER PID 102819

T 1 N R 17 E

TYPE MONUMENT P.K./WASHER

ON SURFACE - ~~BELOW~~ ON

OFFSET Q PAVEMENT 2' ~~LT:RT~~

13.3' TO RT EDGE PAVEMENT

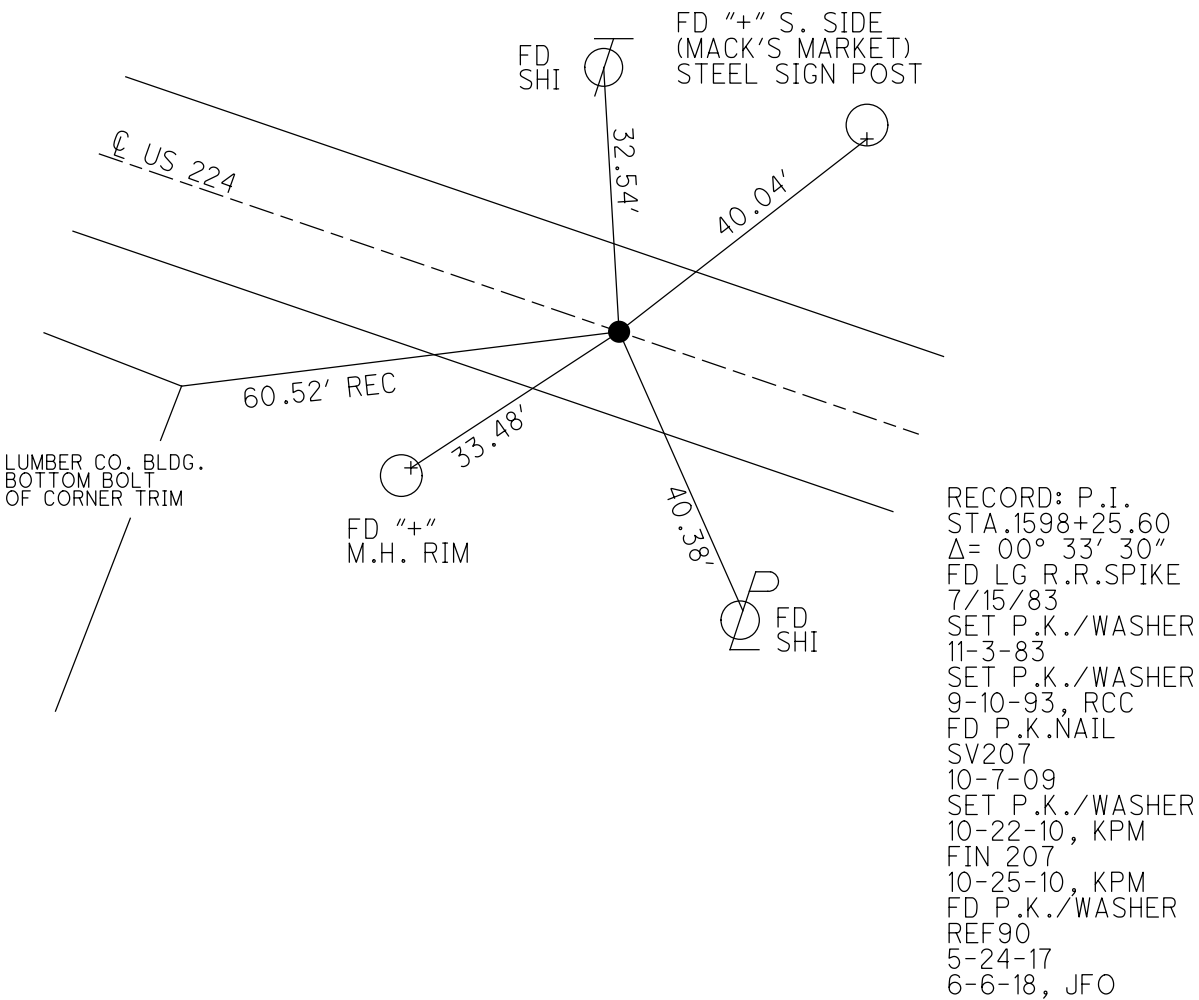
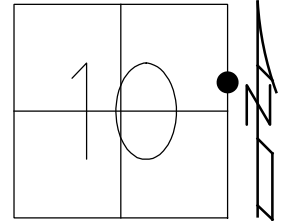
STATION: 1545+33

HORZ.DATUM: NAD83 (2011)

GEOID: NAVD88 2012A

GRID: NORTHING: 508752.744

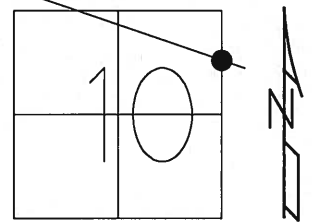
EASTING: 1863508.052



O.D.O.T. DISTRICT 2 SURVEY OFFICE (USE ONLY)

PERSONNEL _____ REFERENCE NO. 90 SHEET 9 OF 13
 NOTES HARBAUGH DATE 8/17/10 ROUTE US 224
 H.C. MOSER WEATHER CLOUDY COUNTY SENECA
 R.C. FINGER TEMP. 75° TOWNSHIP VENICE
 _____ SECTION 10
 _____ T 1 N R 17 E

TYPE MONUMENT P.K.NAIL
 ON SURFACE - ~~BELOW~~ ON
 LEFT - Q PAV'T - ~~RIGHT~~ 1.5'
10.5' TO LT EDGE PAVEMENT
 S.L.M. 1598+54.84



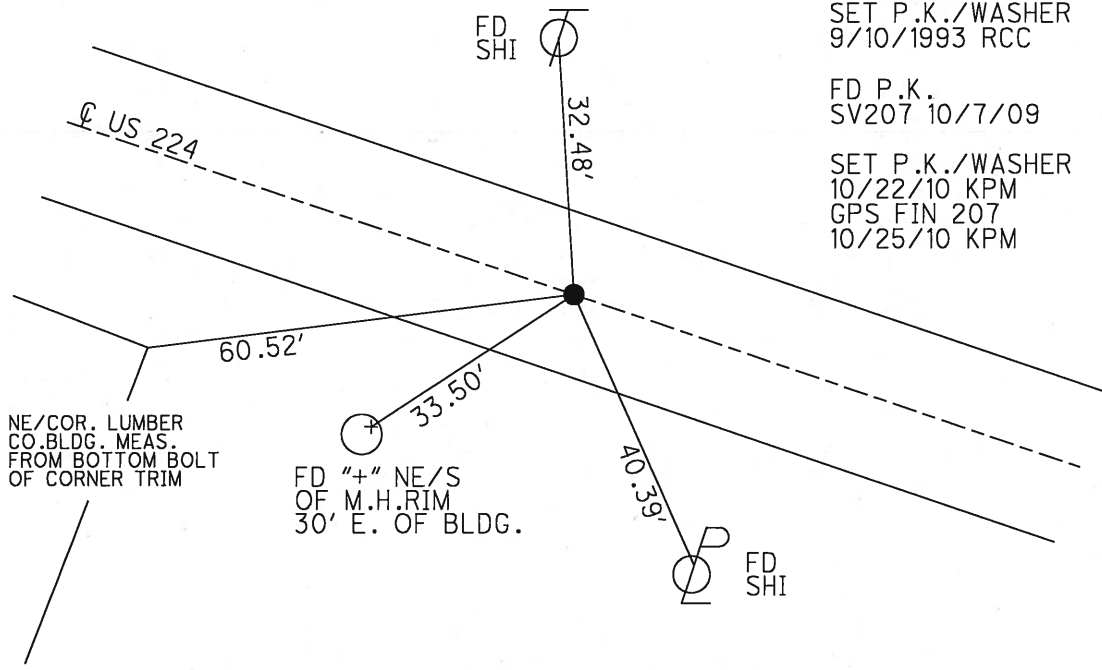
GRID: NORTHING: 508752.817 EASTING: 1863508.005

RECORD: 7/15/1983
 EAST CORP. LINE(?)
 P.I. STA: 1598+25.60
 $\Delta = 00^\circ 33' 30''$
 FD LG.R.R.SPIKE
 S.L.M. 1599+21

SET P.K./WASHER
 11/3/1983
 SET P.K./WASHER
 9/10/1993 RCC

FD P.K.
 SV207 10/7/09

SET P.K./WASHER
 10/22/10 KPM
 GPS FIN 207
 10/25/10 KPM



O.D.O.T. DISTRICT 2 SURVEY OFFICE

PERSONNEL

REFERENCE NO. 90

SHEET 8 OF 21

NOTES CHENEY

H.C. RIPPLE

R.C. BARBOUR

GEYMAN

DATE 7-19-1993

WEATHER CLOUDY

TEMP. 80°

ROUTE # 224

COUNTY SENECA

TOWNSHIP VENICE

SECTION 10

T. IN R. 18E

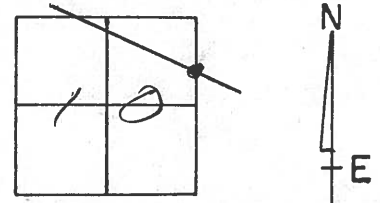
TYPE MONUMENT PK/WASHER

ON SURFACE - ~~BELOW~~ ON

LEFT- & PAV'T. - ~~RIGHT~~ 1'

^{12.0'} ^{N.} TO 5. EDGE PAVEMENT

S.L.M. 1545+33



RECORD: 7-15-1983

EAST CORP. LINE?

P.I. STA. 1598+25.60

$\Delta = 00^\circ 33' 30''$

FD. LG. RR. SPK.

SLM = 1599+21

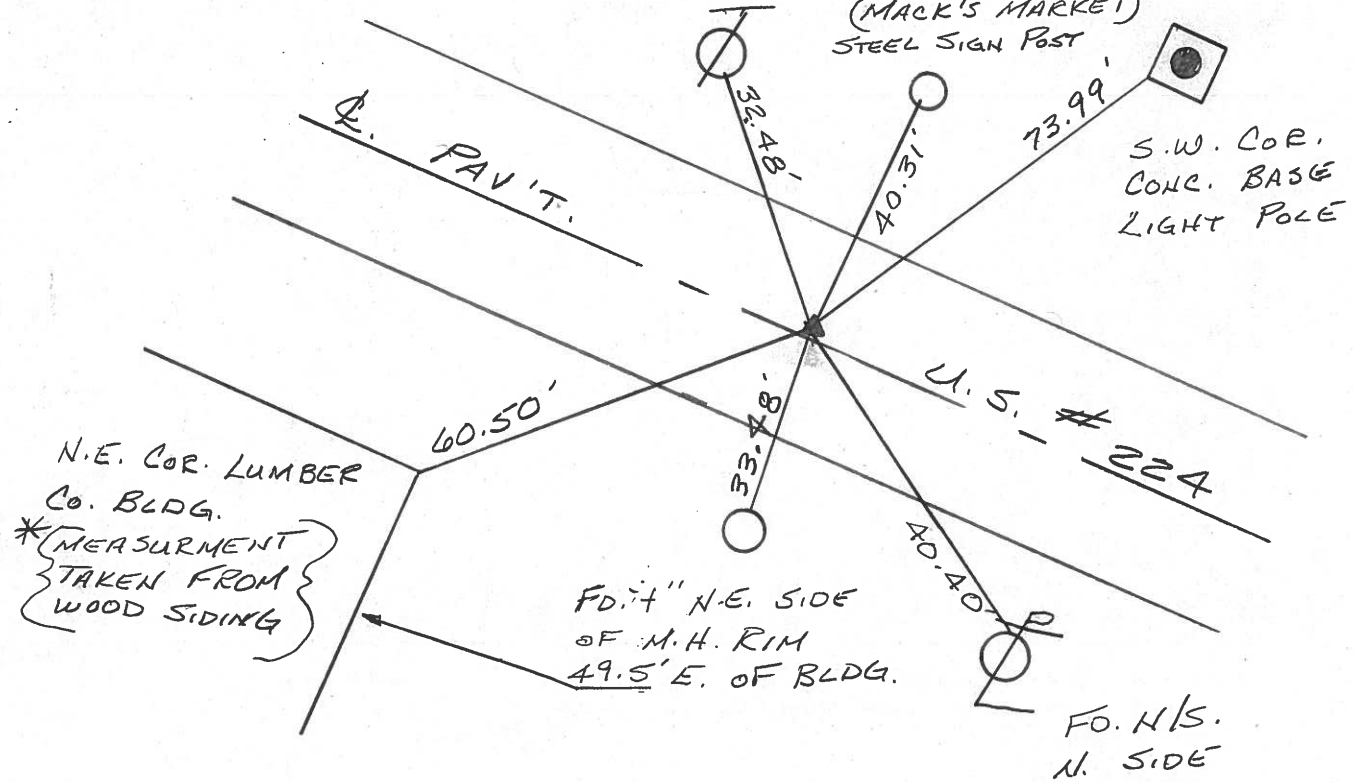
SET PK/WASHER
9-10-1993
RCC

SET PK/WASHER 11-3-83

SET N/S.
S.E. SIDE

FD. 4" S. SIDE
(MACK'S MARKET)
STEEL SIGN POST

S.W. COR.
CONC. BASE
LIGHT POLE



County SENECA ~~S.R.~~ U.S. 224

Date 7/15-83

Township VENICE

Weather CLEAR

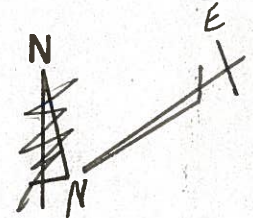
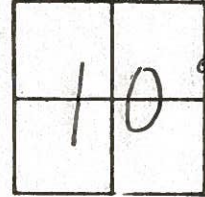
Section 10

Temp. +95°

T.N, R.E

Personnel HOFFMAN
HOUSE HOLDER
LOEHRKE
BARNHISEL

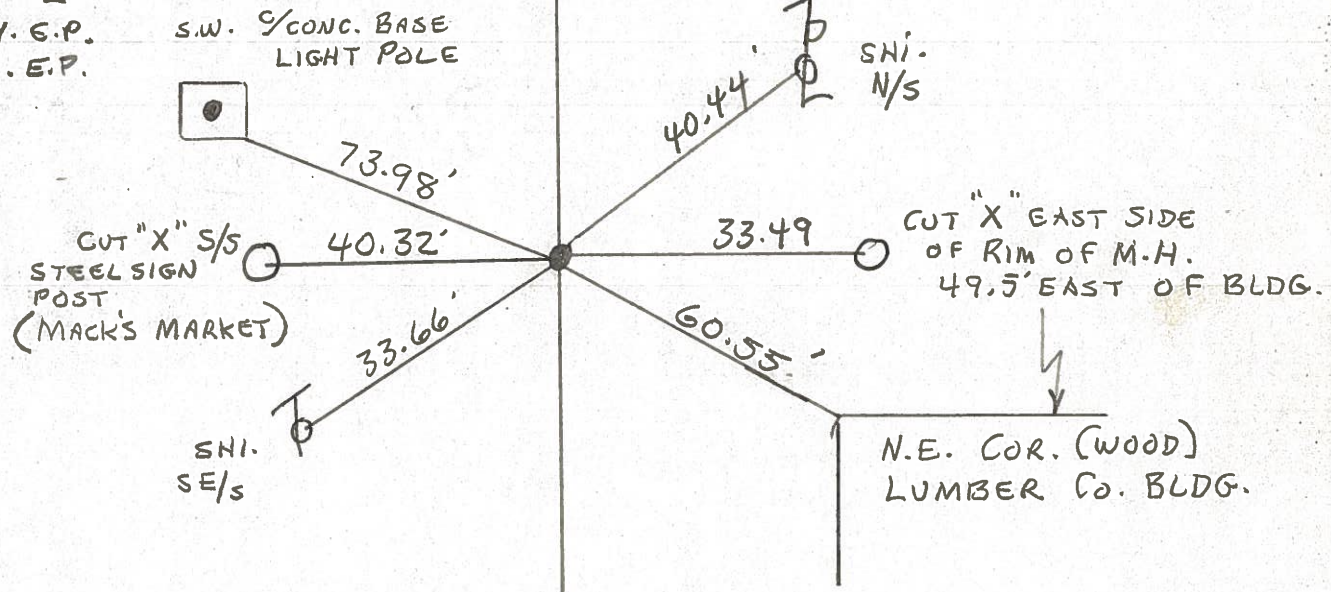
90



EAST CORP. LINE ?
 P.I. 1598+25.60
 $\Delta = 0^\circ - 33' - 30''$
 FD. LARGE R.R. SPK.
 S.L.M. 1599+21

SET P.K./WASHER
 11-3-83
 S.W.H.

1.0' LT. OF Φ
 12.0' TO N.E.P.
 13.3 TO S.E.P.



PERSONNEL TITLE PERSONNEL TITLE

COUNTY Seneca DATE 1-13-66

S. R. U.S. # 224 WEATHER

SEC. TEMP.

DESCRIPTION SR# 4 to Huron Co. Line JOB NO.

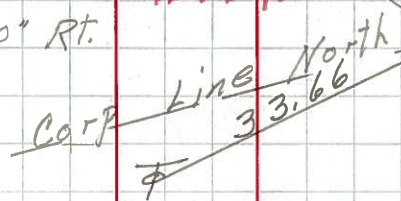
LEFT CENTER LINE RIGHT

Survey & Const.

90

P.I. 1598+25.60
Δ = 0° 33' 30" Rt.
R.R. spk.

S.L.M.



N.W. Cor. of Bldg.

N.E. Cor. Lumber Co.

207

8643

8642

S.R. # 4

PERSONNEL TITLE PERSONNEL TITLE

COUNTY Seneca DATE 1-18-66

S. R. U.S. # 224 WEATHER

SEC. TEMP.

DESCRIPTION SR#4 to Huron Co. Line

JOB NO.

LEFT

CENTER LINE

RIGHT

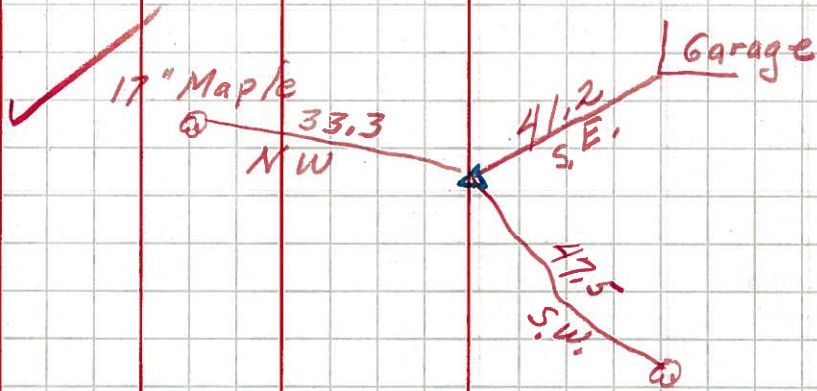
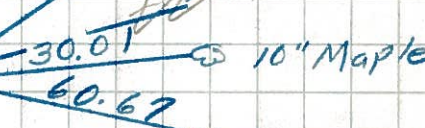
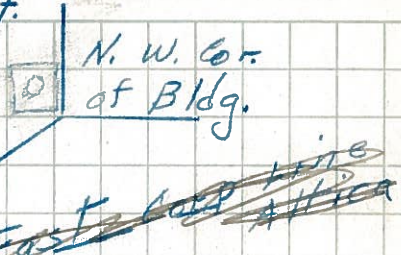
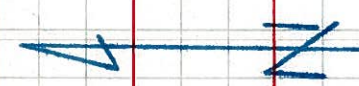
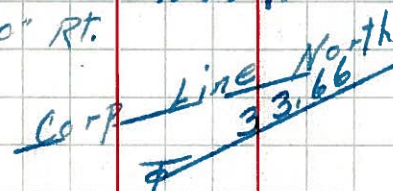
Survey & Const.

90

P.I. 1598+25.60
Δ = 0°33'30" Rt.
R.R. spk.

S.L.M.

207



PERSONNEL TITLE PERSONNEL TITLE

COUNTY Seneca

DATE 10-11-49

S. R. #224

WEATHER 4-28-58

SEC. G-D-F-E.

TEMP.

DESCRIPTION SH. #272

JOB NO.

LEFT

CENTER LINE

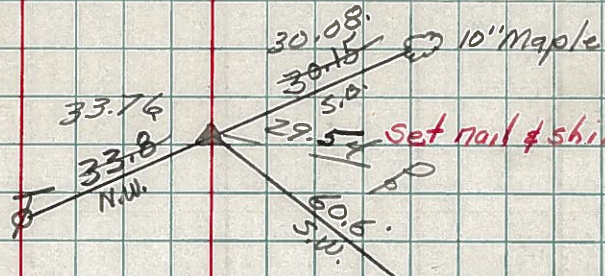
RIGHT

Sec. E. Start at East Corp
Line of Attica East To
Huron Co. Line



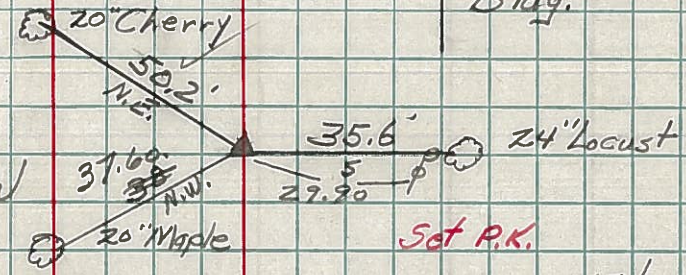
90

Sta. 283+00
R.R. Spike on & R/w
& of 32' Brick Punt.
1598+25.6 S.L.D.
#207



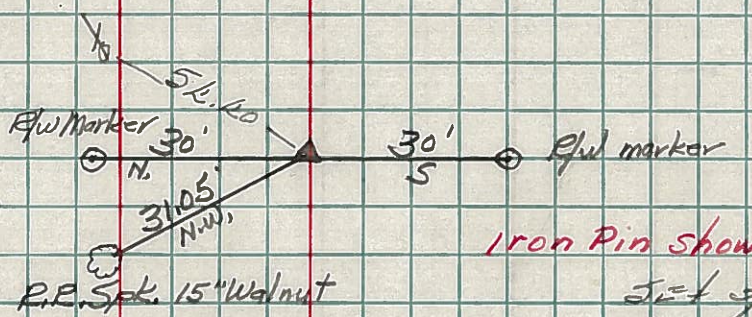
90-A

Sta. 294+10.9
 $\Delta = 0^{\circ}-0'$
R.R. Spikes end of R/w
1609+36.5 #208



91

Sta. 297+58.9
 $\Delta = 1^{\circ}-22' Lt.$
R.R. Spike on & R/w
1612+84.5 #209



91-B

Sta. 312+35.1
 $\Delta = 1^{\circ}-33' Lt.$
R.R. Spk. on & R/w
1627+60.7 #210

