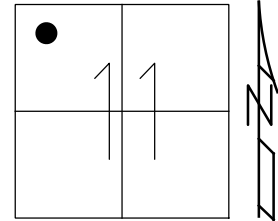


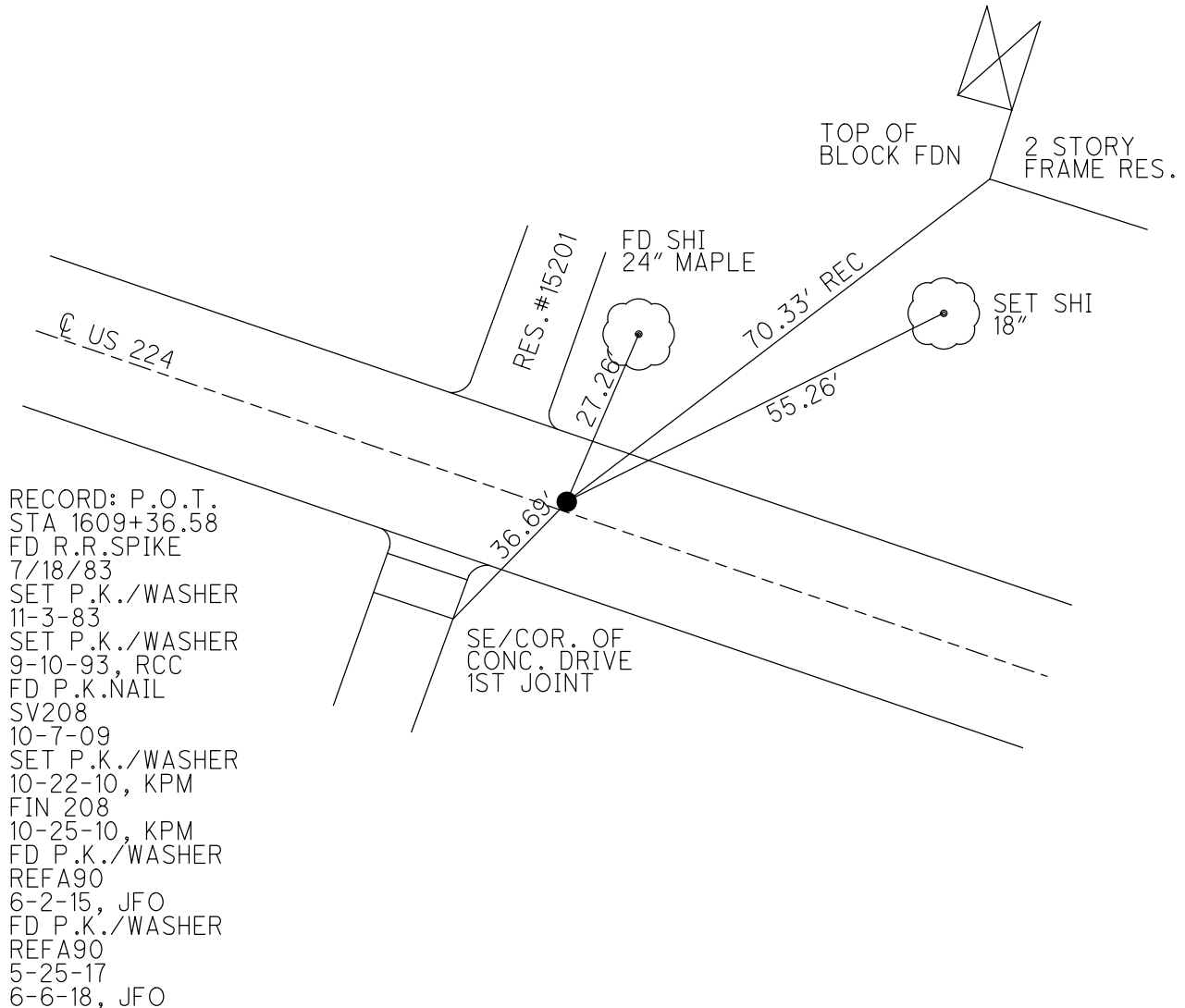
O.D.O.T. DISTRICT 2 SURVEY OFFICE (USE ONLY)

PERSONNEL _____ REFERENCE NO. 90 A SHEET 13 OF 16
 NOTES RHOADES DATE 5/25/17 ROUTE US 224
 H.C. O'DONNELL WEATHER PTLY CLOUDY COUNTY SENECA
 R.C. POORE TEMP. 61° TOWNSHIP VENICE
 DWG BY MILLER PID 102819 SECTION 11
 T 1 N R 18 E

TYPE MONUMENT P.K./WASHER
 ON SURFACE - ~~BELOW~~ ON _____
 OFFSET \varnothing PAVEMENT 2.5' LT : ~~RT~~
11.5' TO LT EDGE PAVEMENT
 STATION: 1556+47



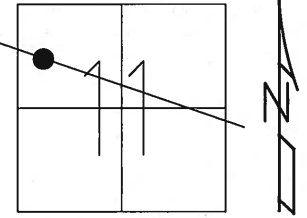
HORIZ.DATUM: NAD83 (2011) GEOID: NAVD88 2012A
 GRID: NORTHING: 508243.215 EASTING: 1864495.300



O.D.O.T. DISTRICT 2 SURVEY OFFICE (USE ONLY)

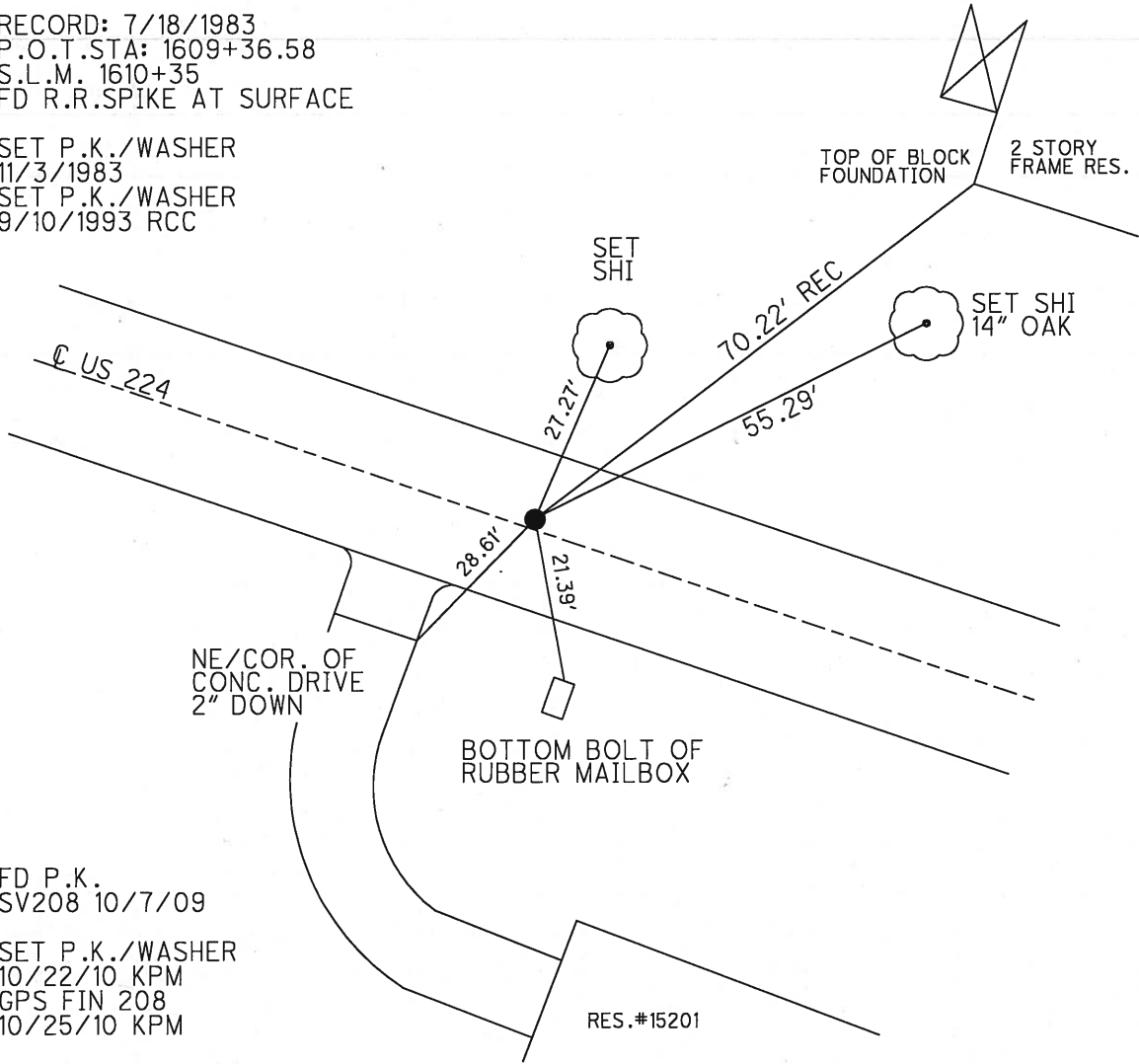
PERSONNEL	REFERENCE NO.	90 A	SHEET	10	OF	13
NOTES	HARBAUGH	DATE	8/17/10	ROUTE	US 224	
H.C.	MOSER	WEATHER	CLOUDY	COUNTY	SENECA	
R.C.	FINGER	TEMP.	75°	TOWNSHIP	VENICE	
				SECTION	11	
				T	1	N
				R	17	E

TYPE MONUMENT P.K.NAIL
 ON SURFACE - ~~BELOW~~ ON
 LEFT - PAV'T - ~~RIGHT~~ 2.2'
10.6' TO LT EDGE PAVEMENT
 S.L.M. 1609+68.92
 GRID: NORTHING: 508243.204 EASTING: 1864495.261



RECORD: 7/18/1983
 P.O.T.STA: 1609+36.58
 S.L.M. 1610+35
 FD R.R.SPIKE AT SURFACE

SET P.K./WASHER
 11/3/1983
 SET P.K./WASHER
 9/10/1993 RCC



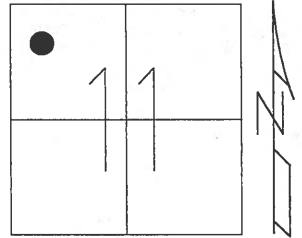
FD P.K.
 SV208 10/7/09

SET P.K./WASHER
 10/22/10 KPM
 GPS FIN 208
 10/25/10 KPM

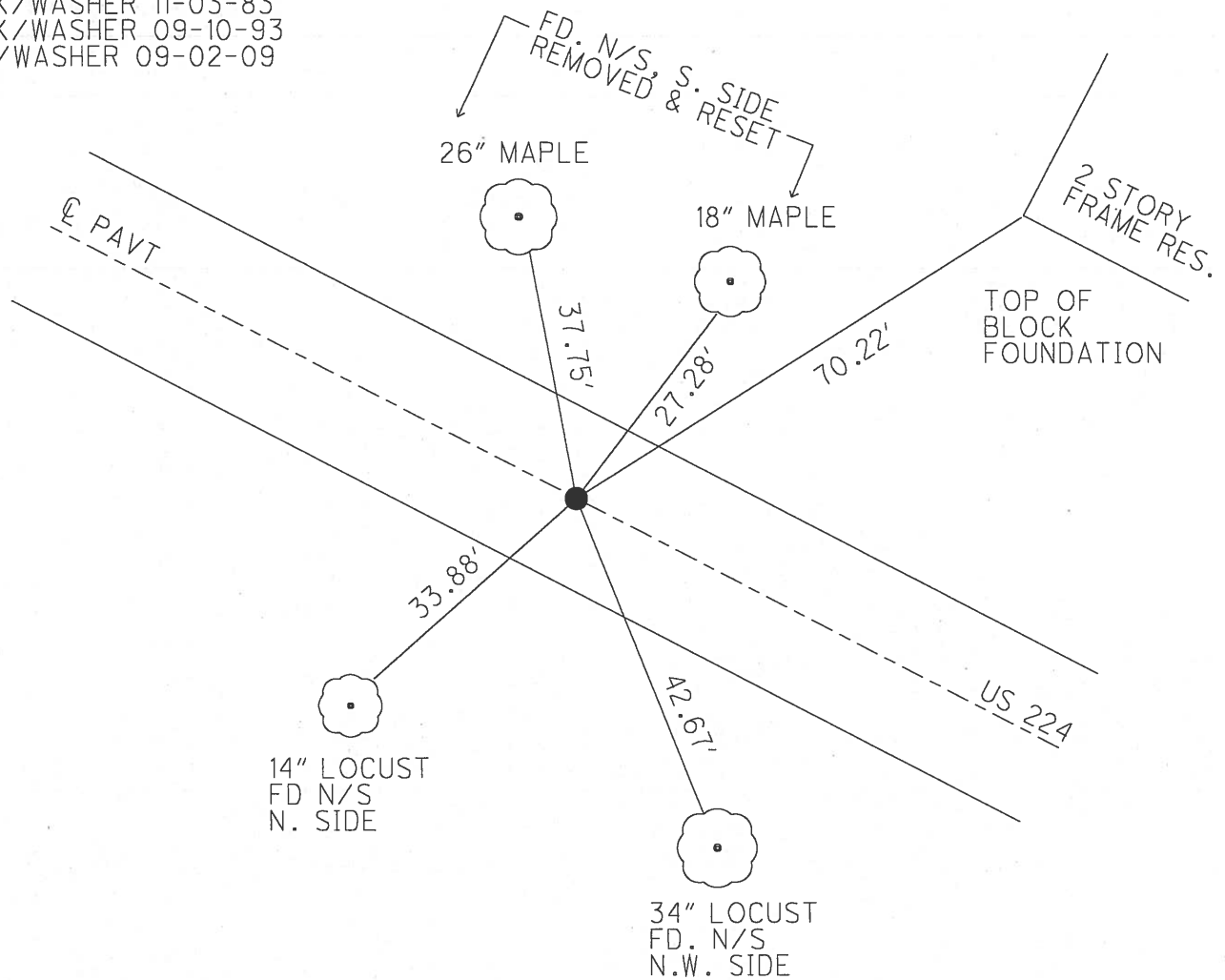
O.D.O.T. DISTRICT 2 SURVEY OFFICE (USE ONLY)

PERSONNEL	REFERENCE NO. <u>90-A</u>	SHEET <u>3</u> OF <u>6</u>
NOTES <u>CHENEY</u>	DATE <u>07-19-93</u>	ROUTE <u>224</u>
H.C. <u>RIPPLE</u>	WEATHER <u>CLOUDY</u>	COUNTY <u>SENECA</u>
R.C. <u>BARBOUR</u>	TEMP. <u>80°</u>	TOWNSHIP <u>VENICE</u>
<u>GEYMAN</u>		SECTION <u>11</u>
		T <u>1</u> N R <u>18</u> E

TYPE MONUMENT _____ PK/WASHER _____
 ON SURFACE - BELOW _____ ON _____
 LEFT - Q PAV'T - RIGHT _____ 1' _____
11.5' TO LT EDGE PAVEMENT
 S.L.M. _____ 1556+47
 Grid: Northing: _____ Easting: _____



RECORD: 07-18-83
 P.O.T. STA. 1609+36.58
 S.L.M. 1610+35
 FD. RR SPK @ SURFACE
 SET PK/WASHER 11-03-83
 SET PK/WASHER 09-10-93
 FD PK/WASHER 09-02-09



O.D.O.T. DISTRICT 2 SURVEY OFFICE

PERSONNEL

REFERENCE NO. 90-A

SHEET 9 OF 21

NOTES CHENEY

H.C. RIPPLE

DATE 7-19-1993

ROUTE #224

R.C. BARBOUR

WEATHER CLOUDY

COUNTY SENECA

GEYMAN

TEMP. 80°

TOWNSHIP VENICE

SECTION 11

T. 1 N. R. 18E

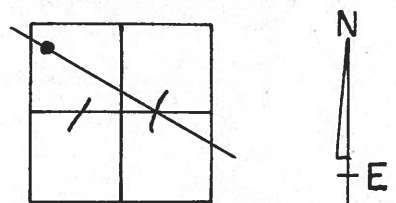
TYPE MONUMENT PK/WASHER

ON SURFACE - ~~BELOW~~ ON

LEFT - 0 PAV'T. - ~~RIGHT~~ 1'

11.5' TO LT. EDGE PAVEMENT

S.L.M. 1556+47



RECORD: 7-18-1983

P.O.T. STA. 1609+36.58

SLM. 1610+35

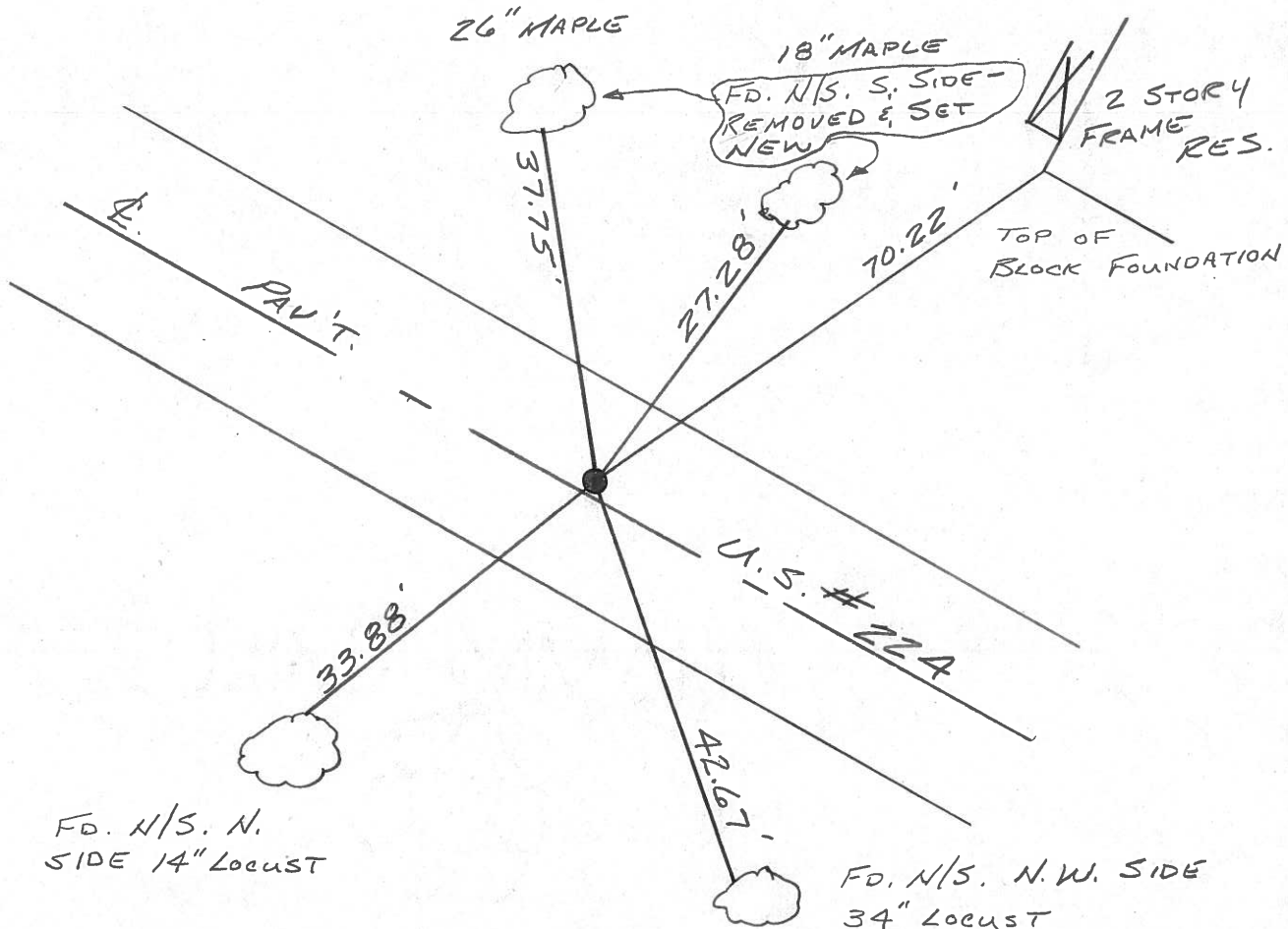
FD. RR. SPK. @ SURFACE

SET PK/WASHER 11-3-83

SET PK/WASHER

9-10-1993

RCC



County SENECA ~~SR~~ U.S. 224

Township VENICE

Section 11

T N, R E

Personnel HOFFMAN

HOUSEHOLDER

LOEHRKE

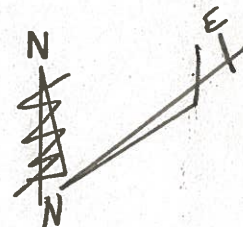
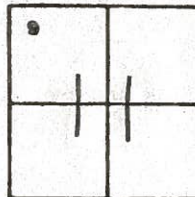
BARNISER

90-A

Date 7-18-83

Weather CLEAR

Temp. + 95°



FD. R.R. SPK. @ SURFACE

P.O.T. 1609+36.58

S.L.M. 1610+35

SET P.K/WASHER
11-3-83
S.W.H.

16" MAPLE
3HI.
S/S 27.37'

24" MAPLE
5HI.
S/S 37.81'

224

U.S.

42.70'

34" LOCUST
5HI. N/S

33.88'

SET. 5HI.
N/S 14" LOCUST

PERSONNEL TITLE PERSONNEL TITLE

COUNTY Seneca DATE 1-13-66

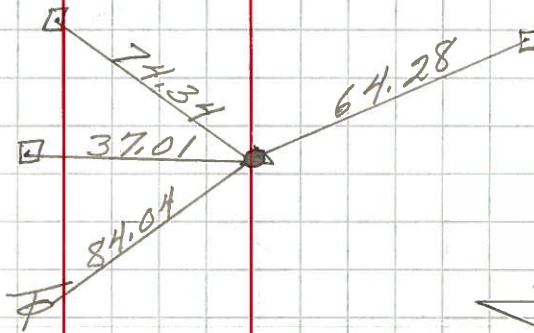
S. R. U.S. # 224 WEATHER

SEC. TEMP.

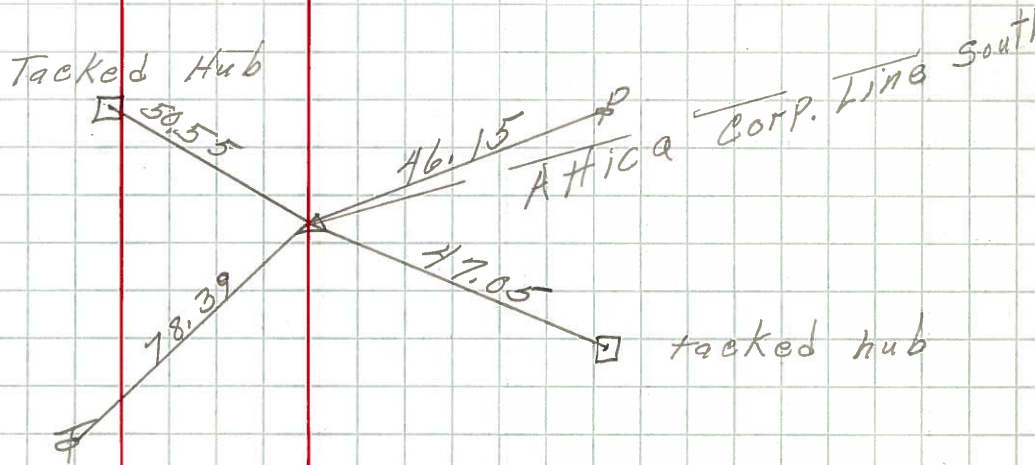
DESCRIPTION Attica - Huron Co Line JOB NO.

LEFT CENTER LINE RIGHT

91-A
 P.O.T.
 1622 + 78.07
 R.R. SPK.
 8646

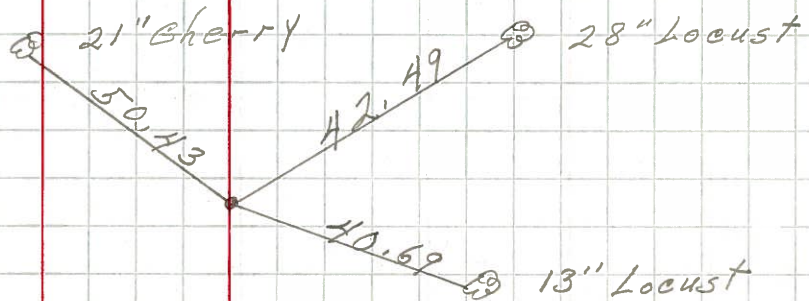


91
 P.I.
 1612 + 83.64
 $\Delta = 1^\circ 23' Lt.$
 R.R. SPK.
 209



8645

90-A
 P.O.T.
 1609 + 36.58
 R.R. SPK.



208 8644

PERSONNEL TITLE PERSONNEL TITLE

COUNTY Seneca DATE 1-13-66

S. R. U.S. # 224 WEATHER

SEC. TEMP.

DESCRIPTION Attica - Huron Co Line JOB NO.

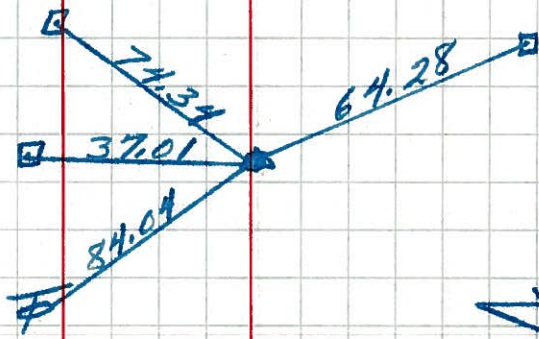
LEFT

CENTER LINE

RIGHT

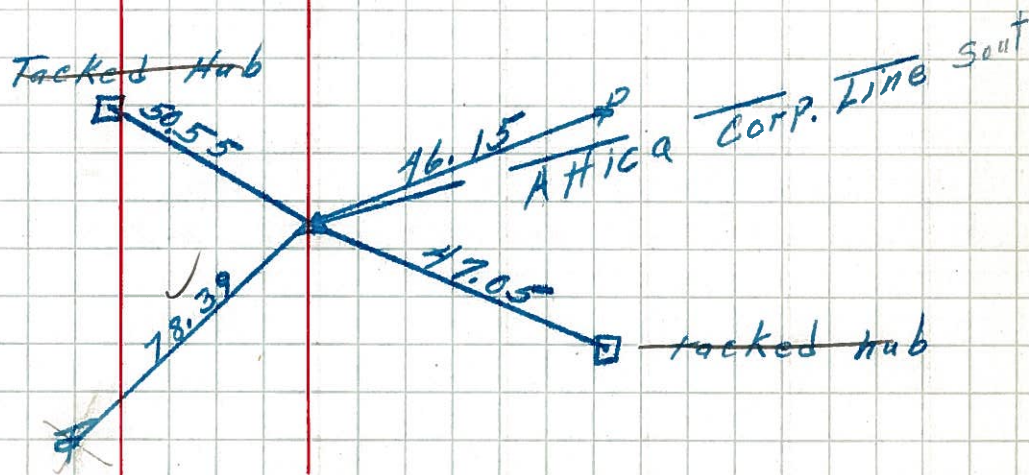
91-A

P.O.T.
✓ 1622 + 78.07
R.R. SPK.



91

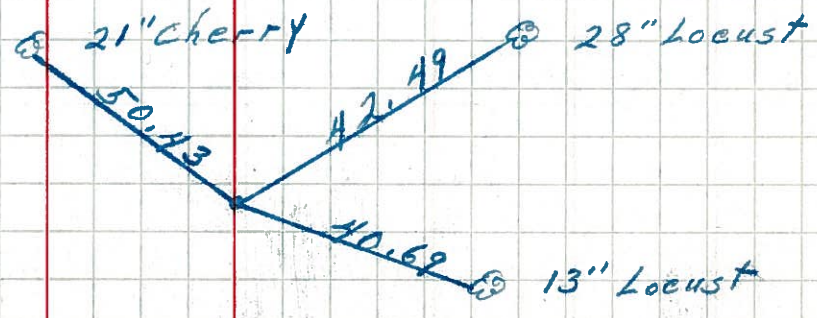
P.I.
✓ 1612 + 83.64
 $\Delta = 1^\circ 23' Lt.$
R.R. SPK.



209

90-A

P.O.T.
✓ 1609 + 36.58
R.R. SPK.



208

PERSONNEL

TITLE

PERSONNEL

TITLE

Cronin
Barbour
Ripple

Schneider
Wasser

COUNTY Seneca

DATE Aug. 1/63

S. R. #224

WEATHER

SEC Attica East to Co. Line

TEMP

DESCRIPTION

Ties for Control Points

LEFT

CENTER LINE

RIGHT

JOB NO.

* All points plumbed

90

East Corp. Line

P.I.

1598+25.60

$\Delta = 0^\circ 33' 30''$

Found small R.R. Spk.

Fd LARGE RR Spk.

s.w. base
like Ast

cut "t"
S/S
steel sign post
(MACK'S MARKING)

40.32

72.98
35.71
66

Fd
Shi
S/S



out
N. on office Bldg.

40.94

set Shi
N/S

33.49

7-15-83 +75

SLM: 1599+21
EAST SIDE 1.0' Lt & Prof
of RM of MH 12.0' TO N EP
49.5' EAST of BLDG 13.3' TO S EP

90-A

7-18-83 +75

Fd RR Spk @ surface

1.6' Lt &

14.0' NCP

13.7' SCP

P.O.T.

1609+36.58

Set P.K. Nail

1609+36
1598+25
R1 +11
599+21
OR 0+32

SLM 1610+35

2" Cherry

16" maple

set Shi S/S

24" maple
set Shi S/S

37.81

42.70

72.98

33.88

59
40.94

28" Locust

34" set Shi N/S

14" Locust
EP set Shi N/S

15" Locust
14" Fd Shi N/S

91

7-18-83 +75

2' Lt & 11.0'

NCP 13.5

P.I.

1612+83.04

$\Delta = 1^\circ 23' Lt$

1622+78
1612+83
9+25
1613+85
65+80

P.O.T.

1622+78.07

Set P.K. Nail

SLM 1623+80

1.6' Lt &

10.3' NCP

14.3' SCP

SLM 1613+85

Fd RR Spk surface

T. HUB 43.46

R/W Mark

29.87

R/W Mark

78.39

out
Fd Shi S/S

46.22

71.94

39.89

R/W Mark

47.86

set Shi
H/S

7-18-83 +75

Fd RR Spk on surface

FIELD

set PK
top of 12" cap

41.02

37.48

27.27

27.56

CORP
LIKE

PERSONNEL TITLE PERSONNEL TITLE

COUNTY Seneca

DATE 10-11-49

S. R. #224

4-28-58

WEATHER

SEC. C-D-F-E

TEMP.

DESCRIPTION S.H. #272

LEFT

CENTER LINE

RIGHT

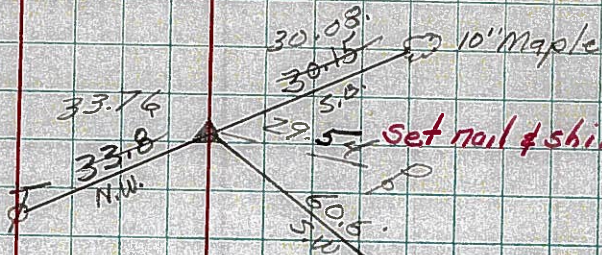
JOB NO.

Sec. E. Start at East Corp
line of Attica East to
Huron Co. Line



90

Sta. 283+00
R.R. Spike on & R/W
of 32' Brick Punt
1598+25.6 S.L.D.
#207

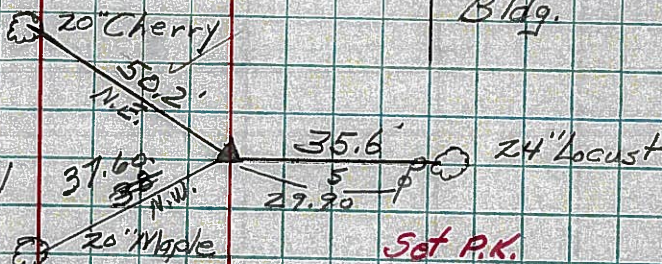


Set spike
4-22-60

N.E. Cor
Lumber Co.
Bldg.

90-A

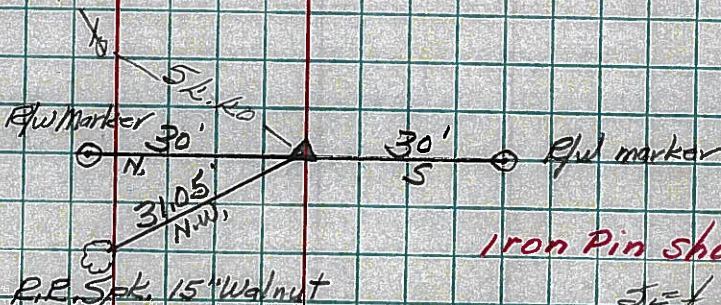
Sta. 294+10.9
 $\Delta = 0^{\circ}-0'$
R.R. Spike on & of R/W
1609+36.5 #208



Set spike
4-22-60

91

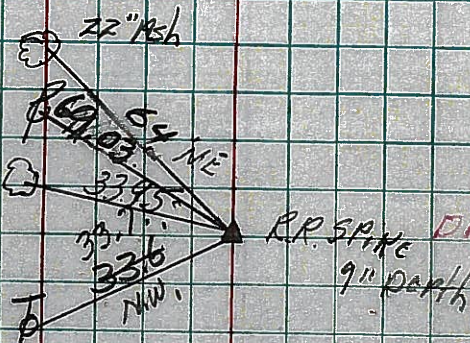
Sta. 297+58.9
 $\Delta = 1^{\circ}-22''$ Lt.
R.R. Spike on & R/W
1612+84.5 #209



Iron Pin showing
Set spike
4-22-60

91-B

Sta. 312+35.1
 $\Delta = 1^{\circ}-33''$ Lt
R.R. Spk. on & R/W
1627+60.7 #210



Set spike
4-22-60