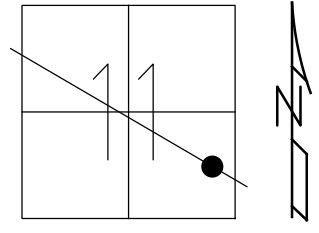


O.D.O.T. DISTRICT 2 SURVEY OFFICE (USE ONLY)

PERSONNEL _____ REFERENCE NO. 91 C SHEET 1 OF 9
 NOTES LEU _____ DATE 06-02-15 ROUTE US 224
 H.C. O'DONNELL _____ WEATHER FAIR COUNTY SENECA
 R.C. RHOADES _____ TEMP. 80° TOWNSHIP VENICE
 _____ SECTION 11
 _____ T 1 N R 18 E

TYPE MONUMENT P.K./WASHER
 ON SURFACE - ~~BELOW~~ ON _____
 LEFT - ☉ PAV'T - ~~RIGHT~~ 2.2'
8.7' TO N EDGE PAVEMENT
 S.L.M. 1636+16 REC



GRID: NORTHING: 507128.7297 EASTING: 1866813.753

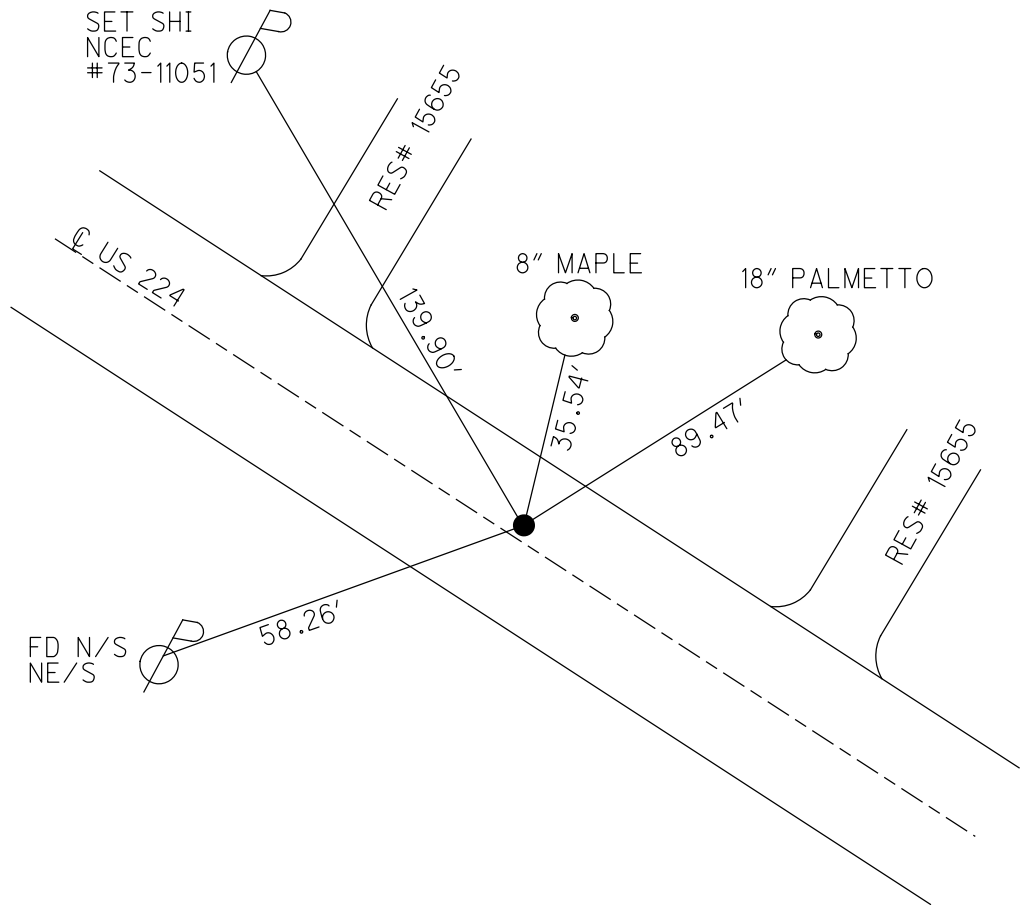
RECORD:
 P.O.T.STA. 1635+09.53
 S.L.M.1636+16
 FD R.R.SPIKE AT SURFACE
 7-8-1983

SET P.K./WASHER
 11/3/83

SET P.K./WASHER
 9/10/93 RCC

FD PK/WASHER
 GPS, REFC91
 06-02-15

SET MAG/WASHER
 GPS, NEWREFC91
 9-21-16, JFO



O.D.O.T. DISTRICT 2 SURVEY OFFICE

PERSONNEL

NOTES CHENEY
H.C. RIPPLE
R.C. BARBOUR
GEYMAN

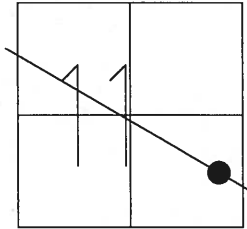
REFERENCE NO. 91 C

DATE 7/20/93
WEATHER FAIR
TEMP. 80°

SHEET 14 OF 22

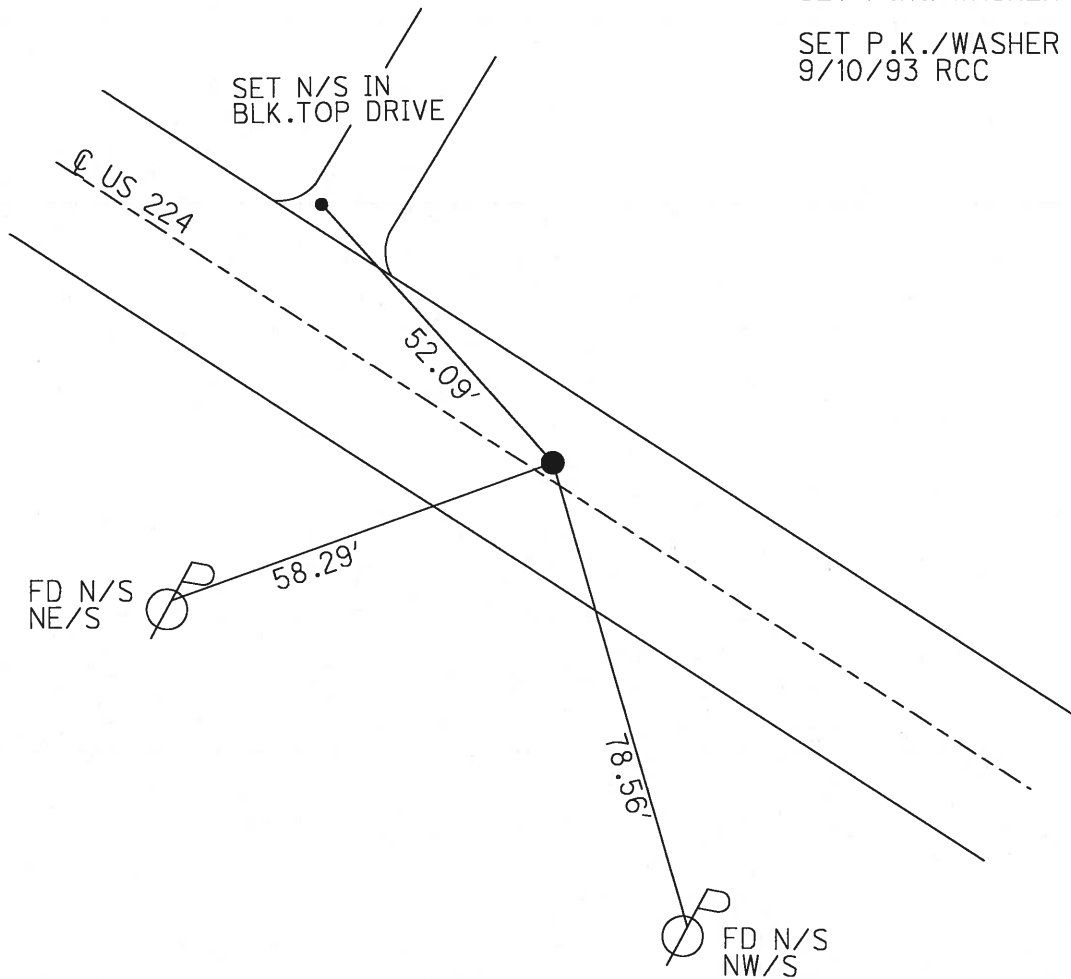
ROUTE US 224
COUNTY SENECA
TOWNSHIP VENICE
SECTION 11
T 1 N R 18 E

TYPE MONUMENT P.K./WASHER
ON SURFACE - ~~BELOW~~ ON
LEFT - C PAV'T - ~~RIGHT~~ 2.2'
8.7' TO N EDGE PAVEMENT
S.L.M. 1582+26
Grid: Northing: Easting:



RECORD: 7/18/1983
P.O.T.STA. 1635+09.53
S.L.M.1636+16
FD R.R.SPIKE at SURFACE
SET P.K./WASHER 11/3/83

SET P.K./WASHER
9/10/93 RCC



O.D.O.T. DISTRICT 2 SURVEY OFFICE

PERSONNEL

REFERENCE NO. 91-C

SHEET 13 OF 21

NOTES CHENEY

H.C. RIPPLE

DATE 7-20-1993

ROUTE #224

R.C. BALBOUR

WEATHER FAIR

COUNTY SENECA

GEYMAN

TEMP. 80°

TOWNSHIP VENICE

SECTION 11

T 1 N R 18 E

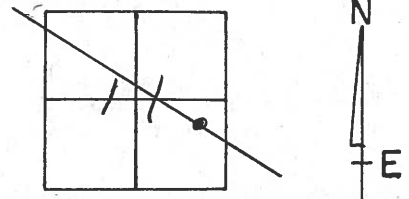
TYPE MONUMENT PK/WASHER

ON SURFACE - ~~BELOW~~ ON

LEFT - 0 PAV'T. - ~~RIGHT~~ 2.2'

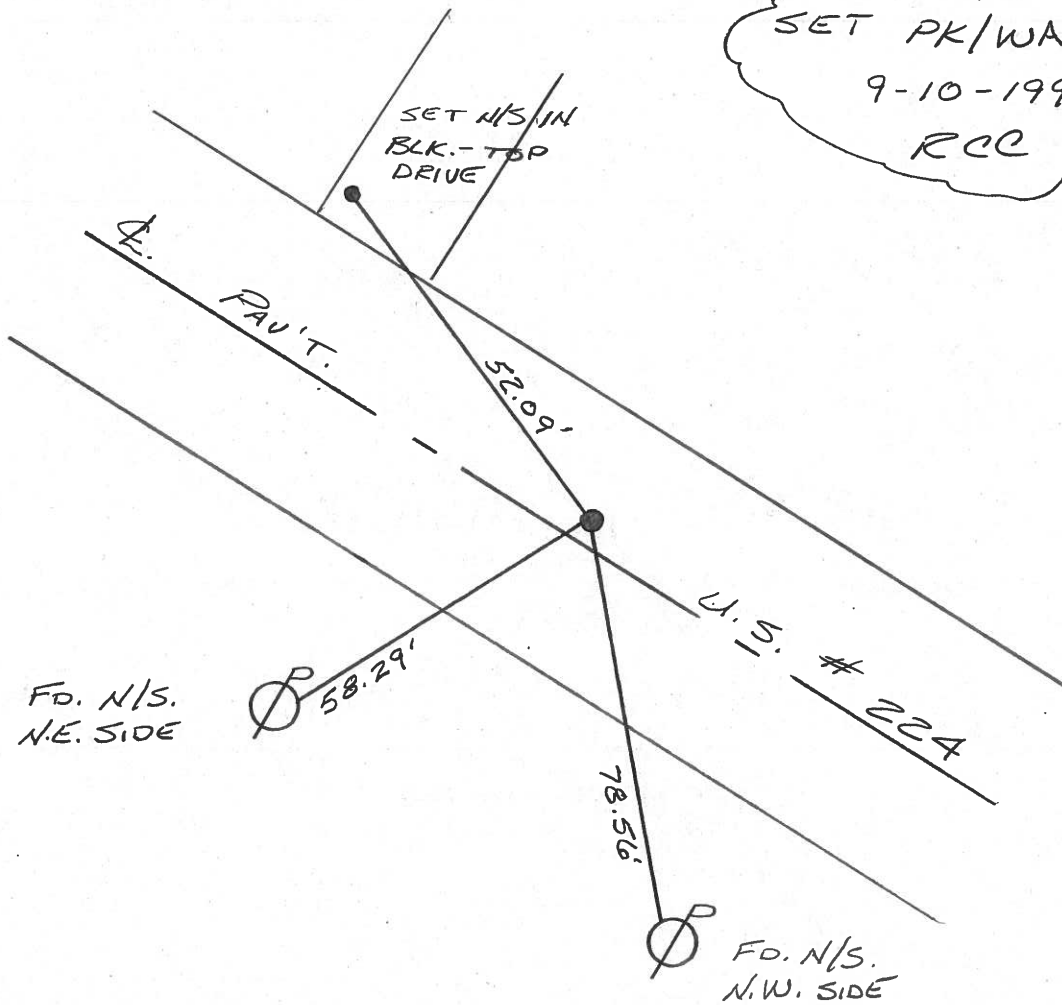
8.7' TO N. EDGE PAVEMENT

S.L.M. 1582+26



RECORD: 7-18-1983
P.O.T. STA. 1635+09.53
S.L.M. 1636+16
FD. R.R. SPK. @ SURFACE
SET PK/WASHER 11-3-83

SET PK/WASHER
 9-10-1993
 RCC



Q.D.O.T. DISTRICT 2 SURVEY OFFICE

SHEET 12 OF

County SENECA ~~S.R.~~ V.S. 224

Date 7-18-83

Township VENICE

Weather HAZY

Section 11

Temp. 80°

T N, R E

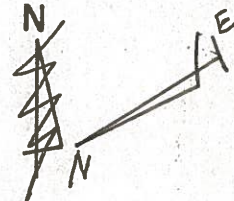
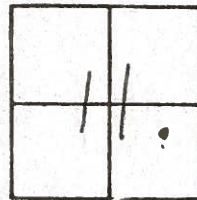
Personnel HOFFMAN

HOUSEHOLDER

LOENRKE

BARNHISEL

91-0



P.O.T. 1635+09.53

FD. R.R. SPR. @ SURFACE

S.L.M. 1636+16

2.2' LT. of ϕ

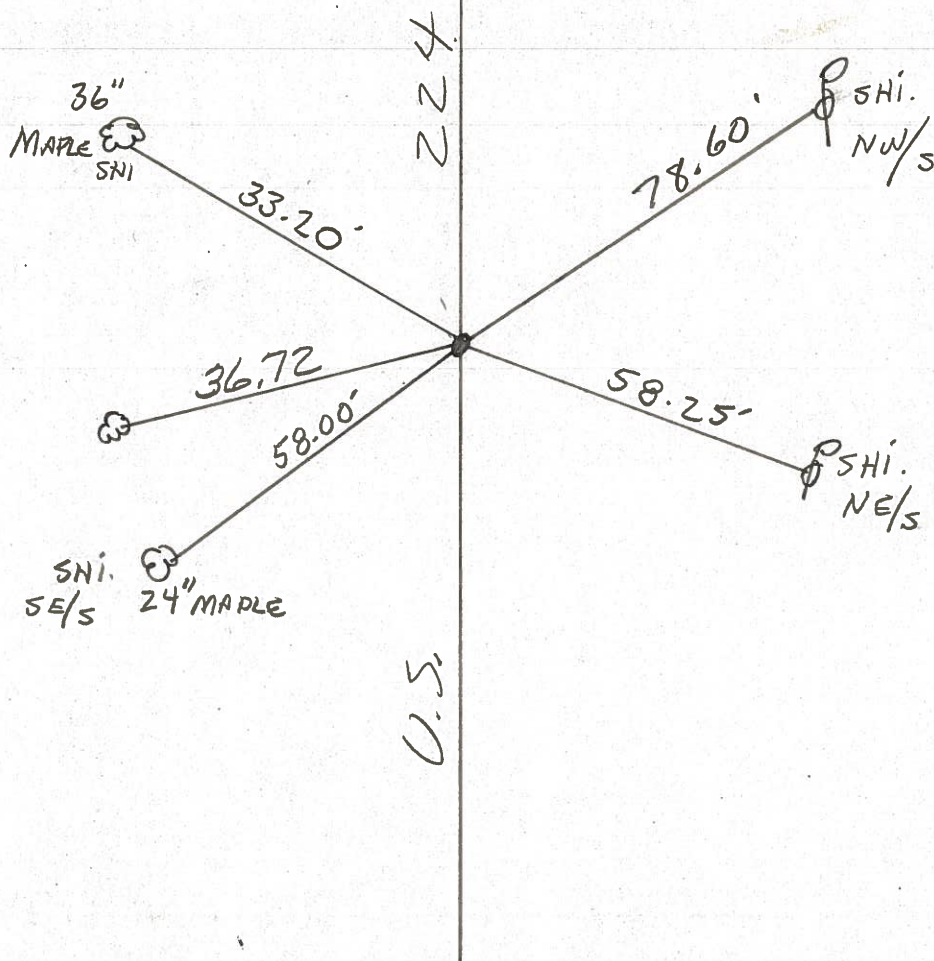
8.7' TO N.E.P.

14.2' TO S.E.P.

SET P.K./WASITER

11-3-83

S.W.H.



PERSONNEL TITLE PERSONNEL TITLE

COUNTY Seneca DATE 1-13-66

S. R. U.S. # 224 WEATHER

SEC. TEMP.

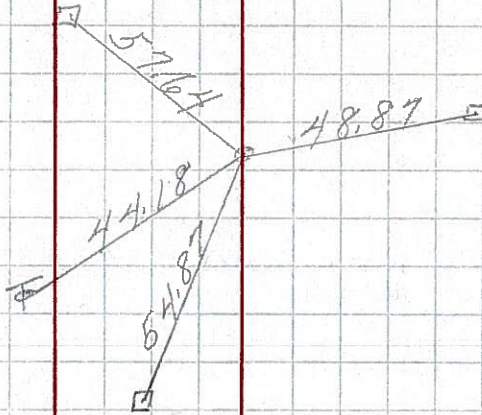
DESCRIPTION Attica - Huron Co. Line JOB NO.

LEFT CENTER LINE RIGHT

91-D

P.O.T.
1650+04.78
R.R. SPK.

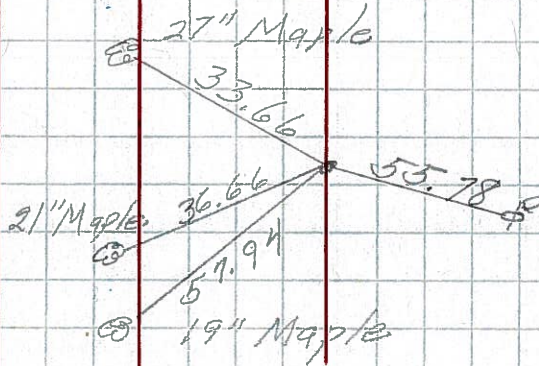
8649



91-C

P.O.T.
1635+09.53
R.R. SPK.

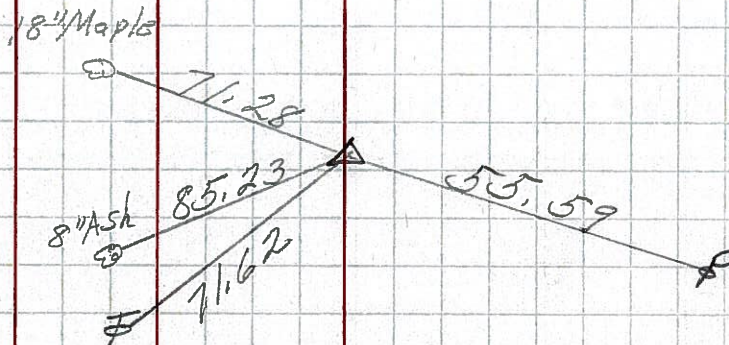
8648



91-B

P.T.
1627+60.55
 $\Delta = 1^\circ 29' Lt.$
R.R. SPK.

210
8647



PERSONNEL TITLE PERSONNEL TITLE

COUNTY SCHENQ DATE 1-13-66

S. R. U.S. # 224 WEATHER

SEC. TEMP.

DESCRIPTION Attica - Huron Co. Line JOB NO.

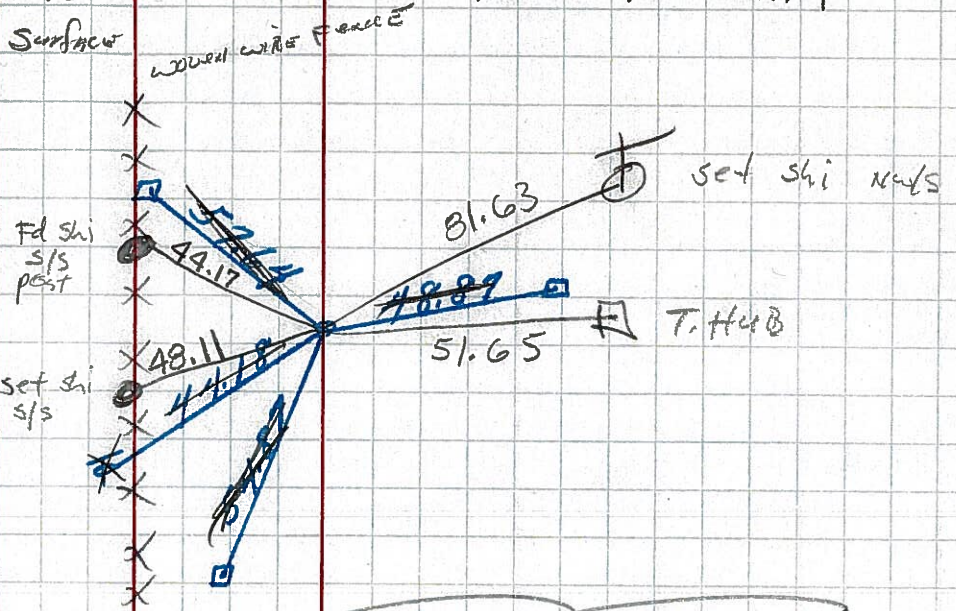
LEFT CENTER LINE RIGHT

1650+05
1622+78
27+27
1623+80
1651+07

7-18-83
Fd RR Spk
0.6 Lt &
10.9 N & P
11.5 Sep

+750
Surface

1651+16 = SLM

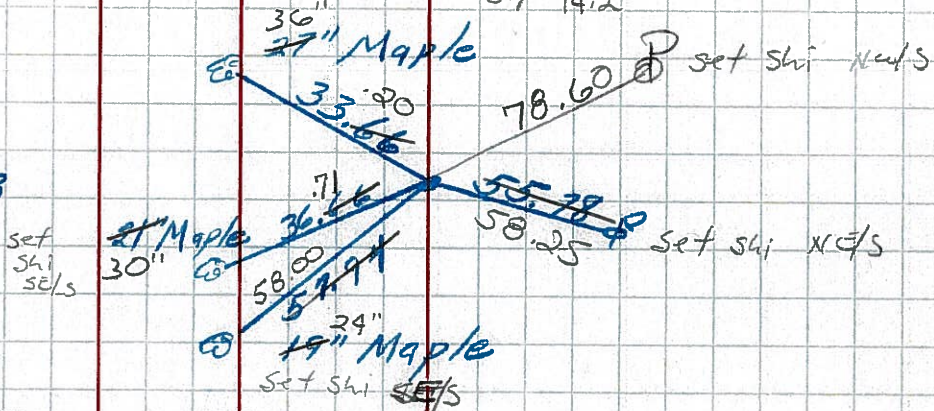


✓
P.O.T.
1650+04.78
R.R. SPK.
91-D

7-18-83 SLM = 1636+16
Fd RR Spk - Surface
Lt & 2.2'
N & P 8.7
Sep 14.2'

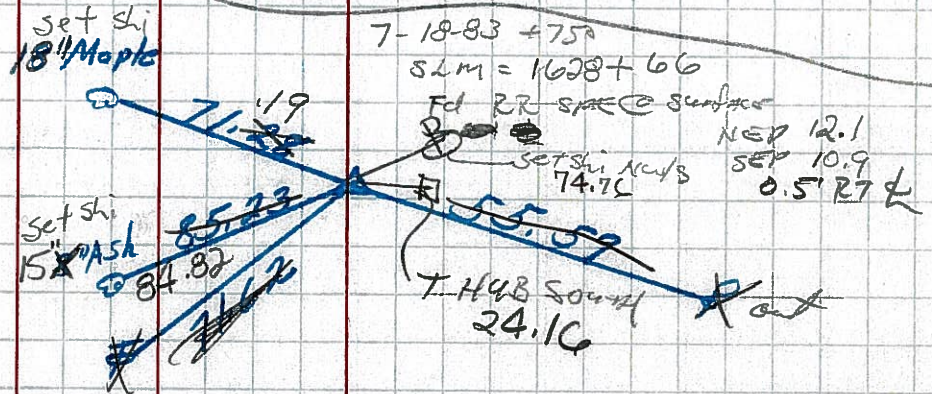
1651+16
-14+96
1636+20

1650+05
1635+09
14+96
P.O.T.
1635+09.53
R.R. SPK.
91-C



1636+16
-7+48
1628+68

1635+09
1627+61
7+48
P.I.
1627+60.55
Δ = 1° 29' Lt.
R.R. SPK.
91-B



210

PERSONNEL TITLE PERSONNEL TITLE

Cronin
Barbour
Ripple

Schneider
Messer

COUNTY Seneca

DATE Aug. 9/63

S. R. #224

WEATHER

SEC Athira East to Co. Line TEMP.

DESCRIPTION Ties for Control Points

JOB NO.

LEFT CENTER LINE RIGHT

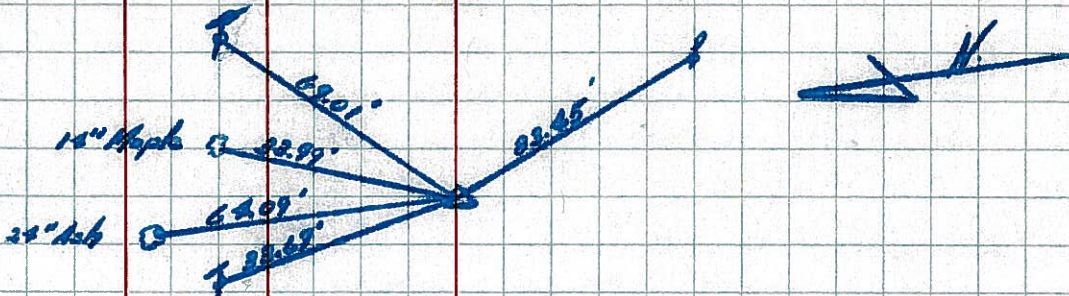
* All Ties Plumbed

✓ P.I.

91-B 1627+60.55

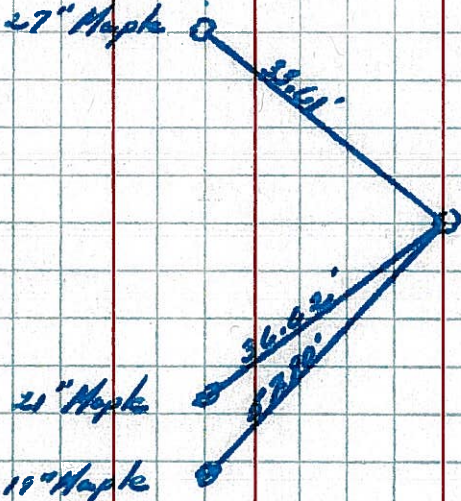
$\Delta = 1^{\circ}29' Lt.$

Found R.P. Spk. 6" below surface



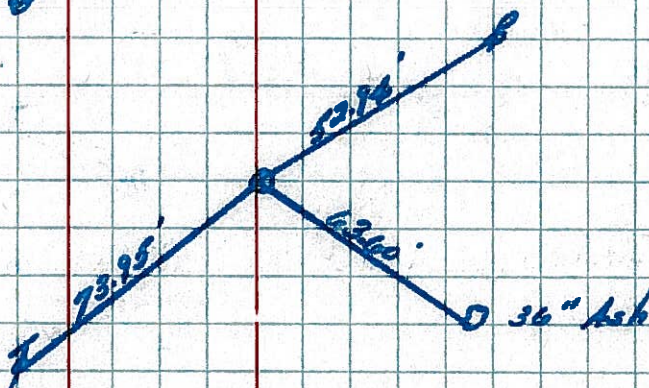
✓ P.O.T.

91-C 1635+09.53
Set P.K. Nail



✓ P.O.T.

91-D 1650+04.78
Set P.K. Nail



✓ P.O.T.

91-E 1663+67.29
Found hinge nail
Called Sec. Linsen
1931 Plans. Appears
to be good

