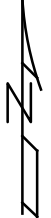
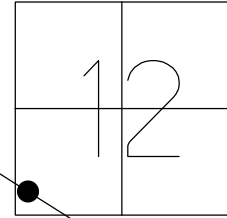


O.D.O.T. DISTRICT 2 SURVEY OFFICE (USE ONLY)

PERSONNEL	REFERENCE NO.	<u>91 E</u>	SHEET	<u>3</u>	OF	<u>9</u>
NOTES	<u>O'DONNELL</u>	DATE	<u>6/12/15</u>	ROUTE	<u>US 224</u>	
H.C.	<u>LEU</u>	WEATHER	<u>SUNNY</u>	COUNTY	<u>SENECA</u>	
R.C.	<u>RHOADES</u>	TEMP.	<u>59°</u>	TOWNSHIP	<u>VENICE</u>	
				SECTION	<u>12</u>	
				T	<u>1</u>	N
				R	<u>18</u>	E

TYPE MONUMENT P.K./WASHER
 ON SURFACE - ~~BELOW~~ ON
 LEFT - Q PAV'T - RIGHT ON
11.0' TO S EDGE PAVEMENT
 S.L.M. 1664+84 REC

GRID: NORTHING: 505946.9487 EASTING: 1869416.004



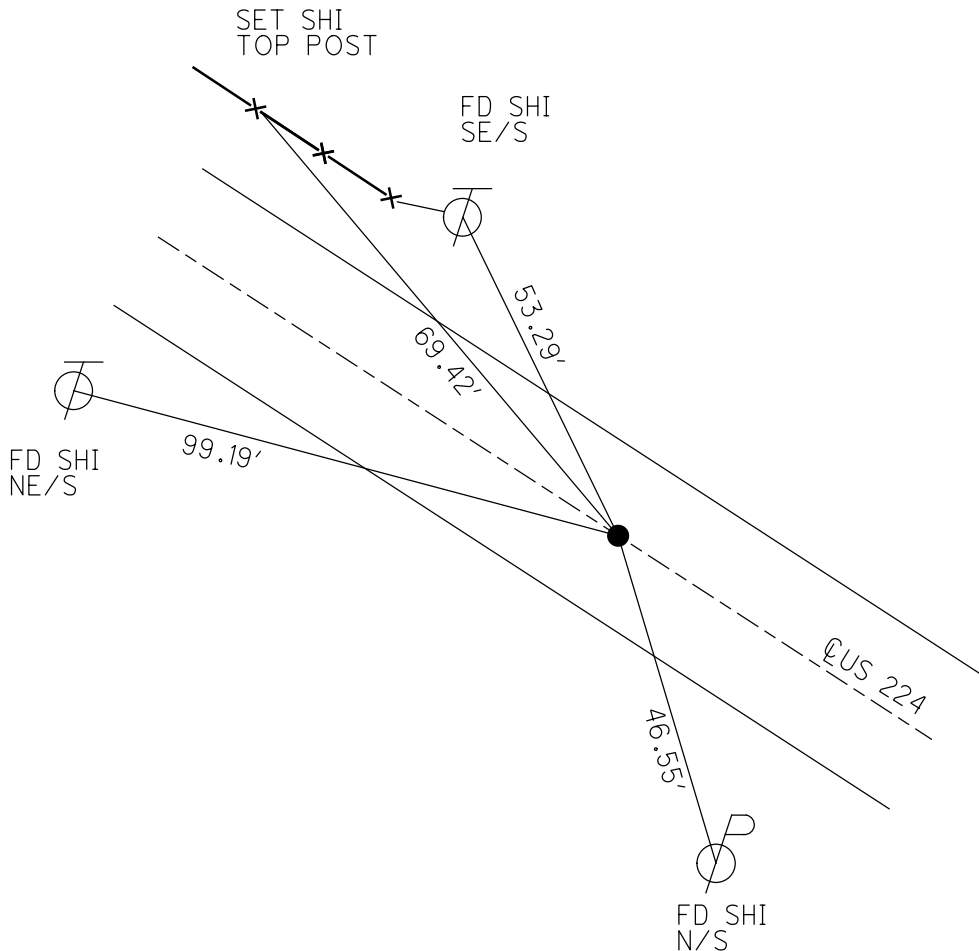
RECORD:
 P.O.T.STA. 1663+67.23
 S.L.M.1664+84
 FD R.R.SPIKE AT SURFACE
 7-8-1983

SET P.K./WASHER
 11/3/83

SET P.K./WASHER
 9/10/93 RCC

FD SM. RR. SPIKE
 1.5" BELOW
 GPS, REF91
 6-2-15

SET MAG/WASHER
 GPS, NEWREFE91
 9-21-16, JFO



O.D.O.T. DISTRICT 2 SURVEY OFFICE

PERSONNEL

REFERENCE NO. 91 E

SHEET 16 OF 22

NOTES CHENEY

DATE 7/20/93

ROUTE US 224

H.C. RIPPLE

WEATHER FAIR

COUNTY SENECA

R.C. BARBOUR

TEMP. 80°

TOWNSHIP VENICE

GEYMAN

SECTION 12

T 1 N R 18 E

TYPE MONUMENT P.K./WASHER

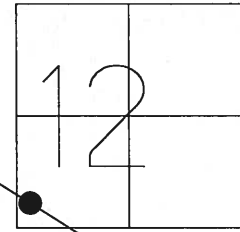
ON SURFACE - ~~BELOW~~ ON

LEFT - C PAV'T - RIGHT ON

11.0' TO S EDGE PAVEMENT

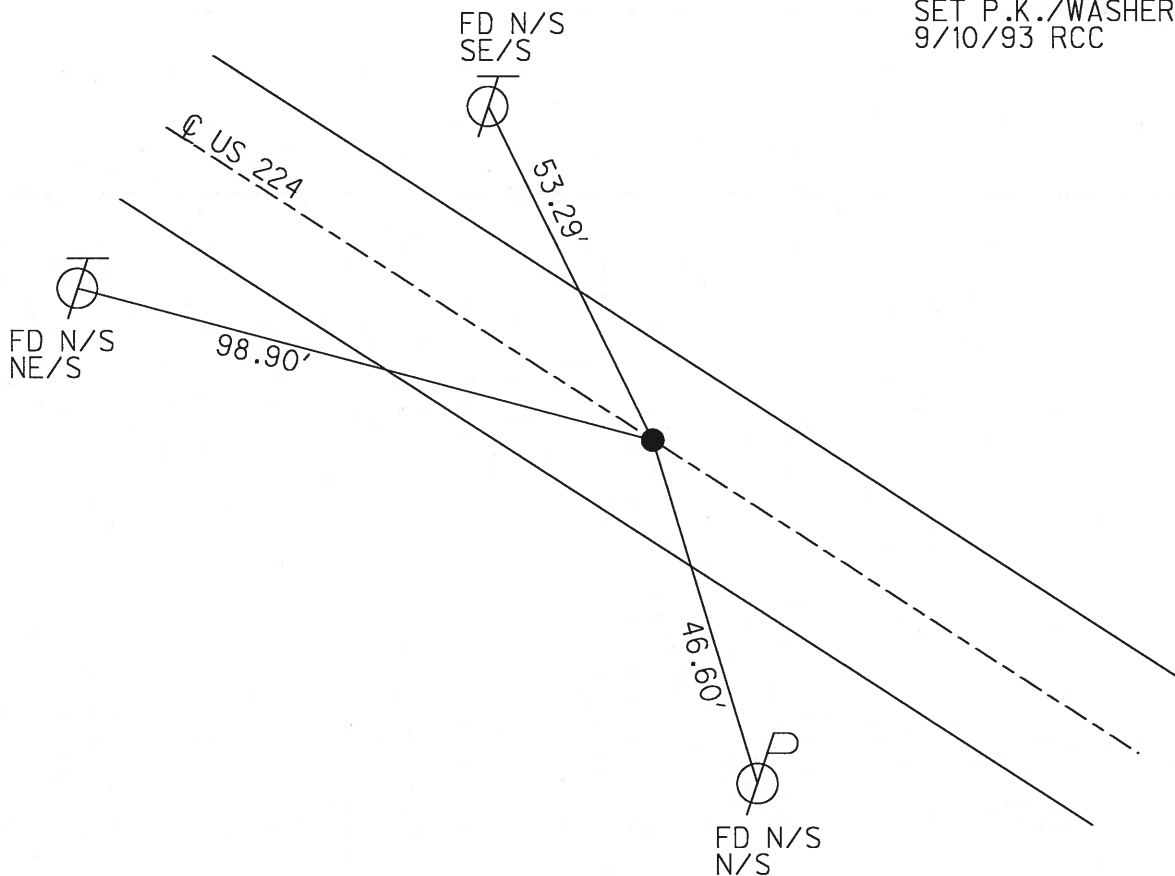
S.L.M. 1610+94

Grid: Northing: _____ Easting: _____



RECORD: 7/18/1983
 P.O.T.STA. 1663+67.23
 S.L.M.1664+84
 FD R.R.SPIKE at SURFACE
 SET P.K./WASHER 11/3/83

SET P.K./WASHER
 9/10/93 RCC



O.D.O.T. DISTRICT 2 SURVEY OFFICE

PERSONNEL

REFERENCE NO. 91-E

SHEET 15 OF 21

NOTES CHENEY

H.C. RIPPLE

DATE 7-20-1993

ROUTE #224

R.C. BARBOUR

WEATHER FAIR

COUNTY SENECA

GEYMAN

TEMP. 80°

TOWNSHIP VENICE

SECTION _____

T 1 N R 18 E

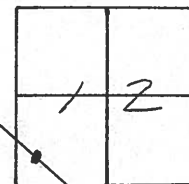
TYPE MONUMENT PK/WASHER

ON SURFACE - ~~BELOW~~ ON

~~LEFT~~ - RIGHT PAV'T. - ON

11' TO S. EDGE PAVEMENT

S.L.M. 1610+94



RECORD: 7-18-1983

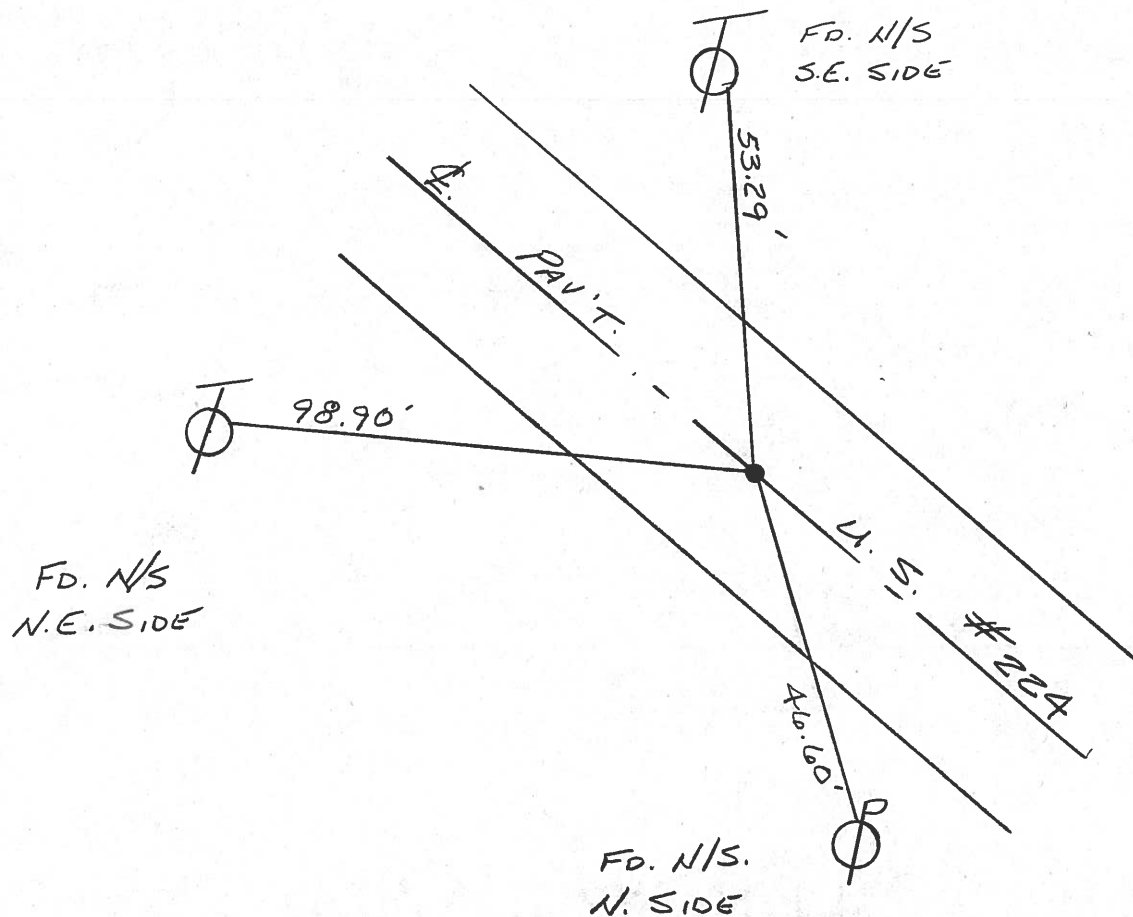
P.O.T. STA. 1063+67.23

SLM: 1064+84

FD. R.R. SPK. @ SURFACE

SET PK/WASHER 11-3-83

SET PK/WASHER
 9-10-1993
 R.C.C.



County SENEGA ~~S.P.~~ U.S. 224

Township VENICE

Section 12

T N, R E

Personnel HOFFMAN

HOUSEHOLDER

LOHRKE

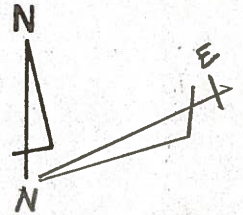
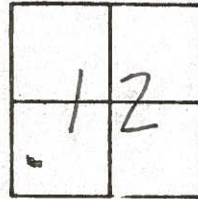
BARNISEL

91-E

Date 7-18-83

Weather HAZY

Temp. +80°



P.O.T. 1663+67.23

FD. R.R. SPIKE @ SURFACE

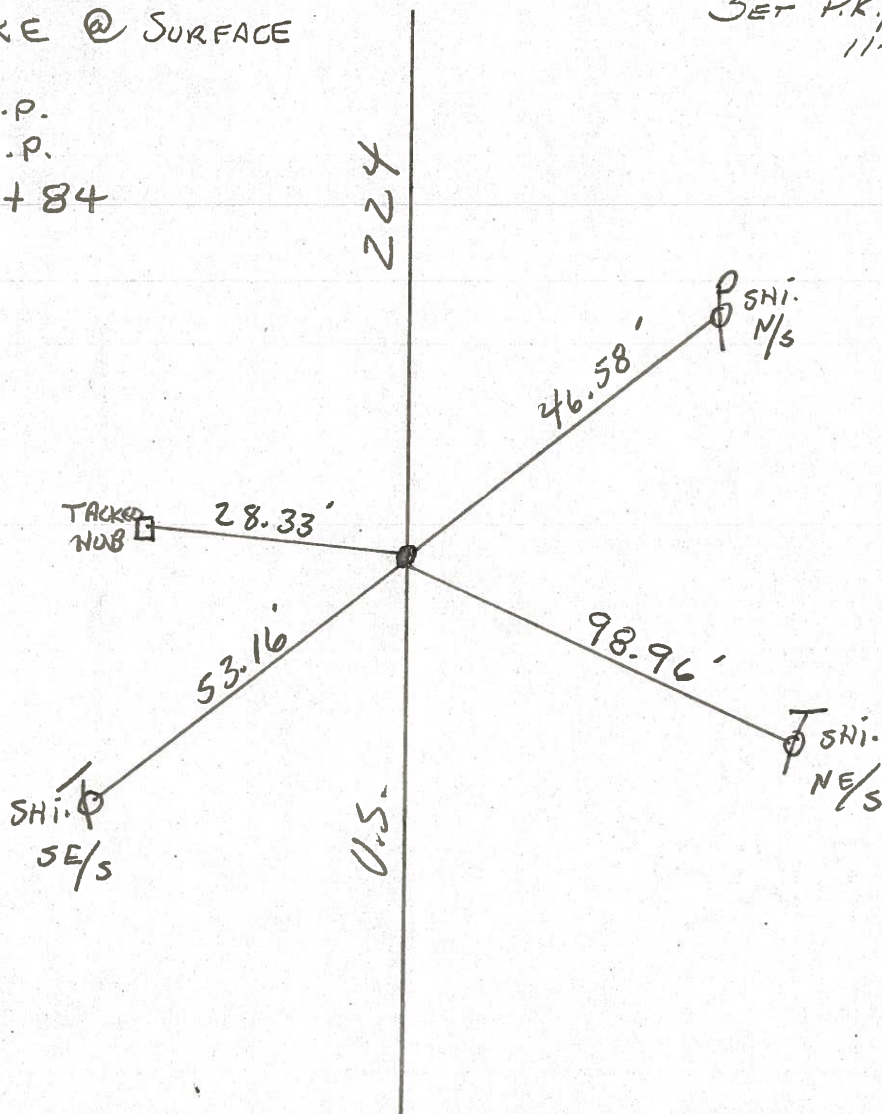
ON E

11.8' - TO N.E.P.

11.0' - TO S.E.P.

S.L.M. 1664+84

SET P.K./WASHER
11-3-83
S.W.H.



PERSONNEL TITLE PERSONNEL TITLE

COUNTY Seneca DATE 1-13-66

S. R. U.S. # 224 WEATHER

SEC. TEMP.

DESCRIPTION Atlica - Huron Co. in JOB NO.

LEFT CENTER LINE RIGHT

91-G

P.I.
1685 + 16.43
Δ - 0° N' R.
R.R. SPK.
~~2H~~

8652



91-F

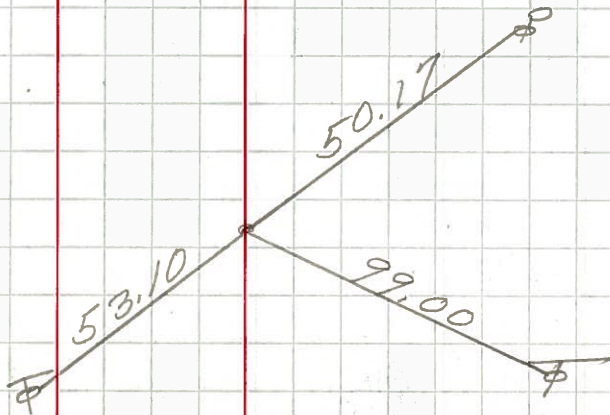
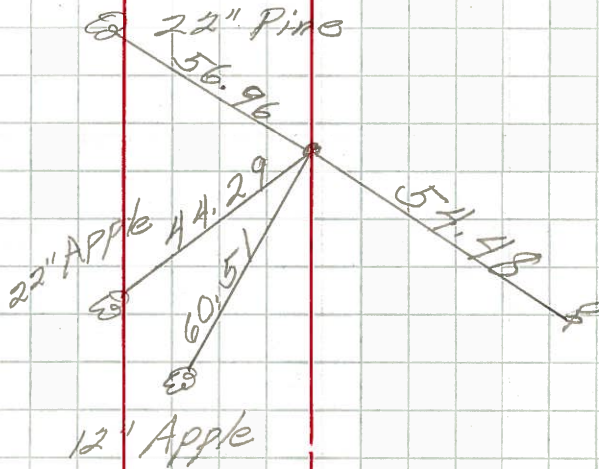
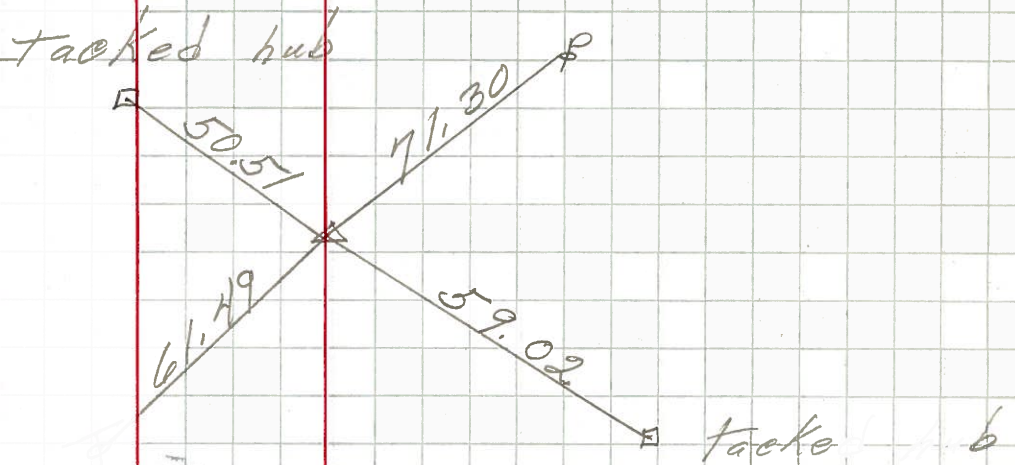
P.O.T.
1670 + 80.2
R.R. S.

651

91-E

P.O.T.
1663 + 67.23
SPK. (R.)

8650



PERSONNEL TITLE PERSONNEL TITLE

COUNTY Seneca DATE 1-13-66

S. R. U.S. # 224 WEATHER

SEC. TEMP.

DESCRIPTION Atlica - Huron Co. Line JOB NO.

LEFT CENTER LINE RIGHT

1685+16
1670+80
14+36
1671+99
1686+35

7-18-83 ±800
Fd RR SPK surface
0.5 Lt &
11.3N up
11.9S up

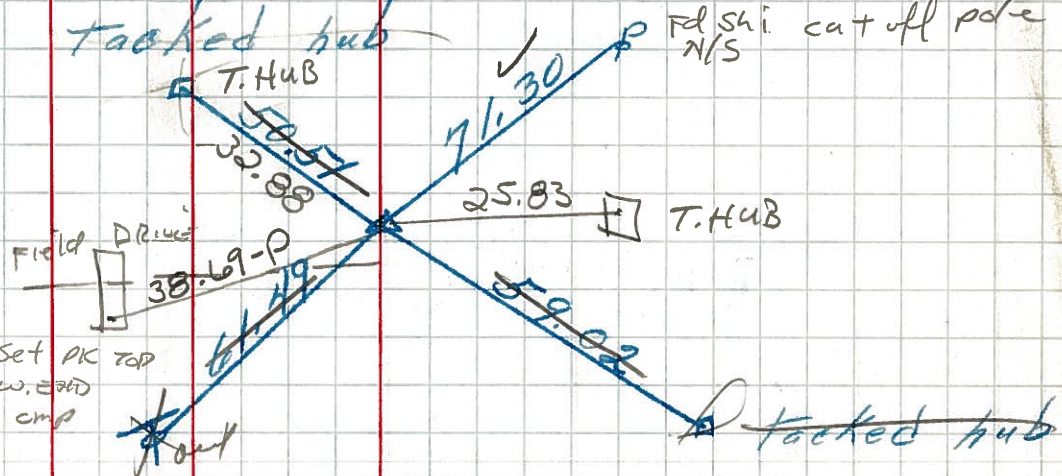
SLM = 1686+40

Tacked hub

Fd shi cut off pole N/S

91-G

P.I.
1685+16.43
Δ = 0° 11' RT.
R.R. SPK.
211



1670+80
1663+67
7+13
1664+84
1671+97

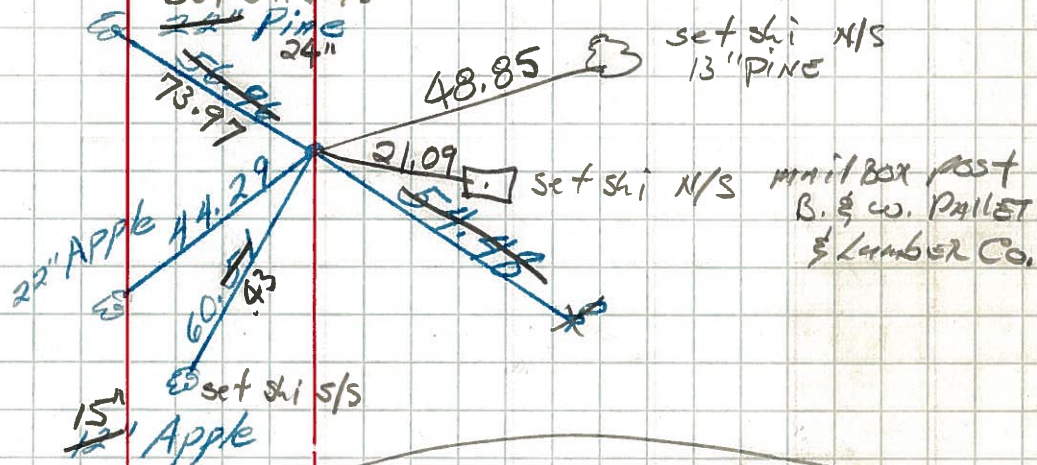
7-18-83 ±800
Fd RR SPK surface
SLM 1671+99
oxi &
Nep 11.8
Sep 11.4

Set shi s/s
24" Pine

set shi N/S
13" PINE

91-F

P.O.T.
1670+80.25
R.R. SPK.



1663+67
1650+05
13+62
1651+16

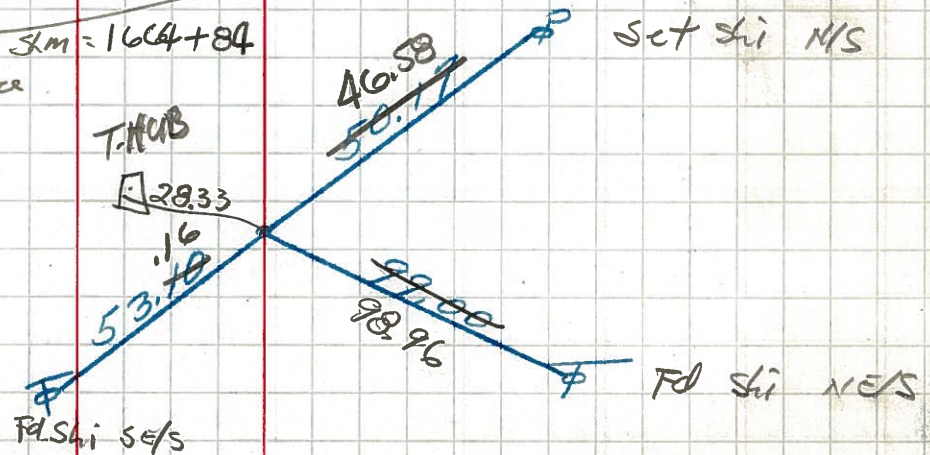
7-18-83 ±800 SLM = 1664+84
Fd R.R. SPK surface
oxi &
Nep 11.8
Sep 11.0

T.HUB

Set shi N/S

91-E

P.O.T.
1663+67.23
SPK. (R.R.)



PERSONNEL	TITLE	PERSONNEL	TITLE	COUNTY	DATE
<u>Cronin</u>		<u>Schneider</u>		<u>Seneca</u>	<u>Aug. 9/63</u>
<u>Barbour</u>		<u>Masser</u>		S. R. # <u>224</u>	WEATHER _____
<u>Ripple</u>				SEC <u>Attica East to Co. Line</u>	TEMP. _____

DESCRIPTION Ties for Control Points JOB NO. _____

