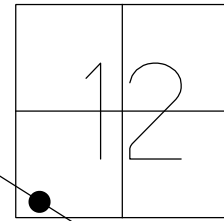


O.D.O.T. DISTRICT 2 SURVEY OFFICE (USE ONLY)

PERSONNEL	REFERENCE NO.	91 F	SHEET	4	OF	9
NOTES	LEU	DATE	06-04-15	ROUTE	US 224	
H.C.	O'DONNELL	WEATHER	SUNNY	COUNTY	SENECA	
R.C.	RHOADES	TEMP.	74°F	TOWNSHIP	VENICE	
				SECTION	12	
				T	1	N
				R	18	E

TYPE MONUMENT P.K./WASHER
 ON SURFACE - ~~BELOW~~ ON
 LEFT - PAV'T - RIGHT ON
11.5' TO S EDGE PAVEMENT
 S.L.M. 1671+99 REC



GRID: NORTHING: 505652.0703 EASTING: 1870065.25

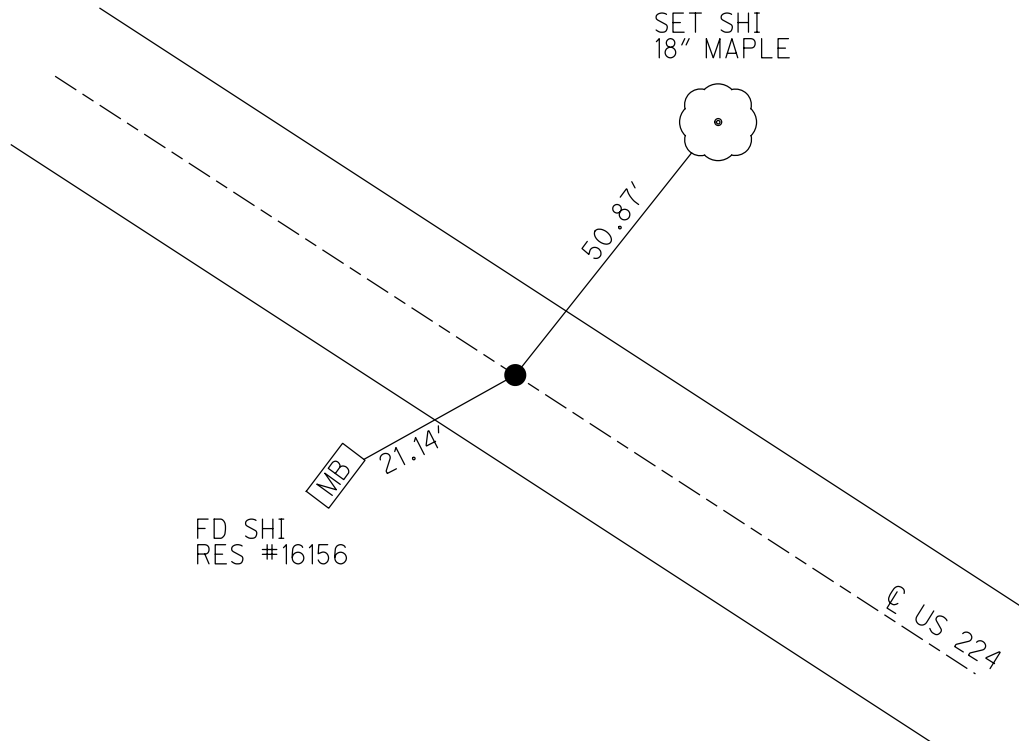
RECORD:
 P.O.T.STA. 1670+80.25
 S.L.M. 1671+99
 FD R.R. SPIKE
 7-08-1983

SET P.K./WASHER
 11/18/83

SET P.K./WASHER
 9/10/93 RCC

FD PK/WASHER
 GPS, REFF91
 06-04-15

SET MAG/WASHER
 GPS, NEWREFF91
 9-22-16, JFO



O.D.O.T. DISTRICT 2 SURVEY OFFICE

PERSONNEL

REFERENCE NO. 91 F

SHEET 17 OF 22

NOTES CHENEY

DATE 7/20/93

ROUTE US 224

H.C. RIPPLE

WEATHER FAIR

COUNTY SENECA

R.C. BARBOUR

TEMP. 80°

TOWNSHIP VENICE

GEYMAN

SECTION 12

T 1 N R 18 E

TYPE MONUMENT P.K./WASHER

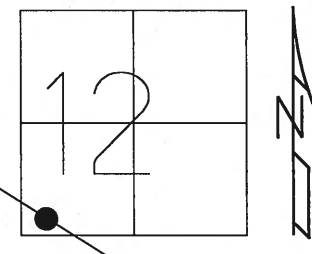
ON SURFACE - ~~BELOW~~ ON

LEFT - C PAV'T - RIGHT ON

11.5' TO S EDGE PAVEMENT

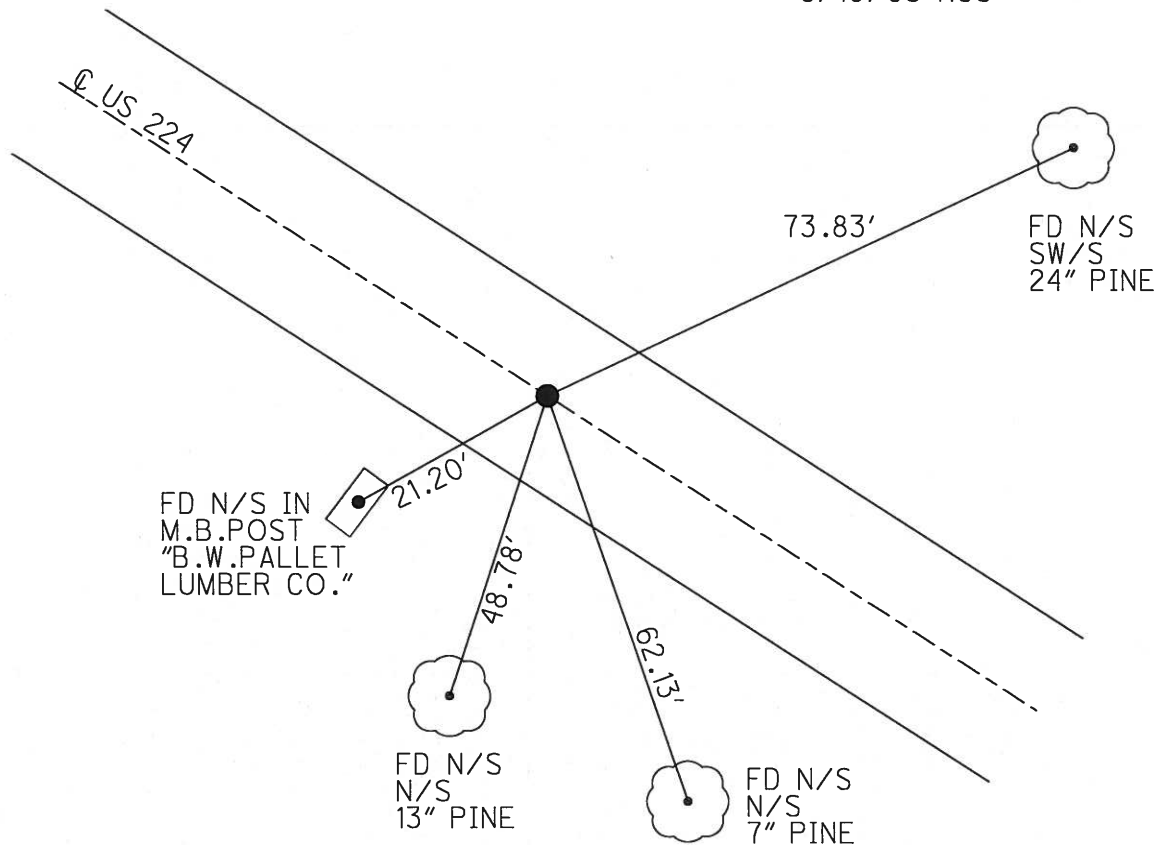
S.L.M. 1618+08

Grid: Northing: _____ Easting: _____



RECORD: 7/18/1983
 P.O.T.STA. 1670+80.25
 S.L.M. 1671+99
 FD R.R.SPIKE
 SET P.K./WASHER 11/18/83

SET P.K./WASHER
 9/10/93 RCC



O.D.O.T. DISTRICT 2 SURVEY OFFICE

PERSONNEL

REFERENCE NO. 91-F

SHEET 16 OF 21

NOTES CHENEY

H.C. RIPPLE

DATE 7-20-1993

ROUTE # 224

R.C. BARBOUR

WEATHER FAIR

COUNTY SENECA

GEYMAN

TEMP. 80°

TOWNSHIP VENICE

SECTION 12

T. N R. 18E

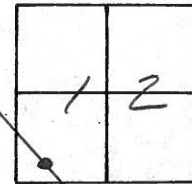
TYPE MONUMENT PK/WASHER

ON SURFACE - ~~BELOW~~ ON

~~LEFT~~ - C PAV'T. - ~~RIGHT~~ ON

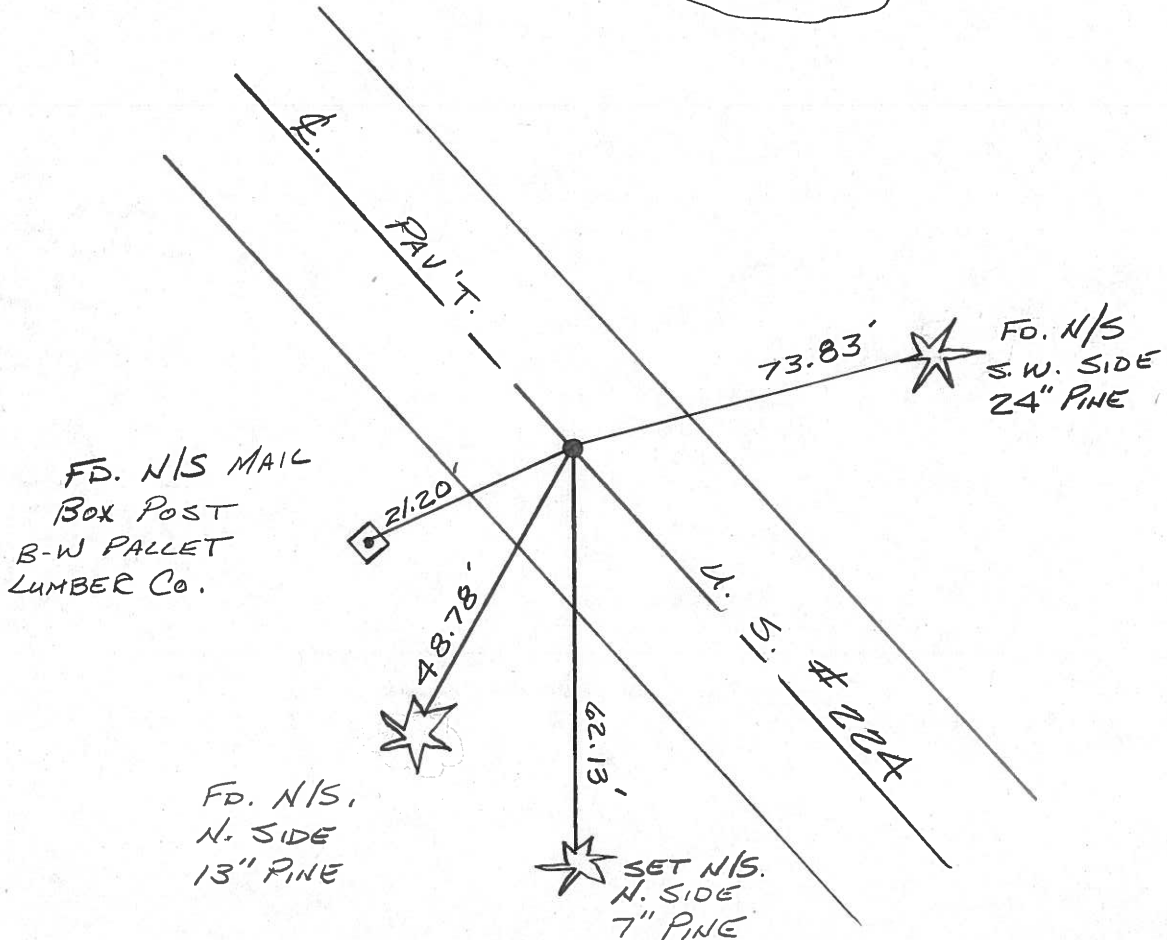
11.5 TO 5. EDGE PAVEMENT

S.L.M. 1618+08



RECORD: 7-18-1983
 P.O.T. STA. 1670+80.25
 SLM 1671+99
 Fd. P.P. SPK.
 SET PK/WASHER 11-8-83

SET PK/WASHER
 9-10-1993
 RCC



County SENECA ~~S.R.~~ U.S. 224

Date 7-18-83

Township VENICE

Weather HAZY

Section 12

Temp. + 80°

T N, R E

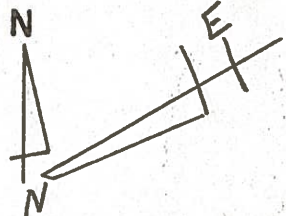
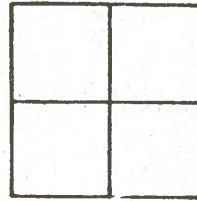
Personnel HOFFMAN

HOUSE HOLDER

LOENRKE

BARNISEL

91-F



P.O.T. 1670 + 80.25

FD. R.R. SPIKE

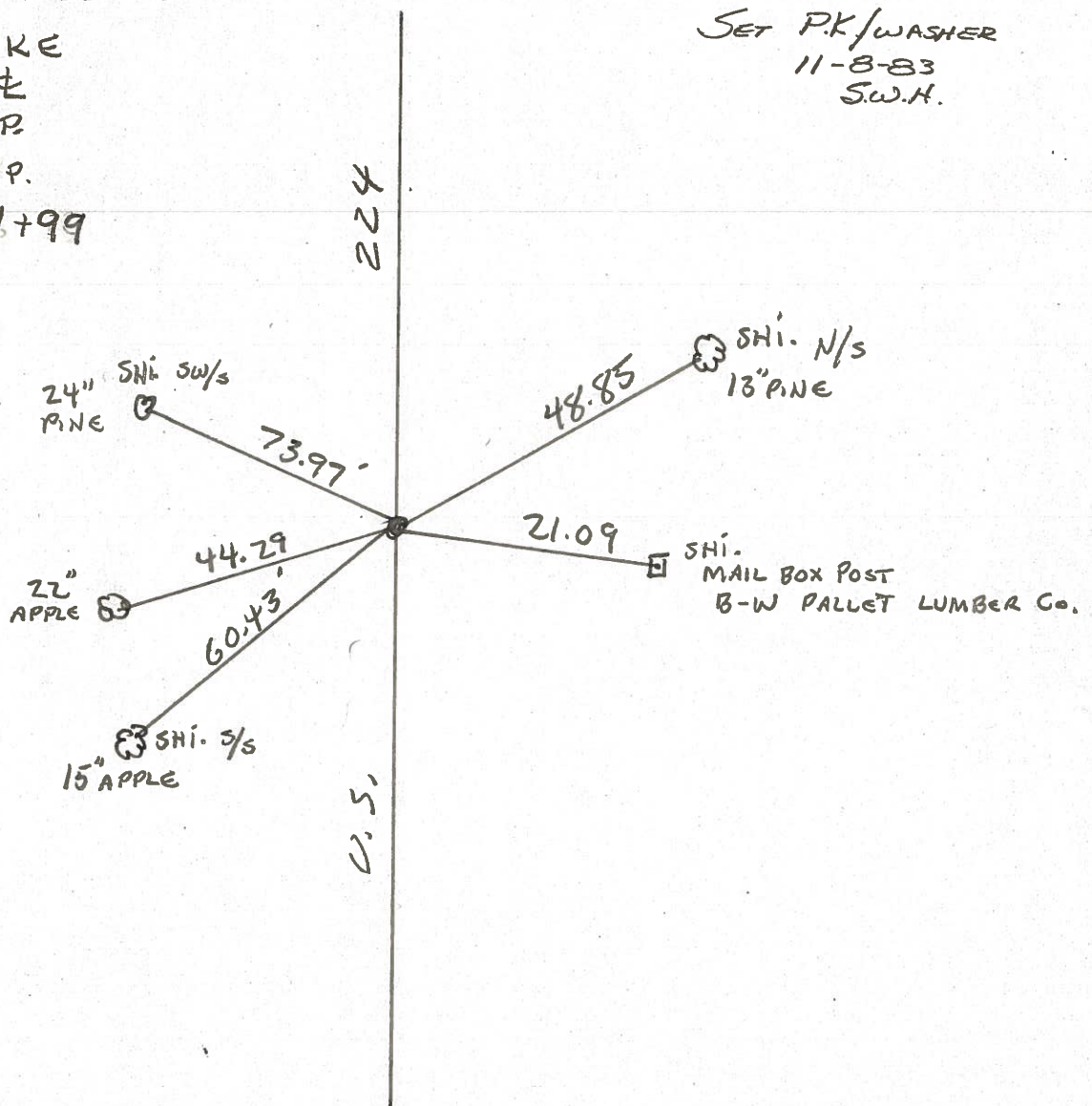
0.5' LT. OF Φ

11.8' TO N.E.P.

11.4' TO S.E.P.

S.L.M. 1671 + 99

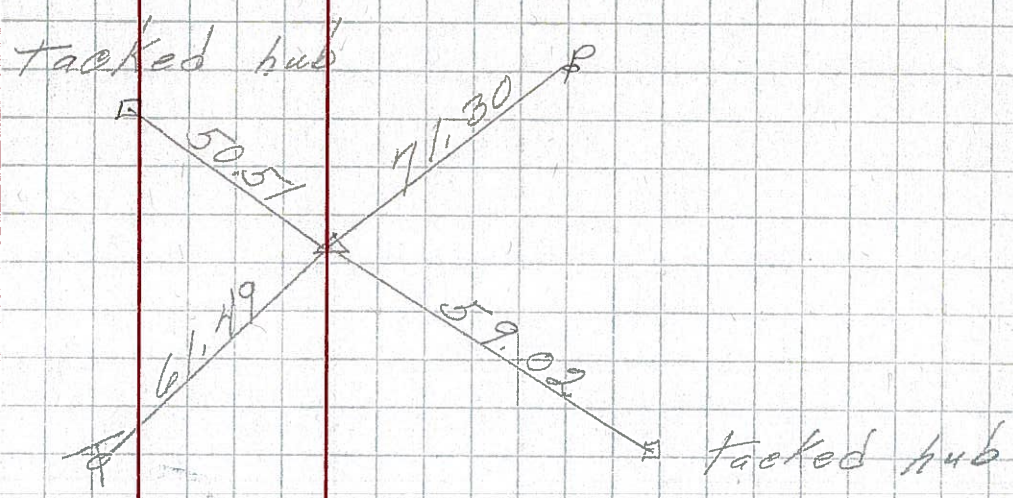
SET P.K./WASHER
11-8-83
S.W.H.



PERSONNEL	TITLE	PERSONNEL	TITLE
COUNTY <u>Seneca</u>		DATE <u>1-13-66</u>	
S. R. <u>U.S. # 224</u>		WEATHER	
SEC.		TEMP.	
DESCRIPTION <u>Attica - Huron Co. Line</u>			JOB NO.
LEFT	CENTER LINE	RIGHT	

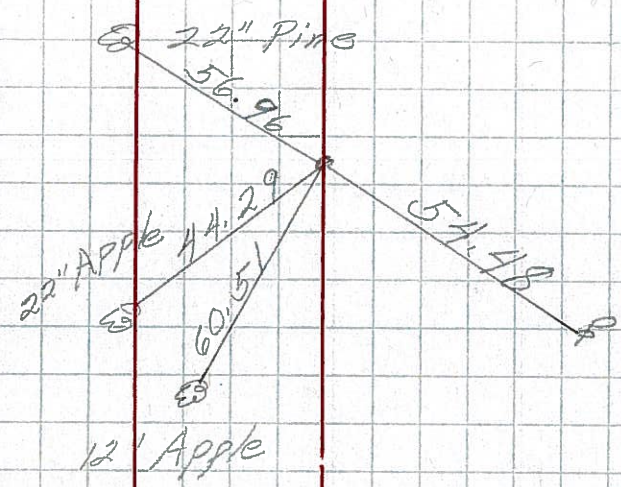
91-G

P.I.
 1685 + 16.43
 $\Delta = 0^\circ 11' \text{ Rt.}$
 R.R. SPK.
211
 8652



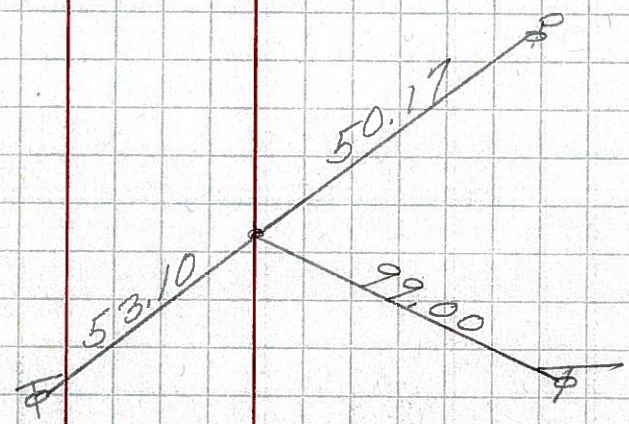
91-F

P.O.T.
 1670 + 80.25
 R.R. SPK.
 8651



91-E

P.O.T.
 1663 + 67.23
 SPK. (R.R.)
 8650



PERSONNEL TITLE PERSONNEL TITLE

COUNTY Seneca DATE 1-13-66

S. R. U.S. # 224 WEATHER

SEC TEMP.

DESCRIPTION Atlica - Huron G. Line JOB NO.

LEFT CENTER LINE RIGHT

1685+16
1670+80
14+36
1671+99
1686+35

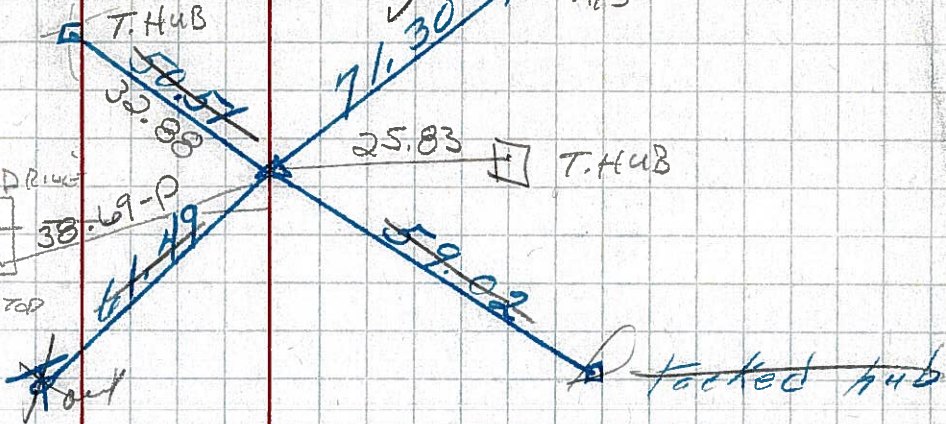
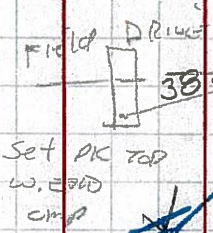
7-18-83 ±800 SLM = 1686+40

Fd RR SPK surface
0.5 Lt &
11.3N sep
11.9S sep

Tacked hub

Fd shi cut off pole N/S

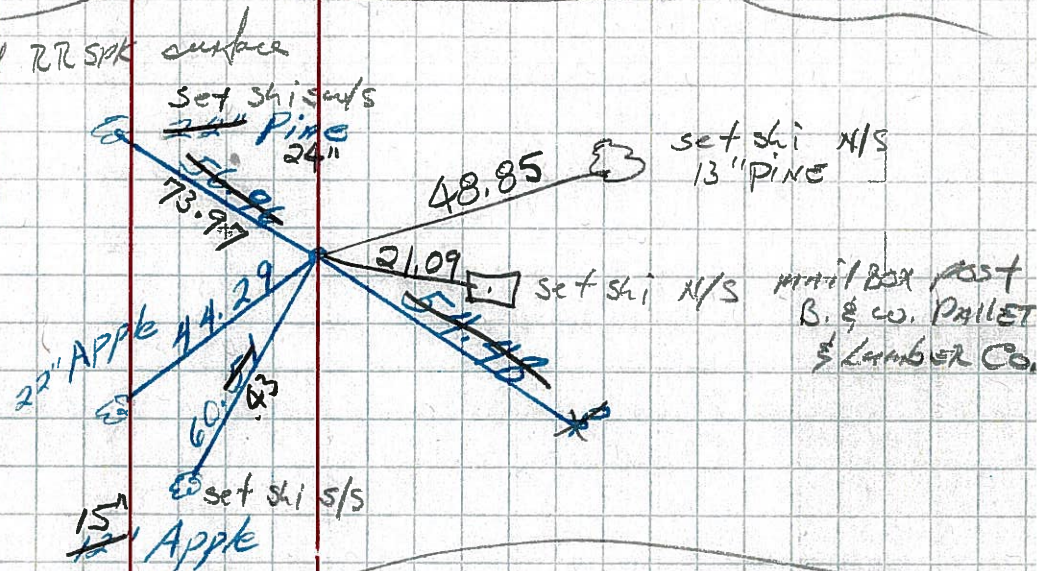
~~91-G~~
P.I.
1685+16.43
Δ = 0° 11' RT.
R.R. SPK.
211



1670+80
1663+67
7+13
1664+82
1671+97

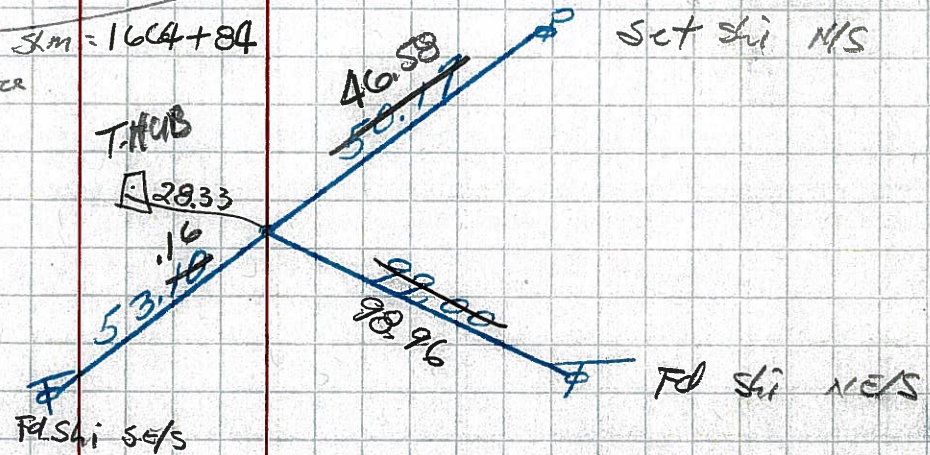
7-18-83 ±800 Fd RR SPK surface
SLM 1671+99
ON Q
Nep 11.8
Sep 11.4

~~91-F~~
P.O.T.
1670+80.25
R.R. SPK.



~~91-E~~
P.O.T.
1663+67.23
S.P.K. (R.R.)

7-18-83 ±800 SLM = 1664+84
Fd RR SPK surface
ON Q
Nep 11.8
Sep 11.0



1663+67
1650+05
13+62
1651+66

PERSONNEL TITLE PERSONNEL TITLE

Cronin Schneider
Barbour Messer
Ripple

COUNTY Seneca DATE Aug. 9/63

S. R. #224 WEATHER _____

SEC Attn: East to Co. Line TEMP. _____

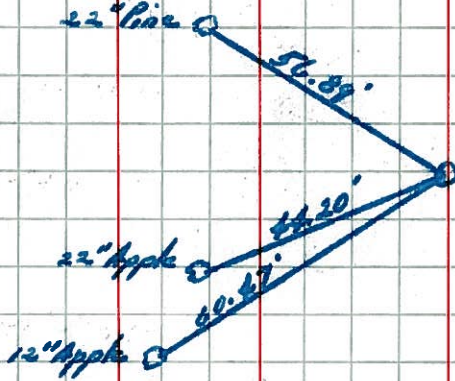
DESCRIPTION Tics for Control Points JOB NO. _____

LEFT CENTER LINE 224 RIGHT

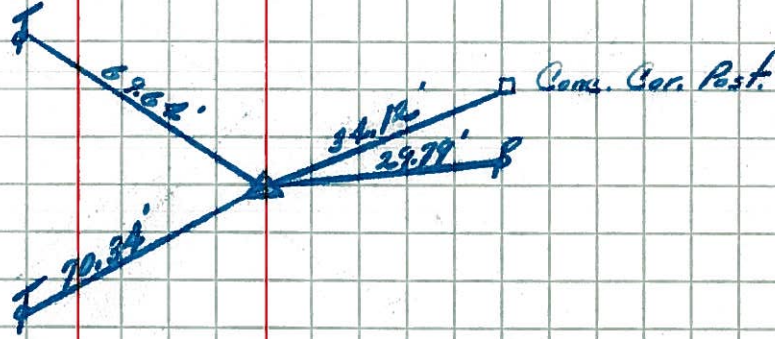
* All Tics Plumbed



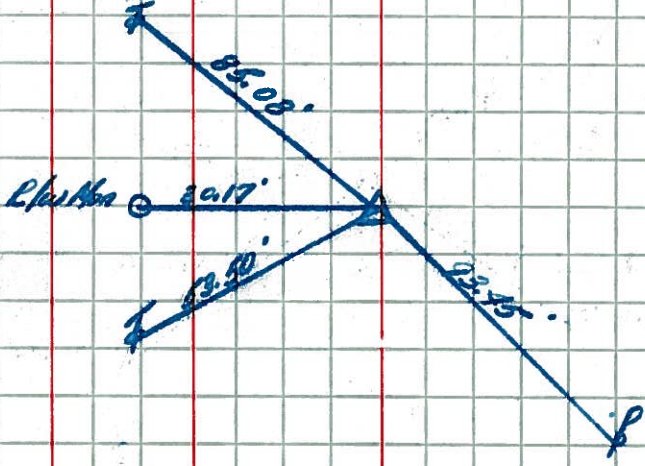
✓ P.O.T.
91-F 1670+80.25
Set P.K. Nail



91-G
✓ P.I.
1685+16.43
Set P.K. Nail
 $\Delta = 0^\circ 11' \text{ Rt.}$



91-GG
✓ P.I.
1698+76.81
 $\Delta = 0^\circ 05' \text{ Rt.}$
Set P.K. Nail



91-H
✓ P.I.
1714+35.47
 $\Delta = 0^\circ 10' \text{ Lt.}$
Set P.K. Nail

