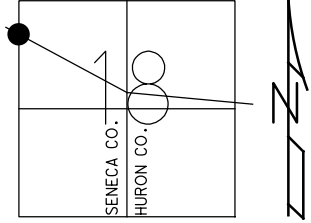


O.D.O.T. DISTRICT 2 SURVEY OFFICE (USE ONLY)

PERSONNEL	REFERENCE NO.	<u>91 H</u>	SHEET	<u>7</u>	OF	<u>9</u>
NOTES	LEU	DATE	<u>06-02-15</u>	ROUTE	<u>US 224</u>	
H.C.	<u>O'DONNELL</u>	WEATHER	<u>SUNNY</u>	COUNTY	<u>SENECA</u>	
R.C.	<u>RHOADES</u>	TEMP.	<u>76°F</u>	TOWNSHIP	<u>VENICE</u>	
				SECTION	<u>18</u>	
				T	<u>1</u>	R
					<u>18</u>	<u>E</u>

TYPE MONUMENT P.K. NAIL
 ON SURFACE - ~~BELOW~~ ON
 LEFT - ☉ PAV'T - RIGHT ON
11' TO RT. EDGE PAVEMENT
 S.L.M. 1715+69 REC

GRID: NORTHING: 503840.4785 EASTING: 1874026.832



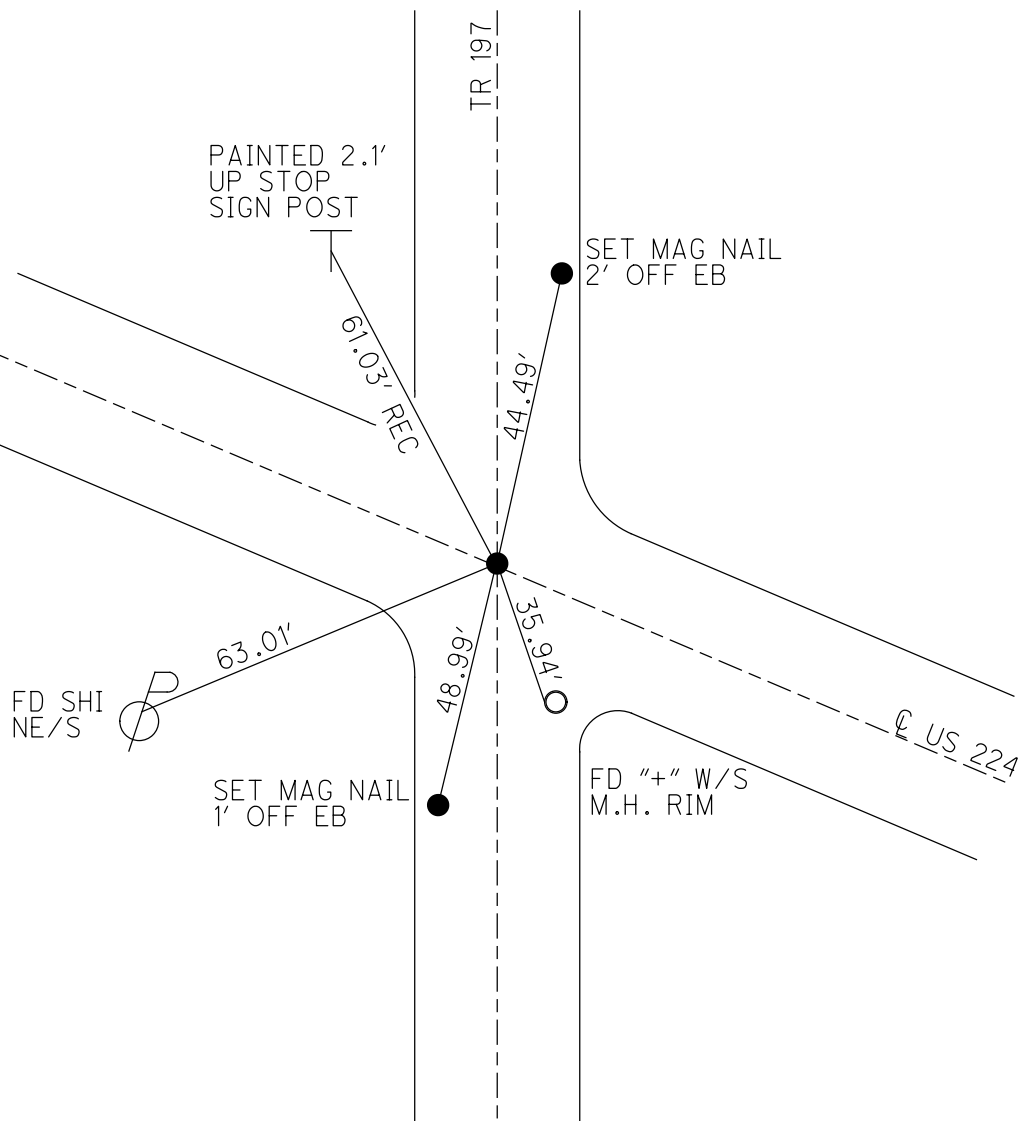
RECORD:
 P.I. STA. 1714+35.47
 $\Delta = 00^\circ 10' \text{ LT}$
 S.L.M. 1715+69
 FD R.R. SPIKE
 7-18-1983

SET P.K./WASHER
 11/8/83

SET P.K./WASHER
 9/10/93 RCC

FD PK NAIL
 GPS, REFH91
 06-02-15

SET MAG/WASHER
 GPS, NEWREFH91
 9-22-16, JFO



O.D.O.T. DISTRICT 2 SURVEY OFFICE

PERSONNEL

REFERENCE NO. 91 H

SHEET 20 OF 22

NOTES CHENEY

DATE 7/20/93

ROUTE US 224

H.C. RIPPLE

WEATHER FAIR

COUNTY SENECA

R.C. BARBOUR

TEMP. 80°

TOWNSHIP VENICE

GEYMAN

SECTION 18

T 1 N R 18 E

TYPE MONUMENT P.K./WASHER

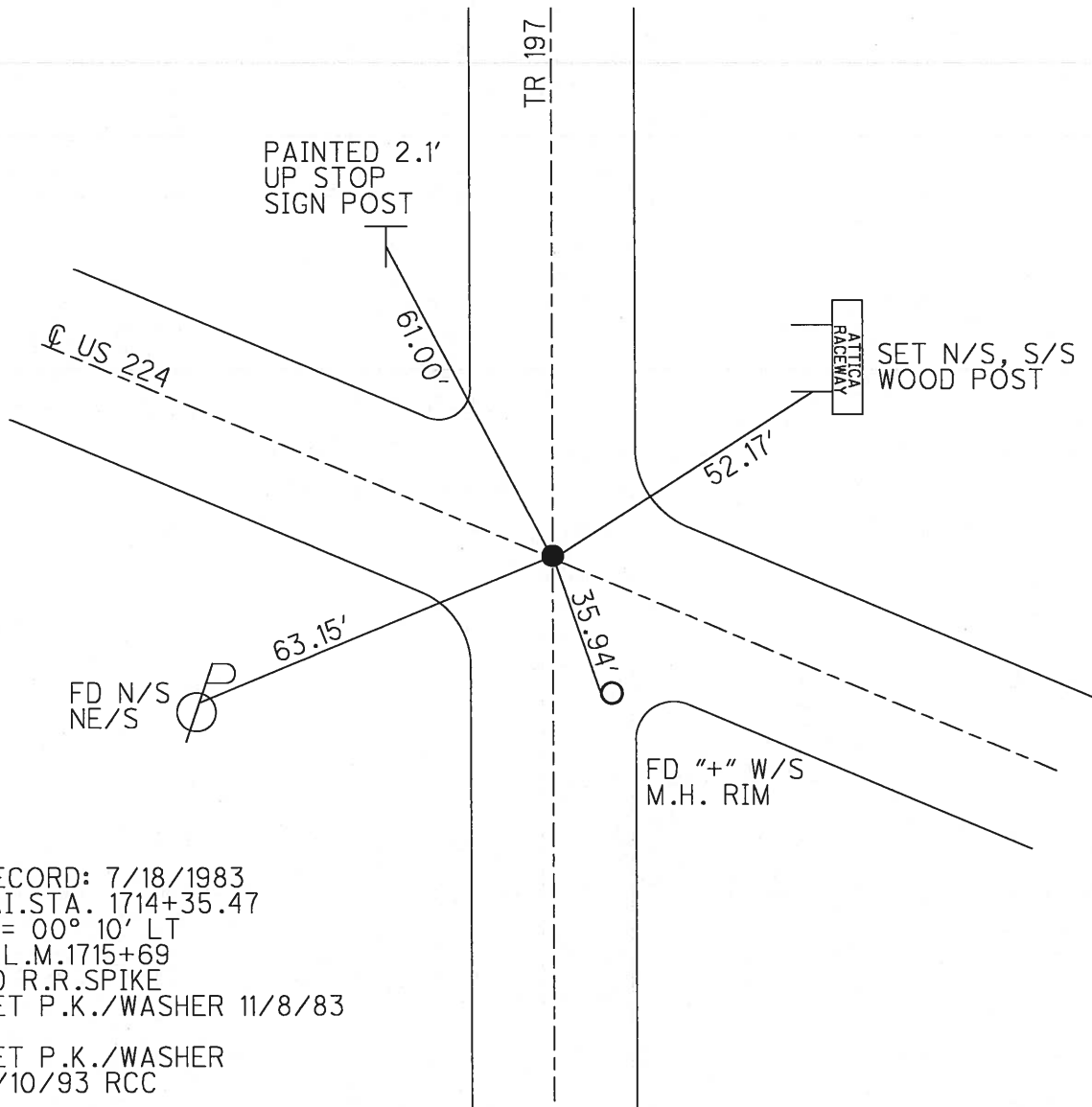
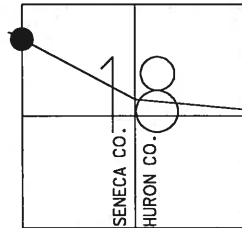
ON SURFACE - ~~BELOW~~ ON

LEFT - C PAV'T - RIGHT ON

11' TO RT EDGE PAVEMENT

S.L.M. 1661+78

Grid: Northing: _____ Easting: _____



RECORD: 7/18/1983
 P.I.STA. 1714+35.47
 $\Delta = 00^\circ 10' \text{ LT}$
 S.L.M. 1715+69
 FD R.R.SPIKE
 SET P.K./WASHER 11/8/83

SET P.K./WASHER
 9/10/93 RCC

O.D.O.T. DISTRICT 2 SURVEY OFFICE

PERSONNEL

REFERENCE NO. 91-A

SHEET 19 OF 21

NOTES CHENEY

H.C. RIPPLE

DATE 7-20-1993

ROUTE #224

R.C. BARBOUR

WEATHER FAIR

COUNTY SENECA

GEYMAN

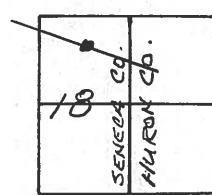
TEMP. 80°

TOWNSHIP VENICE

SECTION 18

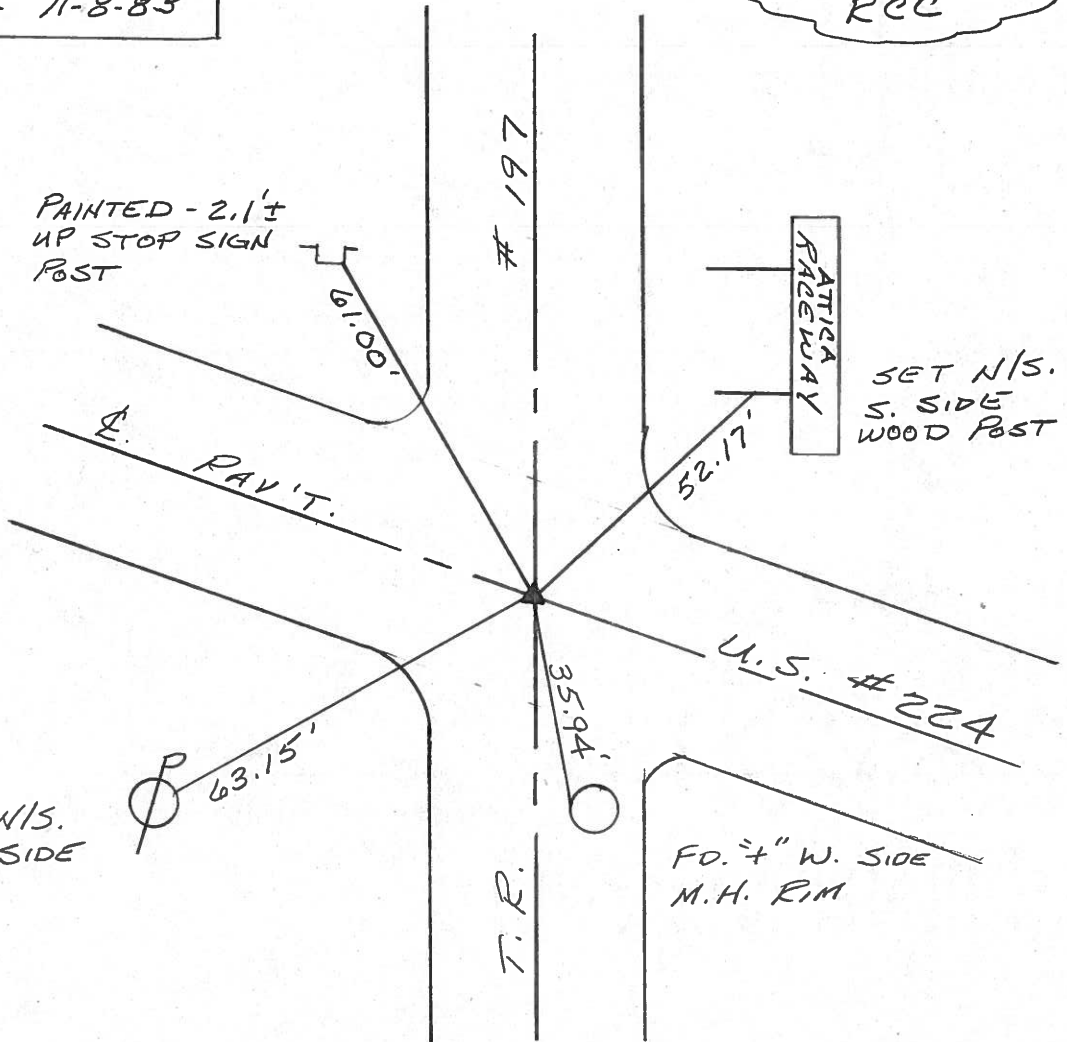
T.1 N. R. 18 E

TYPE MONUMENT PK/WASHER
 ON SURFACE - ~~BELOW~~ ON
~~LEFT - & PAV'T. - RIGHT~~ ON
11' TO RT. EDGE PAVEMENT
 S.L.M. 1661+78



RECORD: 7-18-1983
 P.I. STA. 1714+35.47
 $\Delta = 00^{\circ}10'$ LT.
 SLM 1715+69
 FD. R.P. SPR.
 SET PK/WASHER 11-8-83

SET PK/WASHER
 9-10-1993
 RCC



County SENECA S.R.U.S. 224

Date 7-18-83

Township VENICE

Weather HAZY

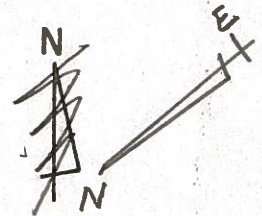
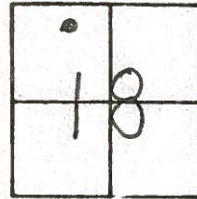
Section 18

Temp. +80°

T N, R E

Personnel HOFFMAN
HOUSEHOLDER
LOEHRKE
BARNHISEL

91-H



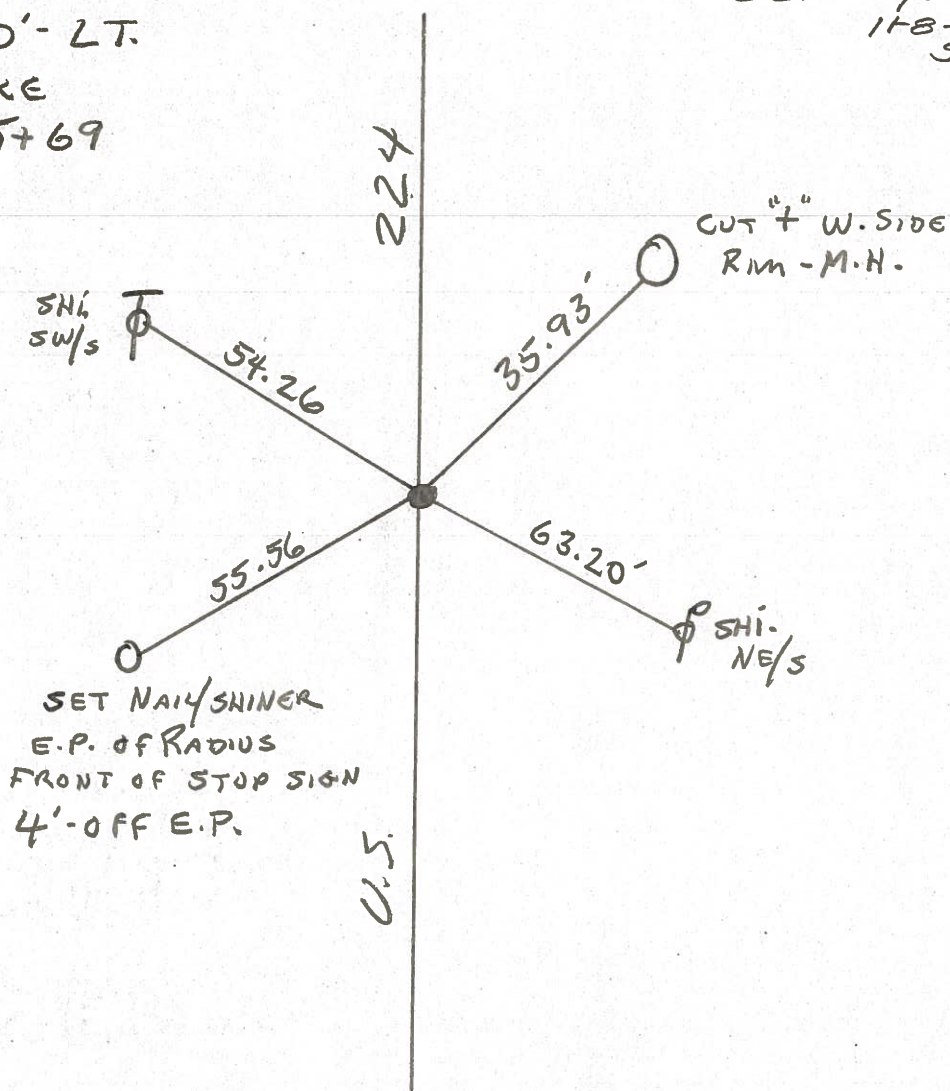
P.I. 1714+35.47

$\Delta = 0^\circ - 10' - LT.$

FD. R.R. SPIKE

S.L.M. 1715+69

SET PK/WASHER
 118-83
 S.W.H.



PERSONNEL TITLE PERSONNEL TITLE

COUNTY Seneca DATE 1-13-65

S. R. U.S. # 224 WEATHER

SEC. TEMP.

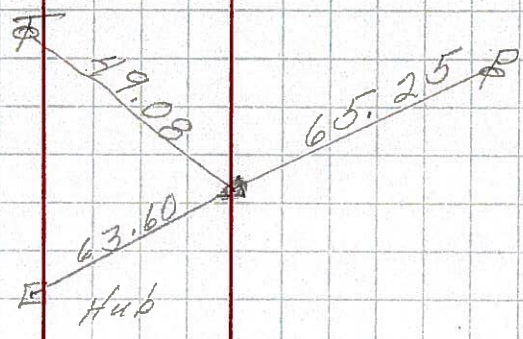
DESCRIPTION Attica - Huron Co. Line JOB NO.

LEFT CENTER LINE RIGHT

91-I

P.O.T.
1725+90.40
R.R. SPK.

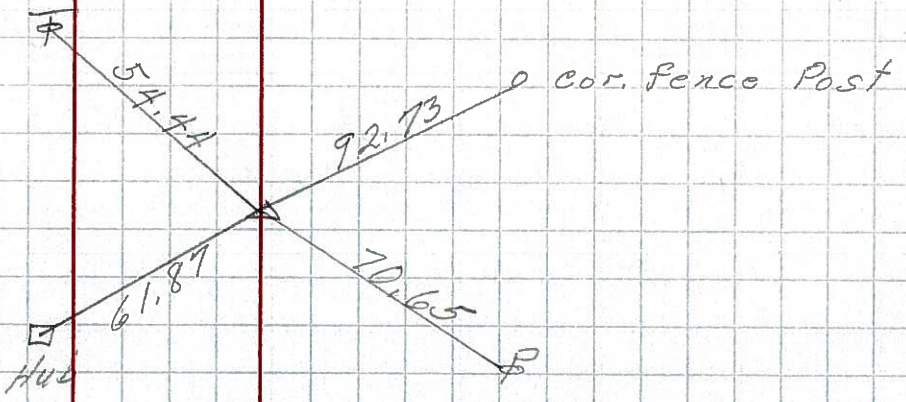
8655



91-H

P.I.
1714+35.47
 $\Delta = 0^{\circ}10' Lt$
R.R. SPK.

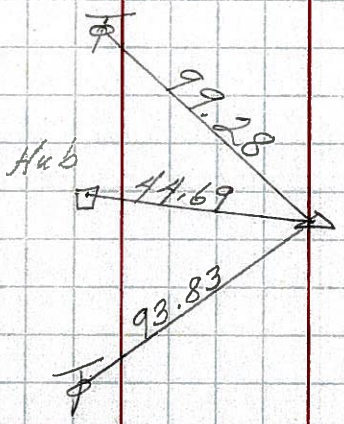
213
8654



91-GG

P.I.
1698+76.81
 $\Delta = 0^{\circ}05' R$
R.R. SPK.

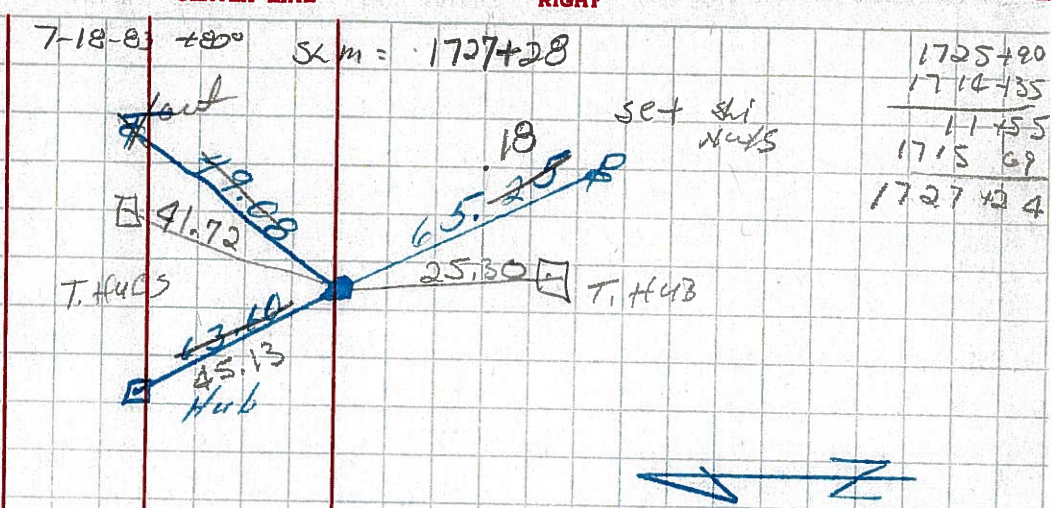
212
8653



PERSONNEL TITLE PERSONNEL TITLE COUNTY Seneca DATE 1-13-66
 S. R. U.S. #224 WEATHER
 SEC. TEMP.
 DESCRIPTION Attica - Huron Co. Line

91-I

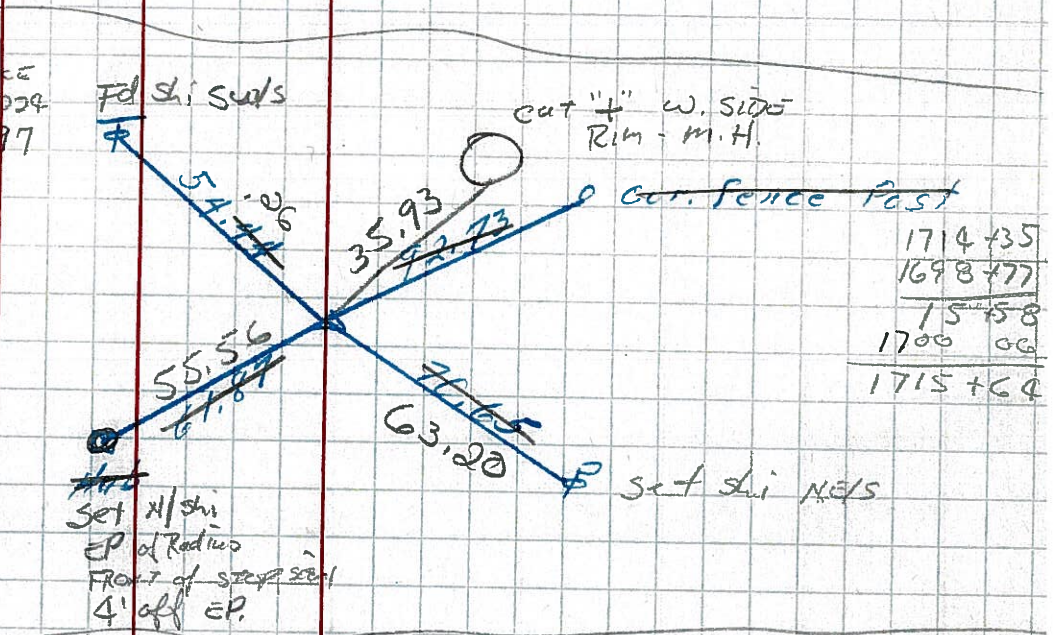
Fd TOR SPK surface
 ox & paint
 N EP 11.7
 S SP 11.8
 P.C.T.
 1725+90.40
 R.R. SPK.



1725+90
 1714+35
 11+55
 1715 69
 1727 44

91-H

7-18-83 +80°
 Fd RR SPK surface
 ox & paint U.S. 224
 & paint Top Rd 197
 SLM = 1715+69
 P.I.
 1714+35.47
 $\Delta = 0^\circ 10' L$
 R.R. SPK.

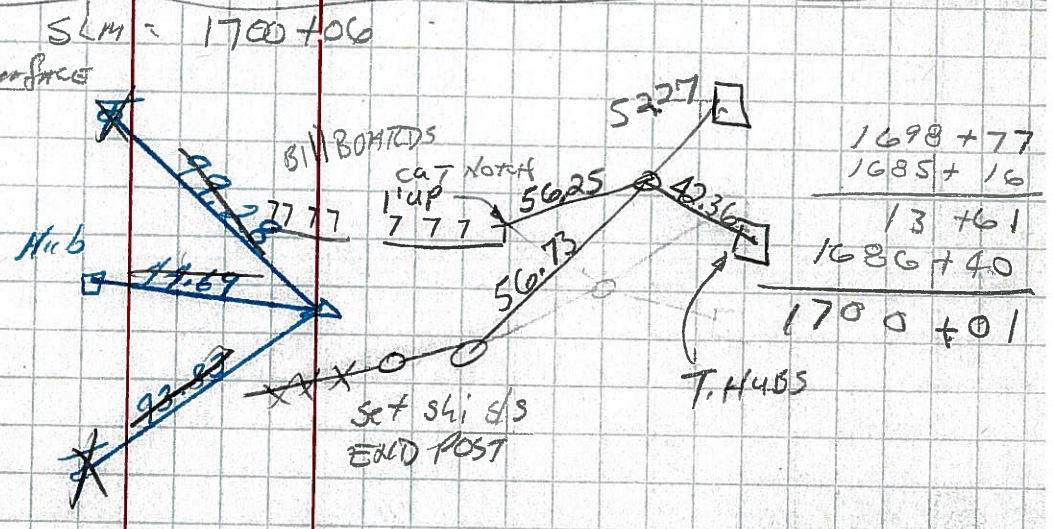


1714+35
 1698+77
 15+58
 1700 00
 1715+69

0.9 2+4
 11.1 Nap
 B.1 Sp

11-66

7-18-83 +80°
 Fd RR SPK surface
 P.I.
 1698+76.81
 $\Delta = 0^\circ 05' R$
 R.R. SPK.



1698+77
 1685+16
 13+61
 1686+40
 1700+01

PERSONNEL TITLE PERSONNEL TITLE

Cronin _____ Schneider _____
Barbour _____ Messer _____
Ripple _____

COUNTY Sonoma DATE Aug. 9/63

S. R. #224 WEATHER _____

SEC. Africa East to Co. Line TEMP. _____

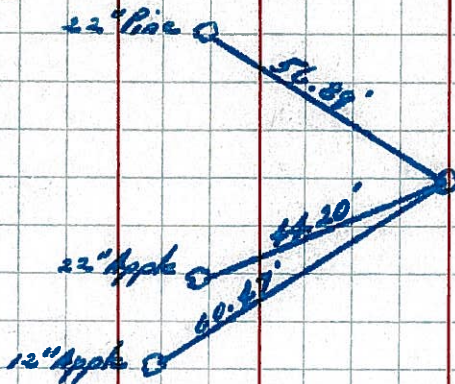
DESCRIPTION Ties for Control Points JOB NO. _____

LEFT CENTER LINE 224 RIGHT

* All Ties Plumbed

✓ P.O.T.

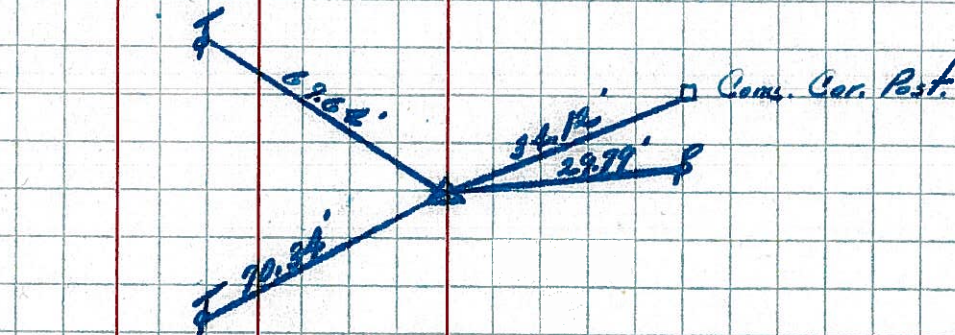
91-F 1670+80.25
Set P.K. Nail



91-G

✓ P.I.

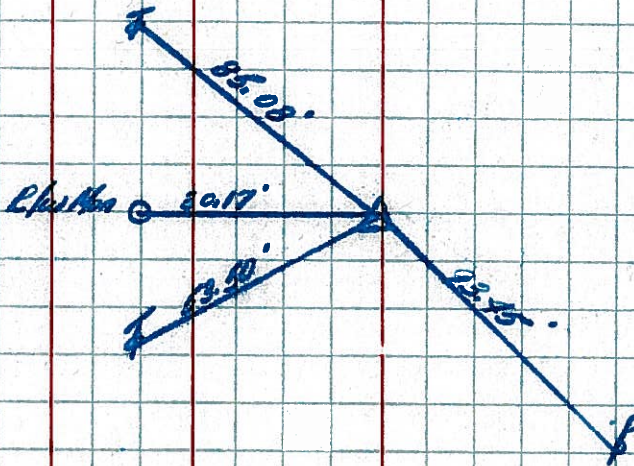
1685+16.43
Set P.K. Nail
 $\Delta = 0^\circ 11' \text{ Rt.}$



91-GG

✓ P.I.

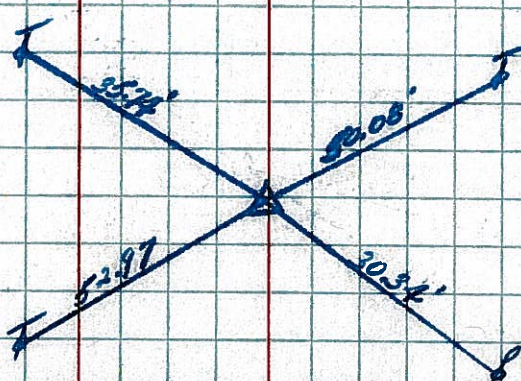
1698+76.81
 $\Delta = 0^\circ 05' \text{ Rt.}$
Set P.K. Nail



91-H

✓ P.I.

1714+35.47
 $\Delta = 0^\circ 10' \text{ Lt.}$
Set P.K. Nail



PERSONNEL TITLE PERSONNEL TITLE

COUNTY Seneca DATE 10-11-49

S. R. #224 WEATHER

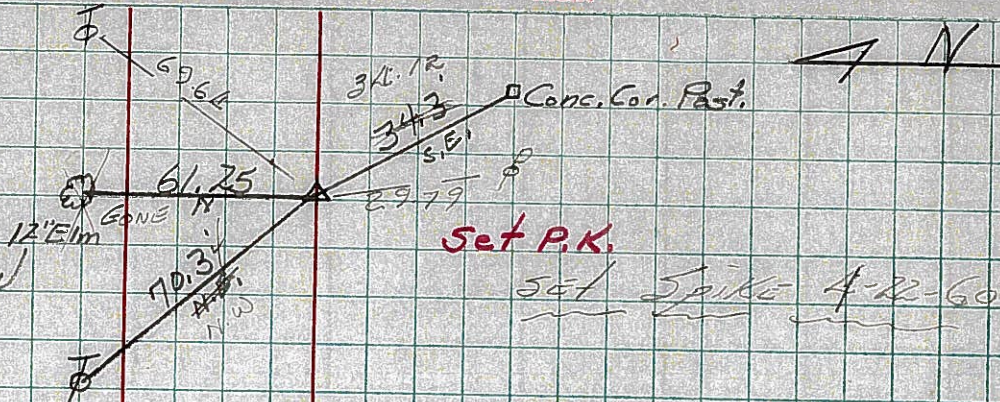
SEC. G-D-F-E TEMP.

DESCRIPTION SH. #272

LEFT CENTER LINE RIGHT JOB NO.

91-G

Sta. 369+93
Δ = 0°-11' Rt.
E.P. Spike on g R/W
1685+18.6 #211



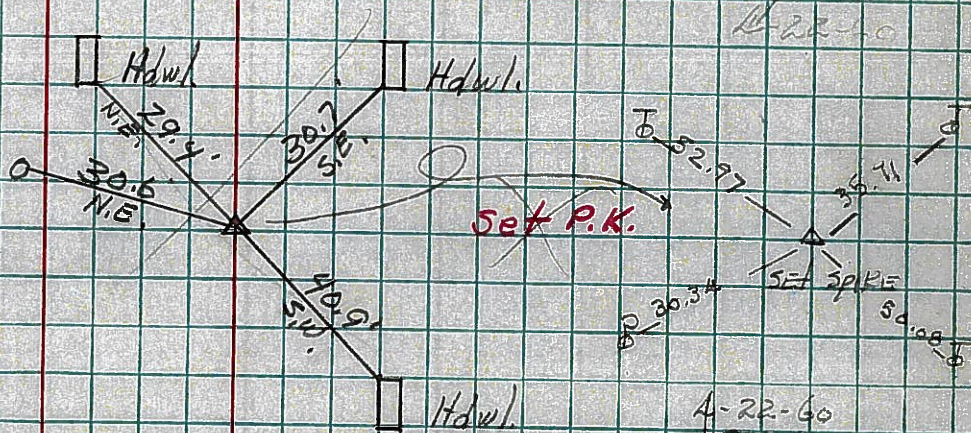
91-GG

Sta. 383+50.7
Δ = 0°-05' Rt.
E.P. Spk. on g of R/W
1698+76.3 #212



91-H

Sta. 399+10.7
Δ = 0°-09' Lt
E.P. Spike on g R/W
1714+36.3 #213



1748+52.15 = Survey

1748+73.6 = S.L.D.

Sta. 433+26.55
Δ = 20°-06' Lt #214

Fd. Nothing

Seneca-Huron Co. Line
End of Sec. E.