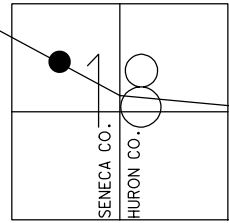


O.D.O.T. DISTRICT 2 SURVEY OFFICE (USE ONLY)

PERSONNEL	REFERENCE NO.	91 I	SHEET	8	OF	9
NOTES	LEU	DATE	06-04-15	ROUTE	US 224	
H.C.	O'DONNELL	WEATHER	FAIR	COUNTY	SENECA	
R.C.	RHOADES	TEMP.	80°	TOWNSHIP	VENICE	
				SECTION	18	
				T	1	N
				R	18	E

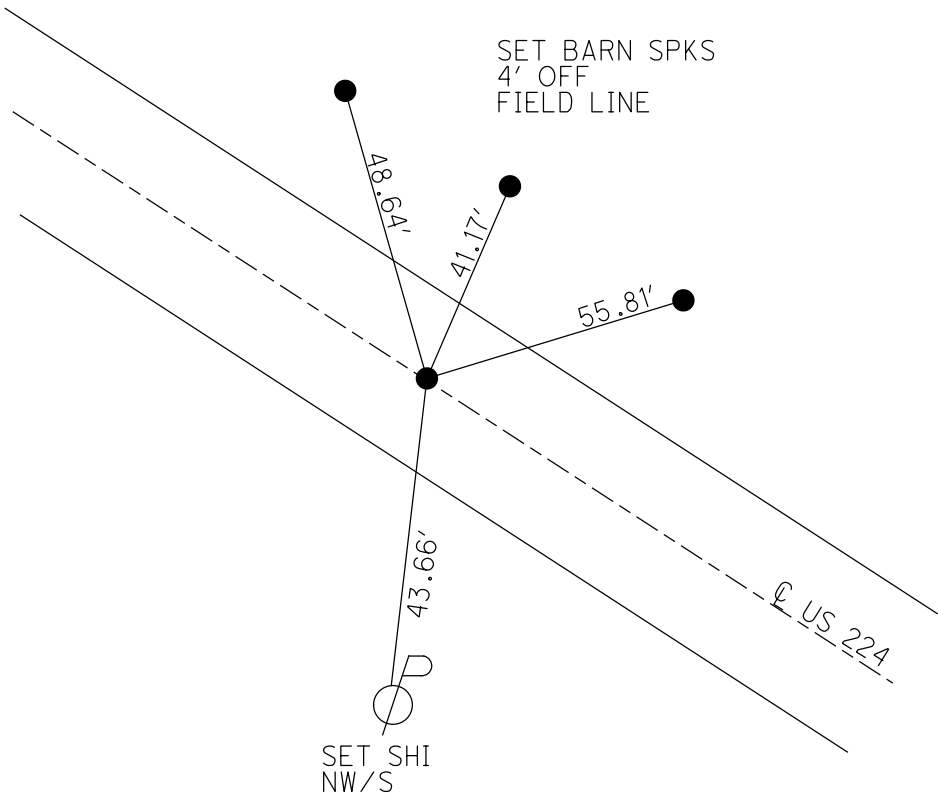
TYPE MONUMENT PK NAIL
~~ON SURFACE~~ - BELOW 1"
 LEFT - ☉ PAV'T - RIGHT ON
11.7' TO N EDGE PAVEMENT
 S.L.M. 1727+28 REC



GRID: NORTHING: 503361.2884 EASTING: 1875077.868

RECORD:
 POT STA. 1725+90.40
 S.L.M. 1727+28
 FD R.R. SPIKE
 7-08-83

SET P.K./WASHER
 11/8/83
 SET P.K./WASHER
 9/10/93 RCC
 FD PK NAIL
 GPS, REFI91
 06-04-15
 SET MAG/WASHER
 GPS, NEWREFI91
 9-22-16, JFO



SET SHI
 NW/S

O.D.O.T. DISTRICT 2 SURVEY OFFICE

PERSONNEL

REFERENCE NO. 91 I

SHEET 21 OF 22

NOTES CHENEY

DATE 7/20/93

ROUTE US 224

H.C. RIPPLE

WEATHER FAIR

COUNTY SENECA

R.C. BARBOUR

TEMP. 80°

TOWNSHIP VENICE

GEYMAN

SECTION 18

T 1 N R 18 E

TYPE MONUMENT P.K./WASHER

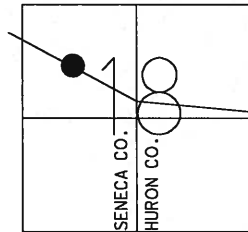
ON SURFACE - ~~BELOW~~ ON

LEFT - C PAV'T - RIGHT ON

11.7' TO N EDGE PAVEMENT

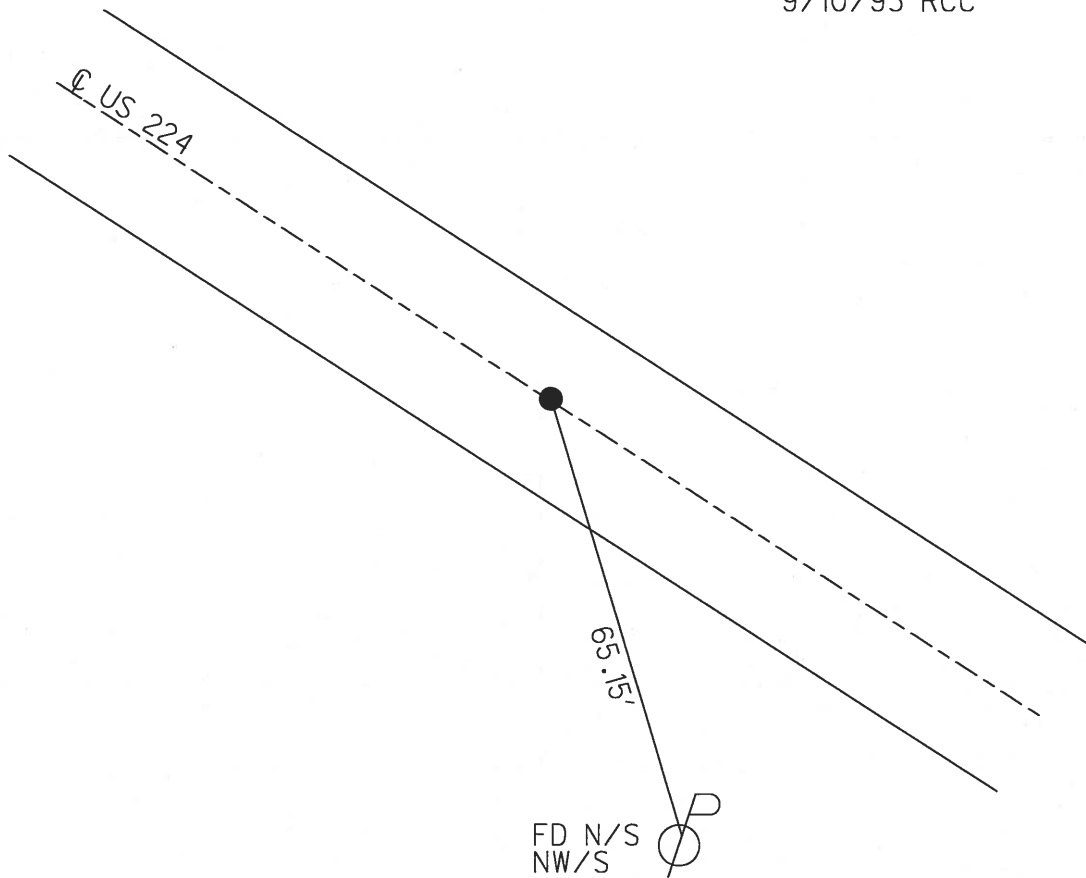
S.L.M. 1673+37

Grid: Northing: _____ Easting: _____



RECORD: 7/18/1983
P.I. STA. 1725+90.40
S.L.M. 1727+28
FD R.R. SPIKE
SET P.K./WASHER 11/8/83

SET P.K./WASHER
9/10/93 RCC



O.D.O.T. DISTRICT 2 SURVEY OFFICE

PERSONNEL

REFERENCE NO. 91-I

SHEET 20 OF 21

NOTES CHENEY

H.C. RIPPLE

DATE 7-20-1993

ROUTE # 224

R.C. BARBOUR

WEATHER FAIR

COUNTY SENECA

GEYMAN

TEMP. 80°

TOWNSHIP VENICE

SECTION 18

T. 1 N R. 18 E

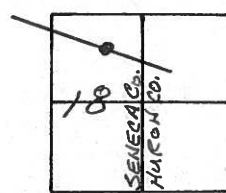
TYPE MONUMENT P.K./WASHER

ON SURFACE - ~~BELLO~~ ON

~~LEFT~~ & PAV'T. - ~~RIGHT~~ ON

11.7' TO N. EDGE PAVEMENT

S.L.M. 1673+37



RECORD: 7-18-1983

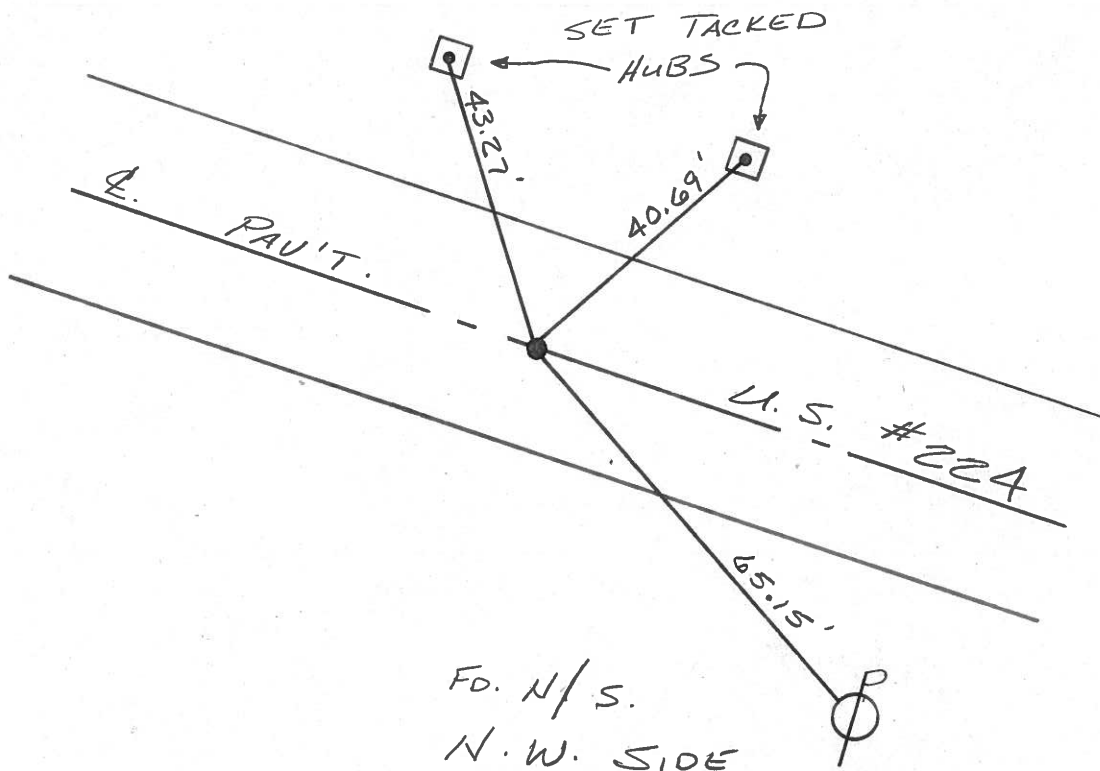
P.O.T. STA. 1725+90.40

S.L.M. 1727+28

FD. R.R. SPK.

SET PK/WASHER 11-8-83

SET PK/WASHER
9-10-1993
RCC



County SENEGA ~~S.R.~~ U.S. 224

Date 7-18-83

Township VENICE

Weather HAZY

Section 18

Temp. +80°

T N, R E

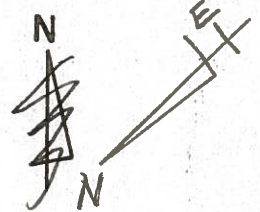
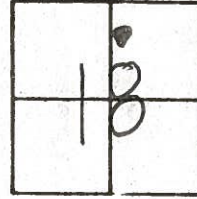
Personnel HOFFMAN

HOUSEHOLDER

LOENRKE

BARNISEL

Q1-I



P.O.T. 1725+90.40

FD. R.R. SPIKE

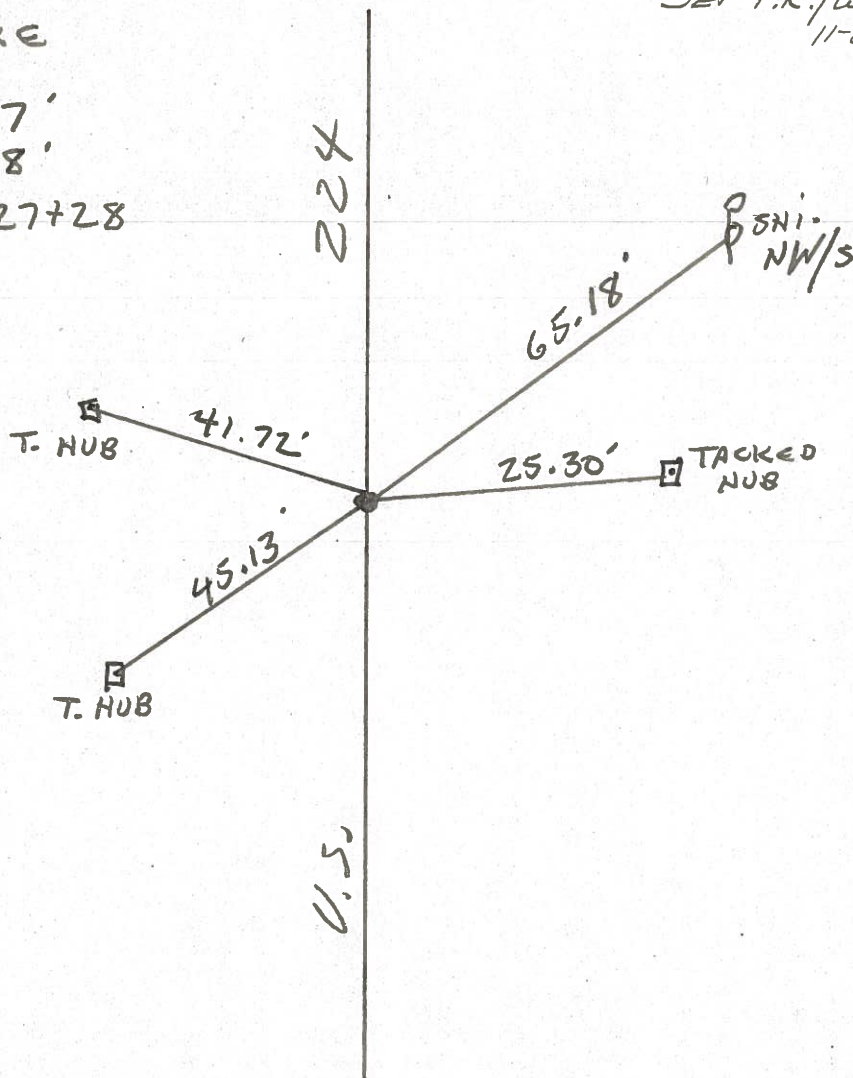
ON & PAUT.

N. E.P. - 11.7'

S. E.P. - 11.8'

S.L.M. 1727+28

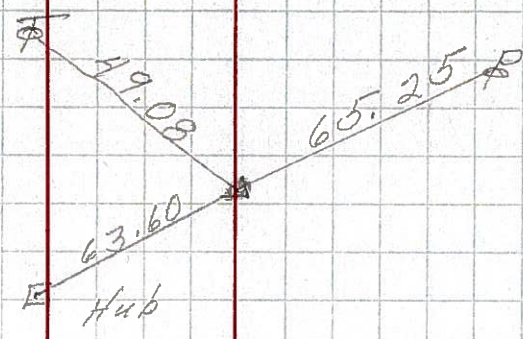
SET P.K./WASHER
11-8-83
S.W.H.



PERSONNEL _____ TITLE _____ PERSONNEL _____ TITLE _____
 COUNTY Seneca DATE 1-13-65
 S. R. U.S. # 224 WEATHER _____
 SEC. _____ TEMP. _____
 DESCRIPTION Attica - Huron Co. Line JOB NO. _____

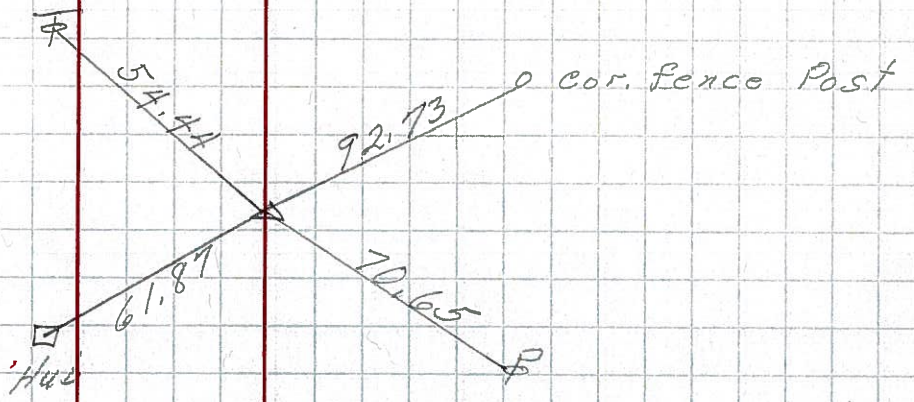
91-I

P.O.T.
 1725+90.40
 R.R. SPK.
 8655



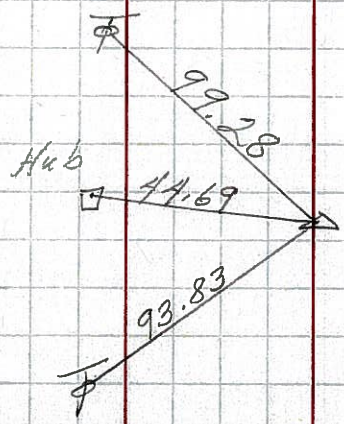
91-H

P.I.
 1714+35.47
 $\Delta = 0^{\circ}10' L$
 R.R. SPK.
 213
 8654



91-GG

P.I.
 1698+76.81
 $\Delta = 0^{\circ}05' R$
 R.R. SPK.
 212
 8653



PERSONNEL TITLE PERSONNEL TITLE

COUNTY Seneca DATE 1-13-66

S. R. U.S. # 224 WEATHER

SEC. TEMP.

DESCRIPTION A Hica - Huron Co. Line JOB NO.

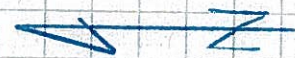
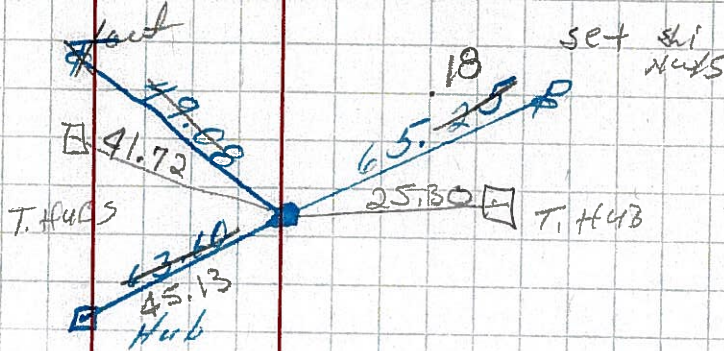
LEFT CENTER LINE RIGHT

Fd RR S&K surface
ORL & part
N EP 11.7
S EP 11.8

7-18-83 ±80° SLM = 1727+28

1725+90
1714+35
11.55
1715 69
1727+24

P.C.T.
1725+90.40
R.R. SPK.

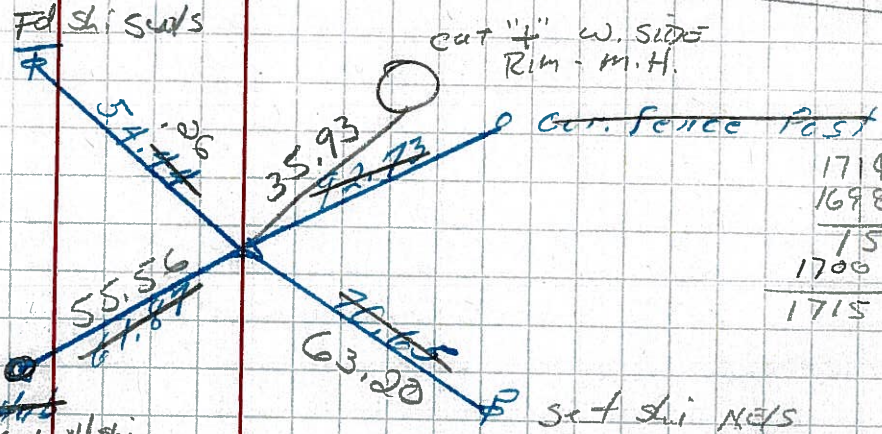


7-18-83 ±80°
Fd RR S&K surface
ORL & part U.S. 224
& part Twp Rd 197

SLM = 1715+69

1714+35
1698+77
15.58
1700 00
1715+69

P.I.
1714+35.47
Δ = 0°10' LT
R.R. SPK.



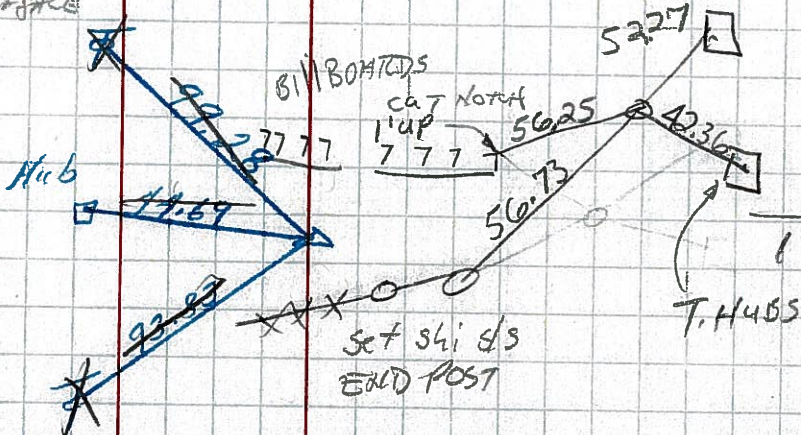
213

0.9 L + 4
11.1 Nup
13.1 S&K

7-18-83 ±80° SLM = 1700+06
Fd RR S&K surface

1698+77
1685+19
13+61
1686+40
1700+01

P.I.
1698+76.81
Δ = 0°05' R
R.R. SPK.



212

91-I
91-H
11-66

PERSONNEL TITLE PERSONNEL TITLE

Cronin
Barbour
Ripple

Schneider
Hosser

COUNTY Seneca

DATE Aug. 9/63

S. R. # 224

WEATHER _____

SEC. Attica East to Co Line TEMP. _____

DESCRIPTION Ties for Control Points

JOB NO. _____

LEFT

CENTER LINE

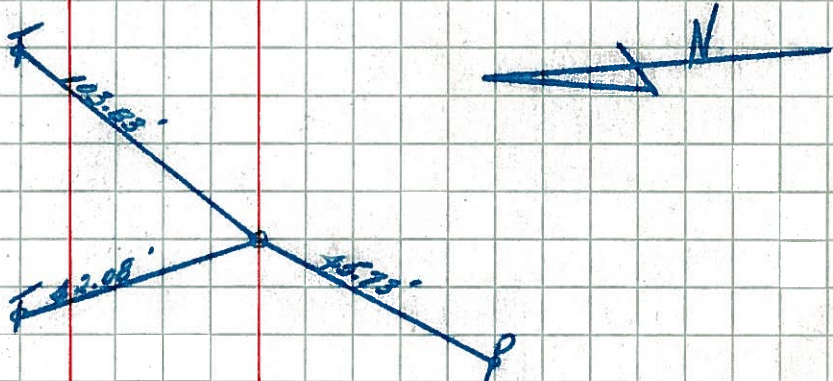
224

RIGHT

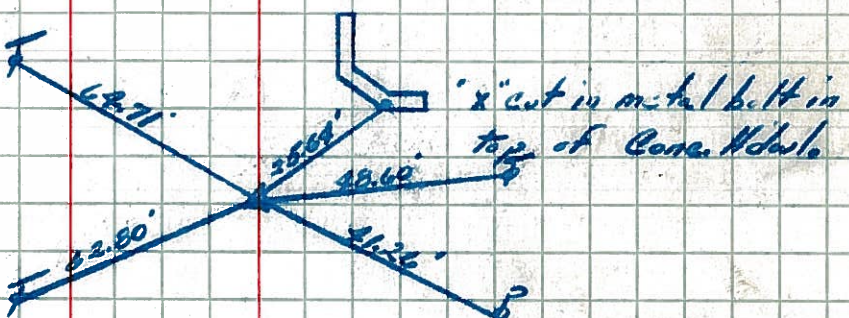
* All Ties Plumbed

(91-I)

P.O.T.
1725+90.40
Set Nail & Shiner



P.I. could not find
1748+54.25
 $\Delta = 20^{\circ} 06' 30''$ Lt.
Set P.K. Nail



(92)

1748+46.27
Intersection of Co. line

