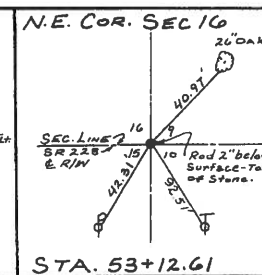
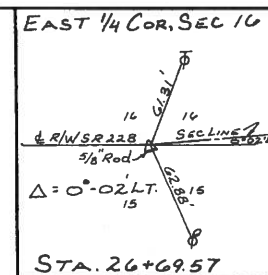


LOCATION MAP



S. E. 1/4, SEC. 16, T3N, R16E, ADAMS TWP

N. E. 1/4, SEC. 16, T3N, R16E
ADAMS TWP



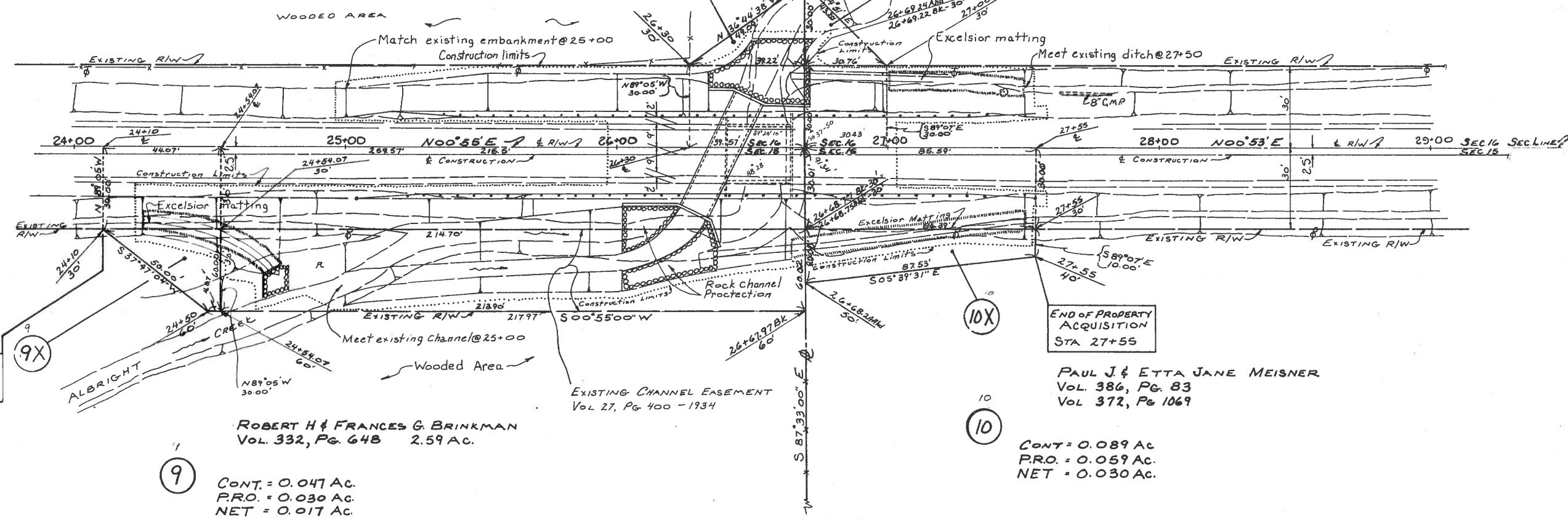
FHWA REGION	STATE	PROJECT
5	OHIO	

SEN 228-0.50-PART 3
JOB No. 625120
PLAN NO BR-76-85

29
29
3
3

7
DONALD ENGEMAN
HAZEL C. ENGEMAN
MARY BIRCH
VOL 404, PG 475
80 AC.
CONT = 0.041 AC.
P.R.O. = 0.027 AC.
NET = 0.014 AC.

8
LITTLE BETHEL CHURCH
VOL 372, PG 15 2.00 AC.
CONT = 0.032 AC.
P.R.O. = 0.021 AC.
NET = 0.011 AC.



BEGIN PROPERTY ACQUISITION STA. 24+10

9
ROBERT H & FRANCES G. BRINKMAN
VOL 332, PG 648 2.59 AC.
CONT = 0.047 AC.
P.R.O. = 0.030 AC.
NET = 0.017 AC.

R/W SUMMARY

PAR No	OWNER	DEED RECORD		DEED AREA ACRES	TOTAL PRO ACRES	TOTAL TAKE ACRES	PRO IN TAKE ACRES	NET TAKE ACRES	RESIDUE ACRES	REMARKS
		VOL.	PAGE							
7-X	DONALD ENGEMAN, ET AL	404	475	80	2.727	0.041	0.027	0.014	79.959	
8-X	LITTLE BETHEL CHURCH	372	15	2.00	0.203	0.032	0.021	0.011	1.968	
9-X	ROBERT H & FRANCES G. BRINKMAN	332	648	2.59	0.316	0.047	0.030	0.017	2.543	EXISTING CHANNEL EASEMENT VOL 27, PG 400 - 1934
10-X	PAUL J & ETTA JANE MEISNER	372	1069	88.27	0.909	0.089	0.059	0.030	88.181	

SW 1/4, SEC. 15, T3N, R16E, ADAMS TWP

NW 1/4, SEC. 15, T3N, R16E, ADAMS TWP

ALBRIGHT CREEK

PARCEL No	DATE	REMARKS