

O.D.O.T. DISTRICT 2 SURVEY OFFICE (USE ONLY)

PERSONNEL

REFERENCE NO. 1

SHEET 1 OF 11

NOTES RHOADES DATE 3/14/18
 H.C. O'DONNELL WEATHER CLOUDY
 R.C. RHOADES TEMP. 26°

ROUTE SR 228
 COUNTY SENECA
 TOWNSHIP ADAMS
 SECTION 16
 T 3 N R 16 E

DWG BY MILLER PID 102817

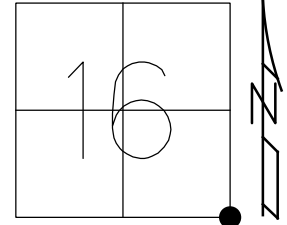
TYPE MONUMENT P.K./WASHER

ON SURFACE - ~~BELOW~~ ON

OFFSET \varnothing PAVEMENT 1' LT : ~~RT~~

- TO - EDGE PAVEMENT

STATION: 0+00



HORZ.DATUM: NAD83(2011)

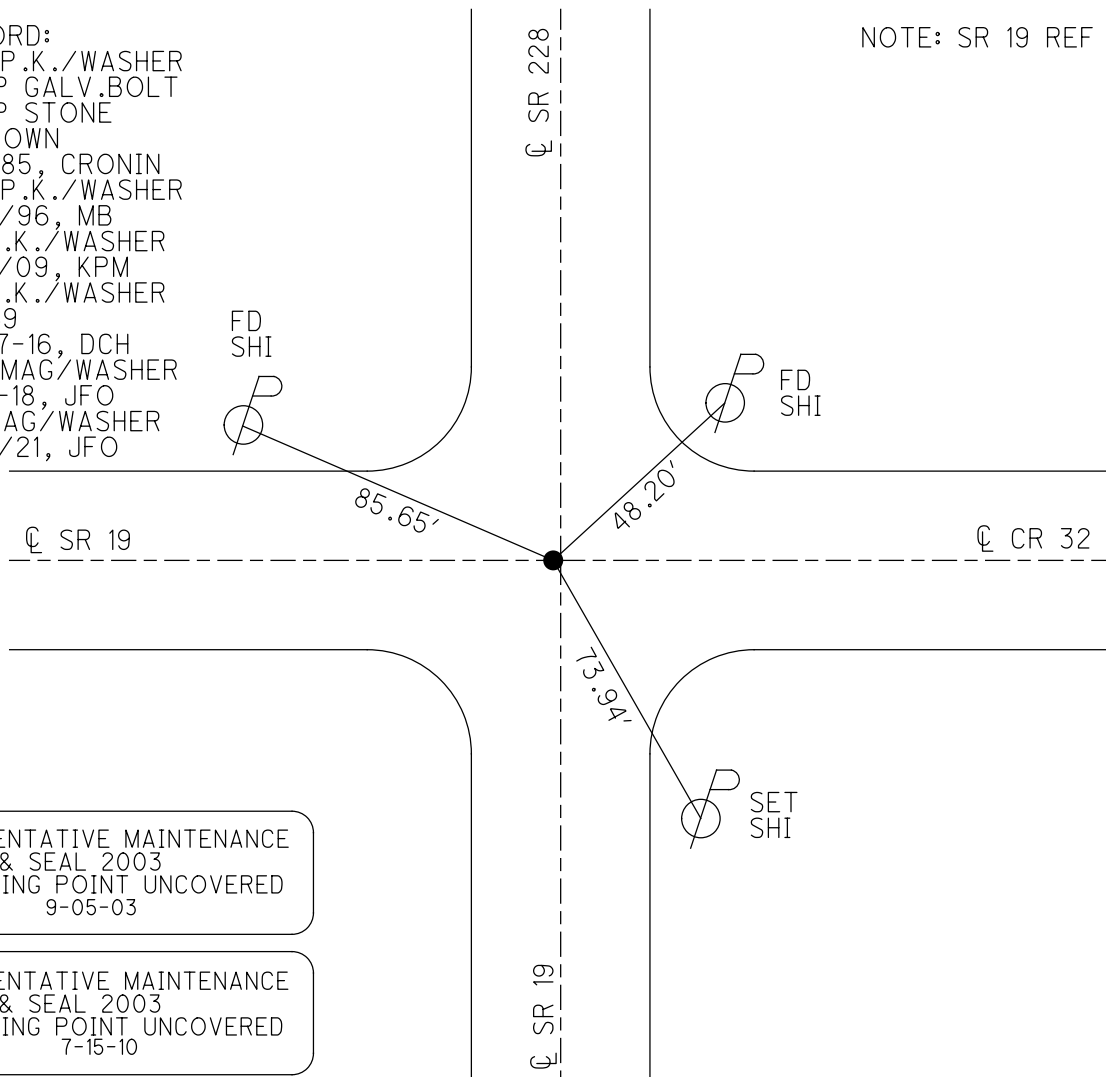
GEOID: NAVD88 2012A

GRID: NORTHING: 563839.456

EASTING: 1826745.385

RECORD:
 SET P.K./WASHER
 ATOP GALV.BOLT
 ATOP STONE
 15" DOWN
 9-4-85, CRONIN
 SET P.K./WASHER
 10/2/96, MB
 FD P.K./WASHER
 7/14/09, KPM
 FD P.K./WASHER
 REF69
 10-27-16, DCH
 SET MAG/WASHER
 10-3-18, JFO
 FD MAG/WASHER
 8/19/21, JFO

NOTE: SR 19 REF 69



PREVENTATIVE MAINTENANCE
 CHIP & SEAL 2003
 EXISTING POINT UNCOVERED
 DATE: 9-05-03

PREVENTATIVE MAINTENANCE
 CHIP & SEAL 2003
 EXISTING POINT UNCOVERED
 DATE: 7-15-10

O.D.O.T. DISTRICT 2 SURVEY OFFICE (USE ONLY)

PERSONNEL _____ REFERENCE NO. 2 SHEET 2 OF 11
 NOTES RHOADES DATE 8/23/21 ROUTE SR 228
 H.C. NIESE WEATHER FOG COUNTY SENECA
 R.C. RHOADES TEMP. 73° TOWNSHIP ADAMS
 DWG BY RHOADES PID PVTRAIN SECTION 16
 T 3 N R 16 E

TYPE MONUMENT P.K./WASHER

ON SURFACE - ~~BELOW~~ ON _____

OFFSET \varnothing PAVEMENT 1.5' LT : ~~RT~~

8.5' TO LT EDGE PAVEMENT

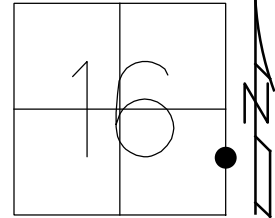
STATION: 18+79

HORZ.DATUM: NAD83 2011

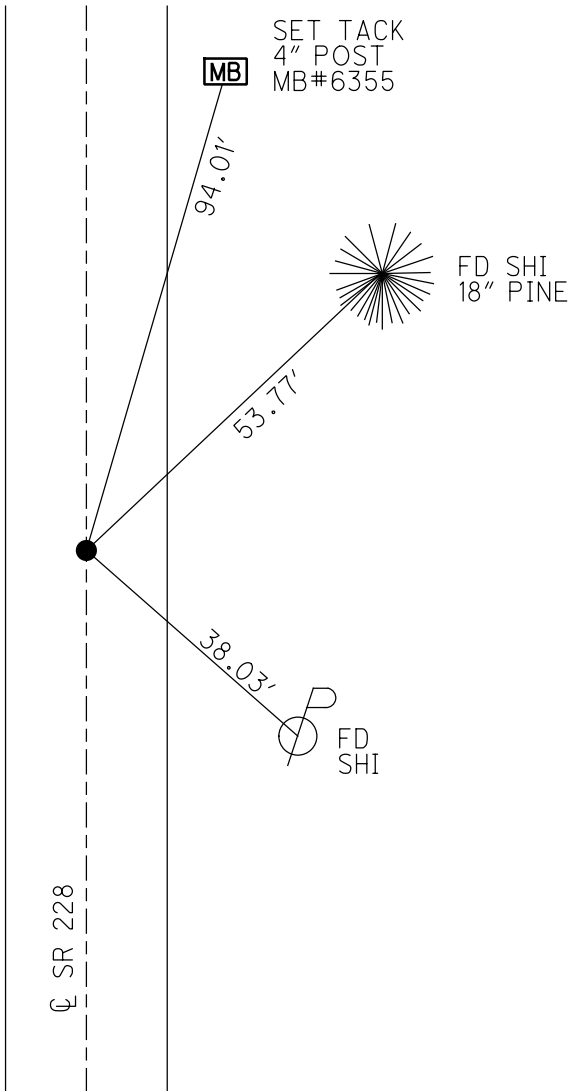
GEOID: NAVD88 2018

GRID: NORTHING: 565717.111

EASTING: 1826760.531



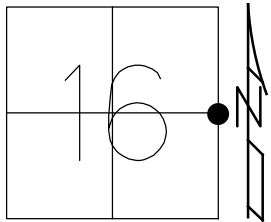
RECORD: P.O.T.
 STA.18+77.40
 SET R.R.SPIKE
 SET P.K./WASHER
 10-2-96, MB
 FD P.K./WASHER
 9/5/03
 FD P.K./WASHER
 SV112
 7/16/09, KPM
 7/15/10
 FD P.K./WASHER
 REF2
 8/23/21, TDN
 FD P.K./WASHER
 2/16/22, JFO
 4/14/23, JMR



O.D.O.T. DISTRICT 2 SURVEY OFFICE (USE ONLY)

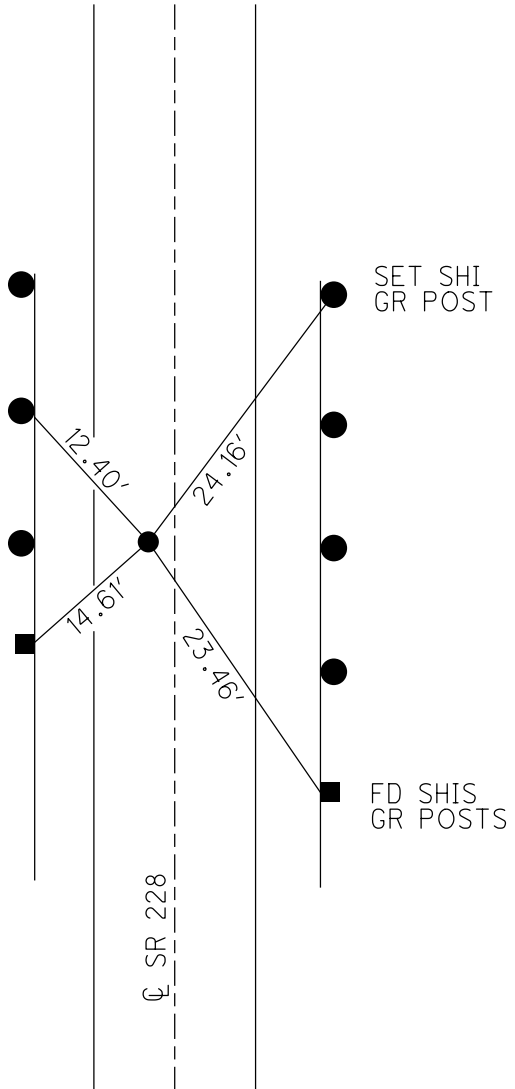
PERSONNEL _____ REFERENCE NO. 3 SHEET 3 OF 11
 NOTES RHOADES DATE 8/23/21 ROUTE SR 228
 H.C. NIESE WEATHER FOG COUNTY SENECA
 R.C. RHOADES TEMP. 73° TOWNSHIP ADAMS
 SECTION 16
 DWG BY RHOADES PID PVTRAIN T 3 N R 16 E

TYPE MONUMENT 5/8" IPIN
~~ON SURFACE~~ - BELOW 6"
 OFFSET $\text{\textcircled{C}}$ PAVEMENT 3.1" LT : ~~RT~~
6.1" TO LT EDGE PAVEMENT
 STATION: 26+67



HORIZ.DATUM: NAD83 2011 GEOID: NAVD88 2018
 GRID: NORTHING: 566504.353 EASTING: 1826766.888

RECORD: P.I.
 STA. 26+64.86
 $\Delta = 00^\circ 09' \text{ RT } (\text{\textcircled{C}} \text{ SURVEY})$
 $\Delta = 00^\circ 02' \text{ LT } (\text{SEC. LINE})$
 FD STONE
 23" DOWN
 SET 5/8" X 23"
 GALVANIZED IPIN
 A TOP
 9/3/96
 SET P.K./WASHER
 10-2-96 MB
 FD P.K./WASHER
 9/5/03
 SV127
 7/29/09, KPM
 7/15/10
 FD 5/8" IPIN
 6" DOWN
 REF3
 8/23/21, TDN
 2/16/22, JFO
 PAINTED OUT
 4/14/23, JMR



O.D.O.T. DISTRICT 2 SURVEY OFFICE (USE ONLY)

PERSONNEL _____ REFERENCE NO. 4 SHEET 4 OF 11
 NOTES RHOADES DATE 8/23/21 ROUTE SR 228
 H.C. NIESE WEATHER FOG COUNTY SENECA
 R.C. RHOADES TEMP. 73° TOWNSHIP ADAMS
 SECTION 16
 DWG BY RHOADES PID PVTRAIN T 3 N R 16 E

TYPE MONUMENT P.K./WASHER

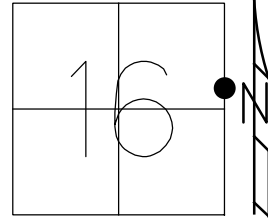
ON SURFACE - ~~BELOW~~ ON

OFFSET 3.5' LT : ~~RT~~
6.3' TO LT EDGE PAVEMENT

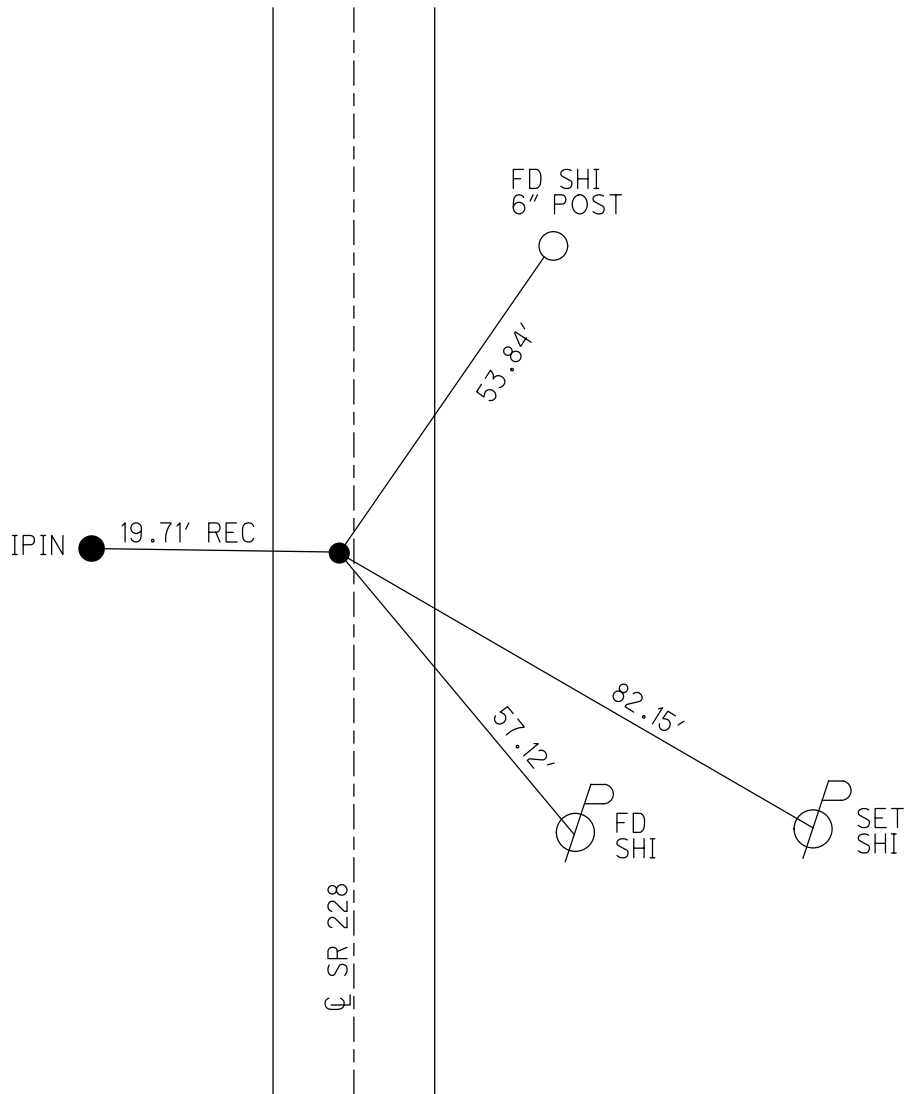
STATION: 31+50

HORZ.DATUM: NAD83 2011 GEOID: NAVD88 2018

GRID: NORTHING: 566991.577 EASTING: 1826772.023



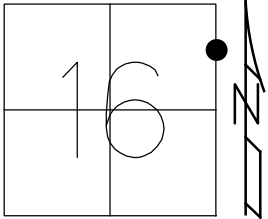
RECORD: P.O.T.
 STA. 31+52.06
 SET R.R. SPIKE
 SET P.K./WASHER
 10-2-96, MB
 FD P.K./WASHER
 9/5/03
 FD P.K./WASHER
 SV113
 7/16/09, KPM
 7/15/10
 FD P.K./WASHER
 REF4
 8/23/21, TDN
 FD P.K./WASHER
 2/16/22, JFO
 FD P.K. SHANK
 4/14/23, JMR



O.D.O.T. DISTRICT 2 SURVEY OFFICE (USE ONLY)

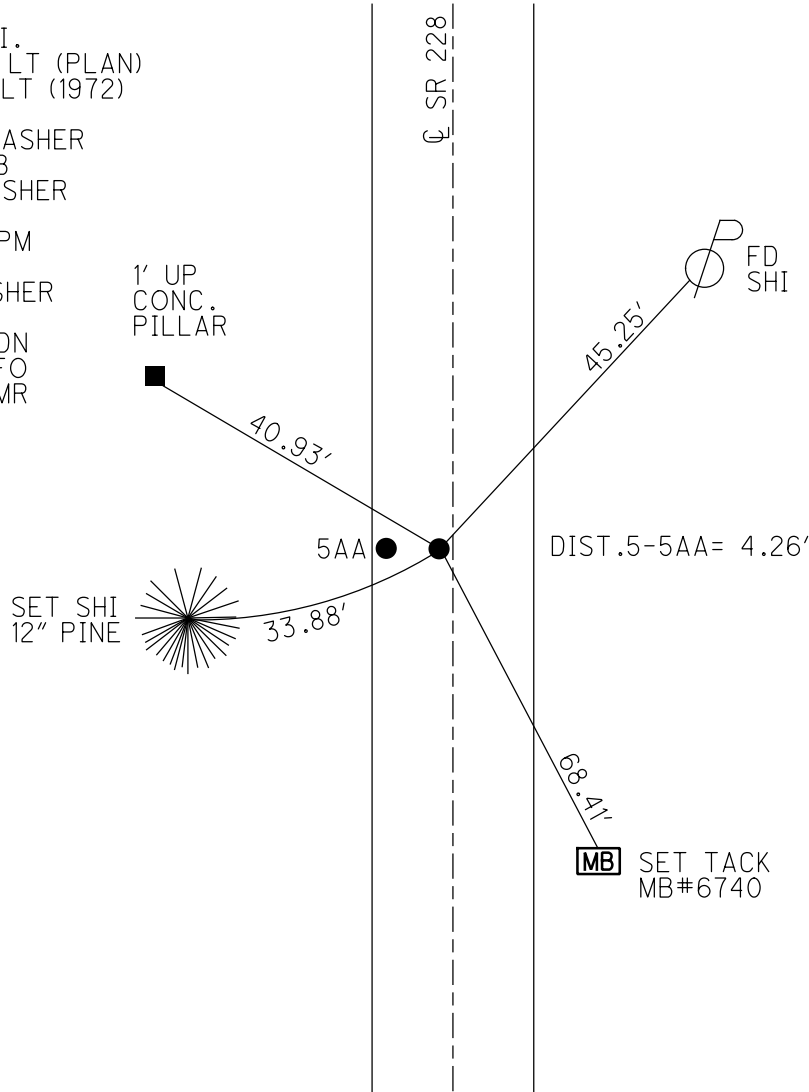
PERSONNEL _____ REFERENCE NO. 5 SHEET 5 OF 11
 NOTES RHOADES DATE 8/23/21 ROUTE SR 228
 H.C. NIESE WEATHER FOG COUNTY SENECA
 R.C. RHOADES TEMP. 73° TOWNSHIP ADAMS
 DWG BY RHOADES PID PVTRAIN SECTION 16
 T 3 N R 16 E

TYPE MONUMENT P.K./WASHER
 ON SURFACE - ~~BELOW~~ ON
 OFFSET CL PAVEMENT 2.8' LT : ~~RT~~
7.5' TO LT EDGE PAVEMENT
 STATION: 39+97



HORZ.DATUM: NAD83 2011 GEOID: NAVD88 2018
 GRID: NORTHING: 567831.923 EASTING: 1826780.896

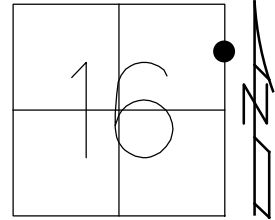
RECORD: P.I.
 $\Delta = 00^\circ 22' \text{ LT (PLAN)}$
 $\Delta = 00^\circ 21' \text{ LT (1972)}$
 9/3/96
 SET P.K./WASHER
 10-2-96, MB
 FD P.K./WASHER
 9/5/03
 7/16/09, KPM
 7/15/10
 FD.P.K./WASHER
 REF5
 8/23/21, TDN
 2/16/22, JFO
 4/14/23, JMR



O.D.O.T. DISTRICT 2 SURVEY OFFICE (USE ONLY)

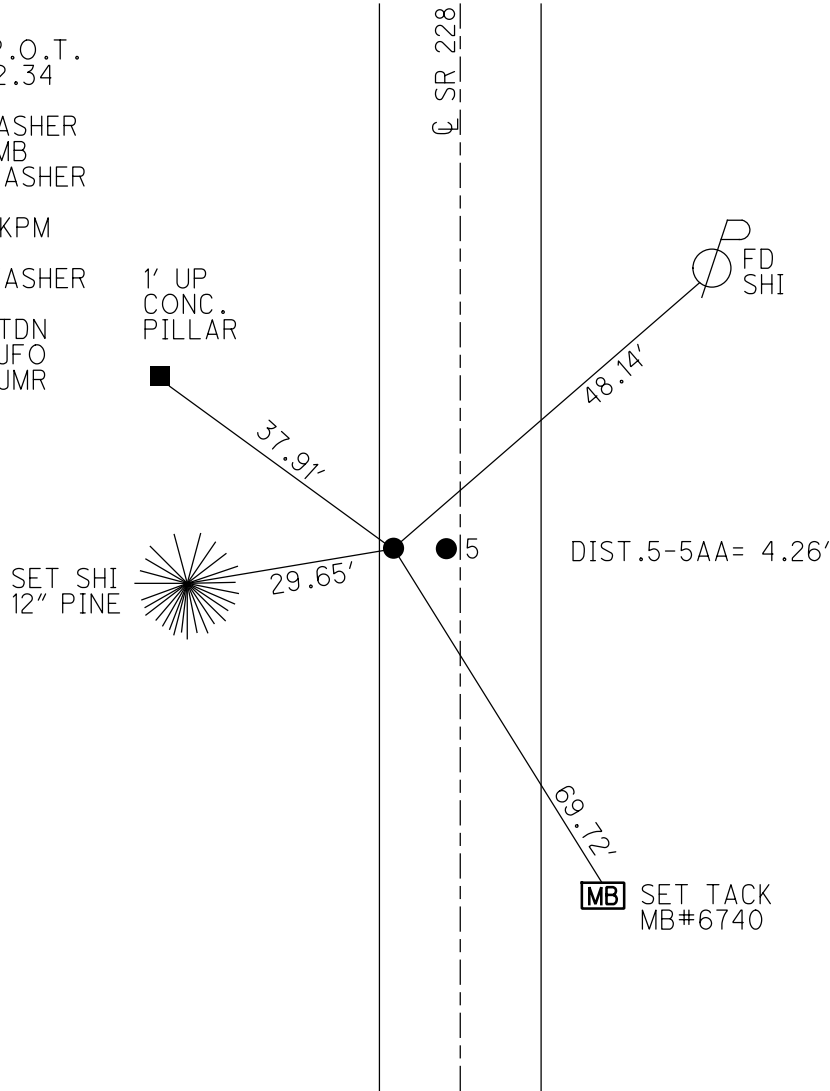
PERSONNEL _____ REFERENCE NO. 5 AA SHEET 6 OF 11
 NOTES RHOADES DATE 8/23/21 ROUTE SR 228
 H.C. NIESE WEATHER FOG COUNTY SENECA
 R.C. RHOADES TEMP. 73° TOWNSHIP ADAMS
 DWG BY RHOADES PID PVTRAIN SECTION 16
 T 3 N R 16 E

TYPE MONUMENT P.K./WASHER
 ON SURFACE - ~~BELOW~~ ON
 OFFSET Q PAVEMENT 7' LT : ~~RT~~
3.28' TO LT EDGE PAVEMENT
 STATION: 39+97



HORZ. DATUM: NAD83 2011 GEOID: NAVD88 2018
 GRID: NORTHING: 567831.948 EASTING: 182677.646

RECORD: P.O.T.
 STA. 39+92.34
 9/3/96
 SET PK/WASHER
 10-2-96, MB
 FD P.K./WASHER
 9/5/03
 7/16/09, KPM
 7/15/10
 FD P.K./WASHER
 REFAA5
 8/23/21, TDN
 2/16/22, JFO
 4/14/23, JMR



O.D.O.T. DISTRICT 2 SURVEY OFFICE (USE ONLY)

PERSONNEL _____ REFERENCE NO. 5 A SHEET 7 OF 11

NOTES RHOADES DATE 8/23/21 ROUTE SR 228
 H.C. NIESE WEATHER FOG COUNTY SENECA
 R.C. RHOADES TEMP. 73° TOWNSHIP ADAMS

DWG BY RHOADES PID PVTRAIN SECTION 16
 T 3 N R 16 E

TYPE MONUMENT P.K./WASHER

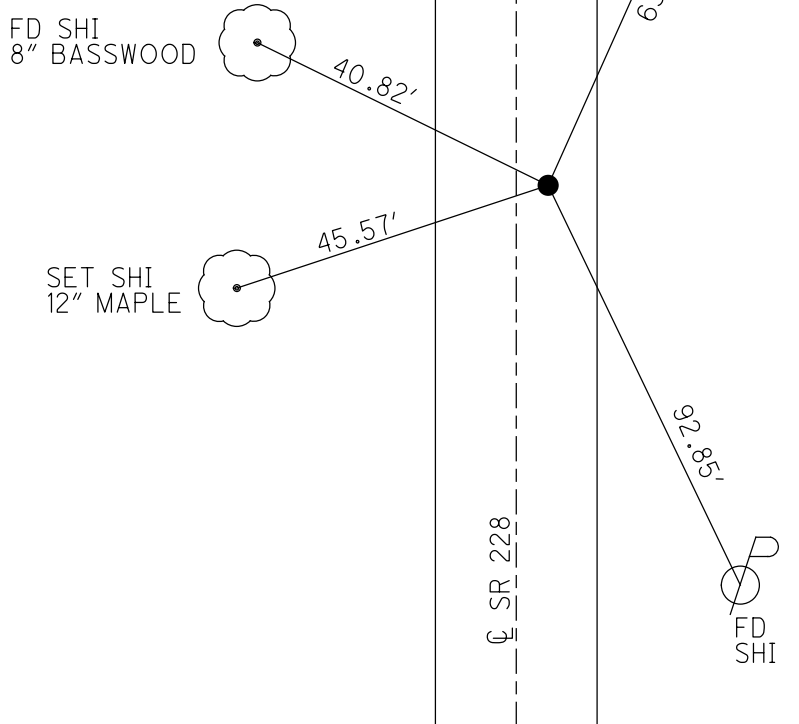
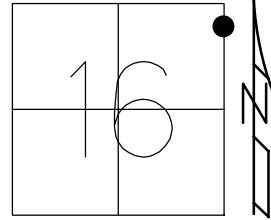
ON SURFACE - ~~BELOW~~ ON

OFFSET Q PAVEMENT 4.2' ~~±~~ : RT
6' TO RT EDGE PAVEMENT

STATION: 49+59

HORZ.DATUM: NAD83 2011 GEOID: NAVD88 2018

GRID: NORTHING: 568792.806 EASTING: 1826784.908



RECORD: P.C.
 STA. 49+59.34
 9/3/96
 SET PK/WASHER
 10/2/96, MB
 FD P.K./WASHER
 9/5/03
 SV128
 7/29/09, KPM
 7/15/10
 FD P.K./WASHER
 REFA5
 8/23/21, TDN
 2/16/22, JFO
 4/14/23, JMR

O.D.O.T. DISTRICT 2 SURVEY OFFICE (USE ONLY)

PERSONNEL _____ REFERENCE NO. 6 SHEET 8 OF 11
 NOTES RHOADES DATE 8/23/21 ROUTE SR 228
 H.C. NIESE WEATHER FOG COUNTY SENECA
 R.C. RHOADES TEMP. 73° TOWNSHIP ADAMS
 DWG BY RHOADES PID PVTRAIN SECTION 16
 T 3 N R 16 E

TYPE MONUMENT D.N.F.

ON SURFACE - BELOW -

OFFSET \odot PAVEMENT 64' \pm : RT

53' RT TO RT EDGE PAVEMENT

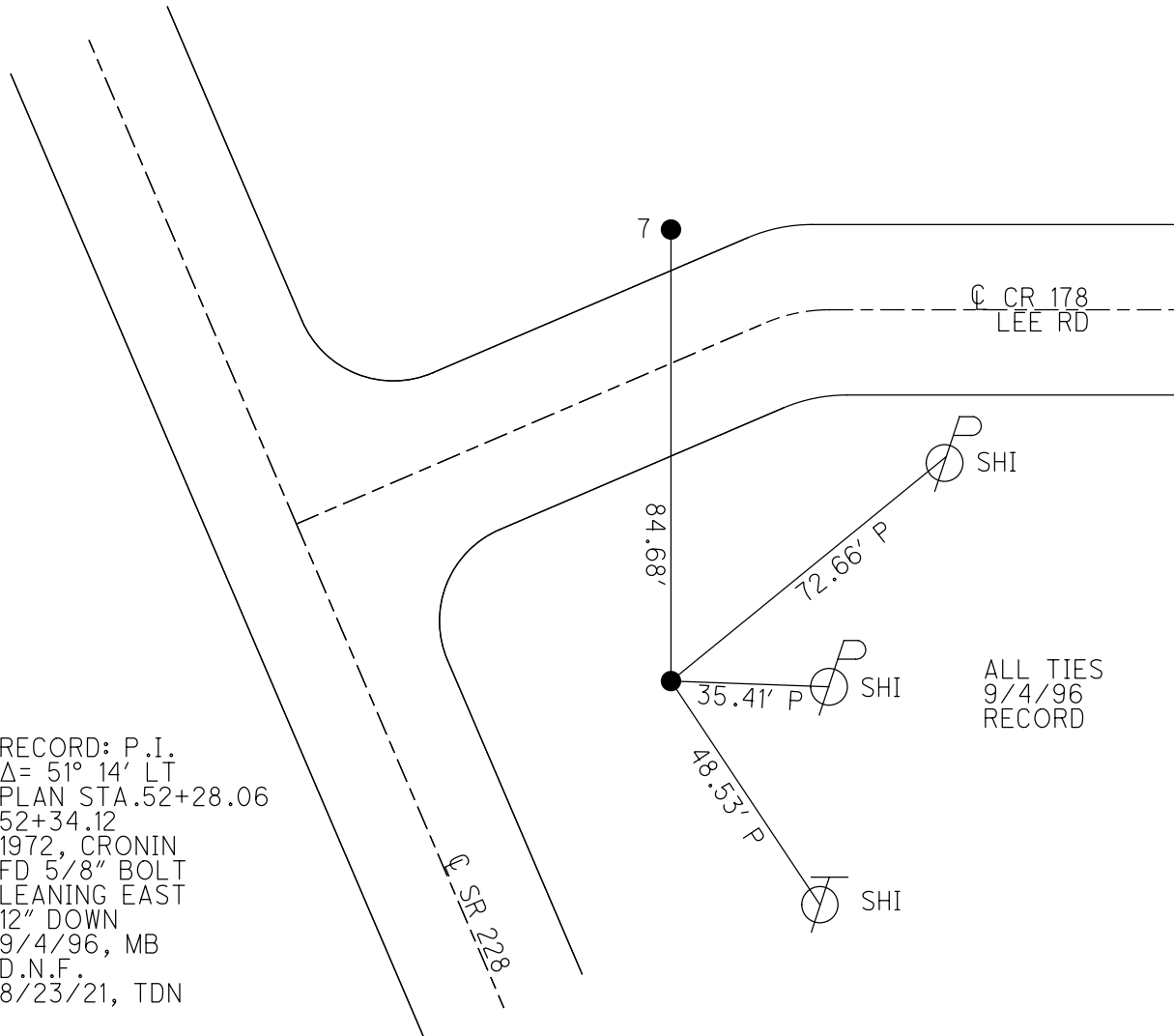
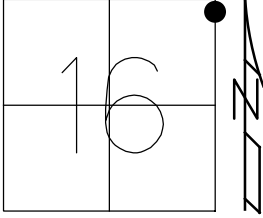
STATION: 52+34.12

HORZ. DATUM: NAD83 2011

GEOID: NAVD88 2018

GRID: NORTHING: 569119.468

EASTING: 1826796.571



RECORD: P.I.
 $\Delta = 51^\circ 14' \text{ LT}$
 PLAN STA. 52+28.06
52+34.12
 1972, CRONIN
 FD 5/8" BOLT
 LEANING EAST
 12" DOWN
 9/4/96, MB
 D.N.F.
 8/23/21, TDN

ALL TIES
 9/4/96
 RECORD

O.D.O.T. DISTRICT 2 SURVEY OFFICE (USE ONLY)

PERSONNEL _____ REFERENCE NO. 7 SHEET 9 OF 11
 NOTES RHOADES DATE 8/23/21 ROUTE SR 228
 H.C. NIESE WEATHER FOG COUNTY SENECA
 R.C. RHOADES TEMP. 73° TOWNSHIP ADAMS
 DWG BY RHOADES PID PVTRAIN SECTION 16
 T 3 N R 16 E

TYPE MONUMENT D.N.F.

ON SURFACE - BELOW -

OFFSET C PAVEMENT 12', CR 178 LT : ~~RT~~

91.1' RT TO RT EDGE PAVEMENT

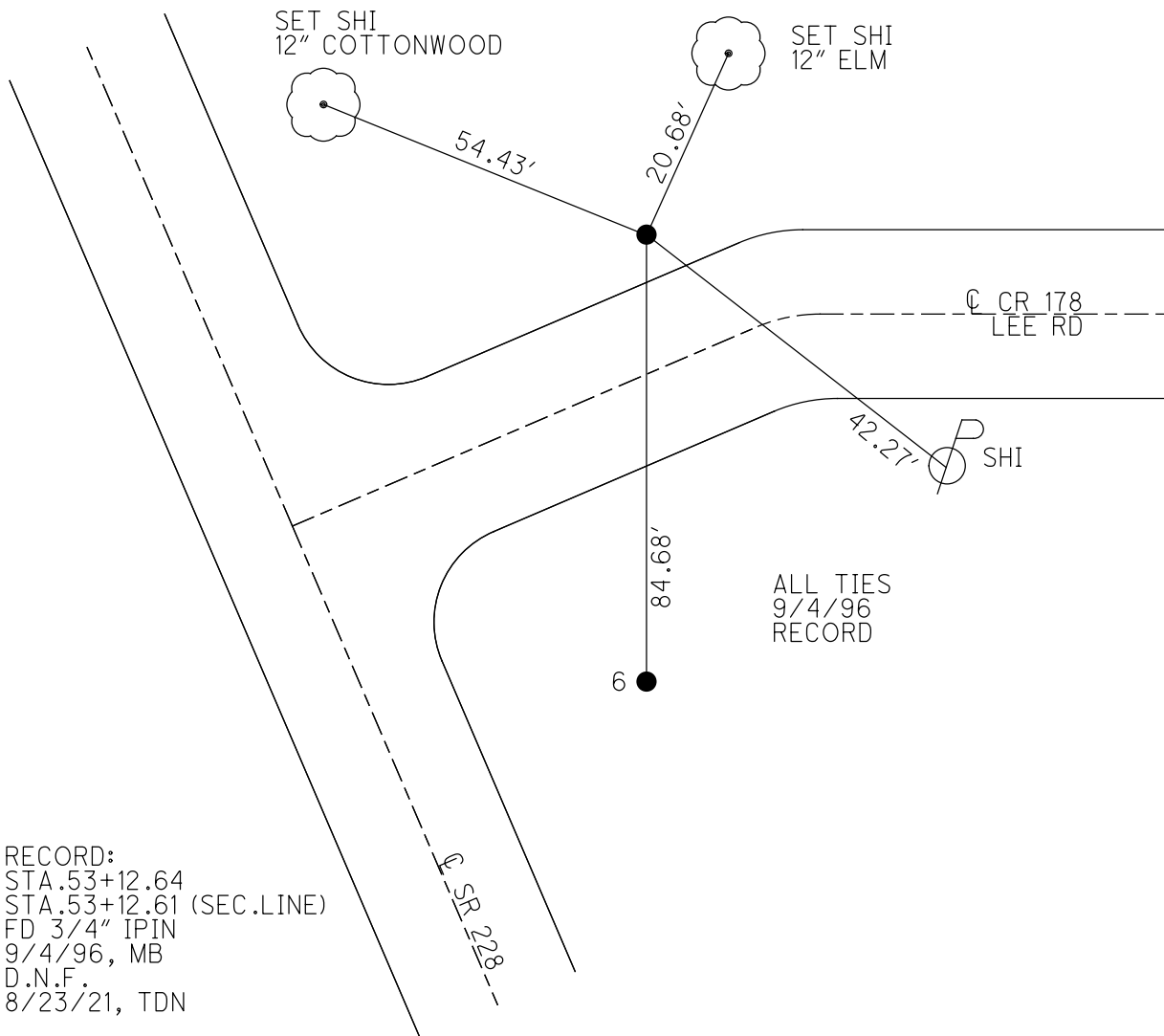
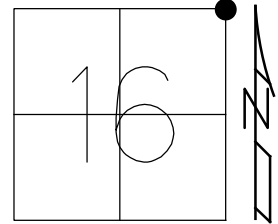
STATION: 52+75

HORZ.DATUM: NAD83 2011

GEOID: NAVD88 2018

GRID: NORTHING: 569158.381

EASTING: 1826797.496



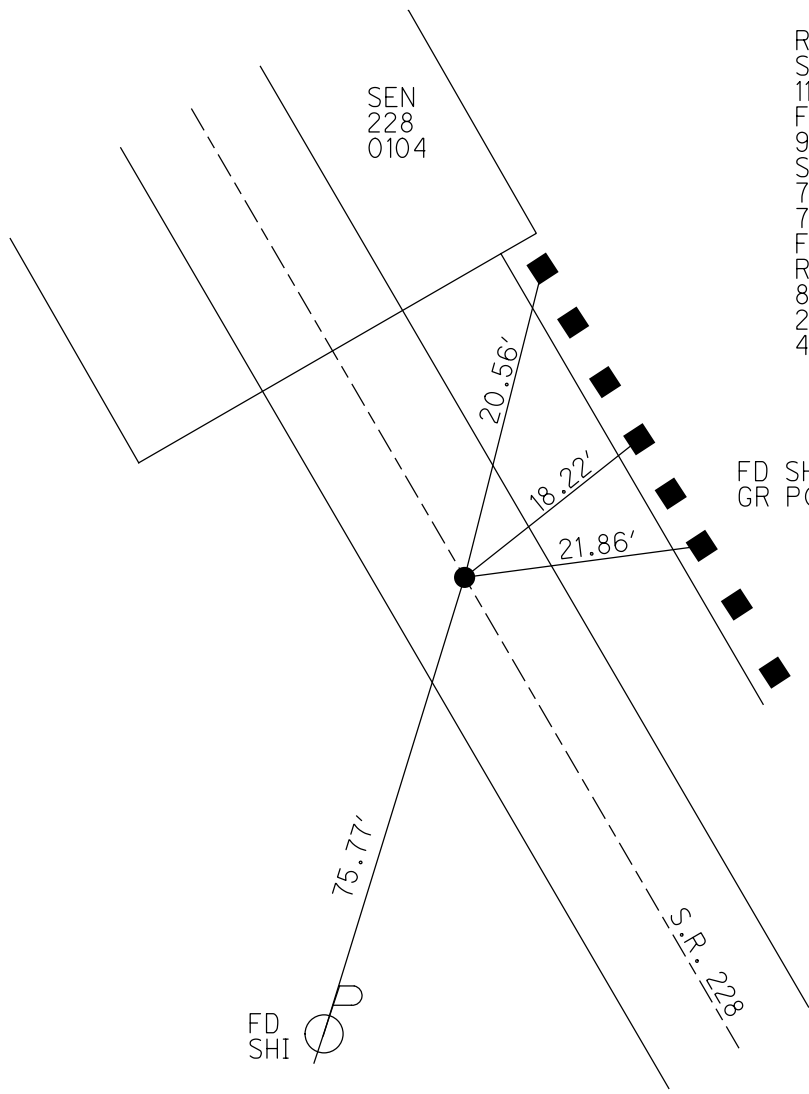
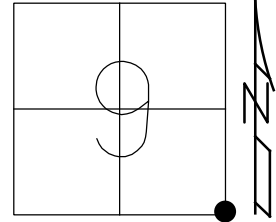
RECORD:
 STA. 53+12.64
 STA. 53+12.61 (SEC. LINE)
 FD 3/4" IPIN
 9/4/96, MB
 D.N.F.
 8/23/21, TDN

O.D.O.T. DISTRICT 2 SURVEY OFFICE (USE ONLY)

PERSONNEL _____ REFERENCE NO. 7 A SHEET 10 OF 11
 NOTES RHOADES DATE 8/23/21 ROUTE SR 228
 H.C. NIESE WEATHER FAIR COUNTY SENECA
 R.C. RHOADES TEMP. 81° TOWNSHIP ADAMS
 DWG BY RHOADES PID PVTRAIN SECTION 9
 T 3 N R 16 E

TYPE MONUMENT P.K./WASHER
 ON SURFACE - ~~BELOW~~ ON
 OFFSET 0.3' ± : RT
9.7' TO RT EDGE PAVEMENT
 STATION: 54+72

HORZ.DATUM: NAD83 2011 GEOID: NAVD88 2018
 GRID: NORTHING: 569240.472 EASTING: 1826572.467



RECORD;
 SET P.K./WASHER
 11/20/98, MRC
 FD P.K./WASHER
 9/5/03
 SV129
 7/29/09, KPM
 7/15/10
 FD P.K./WASHER
 REFA7
 8/23/21, TDN
 2/16/22, JFO
 4/14/23, JMR

FD SHI'S
 GR POSTS

O.D.O.T. DISTRICT 2 SURVEY OFFICE (USE ONLY)

PERSONNEL

REFERENCE NO. 8

SHEET 11 OF 11

NOTES RHOADES

DATE 8/23/21

ROUTE SR 228

H.C. NIESE

WEATHER FAIR

COUNTY SENECA

R.C. RHOADES

TEMP. 81°

TOWNSHIP ADAMS

SECTION 9

DWG BY _____ PID PVTRAIN

T 3 N R 16 E

TYPE MONUMENT LG.R.R.SPIKE

~~ON SURFACE~~ - BELOW 1.5"

OFFSET \odot PAVEMENT 5.5' ~~LT~~ : RT

4.4' TO RT EDGE PAVEMENT

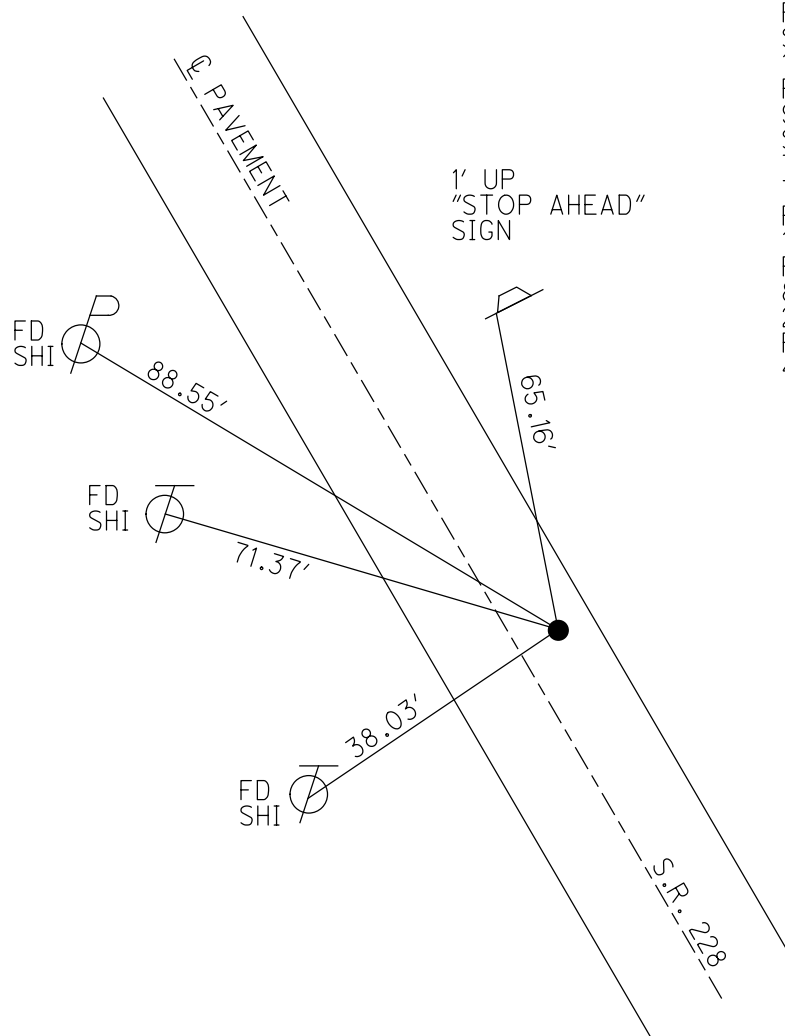
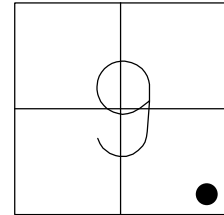
STATION: 62+33

HORZ.DATUM: NAD83 2011

GEOID: NAVD88 2018

GRID: NORTHING: 569717.926

EASTING: 1825982.575



RECORD:
 SET P.K./WASHER
 10/2/96, MB
 FD P.K./WASHER
 9/5/03
 SV116
 7/16/09, KPM
 7/15/10
 FD LG.R.R.SPIKE
 1 1/2" DOWN
 REF8
 8/23/21, TDN
 2/16/22, JFO
 PAINTED OUT
 4/14/23, JMR