

O.D.O.T. DISTRICT 2 SURVEY OFFICE (USE ONLY)

PERSONNEL

REFERENCE NO. 1

SHEET 1 OF 11

NOTES RHOADES DATE 3/14/18
 H.C. O'DONNELL WEATHER CLOUDY
 R.C. RHOADES TEMP. 26°

ROUTE SR 228
 COUNTY SENECA
 TOWNSHIP ADAMS
 SECTION 16

DWG BY MILLER PID 102817

T 3 N R 16 E

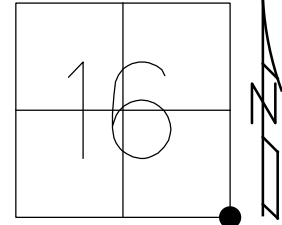
TYPE MONUMENT P.K./WASHER

ON SURFACE - ~~BELOW~~ ON

OFFSET \varnothing PAVEMENT 1' LT : ~~RT~~

- TO - EDGE PAVEMENT

STATION: 0+00



HORZ.DATUM: NAD83(2011)

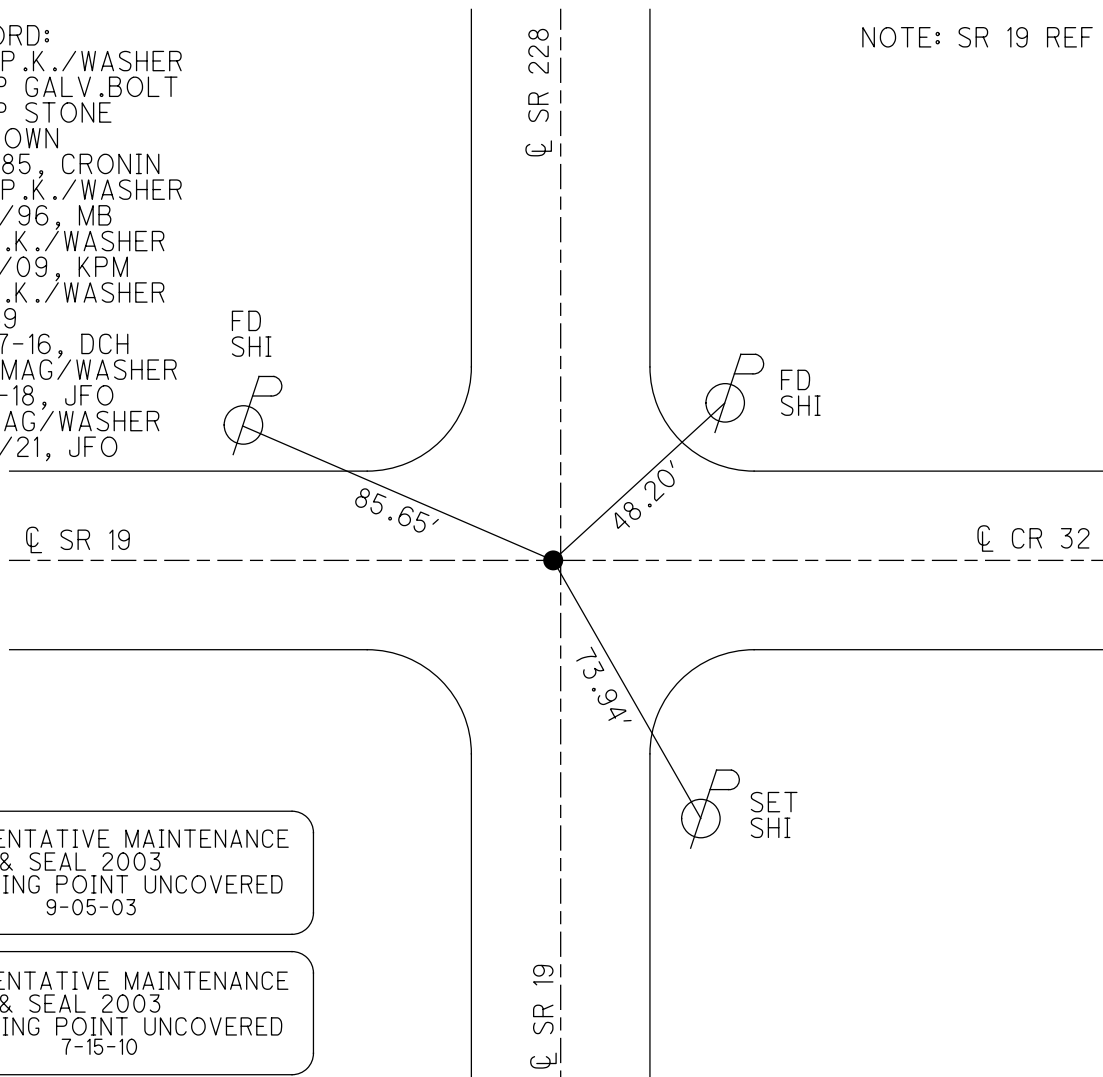
GEOID: NAVD88 2012A

GRID: NORTHING: 563839.456

EASTING: 1826745.385

RECORD:
 SET P.K./WASHER
 ATOP GALV.BOLT
 ATOP STONE
 15" DOWN
 9-4-85, CRONIN
 SET P.K./WASHER
 10/2/96, MB
 FD P.K./WASHER
 7/14/09, KPM
 FD P.K./WASHER
 REF69
 10-27-16, DCH
 SET MAG/WASHER
 10-3-18, JFO
 FD MAG/WASHER
 8/19/21, JFO

NOTE: SR 19 REF 69



PREVENTATIVE MAINTENANCE
 CHIP & SEAL 2003
 EXISTING POINT UNCOVERED
 DATE: 9-05-03

PREVENTATIVE MAINTENANCE
 CHIP & SEAL 2003
 EXISTING POINT UNCOVERED
 DATE: 7-15-10

O.D.O.T. DISTRICT 2 SURVEY OFFICE (USE ONLY)

PERSONNEL

REFERENCE NO. 1

SHEET 1 OF 11

NOTES RHOADES

DATE 3/14/18

ROUTE SR 228

H.C. O'DONNELL

WEATHER CLOUDY

COUNTY SENECA

R.C. RHOADES

TEMP. 26°

TOWNSHIP ADAMS

SECTION 16

DWG BY MILLER PID 102817

T 3 N R 16 E

TYPE MONUMENT P.K./WASHER

ON SURFACE - ~~BELOW~~ ON

OFFSET 0 \varnothing PAVEMENT 1' LT : ~~RT~~

- TO - EDGE PAVEMENT

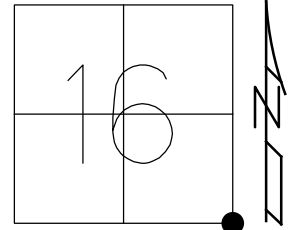
STATION: 0+00

HORIZ.DATUM: NAD83(2011)

GEOID: NAVD88 2012A

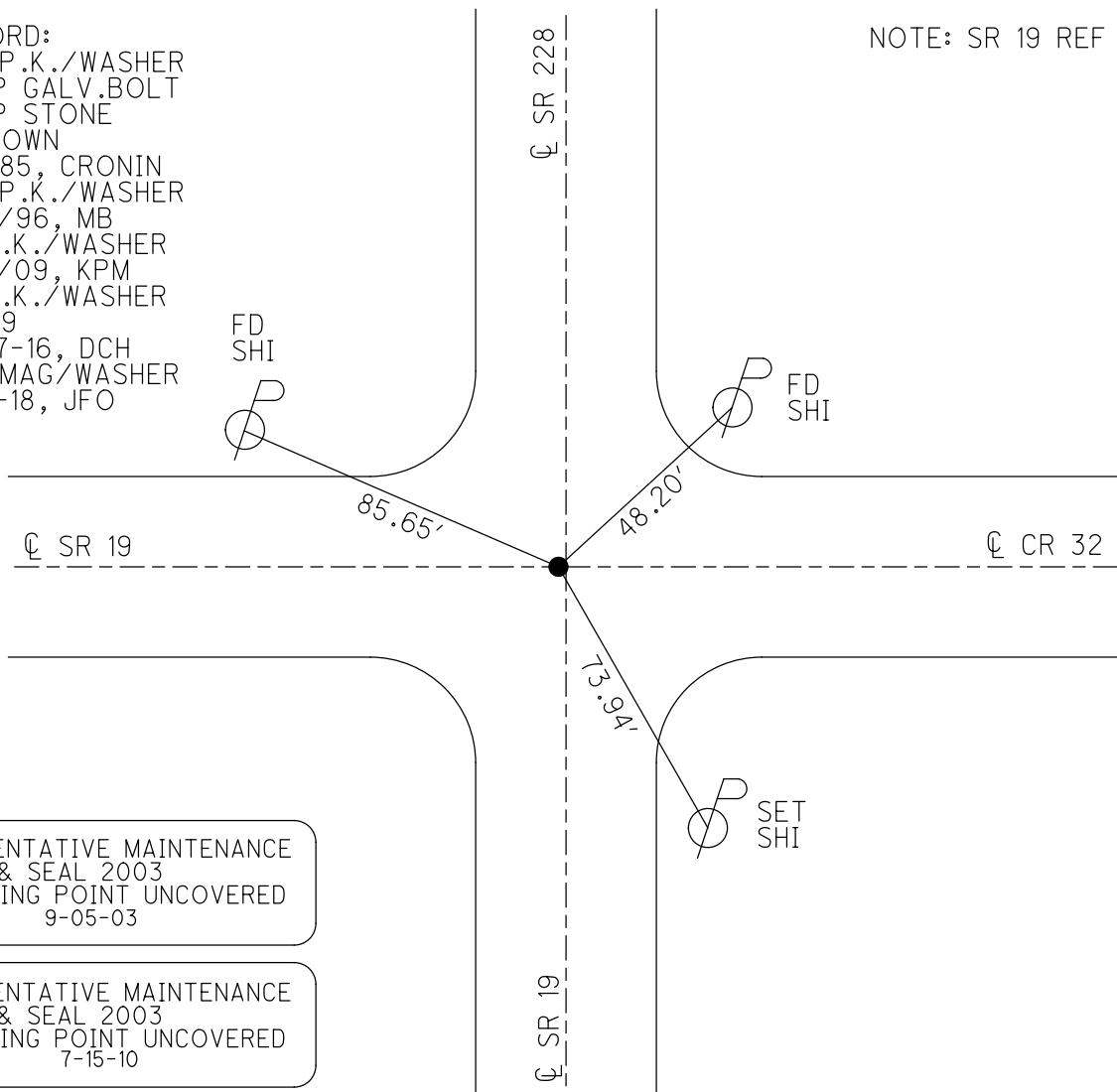
GRID: NORTHING: 563839.456

EASTING: 1826745.385



RECORD:
 SET P.K./WASHER
 ATOP GALV.BOLT
 ATOP STONE
 15" DOWN
 9-4-85, CRONIN
 SET P.K./WASHER
 10/2/96, MB
 FD P.K./WASHER
 7/14/09, KPM
 FD P.K./WASHER
 REF69
 10-27-16, DCH
 SET MAG/WASHER
 10-3-18, JFO

NOTE: SR 19 REF 69



PREVENTATIVE MAINTENANCE
 CHIP & SEAL 2003
 EXISTING POINT UNCOVERED
 DATE: 9-05-03

PREVENTATIVE MAINTENANCE
 CHIP & SEAL 2003
 EXISTING POINT UNCOVERED
 DATE: 7-15-10

O.D.O.T. DISTRICT 2 SURVEY OFFICE (USE ONLY)

PERSONNEL

REFERENCE NO. 1

SHEET 1 OF 11

NOTES MOSER

DATE 7-14-09

ROUTE 228

H.C. BARNHISEL

WEATHER SUNNY

COUNTY SENECA

R.C. MOSER

TEMP. +80°

TOWNSHIP ADAMS

SECTION 16

T 3 N R 16 E

TYPE MONUMENT PK/WASHER

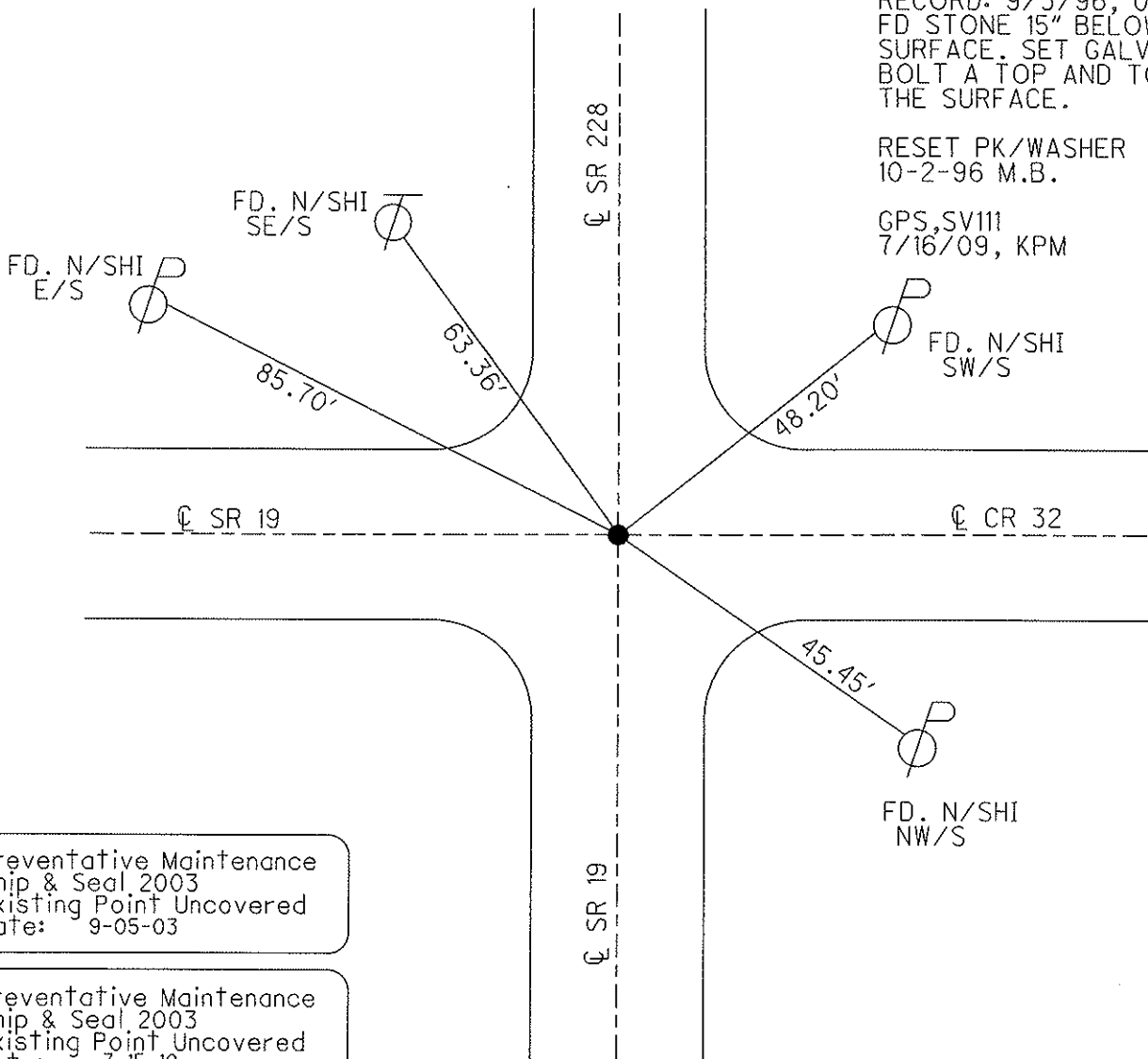
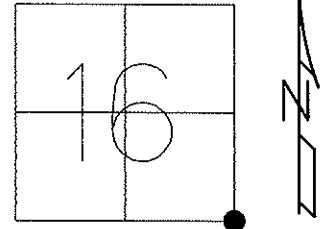
ON SURFACE - ~~BELOW~~ ON

LEFT - ~~C PAV'T~~ = RIGHT 1.5'

 TO EDGE PAVEMENT

S.L.M. 0+00, (801+36 SR 19)

Grid: Northing: Easting:



RECORD: 9/3/96, 0+00
FD STONE 15" BELOW
SURFACE. SET GALVANIZED
BOLT A TOP AND TO
THE SURFACE.

RESET PK/WASHER
10-2-96 M.B.

GPS, SV111
7/16/09, KPM

Preventative Maintenance
Chip & Seal 2003
Existing Point Uncovered
Date: 9-05-03

Preventative Maintenance
Chip & Seal 2003
Existing Point Uncovered
Date: 7-15-10

Chip Seal 2003

O.D.O.T. DISTRICT 2 SURVEY OFFICE

PERSONNEL

REFERENCE NO. 1

^{SE 19} 69

SHEET 1 OF 9

NOTES BARNHISEL RC

H.C. CORDES

R.C. _____

DATE 9-3-96

WEATHER SUNNY

TEMP. +85°

ROUTE 228

COUNTY Seneca

TOWNSHIP ADAMS

SECTION 16

T 3 N R 16 E

TYPE MONUMENT PK & WASHER

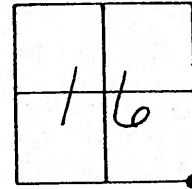
ON SURFACE - ~~NO~~ yes

LEFT- & PAVT. - ~~NO~~ 1.5

TO EDGE PAVEMENT

S.L.M. 0+00

801+36 SR 19

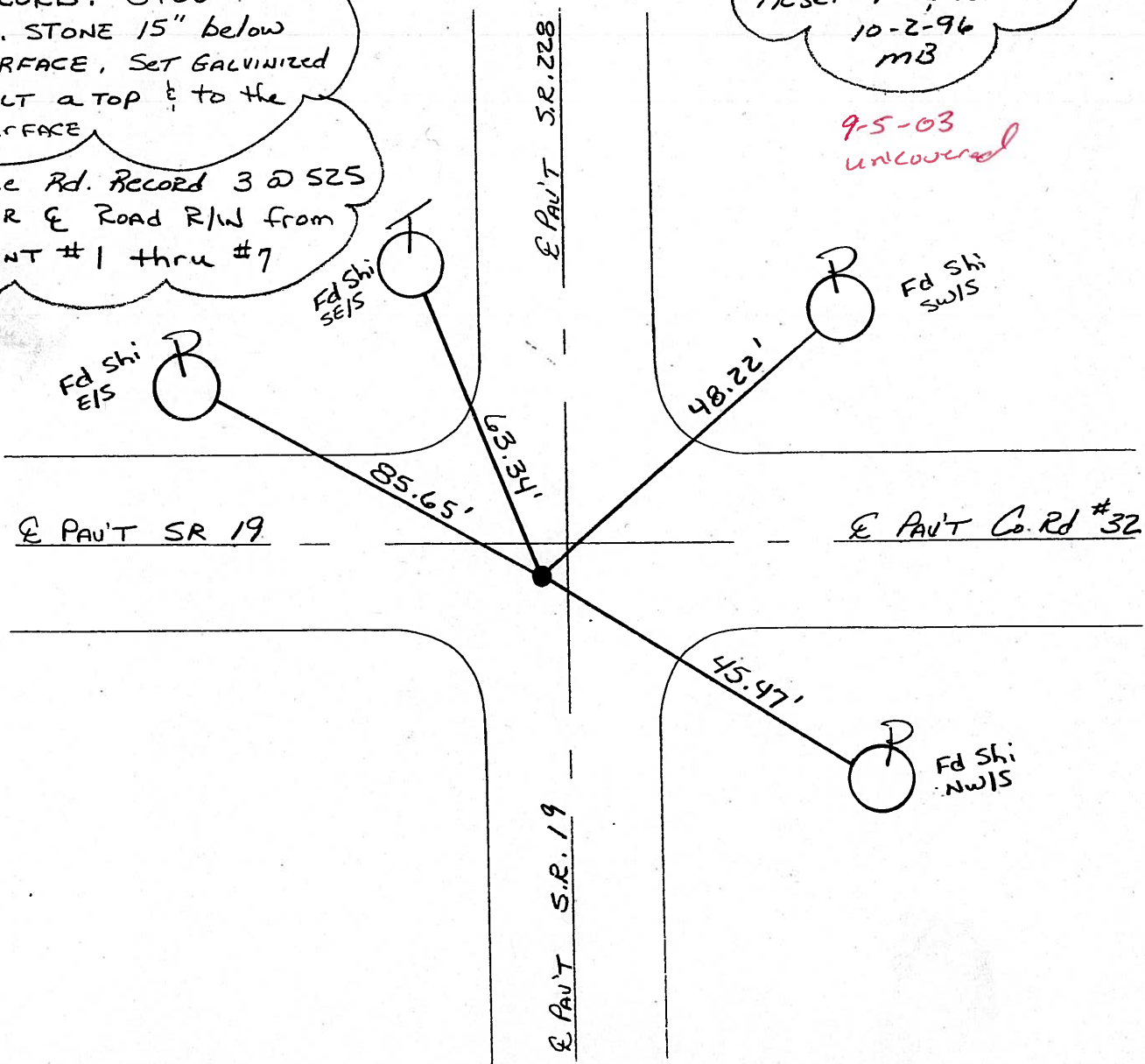


RECORD: 0+00
FD. STONE 15" below
SURFACE, SET GALVANIZED
BOLT a TOP & to the
SURFACE

See Rd. Record 3 @ 525
FOR & Road R/W from
POINT #1 thru #7

RESET PK & WASHER
10-2-96
MB

9-5-03
uncovered



O.D.O.T. DISTRICT 2 SURVEY OFFICE

PERSONNEL _____

REFERENCE NO. 1 ^{# 5219} ₆₉

SHEET 1 OF 9

NOTES BARNHISEL RC

H.C. CORDES

R.C. _____

DATE 9-3-96

WEATHER SUNNY

TEMP. +85°

ROUTE 228

COUNTY Seneca

TOWNSHIP ADAMS

SECTION 16

T 3 N R 16 E

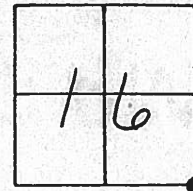
TYPE MONUMENT PK & WASHER

ON SURFACE - ~~NO~~ YES

LEFT- & PAV'T. - ~~RIGHT~~ 1.5

TO EDGE PAVEMENT

S.L.M. 0+00 801+36 SR 19

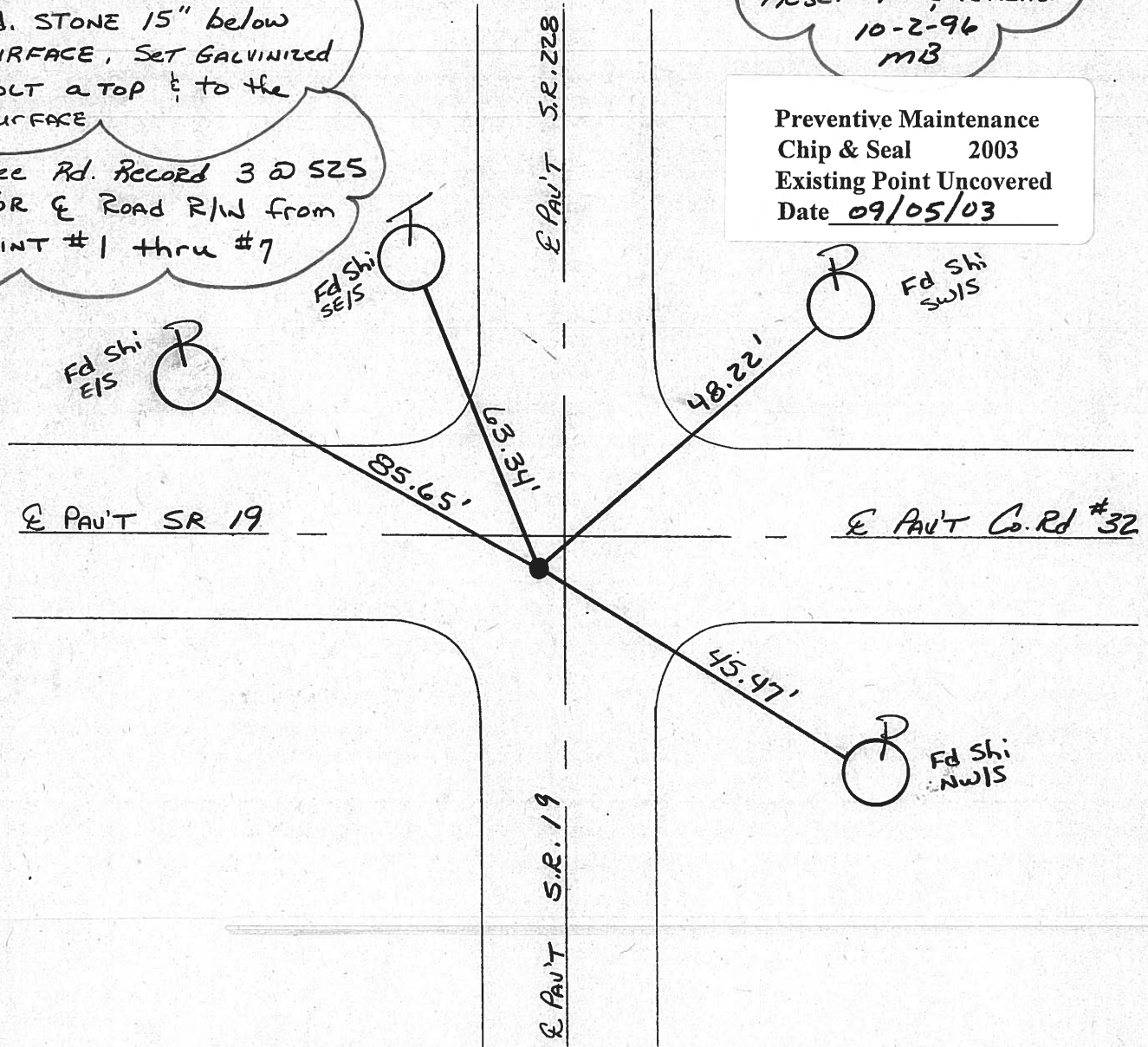


RECORD: 0+00
 Fd. STONE 15" below
 SURFACE, SET GALVANIZED
 DOLT a TOP & TO the
 SURFACE

See Rd. Record 3 @ 525
 FOR & Road R/W from
 POINT #1 thru #7

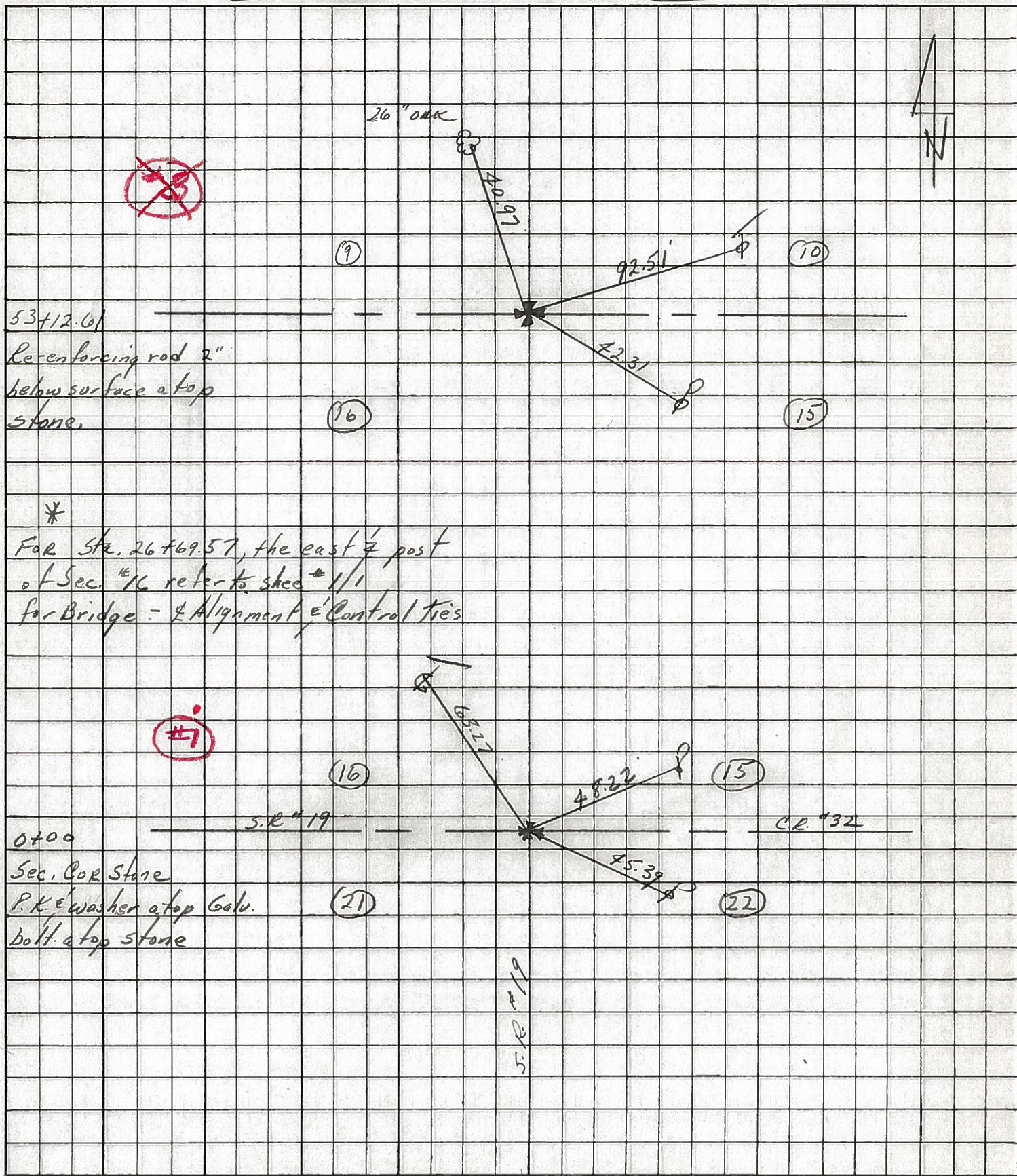
RESET PK & WASHER
 10-2-96
 MB

Preventive Maintenance
 Chip & Seal 2003
 Existing Point Uncovered
 Date 09/05/03



PERSONNEL	TITLE	PERSONNEL	TITLE	PERSONNEL	TITLE	PERSONNEL	TITLE
Cranin				Seneca			
Ripple				S. R. #228			WEATHER sunny-windy
Geymer				SEC. Bridge-S.L.M. 0.50			TEMP. 58°
Barbour							

DESCRIPTION Control Point Ties LEFT CENTER LINE RIGHT JOB NO.



7

3

17

PERSONNEL TITLE PERSONNEL TITLE

Ash
Cronin
Ringle
Anderson

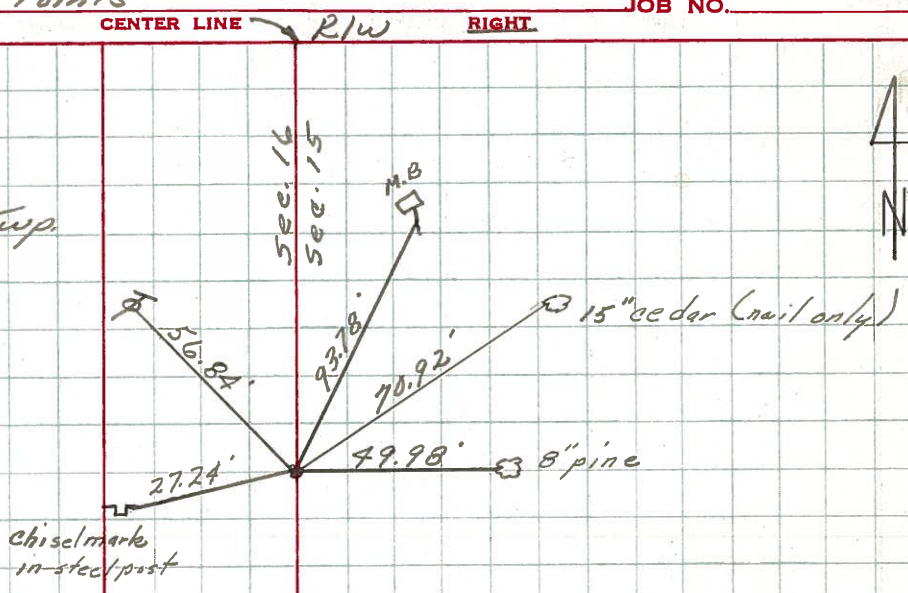
COUNTY Seneca DATE 11/3/72
S. R. # 228 WEATHER Sunny
SEC. K' I.C.H #485 TEMP. 50°

DESCRIPTION Ties for Control Points JOB NO.

2

P.O.T
18477.40
Set R.R spike
#2

Adams Twp.



1

Sec. Corner.
0+00
Fd. stone 15" below surface. Set galvanized bolt at top, 4' to the surface
#1
See Rd. Record 3 @ 525 For R Road R/W from Point #1 to Point #7 incl.

Adams Twp.

