

O.D.O.T. DISTRICT 2 SURVEY OFFICE (USE ONLY)

PERSONNEL _____ REFERENCE NO. 2 SHEET 2 OF 11
 NOTES RHOADES DATE 8/23/21 ROUTE SR 228
 H.C. NIESE WEATHER FOG COUNTY SENECA
 R.C. RHOADES TEMP. 73° TOWNSHIP ADAMS
 DWG BY RHOADES PID PVTRAIN SECTION 16
 T 3 N R 16 E

TYPE MONUMENT P.K./WASHER

ON SURFACE - ~~BELOW~~ ON _____

OFFSET C PAVEMENT 1.5' LT : ~~RT~~

8.5' TO LT EDGE PAVEMENT

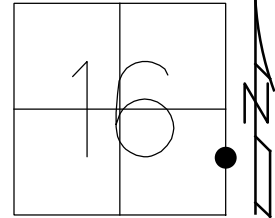
STATION: 18+79

HORZ.DATUM: NAD83 2011

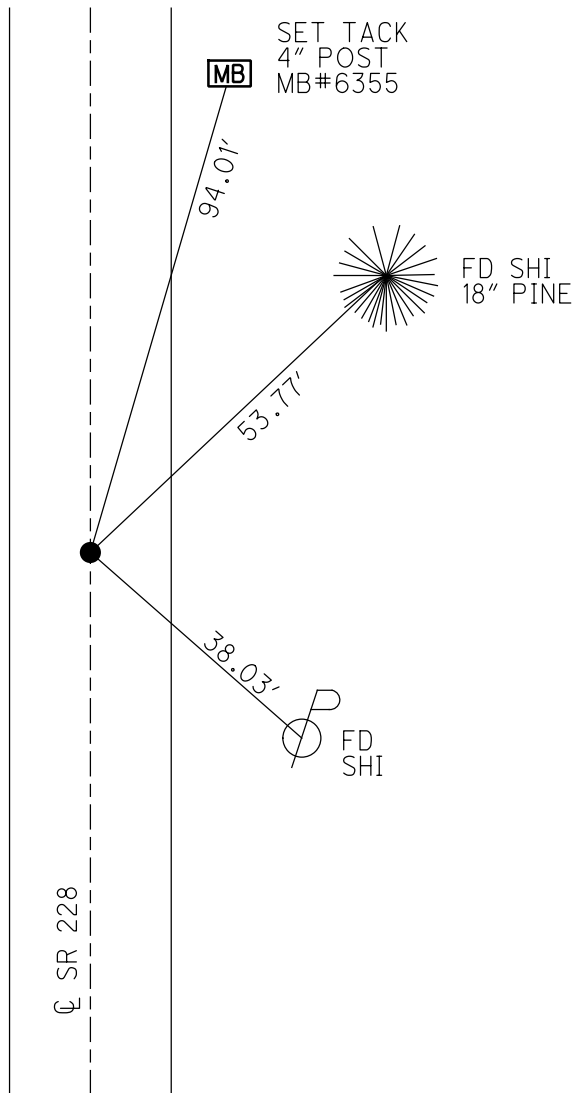
GEOID: NAVD88 2018

GRID: NORTHING: 565717.111

EASTING: 1826760.531



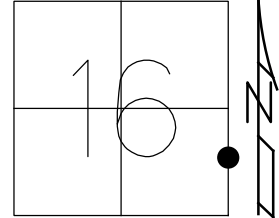
RECORD: P.O.T.
 STA.18+77.40
 SET R.R.SPIKE
 SET P.K./WASHER
 10-2-96, MB
 FD P.K./WASHER
 9/5/03
 FD P.K./WASHER
 SV112
 7/16/09, KPM
 7/15/10
 FD P.K./WASHER
 REF2
 8/23/21, TDN
 FD P.K./WASHER
 2/16/22, JFO
 4/14/23, JMR



O.D.O.T. DISTRICT 2 SURVEY OFFICE (USE ONLY)

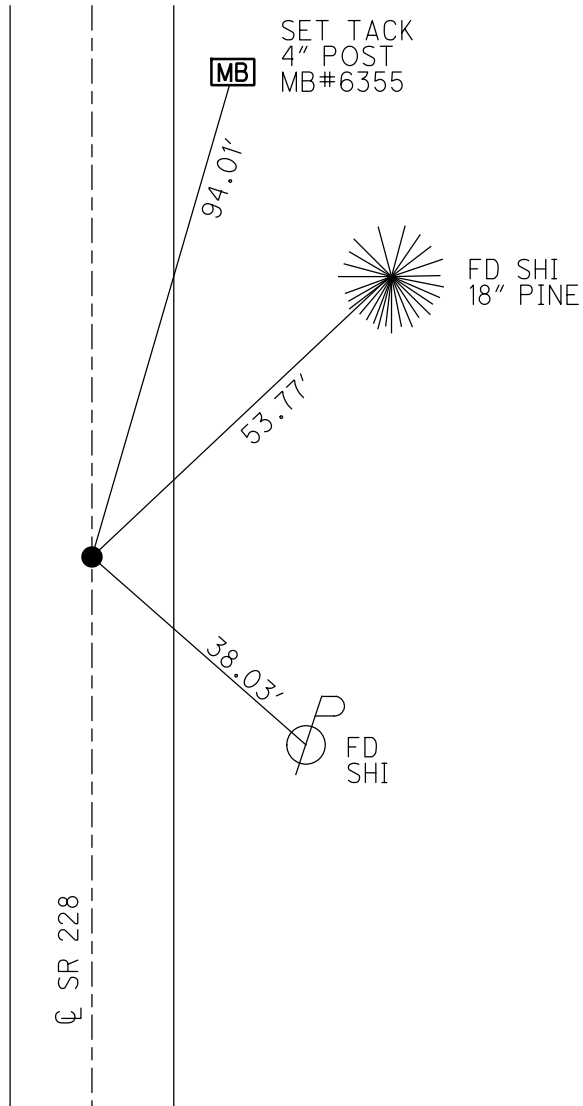
PERSONNEL _____ REFERENCE NO. 2 SHEET 2 OF 11
 NOTES RHOADES DATE 8/23/21 ROUTE SR 228
 H.C. NIESE WEATHER FOG COUNTY SENECA
 R.C. RHOADES TEMP. 73° TOWNSHIP ADAMS
 SECTION 16
 DWG BY RHOADES PID PVTRAIN T 3 N R 16 E

TYPE MONUMENT P.K./WASHER
 ON SURFACE - ~~BELOW~~ ON
 OFFSET Q PAVEMENT 1.5' LT : ~~RT~~
8.5' TO LT EDGE PAVEMENT
 STATION: 18+79



HORZ.DATUM: NAD83 2011 GEOID: NAVD88 2018
 GRID: NORTHING: 565717.111 EASTING: 1826760.531

RECORD: P.O.T.
 STA. 18+77.40
 SET R.R.SPIKE
 SET P.K./WASHER
 10-2-96, MB
 FD P.K./WASHER
 9/5/03
 FD P.K./WASHER
 SV112
 7/16/09, KPM
 7/15/10
 FD P.K./WASHER
 REF2
 8/23/21, TDN
 FD P.K./WASHER
 2/16/22, JFO

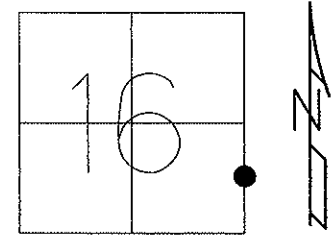


O.D.O.T. DISTRICT 2 SURVEY OFFICE (USE ONLY)

PERSONNEL _____ REFERENCE NO. 2 SHEET 2 OF 11
 NOTES MOSER DATE 7-14-09 ROUTE 228
 H.C. BARNHEISEL WEATHER SUNNY COUNTY SENECA
 R.C. MOSER TEMP. +80° TOWNSHIP ADAMS
 _____ SECTION 16
 _____ T 3 N R 16 E

TYPE MONUMENT _____ PK/WASHER _____
 ON SURFACE - ~~BELOW~~ ON SURFACE _____
 LEFT - ~~C PAV'T~~ - RIGHT 1.5' LEFT
8.5' TO LT. EDGE PAVEMENT
 S.L.M. 18+79

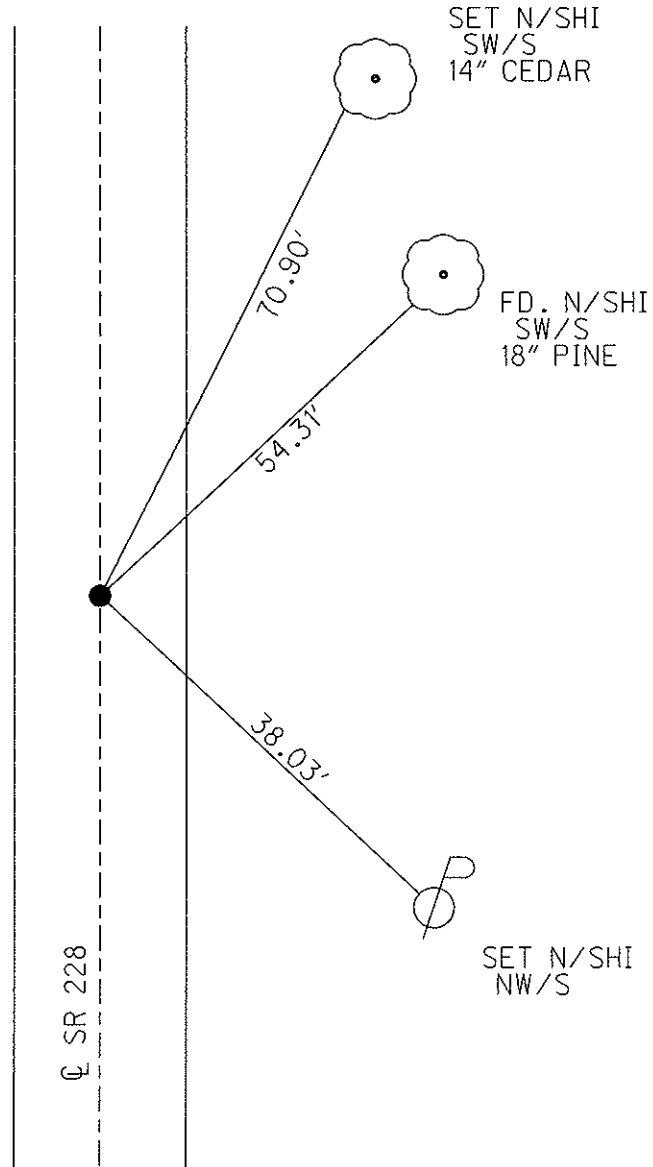
Grid: Northing: _____ Easting: _____



RECORD: 9/3/96
 P.O.T. 18+77.40
 SET R.R.SPIKE

RESET PK/WASHER
 10-2-96 M.B.

GPS, SV112
 7/16/09, KPM



Preventative Maintenance
 Chip & Seal 2003
 Existing Point Uncovered
 Date: 9-05-03

Preventative Maintenance
 Chip & Seal 2003
 Existing Point Uncovered
 Date: 7-15-10

O.D.O.T. DISTRICT 2 SURVEY OFFICE

PERSONNEL _____ REFERENCE NO. 2 SHEET 2 OF 1

NOTES BARNHISEL RC Cuff 5/21/03

H.C. CORDES JOP DATE 9-3-96 ROUTE 228

R.C. Glen WEATHER SUNNY COUNTY SENECA

mm TEMP. +85° 60° TOWNSHIP ADAMS

SECTION 16

T.3 N.R. 16 E

TYPE MONUMENT Lg RR SPK

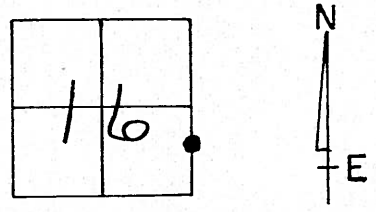
~~GA SURFACE~~ - BELOW 2"

LEFT- <math>C</math> PAV'T. - ~~RIGHT~~ 1.5

8.5 TO CT EDGE PAVEMENT

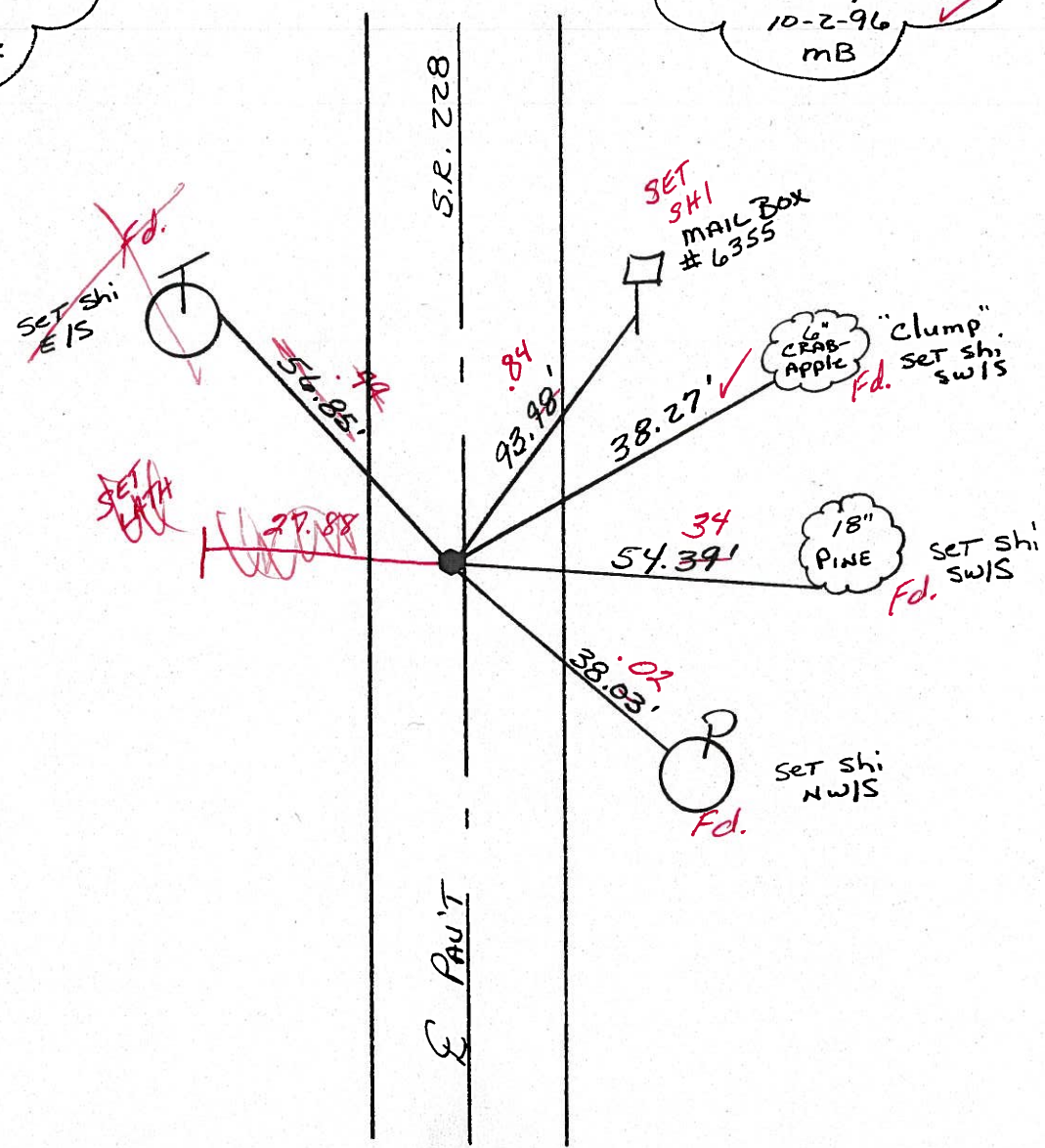
S.L.M. 18+79

9-5-03
UNCOVERED



RECORD: P.O.T.
18+77.40
SET RR SPK

RESET PK' WASHER
10-2-96
mB



O.D.O.T. DISTRICT 2 SURVEY OFFICE

PERSONNEL _____

REFERENCE NO. 2

SHEET 2 OF 9

NOTES BARNHISEL RC

H.C. CORDES

R.C. _____

DATE 9-3-96

WEATHER SUNNY

TEMP. +85°

ROUTE 228

COUNTY SENECA

TOWNSHIP ADAMS

SECTION 16

T. 3 N. R. 16 E

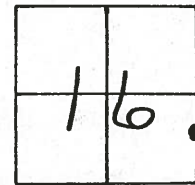
TYPE MONUMENT Lg RR SPK

~~ON SURFACE~~ - BELOW 2"

LEFT-~~E~~ PAV'T. - ~~RIGHT~~ 1.5

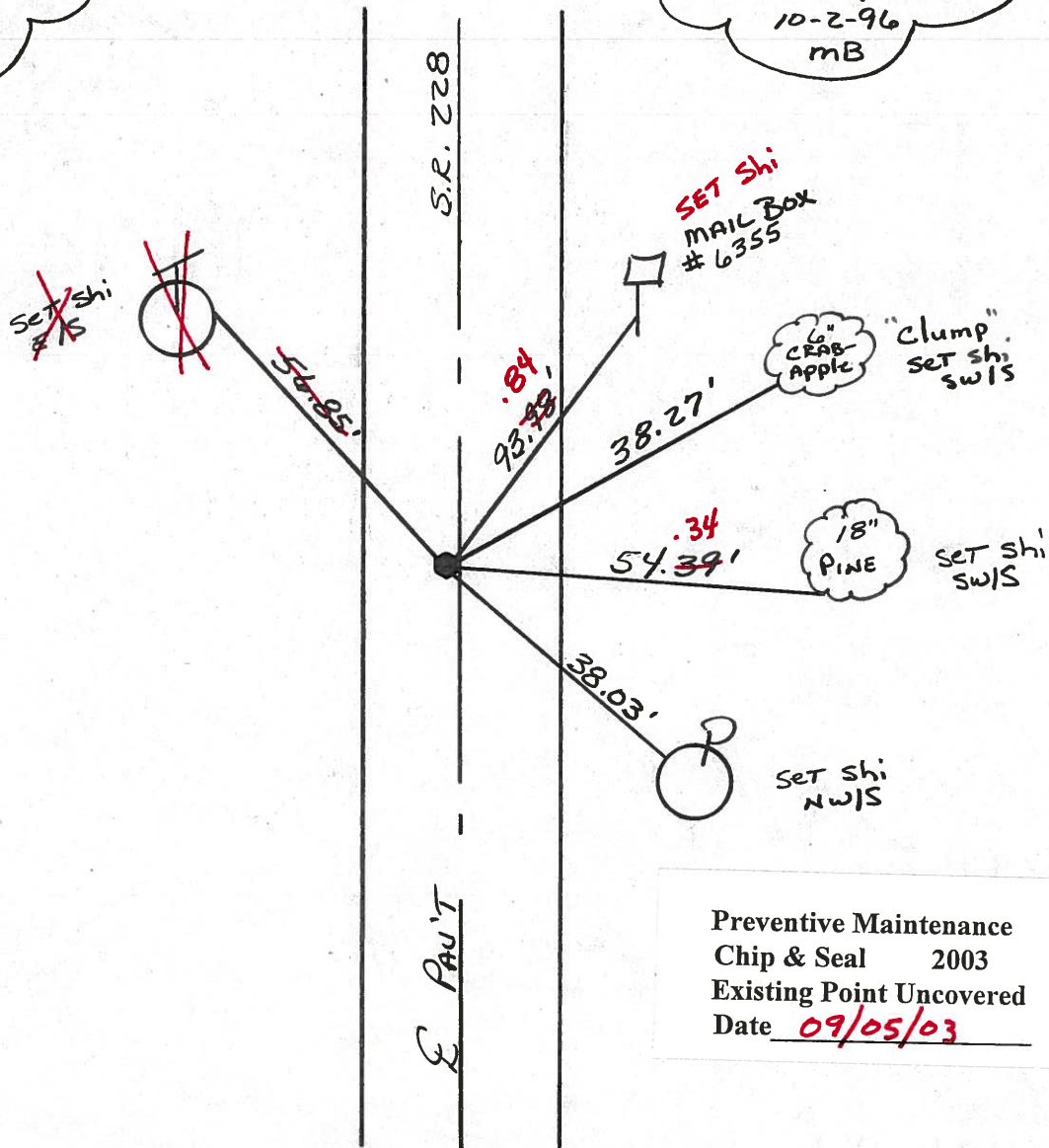
8.5 TO LT EDGE PAVEMENT

S.L.M. 18+79



Record: P.O.T.
18+77.40
Set RR SPK

Reset PK & WASHER
10-2-96
MB



Preventive Maintenance
Chip & Seal 2003
Existing Point Uncovered
Date 09/05/03

PERSONNEL TITLE PERSONNEL TITLE

Ash
Cromin
~~Ruppel~~
Anderson

COUNTY Seneca

DATE 11/3/72

S. R. #228

WEATHER Sunny

SEC. K I.C.H #485

TEMP 50°

DESCRIPTION Ties for Control Points

JOB NO.

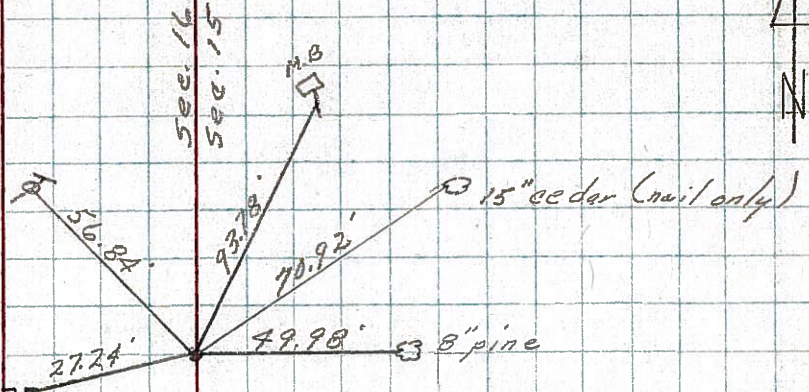
LEFT CENTER LINE R/W RIGHT

Adams Twp.

②

P.O.T
18+77.40
Set R.R. spike
#2

chisel marks
in steel post



①

Sec. Corner.
0+00
Fdi. stone 15" below
surface. Set galvanized
bolt atop, to the
surface
#1
See Rd. Record 3 @ 525
For R Road R/W from
Point #1 to Point #7 incl.

Adams Twp.

conc
mon

Tied 6/19/72
Temp 88°

