

O.D.O.T. DISTRICT 2 SURVEY OFFICE (USE ONLY)

PERSONNEL _____ REFERENCE NO. 4 SHEET 4 OF 11
 NOTES RHOADES DATE 8/23/21 ROUTE SR 228
 H.C. NIESE WEATHER FOG COUNTY SENECA
 R.C. RHOADES TEMP. 73° TOWNSHIP ADAMS
 SECTION 16
 DWG BY RHOADES PID PVTRAIN T 3 N R 16 E

TYPE MONUMENT P.K./WASHER

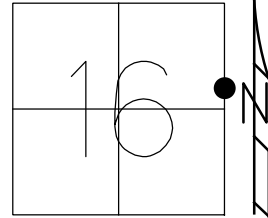
ON SURFACE - ~~BELOW~~ ON

OFFSET ☉ PAVEMENT 3.5' LT : ~~RT~~
6.3' TO LT EDGE PAVEMENT

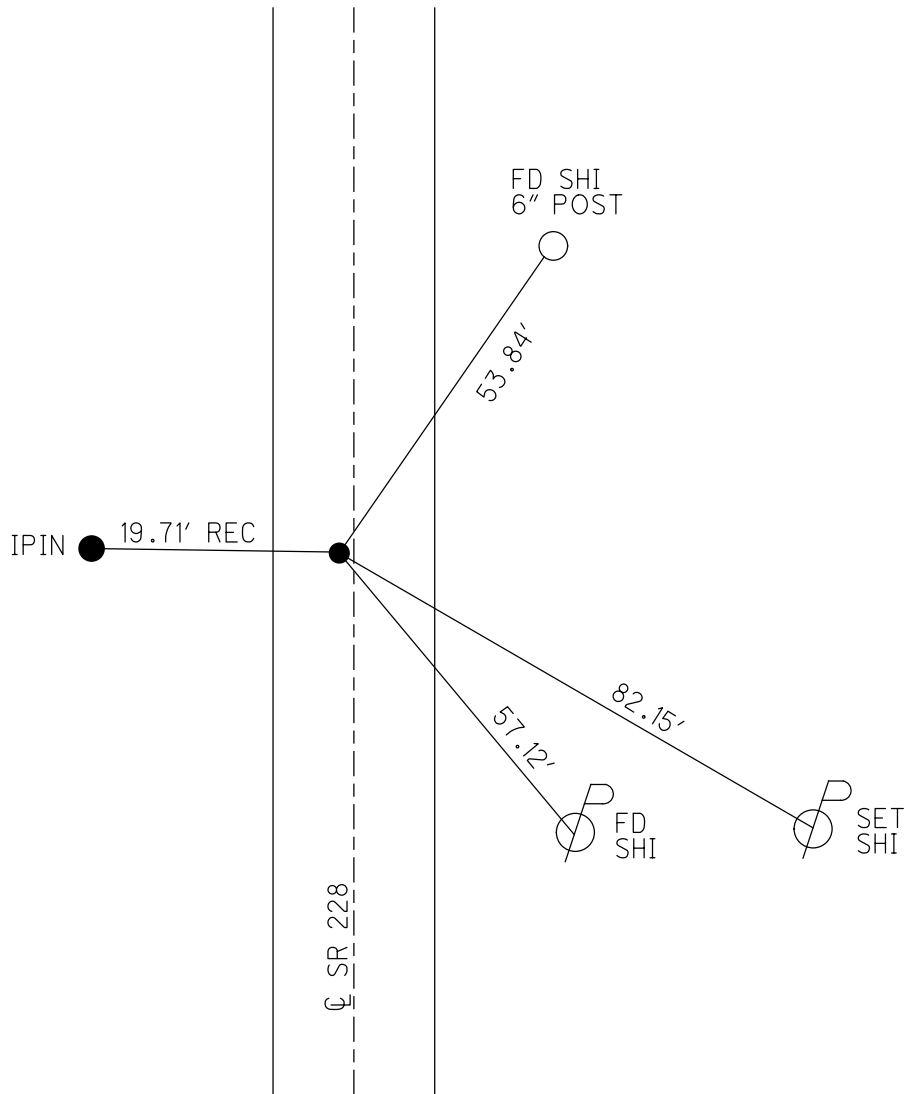
STATION: 31+50

HORZ.DATUM: NAD83 2011 GEOID: NAVD88 2018

GRID: NORTHING: 566991.577 EASTING: 1826772.023



RECORD: P.O.T.
 STA. 31+52.06
 SET R.R. SPIKE
 SET P.K./WASHER
 10-2-96, MB
 FD P.K./WASHER
 9/5/03
 FD P.K./WASHER
 SV113
 7/16/09, KPM
 7/15/10
 FD P.K./WASHER
 REF4
 8/23/21, TDN
 FD P.K./WASHER
 2/16/22, JFO
 FD P.K. SHANK
 4/14/23, JMR



O.D.O.T. DISTRICT 2 SURVEY OFFICE (USE ONLY)

PERSONNEL

REFERENCE NO. 4

SHEET 4 OF 11

NOTES RHOADES DATE 8/23/21
 H.C. NIESE WEATHER FOG
 R.C. RHOADES TEMP. 73°

ROUTE SR 228
 COUNTY SENECA
 TOWNSHIP ADAMS
 SECTION 16
 T 3 N R 16 E

DWG BY RHOADES PID PVTRAIN

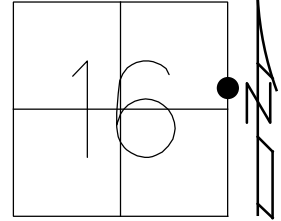
TYPE MONUMENT P.K./WASHER

ON SURFACE - ~~BELOW~~ ON

OFFSET CL PAVEMENT 3.5' LT : ~~RT~~

6.3' TO LT EDGE PAVEMENT

STATION: 31+50



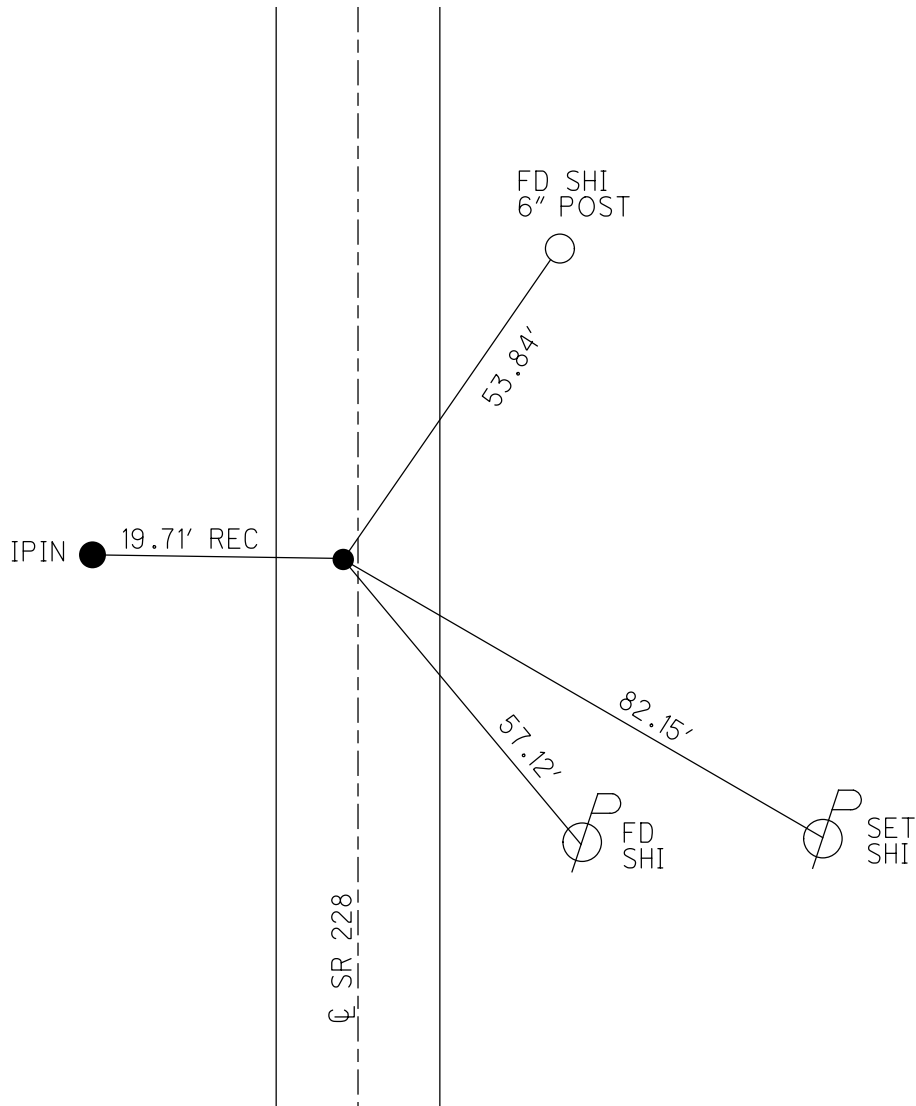
HORIZ.DATUM: NAD83 2011

GEOID: NAVD88 2018

GRID: NORTHING: 566991.577

EASTING: 1826772.023

RECORD: P.O.T.
 STA. 31+52.06
 SET R.R. SPIKE
 SET P.K./WASHER
 10-2-96, MB
 FD P.K./WASHER
 9/5/03
 FD P.K./WASHER
 SV113
 7/16/09, KPM
 7/15/10
 FD P.K./WASHER
 REF4
 8/23/21, TDN
 FD P.K./WASHER
 2/16/22, JFO



O.D.O.T. DISTRICT 2 SURVEY OFFICE (USE ONLY)

PERSONNEL

REFERENCE NO. 4

SHEET 4 OF 11

NOTES MOSER

DATE 7-14-09

ROUTE 228

H.C. BARNHISEL

WEATHER SUNNY

COUNTY SENECA

R.C. MOSER

TEMP. +80°

TOWNSHIP ADAMS

SECTION 16

T 3 N R 16 E

TYPE MONUMENT PK/WASHER

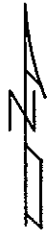
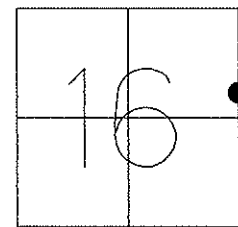
ON SURFACE - ~~BELOW~~ ON SURFACE

LEFT - ~~C PAV'T~~ - ~~RIGHT~~ 3.5' LEFT

6.3' TO LT. EDGE PAVEMENT

S.L.M. 31+50

Grid: Northing: _____ Easting: _____



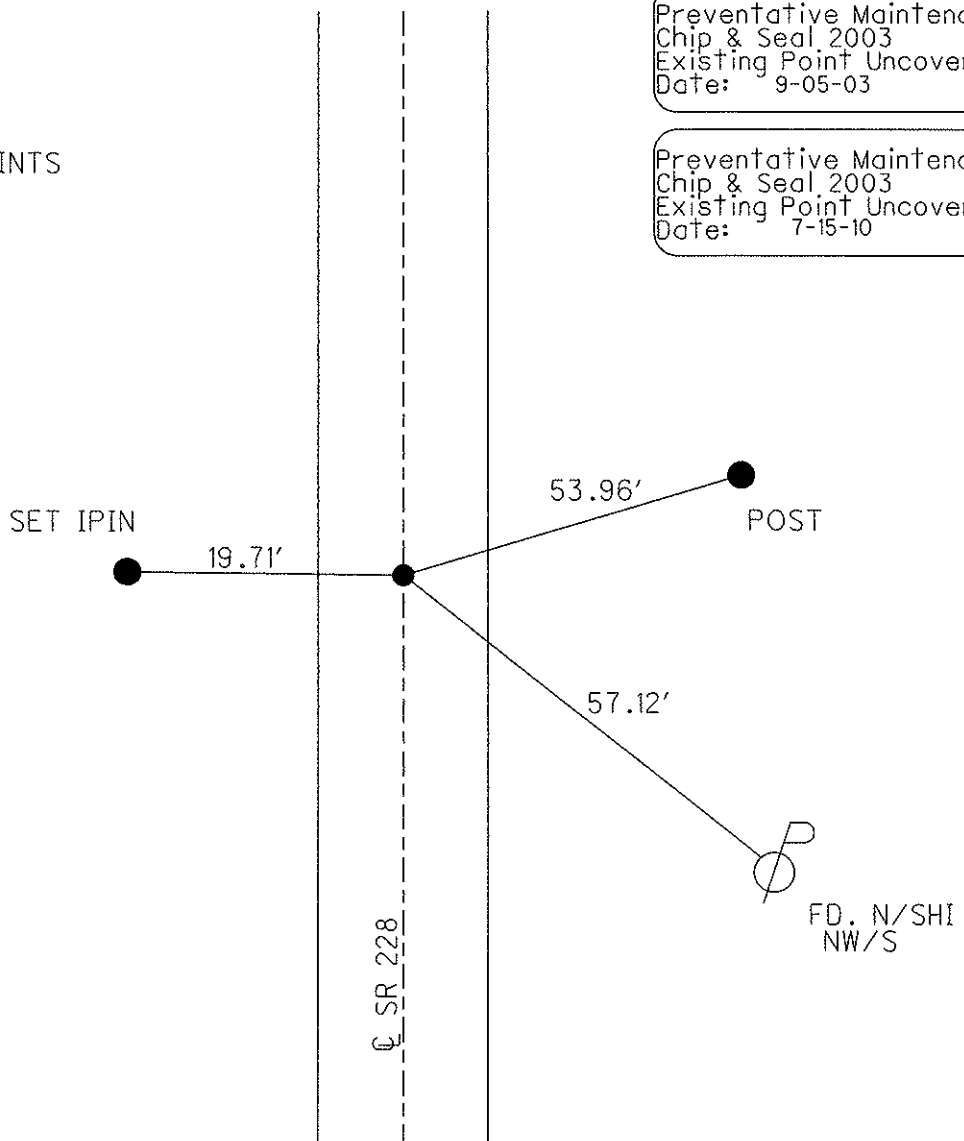
RECORD: 9/3/96
 P.O.T. 31+52.06
 SET R.R.SPIKE'S
 ON SECTION LINE
 AND C SURVEY
 1.64' BETWEEN POINTS

RESET PK/WASHER
 10-2-96 M.B.

GPS, SV113
 7/16/09, KPM

Preventative Maintenance
 Chip & Seal 2003
 Existing Point Uncovered
 Date: 9-05-03

Preventative Maintenance
 Chip & Seal 2003
 Existing Point Uncovered
 Date: 7-15-10



O.D.O.T. DISTRICT 2 SURVEY OFFICE

PERSONNEL

REFERENCE NO. 4

SHEET 4 OF 9

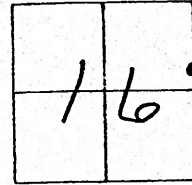
NOTES BARNHISEL RC *Cuff*
 H.C. CORDES *Jon*
 R.C. Glen
m m

DATE 9-3-96 *5/21/03*
 WEATHER SUNNY
 TEMP. +85° *60°*

ROUTE 228
 COUNTY SENECA
 TOWNSHIP Adams
 SECTION 16
T 3 N R 16 E

TYPE MONUMENT Lg RR SPK
~~STONE~~ - BELOW 2"
 LEFT- & PAV'T. - ~~SET~~ 3.5
4.3 TO LT EDGE PAVEMENT
 S.L.M. 31+50

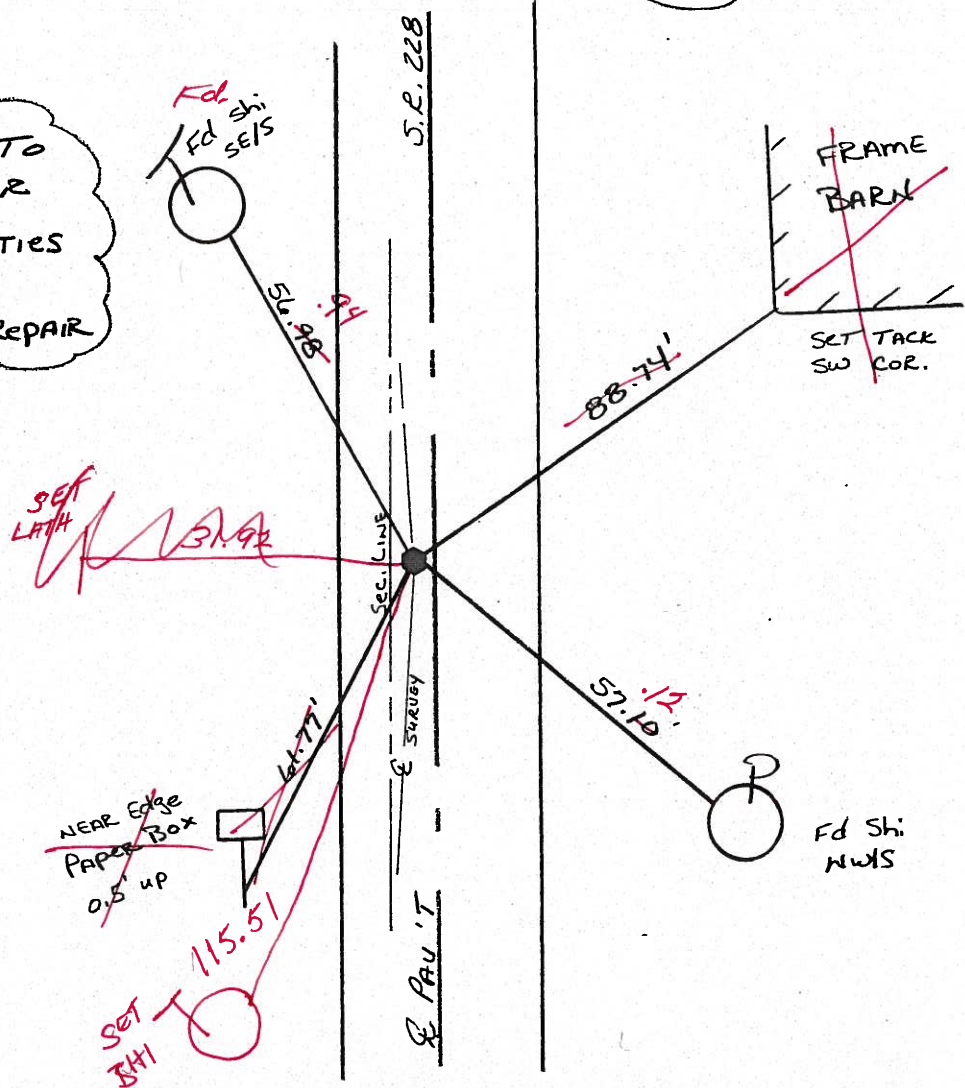
*4-5-03
uncovered*



RECORD: P.O.T.
 31+52.06
 SET RR SPK'S ON
 SEC. LINE & SURVEY
 (1.14) BETWEEN PTS

RESET PK & WASHER
 10-2-96
 MB
 & Survey ✓

NOTE: UNABLE TO
 RESET P.O.T. FOR
 SEC. LINE; REF. TIES
 GONE & BECAUSE OF
 FULL DEPTH PAV'T REPAIR



O.D.O.T. DISTRICT 2 SURVEY OFFICE

PERSONNEL _____

REFERENCE NO. 4

SHEET 4 OF 9

NOTES BARNHISEL RC

H.C. CORDES

R.C. _____

DATE 9-3-96

WEATHER SUNNY

TEMP. +85°

ROUTE 228

COUNTY SENECA

TOWNSHIP Adams

SECTION 16

T 3 N R 16 E

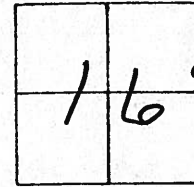
TYPE MONUMENT Lg RR SPK

~~ON SURFACE~~ - BELOW 2"

LEFT- & PAV'T. - ~~RIGHT~~ 3.5

4.3 TO LT EDGE PAVEMENT

S.L.M. 31+50



Record: P.O.T.

31+52.06

SET RR SPK'S ON

SEC. LINE & SURVEY
(1.64) BETWEEN PTS

Reset PK & WASHER

10-2-96

MB

& Survey

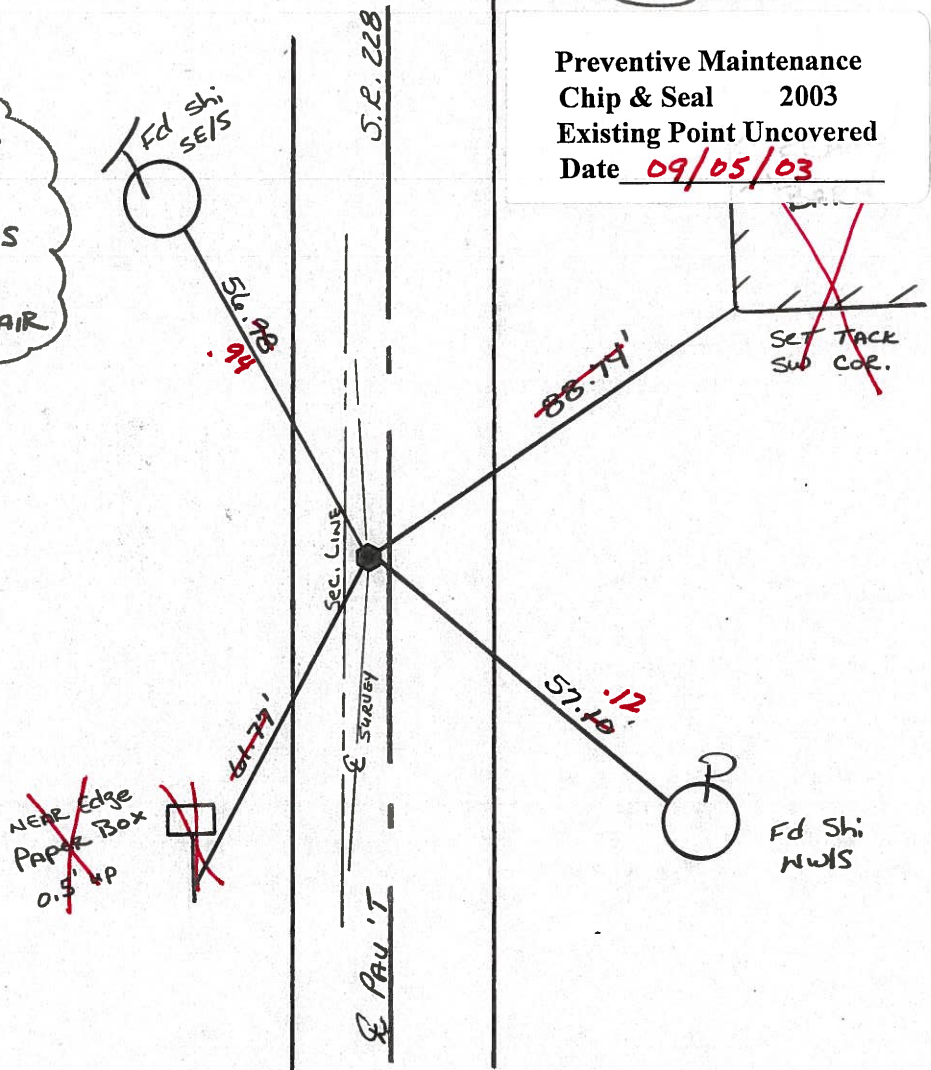
NOTE: UNABLE TO
RESET P.O.T. FOR
SEC. LINE: REF. TIES
GONE & BECAUSE OF
FULL DEPTH PAV'T REPAIR

Preventive Maintenance

Chip & Seal 2003

Existing Point Uncovered

Date 09/05/03

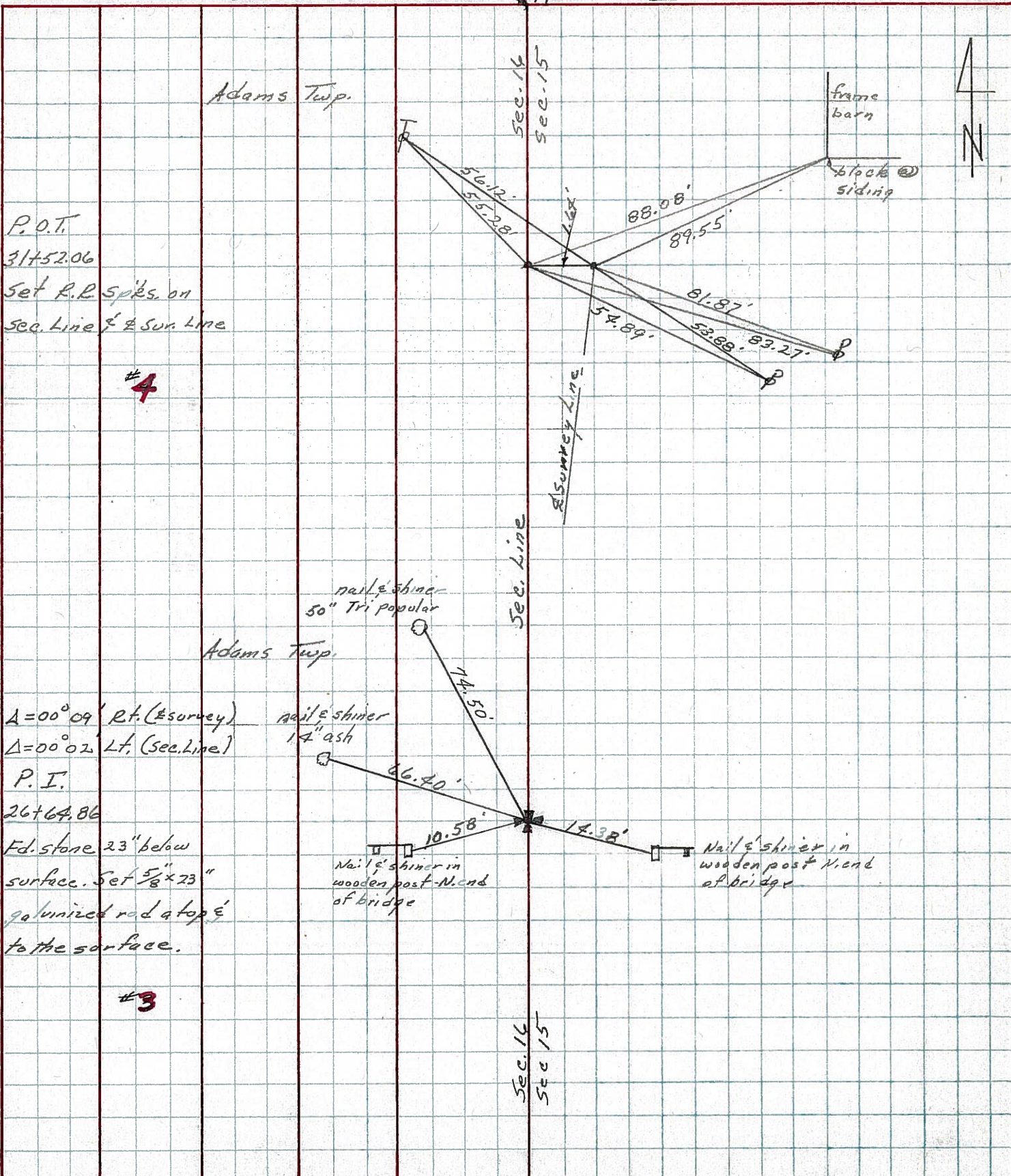


PERSONNEL	TITLE	PERSONNEL	TITLE
Ash			
Cronin			
Ripple			
Anderson			

COUNTY Seneca DATE 11/3/72
 S. R. #228 WEATHER sunny
 SEC. 'K' ICH. #485 TEMP. 50°

DESCRIPTION Ties for Control Points JOB NO. _____

④



③

P.O.T.
31752.06
Set R.P. spks. on
Sec. Line & Sun. Line

#4

$\Delta = 00^{\circ}09'$ Rt. (Survey)
 $\Delta = 00^{\circ}02'$ Lt. (Sec. Line)

P.I.
26764.86
Fd. stone 23" below
surface. Set $5/8" \times 23"$
galvanized rod a top &
to the surface.

#3

Sec. 14
Sec. 15