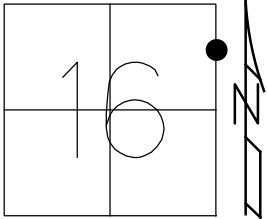


O.D.O.T. DISTRICT 2 SURVEY OFFICE (USE ONLY)

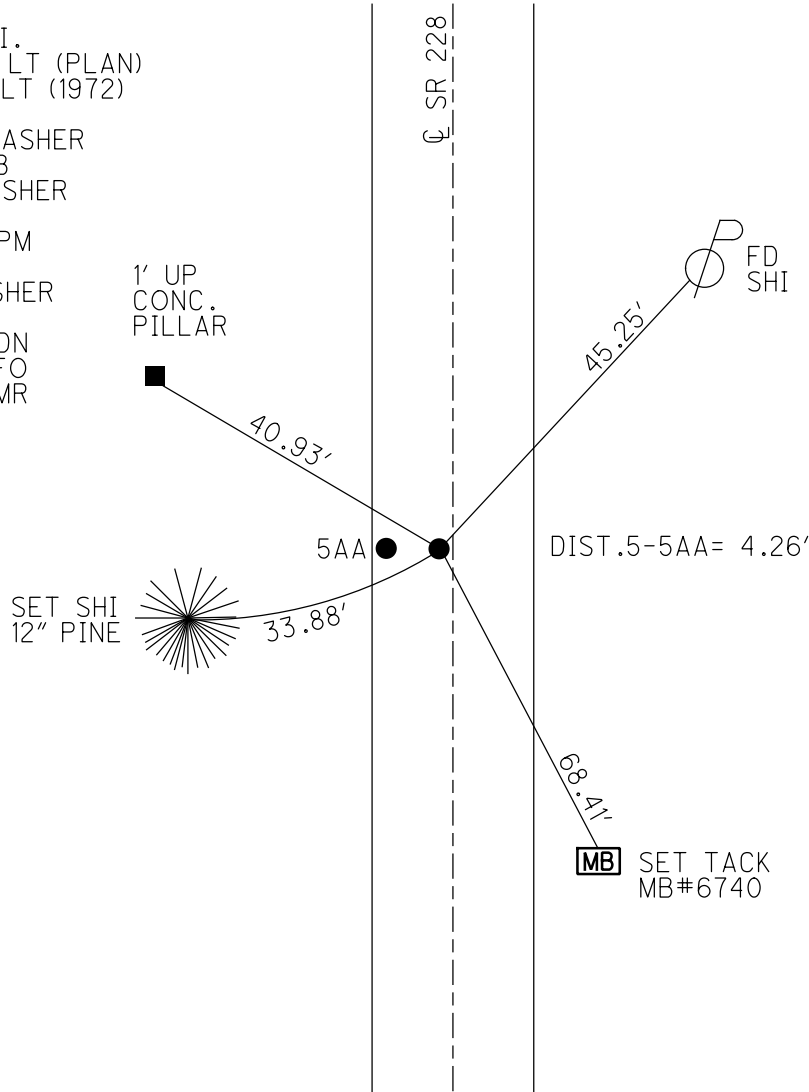
PERSONNEL _____ REFERENCE NO. 5 SHEET 5 OF 11
 NOTES RHOADES DATE 8/23/21 ROUTE SR 228
 H.C. NIESE WEATHER FOG COUNTY SENECA
 R.C. RHOADES TEMP. 73° TOWNSHIP ADAMS
 DWG BY RHOADES PID PVTRAIN SECTION 16
 T 3 N R 16 E

TYPE MONUMENT P.K./WASHER
 ON SURFACE - ~~BELOW~~ ON
 OFFSET CL PAVEMENT 2.8' LT : ~~RT~~
7.5' TO LT EDGE PAVEMENT
 STATION: 39+97



HORZ.DATUM: NAD83 2011 GEOID: NAVD88 2018
 GRID: NORTHING: 567831.923 EASTING: 1826780.896

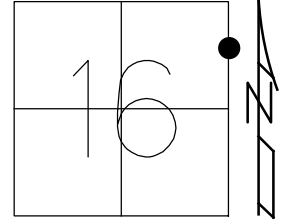
RECORD: P.I.
 $\Delta = 00^\circ 22' \text{ LT (PLAN)}$
 $\Delta = 00^\circ 21' \text{ LT (1972)}$
 9/3/96
 SET P.K./WASHER
 10-2-96, MB
 FD P.K./WASHER
 9/5/03
 7/16/09, KPM
 7/15/10
 FD.P.K./WASHER
 REF5
 8/23/21, TDN
 2/16/22, JFO
 4/14/23, JMR



O.D.O.T. DISTRICT 2 SURVEY OFFICE (USE ONLY)

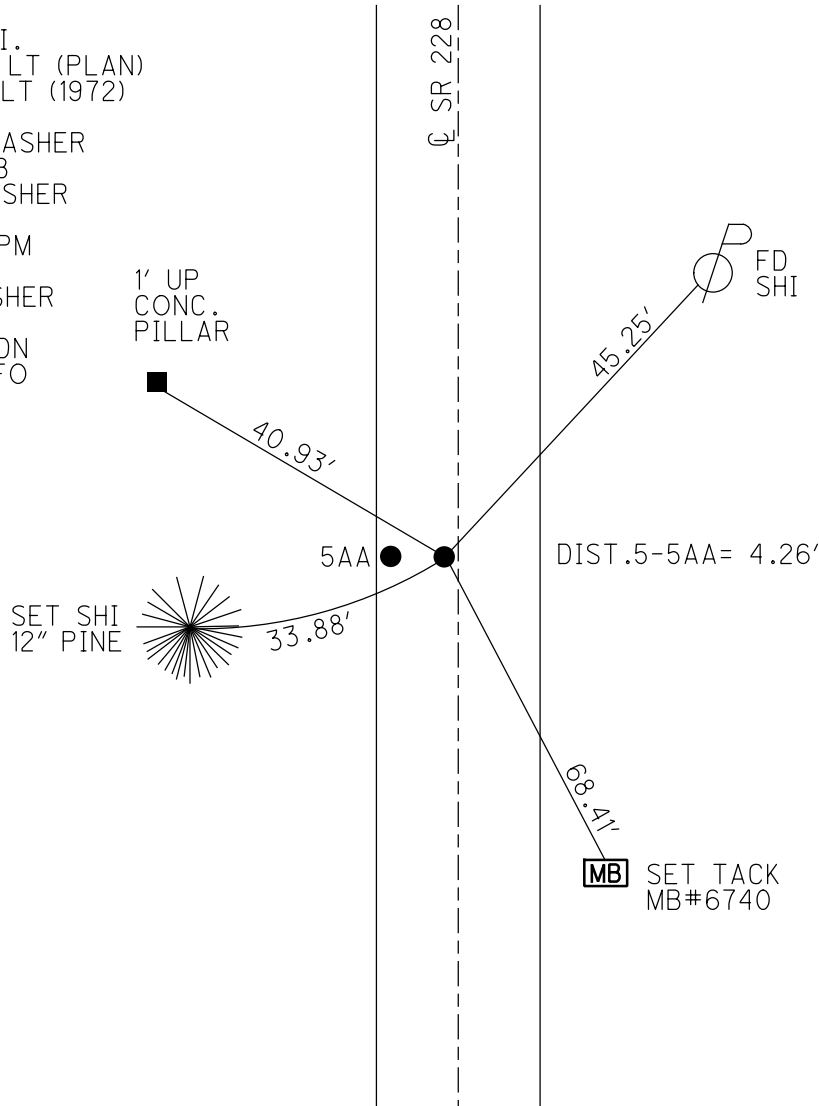
PERSONNEL _____ REFERENCE NO. 5 SHEET 5 OF 11
 NOTES RHOADES DATE 8/23/21 ROUTE SR 228
 H.C. NIESE WEATHER FOG COUNTY SENECA
 R.C. RHOADES TEMP. 73° TOWNSHIP ADAMS
 DWG BY RHOADES PID PVTRAIN SECTION 16
 T 3 N R 16 E

TYPE MONUMENT P.K./WASHER
 ON SURFACE - ~~BELOW~~ ON
 OFFSET \odot PAVEMENT 2.8' LT : ~~RT~~
7.5' TO LT EDGE PAVEMENT
 STATION: 39+97



HORZ.DATUM: NAD83 2011 GEOID: NAVD88 2018
 GRID: NORTHING: 567831.923 EASTING: 1826780.896

RECORD: P.I.
 $\Delta = 00^\circ 22'$ LT (PLAN)
 $\Delta = 00^\circ 21'$ LT (1972)
 9/3/96
 SET P.K./WASHER
 10-2-96, MB
 FD P.K./WASHER
 9/5/03
 7/16/09, KPM
 7/15/10
 FD.P.K./WASHER
 REF5
 8/23/21, TDN
 2/16/22, JFO



O.D.O.T. DISTRICT 2 SURVEY OFFICE

PERSONNEL _____ REFERENCE NO. 5 SHEET 5 OF 9

NOTES BARNHISEL RC Cuff 5/21/03

H.C. CORDES JON DATE 9-3-96 ROUTE ZZ8

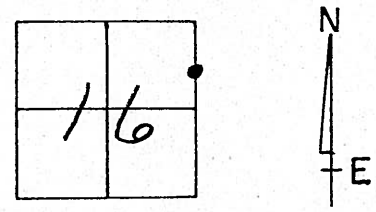
R.C. Glen WEATHER SUNNY COUNTY SENECA

MM TEMP. +85° 60° TOWNSHIP Adams

SECTION 16

T 3 N R 16 E

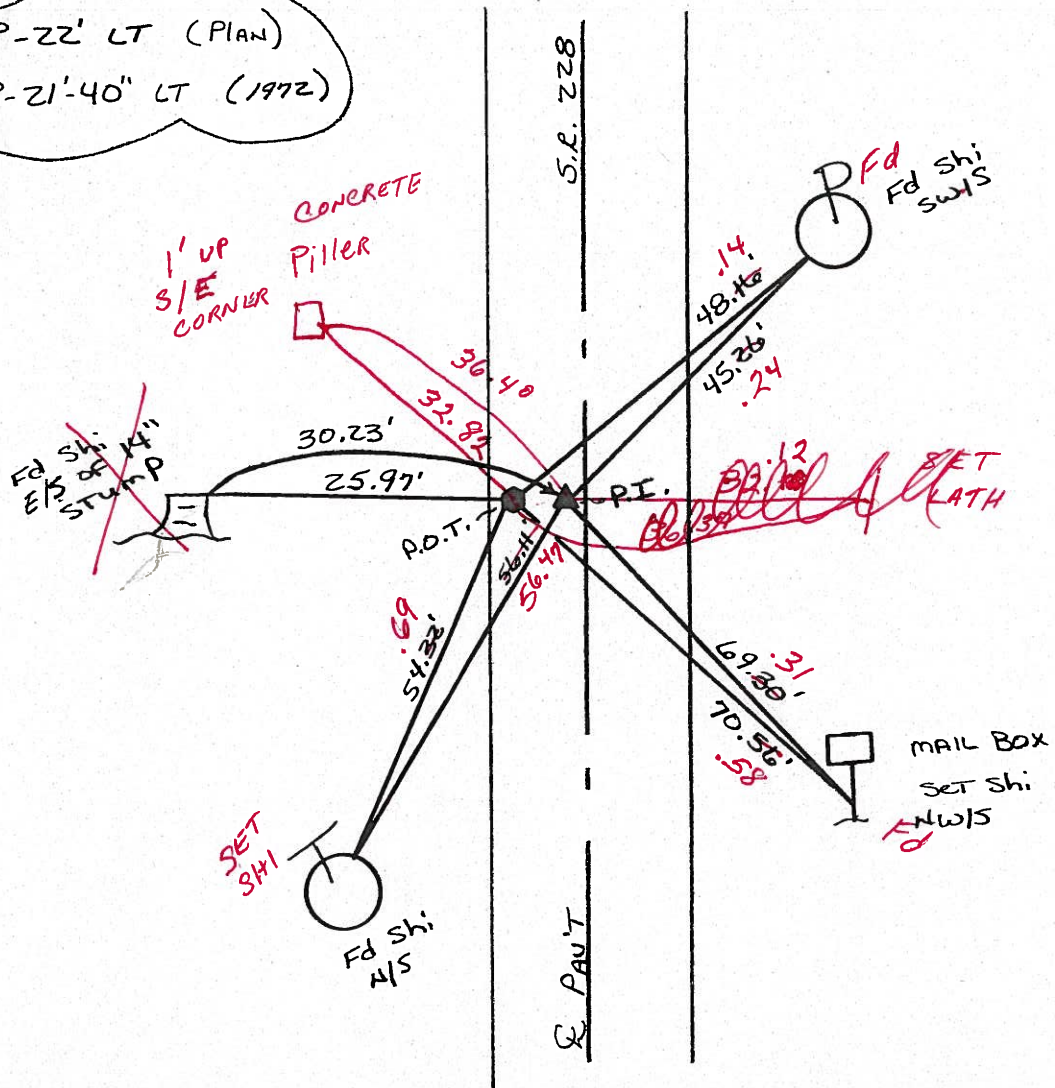
	P.O.T.	P.I.
TYPE MONUMENT	RR. Spk	I-Pin
CONCRETE SURFACE - BELOW	3"	3"
LEFT- & PAV'T. - RIGHT	7.0'	2.8'
PI 7.5 TO LT EDGE PAVEMENT		
S.L.M.	39+97	4.22' BETWEEN POINTS



RECORD: P.O.T.
39+92.34 ON
SEC. LINE

Reset PK'S & WASHERS
10-2-96
MB ✓

P.I. $\Delta = 00^\circ - 22' - 22''$ LT (PLAN)
 $\Delta = 00^\circ - 21' - 40''$ LT (1972)



O.D.O.T. DISTRICT 2 SURVEY OFFICE

PERSONNEL

REFERENCE NO. 5

SHEET 5 OF 9

NOTES BARNHISEL RC

H.C. CORDES

R.C. _____

DATE 9-3-96

WEATHER SUNNY

TEMP. +85°

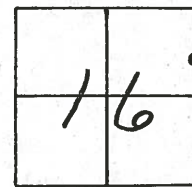
ROUTE 228

COUNTY SENECA

TOWNSHIP Adams

SECTION 16

T 3 N R 16 E

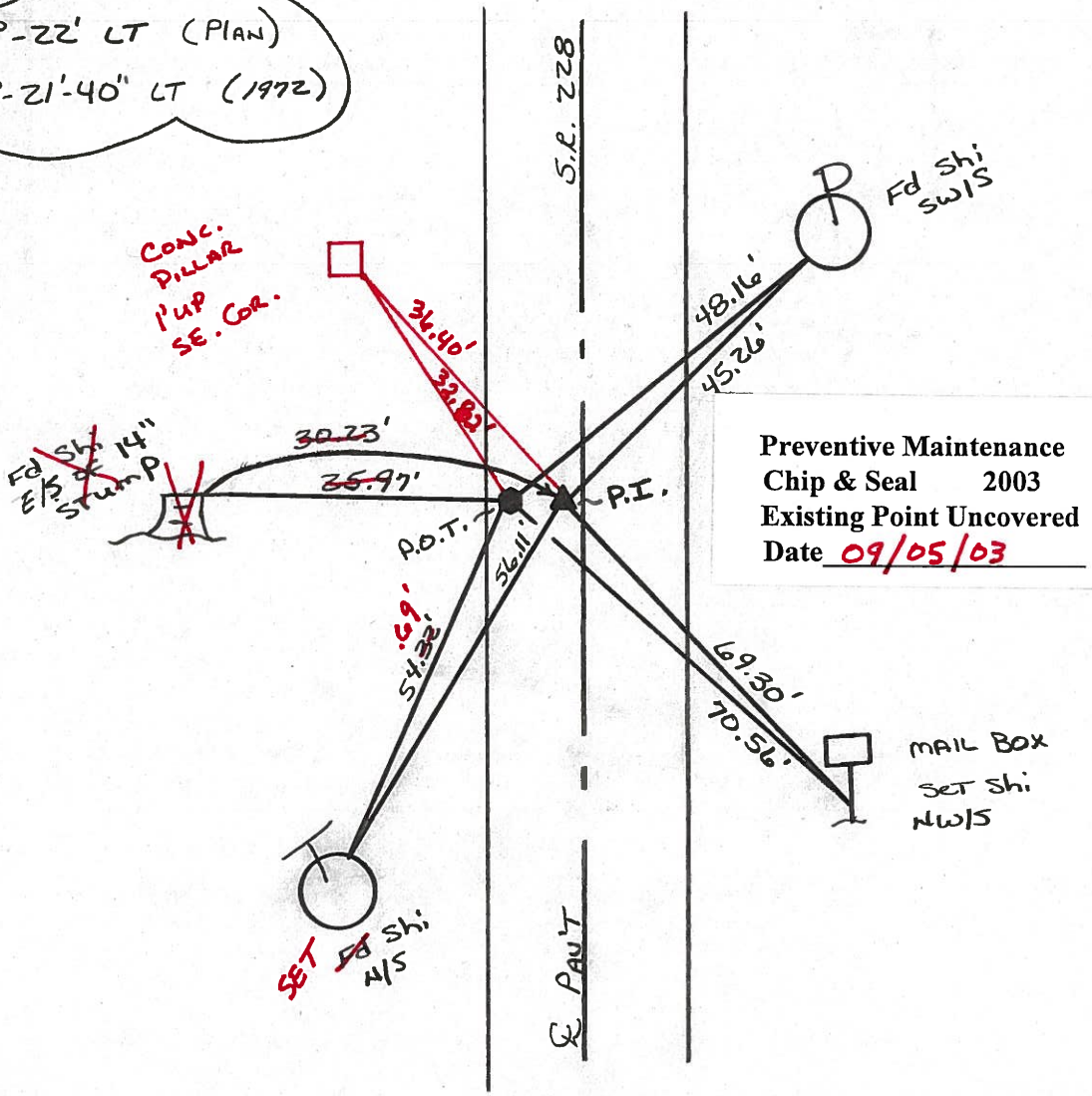


	P.O.T.	P.I.
TYPE MONUMENT	RR. Spk	I-PIN
ON SURFACE - BELOW	3"	3"
LEFT- & PAV'T. - RIGHT	7.0'	2.8'
PI 7.5 TO LT EDGE PAVEMENT		
S.L.M.	39+97	4.22 BETWEEN POINTS

RECORD: P.O.T.
39+92.34 ON
SEC. LINE

Reset PK'S & WASHERS
10-2-96
MB

P.I. $\Delta = 00^\circ - 22' - 00''$ LT (PLAN)
 $\Delta = 00^\circ - 21' - 40''$ LT (1972)

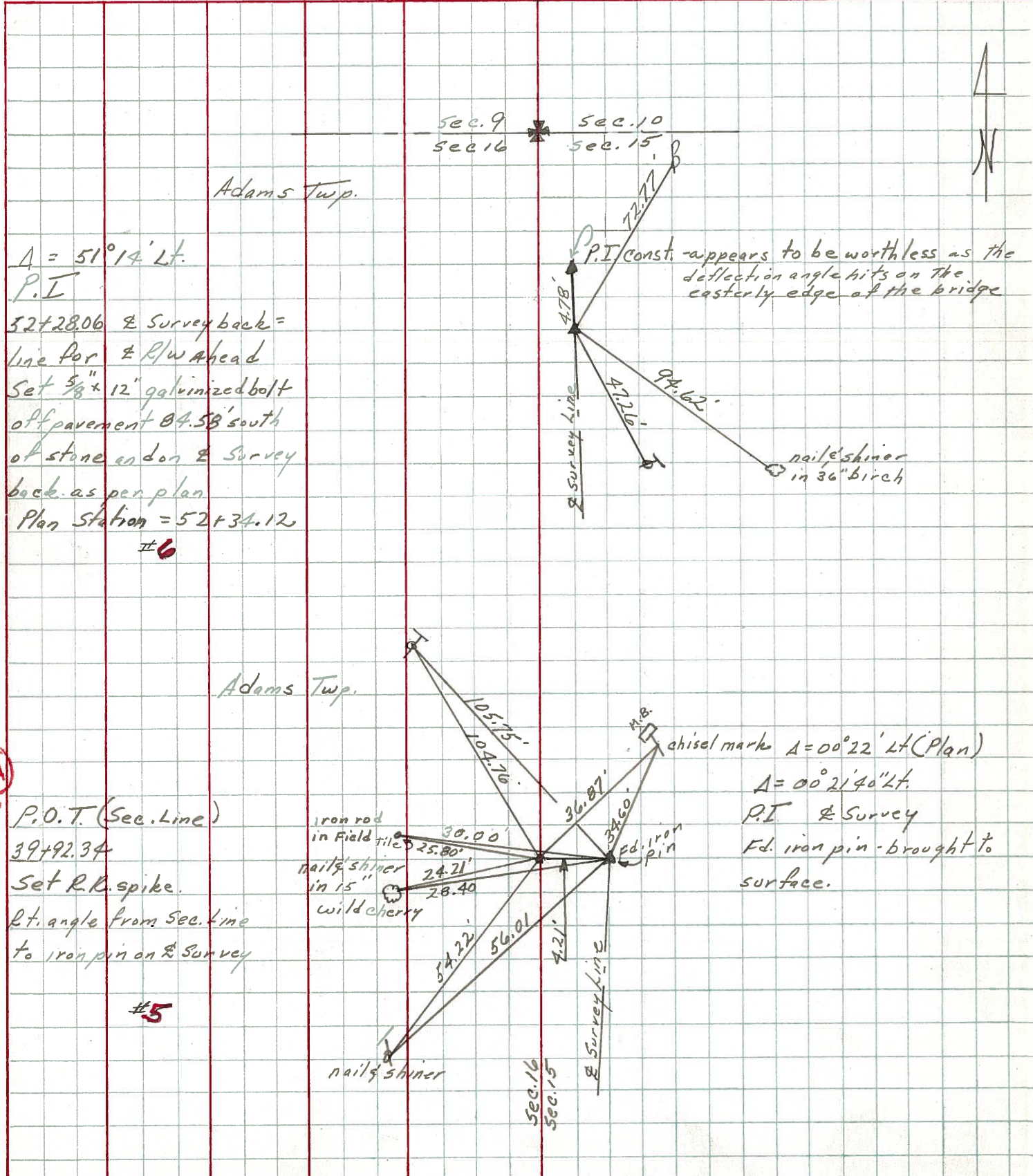


Preventive Maintenance
Chip & Seal 2003
Existing Point Uncovered
Date 09/05/03

PERSONNEL	TITLE	PERSONNEL	TITLE	COUNTY	DATE	WEATHER	TEMP.
Ash				Seneca	11/3/72	cloudy	50°
Cronin				S. R. #228			
Ripple				SEC. 'K' I.C.H. #485			
Anderson							

DESCRIPTION Ties for Control Points JOB NO. _____

LEFT CENTER LINE R/W RIGHT



6

5-AA

5

#5

$A = 51^{\circ}14' Lt.$
 P.I.
 52+28.06 & Survey back =
 line for & R/W ahead
 Set $\frac{5}{8}$ " x 12" galvanized bolt
 off pavement @ 4.58' south
 of stone end on & Survey
 back as per plan.
 Plan Station = 52+34.12
 #6

P.O.T. (Sec. Line)
 39+92.34
 Set R.R. spike.
 Rt. angle from Sec. line
 to iron pin on & Survey

Adams Twp.
 iron rod in field tile 30.00'
 nails shiner in 15" wild cherry 25.80'
 24.21'
 28.40'
 54.22'
 56.01'
 4.21'
 Sec. 15
 Sec. 16
 & Survey Line
 chisel mark $A = 00^{\circ}22' Lt (Plan)$
 $A = 00^{\circ}21'40" Lt.$
 P.I. & Survey
 Ed. iron pin - brought to surface.