

O.D.O.T. DISTRICT 2 SURVEY OFFICE (USE ONLY)

PERSONNEL

REFERENCE NO. 5 A

SHEET 7 OF 11

NOTES RHOADES

DATE 8/23/21

ROUTE SR 228

H.C. NIESE

WEATHER FOG

COUNTY SENECA

R.C. RHOADES

TEMP. 73°

TOWNSHIP ADAMS

SECTION 16

DWG BY RHOADES PID PVTRAIN

T 3 N R 16 E

TYPE MONUMENT P.K./WASHER

ON SURFACE - ~~BELOW~~ ON

OFFSET Q PAVEMENT 4.2' ~~±~~ : RT

6' TO RT EDGE PAVEMENT

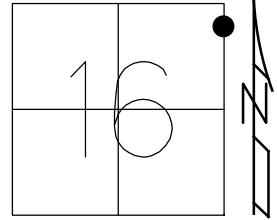
STATION: 49+59

HORIZ.DATUM: NAD83 2011

GEOID: NAVD88 2018

GRID: NORTHING: 568792.806

EASTING: 1826784.908



FD SHI  
8" BASSWOOD



40.82'

SET SHI  
12" MAPLE



45.57'

1' UP  
CHEVON  
SIGN POST

63.98'

62.85'



FD  
SHI

Q SR 228

RECORD: P.C.  
STA. 49+59.34  
9/3/96  
SET PK/WASHER  
10/2/96, MB  
FD P.K./WASHER  
9/5/03  
SV128  
7/29/09, KPM  
7/15/10  
FD P.K./WASHER  
REFA5  
8/23/21, TDN  
2/16/22, JFO  
4/14/23, JMR

O.D.O.T. DISTRICT 2 SURVEY OFFICE (USE ONLY)

PERSONNEL

REFERENCE NO. 5 A

SHEET 7 OF 11

NOTES RHOADES

DATE 8/23/21

ROUTE SR 228

H.C. NIESE

WEATHER FOG

COUNTY SENECA

R.C. RHOADES

TEMP. 73°

TOWNSHIP ADAMS

SECTION 16

DWG BY RHOADES

PID PVTRAIN

T 3 N R 16 E

TYPE MONUMENT P.K./WASHER

ON SURFACE - ~~BELOW~~ ON

OFFSET  $\phi$  PAVEMENT 4.2' ~~±~~ : RT

6' TO RT EDGE PAVEMENT

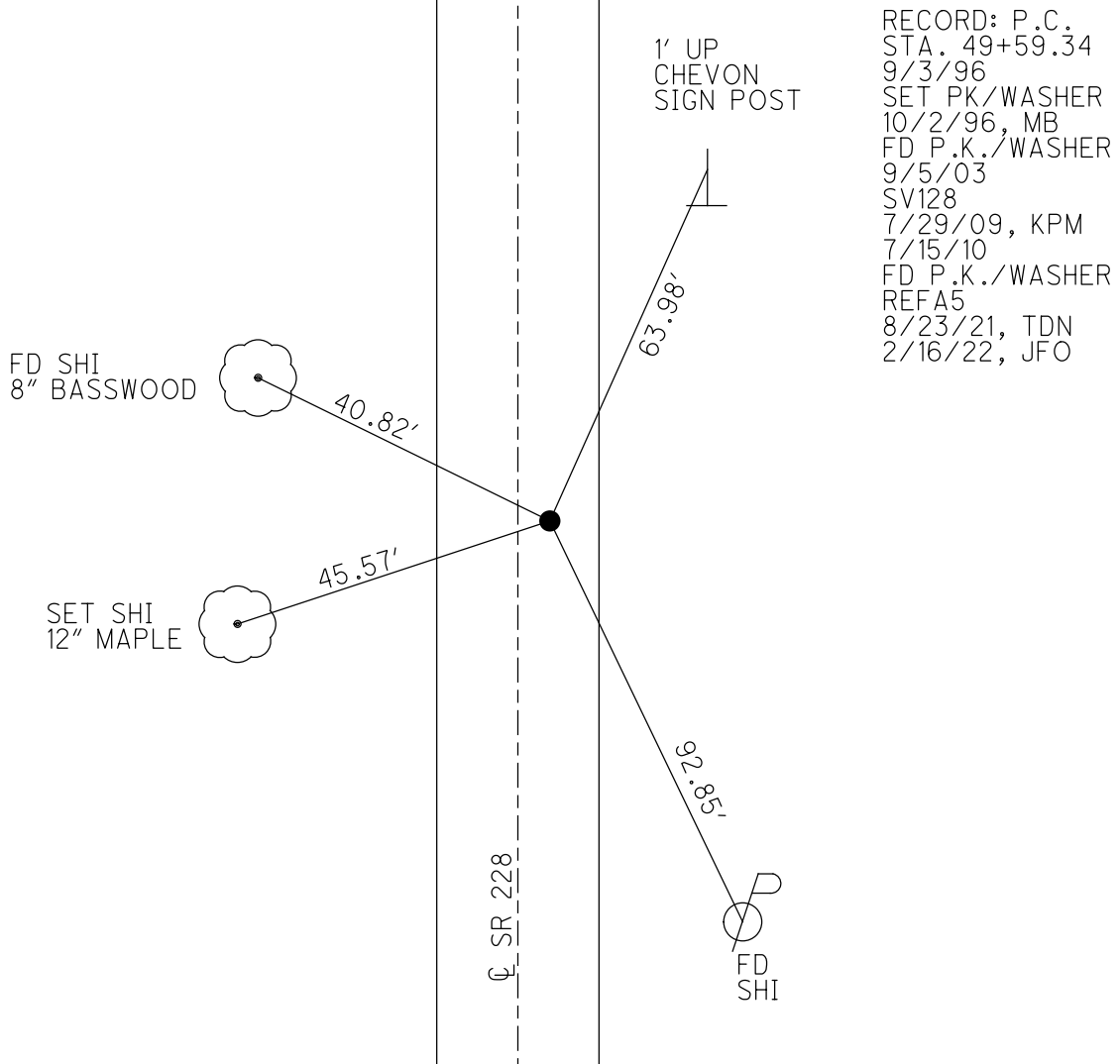
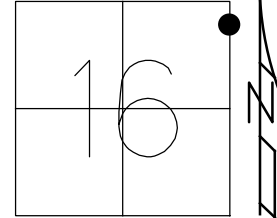
STATION: 49+59

HORZ.DATUM: NAD83 2011

GEOID: NAVD88 2018

GRID: NORTHING: 568792.806

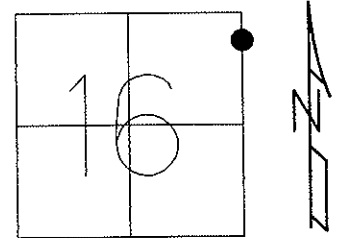
EASTING: 1826784.908



O.D.O.T. DISTRICT 2 SURVEY OFFICE (USE ONLY)

PERSONNEL \_\_\_\_\_ REFERENCE NO. 5-A SHEET 7 OF 11  
 NOTES MOSE DATE 7-14-09 ROUTE 228  
 H.C. BARNHISEL WEATHER SUNNY COUNTY SENECA  
 R.C. MOSE TEMP. +80° TOWNSHIP ADAMS  
 \_\_\_\_\_ SECTION 16  
 \_\_\_\_\_ T 3 N R 16 E

TYPE MONUMENT PK/WASHER  
 ON SURFACE - ~~BELOW~~ ON SURFACE  
~~LEFT - C PAV'T~~ - RIGHT 4.2' RIGHT  
6.0' TO RT. EDGE PAVEMENT  
 S.L.M. 49+59



Grid: Northing: \_\_\_\_\_ Easting: \_\_\_\_\_

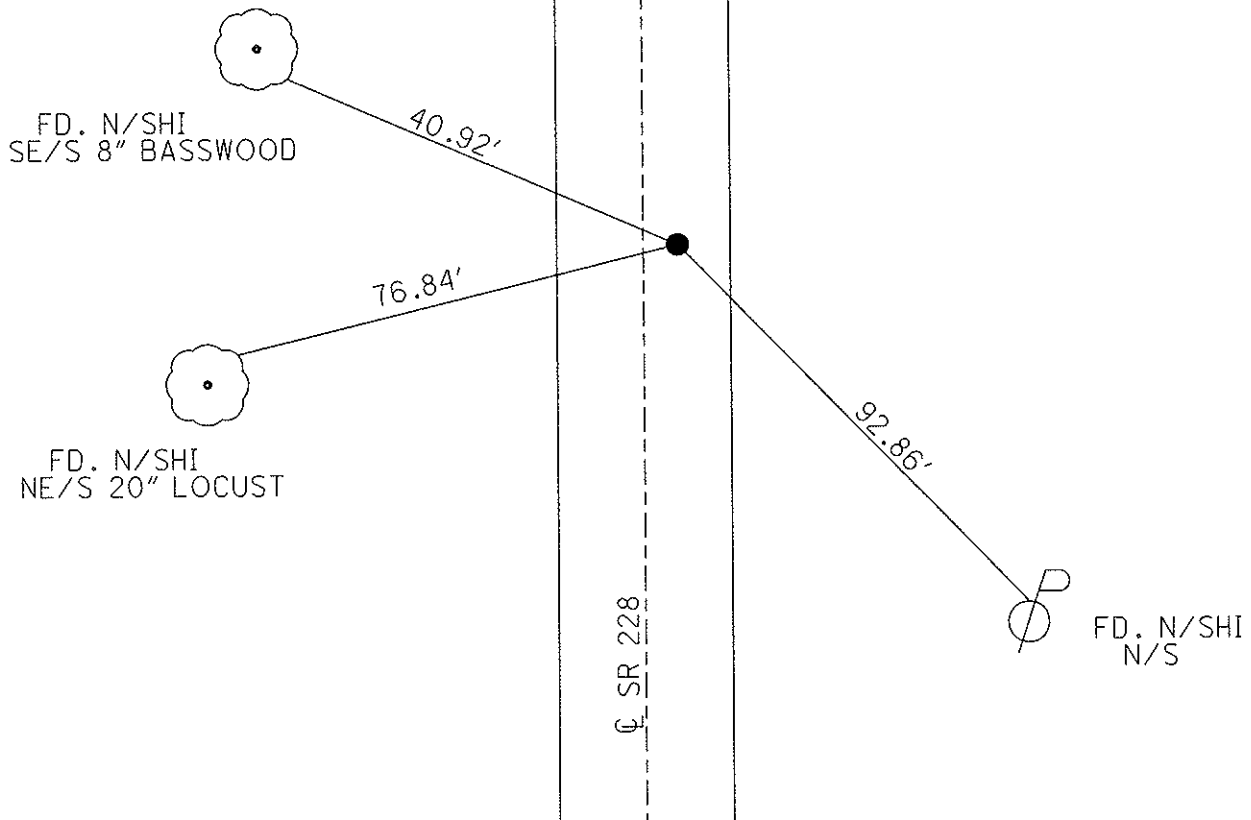
RECORD: 9/3/96  
 P.C. SET BY ODOT  
 STA. 49+59.34

RESET PK/WASHER  
 10-2-96 M.B.

GPS, SV128  
 7/29/09, KPM

Preventative Maintenance  
 Chip & Seal 2003  
 Existing Point Uncovered  
 Date: 9-05-03

Preventative Maintenance  
 Chip & Seal 2003  
 Existing Point Uncovered  
 Date: 7-15-10

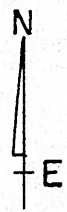
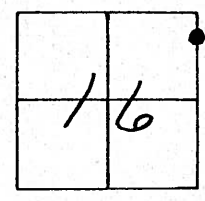


# O.D.O.T. DISTRICT 2 SURVEY OFFICE

PERSONNEL \_\_\_\_\_ REFERENCE NO. 5-A SHEET 6 OF 9  
 NOTES BARNHISEL RC CUFF 5/21/03  
 H.C. CORDES Jon DATE 9-3-96 ROUTE 228  
 R.C. Blen WEATHER SUNNY COUNTY SENECA  
 \_\_\_\_\_ TEMP. +85° 60° TOWNSHIP Adams  
 \_\_\_\_\_ SECTION 16  
 \_\_\_\_\_ T 3 N R 16 E

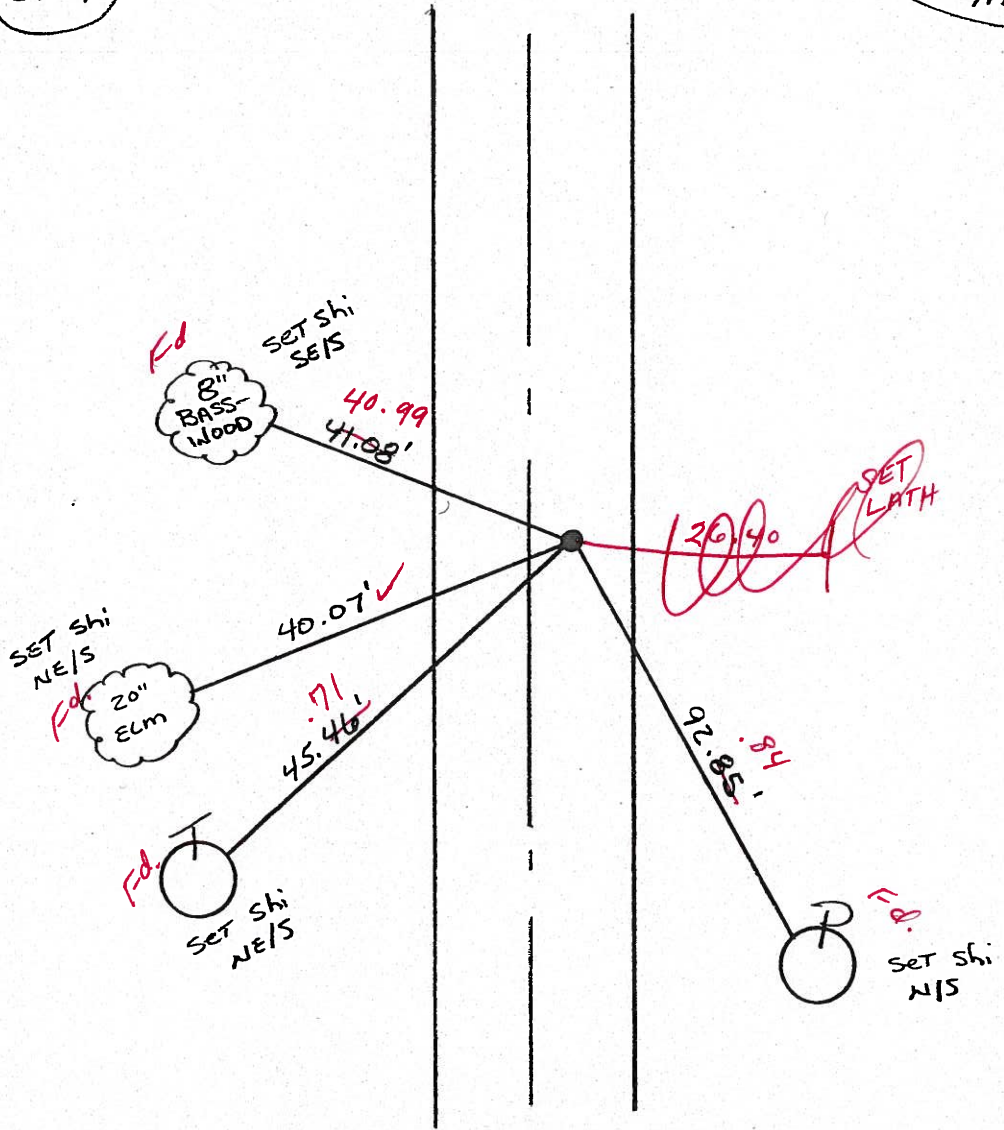
TYPE MONUMENT PK & WASHER P.C.  
 ON SURFACE - ~~BELOW~~ YES  
~~BELOW~~ - & PAV'T. - RIGHT 4.2  
 G.O TO RT EDGE PAVEMENT  
 S.L.M. 49+59

*9-5-03  
uncovered*



RECORD: P.C.  
 SET BY O.D.O.T.  
 Sta: 49+59.34

RESET PK & WASHER  
 10-2-96  
 MBS ✓



# O.D.O.T. DISTRICT 2 SURVEY OFFICE

PERSONNEL \_\_\_\_\_

REFERENCE NO. 5-A

SHEET 6 OF 9

NOTES BARNHISEL RC

H.C. CORDES

R.C. \_\_\_\_\_

DATE 9-3-96

WEATHER SUNNY

TEMP. +85°

ROUTE 228

COUNTY SENECA

TOWNSHIP Adams

SECTION 16

T 3 N R 16 E

TYPE MONUMENT PK & WASHER

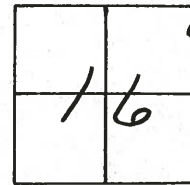
P.C.

ON SURFACE - ~~BELOW~~ YES

~~LEFT~~ - RIGHT PAV'T. - RIGHT 4.2

G.O. TO RT EDGE PAVEMENT

S.L.M. 49+59



RECORD: P.C.  
SET BY O.D.O.T.  
Sta: 49+59.34

Reset PK & WASHER  
10-2-96  
mB

Preventive Maintenance  
Chip & Seal 2003  
Existing Point Uncovered  
Date 09/05/03

