

O.D.O.T. DISTRICT 2 SURVEY OFFICE (USE ONLY)

PERSONNEL _____ REFERENCE NO. 6 SHEET 8 OF 11
 NOTES RHOADES DATE 8/23/21 ROUTE SR 228
 H.C. NIESE WEATHER FOG COUNTY SENECA
 R.C. RHOADES TEMP. 73° TOWNSHIP ADAMS
 DWG BY RHOADES PID PVTRAIN SECTION 16
 T 3 N R 16 E

TYPE MONUMENT D.N.F.

ON SURFACE - BELOW -

OFFSET \odot PAVEMENT 64' ~~RT~~ : RT

53' RT TO RT EDGE PAVEMENT

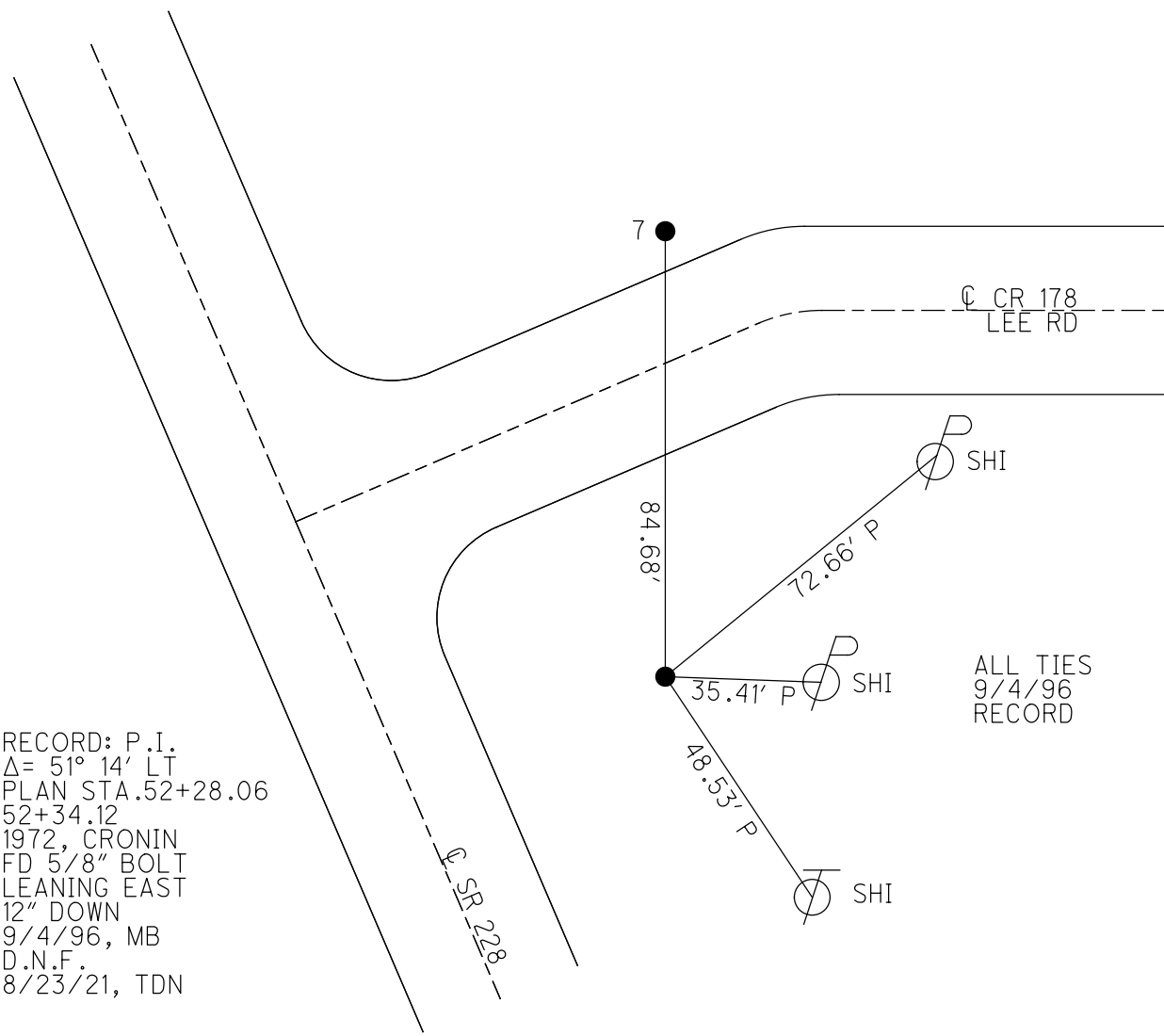
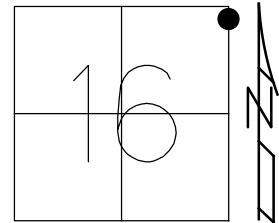
STATION: 52+34.12

HORZ.DATUM: NAD83 2011

GEOID: NAVD88 2018

GRID: NORTHING: 569119.468

EASTING: 1826796.571



RECORD: P.I.
 $\Delta = 51^\circ 14' \text{ LT}$
 PLAN STA. 52+28.06
52+34.12
 1972, CRONIN
 FD 5/8" BOLT
 LEANING EAST
 12" DOWN
 9/4/96, MB
 D.N.F.
 8/23/21, TDN

ALL TIES
 9/4/96
 RECORD

O.D.O.T. DISTRICT 2 SURVEY OFFICE (USE ONLY)

PERSONNEL

REFERENCE NO. 6

SHEET 8 OF 11

NOTES MOSER

DATE 9/4/96

ROUTE SR 228

H.C. BARNHISEL

WEATHER CLOUDY

COUNTY SENECA

R.C. MOSER

TEMP. 70°

TOWNSHIP ADAMS

SECTION 16

T 3 N R 16 E

TYPE MONUMENT 5/8" BOLT, LEANING

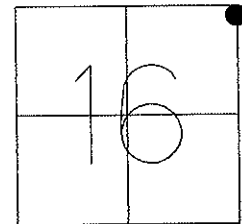
~~ON SURFACE~~ - BELOW 12"

~~LEFT~~ - Q PAV'T - RIGHT 64'

53' RT TO RT EDGE PAVEMENT

S.L.M. _____

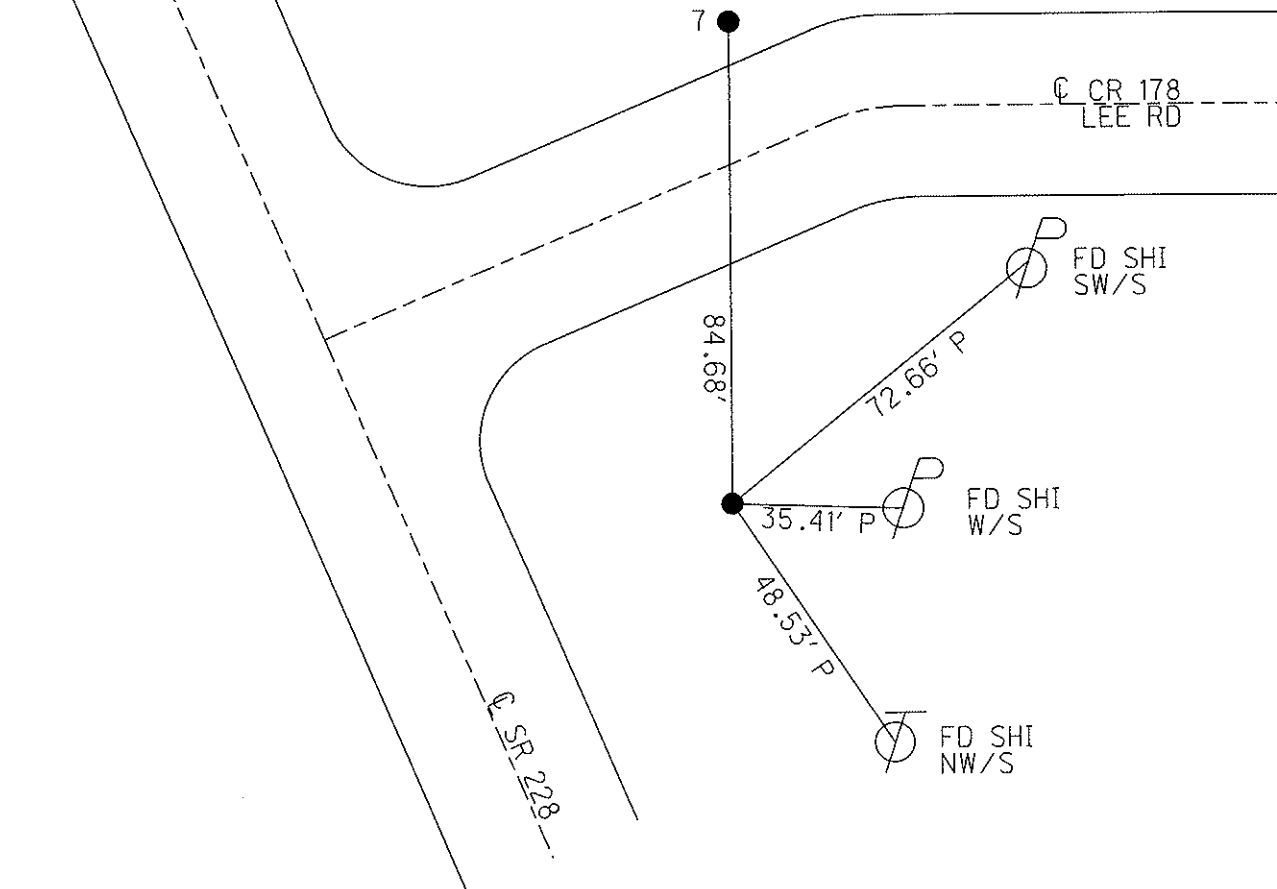
Grid: Northing: _____ Easting: _____



RECORD: P.I. SURVEY = 51° 14' LT
1972 BY CRONIN. PLAN STA.52+28.06
52+34.12.

NOTE: P.I. WAS DESTROYED DURING
CONSTRUCTION. RECORD DISTANCE
BETWEEN P.I.'S = 4.78'

BOLT LEANING EAST



O.D.O.T. DISTRICT 2 SURVEY OFFICE

PERSONNEL _____

REFERENCE NO. 627

SHEET 7 OF 9

NOTES BARNHISEL RC

H.C. CORDS

R.C. _____

DATE 9-4-96

WEATHER cloudy

TEMP. +70°

ROUTE 228

COUNTY SENECA

TOWNSHIP Adams

SECTION 16

T 3 N R 16 E

Sec. CORNER

P.I. Survey

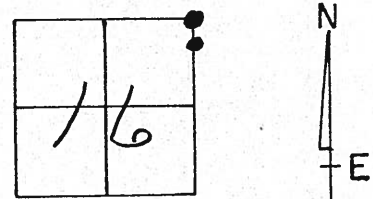
TYPE MONUMENT 3/4" REBAR IN CONC. 5/8" BOLT (LEANING)

ON SURFACE - BELOW SURFACE 12" Below

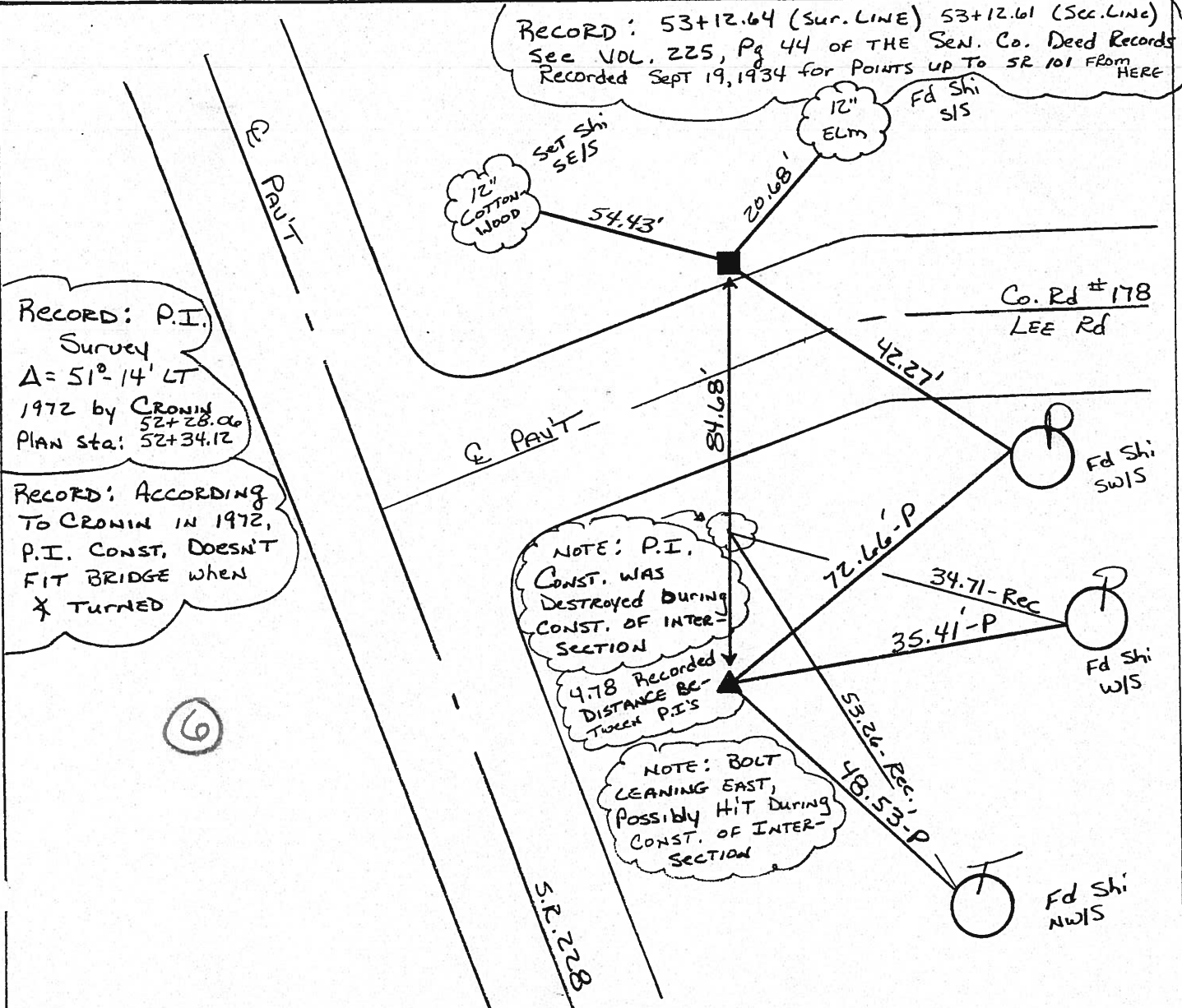
~~RT OF~~ RT EDGE PAV'T. - RIGHT 12' RT & Co. Rd 64' RT & SR 228

9/11' 53'

S.L.M. 52+75± Sec. CORNER



RECORD: 53+12.64 (Sur. Line) 53+12.61 (Sec. Line)
See VOL. 225, Pg 44 of THE Sen. Co. Deed Records
Recorded Sept 19, 1934 for POINTS UP TO SR 101 FROM HERE



RECORD: P.I. Survey
 $\Delta = 51^{\circ} 14' LT$
1972 by CROWIN
52+28.00
PLAN sta: 52+34.12

RECORD: ACCORDING TO CROWIN IN 1972, P.I. CONST. DOESN'T FIT BRIDGE WHEN \times TURNED

NOTE: P.I. CONST. WAS DESTROYED DURING CONST. OF INTER-SECTION
4.78 RECORDED DISTANCE BETWEEN P.I.'S

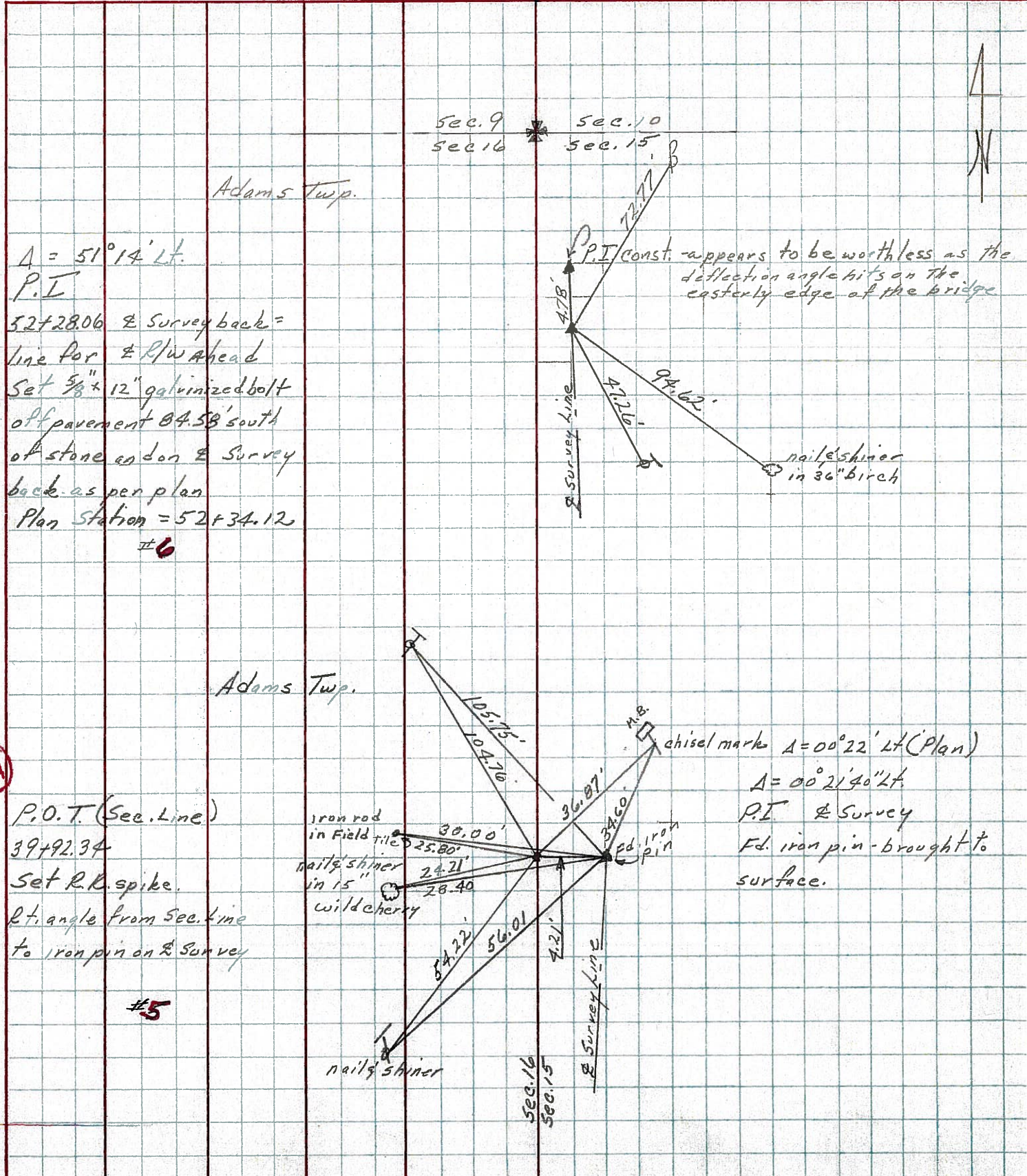
NOTE: BOLT LEANING EAST, POSSIBLY HIT DURING CONST. OF INTER-SECTION

(6)

PERSONNEL	TITLE	PERSONNEL	TITLE	COUNTY	DATE	WEATHER	TEMP.
Ash				Seneca	11/3/72	cloudy	50°
Cronin				S. R. #228			
Ripple				SEC. 'K' I.C.H. #485			
Anderson							

DESCRIPTION Ties for Control Points JOB NO. _____

LEFT CENTER LINE R/W RIGHT



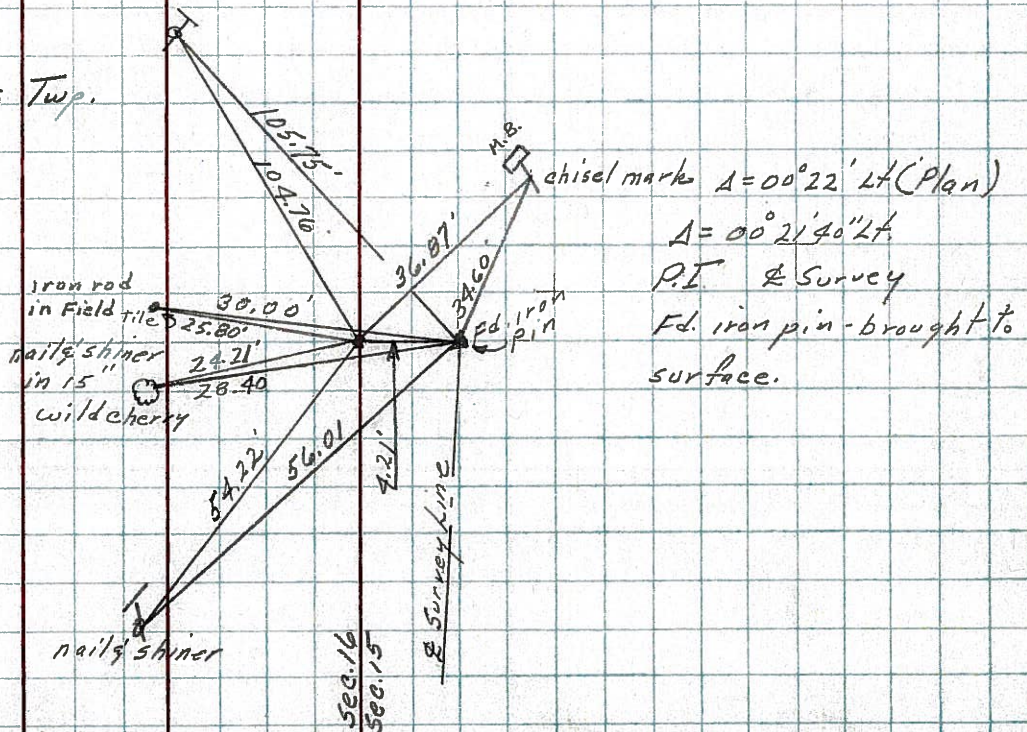
6

$\Delta = 51^{\circ}14' \text{ Lt.}$
 P.I.
 52+28.06 & Survey back =
 line for & R/W ahead
 Set $\frac{3}{8} \times 12$ galvanized bolt
 off pavement 04.58' south
 of stone end on & Survey
 back as per plan
 Plan Station = 52+34.12
 #6

5-AA

5

P.O.T. (Sec. Line)
 39+92.34
 Set R.R. spike.
 Rt. angle from Sec. line
 to iron pin on & Survey
 #5



Adams Twp.

chisel mark $\Delta = 00^{\circ}22' \text{ Lt (Plan)}$
 $\Delta = 00^{\circ}21'40'' \text{ Lt}$
 P.I. & Survey
 Fd. iron pin - brought to
 surface.

PERSONNEL	TITLE	PERSONNEL	TITLE	COUNTY	DATE
Schneider				Seneca	3-16-70
Mosser				S. R. 228	WEATHER Cloudy
Barbour				SEC. S.R. #19 to S.R. #101	TEMP. 30°
Potts					

DESCRIPTION Ties for Control Points JOB NO. _____

LEFT	CENTER LINE	RIGHT
62+55.9 $\Delta = 0^\circ 55' \text{ LT}$ 8662		Δ did not find
Car. Stone 53+18.7		
(6) 52+34.12 P.I. 8661		Co. Rd. East } did not find
(5-AA) P.I. 39+97.4 $\Delta = 0^\circ 22' \text{ LT}$ Fd. 1" sq. Iron pin 8" down 8660		
26+65.5 8659		Δ did not find