

O.D.O.T. DISTRICT 2 SURVEY OFFICE (USE ONLY)

PERSONNEL _____ REFERENCE NO. 7 SHEET 9 OF 11
 NOTES RHOADES DATE 8/23/21 ROUTE SR 228
 H.C. NIESE WEATHER FOG COUNTY SENECA
 R.C. RHOADES TEMP. 73° TOWNSHIP ADAMS
 DWG BY RHOADES PID PVTRAIN SECTION 16
 T 3 N R 16 E

TYPE MONUMENT D.N.F.

ON SURFACE - BELOW -

OFFSET C PAVEMENT 12', CR 178 LT : ~~RT~~

91.1' RT TO RT EDGE PAVEMENT

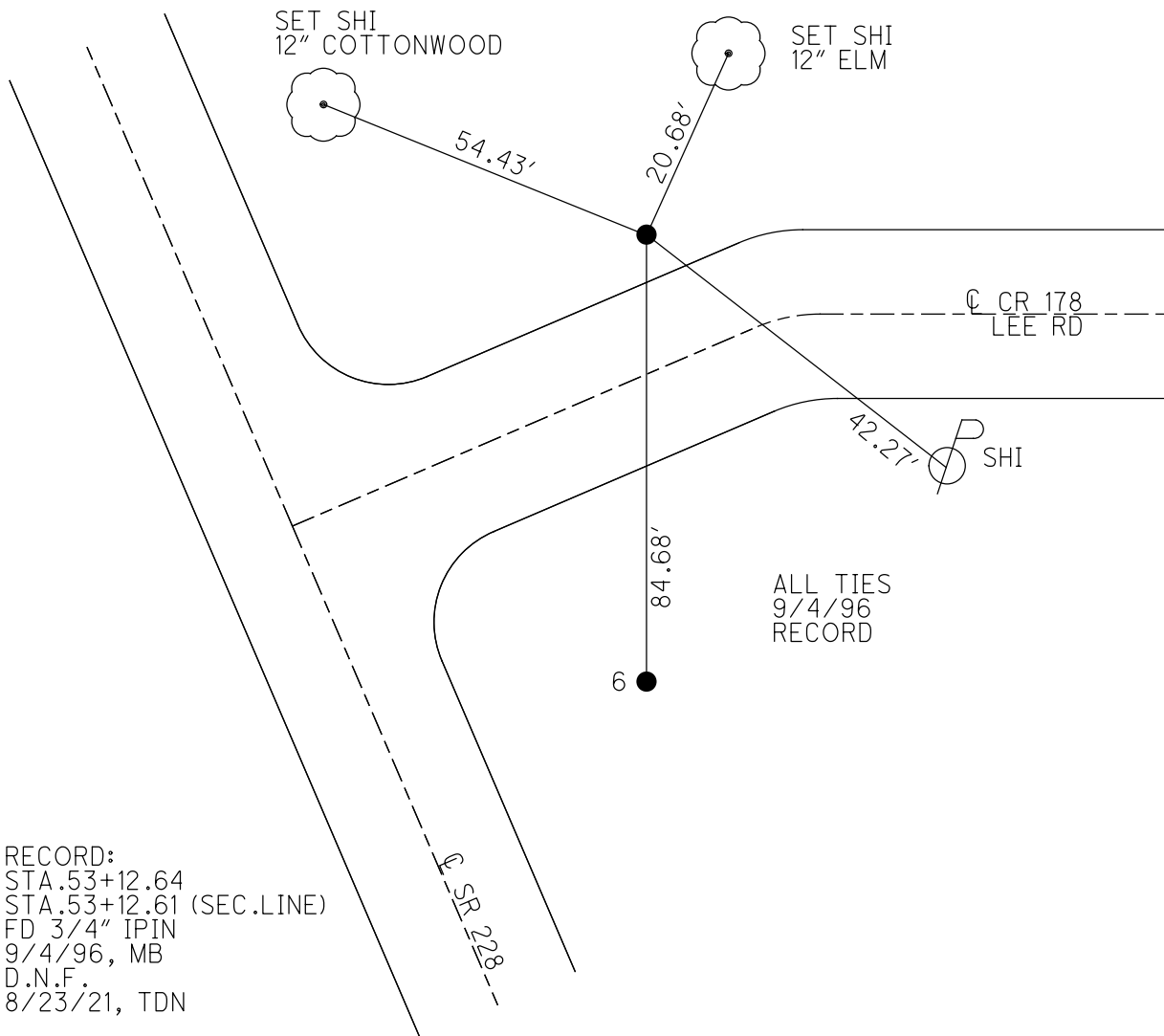
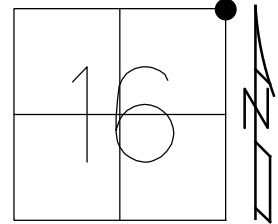
STATION: 52+75

HORZ.DATUM: NAD83 2011

GEOID: NAVD88 2018

GRID: NORTHING: 569158.381

EASTING: 1826797.496



RECORD:
 STA. 53+12.64
 STA. 53+12.61 (SEC. LINE)
 FD 3/4" IPIN
 9/4/96, MB
 D.N.F.
 8/23/21, TDN

O.D.O.T. DISTRICT 2 SURVEY OFFICE (USE ONLY)

PERSONNEL _____ REFERENCE NO. 7 SHEET 9 OF 11
 NOTES RHOADES DATE 8/23/21 ROUTE SR 228
 H.C. NIESE WEATHER FOG COUNTY SENECA
 R.C. RHOADES TEMP. 73° TOWNSHIP ADAMS
 _____ SECTION 16
 DWG BY RHOADES PID PVTRAIN T 3 N R 16 E

TYPE MONUMENT D.N.F.

ON SURFACE - BELOW -

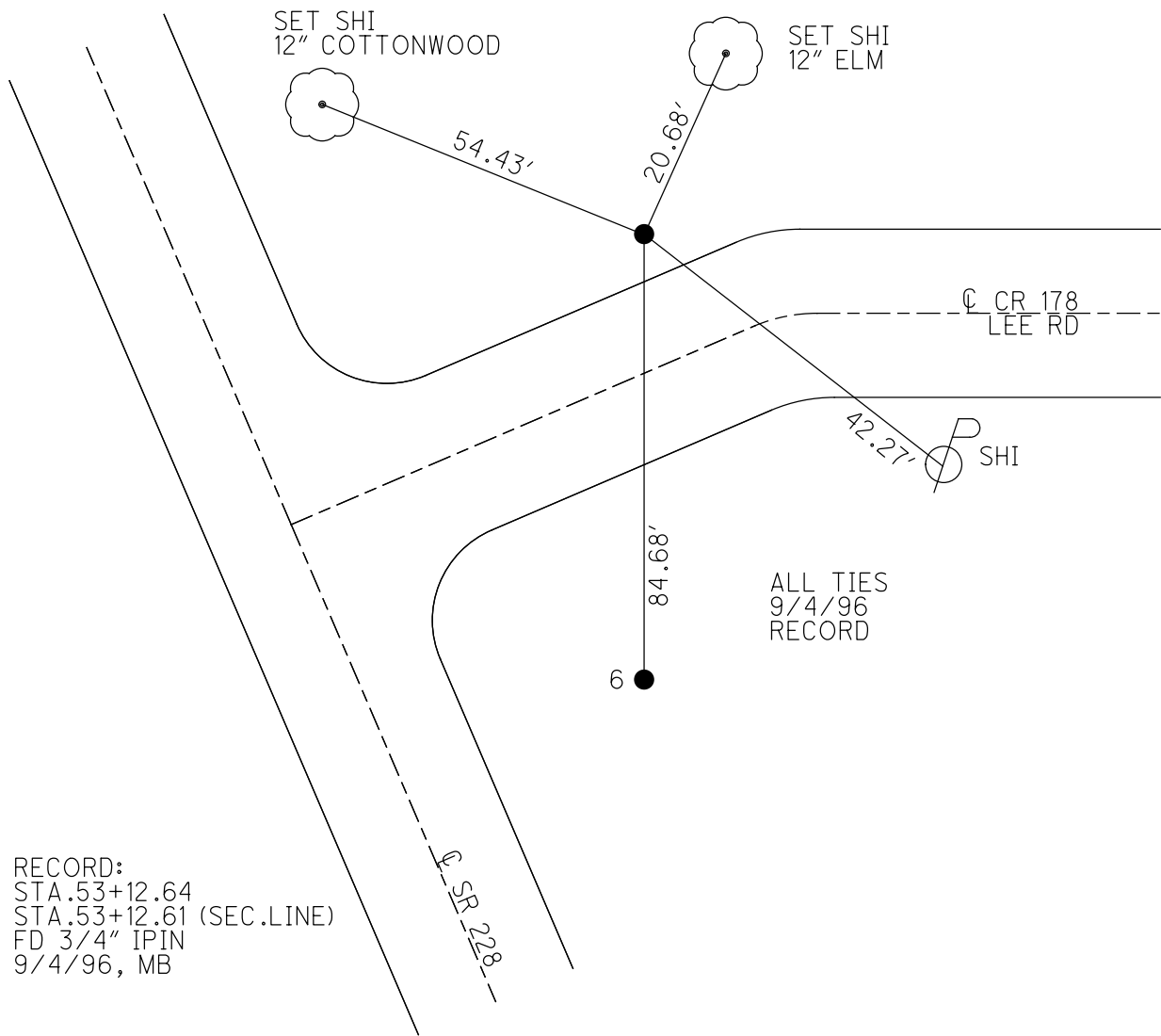
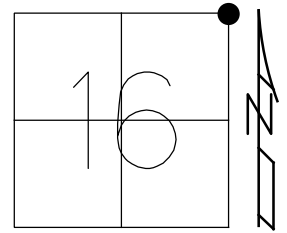
OFFSET \odot PAVEMENT 12', CR 178 LT : ~~RT~~

91.1' RT TO RT EDGE PAVEMENT

STATION: 52+75

HORZ.DATUM: NAD83 2011 GEOID: NAVD88 2018

GRID: NORTHING: 569158.381 EASTING: 1826797.496



ALL TIES
9/4/96
RECORD

RECORD:
STA. 53+12.64
STA. 53+12.61 (SEC. LINE)
FD 3/4" IPIN
9/4/96, MB

SENECA COUNTY, OHIO



MONUMENT No. 971

RE-ESTABLISHED BY:

F.J.P. & B.L.

TOWNSHIP 3 NORTH, RANGE 16 EAST.

ADAMS

TOWNSHIP

COMMON CORNER OF SECTION 9, 10, 16, & 15

KIND OF MONUMENT 3/4" IRON ROD 30" IN LENGTH

REMARKS FOUND IRON PIN 3" BELOW PAVEMENT SURFACE IN NORTH DRIVING LANE.

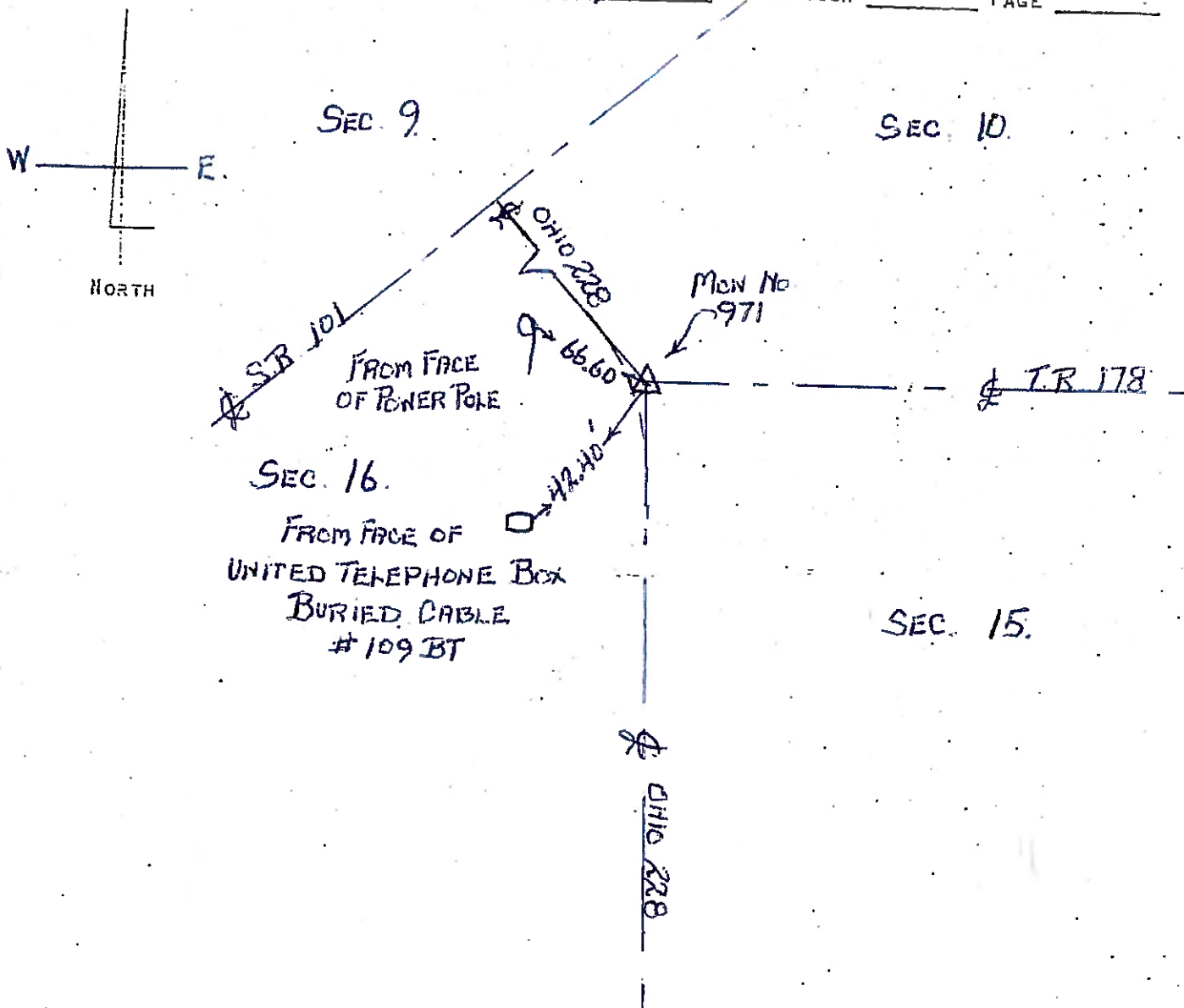
FOUND JAN 23, ²⁰⁰¹~~19~~ BY F.J.P. & B.L.

N. & S. ROAD STATE RT. 228

FIELD BOOK _____ PAGE _____

E. & W. ROAD T.R. 178 (LEE ROAD)

FIELD BOOK _____ PAGE _____



DRAWN F.J.P.

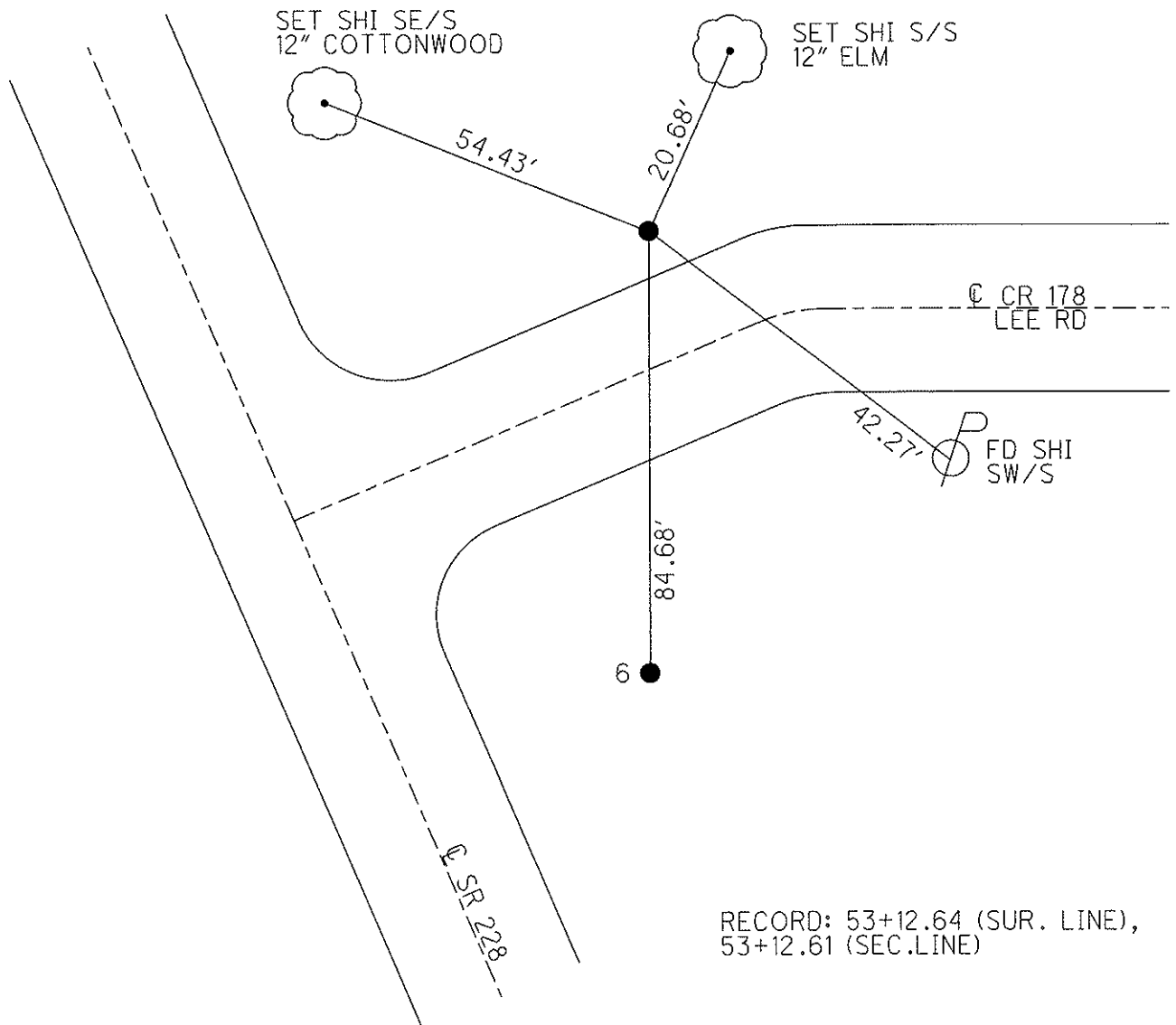
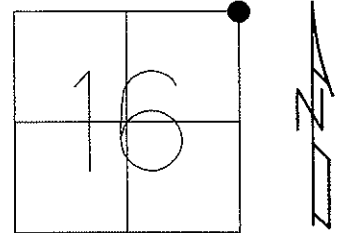
CHECKED [Signature]

1/23/2001

O.D.O.T. DISTRICT 2 SURVEY OFFICE (USE ONLY)

PERSONNEL _____ REFERENCE NO. 7 SHEET 9 OF 11
 NOTES MOSER DATE 9/4/96 ROUTE SR 228
 H.C. BARNHISEL WEATHER CLOUDY COUNTY SENECA
 R.C. MOSER TEMP. 70° TOWNSHIP ADAMS
 _____ SECTION 16
 _____ T 3 N R 16 E

TYPE MONUMENT 3/4" REBAR IN CONC.
 ON SURFACE - ~~BELOW~~ ON
~~LEFT~~ - Q PAV'T - RIGHT 12', CR 178
91.1' RT TO RT EDGE PAVEMENT
 S.L.M. 52+75
 Grid: Northing: _____ Easting: _____



RECORD: 53+12.64 (SUR. LINE),
 53+12.61 (SEC. LINE)

O.D.O.T. DISTRICT 2 SURVEY OFFICE

PERSONNEL _____

REFERENCE NO. 687

SHEET 7 OF 9

NOTES BARNHISEL RC

H.C. CORDES

DATE 9-4-96

ROUTE 228

R.C. _____

WEATHER cloudy

COUNTY SENECA

TEMP. +70°

TOWNSHIP Adams

SECTION 16

T 3 N R 16 E

Sec. CORNER

P.I. Survey

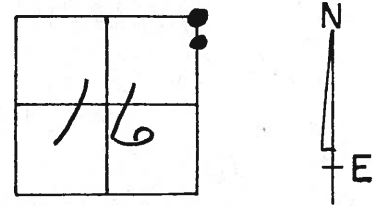
TYPE MONUMENT 3/4" REBAR IN CONC. 5/8" BOLT (LEANING)

ON SURFACE - BELOW SURFACE 12" Below

~~12' RT & Co. Rd~~ 12' RT & Co. Rd 64' RT & SR 228

~~RT OF RT EDGE PAVEMENT~~ 91.1' 53'

S.L.M. 52+75± Sec. CORNER



RECORD: 53+12.64 (Sur. LINE) 53+12.61 (Sec. LINE)
See VOL. 225, Pg 44 of THE Sen. Co. Deed Records
Recorded Sept 19, 1934 for POINTS UP TO SR 101 FROM HERE

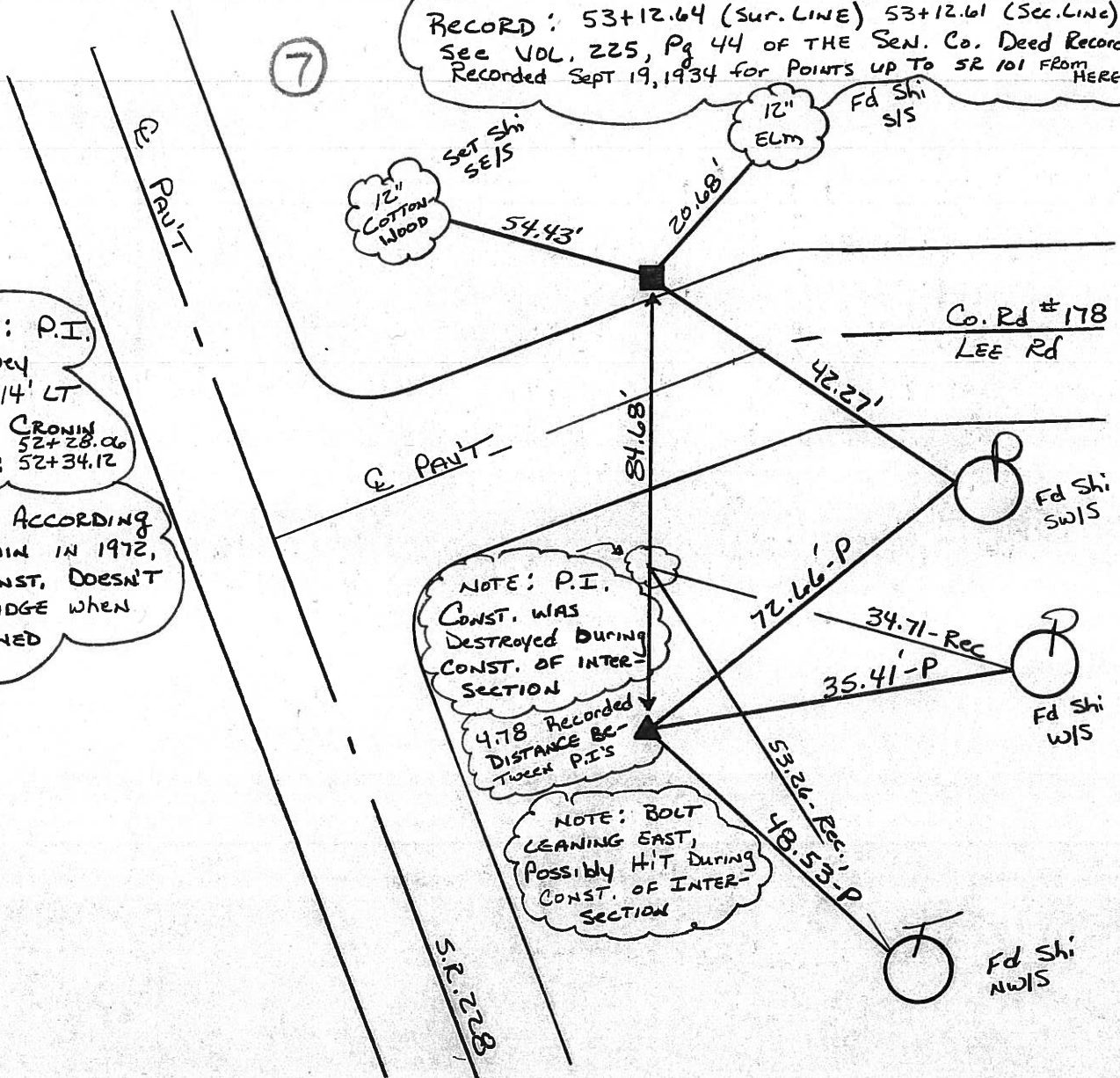
(7)

RECORD: P.I. Survey
A = 51°-14' LT
1972 by CRONIN
52+28.06
Plan Sta: 52+34.12

RECORD: ACCORDING TO CRONIN IN 1972, P.I. CONST. DOESN'T FIT BRIDGE WHEN X TURNED

NOTE: P.I. CONST. WAS DESTROYED DURING CONST. OF INTER-SECTION
4.78 Recorded DISTANCE BETWEEN P.I.'S

NOTE: BOLT LEANING EAST, POSSIBLY HIT DURING CONST. OF INTER-SECTION



PERSONNEL TITLE PERSONNEL TITLE

COUNTY *Seneca*

DATE *03/28/86*

Cronin

Ripple

Geyman

Barbour

S. R. # *228*

WEATHER *sunny-windy*

SEC. *Bridge - SLM. 0.50*

TEMP. *58°*

DESCRIPTION

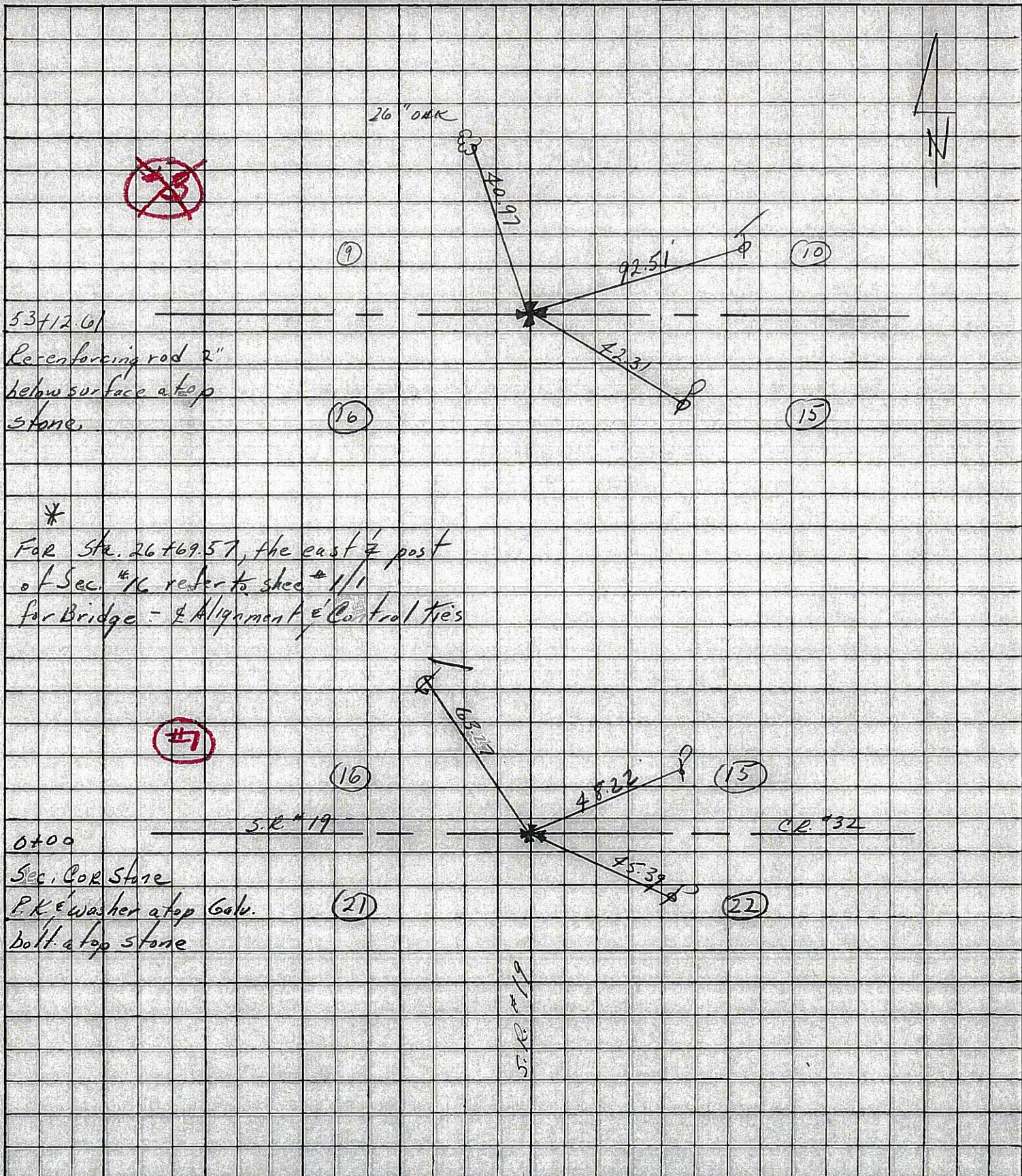
Control Point Ties

JOB NO.

LEFT

CENTER LINE

RIGHT



7

53+12.61
Re-enforcing rod 2"
below surface at top
stone.

3

*
For Sta. 26+69.57, the east 1/2 post
of Sec. #16 refer to sheet #1/1
for Bridge - Alignment & Control Ties



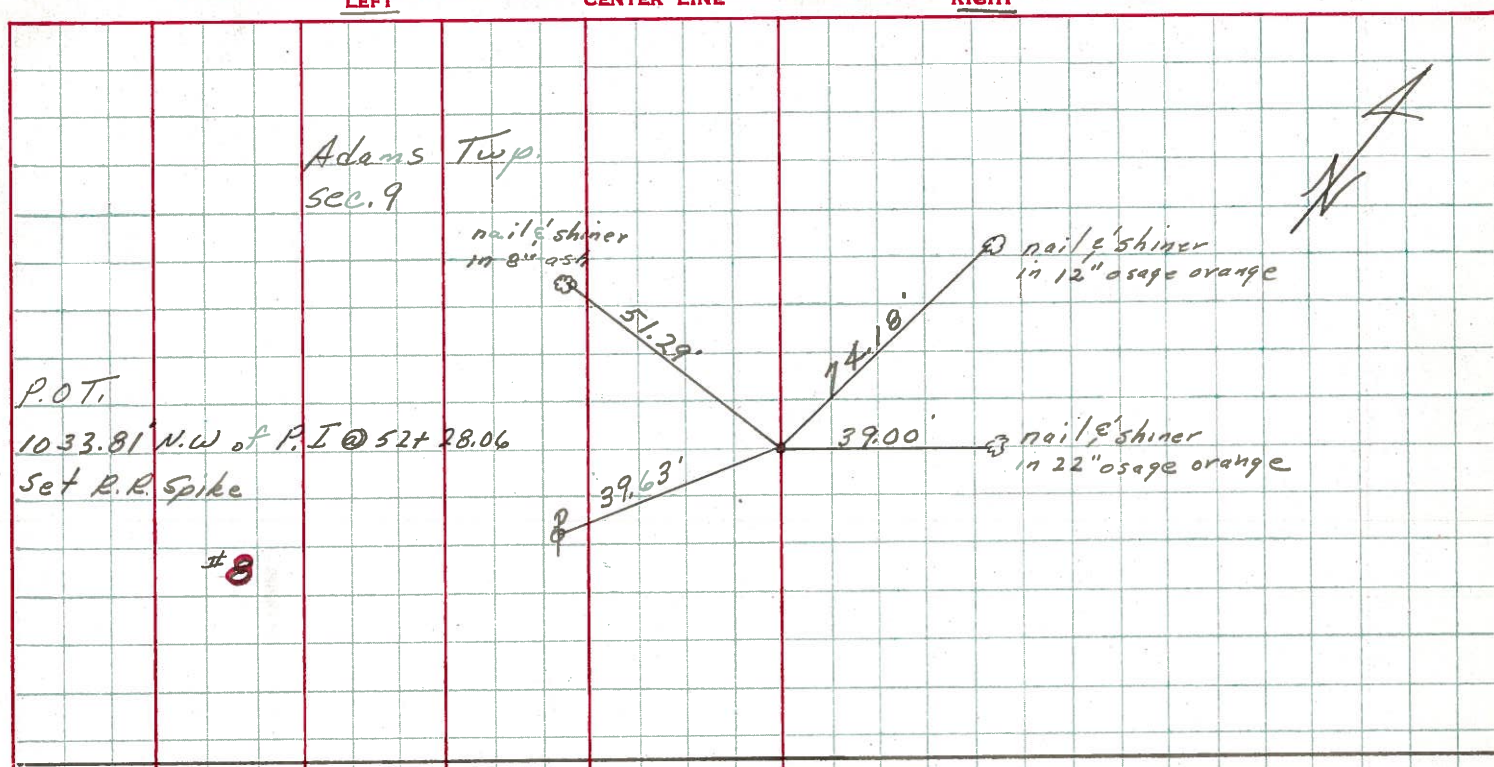
0+00
Sec. COR Stone
P.K. & washer at top
bolt at top stone

S.R. #19

PERSONNEL	TITLE	PERSONNEL	TITLE	COUNTY	DATE
Ash				Seneca	11/3/72
Cronin				S. R. # 228	WEATHER cloudy
Ripple				SEC. 'K' I.C.H. 485	TEMP. 50°
Anderson					

DESCRIPTION Ties For Control Points JOB NO. _____

8



7

