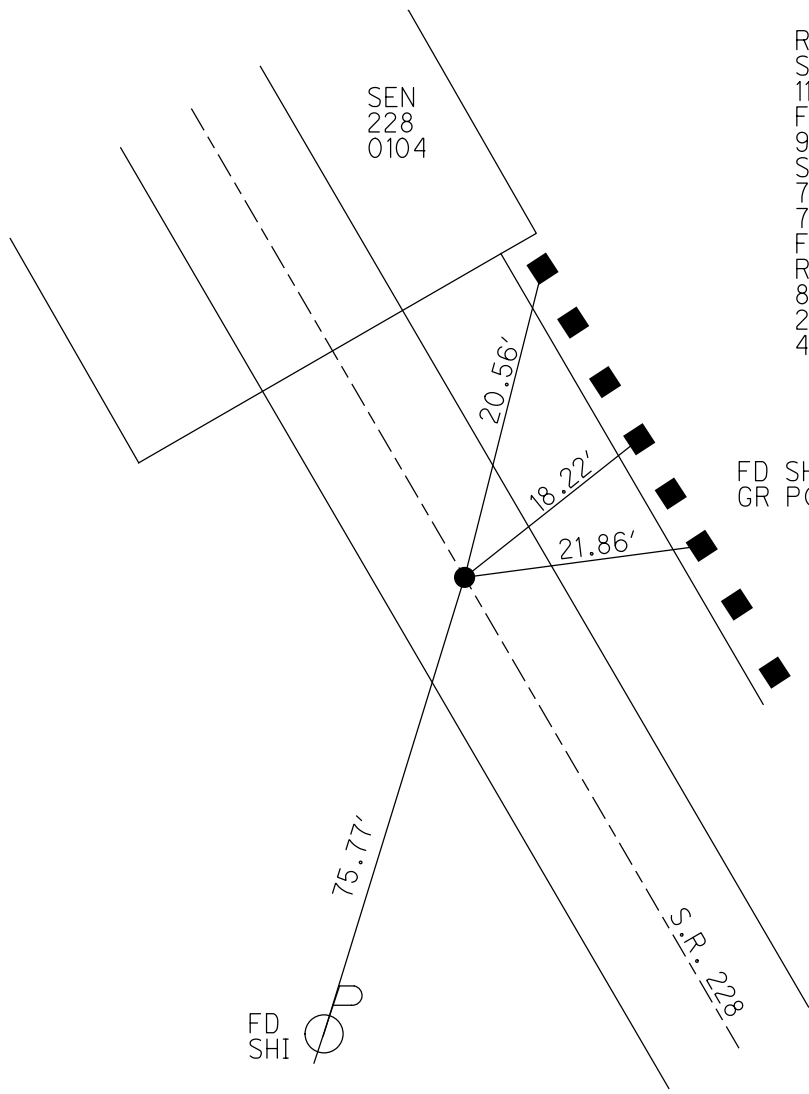
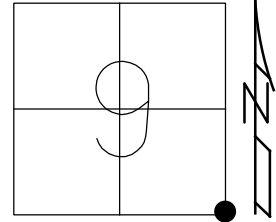


O.D.O.T. DISTRICT 2 SURVEY OFFICE (USE ONLY)

PERSONNEL \_\_\_\_\_ REFERENCE NO. 7 A SHEET 10 OF 11  
 NOTES RHOADES DATE 8/23/21 ROUTE SR 228  
 H.C. NIESE WEATHER FAIR COUNTY SENECA  
 R.C. RHOADES TEMP. 81° TOWNSHIP ADAMS  
 DWG BY RHOADES PID PVTRAIN SECTION 9  
 T 3 N R 16 E

TYPE MONUMENT P.K./WASHER  
 ON SURFACE - ~~BELOW~~ ON  
 OFFSET CL PAVEMENT 0.3' ~~RT~~ : RT  
9.7' TO RT EDGE PAVEMENT  
 STATION: 54+72

HORZ.DATUM: NAD83 2011 GEOID: NAVD88 2018  
 GRID: NORTHING: 569240.472 EASTING: 1826572.467



RECORD;  
 SET P.K./WASHER  
 11/20/98, MRC  
 FD P.K./WASHER  
 9/5/03  
 SV129  
 7/29/09, KPM  
 7/15/10  
 FD P.K./WASHER  
 REFA7  
 8/23/21, TDN  
 2/16/22, JFO  
 4/14/23, JMR

FD SHI'S  
 GR POSTS

O.D.O.T. DISTRICT 2 SURVEY OFFICE (USE ONLY)

PERSONNEL

REFERENCE NO. 7 A

SHEET 10 OF 11

NOTES RHOADES

DATE 8/23/21

ROUTE SR 228

H.C. NIESE

WEATHER FAIR

COUNTY SENECA

R.C. RHOADES

TEMP. 81°

TOWNSHIP ADAMS

SECTION 9

DWG BY RHOADES PID PVTRAIN

T 3 N R 16 E

TYPE MONUMENT P.K./WASHER

ON SURFACE - ~~BELOW~~ ON

OFFSET 0.3' ET : RT

9.7' TO RT EDGE PAVEMENT

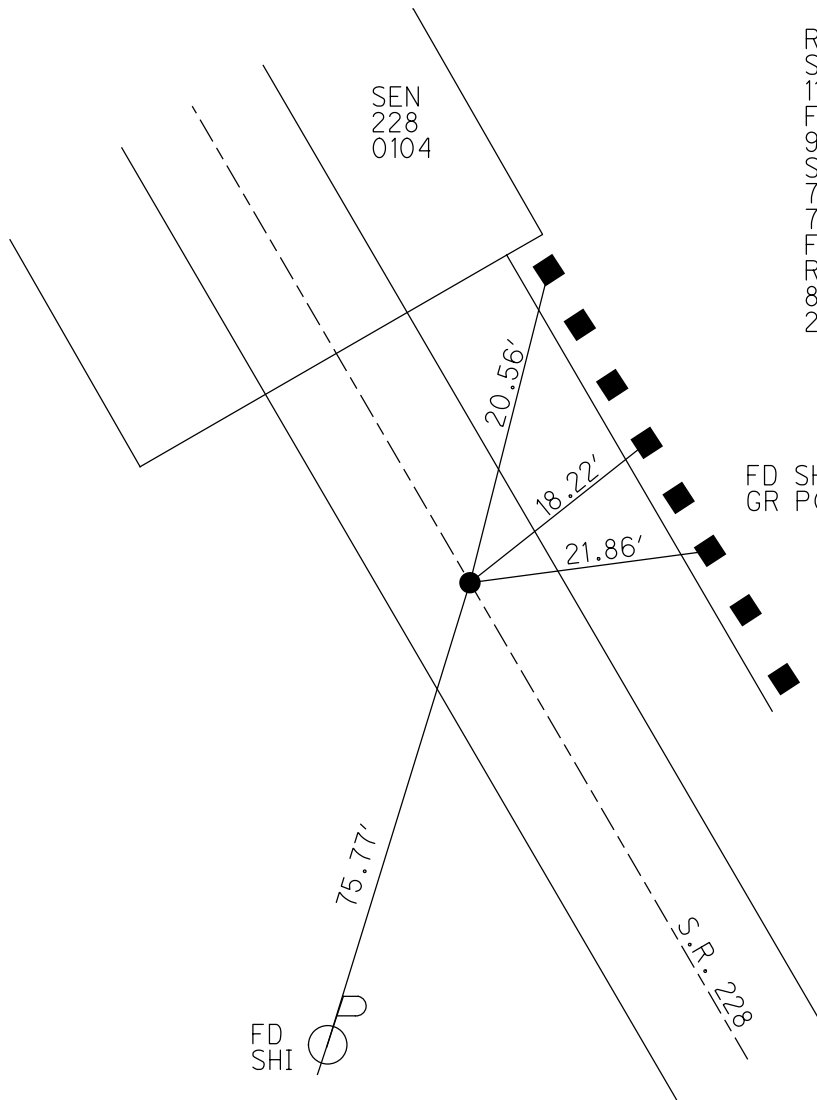
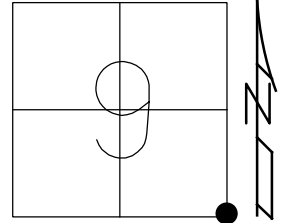
STATION: 54+72

HORIZ.DATUM: NAD83 2011

GEOID: NAVD88 2018

GRID: NORTHING: 565717.926

EASTING: 1826760.575



RECORD;  
SET P.K./WASHER  
11/20/98, MRC  
FD P.K./WASHER  
9/5/03  
SV129  
7/29/09, KPM  
7/15/10  
FD P.K./WASHER  
REFA7  
8/23/21, TDN  
2/16/22, JFO

O.D.O.T. DISTRICT 2 SURVEY OFFICE (USE ONLY)

PERSONNEL

REFERENCE NO. 7-A

SHEET 10 OF 11

NOTES MOSER

DATE 7-15-09

ROUTE 228

H.C. BARNHISEL

WEATHER OVERCAST

COUNTY SENECA

R.C. MOSER

TEMP. +75°

TOWNSHIP ADAMS

SECTION 9

T 3 N R 16 E

TYPE MONUMENT PK/WASHER

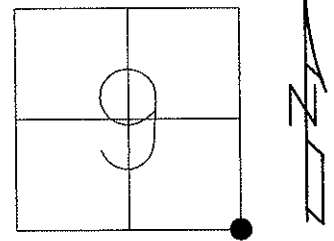
ON SURFACE - ~~BELOW~~ ON

~~LEFT - C PAV'T~~ - RIGHT 0.3'

9.7' TO RT. EDGE PAVEMENT

S.L.M. 54+72

Grid: Northing: \_\_\_\_\_ Easting: \_\_\_\_\_

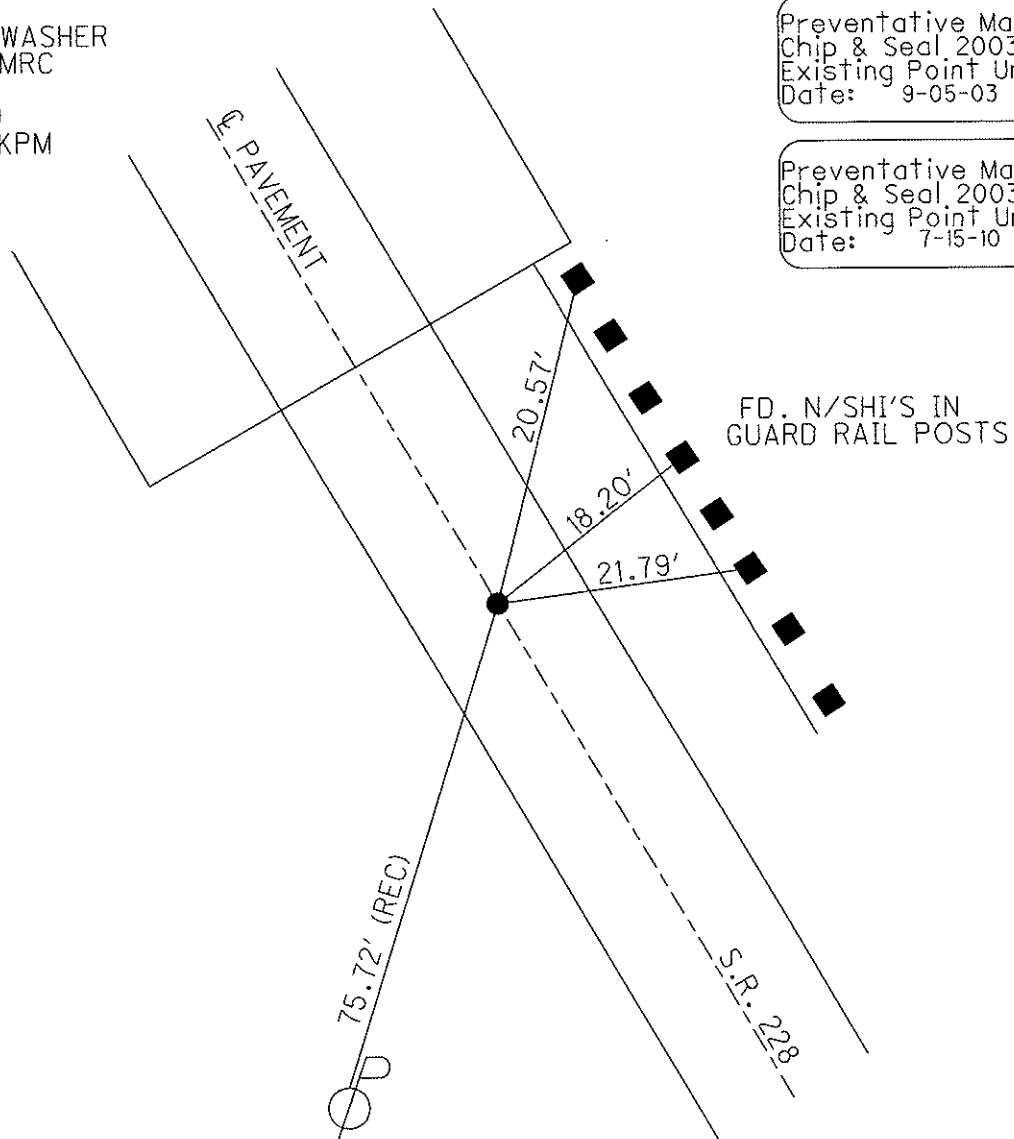


RESET PK/WASHER  
11/20/98, MRC

GPS, SV129  
7/29/09, KPM

Preventative Maintenance  
Chip & Seal, 2003  
Existing Point Uncovered  
Date: 9-05-03

Preventative Maintenance  
Chip & Seal, 2003  
Existing Point Uncovered  
Date: 7-15-10



# O.D.O.T. DISTRICT 2 SURVEY OFFICE

PERSONNEL

REFERENCE NO. 7-A

SHEET 8 OF 9

NOTES CANTERBURY

H.C. Rousos

R.C. BARNHISEL

DATE 9-21-98

WEATHER OVERCAST

TEMP. +75°

ROUTE 228

COUNTY SENECA

TOWNSHIP ADAMS

SECTION 9

T 3 N R 16 E

TYPE MONUMENT P.K. / WASHER

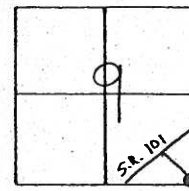
ON SURFACE - ~~BELOW~~ SURFACE

~~LEFT - & PAVT. - RIGHT~~ 0.3' RT & PAVT.

9.7' TO RT. EDGE PAVEMENT

S.L.M. 54+72

RESET P.K./WASHER  
11/20/98  
M.R.C.



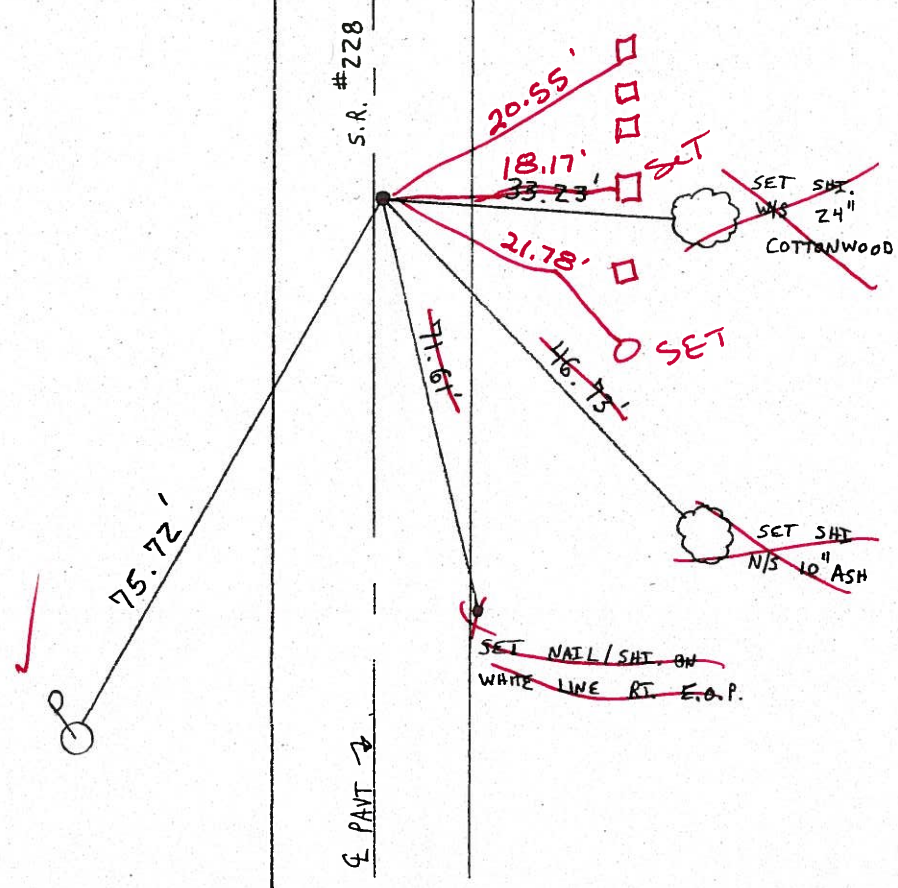
RECORD: P.T. SET BY O.D.O.T  
 STA 54+71.78

BRIDGE #  
 SEN-228-0124

6-18-03

MB  
 MC  
 CB

9-5-03  
~~COVERED~~





# O.D.O.T. DISTRICT 2 SURVEY OFFICE

PERSONNEL

REFERENCE NO. 7-A

SHEET 8 OF 9

NOTES CANTERBURY

H.C. Rousos

R.C. BARNHISEL

DATE 9-21-98

WEATHER OVERCAST

TEMP. +75°

ROUTE 228

COUNTY SENECA

TOWNSHIP ADAMS

SECTION 9

T 3 N R 16 E

TYPE MONUMENT P.K. / WASHER

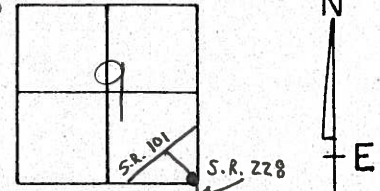
ON SURFACE - BELOW SURFACE

~~LEFT - & PAVT.~~ - RIGHT 0.3' RT & PAVT.

9.7' TO RT. EDGE PAVEMENT

S.L.M. 54+72

RESET P.K./WASHER  
 11/20/98  
 M.R.C.



RECORD: P.T. SET BY O.D.O.T  
 STA 54+71.78

BRIDGE #  
 SEN-228-0124

Preventive Maintenance  
 Chip & Seal 2003  
 Existing Point Uncovered  
 Date 09/05/03

