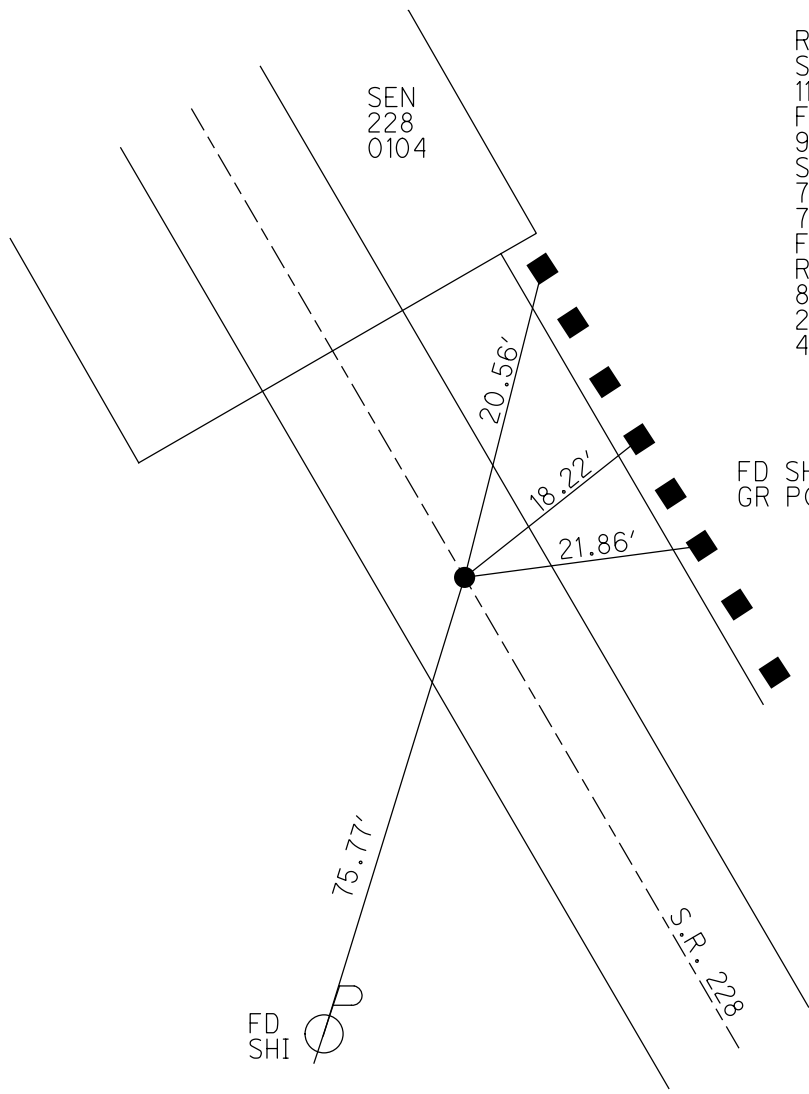
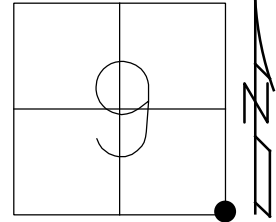


O.D.O.T. DISTRICT 2 SURVEY OFFICE (USE ONLY)

PERSONNEL \_\_\_\_\_ REFERENCE NO. 7 A SHEET 10 OF 11  
 NOTES RHOADES DATE 8/23/21 ROUTE SR 228  
 H.C. NIESE WEATHER FAIR COUNTY SENECA  
 R.C. RHOADES TEMP. 81° TOWNSHIP ADAMS  
 DWG BY RHOADES PID PVTRAIN SECTION 9  
 T 3 N R 16 E

TYPE MONUMENT P.K./WASHER  
 ON SURFACE - ~~BELOW~~ ON  
 OFFSET 0.3' ~~±~~ : RT  
9.7' TO RT EDGE PAVEMENT  
 STATION: 54+72

HORZ.DATUM: NAD83 2011 GEOID: NAVD88 2018  
 GRID: NORTHING: 569240.472 EASTING: 1826572.467



RECORD;  
 SET P.K./WASHER  
 11/20/98, MRC  
 FD P.K./WASHER  
 9/5/03  
 SV129  
 7/29/09, KPM  
 7/15/10  
 FD P.K./WASHER  
 REFA7  
 8/23/21, TDN  
 2/16/22, JFO  
 4/14/23, JMR

FD SHI'S  
 GR POSTS

O.D.O.T. DISTRICT 2 SURVEY OFFICE (USE ONLY)

PERSONNEL \_\_\_\_\_ REFERENCE NO. 8 SHEET 11 OF 11  
 NOTES RHOADES DATE 8/23/21 ROUTE SR 228  
 H.C. NIESE WEATHER FAIR COUNTY SENECA  
 R.C. RHOADES TEMP. 81° TOWNSHIP ADAMS  
 DWG BY \_\_\_\_\_ PID PVTRAIN SECTION 9  
 T 3 N R 16 E

TYPE MONUMENT LG.R.R.SPIKE

~~ON SURFACE~~ - BELOW 1.5"

OFFSET ☉ PAVEMENT 5.5' ~~±~~ : RT

4.4' TO RT EDGE PAVEMENT

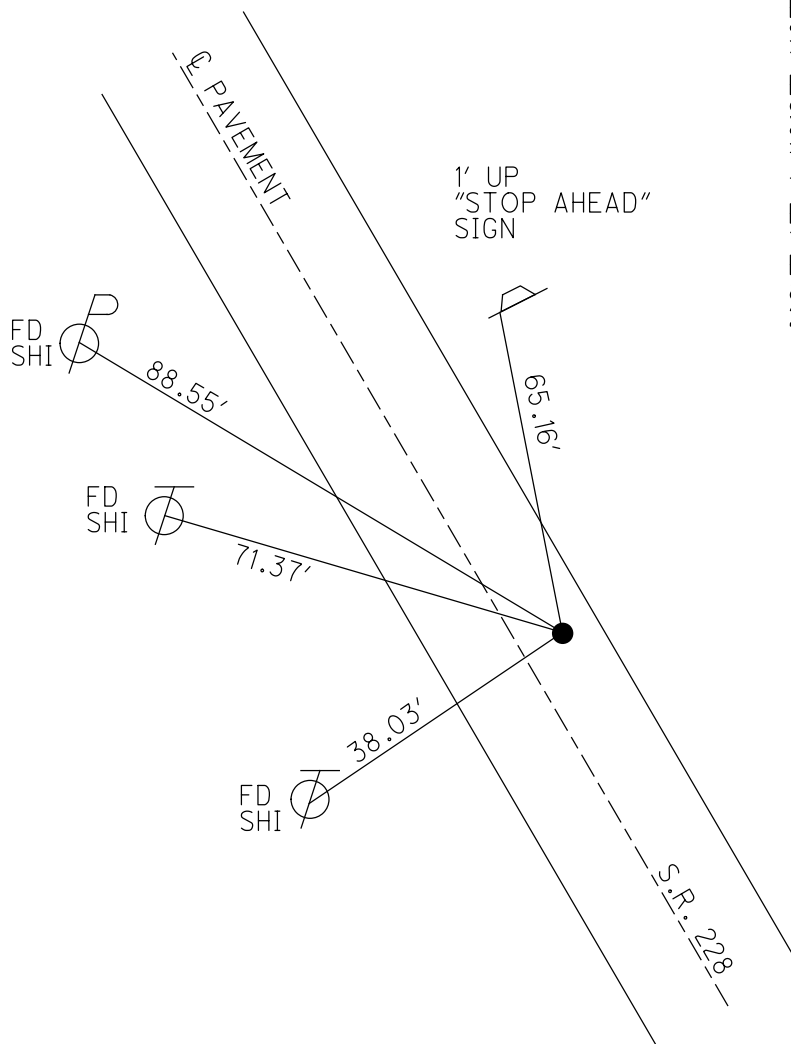
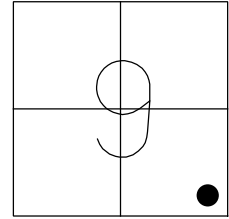
STATION: 62+33

HORZ.DATUM: NAD83 2011

GEOID: NAVD88 2018

GRID: NORTHING: 569717.926

EASTING: 1825982.575

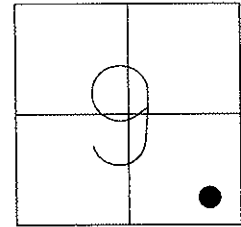


RECORD:  
 SET P.K./WASHER  
 10/2/96, MB  
 FD P.K./WASHER  
 9/5/03  
 SV116  
 7/16/09, KPM  
 7/15/10  
 FD LG.R.R.SPIKE  
 1 1/2" DOWN  
 REF8  
 8/23/21, TDN  
 2/16/22, JFO

O.D.O.T. DISTRICT 2 SURVEY OFFICE (USE ONLY)

PERSONNEL \_\_\_\_\_ REFERENCE NO. 8 SHEET 11 OF 11  
 NOTES BARNHISEL DATE 7-15-09 ROUTE 228  
 H.C. BARNHISEL WEATHER SUNNY COUNTY SENECA  
 R.C. MOSER TEMP. +75° TOWNSHIP ADAMS  
 \_\_\_\_\_ SECTION 9  
 \_\_\_\_\_ T 3 N R 16 E

TYPE MONUMENT \_\_\_\_\_ LG. RR SPIKE \_\_\_\_\_  
~~ON SURFACE~~ - BELOW 1.5"  
~~LEFT - C PAV'T~~ - RIGHT 5.5'  
4.4' TO RT. EDGE PAVEMENT  
 S.L.M. 62+33  
 Grid: Northing: \_\_\_\_\_ Easting: \_\_\_\_\_

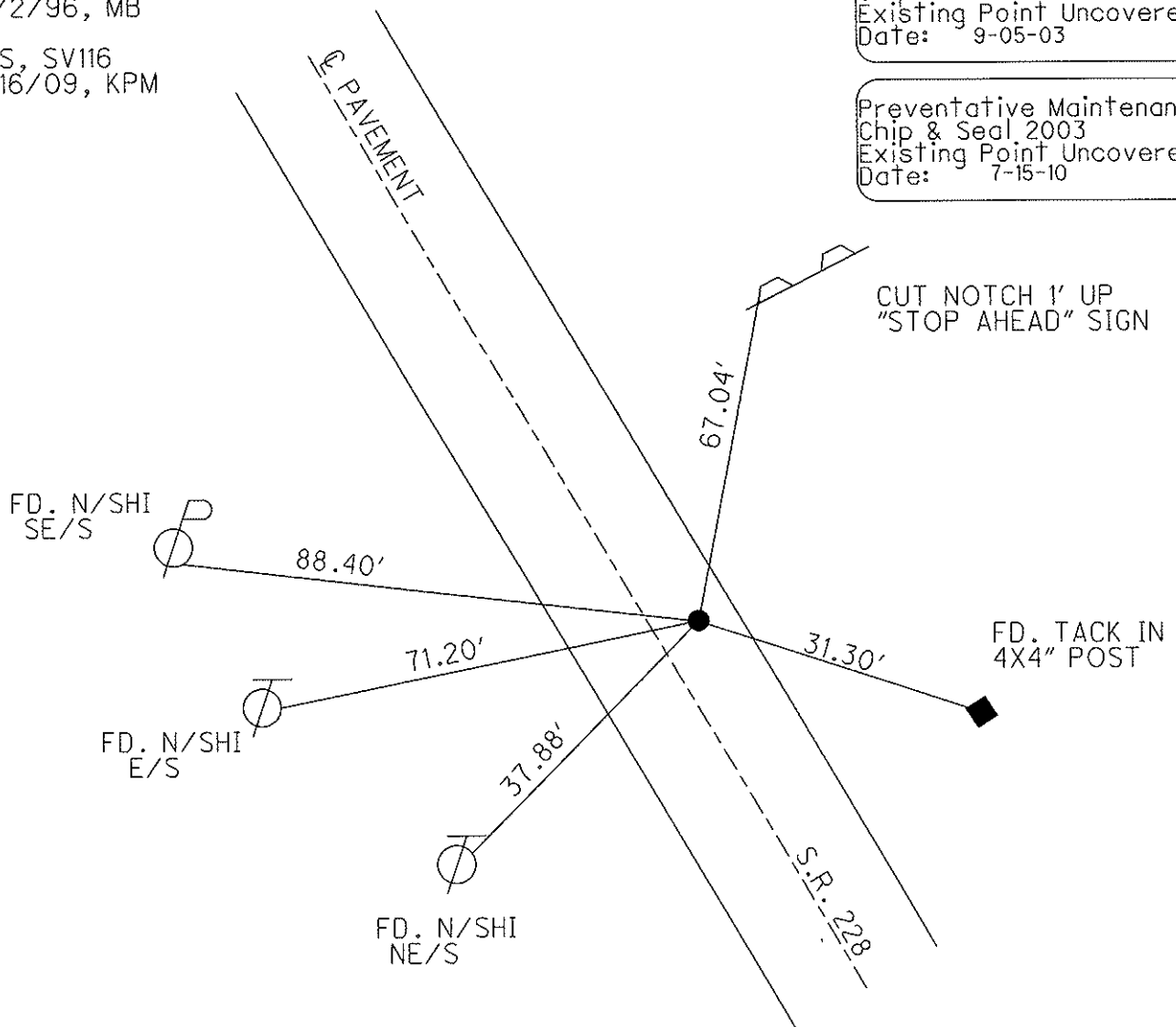


RESET PK/WASHER  
 10/2/96, MB

GPS, SV116  
 7/16/09, KPM

Preventative Maintenance  
 Chip & Seal 2003  
 Existing Point Uncovered  
 Date: 9-05-03

Preventative Maintenance  
 Chip & Seal 2003  
 Existing Point Uncovered  
 Date: 7-15-10



CUT NOTCH 1' UP  
 "STOP AHEAD" SIGN

# O.D.O.T. DISTRICT 2 SURVEY OFFICE

PERSONNEL                      ✓

REFERENCE NO. 8

SHEET 9 OF 9

NOTES BARNHISEL RC

6-18-03

H.C. CORDES CLIFF

DATE 9-4-96

ROUTE 228

R.C.                     

WEATHER Cloudy

COUNTY SENECA

TEMP. +70°

TOWNSHIP Adams

SECTION 9

T 3 N R 16 E

TYPE MONUMENT Lg RR Spk ✓

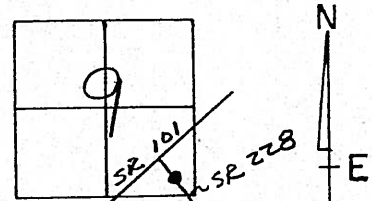
~~SP~~ ~~SP~~ - BELOW 1/2" ✓

~~SP~~ - @ PAV'T. - RIGHT 5.5 ✓

4.4 TO RT EDGE PAVEMENT

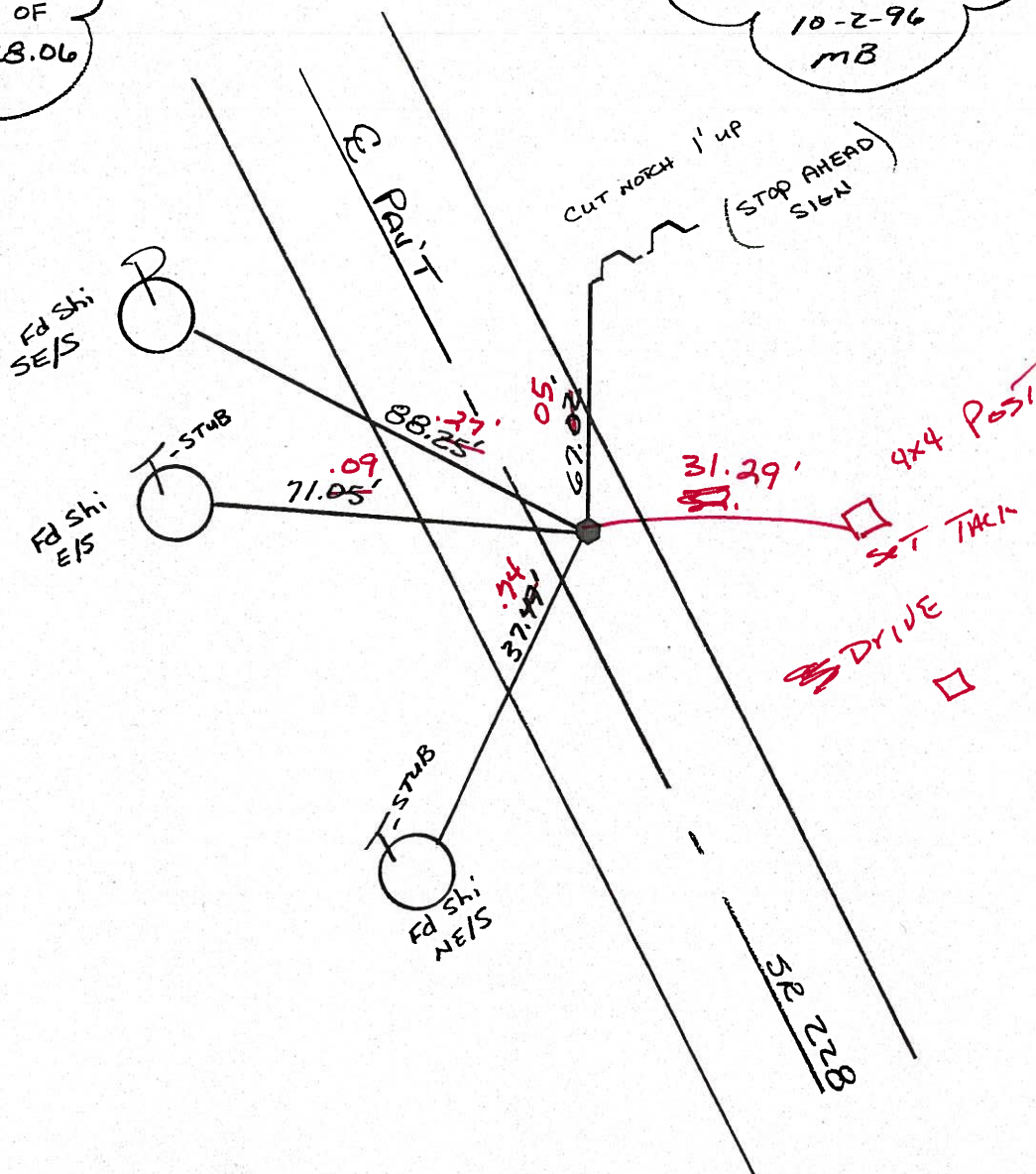
S.L.M. 62+33

*9-5-03  
UNCOVERED*



RECORD: P.O.T.  
1033.81' NW OF  
P.I. @ 52+28.06  
SET RR SPIKE

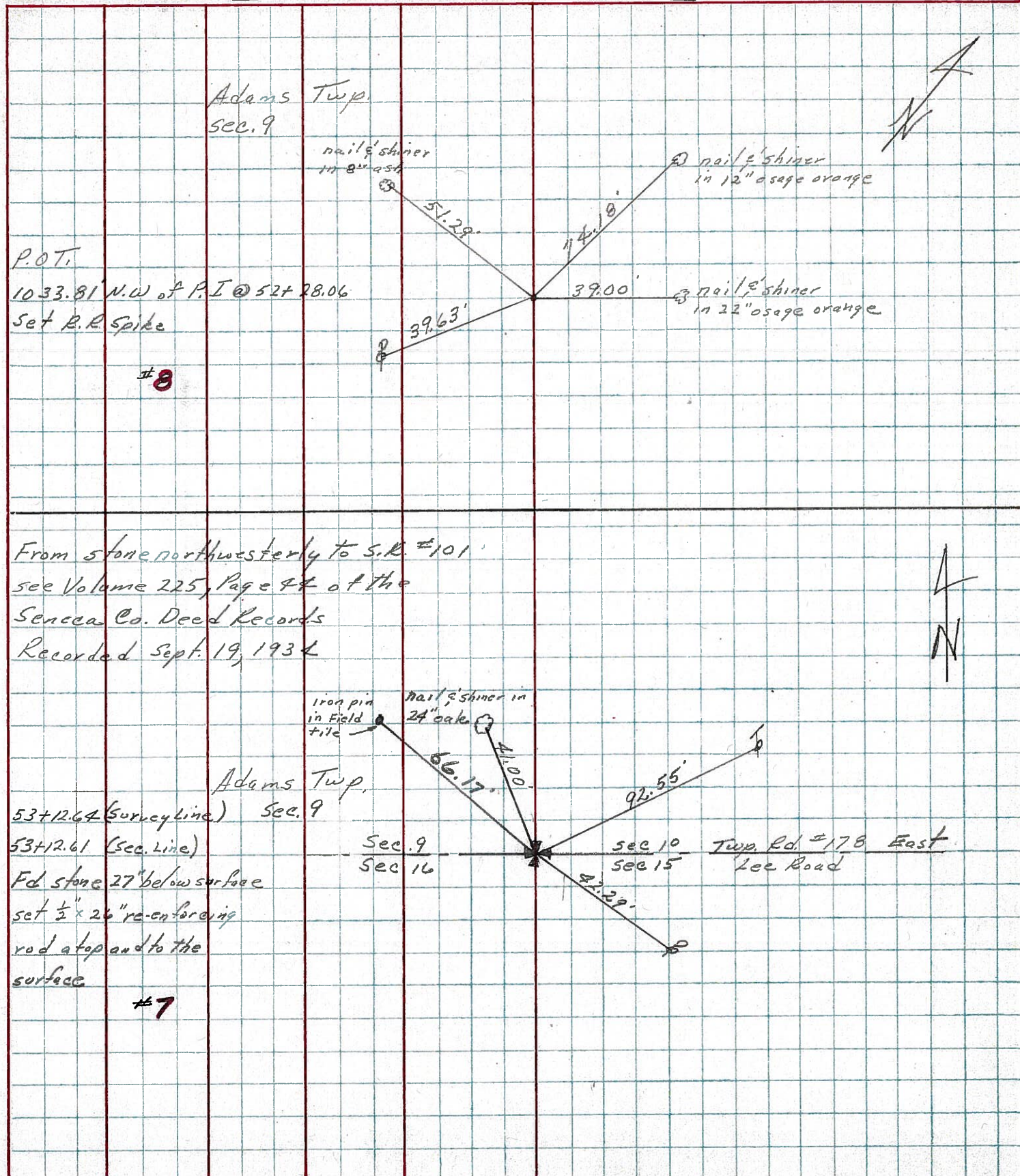
RESET PK & WASHER  
10-2-96  
MB





PERSONNEL	TITLE	PERSONNEL	TITLE	COUNTY	DATE
Ash				Seneca	11/3/72
Cronin				S. R. # 228	WEATHER cloudy
Ripple				SEC. 'K' I.C.H. 485	TEMP. 50°
Anderson					

DESCRIPTION *Ties for Control Points* JOB NO. \_\_\_\_\_



8

7