

SEC 31 T1N R15E EDEN TWP.

SENECA COUNTY
S. H. 966 SEC. B (Pt)
R/W PLANS

1
3

DATE MARCH 21, 1940 DRAWN BY B.H.
REVISIONS

LENGTH OF PROJECT

R/W checked
OK as shown
F.J.F.
3/24/47

PAULINE BROMWELL
R.#1. TIFFIN, OHIO
1

MARY J. PALMER
3

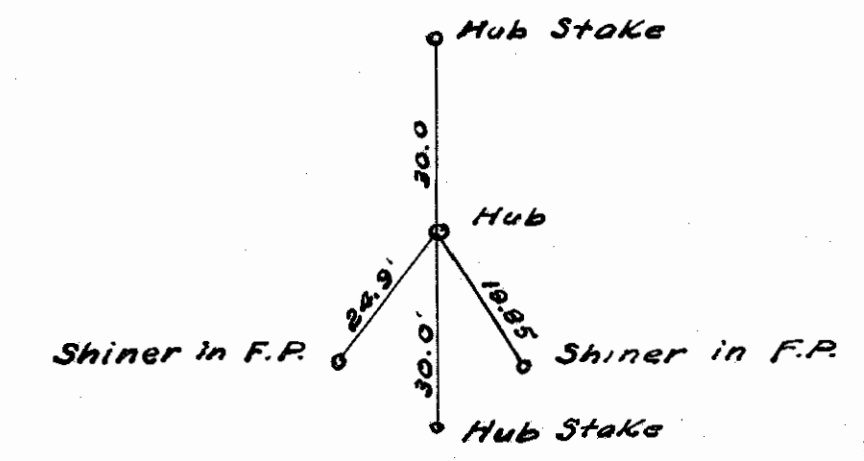
P.I. Sta. 11+00
Δ = 0°-00'

12+00

PAULINE BROMWELL
P.I. Sta. E6 + 33.71
Δ = 0°-16' RT
MARY J. PALMER

HWY. No. 1
HWY. No. 2
TOWNSHIP
P.R. GRUBB
T13R15E Wyoandot
County
T13R15E Seneca
County
PAULINE BROMWELL
TOWNSHIP
SYCAMORE
STANLEY STAYER
SEC. 5
LINE 32
P.R. GRUBB
EDEN

P. R. GRUBB
SYCAMORE, O
2



SEC 32 T1N R15E EDEN TWP.

SEC. 31 T1N R15E EDEN TWP.

SEC 30 T1N R15E EDEN TWP.

MARY J. PALMER
3

JENNIE PALMER
5

CHARLES F. BOROFF
1

MARY J. PALMER
JENNIE PALMER

JENNIE PALMER
P.I. Sta. 52+58
Δ = 0°-07' LY
CHARLES F. BOROFF

P. R. GRUBB
2

CHARLES L. WAGNER ET AL
4

CHARLES L. WAGNER
6

P.R. GRUBB
CHARLES L. WAGNER ET AL

CHARLES L. WAGNER ET AL
CHARLES L. WAGNER
SEC. 32
LINE 29

SEC 32 T1N R15E EDEN TWP.

SEC 29 T1N R15E EDEN TWP.

CHARLES F. BOROFF
1

VIRGIL A. FOUGHT
2

P.I. Sta. 73+97.15
Δ = 0°-00'

CHARLES F. BOROFF
P.I. Sta. 79+26
Δ = 0°-10' Lt.

CHARLES L. WAGNER
VIRGIL A. FOUGHT

CHARLES L. WAGNER
6

VIRGIL A. FOUGHT
8

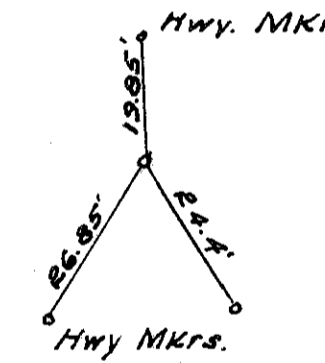
VIRGIL A. FOUGHT
9

MERVIN BARE
10

WILLIAM McDONALD
14

MERVIN BARE
WILLIAM McDONALD
P.I. Sta. 100+00
Δ = 0°-00'

P.I. Sta. 105+70.7
Δ = 0°-05' Lt.



VIRGIL A. FOUGHT
8

A. E. N. CROMLEY
11

MARY E. LONGWAY & ALVIN B. GRILLOT
13

A. E. N. CROMLEY
MARY E. LONGWAY
& ALVIN B. GRILLOT

SEC. 19 T1N R15E EDEN TWP.

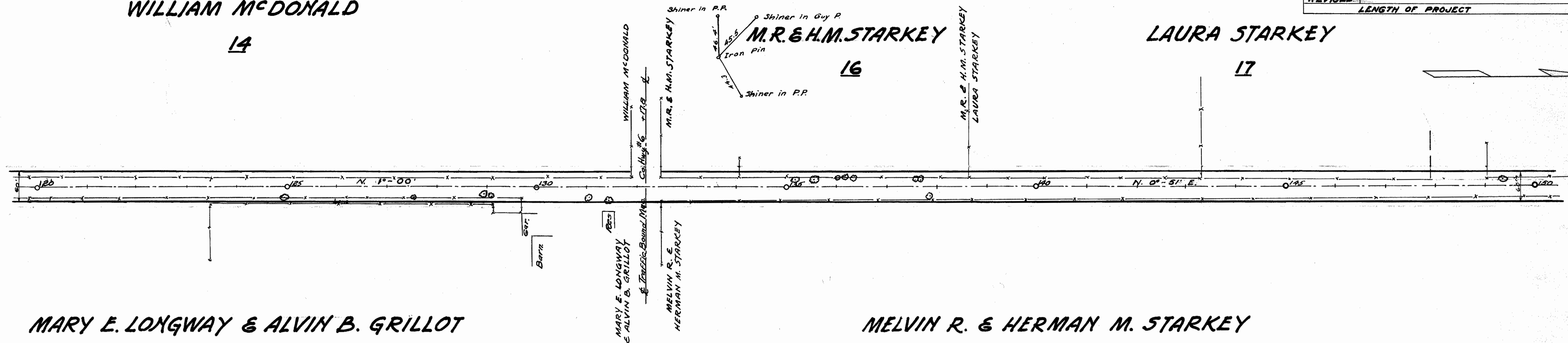
SENECA COUNTY		3 3
S. H. 966	SEC. B (Pt.)	
R/W PLANS		
DATE	MARCH 21, 1940	DRAWN BY BH
REVISED	LENGTH OF PROJECT	

WILLIAM McDONALD
14

P.I. Sta. 132+17.8
Δ = 0°-09' Lt.

M.R. & H.M. STARKEY
16

LAURA STARKEY
17



MARY E. LONGWAY & ALVIN B. GRILLOT
13

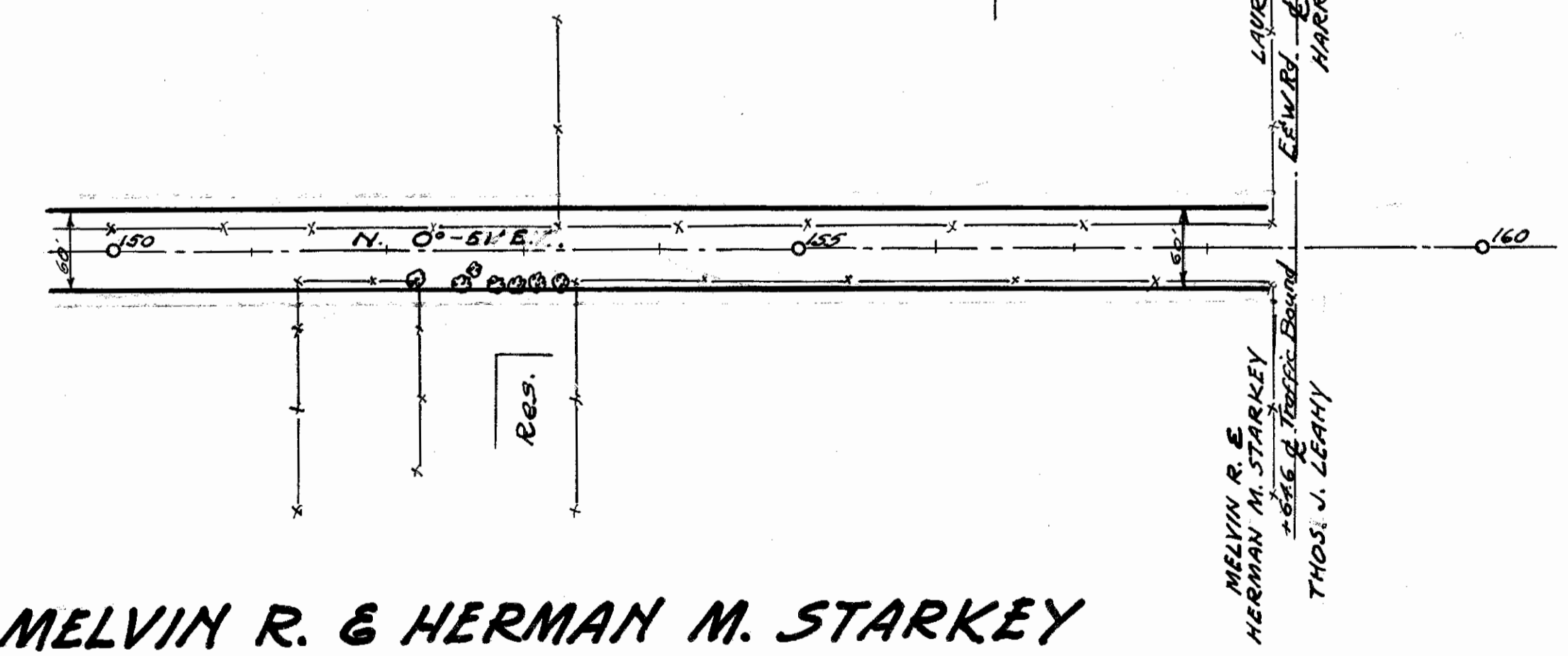
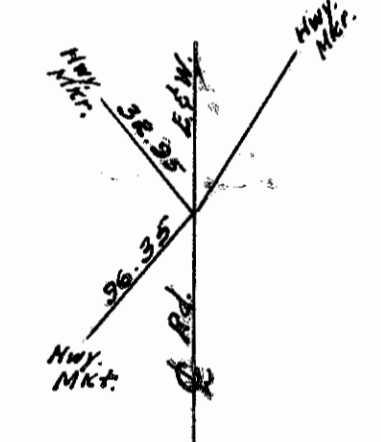
MELVIN R. & HERMAN M. STARKEY
15

SEC. 20 T1N R15E EDEN TWP.

SEC. 19 T1N R15E EDEN TWP.

P.I. Sta. 158+64.6
Δ = 0°-02' Lt.

LAURA STARKEY
17



MELVIN R. & HERMAN M. STARKEY
15

SEC. 20 T1N R15E EDEN TWP.